

## Airport information:

Country: United States of America

City: FORT LAUDERDALE

Coordinates: N 26° 04.4', W 080° 09.2'

Elevation: 9

Customs: Customs

Fuel: 100LL, Jet A

RFF: Index E

hours: H24

## Runways:

Runway 09L

Takeoff length: 2743, Landing length: 2567

Runway 09R

Takeoff length: 1608, Landing length: 1510

Runway 13

Takeoff length: 2112, Landing length: 2112

Runway 27L

Takeoff length: 1608, Landing length: 1564

Runway 27R

Takeoff length: 2743, Landing length: 2559

Runway 31

Takeoff length: 2112, Landing length: 2090

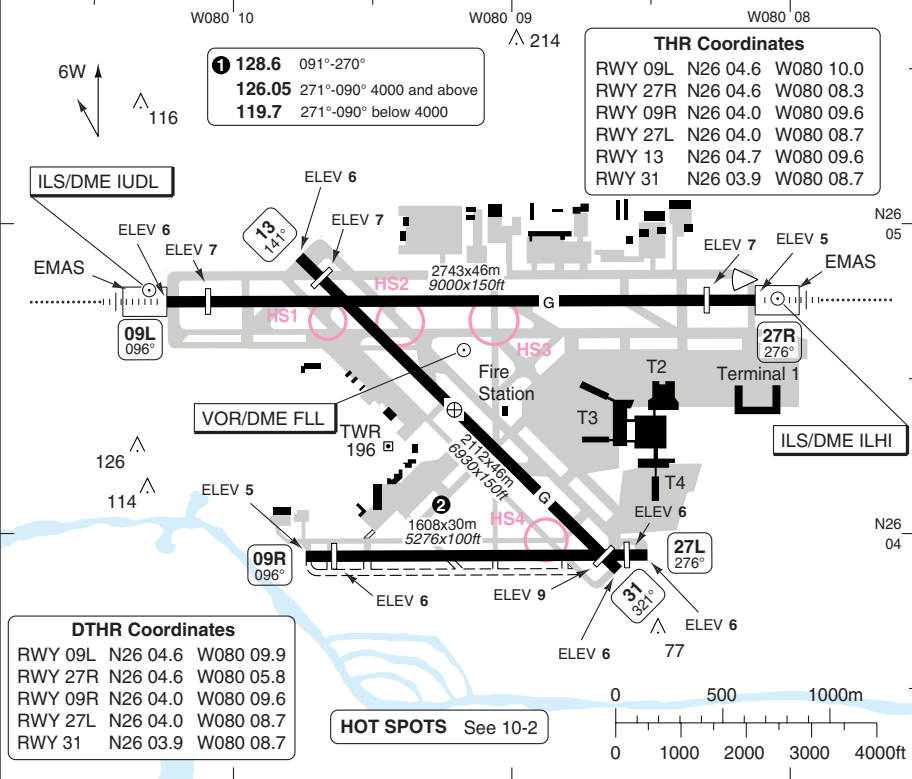
# AERODROME

# Hollywood INTL FORT LAUDERDALE

10 - 1

Fort Lauderdale CLR <b>128.4</b>	RAMP <b>118.175</b>	PRE TAXI <b>128.4</b>	GND <b>121.4</b> <b>121.7</b>	TWR <b>119.3</b> <b>120.2</b>	Miami DEP ① <b>128.6</b> <b>126.05</b> <b>119.7</b>	Fort Lauderdale ATIS (D) <b>135.0</b>
-------------------------------------	------------------------	--------------------------	-------------------------------------	-------------------------------------	---	--

AD Elev 9	ARP: N26 04.4 W080 09.2	RRF: Index E	AD HR: H24
-----------	-------------------------	--------------	------------



RWY	Slope	TORA m/ft	LDA m/ft	ALS	REDL	Additional
09L	0	2743 / 9000	2567 / 8423	M-I	H	P 3°R (68)
27R	0	2743 / 9000	2559 / 8394	M-I	H	P 3° (71)
09R	0	1608 / 5276	1511 / 4956	-	M	P 3° (45), REIL
27L	0	1608 / 5276	1565 / 5134	-	M	P 3.5° (40)
13	0	2112 / 6930	2112 / 6930	-	M	P 3° (75), REIL
31	0	2112 / 6930	2091 / 6860	-	M	P 3° (75), REIL

② Grip Flex surface on centre 15m / 50ft

TERPS		TAKE OFF MINIMA	
RWY	Facilities	RVR/VIS	
		2 ENG	3-4 ENG
All	HREDL or RCLL or RCL	1600ft / 1/4sm	
	Adequate vis ref	1/4sm	
	Standard	5000ft / 1sm	2400ft / 1/2sm

© Navtech - kfl101laorg0

Change: TWYs.

**THIS CHART IS A PART OF NAVIGRAPH NDAC AND IS INTENDED FOR FLIGHT SIMULATION USE ONLY**

Fort Lauderdale CLR <b>128.4</b>	RAMP <b>118.175</b>	PRE TAXI <b>128.4</b>	GND <b>121.4</b> <b>121.7</b>	TWR <b>119.3</b> <b>120.2</b>	Miami DEP <b>128.6</b> 091°-270° <b>119.7</b> 271°-090° below 4000ft	Fort Lauderdale ATIS (D) <b>135.0</b>
-------------------------------------	------------------------	--------------------------	-------------------------------------	-------------------------------------	--	--

**HOT SPOTS**

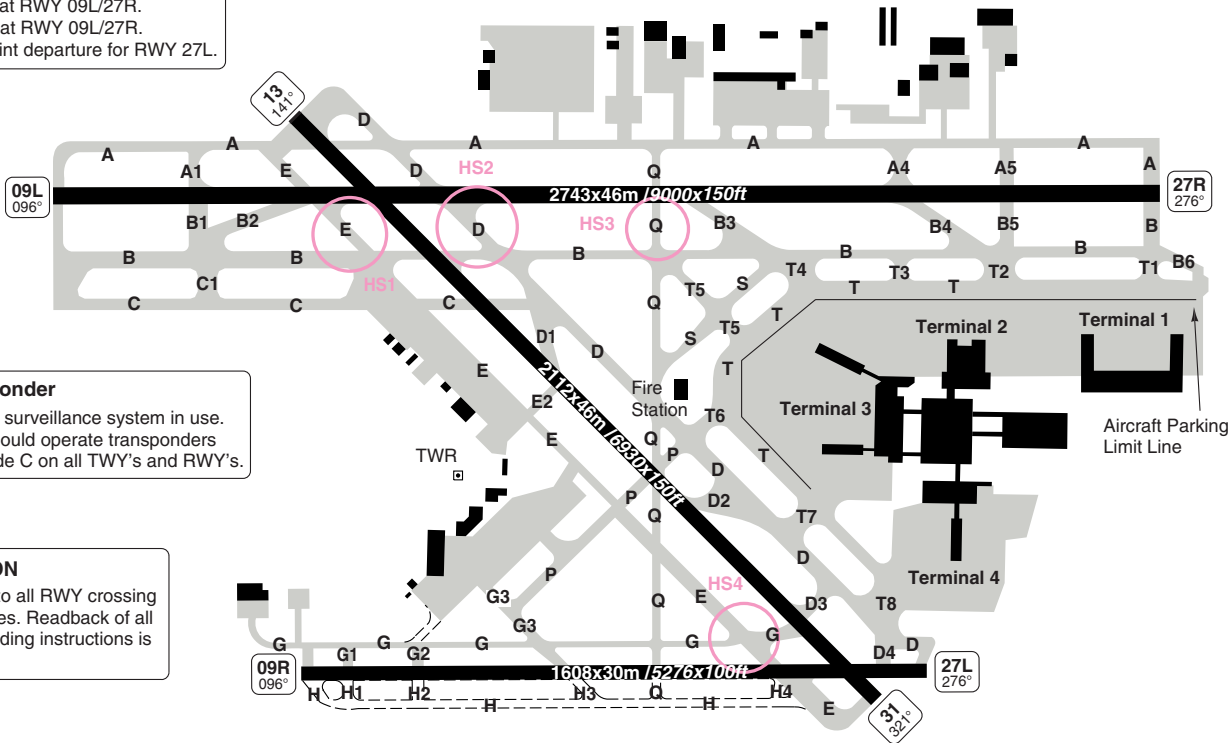
- HS1 TWY E at RWY 09L/27R.
- HS2 TWY D at RWY 09L/27R.
- HS3 TWY Q at RWY 09L/27R.
- HS4 TWY E int departure for RWY 27L.

**Transponder**

ASDE-X surveillance system in use. Pilots should operate transponders with mode C on all TWY's and RWY's.

**CAUTION**

Be alert to all RWY crossing clearances. Readback of all RWY holding instructions is required.



Change: TWY's.

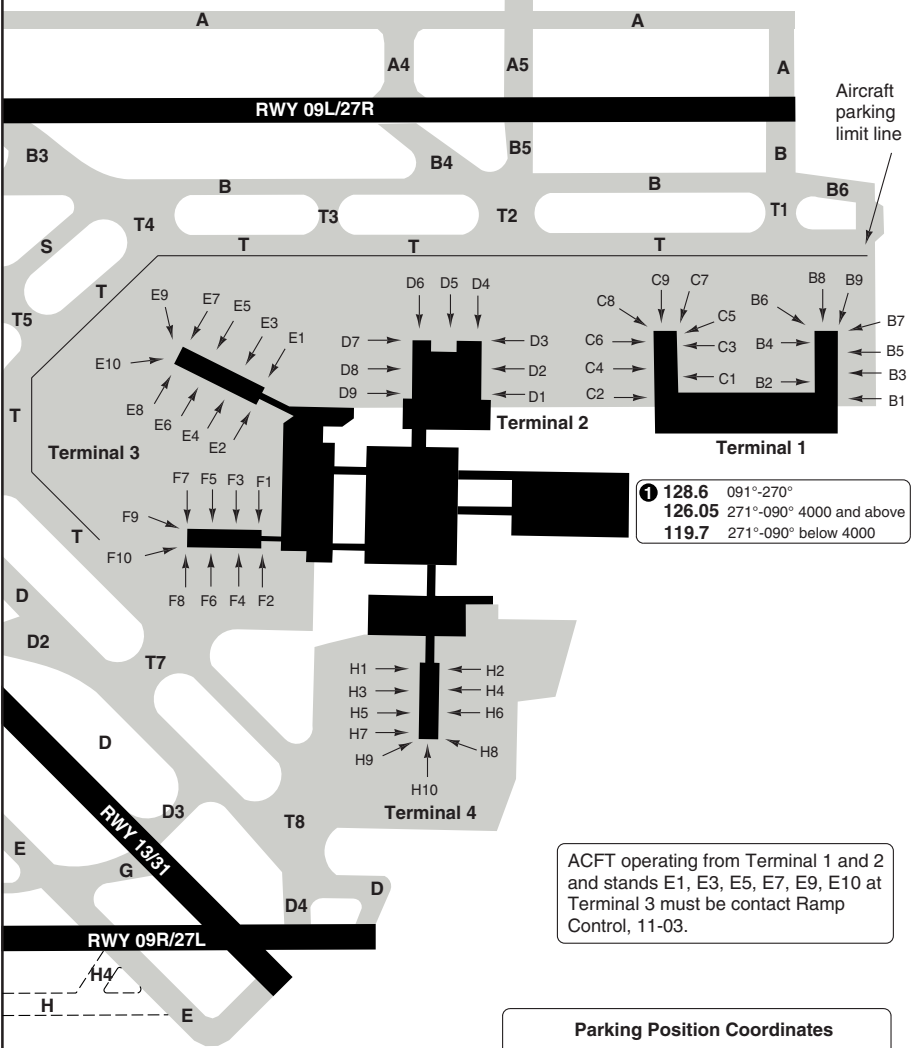
**THIS CHART IS A PART OF NAVIGRAPH NDAC AND IS INTENDED FOR FLIGHT SIMULATION USE ONLY**

**GROUND** Terminal Parking

Hollywood INTL FORT LAUDERDALE

10 - 3

Fort Lauderdale CLR 128.4	RAMP 118.175	PRE TAXI 128.4	GND 121.4 121.7	TWR 119.3 120.2	Miami DEP ① 128.6 126.05 119.7	Fort Lauderdale ATIS (D) 135.0
------------------------------	-----------------	-------------------	-----------------------	-----------------------	--------------------------------------	-----------------------------------



① 128.6	091°-270°
126.05	271°-090° 4000 and above
119.7	271°-090° below 4000

ACFT operating from Terminal 1 and 2 and stands E1, E3, E5, E7, E9, E10 at Terminal 3 must be contact Ramp Control, 11-03.

**Parking Position Coordinates**

B1	N 26 04.3	W080 08.3
B2-B9	N 26 04.4	W080 08.3
C1, C3, C5, C7, C9	N 26 04.4	W080 08.4
C2, C4, C6, C8	N 26 04.4	W080 08.5
D1-D9	N 26 04.4	W080 08.6
E1, E3	N 26 04.4	W080 08.8
E2	N 26 04.3	W080 08.8
F1-F10	N 26 04.2	W080 08.8
H1-H10	N 26 04.1	W080 08.6

© Navitech - kfl103gaorg0

Change: TWYs.

**THIS CHART IS A PART OF NAVIGRAPH NDAC AND IS INTENDED FOR FLIGHT SIMULATION USE ONLY**

## GENERAL

## Hollywood INTL FORT LAUDERDALE

10-4

## GENERAL

**1. SPEED**

MAX 250kt below 1000ft.

**2. WARNING**

2.1 Turbulence below 1000ft over landfill located 2nm west and over electric power plant 1.25nm east northeast of aerodrome.

2.2 Birds on and in vicinity of aerodrome.

2.3 Runway 13 aiming point markings located 357m/ 1171ft from runway THR.

2.4 All runways are noise sensitive.

**3. CIRCUITS**

Runway 09R and 27R: Right hand circuit.

**4. RUNWAY 09R/27L RESTRICTIONS**

4.1 Closed to all aircraft 03-12.

4.2 Closed to aircraft weighing more than 26.3t (58000lb).

4.3 Available only to aircraft with wingspan of less than 24m/ 78ft and approach speed of less than 121kt.

**5. TAXIWAY RESTRICTIONS**

5.1 Be alert to runway crossing clearance. Readback of all runway holding instructions is required.

5.2 Taxiways south of taxiway C and west of Runway 13/31, except taxiway E and P, width 15m/ 50ft or less.

5.3 All widebody aircraft departure Runway 09L should follow taxiway centre line into position on runway.

5.4 Aircraft with wingspan of more than 34m/ 112ft may use taxiway E between taxiway B and P by PPR only.

5.5 Taxiway B6 closed to aircraft with wingspan greater than 38m/ 126ft and tail more than 14m/ 46ft.

5.6 Intersection of taxiway G and Q not visible from TWR.

5.7 East side of Concourse B available only to aircraft with wingspan of less than 38m/125ft.

**6. NOISE ABATEMENT PROCEDURE ARRIVAL**

6.1 Maintain 6000ft until abeam aerodrome on downwind leg.

6.2 No turns to base leg until west of 09L/09R final approach fix, or offshore east of 27L/27R.

6.3 No VFR approaches or base legs until offshore.

**7. NOISE ABATEMENT PROCEDURE DEPARTURE**

7.1 Jet runups prohibited 04-12.

7.2 Noise abatement procedure Valid for jet and 4 - Engine aircraft only  
Runway 09L/09R, 27L/27R: Maintain runway heading to 3000ft for 3nm. Runway 13: Turn left 090° as soon as speed and altitude permit to 3000ft or east of shoreline  
Runway 31: Turn left 270° as soon as speed and altitude permit to 3000ft or 3nm.

**8. OBSTACLE DEPARTURE PROCEDURE**

Only to be used when no other SID has been assigned by ATC.

Runway 09L: Climb on HDG 093° to 500ft before turning left.

Runway 13: Climb on HDG 138° to 800ft before turning right.

Runway 27L: Climb on HDG 273° to 600ft before turning left.

Runway 27R: Climb on HDG 273° to 500ft before turning left.

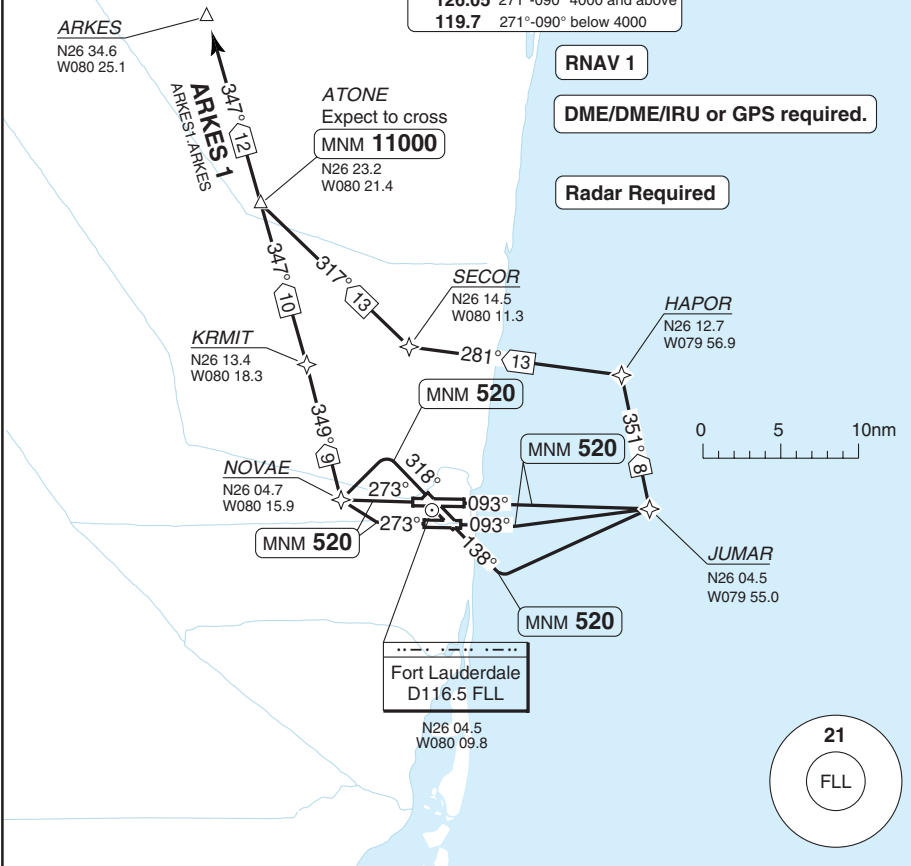
SID **RNAV** ARKES 1

Hollywood INTL FORT LAUDERDALE

Fort Lauderdale CLR <b>128.4</b>	PRE TAXI <b>128.4</b>	GND <b>121.4</b> <b>121.7</b>	TWR <b>119.3</b> <b>120.2</b>	Miami DEP ① <b>128.6</b> 091°-270° <b>126.05</b> 271°-090° 4000 and above <b>119.7</b> 271°-090° below 4000	Fort Lauderdale ATIS (D) <b>135.0</b>
-------------------------------------	--------------------------	-------------------------------------	-------------------------------------	--	--

TA 18000 | AD Elev 9

① **128.6** 091°-270°  
**126.05** 271°-090° 4000 and above  
**119.7** 271°-090° below 4000



**RNAV 1**

**DME/DME/IRU or GPS required.**

**Radar Required**

**30 - 1**

**COM:** DEP 126.05  
**NOTE:** Expect CLR to filed ALT 10min after DEP.  
**SPEED:** Max 250kt below **10000**. Jets accelerate to 250kt within 7nm of DEP, if unable, advice ATC.  
**MNM CLIMB GRADIENT** RWY 13, 27L/R, 31: 8.2% up to 520 (ATC).  
**ALT RESTRICTION:** Maintain or as assigned by ATC.

SID	RWY	Routeing	Altitude
ARKES 1	09L	Climb HDG 093° to <b>520</b> - JUMAR - HAPOR - SECOR - ATONE - ARKES.	ATONE MNM Expect to cross <b>11000</b>
	09R	Climb HDG 093° to <b>520</b> - turn left - JUMAR - HAPOR - SECOR - ATONE - ARKES.	
	13	Climb HDG 138° to <b>520</b> - turn left - JUMAR - HAPOR - SECOR - ATONE - ARKES.	
	27L	Climb HDG 273° to <b>520</b> - turn right - NOVAE - KRMIT - ATONE - ARKES.	
	27R	Climb HDG 273° to <b>520</b> - NOVAE - KRMIT - ATONE - ARKES.	
31	Climb HDG 318° to <b>520</b> - turn left - NOVAE - KRMIT - ATONE - ARKES.		

© Navitech - kfl101daorg0

Change: FLL freq.

SID **RNAV** BAHMA 2

Hollywood INTL FORT LAUDERDALE

Fort Lauderdale CLR <b>128.4</b>	PRE TAXI <b>128.4</b>	GND <b>121.4</b> <b>121.7</b>	TWR <b>119.3</b> <b>120.2</b>	Miami DEP ① <b>128.6</b> <b>126.05</b> <b>119.7</b>	Fort Lauderdale ATIS (D) <b>135.0</b>
-------------------------------------	--------------------------	-------------------------------------	-------------------------------------	---	--

TA 18000 AD Elev 9

Jet only

① **128.6** 091°-270°  
**126.05** 271°-090° 4000 and above  
**119.7** 271°-090° below 4000

Radar Required

RNAV 1

DME/DME/IRU or GPS required.

WEST ops only

Palm Beach  
D115.7 PBI

N26 40.8  
W080 05.2

SECOR  
Expect to cross

At **9000**

N26 14.5  
W080 11.3

BIYAK  
N26 16.0  
W079 39.1

ADKOQ  
N26 16.3  
W079 31.9

CORNL  
N26 16.7  
W079 20.7

HEMAG  
N26 11.5  
W080 17.0

MNM 520

**BAHMA 2**  
BAHMA2.BAHMA

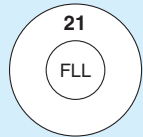
Fort Lauderdale  
D116.5 FLL

N26 04.5  
W080 09.8

NOVAE  
RWY 31  
MAX 220kt  
N26 04.7  
W080 15.9

MNM 520

BAHMA  
N25 56.5  
W079 07.8



**NOTE:** Expect CLR to filed ALT 10min after DEP.  
For non-GPS equipped ACFT: VOR FLL and PBI must be operational.

**COM:** DEP 126.05

**SPEED:** MAX 250kt below **10000**.

Jets: DEP RWY 27L/R: Accelerate to 250kt within 7nm of DEP, if unable advise ATC.  
DEP RWY 31: MAX 220kt until passing NOVAE.

**MNM CLIMB GRADIENT:** RWY 27L/R, 31: 8.2% up to 520 (ATC).

**ALT RESTRICTION:** Maintain **3000** or as assigned by ATC.

SID	RWY	Routeing	Altitude
BAHMA 2	27L	Climb on HDG 273° to <b>520</b> - turn right - NOVAE - HEMAG - SECOR - BIYAK - ADKOQ - CORNL - BAHMA.	SECOR At <b>9000</b>
	27R	Climb on HDG 273° to <b>520</b> - NOVAE - HEMAG - SECOR - BIYAK - ADKOQ - CORNL - BAHMA.	
	31	Climb on HDG 318° to <b>520</b> turn left - maintain 220kt to NOVAE - turn right - SECOR - BIYAK - ADKOQ - CORNL - BAHMA.	

Change: FLL freq.

SID **RNAV** BEECH 2

Hollywood INTL FORT LAUDERDALE

Fort Lauderdale CLR <b>128.4</b>	PRE TAXI <b>128.4</b>	GND <b>121.4</b> <b>121.7</b>	TWR <b>119.3</b> <b>120.2</b>	Miami DEP ① <b>128.6</b> <b>126.05</b> <b>119.7</b>	Fort Lauderdale ATIS (D) <b>135.0</b>
-------------------------------------	--------------------------	-------------------------------------	-------------------------------------	---	--

TA 18000 | AD Elev 9

① **128.6** 091°-270°  
**126.05** 271°-090° 4000 and above  
**119.7** 271°-090° below 4000

Jet only

EAST ops only

Radar Required

RNAV 1

DME/DME/IRU or GPS required.

Fort Lauderdale  
D116.5 FLL

N26 04.5  
W080 09.8

MNM 520

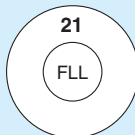
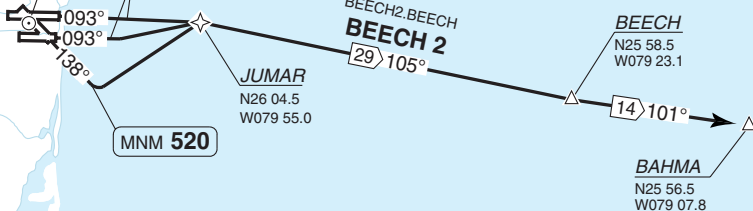
JUMAR  
N26 04.5  
W079 55.0

MNM 520

BEECH2.BEECH  
**BEECH 2**

BEECH  
N25 58.5  
W079 23.1

BAHMA  
N25 56.5  
W079 07.8



30 - 3

**NOTE:** Expect CLR to filed ALT 10min after DEP.

**COM:** DEP 126.05

**SPEED:** MAX 250kt below **10000**.

Jets accelerate to 250kt within 7nm of DEP, if unable, advice ATC.

**MNM CLIMB GRADIENT** RWY 13: 8.2% up to 520 (ATC).

**ALT RESTRICTION:** Maintain **3000** or as assigned by ATC.

SID	RWY	Routeing
BEECH 2	09L	Climb on HDG 093° to 520 - JUMAR - BEECH - BAHMA.
	09R	Climb on HDG 093° to 520 - turn left - JUMAR - BEECH - BAHMA.
	13	Climb on HDG 138° to 520 - turn left - JUMAR - BEECH - BAHMA.

Change: FLL freq.

**THIS CHART IS A PART OF NAVIGRAPH NDAC AND IS INTENDED FOR FLIGHT SIMULATION USE ONLY**

SID **RNAV** PRED A 1

Hollywood INTL FORT LAUDERDALE

Fort Lauderdale CLR <b>128.4</b>	PRE TAXI <b>128.4</b>	GND <b>121.4</b> <b>121.7</b>	TWR <b>119.3</b> <b>120.2</b>	Miami DEP ① <b>128.6</b> 091°-270° <b>126.05</b> 271°-090° 4000 and above <b>119.7</b> 271°-090° below 4000	Fort Lauderdale ATIS (D) <b>135.0</b>
-------------------------------------	--------------------------	-------------------------------------	-------------------------------------	--	--

TA 18000 | AD Elev 9

**Radar Required**

① **128.6** 091°-270°  
**126.05** 271°-090° 4000 and above  
**119.7** 271°-090° below 4000

**DME/DME/IRU or GPS required.**

**RNAV 1**

*SECOR*  
Expect to cross  
At **9000**

*PRED A*  
N26 21.5  
W079 30.7

*HEMAG*  
N26 11.5  
W080 17.0

**MNM 520**

*TURBO*  
N26 10.3  
W079 23.5

*PRED A1 PRED A*  
**PRED A 1**  
⑨ 057°

*BIYAK*  
N26 16.0  
W079 39.1

**30 - 4**

*NOVAE*  
MAX 220kt  
until passing  
N26 04.7  
W080 15.9

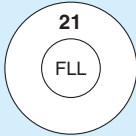
**MNM 520**

*JUMAR*  
N26 04.5  
W079 55.0



Fort Lauderdale  
D116.5 FLL

N26 04.5  
W080 09.8



**NOTE:** Expect CLR to filed ALT 10min after DEP.  
For non-GPS equipped ACFT:  
DEP RWY 27R, 31: VOR FLL and PBI must be operational.  
DEP RWY 27L: VOR PBI must be operational.

**COM:** DEP 126.05

**SPEED:** MAX 220kt until passing NOVAE. MAX 250kt below **10000**.  
Jets DEP RWY 09L/R, 13: Accelerate to 250kt within 7nm of DEP, if unable, advice ATC.

**MNM CLIMB GRADIENT:** RWY 13, 27L/R, 31: 8.2% up to 520 (ATC).

**ALT RESTRICTION:** Maintain **8000** or as assigned by ATC.

SID	RWY	Routeing	Altitude
PRED A 1	09L	Climb on HDG 093° to <b>520</b> - JUMAR - TURBO - BIYAK - PRED A.	
	09R	Climb on HDG 093° to <b>520</b> - turn left - JUMAR - TURBO - BIYAK - PRED A.	
	13	Climb on HDG 138° to <b>520</b> - turn left - JUMAR - TURBO - BIYAK - PRED A.	
	27L	Climb on HDG 273° to <b>520</b> - turn right - NOVAE - HEMAG - SECOR - BIYAK - PRED A.	SECOR At <b>9000</b>
	27R	Climb on HDG 273° to <b>520</b> - NOVAE - HEMAG - SECOR - BIYAK - PRED A.	
31	Climb on HDG 318° to <b>520</b> - turn left - NOVAE - turn right - HEMAG - SECOR - BIYAK - PRED A.		

© Navtech - kflld4daorg0

Change: FLL freq.

SID **RNAV** THNDR 1

Hollywood INTL FORT LAUDERDALE

Fort Lauderdale CLR <b>128.4</b>	PRE TAXI <b>128.4</b>	GND <b>121.4</b> <b>121.7</b>	TWR <b>119.3</b> <b>120.2</b>	Miami DEP ① <b>128.6</b> 091°-270° <b>126.05</b> 271°-090° 4000 and above <b>119.7</b> 271°-090° below 4000	Fort Lauderdale ATIS (D) <b>135.0</b>
-------------------------------------	--------------------------	-------------------------------------	-------------------------------------	--	--

TA 18000 AD Elev 9

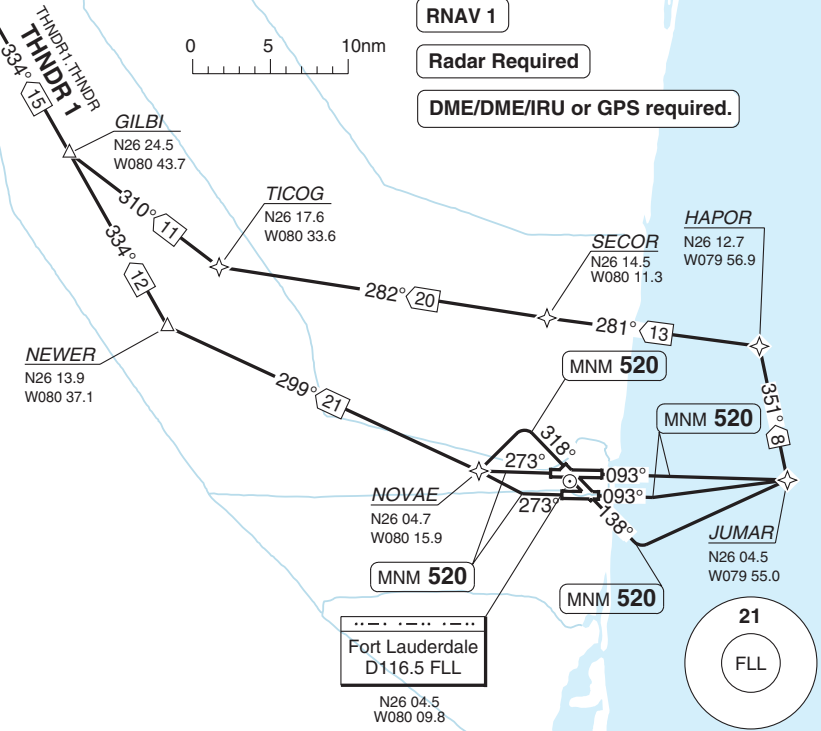
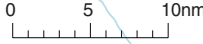
**THNDR**  
N26 37.6  
W080 52.0

① **128.6** 091°-270°  
**126.05** 271°-090° 4000 and above  
**119.7** 271°-090° below 4000

**RNAV 1**

**Radar Required**

**DME/DME/IRU or GPS required.**



**NOTE:** Expect CLR to filed ALT 10min after DEP.  
For non-GPS equipped ACFT:  
DEP RWY 27L/R, 31: VOR FLL must be operational.

**COM:** DEP 126.05

**SPEED:** Jets DEP RWY 09L/R, 13: Accelerate to 250kt within 7nm of DEP, if unable, advice ATC.  
MAX 250kt below **10000**.

**MNM CLIMB GRADIENT:** RWY 13, 31: 8.2% up to 520 (ATC).

**ALT RESTRICTION:** Maintain **3000** or as assigned by ATC.

SID	RWY	Routeing
THNDR 1	09L	Climb on HDG 093° to <b>520</b> - JUMAR - turn left - HAPOR - SECOR - GILBI - THNDR.
	09R	Climb on HDG 093° to <b>520</b> - turn left - JUMAR - turn left - HAPOR - SECOR - TICOG - GILBI - THNDR.
	13	Climb on HDG 138° to <b>520</b> - turn left - JUMAR - turn left - HAPOR - SECOR - TICOG - GILBI - THNDR.
	27L	Climb on HDG 273° to <b>520</b> - turn right - NOVAE - NEWER - GILBI - THNDR.
	27R	Climb on HDG 273° to <b>520</b> - NOVAE - NEWER - GILBI - THNDR.
31	Climb on HDG 318° to <b>520</b> - turn left - NOVAE - NEWER - GILBI - THNDR.	

© Navitech - kfl105daorg

Change: FLL freq.

30 - 5

SID **RNAV** ZAPPA 1

Hollywood INTL FORT LAUDERDALE

Fort Lauderdale CLR <b>128.4</b>	PRE TAXI <b>128.4</b>	GND <b>121.4</b> <b>121.7</b>	TWR <b>119.3</b> <b>120.2</b>	Miami DEP ① <b>128.6</b> 091°-270° <b>126.05</b> 271°-090° 4000 and above <b>119.7</b> 271°-090° below 4000	Fort Lauderdale ATIS (D) <b>135.0</b>
-------------------------------------	--------------------------	-------------------------------------	-------------------------------------	--	--

TA 18000 AD Elev 9

**Radar Required**

**RNAV 1**

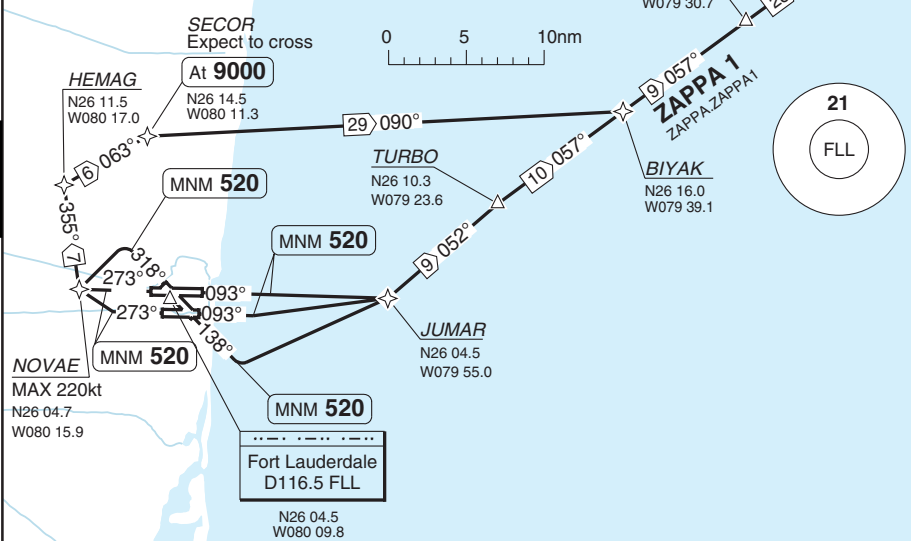
**DME/DME/IRU or GPS required.**

Palm Beach  
D115.7 PBI  
N26 40.8  
W080 05.2

① **128.6** 091°-270°  
**126.05** 271°-090° 4000 and above  
**119.7** 271°-090° below 4000

ZAPPA  
N26 37.8  
W079 05.9

30 - 6



**NOTE:** Expect CLR to filed ALT 10min after DEP.

For non-GPS equipped ACFT:  
VOR FLL and PBI must be operational.

**COM:** DEP 126.05

**SPEED:** MAX 220kt until passing NOVAE. MAX 250kt below 10000.  
Jets DEP RWY 09L/R, 13: Accelerate to 250kt within 7nm of DEP, if unable, advice ATC.

**MNM CLIMB GRADIENT:** RWY 13, 27L/R, 31: 8.2% up to 520 (ATC).

**ALT RESTRICTION:** Maintain **3000** or as assigned by ATC.

SID	RWY	Routeing	Altitude
PREDA 1	09L	Climb on HDG 093° to 520 - JUMAR - HEMAG - SECOR - BIYAK - PRED A - ZAPPA.	
	09R	Climb on HDG 093° to 520 - turn left - JUMAR - HEMAG - SECOR - BIYAK - PRED A - ZAPPA.	
	13	Climb on HDG 138° to 520 - turn left - JUMAR - HEMAG - SECOR - BIYAK - PRED A - ZAPPA.	
	27L	Climb on HDG 273° to 520 - turn right - NOVAE - HEMAG - SECOR - BIYAK - PRED A - ZAPPA.	SECOR At 9000
	27R	Climb on HDG 273° to 520 - NOVAE - HEMAG - SECOR - BIYAK - PRED A - ZAPPA.	
	31	Climb on HDG 318° to - 520 - turn left - NOVAE - turn right - HEMAG - SECOR - BIYAK - PRED A - ZAPPA.	

© Navitech - kflf06daorg0

Change: FLL freq.

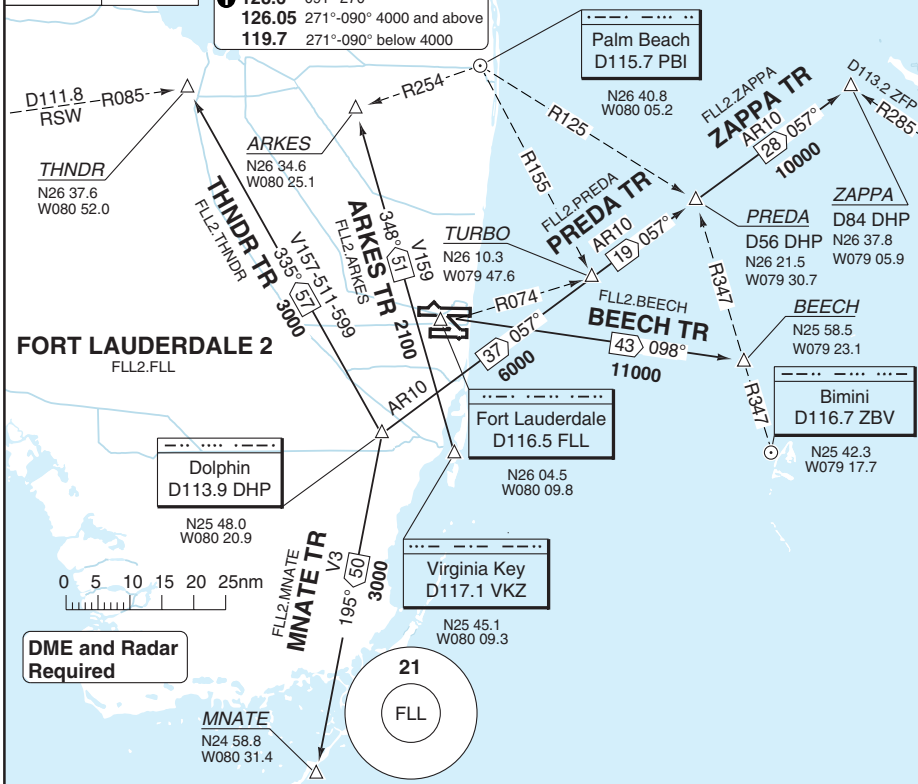
SID FORT LAUDERDALE 2

Hollywood INTL FORT LAUDERDALE

Fort Lauderdale CLR <b>128.4</b>	PRE TAXI <b>128.4</b>	GND <b>121.4</b> <b>121.7</b>	TWR <b>119.3</b> <b>120.2</b>	Miami DEP ① <b>128.6</b> <b>126.05</b> <b>119.7</b>	Fort Lauderdale ATIS (D) <b>135.0</b>
-------------------------------------	--------------------------	-------------------------------------	-------------------------------------	---	--

TA 18000 AD Elev 9

① **128.6** 091°-270°  
**126.05** 271°-090° 4000 and above  
**119.7** 271°-090° below 4000



**NOTE:** Expect further CLR to filed ALT 10min after DEP.  
**SPEED:** MAX 250kt below 10000.  
**ALT RESTRICTION:** Maintain **3000** or assigned lower ALT.

SID	RWY	Routeing
<b>FORT LAUDERDALE 2</b>	09R, 31	Climb on assigned HDG, then ...
	09L/27R	Climb on assigned HDG. If assigned left turn, climb to <b>500</b> before turn...
	13	Climb on assigned HDG. If assigned right turn, climb to <b>800</b> before turn...
	27L	Climb on assigned HDG. If assigned left turn, climb to <b>600</b> before turn... ... expect RAD vectors to appropriate transition.
<b>Transition</b>	All	<b>Routeing</b>
<b>ARKES</b>		VKZ - ARKES - then as filed.
<b>BEECH</b>		FLL - BEECH - then as filed.
<b>MNATE</b>		DHP - MNATE - then as filed.
<b>PRED</b>		DHP - PRED - then as filed. If filed via BR70V, expect RAD vectors to filed route after PRED. If radio contact is not established by PRED, turn right to HDG 120° and join filed route.
<b>THNDR</b>		DHP - THNDR - then as filed.
<b>ZAPPA</b>		DHP - ZAPPA - then as filed.

© Navtech - kfl107daorg

Reverse side blank

Change: FLL freq.

# STAR **RNAV** CURSO 2

# Hollywood INTL FORT LAUDERDALE

Miami APP 124.85	Fort Lauderdale TWR 119.3 120.2	GND 121.4 121.7	ATIS (D) 135.0
---------------------	---------------------------------------	-----------------------	-------------------

TL ATC AD Elev 9

**Radar Required**

**RNAV 1**

**KEY WEST TR:**  
For non-GPS equipped aircraft PHK DME must be operational.

**MARATHON TR:**  
For non-GPS equipped aircraft, PHK and EYW DME's must be operational.

**SPEED**  
Max 250kt below 10000

**JAREM**  
N26 05.4  
W080 45.2

**HOLID**  
N26 04.7  
W080 31.3

Expect RAD vectors prior to JAREM.

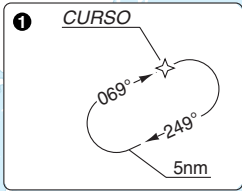
Fort Lauderdale  
D116.5 FLL  
N26 04.5  
W080 09.8

**DVALL**  
N25 30.9  
W080 59.9

**MNNDY**  
N25 35.5  
W080 48.9

**CURSO**  
Expect to cross at 250kt  
At 11000

N25 33.4  
W080 54.3



10nm  
223°  
15  
29 043°  
10000

**CARNU**  
N25 08.3  
W081 19.5

**TIGAR**  
N24 56.8  
W081 29.5

**STRAP**  
N24 49.9  
W081 35.4

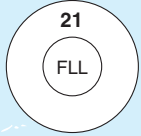
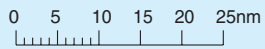
Key West  
D113.5 EYW  
N24 35.2  
W081 48.0

**MARATHON TR**  
MTH, CURSO2

Marathon  
260 MTH

N24 42.7  
W081 05.7

**DME/DME/IRU or GPS required.**



40 - 1

© Navtech - kflf101aaorg0

Change: FLL freq.

**THIS CHART IS A PART OF NAVIGRAPH NDAC AND IS INTENDED FOR FLIGHT SIMULATION USE ONLY**

# STAR **RNAV** FISEL 2

# Hollywood INTL FORT LAUDERDALE

Miami APP <b>118.1</b> <b>124.85</b>	Fort Lauderdale TWR <b>119.3</b> <b>120.2</b>	GND <b>121.4</b> <b>121.7</b>	ATIS (D) <b>135.0</b>
--	---	-------------------------------------	--------------------------

TL ATC AD Elev 9 Chart not to scale

**For non-GPS equipped ACFT:**  
 ORMOND BEACH, CRANS and MELBOURNE TR:  
 PBI DME must be operational.  
 FREEPORT TR: PBI and FLL DMEs must be operational.  
 VERA BEACH TR: PHK, PBI and FLL DMEs  
 must be operational.

**RNAV 1**

**Radar Required**

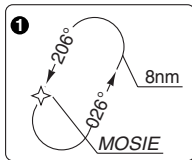
ACFT with wingspan less than 24m/ 78ft and APCH speed less than 121kt, expect RWY 09R/27L.

**SPEED**  
MAX 250kt below 10000

**DME/DME/IRU or GPS required.**

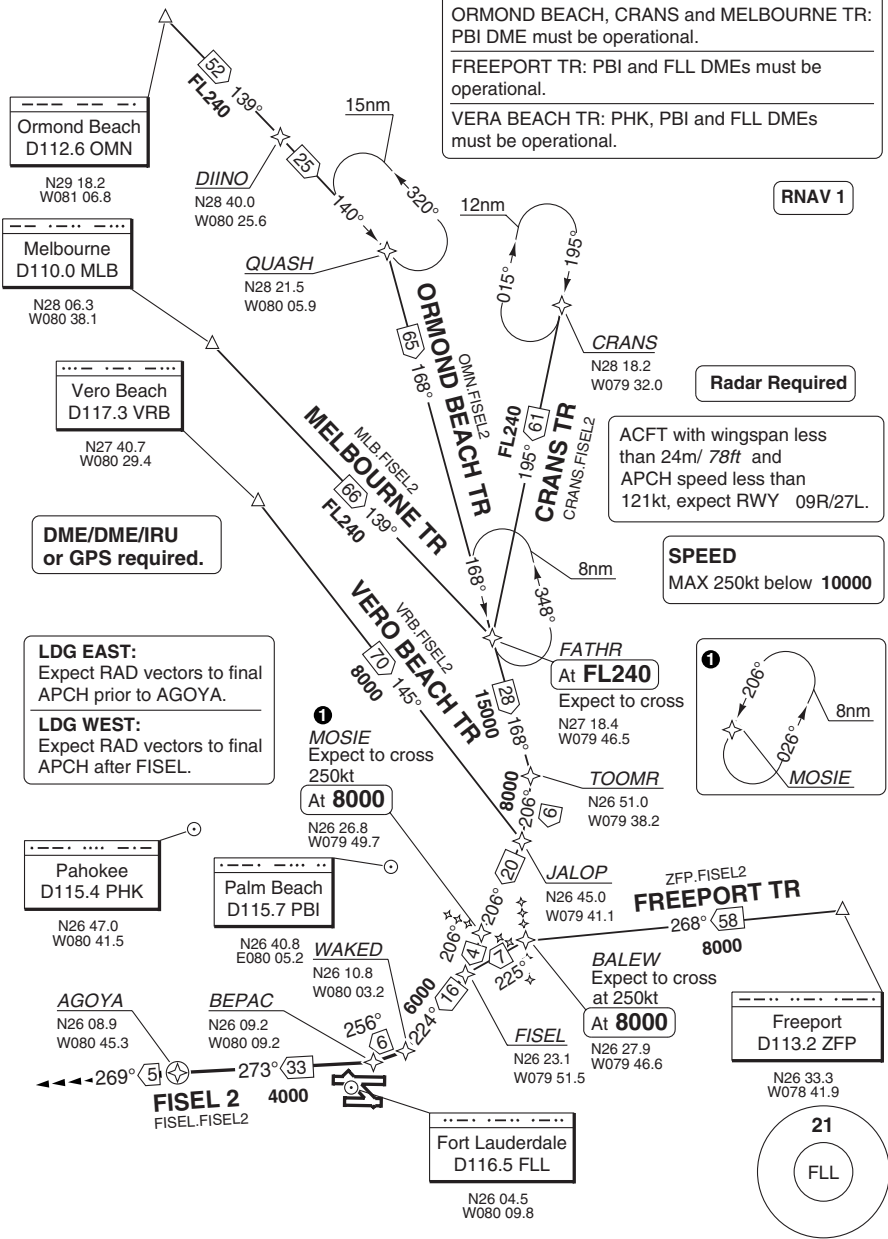
**LDG EAST:**  
Expect RAD vectors to final APCH prior to AGOYA.

**LDG WEST:**  
Expect RAD vectors to final APCH after FISEL.



40 - 2

© Navtech - kfl102aaorg



Change: FLL freq.

**THIS CHART IS A PART OF NAVIGRAPH NDAC AND IS INTENDED FOR FLIGHT SIMULATION USE ONLY**

# STAR **RNAV** JINGL 1

# Hollywood INTL FORT LAUDERDALE

Miami APP <b>133.775</b>	Fort Lauderdale TWR <b>119.3</b> <b>120.2</b>	GND <b>121.4</b> <b>121.7</b>	ATIS (D) <b>135.0</b>
-----------------------------	---	-------------------------------------	--------------------------

TL ATC AD Elev 9 Chart not to scale

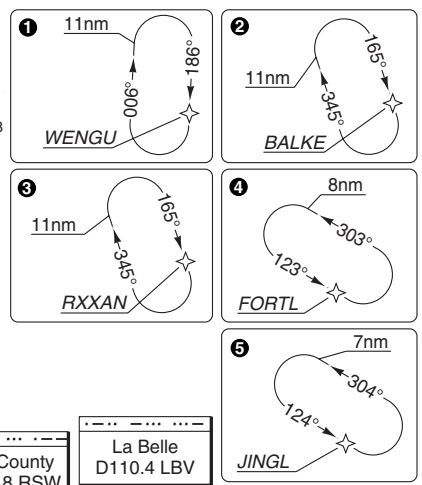
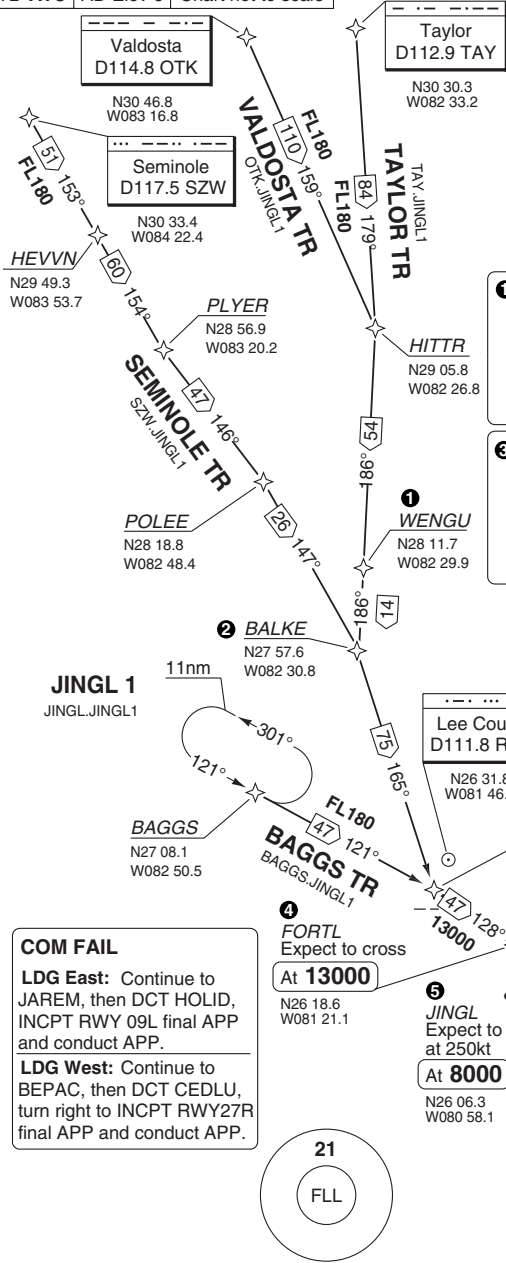
**Radar Required**

**SPEED**  
Max 250kt below 10000

**For non-GPS equipped ACFT:**  
LBV, RSW and FLL must be operational

**DME/DME/IRU or GPS required.**

**RNAV 1**



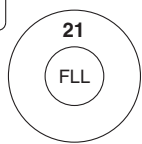
**JAREM**  
LDG West  
Expect to cross  
**At 7000**  
N26 05.4 W080 45.3

**4 FORTL**  
Expect to cross  
**At 13000**  
N26 18.6 W081 21.1

**5 JINGL**  
Expect to cross  
at 250kt  
**At 8000**  
N26 06.3 W080 58.1

**Legend**  
.....> Com Fail

**Fort Lauderdale**  
D116.5 FLL  
N26 04.5 W080 09.8



40 - 3

© Navtech - kfl103aaorg

Change: FLL freq.

**THIS CHART IS A PART OF NAVIGRAPH NDAC AND IS INTENDED FOR FLIGHT SIMULATION USE ONLY**

Miami APP <b>128.6</b> 4000 and below <b>119.45</b> 5000 and above	Fort Lauderdale TWR <b>119.3</b> <b>120.2</b>	GND <b>121.4</b> <b>121.7</b>	ATIS (D) <b>135.0</b>
--	---	-------------------------------------	--------------------------

TL	ATC	AD Elev	9
----	-----	---------	---

Fort Lauderdale  
D116.5 FLL

N26 04.5  
W080 09.8

**FRRDY**  
N25 60.0  
W080 28.4

**KEVEY**  
N25 59.3  
W079 57.2

**WAVUN 1**  
4000  
N25 53.7  
W079 44.0

**SPEED**  
MAX 250kt below 10000

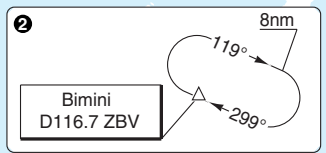
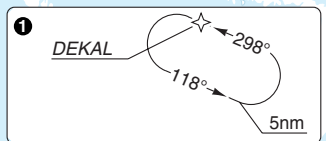
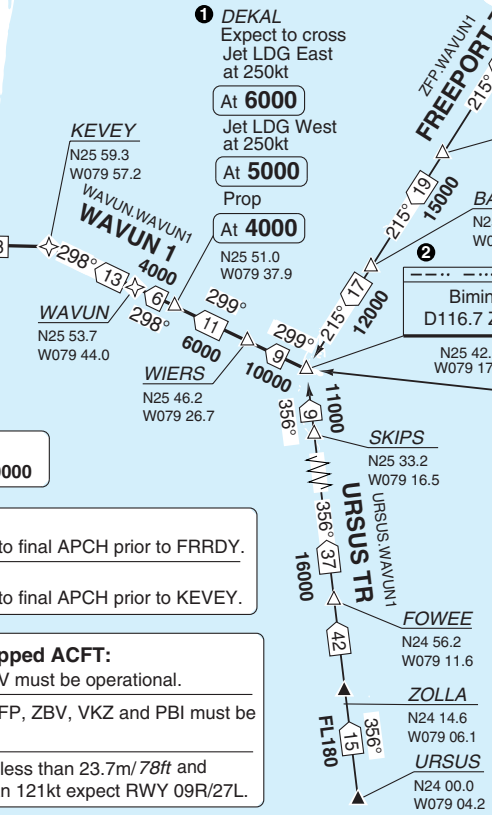
**LDG East:**  
Expect RAD vectors to final APCH prior to FRRDY.

**LDG West:**  
Expect RAD vectors to final APCH prior to KEVEY.

**For non-GPS equipped ACFT:**  
URSUS TR: VOR ZBV must be operational.

NASSAU TR: VOR ZFP, ZBV, VKZ and PBI must be operational.

ACFT with wingspan less than 23.7m/ 78ft and APCH speed less than 121kt expect RWY 09R/27L.



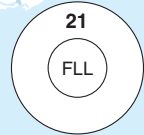
**DME/DME/IRU or GPS required.**

**Radar Required**

**RNAV 1**

Nassau  
D112.7 ZQA

N25 01.5  
W077 26.8



STAR BLUFI 1

Hollywood INTL FORT LAUDERDALE

Miami APP 133.775	Fort Lauderdale TWR 119.3 120.2	GND 121.4 121.7	ATIS (D) 135.0
----------------------	---------------------------------------	-----------------------	-------------------

PROP ONLY

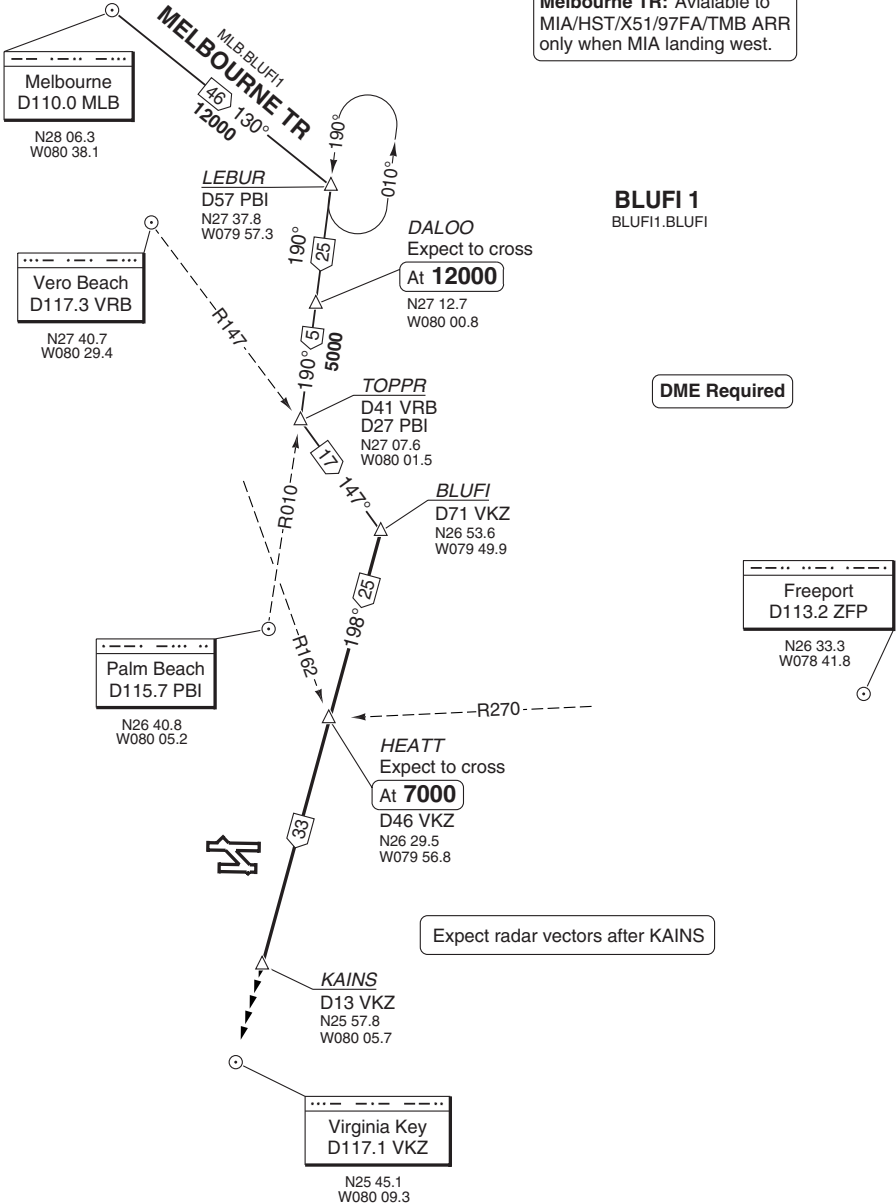
TL ATC AD Elev 9 Chart not to scale

Melbourne TR: Avialable to MIA/HST/X51/97FA/TMB ARR only when MIA landing west.

BLUFI 1  
BLUFI1.BLUFI

DME Required

40 - 5



# FORT LAUDERDALE

# STAR DEKAL 2

Miami APP <b>124.85</b>	Fort Lauderdale TWR <b>119.3</b> <b>120.2</b>	GND <b>121.4</b> <b>121.7</b>	ATIS (D) <b>135.0</b>
----------------------------	---	-------------------------------------	--------------------------

TL ATC AD Elev 9

Fort Lauderdale  
D116.5 FLL

N26 04.5  
W080 09.8



DEKAL  
Jets: Expect CLR to cross  
LDG East  
at 250kt

At **6000**

LDG West  
at 250kt

At **5000**

R115/D32 FLL  
N25 51.0  
W079 37.9

From over DEKAL  
expect RAD vectors  
to final APP.

Bimini  
D116.7 ZBV

N25 42.3  
W079 17.7

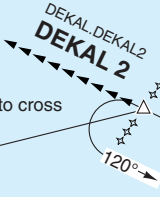
FREEPORT TR  
ZFP, DEKAL2  
215° 6000

Freeport  
D113.2 ZFP

N26 33.3  
W078 41.9

DME or RNAV required

SPEED  
Max 250kt below 10000

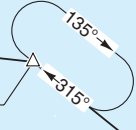


URSUS TR  
URSUS, DEKAL2  
357° 10000

URSUS  
N24 00.0  
W079 04.2

280° 58  
6000

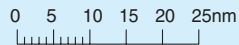
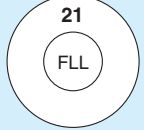
CAREY  
N 25 35.9  
W078 13.8



NASSAU TR  
ZQA, DEKAL2  
315° 55  
6000

Nassau  
D112.7 ZQA

N25 01.5  
W077 26.8

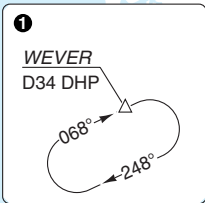


# STAR DVALL 1

# Hollywood INTL FORT LAUDERDALE

Miami APP <b>120.5</b>	Fort Lauderdale TWR <b>119.3</b> <b>120.2</b>	GND <b>121.4</b> <b>121.7</b>	ATIS (D) <b>135.0</b>
---------------------------	---	-------------------------------------	--------------------------

TL ATC AD Elev 9



**WEVER**  
D34 DHP  
N25 33.1  
W080 54.8

**DVALL**  
D39 DHP  
D71 EYW  
N25 30.9  
W080 59.9

**Dolphin**  
D113.9 DHP  
N25 48.0  
W080 20.9

**Fort Lauderdale**  
D116.5 FLL  
N26 04.5  
W080 09.8

**DVALL DVALL 1**  
29 068°

**FAMIN**  
N25 35.1  
W080 50.3

**CARNU**  
D42 EYW  
N25 08.3  
W081 19.5

Expect RAD vectors to Final APP after FAMIN

**KEY WEST TR**  
EYW DVALL 1  
42 037°  
2000

**Key West**  
D113.5 EYW  
N24 35.2  
W081 48.0

**MARATHON TR**  
MTH DVALL 1  
48 009°  
5000

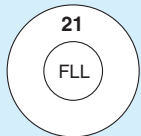
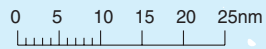
**Marathon**  
260 MTH  
N24 42.7  
W081 05.7

DME Required

**SPEED**  
Max 250kt below 10000

40 - 7

© Navtech - kfl107aaorg0



Change: FLL freq.

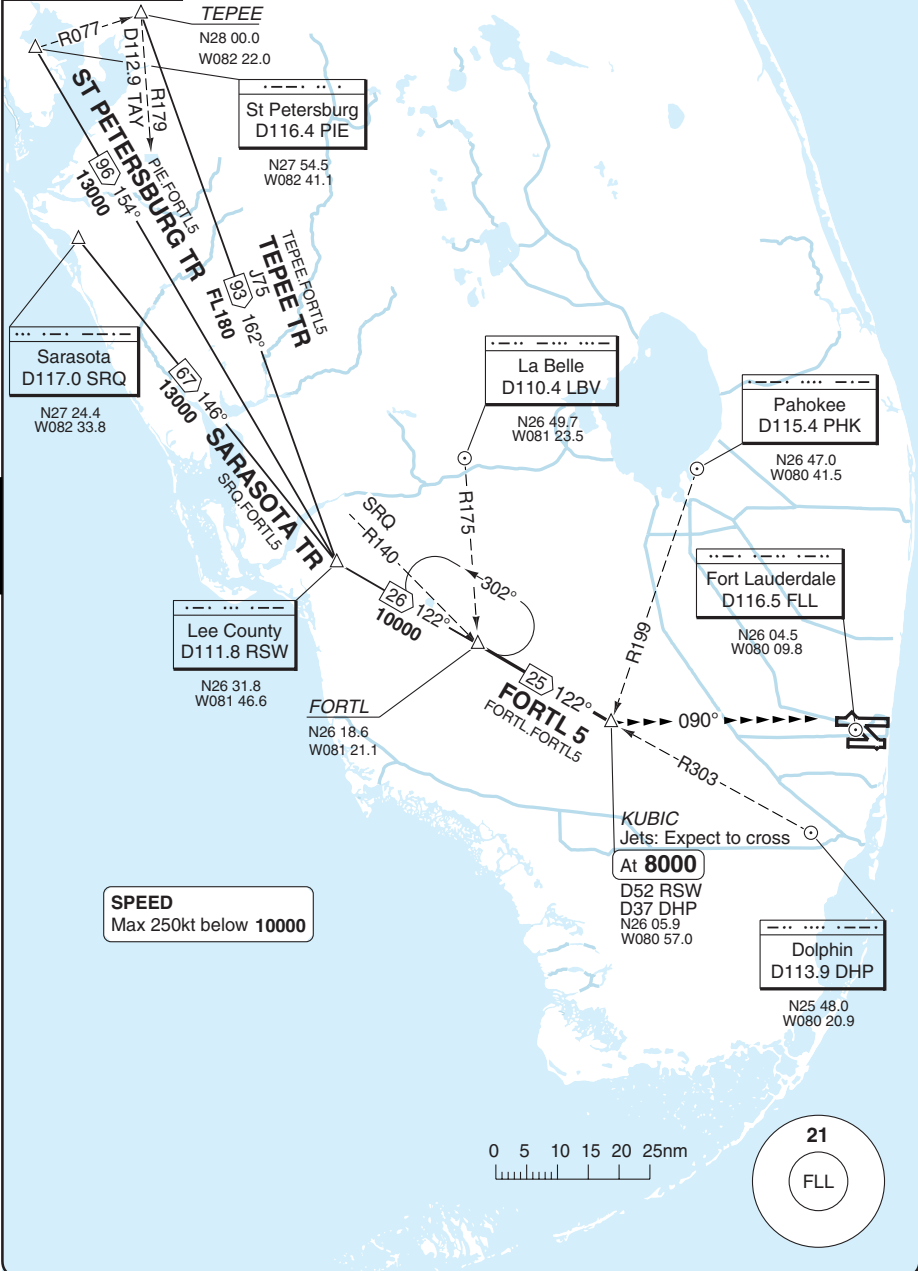
**THIS CHART IS A PART OF NAVIGRAPH NDAC AND IS INTENDED FOR FLIGHT SIMULATION USE ONLY**

# STAR FORTL 5

# Hollywood INTL FORT LAUDERDALE

Miami APP <b>133.775</b>	Fort Lauderdale TWR <b>119.3</b> <b>120.2</b>	GND <b>121.4</b> <b>121.7</b>	ATIS (D) <b>135.0</b>
-----------------------------	---	-------------------------------------	--------------------------

TL ATC AD Elev 9



40 - 8

© Navtech - kfl108aaorg0

Change: fill freq, tracks, radials, designator.

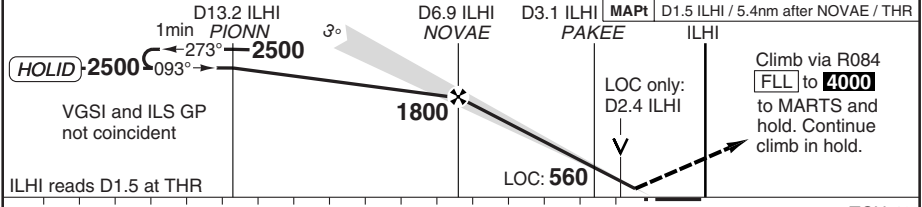
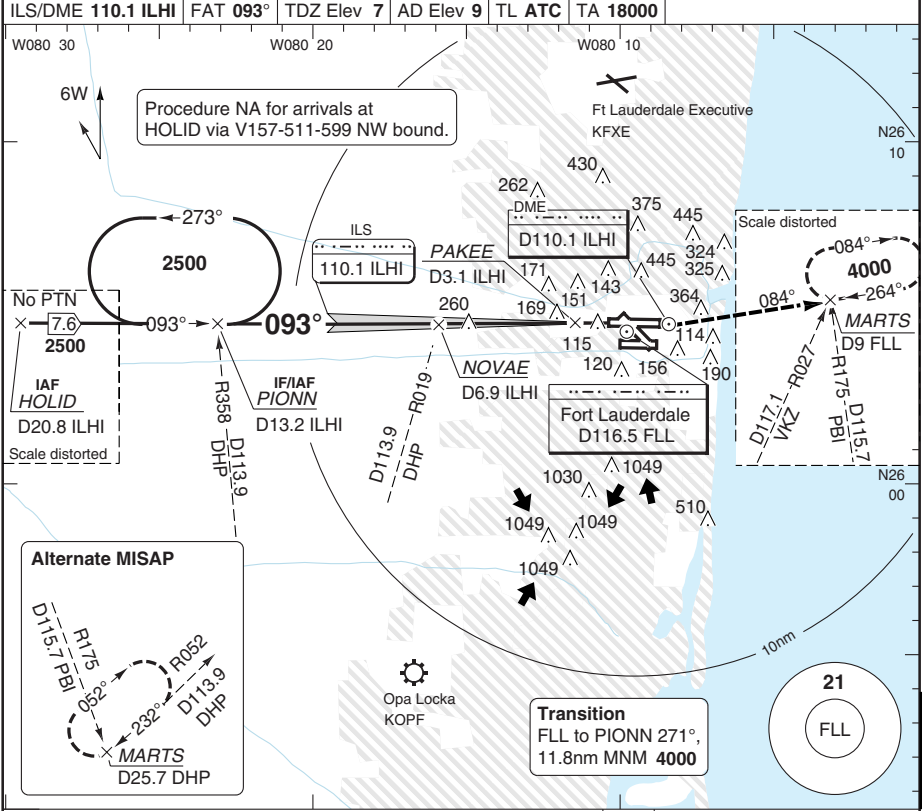
**THIS CHART IS A PART OF NAVIGRAPH NDAC AND IS INTENDED FOR FLIGHT SIMULATION USE ONLY**



ILS RWY 09L

Hollywood INTL FORT LAUDERDALE

Miami APP		Fort Lauderdale TWR		GND	ATIS (D)	
128.6	091°-270°	133.775	271°-090°	4000ft and above	119.3	
118.1	271°-090°	below 4000ft			120.2	
ILS/DME 110.1 ILHI		FAT 093°	TDZ Elev 7	AD Elev 9	TL ATC	TA 18000

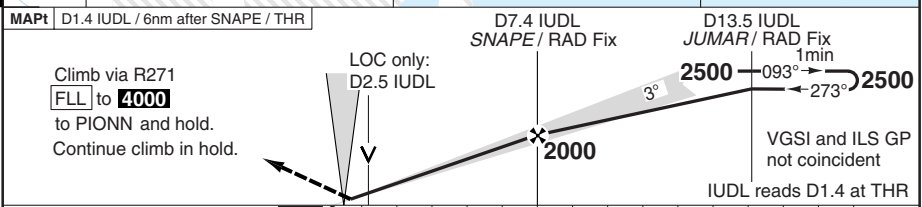
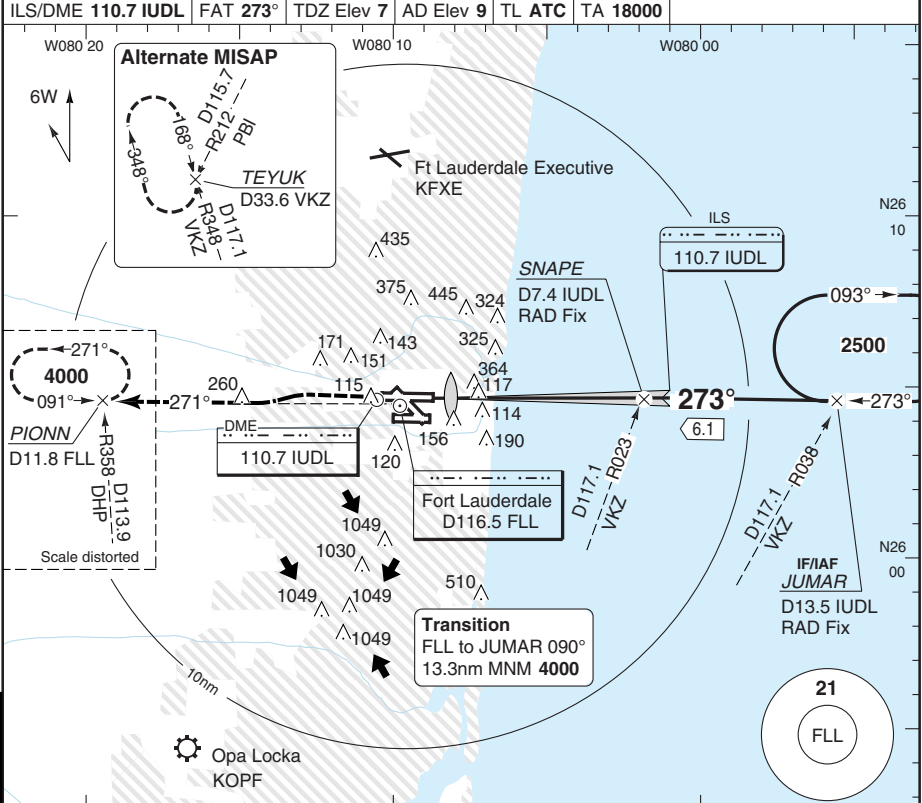


AMD 21						TCH 48												
nm	17	16	15	14	13	12	11	10	9	8	7	6	5	4	3	2	1	0
ACFT	ILS		LOC+DME		LOC		Circling ⓐ		DME ILHI		3.0° ALT		LDA 2567x46 8423x150ft P 3°R (68)					
C	260 (250) 4000ft		380 (373) 4000ft		560 (553) 6000ft		680 (671) 2sm		9.1	2500	8	2160						
D							710 (700) 2½sm		7	1840	6	1510						
GS	80	100	120	140	160	ⓐ AUTH REQ, otherwise 1010 (1000) / 3sm.		5	1190	4	870							
ROD 3.0°	440	540	650	760	870			3	540	3	540							
FAF-MAPt	4:03	3:14	2:42	2:19	2:01			2.5	380									

# ILS RWY 27R

# Hollywood INTL FORT LAUDERDALE

Miami APP		Fort Lauderdale TWR		GND	ATIS (D)	
128.6	091°-270°	133.775	271°-090°	4000ft and above	119.3	
118.1	271°-090°	below 4000ft			120.2	
ILS/DME 110.7 IUDL		FAT 273°	TDZ Elev 7	AD Elev 9	TL ATC	TA 18000



TCH 49		DME 3.1°		LDA 2559x46	
ACFT		IUDL ALT		8394x150ft	
STATE	C	260 (250)	420 (413)	8	2200
	D	4000ft	4000ft	7	1870
Circling		DME 3.1°		6	
680 (671)		IUDL ALT		5	
2sm		8.9		2500	
710 (700)		7		1550	
2½sm		6		1230	
GS		5		900	
80		4		580	
100		3		420	
120		2.5			
140					
160					
ROD 3.1°					
440					
550					
650					
760					
870					
FAF-MAPt					
4:30					
3:35					
3:00					
2:34					
2:15					

50 - 2  
AMID 9  
© Navtech - kflld2aiip00

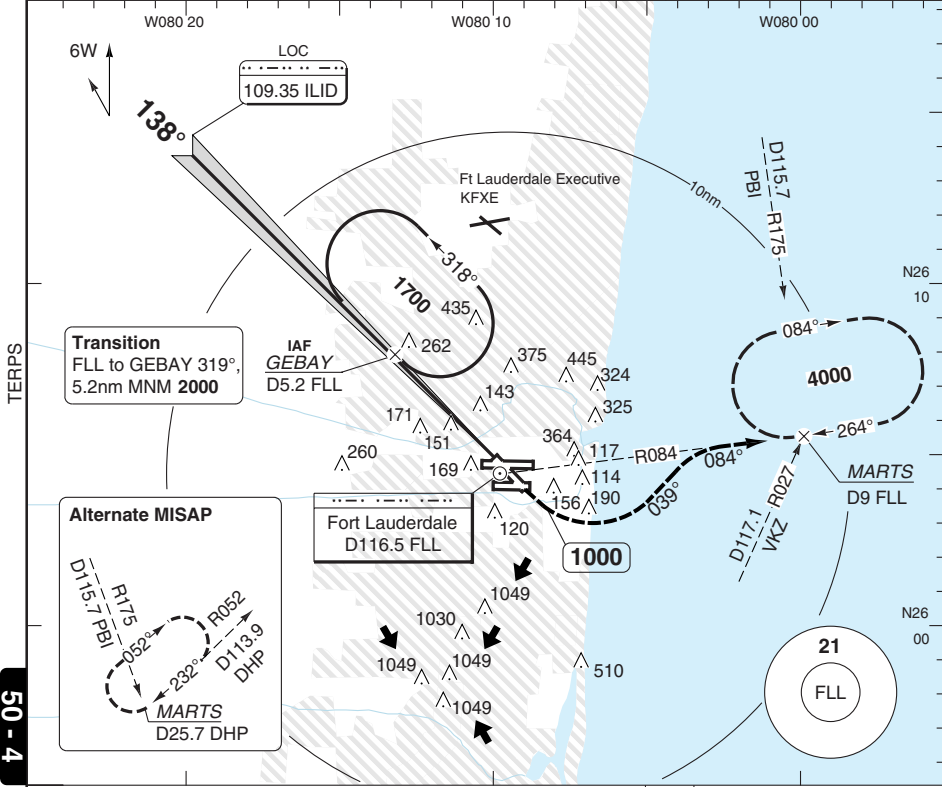


LOC RWY 13 LOC/DME

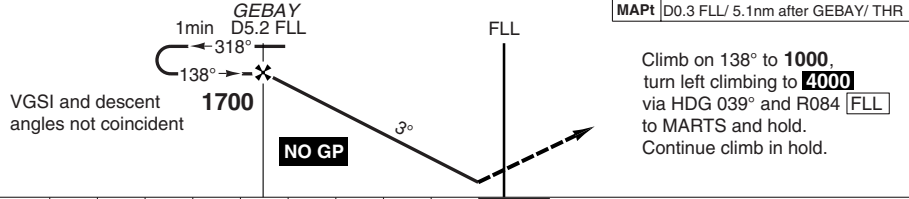
Hollywood INTL FORT LAUDERDALE

Miami APP		Fort Lauderdale TWR		GND	ATIS (D)
128.6	091°-270° 133.775 271°-090° 4000ft and above	119.3	121.4	135.0	
118.1	271°-090° below 4000ft	120.2	121.7		

LOC	109.35 ILID	FAT 138°	TDZ Elev 7	AD Elev 9	TL ATC	TA 18000
-----	-------------	----------	------------	-----------	--------	----------



50 - 4  
AMD 1



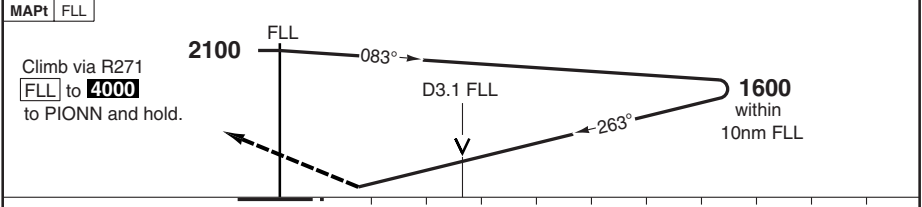
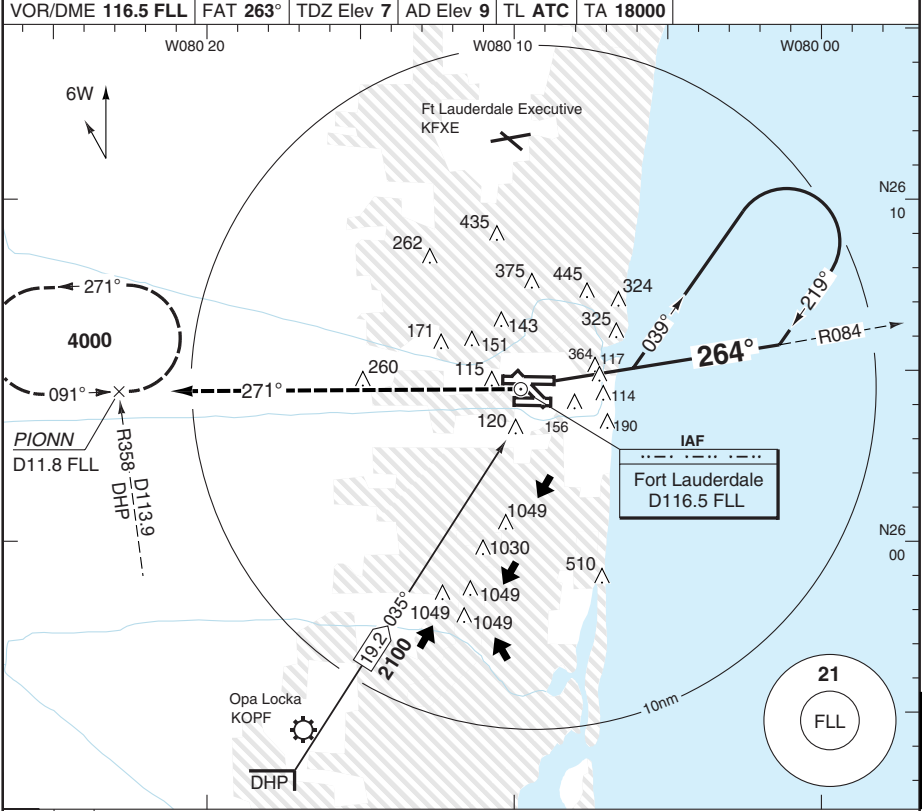
			TCH 55				
ACFT	LOC+DME	Circling <b>a</b>	<b>a</b> AUTH REQ, otherwise 1010 (1000) / 3sm.				
C	380 (373) 1sm	680 (671) 2sm					
D	380 (373) 1½sm	710 (700) 2½sm					
GS	80	100	120	140	160		
ROD 3.0°	430	540	650	750	860		
			DME FLL	3.0° ALT	LDA 2112x46 6930x150ft P 3° (75)		
			5	1500			
			4	1180			
			3	860			
			2	540			
			1.5	380	NALS		

© Navtech - kflld4iap00

# VOR RWY 27R

# Hollywood INTL FORT LAUDERDALE

Miami APP		Fort Lauderdale TWR		GND	ATIS (D)
128.6	091°-270°	133.775	271°-090°	119.3	135.0
4000ft and above				121.4	
118.1	271°-090° below 4000ft		120.2	121.7	



ACFT	VOR	VOR <b>b</b>	Circling <b>a</b>	<b>a</b> AUTH REQ, otherwise 1010 (1000) / 3sm. <b>b</b> Non CDFA.	LDA 2559x46 8394x150ft P 3° (71)
C	680 (675) 1½sm	680 (675) 1¾sm	690 (675) 2sm		MALSR
D	680 (675) 1½sm		710 (700) 2½sm		

Change: Minima.

AMD 12A

© Navtech - kflld5iaip00

50 - 5

WEF 18 NOV 10

50 - 6 | 06 OCT 10

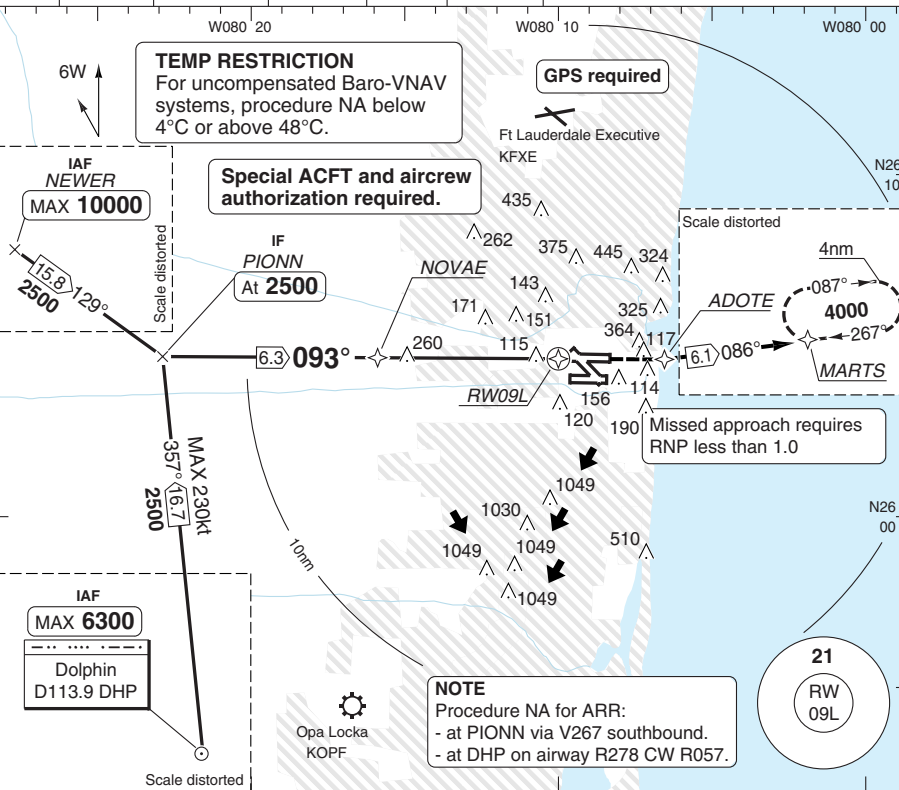
USA (FL) - KFLL / FLL

# RNAV (RNP) Y RWY 09L

# Hollywood INTL FORT LAUDERDALE

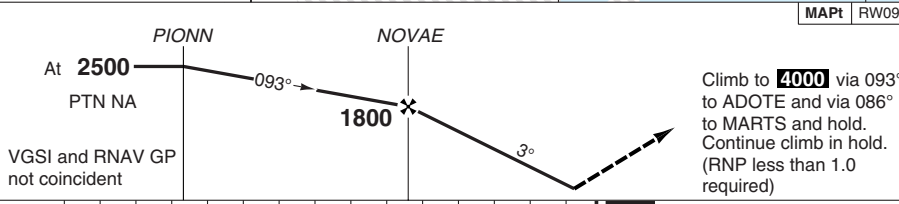
Miami APP		Fort Lauderdale TWR		GND	ATIS (D)
128.6	091°-270°	133.775	271°-090°	4000ft and above	119.3
118.1	271°-090°	below 4000ft			120.2
121.4					121.7
				135.0	

RNAV	FAT	093°	TDZ Elev	7	AD Elev	9	TL ATC	TA	1800
------	-----	------	----------	---	---------	---	--------	----	------



50 - 9

ORGC



nm	15	14	13	12	11	10	9	8	7	6	5	4	3	2	1	0	TCH 48
----	----	----	----	----	----	----	---	---	---	---	---	---	---	---	---	---	--------

ACFT	RNP 0.11	RNP 0.30
C	350 (339) 4000ft	480 (471) 6000ft
D		

Note: Circling NA

LDA 2567x46  
8423x150ft  
P 3°R (68)



© Navtech - kfl106iaip00

Change: New spec.

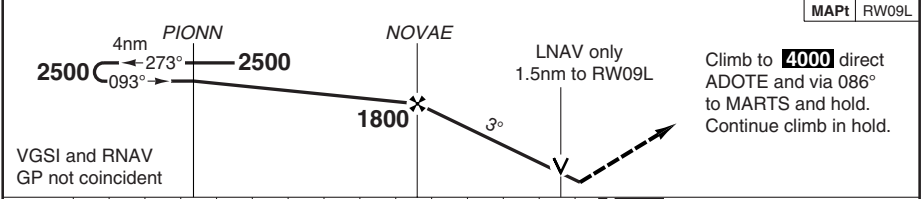
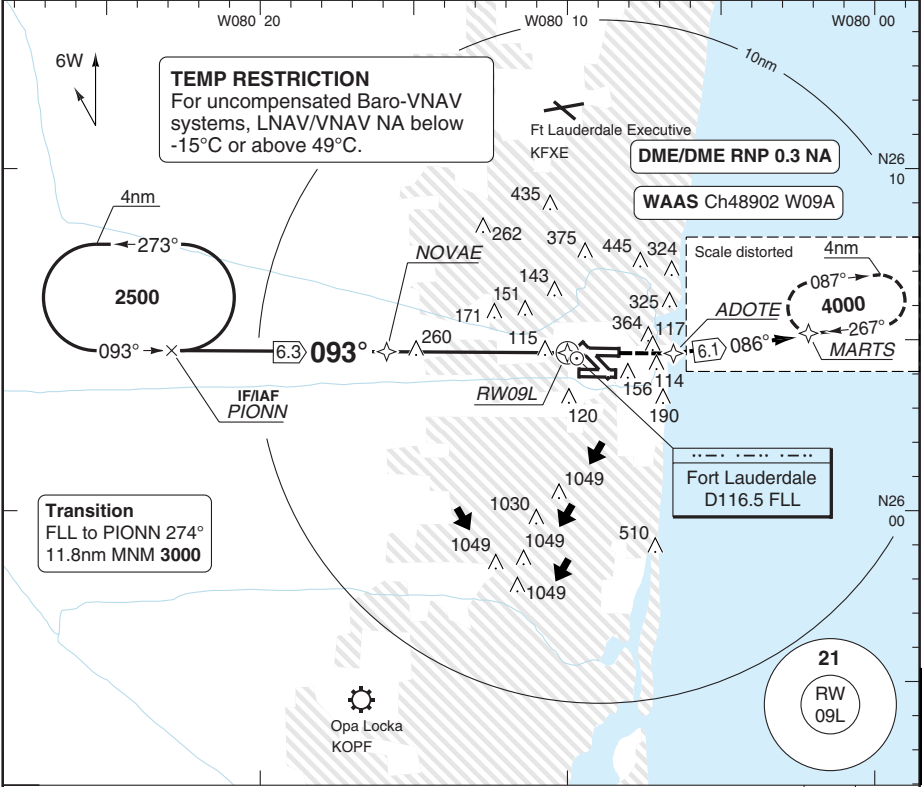
**THIS CHART IS A PART OF NAVIGRAPH NDAC AND IS INTENDED FOR FLIGHT SIMULATION USE ONLY**

# RNAV (GPS) Z RWY 09L

# Hollywood INTL FORT LAUDERDALE

Miami APP		Fort Lauderdale TWR		GND	ATIS (D)
128.6	091°-270°	133.775	271°-090°	4000ft and above	119.3
118.1	271°-090°	below 4000ft			120.2
121.4					121.7
135.0					

RNAV	FAT 093°	TDZ Elev 7	AD Elev 9	TL ATC	TA 18000
------	----------	------------	-----------	--------	----------



nm	15	14	13	12	11	10	9	8	7	6	5	4	3	2	1	0	TCH 48
ACFT	LPV		LNAV/VNAV		LNAV		Circling <b>A</b>		THR	3.0° ALT	LDA 2567x46		8423x150ft		P 3°R (68)		MALSR
C	310 (300)		500 (489)		560 (553)		680 (671) 2sm		7.6	2500	7		2320		MALSR		
D	4000ft		6000ft		6000ft		710 (700) 2½sm		6	2000	5		1680				
									4	1350	3		1030				
									2	710	1.6		560				
GS	80	100	120	140	160	<b>A</b> AUTH REQ. otherwise 1010 (1000) / 3sm.											
ROD 3.0°	440	540	650	760	870												

Change: FLL freq, minima.

© Navtech - kflld7iaip00

AMD 2

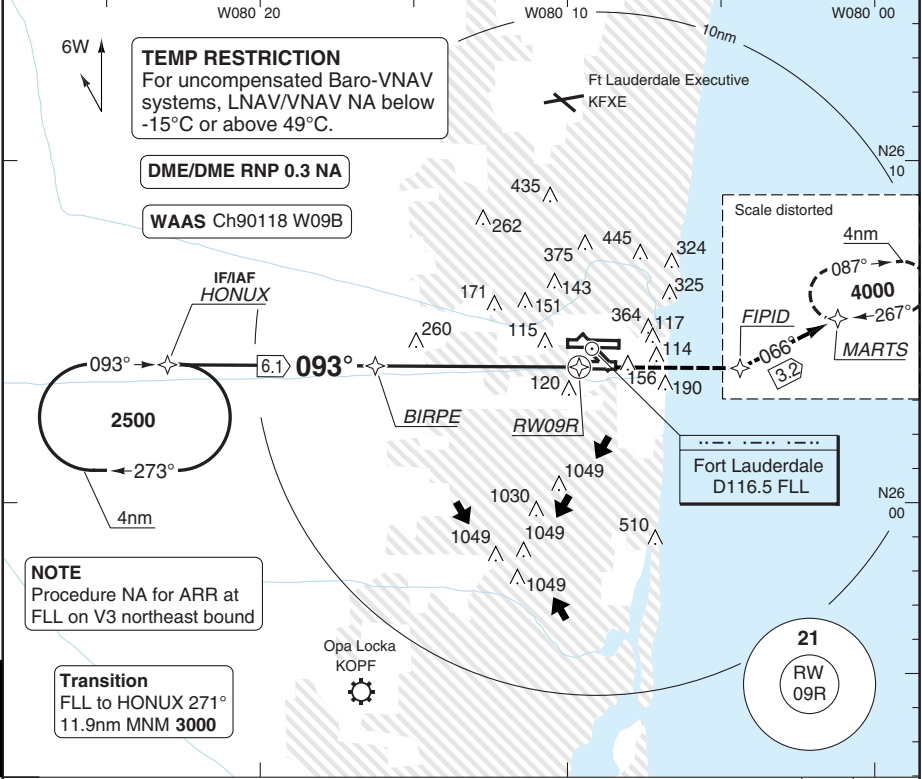
50 - 7

# RNAV (GPS) Y RWY 09R

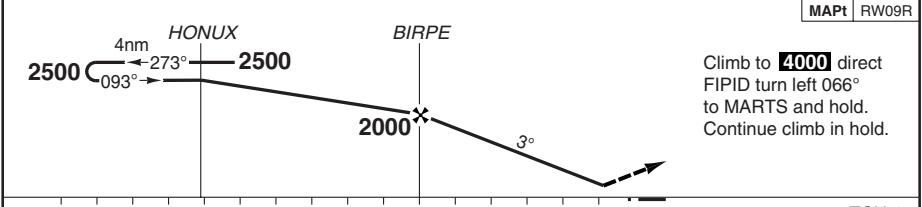
# Hollywood INTL FORT LAUDERDALE

Miami APP		Fort Lauderdale TWR		GND	ATIS (D)	
128.6	091°-270°	133.775	271°-090° 4000ft and above	119.3	121.4	135.0
118.1	271°-090° below 4000ft			120.2	121.7	

RNAV	FAT 093°	TDZ Elev 6	AD Elev 9	TL ATC	TA 18000
------	----------	------------	-----------	--------	----------



50 - 8



nm							TCH 45		
ACFT	LPV	LNAV/VNAV	LNAV	Circling <sup>a</sup>			THR	3.1° ALT	LDA 1511x46 4956x150ft P 3° (45)
C	270 (261) 1sm	410 (402) 1½sm	580 (574) 1½sm	680 (671) 2sm		09R	7.5	2500	
D				710 (700) 2½sm		7	2330		
			580 (574) 1½sm			6	2010		
						5	1680		
						4	1360		
						3	1030		
						2	710		
						1.6	580		

Change: FLL freq, minima.

© Navtech - kflld8aiip00

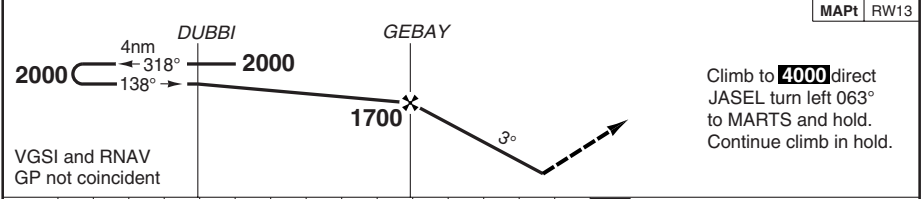
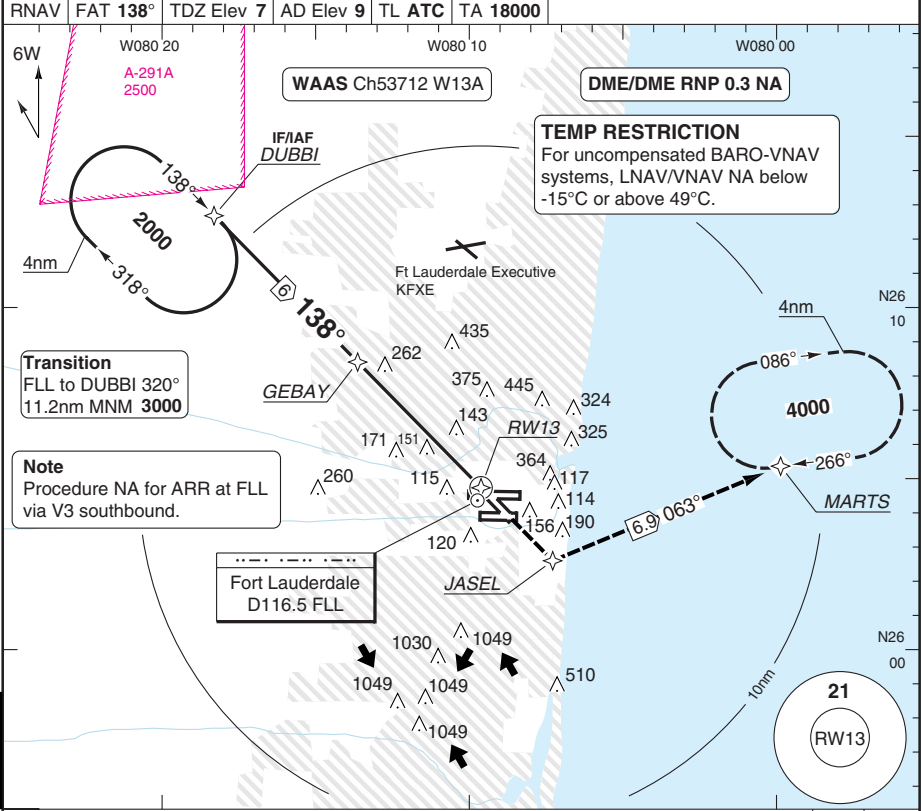
<sup>a</sup> AUTH REQ, otherwise 1010 (1000) / 3sm.



# RNAV (GPS) RWY 13

# Hollywood INTL FORT LAUDERDALE

Miami APP		Fort Lauderdale TWR		GND	ATIS (D)
128.6	091°-270°	133.775	271°-090°	4000ft and above	119.3
118.1	271°-090°	below 4000ft			120.2
					121.4
					135.0



nm					TCH 55				
ACFT	LPV	LNAV/VNAV	LNAV	Circling <sup>a</sup>	THR	3.0° ALT	LDA 2112x46 6930x150ft P 3° (75)		
C	290 (283) 1sm	500 (489) 1¾sm	500 (493) 1¾sm	680 (671) 2sm	13	2000	 G 	NALS	
D			500 (493) 1½sm	710 (700) 2½sm	6	1670			
					5	1350			
					4	1030			
					3	710			
					2	500			
					1.4	500			
GS	80	100	120	140	160	<sup>a</sup> AUTH REQ, otherwise 1010 (1000) / 3sm.			
ROD 3.0°	440	540	650	760	870				

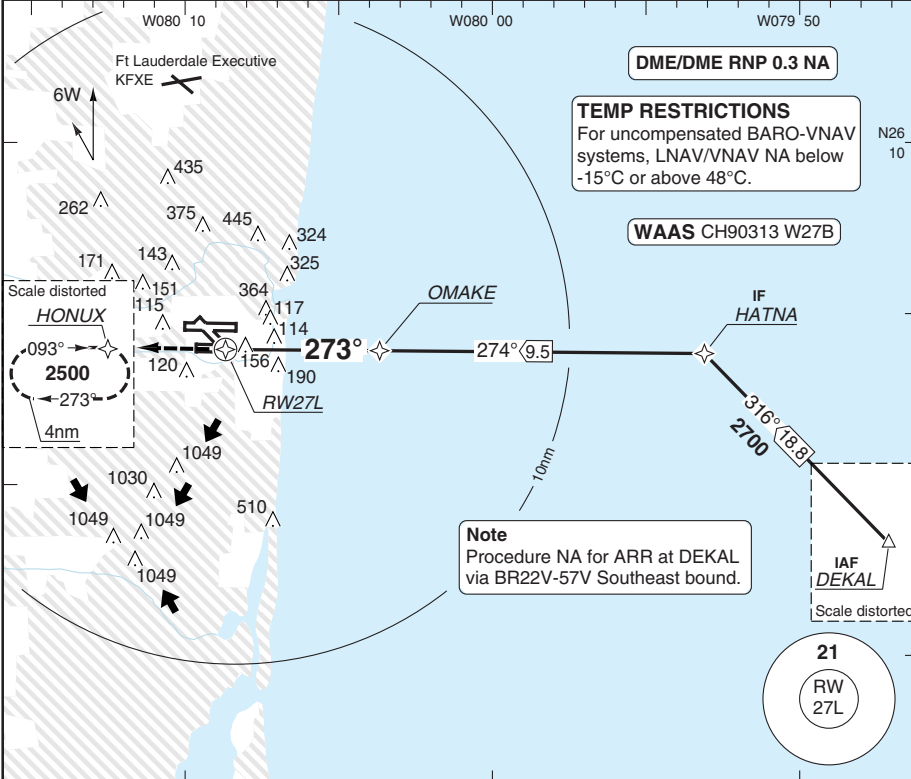
Change: FLL freq, minima.

# RNAV (GPS) RWY 27L

# Hollywood INTL FORT LAUDERDALE

Miami APP		Fort Lauderdale TWR		GND	ATIS (D)
128.6	091°-270°	133.775	271°-090°	4000ft and above	119.3
118.1	271°-090°	below 4000ft			120.2
121.4					121.7
				135.0	

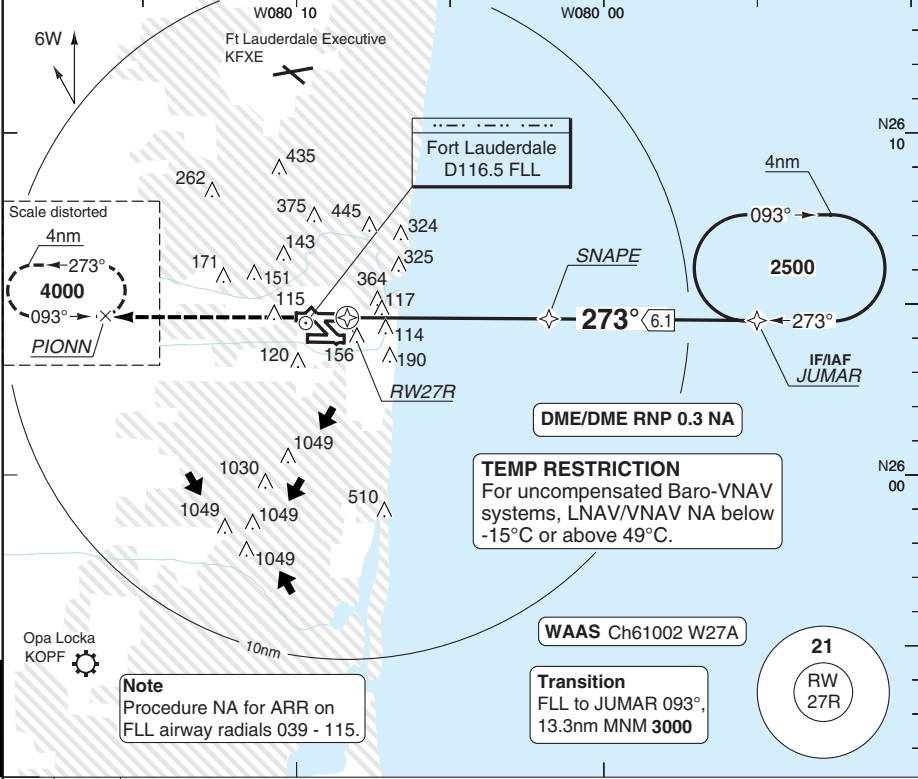
RNAV	FAT 273°	TDZ Elev 6	AD Elev 9	TL ATC	TA 18000
------	----------	------------	-----------	--------	----------



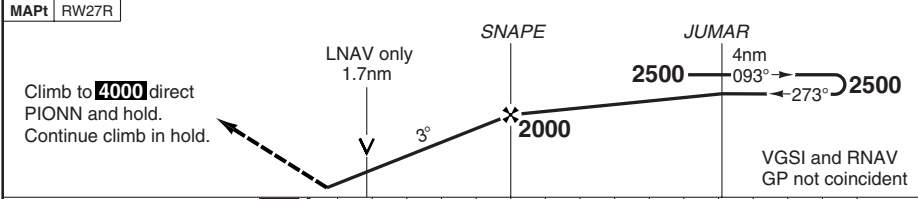
# RNAV (GPS) Y RWY 27R Hollywood INTL FORT LAUDERDALE

Miami APP		Fort Lauderdale TWR		GND	ATIS (D)
128.6	091°-270° 133.775 271°-090° 4000ft and above	119.3		121.4	135.0
118.1	271°-090° below 4000ft	120.2		121.7	

RNAV	FAT 273°	TDZ Elev 7	AD Elev 9	TL ATC	TA 18000
------	----------	------------	-----------	--------	----------



50 - 12



TCH 49	0	1	2	3	4	5	6	7	8	9	10	11	12	13	14	15	16	nm
--------	---	---	---	---	---	---	---	---	---	---	----	----	----	----	----	----	----	----

ACFT	LPV	LNAV/VNAV	LNAV	Circling <sup>a</sup>	THR 27R	3.1° ALT	LDA 2559x46 8394x150ft P 3° (71)
C	310 (300) 4000ft	710 (697) 2sm	620 (613) 1½sm	680 (671) 2sm	7.5	2500	
D			620 (613) 1½sm	710 (700) 2½sm	6	2330	
					5	1680	
					4	1360	
					3	1030	
					1.7	620	

GS	80	100	120	140	160	<sup>a</sup> AUTH REQ.
ROD 3.1°	440	550	650	760	870	otherwise 1010 (1000) / 3sm.

© Navtech - kfl12aip00

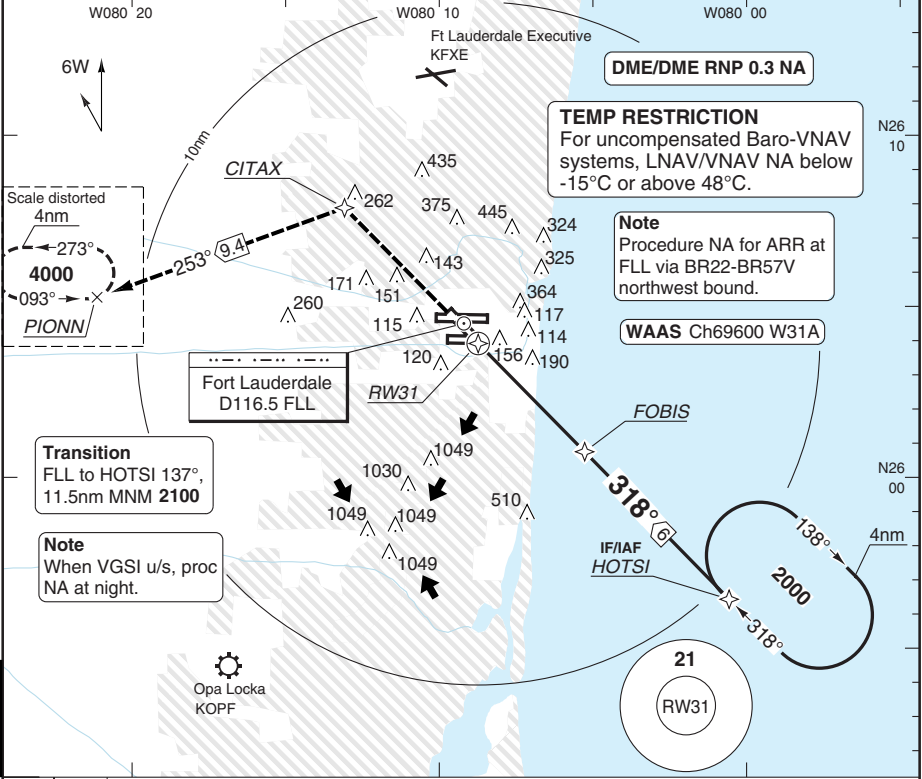


# RNAV (GPS) RWY 31

## Hollywood INTL FORT LAUDERDALE

Miami APP		Fort Lauderdale TWR		GND	ATIS (D)
128.6	091°-270° 133.775 271°-090° 4000ft and above	119.3	121.4	121.7	135.0
118.1	271°-090° below 4000ft	120.2			

RNAV	FAT 318°	TDZ Elev 9	AD Elev 9	TL ATC	TA 18000
------	----------	------------	-----------	--------	----------



Change: FLL freq, minima.

50 - 14

AMD 2

© Navtech - kfl14aip00

## JAR-OPS Minima

## Hollywood INTL FORT LAUDERDALE

The following Minima is for public transport aircraft and is based on FAA criteria and conforms to JAR-OPS1 regulations.

STRAIGHT-IN APPROACH		C				D			
Rwy	Procedure	DA/ MDA QNH Ft	HAT QFE Ft	RVR / Vis Ft/SM	RVR / Vis No ALS Ft/SM	DA/ MDA QNH Ft	HAT QFE Ft	RVR / Vis Ft/SM	RVR / Vis No ALS Ft/SM
09L	ILS	260	250	4000	4000	260	250	4000	4000
09L	LOC/DME with PAKEE fix	380	380	4000	6000	380	380	4500	1 1/4
09L	LOC	560	560	5000	1 1/2	560	560	6000	1 3/4
09L	RNAV Y (RNP 0.11)(1)	350	340	4000	6000	350	340	4500	1 1/4
09L	RNAV Y (RNP 0.30)(1)	480	480	6000	1 3/4	480	480	6000	1 3/4
09L	RNAV Z (LPV)	310	300	4000	5600	310	300	4000	5600
09L	RNAV Z (L/VNAV)	500	490	6000	1 3/4	500	490	6000	1 3/4
09L	RNAV Z (LNAV)	560	560	5000	1 1/2	560	560	6000	1 3/4
09R	LOC	580	580	1 1/2	N/A	580	580	1 3/4	N/A
09R	RNAV Z (RNP 0.11)(1)	330	320	1 1/4	N/A	330	320	1 1/4	N/A
09R	RNAV Z (RNP 0.30)(1)	430	420	1 1/2	N/A	430	420	1 1/2	N/A
09R	RNAV Y (LPV)	270	270	1	N/A	270	270	1	N/A
09R	RNAV Y (L/VNAV)	410	410	1 1/2	N/A	410	410	1 1/2	N/A
09R	RNAV Y (LNAV)	580	580	1 1/2	N/A	580	580	1 3/4	N/A
13	LOC/DME	380	380	1 1/4	N/A	380	380	1 1/4	N/A
13	RNAV (LPV)	290	290	1	N/A	290	290	1	N/A
13	RNAV (L/VNAV)	500	490	1 3/4	N/A	500	490	1 3/4	N/A
13	RNAV (LNAV)	500	500	1 1/4	N/A	500	500	1 1/2	N/A
27L	RNAV (LPV)	330	320	1 1/4	N/A	330	320	1 1/4	N/A
27L	RNAV (L/VNAV)	640	630	2 1/4	N/A	640	630	2 1/4	N/A
27L	RNAV (LNAV)	500	500	1 1/4	N/A	500	500	1 1/2	N/A
27R	ILS	260	250	4000	4000	260	250	4000	4000
27R	LOC	420	420	4000	1 1/4	420	420	4500	1 1/4
27R	VOR	690	680	1 1/2	1 7/8	690	680	1 1/2	1 7/8
27R	RNAV Z (RNP 0.11)(1)	310	300	3300	6000	310	300	4500	1 1/4
27R	RNAV Z (RNP 0.15)(1)	410	400	5000	1 1/2	410	400	5000	1 1/2
27R	RNAV Z (RNP 0.30)(1)	620	620	1 3/4	2 1/4	620	620	1 3/4	2 1/4
27R	RNAV Y (LPV)	310	300	4000	5600	310	300	4000	5600
27R	RNAV Y (L/VNAV)	710	700	2	2 1/2	710	700	2	2 1/2
27R	RNAV Y (LNAV)	620	620	6000	1 3/4	620	620	1 1/2	2
31	RNAV (LPV)	270	270	1	N/A	270	270	1	N/A
31	RNAV (L/VNAV)	510	500	1 3/4	N/A	510	500	1 3/4	N/A
31	RNAV (LNAV)	500	500	1 1/4	N/A	500	500	1 1/2	N/A

Notes:

(1) Special aircrew and aircraft authorisation required.

## JAR-OPS Minima

## Hollywood INTL FORT LAUDERDALE

The following Minima is for public transport aircraft and is based on FAA criteria and conforms to JAR-OPS1 regulations.

CIRCLING		C			D		
Rwy	Procedure	MDA QNH Ft	HAA QFE Ft	Vis Ft/SM	MDA QNH Ft	HAA QFE Ft	Vis Ft/SM
All procedures (1)		680	680	2	710	700	2 1/2

Notes:

(1) RNAV (RNP) Y, Z Procs N/A.

TAKE-OFF		C		D	
Lower than Standard	Facilities	RVR (Ft)	Vis (SM)	RVR (Ft)	Vis (SM)
All	REDL(H) or RCLL or RCLM (1)	1600	1/4	1600	1/4
Standard		RVR (Ft)	Vis (SM)	RVR (Ft)	Vis (SM)
All	3 and 4 engines	2400	1/2	2400	1/2
	1 and 2 engines	5000	1	5000	1

Notes:

(1) TDZ RVR controlling, if not substitute Mid point RVR. Vis 1/4sm permitted when adequate Vis. ref. available.

ALTERNATE		C		D	
Rwy	Procedure	Ceil (Ft)	Vis (SM)	Ceil (Ft)	Vis (SM)
09L	ILS	-	-	700	2 1/4
09L	LOC	-	-	800	2 1/4
27R	ILS	700	2	700	2 1/4
27R	LOC	-	-	800	2 1/4
09R, 13	LOC/DME, LOC	-	-	800	2 1/4
27R	VOR	-	-	800	2 1/4
13, 27L, 31	RNAV (GPS)	-	-	800	2 1/4
09R, 27R	RNAV (GPS) Y	-	-	800	2 1/4
09L	RNAV (GPS) Z	-	-	800	2 1/4
27R	RNAV (RNP) Z	800	2 1/4	800	2 1/4
Others	Std: Precision Approach	600	2	600	2
Others	Std: Non-Prec. Approach	800	2	800	2

Notes: