

## Airport information:

Country: United States of America

City: EVANSVILLE RGNL

Coordinates: N 38° 02.4', W 087° 31.9'

Elevation: 418

Customs:

Fuel: 100LL, Jet A

RFF: ARFF B

hours: H24.

## Runways:

Runway 04

Takeoff length: 2445, Landing length: 2049

Runway 09

Takeoff length: 1067, Landing length: 907

Runway 18

Takeoff length: 1678, Landing length: 1678

Runway 22

Takeoff length: 2445, Landing length: 2445

Runway 27

Takeoff length: 1067, Landing length: 1004

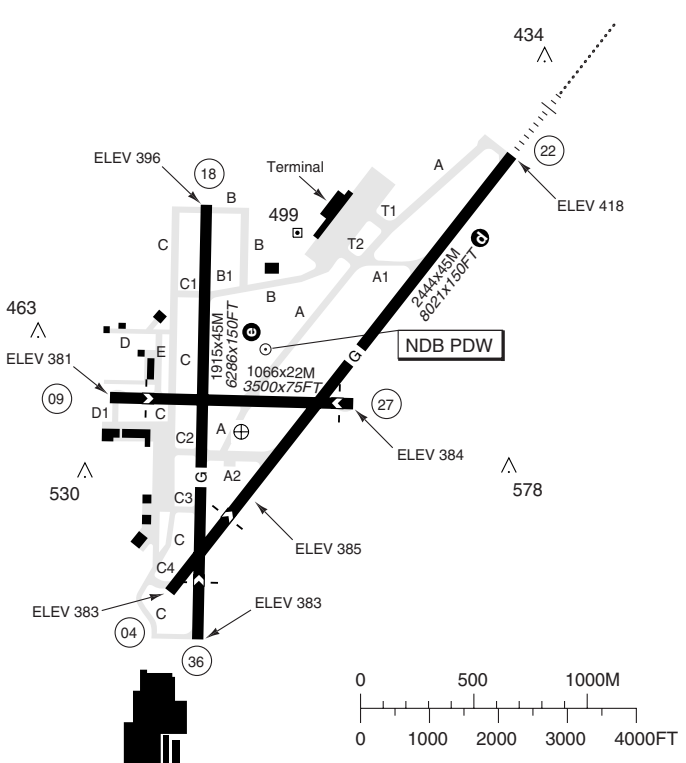
Runway 36

Takeoff length: 1916, Landing length: 1678

E V A N S V I L L E R E G I O N A L I N U S A

| RWY | QFU | APL  | THL | RWL | SLOPE |
|-----|-----|------|-----|-----|-------|
| 04  | 040 | - a  | H   | H   | +0.4  |
| 22  | 220 | ML-I | H   | H   | -0.4  |
| 18  | 183 | - b  | M   | M   | -0.2  |
| 36  | 003 | - c  | M   | M   | +0.2  |

- a REIL, AVASIS 3.00L
  - b REIL, PAPI 3.66R
  - c PAPI 3.00L
  - d Avbl length RWY 04 LDG 2048M/6721FT
  - e Avbl length RWY 18 TKOF and LDG 1677M/5505FT
- RWY 36 LDG 1677M/5505FT



|      |                   |   |       |
|------|-------------------|---|-------|
| TKOF | RWY               | 04/22, 18                                 | 36    |
|      | CLG/RVR or VIS FT | 2 ENG: 0/5000 or 1 3-4 ENG: 0/2400 or 1/2 | 300/1 |

**WARNING**  
Watch out for birds.

RWY 04 and 36 ends are closely aligned.

**SPEED**  
MAX IAS 250KT or MNM safe speed if greater below 10000.

**RWY RESTRICTION**  
RWY 09/27 and 18/36 restricted to ACFT less than 22600kg.

**TWY RESTRICTION**  
TWY C, H and E restricted to ACFT less than 22600kg.

**TAXI**  
Be alert to RWY crossing CLR. Readback of all RWY holding instructions is required.

RFF: Index B. Index C O/R.

**DEP**  
Verify correct RWY and compass HDG prior to DEP.  
ARCAL: 118.700 Type K (RWY 22) (See LEGENDS)

**MNM Climb Gradient:**  
RWY 18, 22: 3.4% (205 FT/NM) to 1300 FT, otherwise 700/1

**Authorized operators:**  
RWY 04/22: 0/1600 or 1/4  
For conditions see USA RAR.

| Circling |               |
|----------|---------------|
| C        | 1420/3 (1002) |
| D        | 1420/3 (1002) |

© European Aeronautical Group - kev001basq0



TERPS

Evansville  
 ATIS 120.200  
 APP/DEP 126.400 041°-219° 12-05  
 127.350 220°-040° 12-05  
 128.300 (Indianapolis Center) 05-12

EVV - KEVV

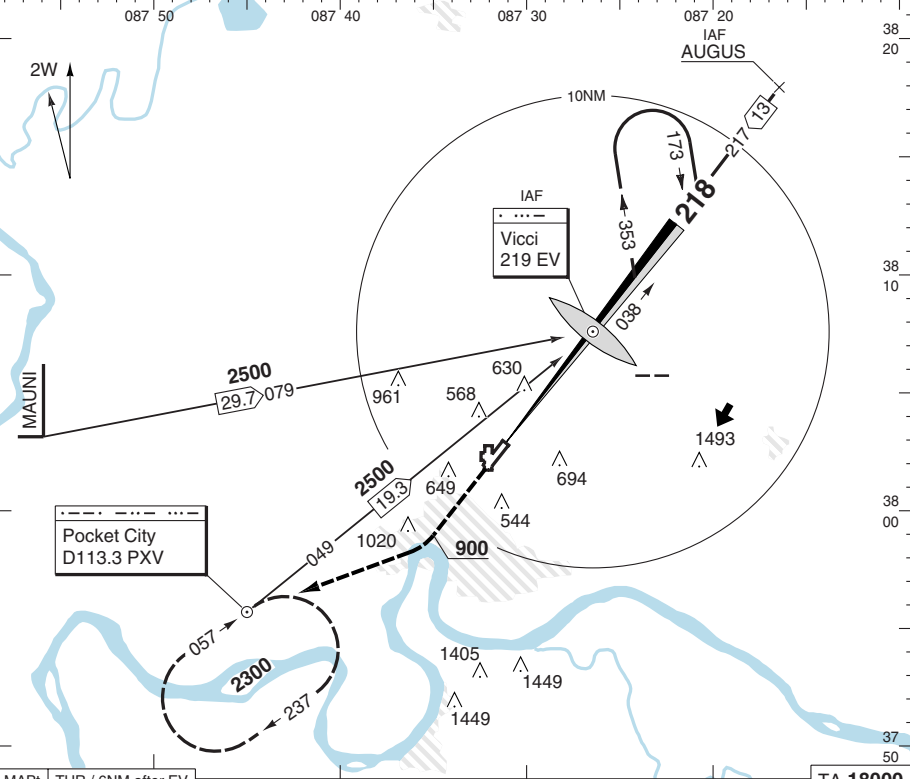
2 10 JAN 08

ILS - 22

E  
V  
A  
N  
S  
V  
I  
L  
L  
E  
  
R  
E  
G  
I  
O  
N  
A  
L  
  
U  
S  
A

ILS 109.9 IEVV ... 218° GP 3.00 TCH 51

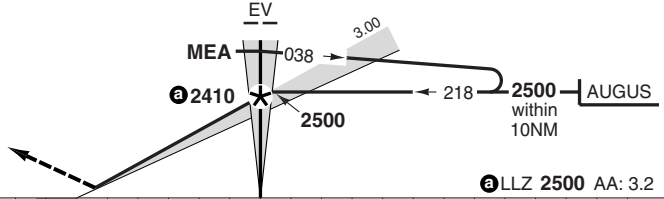
LDG 2444x45M/8021x150FT/0.4



MAPt THR / 6NM after EV

TA 18000

Climb on 218° to 900,  
 turn right to D113.3 PXV  
 climbing to 2300 and  
 hold.

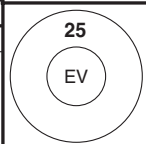


a LLZ 2500 AA: 3.2

NM 9 8 7 6 5 4 3 2 1 0 1 2 3 4 5 6 7 8 9 10 11 12 13 14 15 16 17 18 NM

LLZ: FAF-MAPt/ROD 90KT 4:00/510 100KT 3:35/570 120KT 3:00/680 140KT 2:34/800 160KT 2:15/910

| STATE   | ILS       | LLZ       |       |
|---------|-----------|-----------|-------|
| ACFT    | C D       | C         | D     |
| MIN     | 620 (200) | 880 (462) |       |
| RVR/VIS | 2400      | 4000      | 5300  |
| APL U/S | 4000      | 1 1/4     | 1 1/2 |



THR ELEV 418 FT/AD ELEV 418 FT Change: New

THIS CHART IS A PART OF NAVIGRAPH NDAC AND IS INTENDED FOR FLIGHT SIMULATION USE ONLY

© European Aeronautical Group - kev02ibasq0 - Y - P

AMD 20B

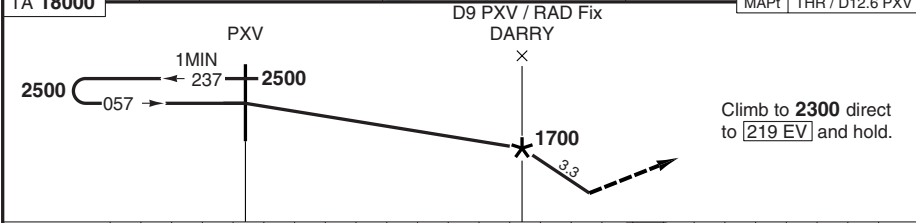
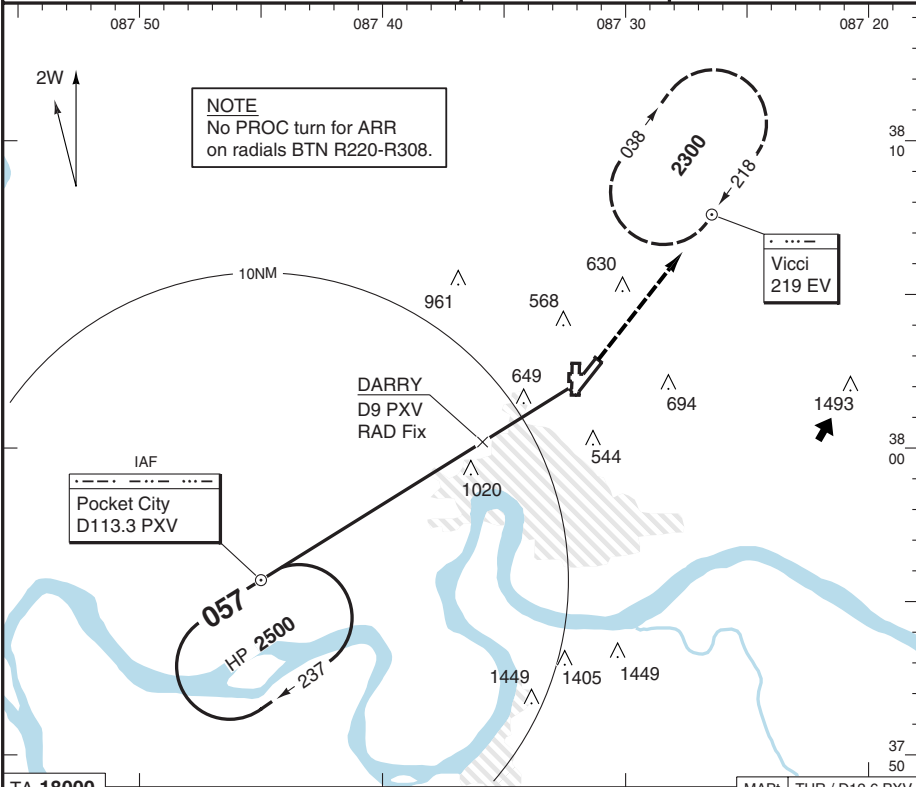
EVANSVILLE REGIONAL IN USA

|  |          |           |   |
|--|----------|-----------|---|
| Evansville<br>ATIS 120.200<br>APP/DEP 126.400 041°-219° 12-05<br>127.350 220°-040° 12-05<br>128.300 (Indianapolis Center) 05-12<br>TWR 118.700 12-05 | <b>3</b> | 10 JAN 08 | <b>VOR - 04</b><br>GND 121.900<br>CLR 126.600<br>TCH 52 |
|--|----------|-----------|---|

TERPS

AMD 50C

© European Aeronautical Group - kev003i@basqo



|    |    |    |    |    |    |    |    |    |   |   |   |   |   |   |   |   |   |   |   |   |   |   |   |   |   |   |    |
|----|----|----|----|----|----|----|----|----|---|---|---|---|---|---|---|---|---|---|---|---|---|---|---|---|---|---|----|
| NM | 17 | 16 | 15 | 14 | 13 | 12 | 11 | 10 | 9 | 8 | 7 | 6 | 5 | 4 | 3 | 2 | 1 | 0 | 1 | 2 | 3 | 4 | 5 | 6 | 7 | 8 | NM |
|----|----|----|----|----|----|----|----|----|---|---|---|---|---|---|---|---|---|---|---|---|---|---|---|---|---|---|----|

|                       |               |                |                |                |                |
|-----------------------|---------------|----------------|----------------|----------------|----------------|
| VOR+DME: FAF-MAPt/ROD | 90KT 2:24/530 | 100KT 2:10/590 | 120KT 1:48/710 | 140KT 1:32/830 | 160KT 1:21/940 |
|-----------------------|---------------|----------------|----------------|----------------|----------------|

| PXV 3.3° ALT | STATE   | VOR       |    |  |  |
|--------------|---------|-----------|----|--|--|
| D6.7 - 2500  | ACFT    | C         | D  |  |  |
| D8 - 2050    | MIN     | 900 (515) |    |  |  |
| D9 - 1700    | VIS     | 1½        | 1¾ |  |  |
| D10 - 1350   | APL U/S | 1½        | 1¾ |  |  |
| D11 - 1000   |         |           |    |  |  |

**NOTE**  
ADF and DME or RAD required.

TDZ ELEV 385 FT/AD ELEV 418 FT Change: New

THIS CHART IS A PART OF NAVIGRAPH NDAC AND IS INTENDED FOR FLIGHT SIMULATION USE ONLY

TERPS

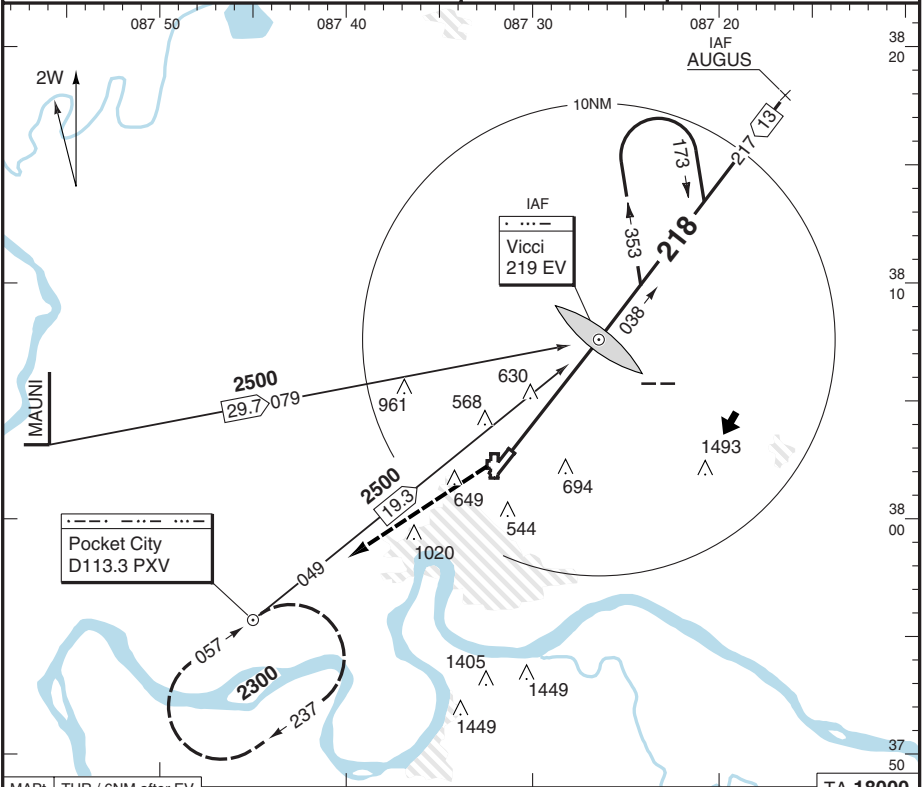
Evansville  
 ATIS 120.200  
 APP/DEP 126.400 041°-219° 12-05  
 127.350 220°-040° 12-05  
 128.300 (Indianapolis Center) 05-12  
 TWR 118.700 12-05

EVV - KEV 4 10 JAN 08

NDB - 22

GND 121.900  
 CLR 126.600  
 TCH 50  
 LDG 2444x45M/8021x150FT/-0.4

E  
V  
A  
N  
S  
V  
I  
L  
L  
E  
  
R  
E  
G  
I  
O  
N  
A  
L  
  
U  
S  
A

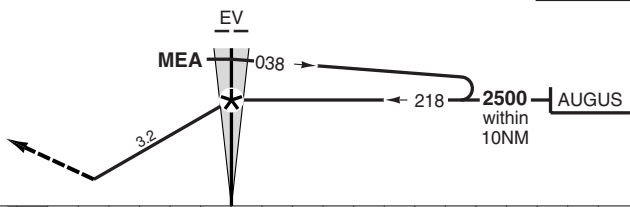


AMD 12B

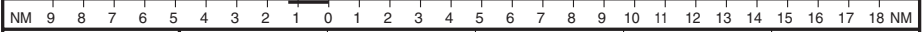
MAPt THR / 6NM after EV

TA 18000

Climb to **2300** direct to **D113.3 PXV** and hold.

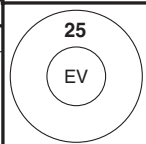


© European Aeronautical Group - kev04ibasq0 - Y - P



|                   |               |                |                |                |                |
|-------------------|---------------|----------------|----------------|----------------|----------------|
| NDB: FAF-MAPt/ROD | 90KT 4:00/510 | 100KT 3:35/570 | 120KT 3:00/680 | 140KT 2:34/800 | 160KT 2:15/910 |
|-------------------|---------------|----------------|----------------|----------------|----------------|

| STATE   | NDB       |    |
|---------|-----------|----|
| ACFT    | C         | D  |
| MIN     | 940 (522) |    |
| RVR/VIS | 5000      | 1½ |
| APL U/S | 1½        | 1¾ |



Reverse side blank

THR ELEV 418 FT/AD ELEV 418 FT Change: New

**THIS CHART IS A PART OF NAVIGRAPH NDAC AND IS INTENDED FOR FLIGHT SIMULATION USE ONLY**