

Airport information:

Country: United States of America

City: CASPER

Coordinates: N 42° 54.5', W 106° 27.9'

Elevation: 5350

Customs: Nil

Fuel: 100LL, Jet

RFF: Index B

hours: H24.

Runways:

Runway 03

Takeoff length: 3098, Landing length: 3098

Runway 08

Takeoff length: 2645, Landing length: 2645

Runway 21

Takeoff length: 3098, Landing length: 3098

Runway 26

Takeoff length: 2645, Landing length: 2645

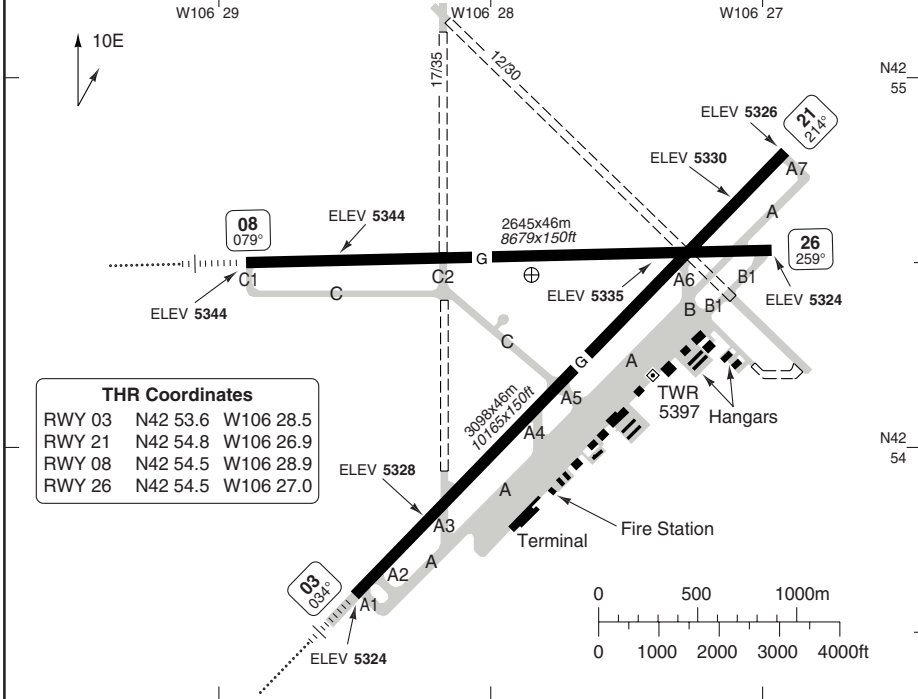
AERODROME

Natrona County INTL CASPER

10 - 1

Casper CLR GND 121.9	TWR 118.3	DEP 120.65 119.0	Denver Center DEP 135.6	Casper ATIS 126.15
--------------------------------	---------------------	--------------------------------------	-----------------------------------	------------------------------

AD Elev 5350	ARP: N42 54.5 W106 27.9	RFF: Index B	AD HR: H24
---------------------	-------------------------	--------------	------------



RWY	Slope	TORA m/ft	LDA m/ft	ALS	REDL	Additional
03	0	3098 / 10165	3098 / 10165	M-I	H	V 3°R (53)
21	0	3098 / 10165	3098 / 10165	-	H	V 3° (56), REIL
08	-0.2	2645 / 8679	2645 / 8679	M-I	H	V 3°R (104)
26	+0.2	2645 / 8679	2645 / 8679	-	H	V 3°R (43), REIL

ARCAL: 118.3 type K (7 clicks within 5 secs)

TERPS		TAKE OFF MINIMA	
RWY	Facilities	RVR/VIS	
		2 ENG	3-4 ENG
All	Adequate vis ref	1/4sm	
	HREDL or RCLL or RCL	1600ft / 1/4sm	
	Standard	5000ft / 1sm	2400ft / 1/2sm

GENERAL INFORMATION

- TAXI**
Be alert to RWY crossing CLR. Readback of all RWY holding instructions is required.
- SPEED**
MAX 250kt below 10000ft.

© Navtech - kcpr01laorg0

Reverse side blank

Additional Landing Minima

Natrona County INTL **CASPER**

ILS RWY 03 Circling

ACFT	Circling a b	Circling a c	Circling a d
STATE C	6220 (870) <i>2½sm</i>	5950 (600) <i>1½sm</i>	6250 (896) <i>2½sm</i>
	6220 (870) <i>2¾sm</i>	6050 (700) <i>2½sm</i>	6250 (896) <i>2¾sm</i>

- a** Authorisation required, otherwise **6350** (1000) *3 sm*
- b** After ILS+DME Proc
- c** After ILS+MAMUE Proc
- d** After LOC+DME Proc

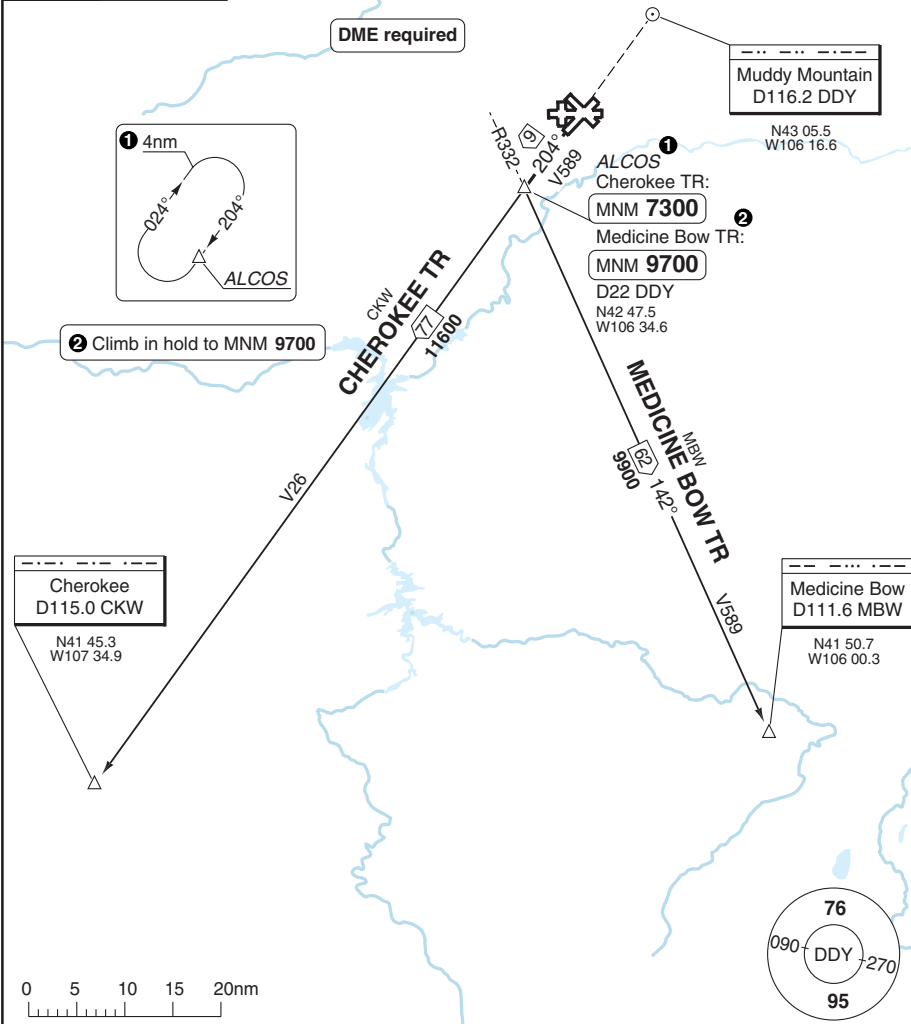
SID ALCOS 3

Natrona County INTL CASPER

Casper CLR GND 121.9	TWR 118.3	DEP 120.65 119.0	Denver Center DEP 135.6	Casper ATIS 126.15
-------------------------	--------------	------------------------	----------------------------	-----------------------

ALCOS 3

TA 18000 | AD Elev 5350



30 - 1

SPEED: MAX 250kt below 10000ft.
MNM CLIMB GRADIENT: 4.4% to 7300.

SID	Routeing	Altitudes
ALCOS 3	Turn left - climb on 204°/R204 DDY - ALCOS - then via transition or assigned route.	ALCOS MNM 7300
Transition	Routeing	Altitudes
CHEROKEE TR	204°/R204 DDY - V26 - CKW.	
MEDICINE BOW TR	Intcp R322 MBW - MBW or climb in holding pattern.	ALCOS MNM 9700

Change: New spec.

THIS CHART IS A PART OF NAVIGRAPH NDAC AND IS INTENDED FOR FLIGHT SIMULATION USE ONLY

SID CASPER 2

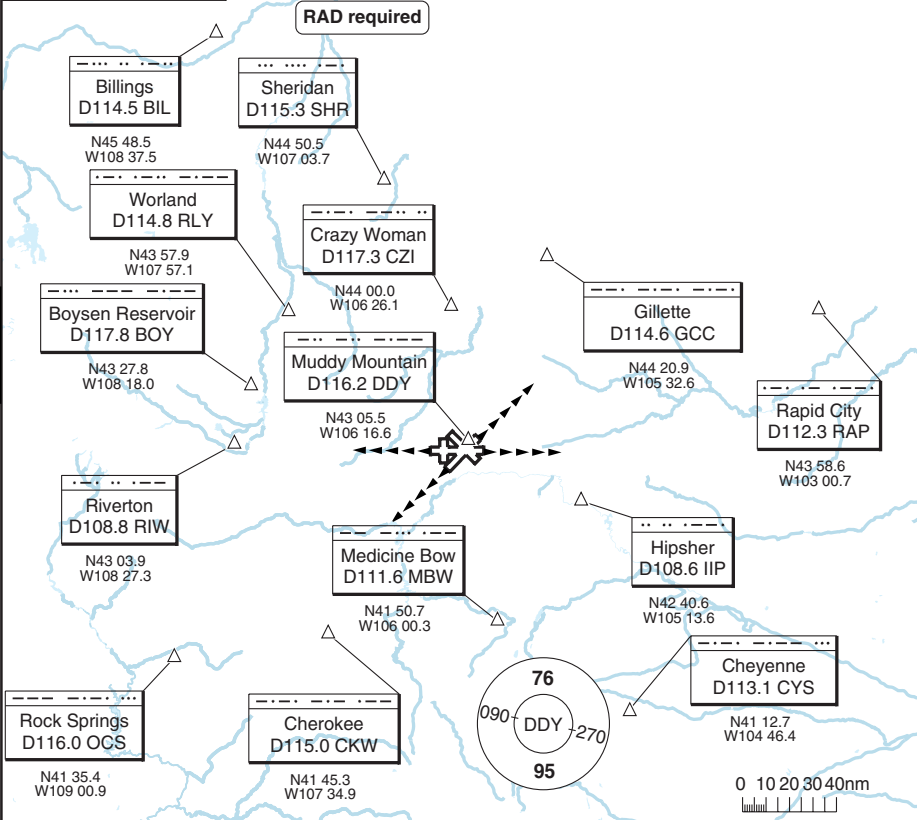
Natrona County INTL CASPER

Casper CLR GND 121.9	TWR 118.3	DEP 120.65 119.0	Denver Center DEP 135.6	Casper ATIS 126.15
--------------------------------	---------------------	--------------------------------------	-----------------------------------	------------------------------

CASPER 2
CPR2

TA 18000 AD Elev 5350

RAD required



NOTE: Expect CLR to filed ALT 10min after DEP.

SPEED: MAX 250kt below 10000ft.

MNM CLIMB GRADIENT: RWY 21: 3.9% to 6700.

ALT RESTRICTION: Maintain **14000** or lower assinged ALT.

SID	RWY	Routing
CASPER 2	03	Climb on HDG BTN sector 212° - 094° from DER as assigned by ATC - expect RAD vectors to filed/assigned route or fix.
	21	Climb on HDG BTN sector 257° - 094° from DER as assigned by ATC - expect RAD vectors to filed/assigned route or fix.
	08	Climb on HDG BTN sector 195° - 032° from DER as assigned by ATC - expect RAD vectors to filed/assigned route or fix.
	26	Climb on HDG BTN sector 190° - 077° from DER as assigned by ATC - expect RAD vectors to filed/assigned route or fix.

COM FAIL: If no transmissions are received within 1min after DEP, maintain assigned HDG until **7000**, then climb to filed ALT via DDY, then via assigned route.
RWY 03 and RWY 08: Turn left to DDY.
RWY 21 and RWY 26: Turn right to DDY.

30 - 2

© Navitech - kcpr02daorg

Change: Spec update

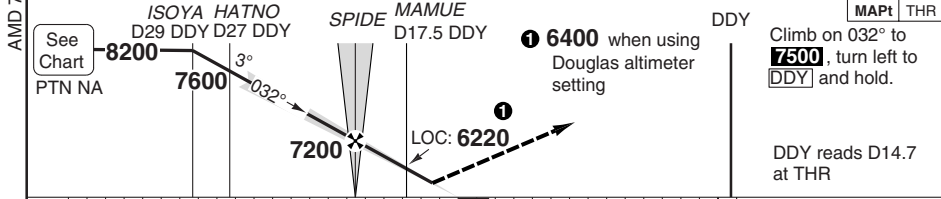
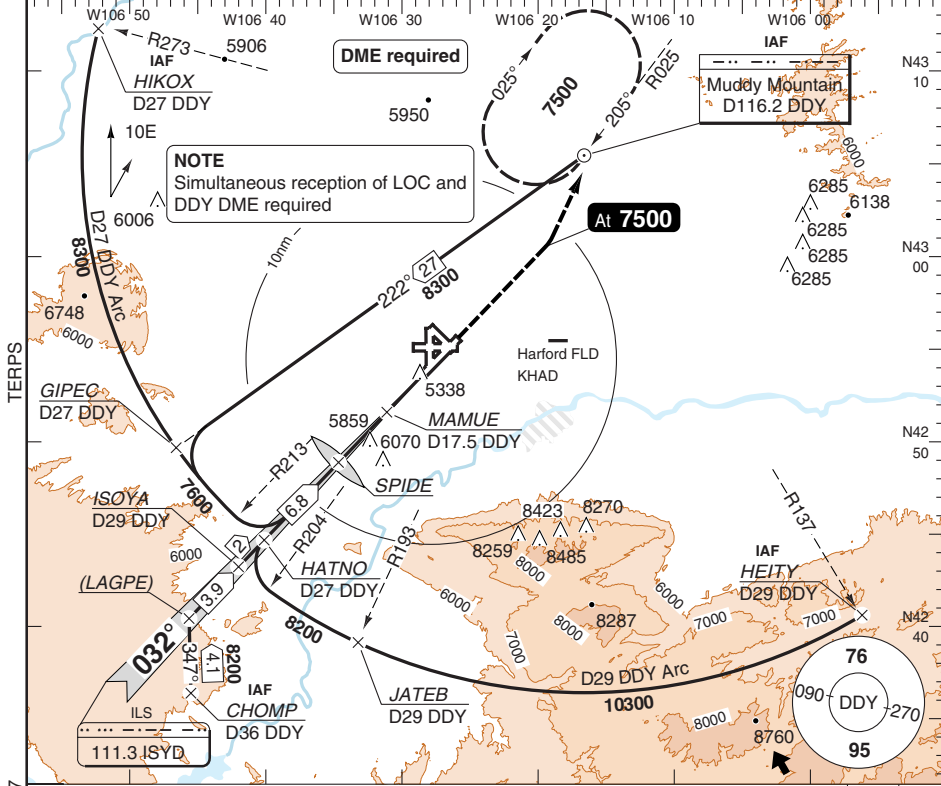
THIS CHART IS A PART OF NAVIGRAPH NDAC AND IS INTENDED FOR FLIGHT SIMULATION USE ONLY

ILS RWY 03

Natrona County INTL CASPER

Casper APP 120.65 119.0	Denver Center APP 135.6	Casper TWR 118.3	GND 121.9	ATIS 126.15
-------------------------------	----------------------------	---------------------	--------------	----------------

ILS 111.3 ISYD	FAT 032°	THR Elev 5324	AD Elev 5350	TL ATC	TA 18000
----------------	----------	---------------	--------------	--------	----------



nm 21 20 19 18 17 16 15 14 13 12 11 10 9 8 7 6 5 4 3 2 1 0 1 2 3 4 5 6 7 8 9 10 11 12 13 14 15						TCH 50		
ACFT	ILS+DME	LOC+MAMUE	LOC+DME	<p>Note: For Circling see 51-1</p> <p>a RVR 1800ft: FD or AP or HUD to DA required</p> <p>b When local Altimeter setting not received, use Douglas Altimeter setting and: Increase DA to 5700ft and all MDAs 180ft.</p> <p>Increase ILS VIS $\frac{1}{4}$sm, LOC+DME VIS $\frac{1}{2}$sm, and circling VIS $\frac{1}{2}$sm.</p>		DME DDY	3.1° ALT	LDA 3098x46 10165x150ft V 3°R (53)
C	5530 (200) 2400ft	5740 (416) 4000ft	6220 (896) 2sm			23.4	8200	<p>MALS R</p>
D	a b	b	b			21	7420	
						20	7100	
						19	6770	
						18	6450	
						17	6120	
						16	5790	
GS	80	100	120	140	160	15.8	5740	
ROD 3.1°	430	540	650	760	870			

© Navtech - kcpr01iiaip00

Change: ALT, TCH, THR Elev, Minima, MAMUE

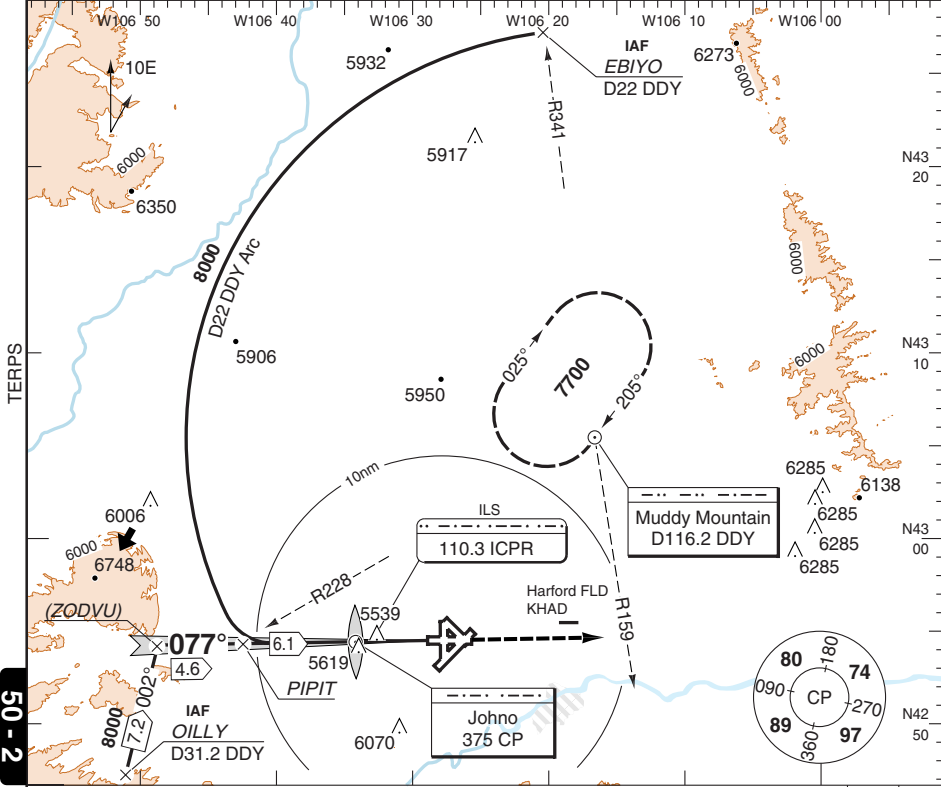
THIS CHART IS A PART OF NAVIGRAPH NDAC AND IS INTENDED FOR FLIGHT SIMULATION USE ONLY

ILS RWY 08

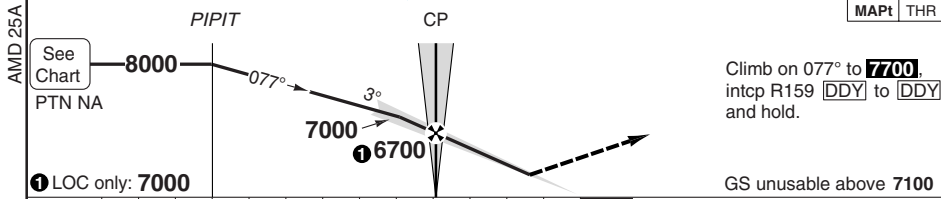
Natrona County INTL CASPER

Casper APP 120.65 119.0	Denver Center APP 135.6	Casper TWR 118.3	GND 121.9	ATIS 126.15
---	-----------------------------------	----------------------------	---------------------	-----------------------

ILS 110.3 ICPR	FAT 077°	TDZ Elev 5344	AD Elev 5350	TL ATC	TA 18000
----------------	----------	---------------	--------------	--------	----------



50 - 2



nm	13	12	11	10	9	8	7	6	5	4	3	2	1	0	TCH 102
----	----	----	----	----	---	---	---	---	---	---	---	---	---	---	---------

ACFT	ILS	LOC	Circling a
C	5650 (300) 4000ft	5800 (456) 4500ft	5950 (600) 1½sm

GS	80	100	120	140	160
ROD 3.9°	550	690	830	970	1100
FAF +20s	6820	6780	6730	6680	6640
+40s	6640	6550	6460	6360	6270
+60s	6460	6320	6180	6040	5910
FAF-5800	2:11	1:44	1:27	1:14	1:05
FAF-MAPt	2:55	2:20	1:57	1:40	1:28

LDA 2645x46
8679x150ft
V 3°R (104)

MALSR

Note: CAT D NA

a Authorisation required, otherwise 6350 (1000) 3sm

© Navtech - kcp02iaip00

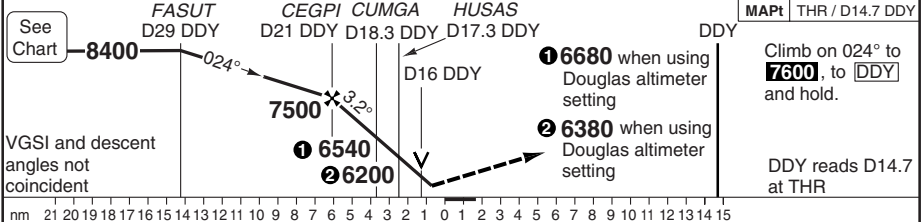
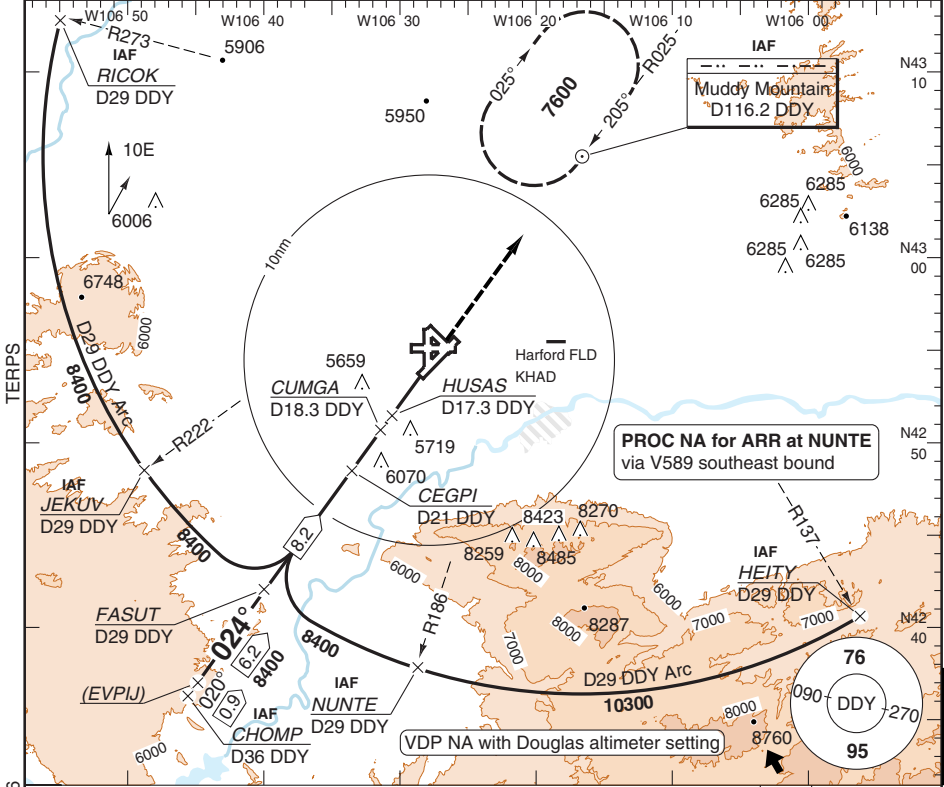
Change: New spec.

VOR RWY 03 VOR/DME

Natrona County INTL CASPER

Casper APP 120.65 119.0	Denver Center APP 135.6	Casper TWR 118.3	GND 121.9	ATIS 126.15
-------------------------------	----------------------------	---------------------	--------------	----------------

VOR/DME 116.2 DDY	FAT 024°	THR Elev 5324	AD Elev 5350	TL ATC	TA 18000
-------------------	----------	---------------	--------------	--------	----------



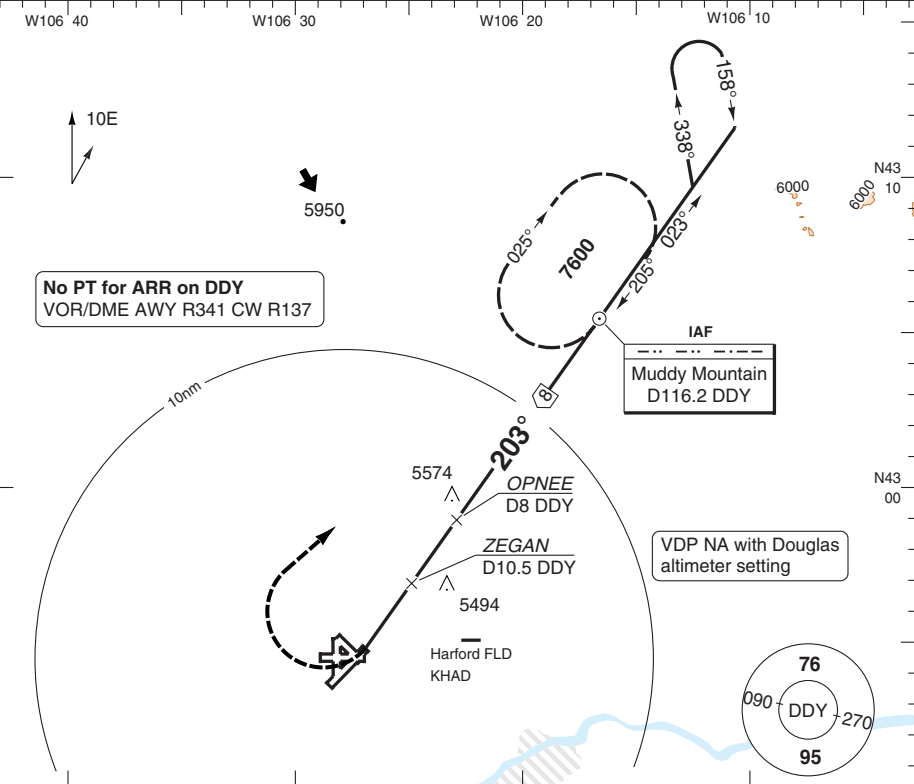
ACFT	VOR+DME	Circling C	When Local Altimeter setting not received, use Douglas Altimeter setting: Increase all MDAs 180ft and: a Increase VIS 1/2sm b Increase VIS 1/4sm c Authorisation required, otherwise 6350 (1000) 3sm	DME DDY	3.2° ALT	LDA 3098x46 10165x150ft V 3°R (53)
C	5780 (456) 4500ft	5950 (600) 1 1/2sm b 6050 (700) 2 1/2sm b		23.7	8400	
D	a		22	7830		
			21	7490		
			20	7160		
			19	6820		
			18	6480		
			17	6150		
			15.9	5780		

VOR RWY 21 VOR/DME

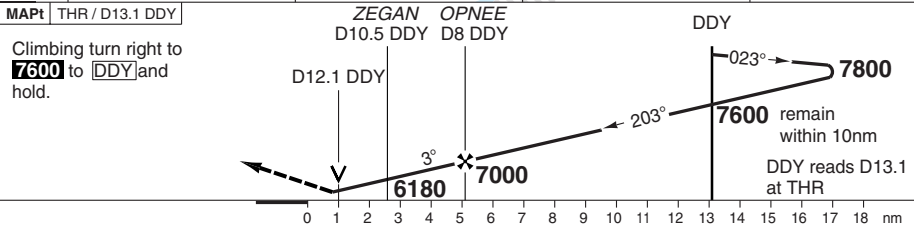
Natrona County INTL CASPER

Casper APP 120.65 119.0	Denver Center APP 135.6	Casper TWR 118.3	GND 121.9	ATIS 126.15
-------------------------------	----------------------------	---------------------	--------------	----------------

VOR/DME 116.2 DDY	FAT 203°	THR Elev 5326	AD Elev 5350	TL ATC	TA 18000
-------------------	----------	---------------	--------------	--------	----------



50 - 4



ACFT	VOR+DME	Circling C	When Local Altimeter setting not received, use Douglas Altimeter setting: Increase all MDAs 180ft and: a Increase VIS $\frac{1}{2}$ sm b Increase VIS $\frac{1}{4}$ sm c Authorisation required, otherwise 6350 (1000) 3sm	DME DDY	3° ALT	LDA 3098x46 10165x150ft V 3° (56)	
C	5680 (354) 1sm a	5950 (600) $\frac{1}{2}$ sm b			5.5	8400	<div style="display: flex; align-items: center; justify-content: center;"> <div style="width: 10px; height: 100px; background-color: black; margin-right: 5px;"></div> G </div>
D	6050 (700) $\frac{2}{2}$ sm b			6	7640		
				7	7320		
				8	7000		
				9	6680		
				10	6370		
				11	6050		
				12.1	5680		
GS	80	100	120	140	160		
ROD 3°	420	530	640	740	850		

© Navtech - kcpr04iapi00

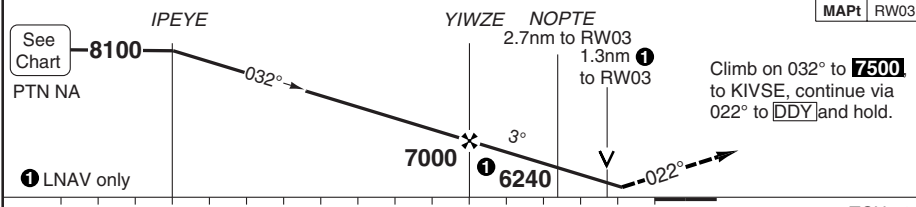
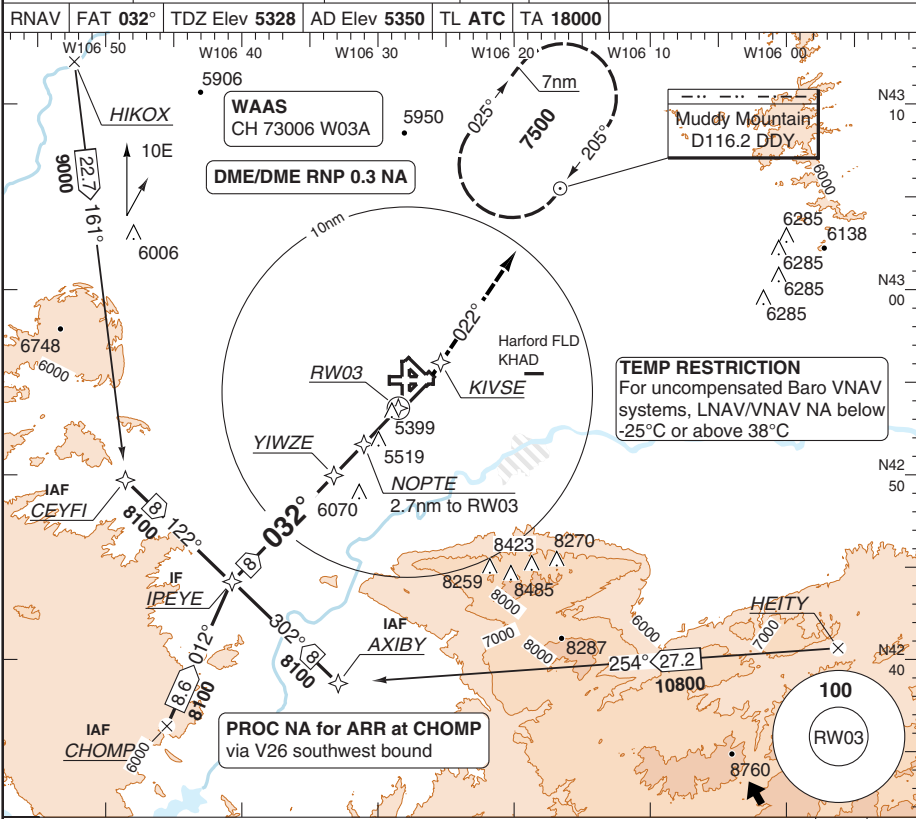
Change: THR Elev, Note, ALT, MISAP, Minima

THIS CHART IS A PART OF NAVIGRAPH NDAC AND IS INTENDED FOR FLIGHT SIMULATION USE ONLY

RNAV (GPS) RWY 03

Natrona County INTL CASPER

Casper APP 120.65 119.0	Denver Center APP 135.6	Casper TWR 118.3	GND 121.9	ATIS 126.15	
RNAV	FAT 032°	TDZ Elev 5328	AD Elev 5350	TL ATC	TA 18000



nm	16	15	14	13	12	11	10	9	8	7	6	5	4	3	2	1	0	TCH 52	
ACFT	LPV	LNAV/VNAV		LNAV		Circling a		THR	3.1° ALT	LDA 3098x46 10165x150ft V 3°R (53)									
C	5650 (315) 2400ft	5700 (363) 4000ft		5780 (452) 4500ft		5950 (600) 1½sm		8.4	8100	MALSR									
D				5780 (452) 5000ft		6050 (700) 2½sm		7	7650										
								6	7330										
								5	7000										
								4	6680										
								3	6360										
								2	6030										
								1.2	5780										
GS	80	100	120	140	160														
ROD 3.1°	440	550	650	760	870														

a Authorisation required, otherwise 6350 (1000) 3sm

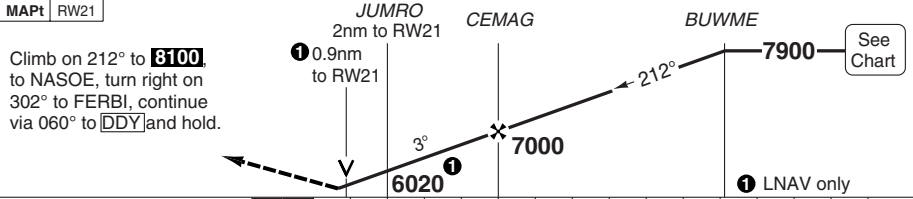
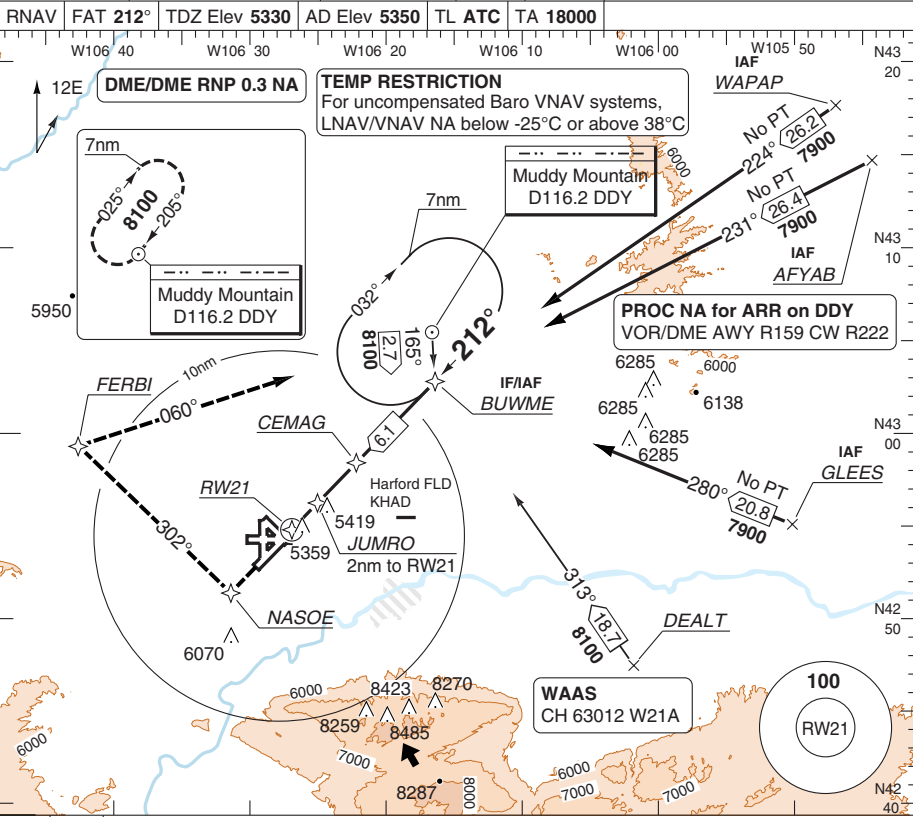
Change: New spec.

THIS CHART IS A PART OF NAVIGRAPH NDAC AND IS INTENDED FOR FLIGHT SIMULATION USE ONLY

RNAV (GPS) RWY 21

Natrona County INTL CASPER

Casper APP 120.65 119.0	Denver Center APP 135.6	Casper TWR 118.3	GND 121.9	ATIS 126.15	
RNAV	FAT 212°	TDZ Elev 5330	AD Elev 5350	TL ATC	TA 18000



TCH 56						0 1 2 3 4 5 6 7 8 9 10 11 12 13 14 15 nm						
ACFT	LPV	LNAV/VNAV	LNAV	Circling ^a		THR	3.1° ALT	LDA 3098x46 10165x150ft V 3° (56)				
C	5580 (250) ¾sm	5630 (299) 1sm	5680 (350) 1sm	5950 (600) 1½sm		7.8	7900	G	NALS			
D				5680 (350) 1¼sm	6050 (700) 2½sm	6	7330					
					5	7000						
					4	6680						
					3	6360						
					2	6030						
GS	80	100	120	140	160	0.9	5680					
ROD 3.1°	440	550	650	760	870							

^a Authorisation required, otherwise 6350 (1000) 3sm

Change: New spec.

THIS CHART IS A PART OF NAVIGRAPH NDAC AND IS INTENDED FOR FLIGHT SIMULATION USE ONLY

