

Airport information:

Country: United States of America

City: COLORADO SPRINGS

Coordinates: N 38° 48.4', W 104° 42.1'

Elevation: 6187

Customs:

Fuel: 100LL, Jet A

RFF: Index C

hours: H24

Runways:

Runway 13

Takeoff length: 2520, Landing length: 2520

Runway 17L

Takeoff length: 4115, Landing length: 4115

Runway 17R

Takeoff length: 3360, Landing length: 3360

Runway 31

Takeoff length: 2520, Landing length: 2412

Runway 35L

Takeoff length: 3360, Landing length: 3360

Runway 35R

Takeoff length: 4115, Landing length: 4115

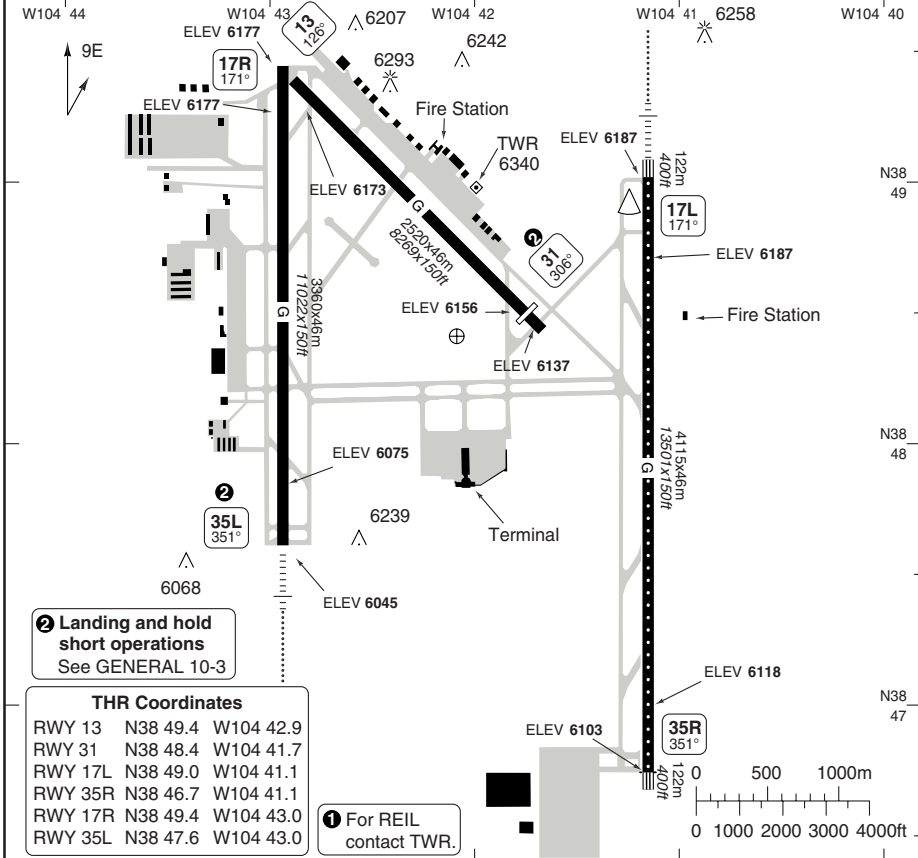
AERODROME

Municipal COLORADO SPRINGS

10 - 1

Springs DLV 134.45	GND 121.7	TWR 119.9 W 133.15 E	DEP 124.0	ATIS 125.0
------------------------------	---------------------	--	---------------------	----------------------

AD Elev 6187	ARP: N38 48.4 W104 42.1	RF: INDEX C	AD HR: H24
---------------------	-------------------------	-------------	------------



RWY	Slope	TORA m/ft	LDA m/ft	ALS	REDL	RCLL	Additional
13	-0.5	2520 / 8269	2520 / 8269	-	M	-	P3° R(65), REIL ①
31	0.5	2520 / 8269	2412 / 7913	-	M	-	P3° (52), REIL ①
17L	-0.6	4115 / 13501	4115 / 13501	M- K	H	Avbl	P3° (54)
35R	0.6	4115 / 13501	4115 / 13501	-	H	Avbl	P3° R(72), REIL
17R	-1.2	3360 / 11022	3360 / 11022	-	H	-	P3° (50), REIL ①
35L	1.2	3360 / 11022	3360 / 11022	M- K	H	-	P3° (73)

TERPS TAKE OFF MINIMA

RWY	Facilities	RVR/VIS	
		2 ENG	3-4 ENG
All a b	HREDL or RCLL or RCL	1600ft / 1/4 sm	
	Adequate Vis Ref	1/4 sm	
	Standard minima	5000ft / 1sm	2400ft / 1/2sm

- a** 31: Standard with MNM Climb of 220ft/nm to **6900**.
- b** 35L: 300 ft / 1/4 sm with MNM Climb of 213ft/nm to **6400**, or standard with MNM climb 200ft/nm when take off must occur no later than 1400ft prior to DER.

Change: RWY designators, TWY B1-B5 re-designated.

THIS CHART IS A PART OF NAVIGRAPH NDAC AND IS INTENDED FOR FLIGHT SIMULATION USE ONLY

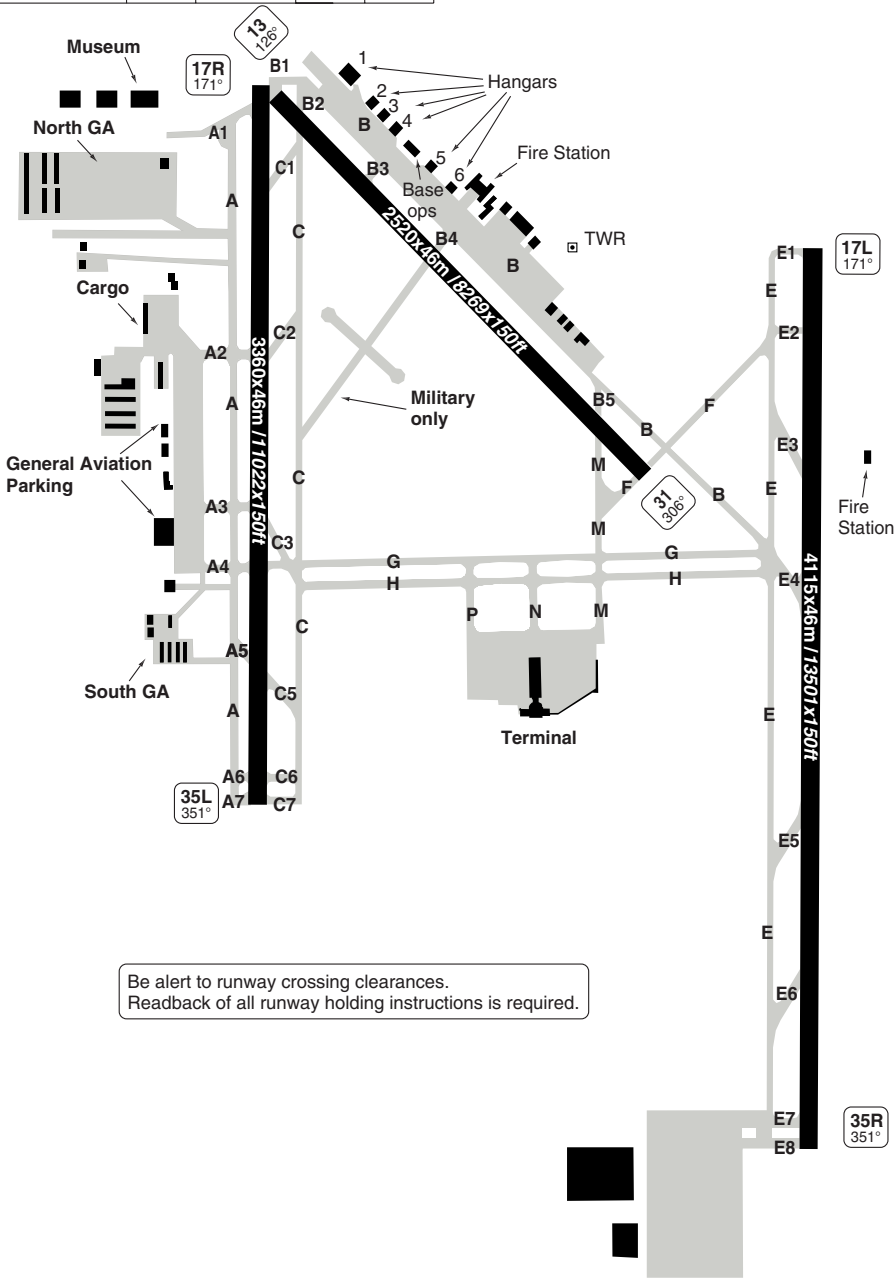
© Navtech - kcos01laorg0

AERODROME OVERVIEW

Municipal COLORADO SPRINGS

10 - 2

Springs DLV	GND	TWR	DEP	ATIS
134.45	121.7	119.9 W 133.15 E	124.0	125.0



Be alert to runway crossing clearances.
Readback of all runway holding instructions is required.

© Navtech - kcos02laorg0

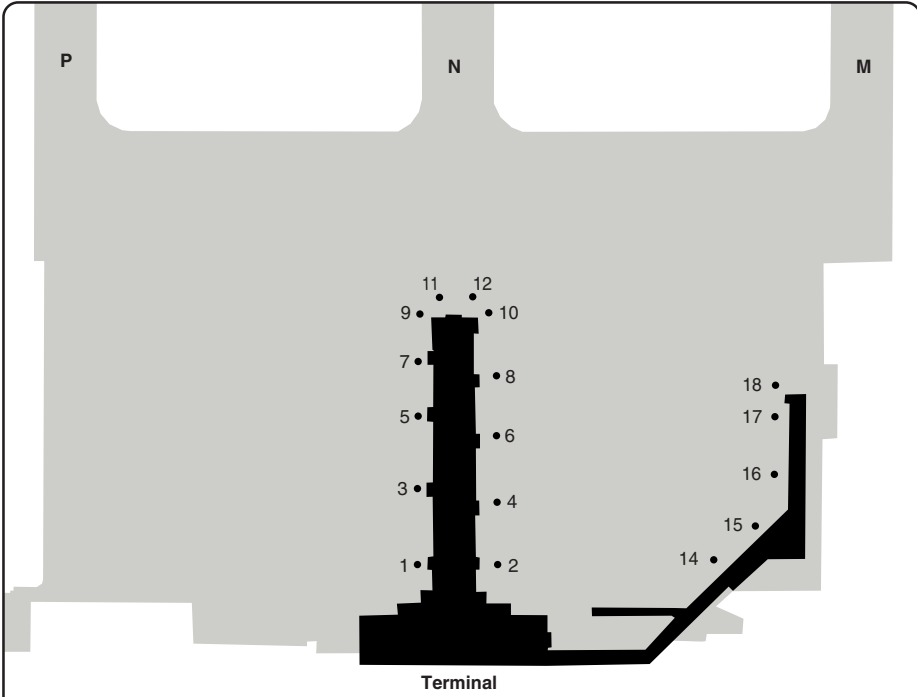
Change: RWY designators, TWY B1-B5 re-designated.

THIS CHART IS A PART OF NAVIGRAPH NDAC AND IS INTENDED FOR FLIGHT SIMULATION USE ONLY

GENERAL

Municipal COLORADO SPRINGS

10 - 3



GENERAL INFORMATION

1. WARNING

- 1.1 Water fowl and migratory bird activity in vicinity of aerodrome.
- 1.2 Intensive USAF student training in vicinity of Colorado Springs and Pueblo Colorado.
- 1.3 Portions of taxiways A, B, E, F, G and M are blocked from view from the TWR by obstructions.
- 1.4 Portions of taxiway C and runway 17R - 35L are blocked from view from TWR when infield MIL OPS area is occupied by C17 or C5.

2. WIND

Low level windshear Alert System (LLWAS) in operation.

3. TAXI

Insufficient taxiway corner fillet pavement for centreline taxiway for aircraft with wingspan greater than 117ft/36m at taxiways A2, A3, A4. These aircraft should use judgemental oversteer at those taxiways.

4. LAND SHORT AND HOLD OPERATIONS

LDG RWY	AVBL DIST TO	RWY INT
31	2271m / 7450ft	17R - 35L
35L	3124m / 10250ft	13 - 31

May be in effect when broadcast on ATIS.

5. OBSTACLE DEPARTURE PROCEDURE

- 5.1 Only for use when no other SID has been assigned.
- 5.2 RWY 13, 17L, 17R Climbing left turn direct BRK...
RWY 31, 35L, 35R Climbing right turn direct BRK...
Then ACFT on BRK R325-R153 climb on course, otherwise climb in BRK hold (left turn, 154° inbound) to cross BRK at MEA/MCA for route of flight.

© Navitech - kcos03gaorg0

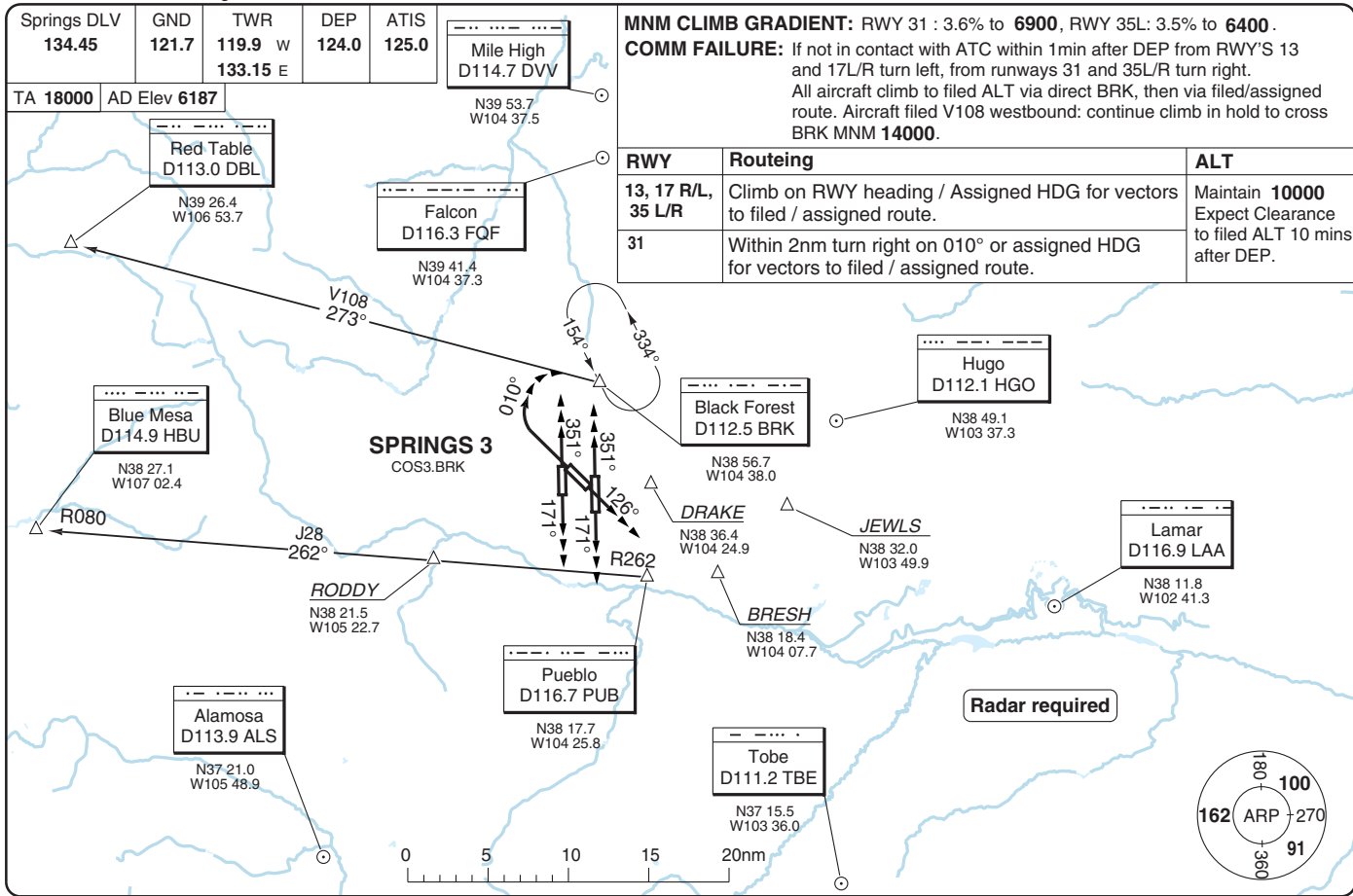
Reverse side blank

Change: Obstacle departure procedure.

THIS CHART IS A PART OF NAVIGRAPH NDAC AND IS INTENDED FOR FLIGHT SIMULATION USE ONLY

THIS CHART IS A PART OF NAVIGRAPH NDAC AND IS INTENDED FOR FLIGHT SIMULATION USE ONLY

Change: VOR's, waypoints added.



SID SPRINGS 3

30 - 1 | 12 JAN 11

Municipal COLORADO SPRINGS

USA (CO) - KCOS / COS

Springs APP	TWR	GND	ATIS
118.5	119.9 W	121.7	125.0
120.6	133.15 E		

TL ATC AD Elev 6187

Blue Mesa
D114.9 HBU

N38 27.1
W107 02.4

HBU.DBRY2
BLUE MESA TR
92 080°
17000

Black Forest
D112.5 BRK

N38 56.7
W104 38.0

DEBERRY 2
FSHR.DBRY2

Expect radar vectors to
FAT at or before PYNON.

FLOOD
D32 PUB
N38 20.4
W105 05.6

21 082°
9000

Pueblo
D116.7 PUB

N38 17.7
W104 28.8

FSHER
R262/D10 PUB
R168/D38 BRK
N38 18.6
W104 38.9

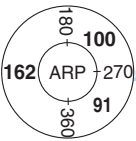
OPSHN
R217/D14 PUB
R168/D48 BRK
N38 08.8
W104 39.1

COMM FAILURE
PROCEED TO BRK

Radar required

TRPEL
R217/D29 PUB
N37 58.8
W104 53.8

15 037°
12000



ALS.DBRY2
ALAMOSA TR
58 036°
17000

Alamosa
D113.9 ALS

N37 21.0
W105 48.9

TBE.DBRY2
TOBE TR
305° 73
9000

Tobe
D111.2 TBE

N37 15.5
W103 36.0

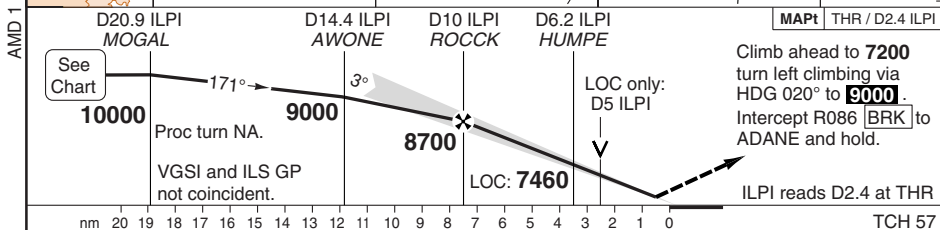
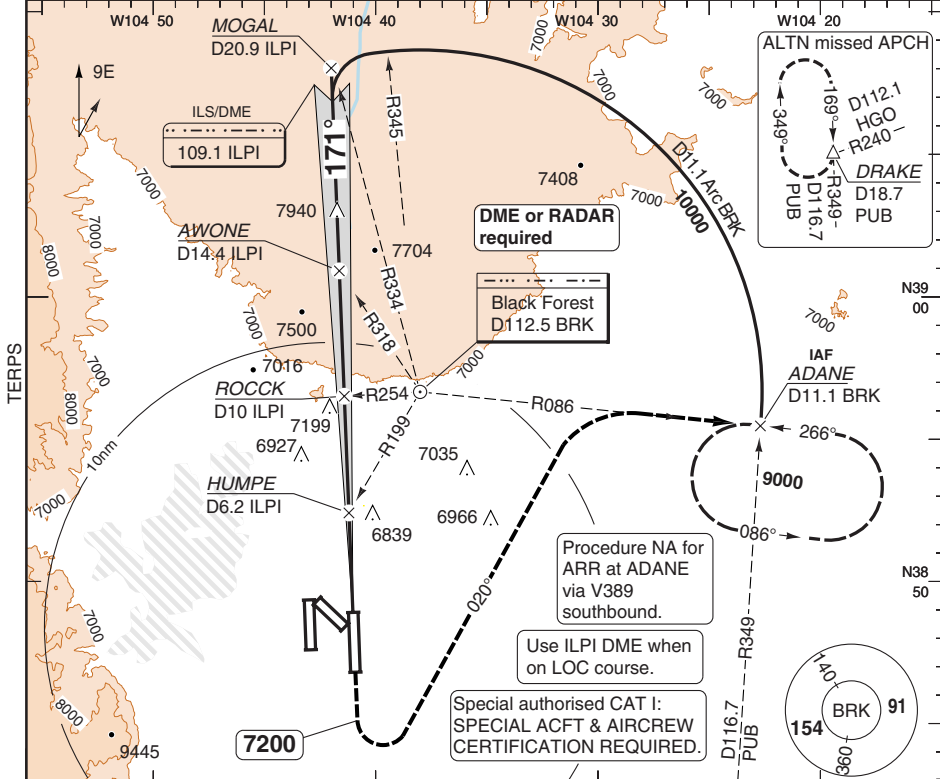
Change: Redesignated ALT's. THIS CHART IS A PART OF NAVIGRAPH NDAC AND IS INTENDED FOR FLIGHT SIMULATION USE ONLY.

ILS RWY 17L

Municipal COLORADO SPRINGS

Springs APP 118.5 120.6	TWR 119.9 W 113.15 E	GND 121.7	DLV 134.45	ATIS 125.0
--------------------------------------	-----------------------------------	---------------------	----------------------	----------------------

ILS/DME 109.1 ILPI	FAT 171°	TDZ Elev 6187	AD Elev 6187	TL ATC	TA 18000
---------------------------	-----------------	----------------------	---------------------	---------------	-----------------



ACFT	ILS a	LOC	Circling b	DME ILPI	3.1° ALT	LDA 4115x46 13501x150ft P 3° (54)	
C	6390 (200) 1800ft	7060 (873) 2sm	7060 (873) 2½ sm	13.9	10000		
D		7060 (873) 2¼ sm	7060 (873) 2¾ sm	12	9380		
				10	8730		
				8	8070		
				7	7750		
				6	7420		
				5	7090		
GS	80	100	120	140	160		
ROD 3.1°	440	550	660	770	880		
FAF-MAPt	5:19	4:15	3:33	3:02	2:40		
						4.2	6820

© Navitech - kcos01iaip00

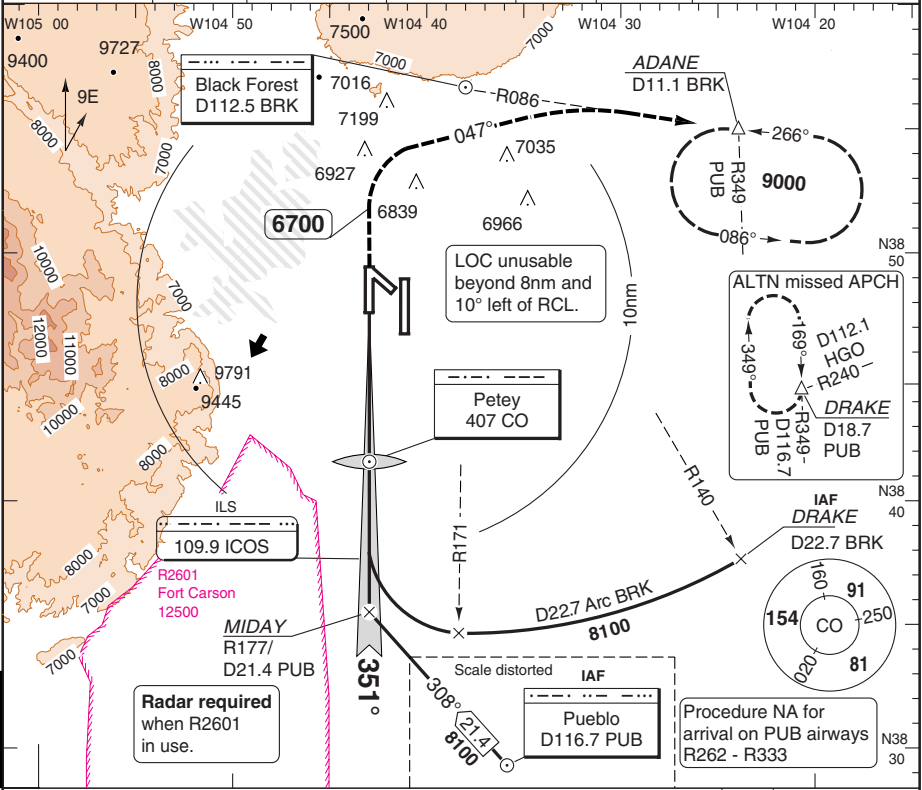
Change: Procedure revised.

THIS CHART IS A PART OF NAVIGRAPH NDAC AND IS INTENDED FOR FLIGHT SIMULATION USE ONLY

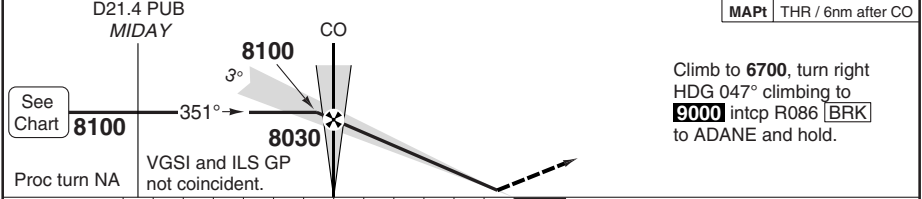
ILS RWY 35L

Municipal COLORADO SPRINGS

Springs APP 118.5 120.6	TWR 119.9 W 133.15 E	GND 121.7	DLV 134.45	ATIS 125.0	
ILS 109.9 ICOS	FAT 351°	TDZ Elev 6075	AD Elev 6187	TL ATC	TA 18000



50 - 2
AMD 37



ACFT	ILS ^a	ILS	LOC	Circling ^b	GS	80	100	120	140	160	LDA 3360x46 11022x150ft P 3° (73)
C	6280 (200) 1800ft	6280 (200) 2400ft	6340 (265) 2400ft	6790 (600) 1½ sm	ROD 3.0°	430	540	640	750	850	
					FAF +20s	7890	7860	7820	7790	7750	
					+40s	7750	7680	7610	7540	7470	
D	6280 (200) 1800ft	6280 (200) 2400ft	6340 (265) 4000ft	6890 (700) 2½ sm	FAF -6340	3:59	3:11	2:40	2:17	1:59	
					FAF-MAPt	4:03	3:14	2:42	2:19	2:01	

- ^a FD or AP or HUD to DA req.
- ^b Authorisation required, otherwise 7190 (1000) 3sm.

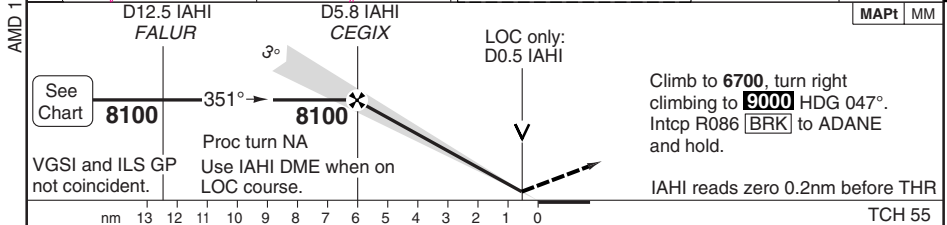
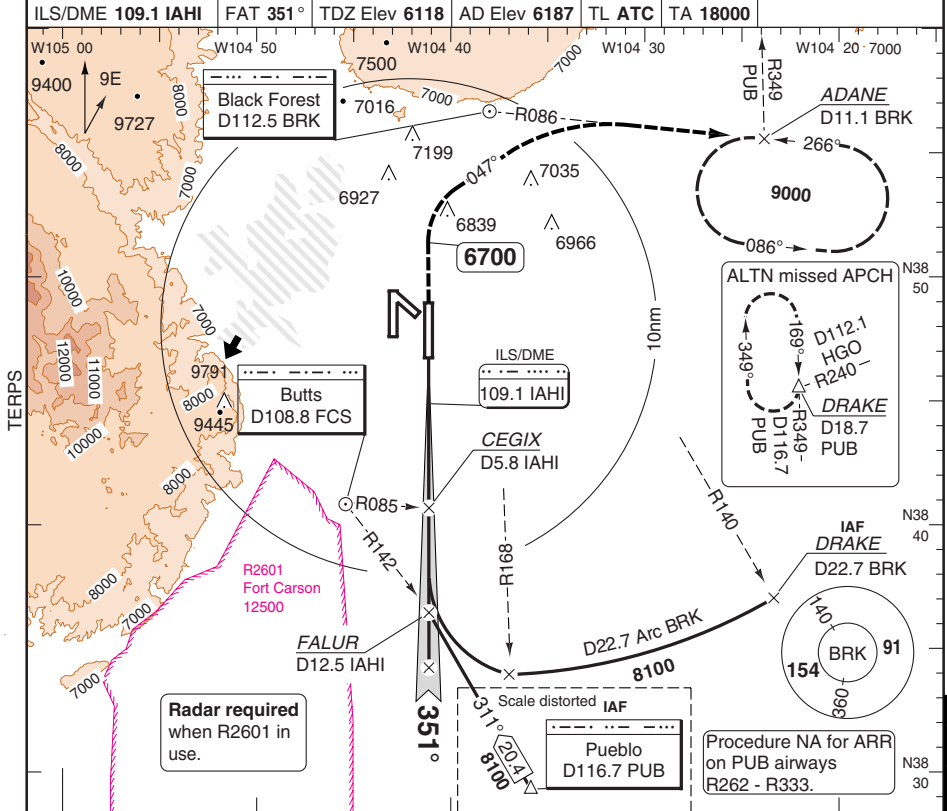
Change: Tracks, missed approach.

THIS CHART IS A PART OF NAVIGRAPH NDAC AND IS INTENDED FOR FLIGHT SIMULATION USE ONLY

ILS RWY 35R

Municipal COLORADO SPRINGS

Springs APP 118.5 120.6	TWR 119.9 W 133.15 E	GND 121.7	DLV 134.45	ATIS 125.0	
ILS/DME 109.1 IAH		FAT 351°	TDZ Elev 6118	AD Elev 6187	TL ATC TA 18000



ACFT	ILS	LOC+DME	Circling	ⓐ Authorisation required, otherwise 7190 (1000) 3sm.	
C	6320 (200) ¾sm	6380 (262) 1sm	6790 (600) 1½ sm		
D			6890 (700) 2½ sm		
GS	80	100	120	140	160
ROD 3.0°	440	540	650	760	860
FAF-MAPt	4:30	3:35	3:00	2:34	2:15

DME IAH	3.0° ALT	LDA 4115x46 13501x150ft P 3°R (72) REIL
5.8	8100	
5	7850	
4	7520	
3	7200	
2	6880	
1	6560	
0.5	6380	NALS

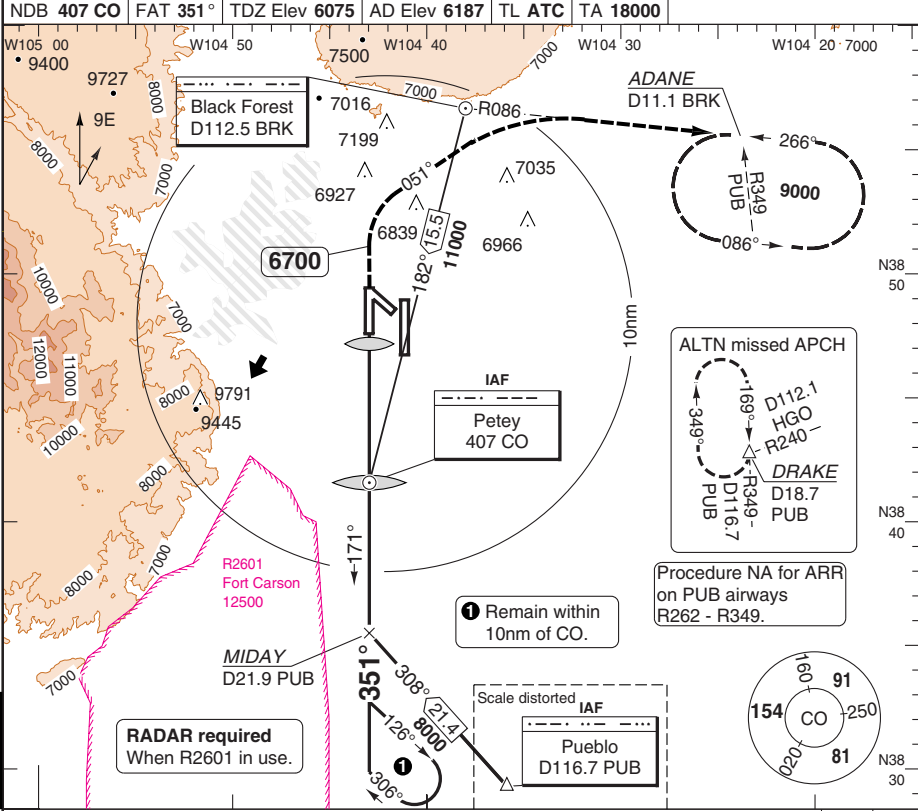
© Navtech - kcos03aip00

50 - 3

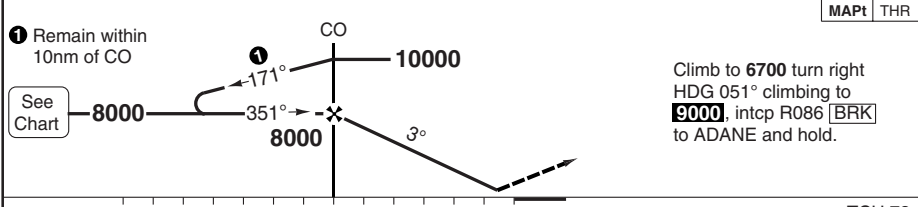
NDB RWY 35L

Municipal COLORADO SPRINGS

Springs APP 118.5 120.6	TWR 119.9 W 133.15 E	GND 121.7	DLV 134.45	ATIS 125.0	
NDB 407 CO	FAT 351°	TDZ Elev 6075	AD Elev 6187	TL ATC	TA 18000



50 - 4



ACFT	NDB	Circling ^a	GS	80	100	120	140	160	LDA 3360x46 11022x150ft P 3° (73)
C	6520 (445) 4500ft	6790 (600) 1½ sm	ROD 2.8°	400	500	600	700	790	
			FAF +20s	7770	7740	7710	7670	7640	
			+40s	7640	7580	7510	7440	7380	
D	6520 (445) 6000ft	6890 (700) 2½ sm	FAF -6520	3:30	2:48	2:20	2:00	1:45	
			FAF-MAPT	4:30	3:35	3:00	2:34	2:15	

^a Authorisation required, otherwise 7190 (1000) 3sm.

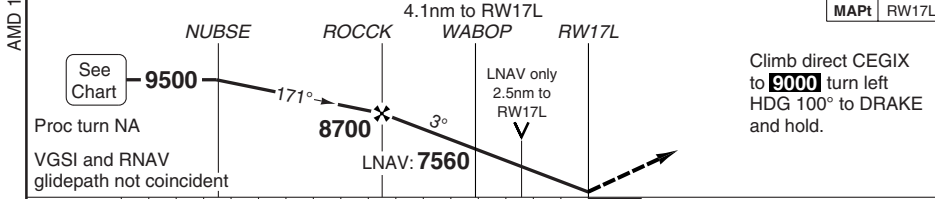
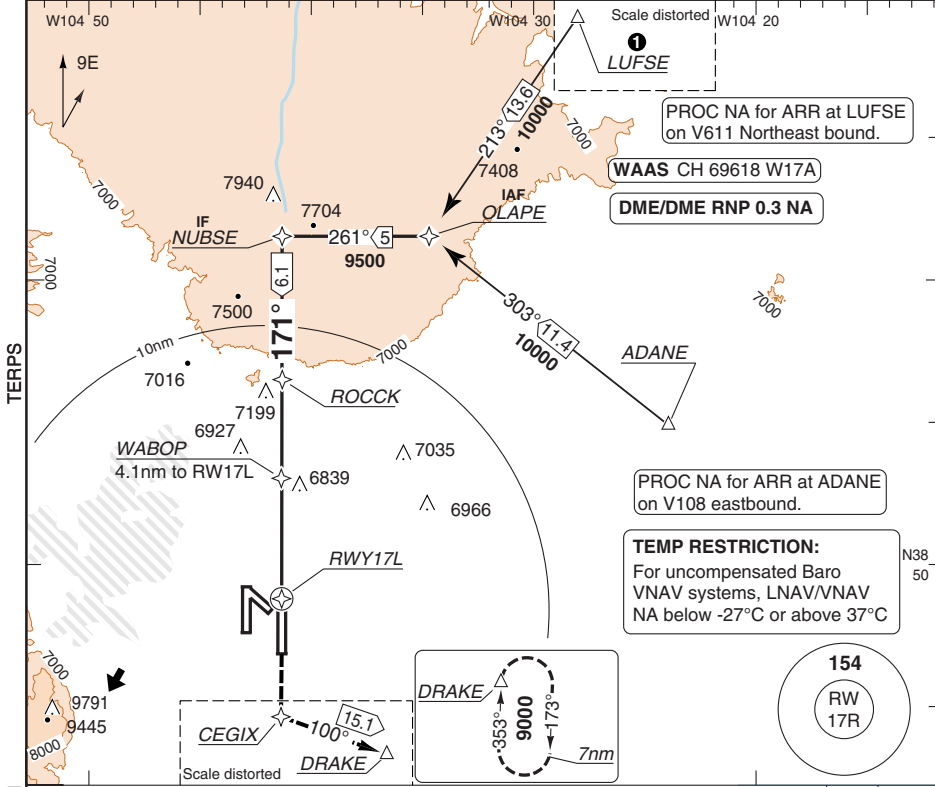
AMD 26
© Navtech - kcos04iap00

RNAV (GPS) Y RWY 17L

Municipal COLORADO SPRINGS

Springs APP 118.5 120.6	TWR 119.9 W 113.15 E	GND 121.7	DLV 134.45	ATIS 125.0
---	--	---------------------	----------------------	----------------------

RNAV	FAT 171°	TDZ Elev 6187	AD Elev 6187	TL ATC	TA 18000
------	-----------------	----------------------	---------------------	--------	-----------------



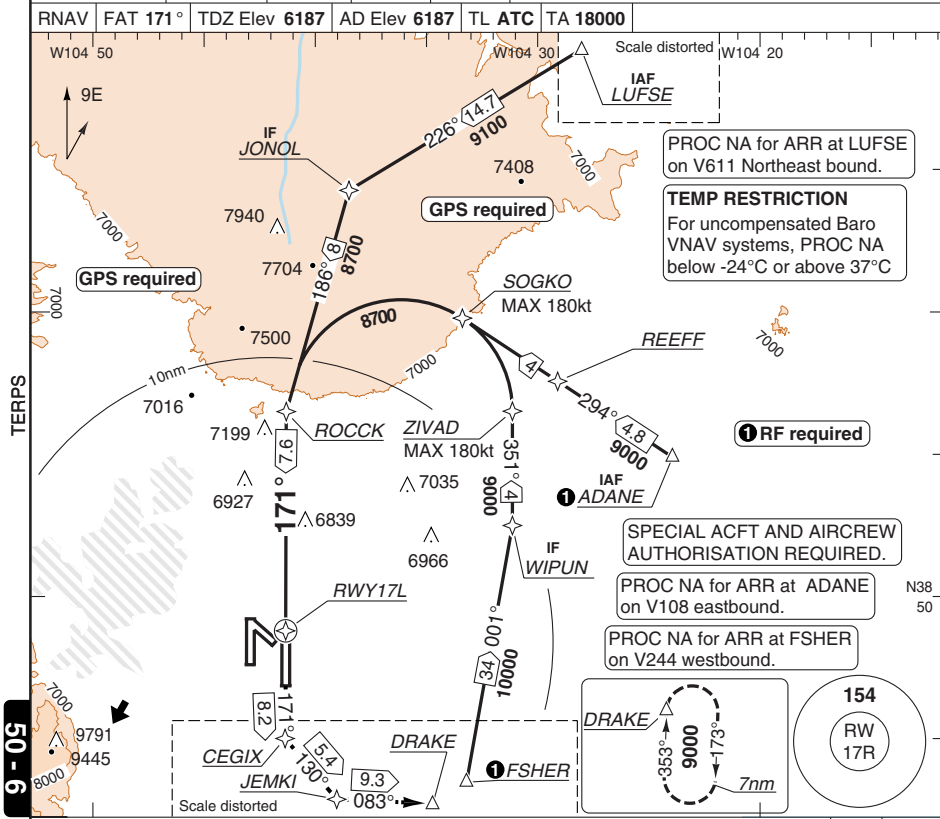
ACFT	LPV	LNAV/VNAV	LNAV	Circling ^a	THR	3.1° ALT	LDA 4115x46 13501x150ft P 3° (54)
C	6440 (250) 2400ft	6680 (484) 6000ft	7020 (833) 2sm	7020 (833) 2½ sm	9.8	9500	MALSR
D			7020 (833) 2¼ sm	7020 (833) 2¾ sm	8	8910	
					6	8250	
					5	7910	
					4	7580	
					3	7240	
					2	6910	
					1.5	6740	

Change: Tracks, missed approach. ^a Authorisation required, otherwise 7190 (1000) 3sm.

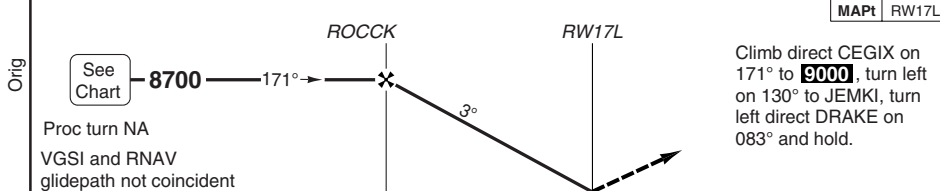
RNAV (RNP) Z RWY 17L

Municipal COLORADO SPRINGS

Springs APP 118.5 120.6	TWR 119.9 W 113.15 E	GND 121.7	DLV 134.45	ATIS 125.0	
RNAV	FAT 171°	TDZ Elev 6187	AD Elev 6187	TL ATC	TA 18000



9 - 05



STATE	ACFT	RNP 0.15	RNP 0.22	RNP 0.30	Note: Circling NA.	THR	3.1°	LDA 4115x46 13501x150ft P 3° (54)
	C	6570 (374) 4000ft	6650 (455) 5000ft	6730 (539) 1½ sm		17L	ALT	
D						8	8910	MALSR
						6	8250	
						5	7910	
						4	7580	
						3	7240	
						2	6910	
	GS	80	100	120	140	160		
	ROD 3.1°	450	560	670	790	900		

© Navtech - kcos08aiap00

Change: New chart.

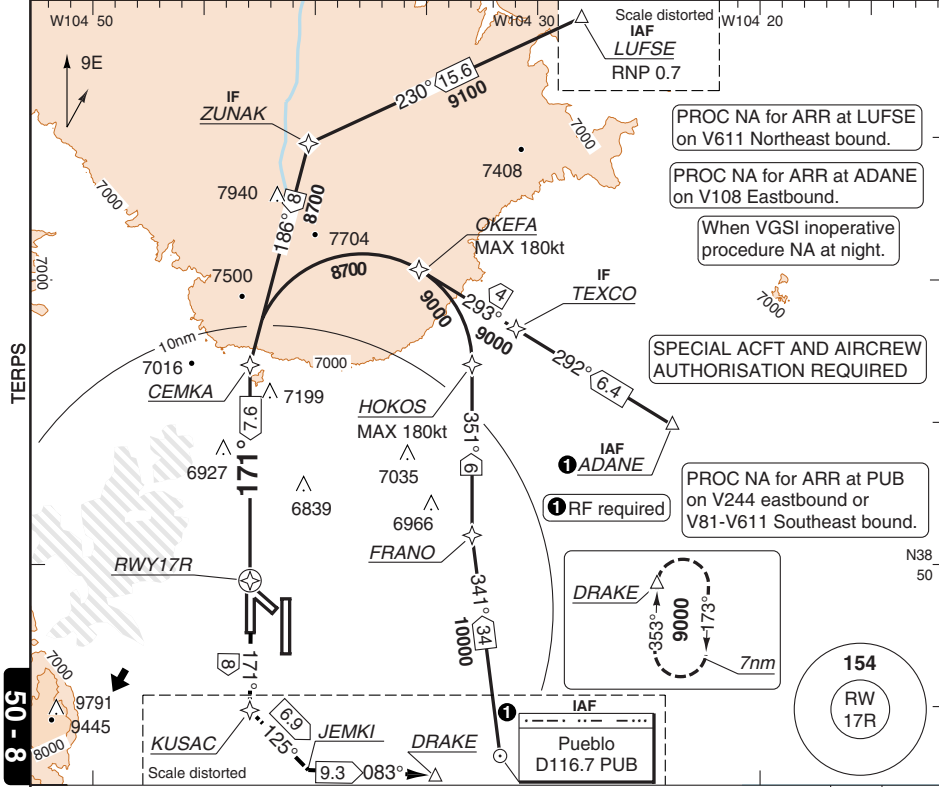
THIS CHART IS A PART OF NAVIGRAPH NDAC AND IS INTENDED FOR FLIGHT SIMULATION USE ONLY

RNAV (RNP) Z RWY 17R

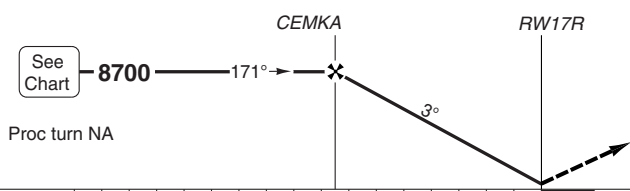
Municipal COLORADO SPRINGS

Springs APP 118.5 120.6	TWR 119.9 W 113.15 E	GND 121.7	DLV 134.45	ATIS 125.0
---	--	---------------------	----------------------	----------------------

RNAV	FAT 171°	TDZ Elev 6177	AD Elev 6187	TL ATC	TA 18000
------	----------	---------------	--------------	--------	----------



8 - 05
Orig-A



nm	17	16	15	14	13	12	11	10	9	8	7	6	5	4	3	2	1	0	TCH 55
----	----	----	----	----	----	----	----	----	---	---	---	---	---	---	---	---	---	---	--------

ACFT	RNP 0.15	RNP 0.22	RNP 0.30
C	6630 (445) 1½ sm	6750 (573) 2sm	6790 (612) 2¼ sm
D			

Note: Circling NA.

THR 17R	3.1° ALT	LDA 3360x46 11022x150ft P 3° (50), REIL
10.1	9500	
8	8840	
7	8510	
6	8190	
5	7860	
4	7530	
3	7210	
2.3	6980	

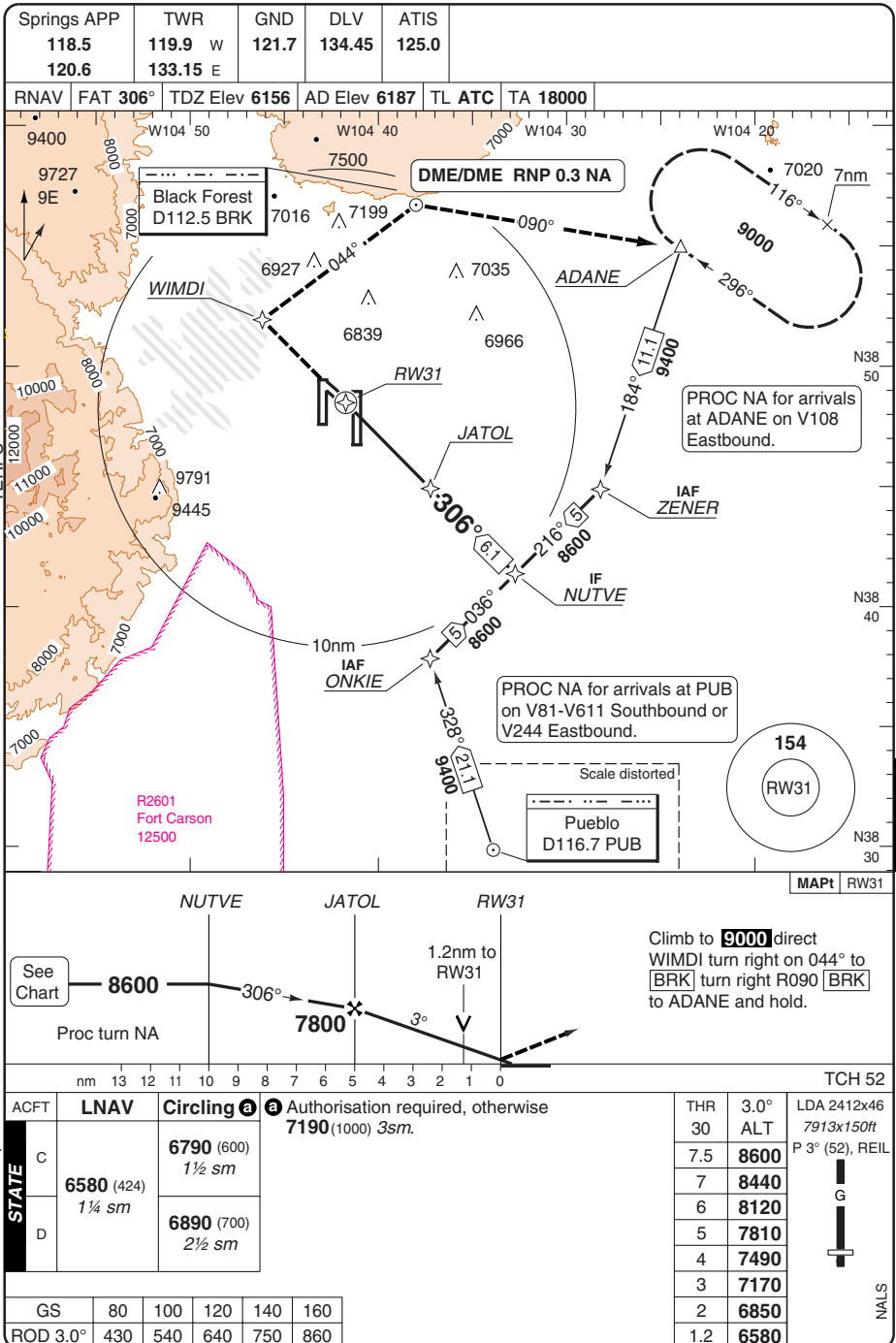
GS	80	100	120	140	160
ROD 3.1°	440	550	660	770	870

© Navitech - kcos08aiap00

Change: New chart.

RNAV (GPS) RWY 31

Municipal COLORADO SPRINGS



50 - 9

Orig-A

© Navtech - kcos09aijp00

Springs APP	TWR	GND	DLV	ATIS
118.5	119.9 W	121.7	134.45	125.0
120.6	133.15 E			

RNAV	FAT 306°	TDZ Elev 6156	AD Elev 6187	TL ATC	TA 18000
------	----------	---------------	--------------	--------	----------

STATE	ACFT	LNAV	Circling ⓐ
C		6580 (424)	6790 (600) 1½ sm
		1¼ sm	
D			6890 (700) 2½ sm

ⓐ Authorisation required, otherwise 7190 (1000) 3sm.

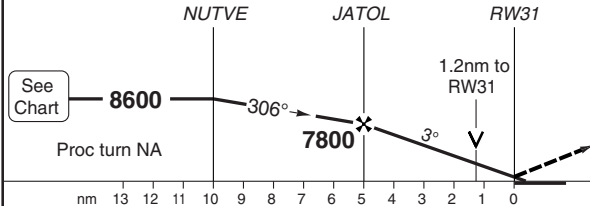
GS	80	100	120	140	160
ROD 3.0°	430	540	640	750	860

THR	3.0°	LDA 2412x46
30	ALT	7913x150ft
7.5	8600	P 3° (52), REIL
7	8440	
6	8120	
5	7810	
4	7490	
3	7170	
2	6850	
1.2	6580	



NALS

MAPt RW31

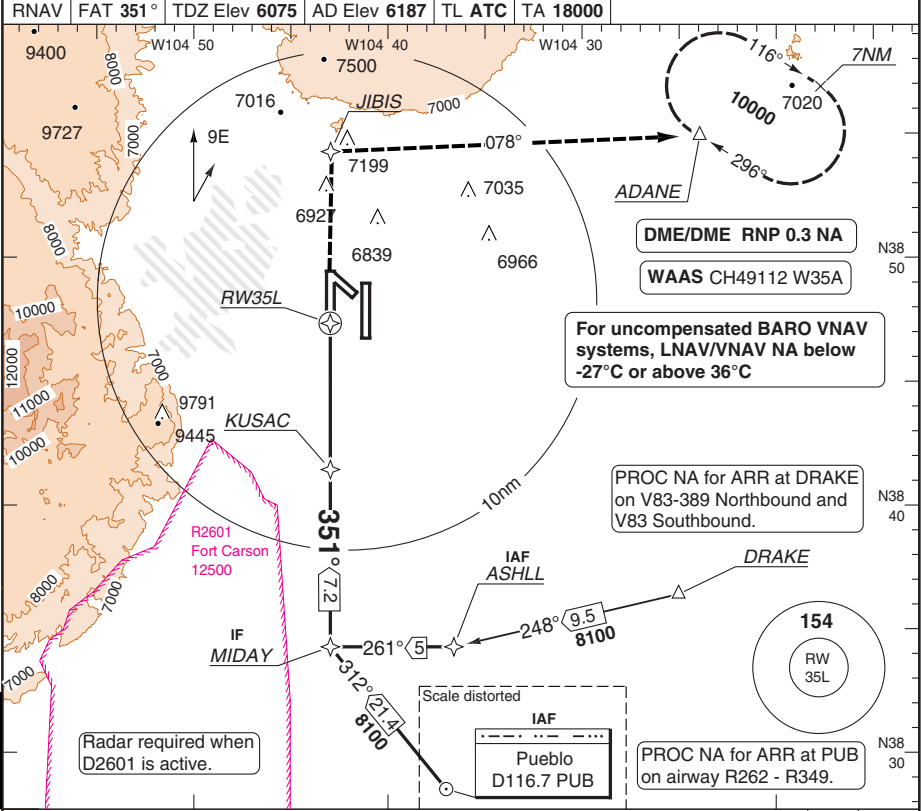


Climb to **9000** direct WIMDI turn right on 044° to [BRK] turn right R090 [BRK] to ADANE and hold.

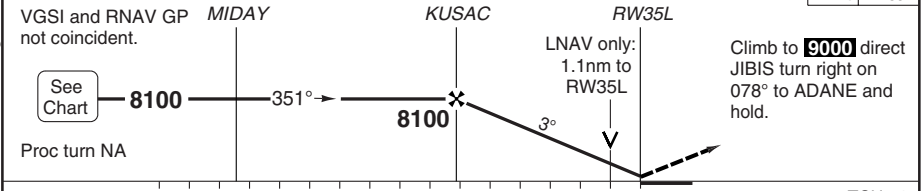
RNAV (GPS) Y RWY 35L

Municipal COLORADO SPRINGS

Springs APP 118.5 120.6	TWR 119.9 W 133.15 E	GND 121.7	DLV 134.45	ATIS 125.0	
RNAV	FAT 351°	TDZ Elev 6075	AD Elev 6187	TL ATC	TA 18000



MAP1 RW35L



GS	80	100	120	140	160	(a) Authorisation required, otherwise 7190 (1000) 3sm.
ROD 3.0°	440	540	650	760	860	

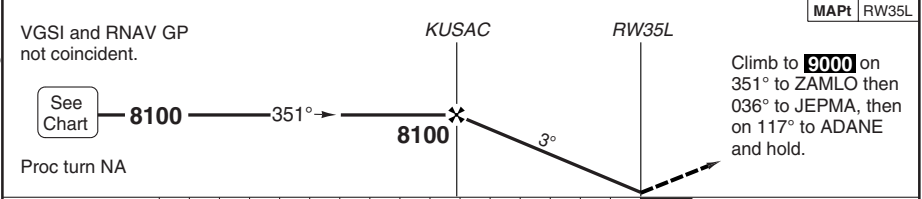
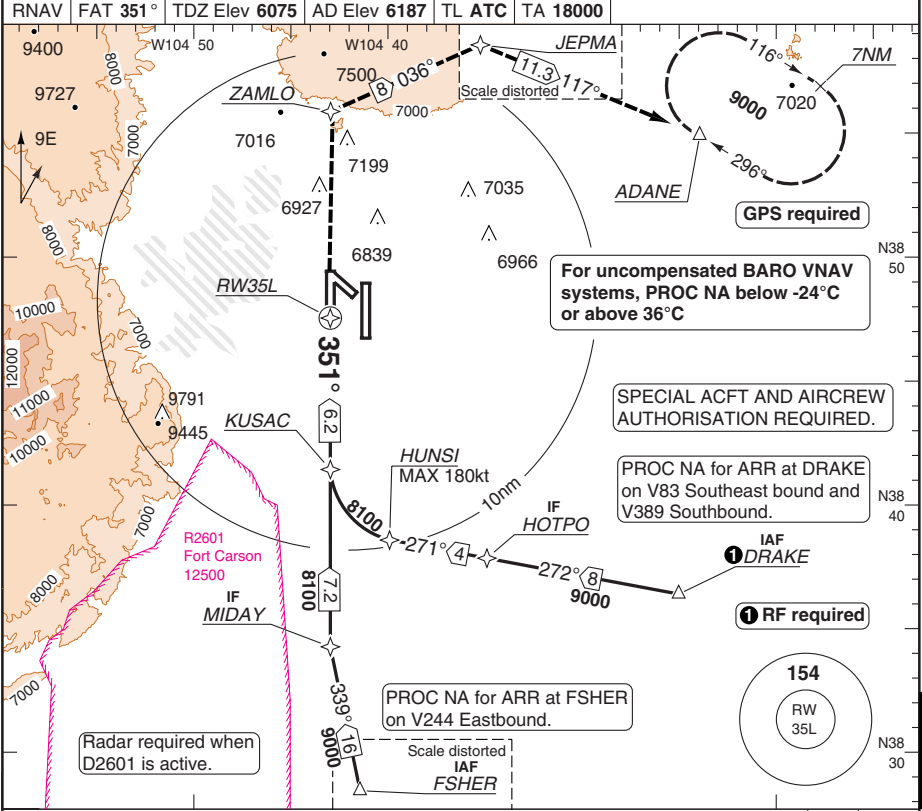
Change: New chart.

© Navtech - kcos10aip00

RNAV (RNP) Z RWY 35L

Municipal COLORADO SPRINGS

Springs APP 118.5 120.6	TWR 119.9 W 133.15 E	GND 121.7	DLV 134.45	ATIS 125.0	
RNAV	FAT 351°	TDZ Elev 6075	AD Elev 6187	TL ATC	TA 18000



nm		16	15	14	13	12	11	10	9	8	7	6	5	4	3	2	1	0	TCH 51
ACFT	RNP 0.15	RNP 0.30		Note: Circling NA.															
C	6350 (268) 2400ft	6400 (324) 4000ft																	
D																			
STATE																			
THR 35R	3.0° ALT	LDA 3360x46 11022x150ft P 3° (73)																	
6	8100																		
5	7780																		
4	7460																		
3	7140																		
2	6820																		
1.0	6480	MALSR																	
GS	80	100	120	140	160														
ROD 3.0°	440	540	650	760	860														

Change: New chart.

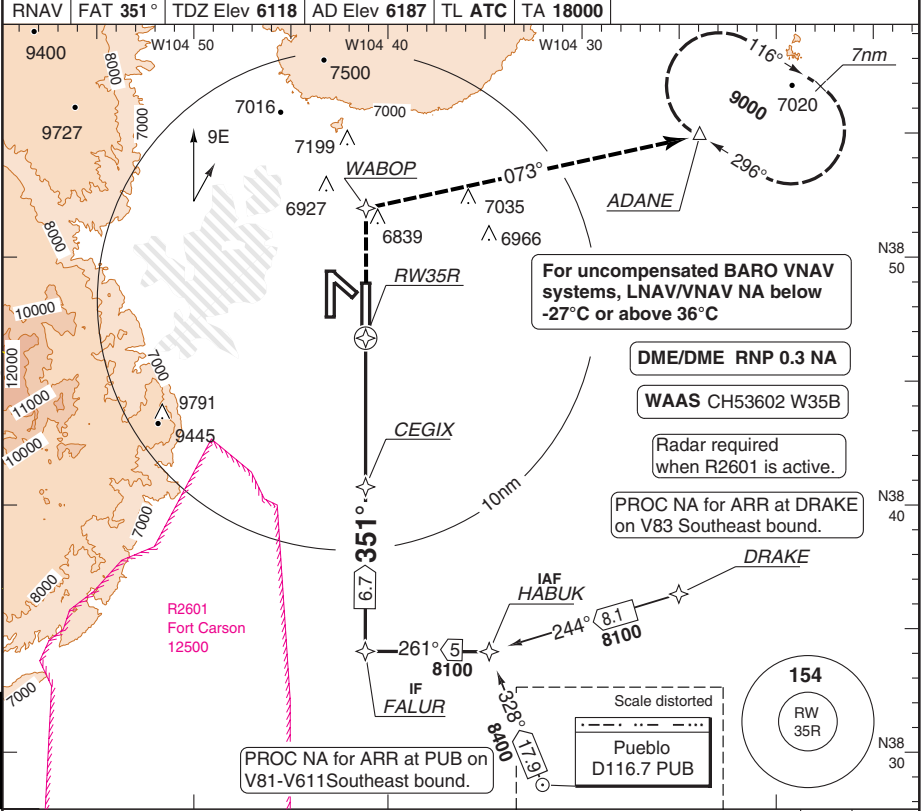
© Navtech - kcos11aiip00

50 - 11

RNAV (GPS) Y RWY 35R

Municipal COLORADO SPRINGS

Springs APP 118.5 120.6	TWR 119.9 W 133.15 E	GND 121.7	DLV 134.45	ATIS 125.0	
RNAV	FAT 351°	TDZ Elev 6118	AD Elev 6187	TL ATC	TA 18000



For uncompensated BARO VNAV systems, LNAV/VNAV NA below -27°C or above 36°C

DME/DME RNP 0.3 NA

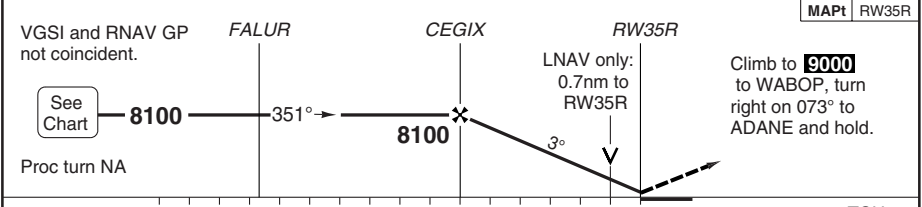
WAAS CH53602 W35B

Radar required when R2601 is active.

PROC NA for ARR at DRAKE on V83 Southeast bound.

PROC NA for ARR at PUB on V81-V611 Southeast bound.

50 - 12



AMD 3					MAPt RW35R				
VGSI and RNAV GP not coincident.					Climb to 9000 to WABOP, turn right on 073° to ADANE and hold.				
See Chart					LNAV only: 0.7nm to RW35R				
Proc turn NA					TCH 55				
ACFT	LPV	LNAV/VNAV	LNAV	Circling ⓐ	THR 35R	3.0° ALT	LDA 4115x46 13501x150ft P3°R(72), REIL		
C	6370 (250) ¾ sm	6400 (281) 1sm	6420 (300) 1sm	6790 (600) 1½ sm	6	8100			
D				6890 (700) 2½ sm	5	7780			
					4	7460			
					3	7140			
					2	6820			
					1.0	6480			
GS	80	100	120	140	160	ⓐ Authorisation required, otherwise			
ROD 3.0°	440	540	650	760	860	7190 (1000) 3sm			

© Navtech - kcos12aip00

Change: Tracks, missed approach.

THIS CHART IS A PART OF NAVIGRAPH NDAC AND IS INTENDED FOR FLIGHT SIMULATION USE ONLY

JAR-OPS Minima

Municipal COLORADO SPRINGS

The following Minima is for public transport aircraft and is based on FAA criteria and conforms to JAR-OPS1 regulations.

STRAIGHT-IN APPROACH		C				D			
Rwy	Procedure	DA/ MDA QNH Ft	HAT QFE Ft	RVR / Vis Ft/SM	RVR / Vis No ALS Ft/SM	DA/ MDA QNH Ft	HAT QFE Ft	RVR / Vis Ft/SM	RVR / Vis No ALS Ft/SM
17L	ILS (1)	6390	200	1800	4000	6390	200	1800	4000
17L	LOC	7060	880	2	2 1/2	7060	880	2 1/4	2 3/4
17L	RNAV Z (RNP 0.15)(3)	6570	380	4000	6000	6570	380	4500	1 1/4
17L	RNAV Z (RNP 0.22)(3)	6650	460	5000	1 1/2	6650	460	5300	1 1/2
17L	RNAV Z (RNP 0.30)(3)	6730	540	1 1/2	1 3/4	6730	540	1 1/2	1 3/4
17L	RNAV Y (LPV)	6440	250	2400	4000	6440	250	2400	4000
17L	RNAV Y (L/VNAV)	6680	490	6000	1 3/4	6680	490	6000	1 3/4
17L	RNAV Y (LNAV)	7020	840	2	2 1/2	7020	840	2 1/4	2 3/4
17R	RNAV Z (RNP 0.15)(3)	6630	450	1 1/2	N/A	6630	450	1 1/2	N/A
17R	RNAV Z (RNP 0.22)(3)	6750	580	2	N/A	6750	580	2	N/A
17R	RNAV Z (RNP 0.3)(3)	6790	620	2 1/4	N/A	6790	620	2 1/4	N/A
17R	RNAV Y (LPV)	6430	250	3/4	N/A	6430	250	3/4	N/A
17R	RNAV Y (LNAV)	7220	1050	3	N/A	7220	1050	3	N/A
31	RNAV (LNAV)	6580	430	1 1/4	N/A	6580	430	1 1/4	N/A
35L	ILS (2)	6280	200	2400	4000	6280	200	2400	4000
35L	LOC	6340	270	2600	5000	6340	270	4000	6000
35L	NDB	6520	450	4000	1 1/4	6520	450	6000	1 1/2
35L	RNAV Z (RNP 0.15)(3)	6380	300	3300	6000	6380	300	4500	1 1/4
35L	RNAV Z (RNP 0.30)(3)	6400	330	4000	6000	6400	330	4500	1 1/4
35L	RNAV Y (LPV)	6330	250	2400	4000	6330	250	2400	4000
35L	RNAV Y (L/VNAV)	6440	370	4000	1 1/4	6440	370	4500	1 1/4
35L	RNAV Y (LNAV)	6460	390	3300	6000	6460	390	5000	1 1/4
35R	ILS	6320	200	3/4	N/A	6320	200	3/4	N/A
35R	LOC	6380	270	1	N/A	6380	270	1 1/4	N/A
35R	RNAV Z (RNP 0.15)(3)	6420	300	1 1/4	N/A	6420	300	1 1/4	N/A
35R	RNAV Z (RNP 0.30)(3)	6430	320	1 1/4	N/A	6430	320	1 1/4	N/A
35R	RNAV Y (LPV)	6370	250	3/4	N/A	6370	250	3/4	N/A
35R	RNAV Y (L/VNAV)	6400	290	1	N/A	6400	290	1 1/4	N/A
35R	RNAV Y (LNAV)	6420	300	1 1/4	N/A	6420	300	1 1/4	N/A

Notes:

- (1) RVR increased to 2400ft when RTZL or RCLL are inop.
- (2) RVR 1800 authorised with use of Flight Director, Autopilot or HUD to DA.
- (3) Special aircraft and aircrew authorisation required.

JAR-OPS Minima

Municipal COLORADO SPRINGS

The following Minima is for public transport aircraft and is based on FAA criteria and conforms to JAR-OPS1 regulations.

CIRCLING		C			D		
Rwy	Procedure	MDA QNH Ft	HAA QFE Ft	Vis Ft/SM	MDA QNH Ft	HAA QFE Ft	Vis Ft/SM
17L ILS, LOC		7060	880	2 1/2	7060	880	2 3/4
17L RNAV Y		7020	840	2 1/2	7020	840	2 3/4
17R RNAV Y		7220	1040	3	7220	1040	3
Other procs (1)		6790	600	1 1/2	6890	700	2 1/2

Notes:

(1) All RNAV Z (RNP) procs N/A.

TAKE-OFF					
Lower than Standard		C		D	
Rwy	Facilities	RVR (Ft)	Vis (SM)	RVR (Ft)	Vis (SM)
13, 17L/R, 35R	REDL(H) or RCLL or RCLM (1)	1600	1/4	1600	1/4
Standard		RVR (Ft)	Vis (SM)	RVR (Ft)	Vis (SM)
13, 17L/R, 35R	3 and 4 engines	2400	1/2	2400	1/2
	1 and 2 engines	5000	1	5000	1
Higher than Standard		C		D	
Rwy	Facilities	Ceil (Ft)	Vis (SM)	Ceil (Ft)	Vis (SM)
31 (2)	-	-	-	-	-
35L (3)	-	300	1 1/4	300	1 1/4

Notes:

- (1) TDZ RVR controlling, if not substitute Mid point RVR. Vis 1/4sm permitted when adequate Vis. ref. available.
- (2) Standard with a min climb of 220ft/nm to 6900ft.
- (3) Or Standard with a min climb of 213ft/nm to 6400ft, or alternatively standard with 200ft/nm climb gradient when take off must occur no later than 1400ft prior to DER.

ALTERNATE		C		D	
Rwy	Procedure	Ceil (Ft)	Vis (SM)	Ceil (Ft)	Vis (SM)
17L (1)	ILS, LOC	900	2 1/2	900	2 3/4
17L	RNAV Y	900	2 1/2	900	2 3/4
17R (1)	RNAV Y	1100	3	1100	3
17R	RNAV Z	800	2 1/4	800	2 1/4
35L (1)	ILS	-	-	700	2
35R (1)	ILS, LOC	-	-	-	-
Others	Std: Precision Approach	600	2	600	2
Others	Std: Non-Prec. Approach	800	2	800	2

Notes:

(1) N/A when local weather not available.