

# KAGS

---

## Airport information:

Country: United States of America

City: AUGUSTA RGNL

Coordinates: N 33° 22.2', W 081° 57.9'

Elevation: 144

Customs:

Fuel: 100LL, Jet A

RFF: ARFF B

hours: H24

## Runways:

Runway 08

Takeoff length: 1829, Landing length: 1829

Runway 17

Takeoff length: 2439, Landing length: 2439

Runway 26

Takeoff length: 1829, Landing length: 1829

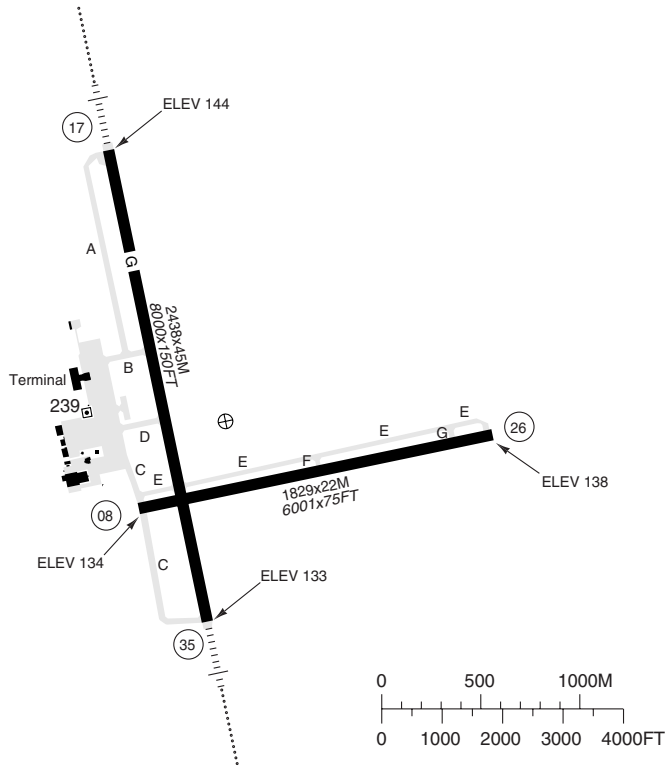
Runway 35

Takeoff length: 2439, Landing length: 2439

AUGUSTA REGIONAL BUSHFIELD AVIATION USA

RWY	QFU	APL	THL	RWL	SLOPE
08	084	- a	M	M	+0.1
26	264	- b	M	M	-0.1
17	174	ML-I a	H	H	-0.1
35	354	ML-I a	H	H	+0.1

a PAPI 3.00L  
b PAPI L



TKOF	RWY	ALL <b>x</b> <b>y</b>
	CLG/RVR or VIS FT	2 ENG: <b>0/5000</b> or <b>1</b> 3-4 ENG: <b>0/2400</b> or <b>1/2</b>

**WARNING**

Watch out for birds. Heavy activity BTN NOV-MAR.

**SPEED**

MAX IAS 250KT or MNM safe speed if greater below 10000.

**TAXI**

Be alert to RWY crossing CLR. Readback of all RWY holding instructions is required.

**ARCAL**

118.700 Type K (RWY 17/35) (See LEGENDS)

**DEP**

Climb in visual conditions. Cross Augusta AD MNM 1800.

RFF: Index B.

**x MNM Climb Gradient**

RWY 08: 6.5% (396FT/NM) to 2600 or **1700/2½** for climb in visual conditions.

RWY 17: 5.7% (347FT/NM) to 2400 or **1700/2½** for climb in visual conditions.

RWY 26: 6.2% (375FT/NM) to 2600 or **1700/2½** for climb in visual conditions.

RWY 35: 5.8% (350FT/NM) to 2600 or **1700/2½** for climb in visual conditions.

**y Authorized operators:**

**0/1600** or **1¼**  
For conditions see USA RAR.

**Circling**

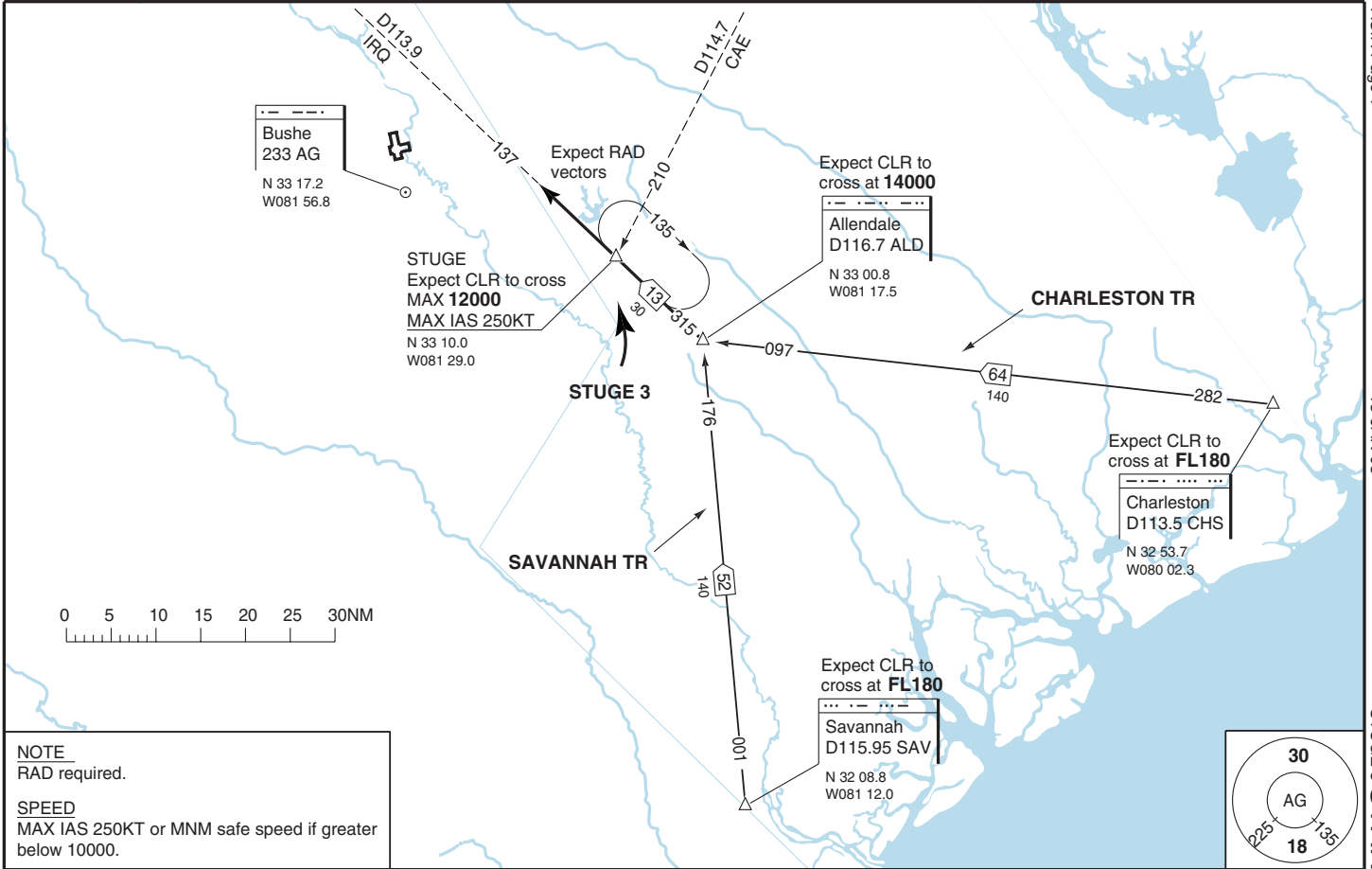
C	<b>1150/3</b>	(1005)
D	<b>1150/3</b>	(1005)

© European Aeronautical Group - kags001basq0

Change: New

THIS CHART IS A PART OF NAVIGRAPH NDAC AND IS INTENDED FOR FLIGHT SIMULATION USE ONLY

Change: New



AUGUSTA REGINALD BUSH FIELD GA USA

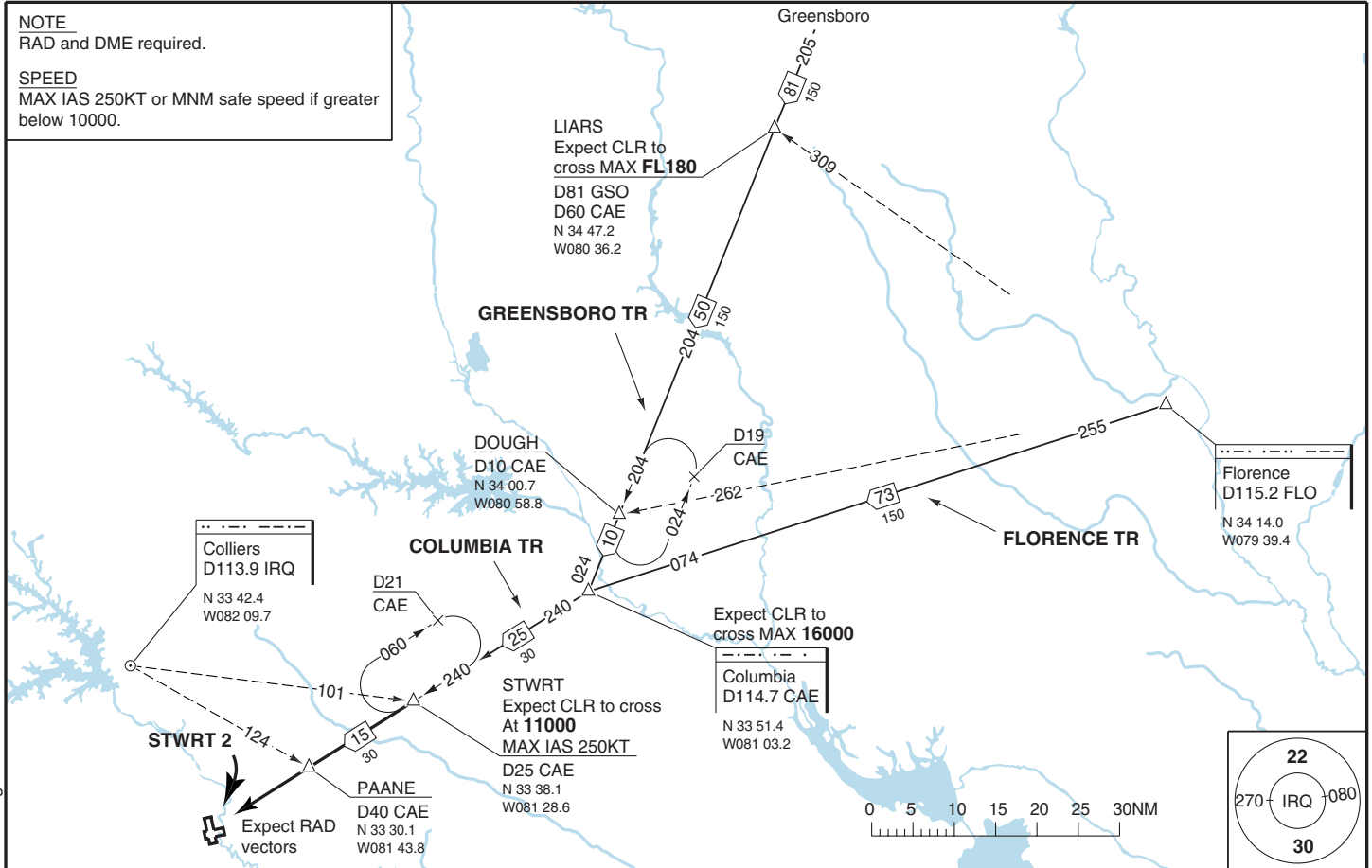
STWRT 2 STAR

NOTE  
RAD and DME required.

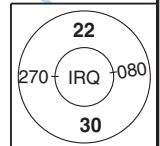
SPEED  
MAX IAS 250KT or MNM safe speed if greater below 10000.

15 JAN 08

ASIR Page 2



AUGUSTA REGIONAL BOSCH FIELD GA USA



Change: New

THIS CHART IS A PART OF NAVIGRAPH NDAC AND IS INTENDED FOR FLIGHT SIMULATION USE ONLY



TERPS

Augusta  
 ATIS 132.750  
 APP/DEP 126.800 170°-349° 1145-0400  
 119.150 350°-169° 1145-0400  
 128.100 (Atlanta Center) 0400-1145

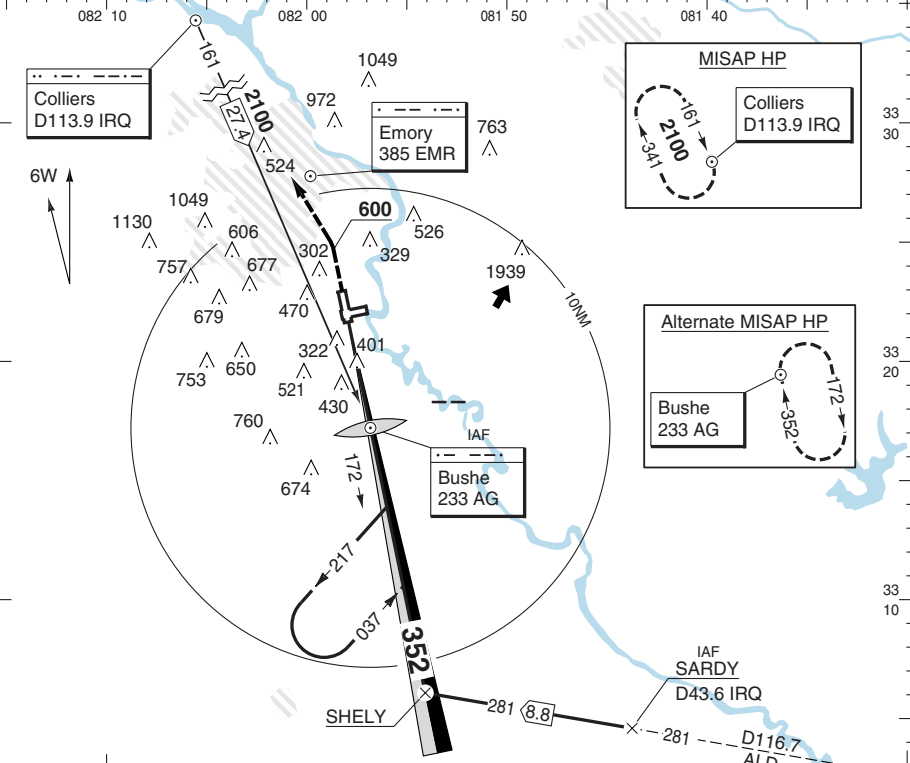
AGS - KAGS **2** 15 JAN 08

ILS - 35

TWR 118.700 1145-0400  
 GND 121.900

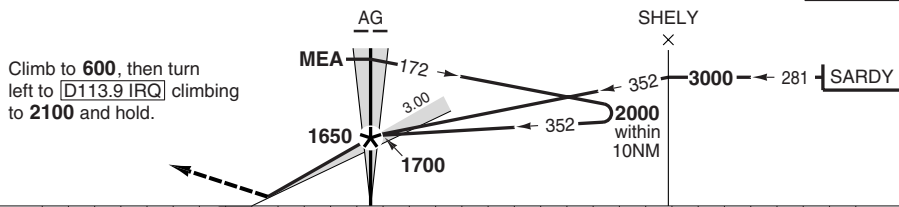
PAPI 3.00L  
 G  
 LDG 2438x45M/8000x150FT/40.1

ILS 110.5 IAGS 352° GP 3.00 TCH 55



MAPt THR / 4.5NM after AG

TA 18000



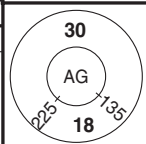
Climb to 600, then turn left to [D113.9 IRQ] climbing to 2100 and hold.

NM 8 7 6 5 4 3 2 1 0 1 2 3 4 5 6 7 8 9 10 11 12 13 14 15 16 17 18 19 20 21 22 23 NM

LLZ: FAF-MAP/ROD 90KT 3:00/490 100KT 2:41/550 120KT 2:15/660 140KT 1:55/760 160KT 1:41/870

STATE	ILS	LLZ	SRE
ACFT	C D	C D	C D
MIN	340 (200)	660 (524)	700 (564)
RVR	2400	5000 6000	5000 6000
APL U/S	4000	1½ 1¼	1½ 1¼

NOTE: If local altimeter setting not received, use Daniel Field altimeter setting and increase DA to 400. Increase all MDAs 60.



TDZ ELEV 136 FT/AD ELEV 145 FT Change: New

**THIS CHART IS A PART OF NAVIGRAPH NDAC AND IS INTENDED FOR FLIGHT SIMULATION USE ONLY**

© European Aeronautical Group - kags02ibasq - Y - P

AUGUSTA REGIONAL BUSHFIELD GA USA

