

## Airport information:

Country: United States of America

City: ALBUQUERQUE INTL

Coordinates: N 35° 02.4', W 106° 36.6'

Elevation: 5355

Customs: : PPR

Fuel: 100LL, Jet A, Jet A1, Jet A1+

RFF: ARFF C

hours: H24.

## Runways:

Runway 03

Takeoff length: 3048, Landing length: 3048

Runway 08

Takeoff length: 4204, Landing length: 3899

Runway 12

Takeoff length: 1829, Landing length: 1829

Runway 17

Takeoff length: 3048, Landing length: 2777

Runway 21

Takeoff length: 3048, Landing length: 3048

Runway 26

Takeoff length: 4204, Landing length: 4204

Runway 30

Takeoff length: 1829, Landing length: 1829

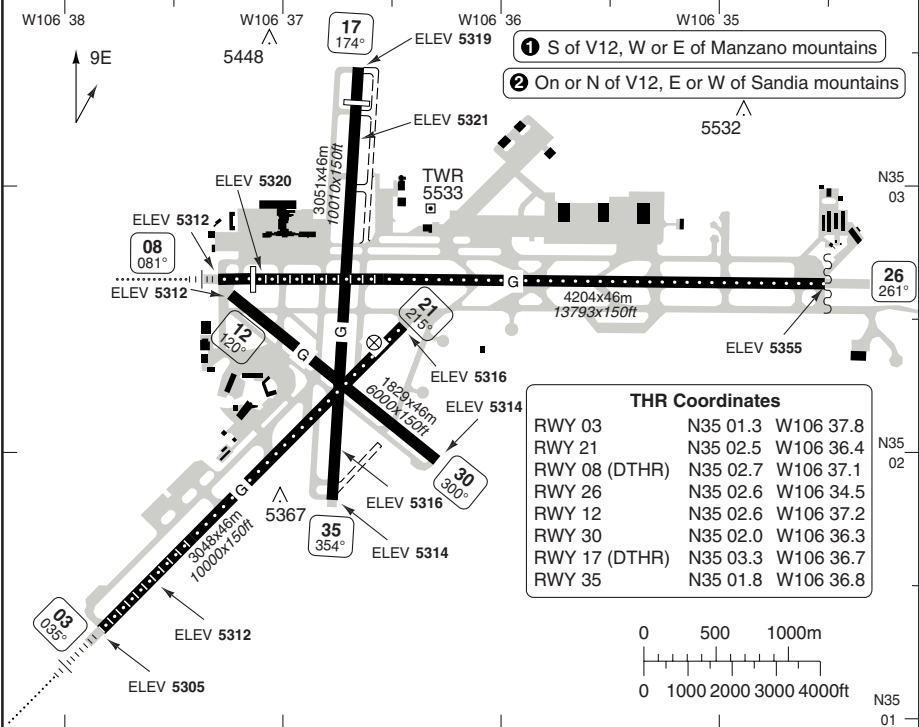
Runway 35

Takeoff length: 2777, Landing length: 2777

AERODROME

Albuquerque CLR 119.2	GND 121.9	TWR 120.3 123.775	DEP 123.9 ① 127.4 ② 124.4	ATIS (D) 118.0
--------------------------	--------------	-------------------------	---------------------------------	-------------------

AD Elev 5355	ARP: N35 02.4 W106 36.6	RFF: Index C	AD HR: H24
--------------	-------------------------	--------------	------------



RWY 03	N35 01.3	W106 37.8
RWY 21	N35 02.5	W106 36.4
RWY 08 (DTHR)	N35 02.7	W106 37.1
RWY 26	N35 02.6	W106 34.5
RWY 12	N35 02.6	W106 37.2
RWY 30	N35 02.0	W106 36.3
RWY 17 (DTHR)	N35 03.3	W106 36.7
RWY 35	N35 01.8	W106 36.8

RWY	Slope	TORA m/ft	LDA m/ft	ALS	REDL	RCLL	Additional
03	+0.1	3048 / 10000	3048 / 10000	M-I	H	15m	P 3° (62), REIL
21	-0.1	3048 / 10000	3048 / 10000	-	H	-	P, REIL
08	+0.3	4204 / 13793	3899 / 12793	M-I	H	15m	3BAV 2.95°L (54)
26	-0.3	4204 / 13793	4204 / 13793	-	H	-	P 3° (83), REIL
12	0	1829 / 6000	1829 / 6000	-	M	-	-
30	0	1829 / 6000	1829 / 6000	-	M	-	P 3° (40), REIL
17	0	3048 / 10000	2777 / 9110	-	M	-	AV 3°L (53), REIL
35	0	2777 / 9110	2777 / 9110	-	M	-	AV 3°L (55), REIL

Note: RWY 03/21 and RWY 08/26 RCLL not Bidirectional. RCLL on RWY 03 and RWY 08 only.

RWY	Facilities	RVR/VIS	
		2 ENG	3-4 ENG
All <b>a</b>	HREDL or RCLL or RCL	1600ft / 1/4sm	
	Adequate vis ref	1/4sm	
	Standard	5000ft / 1sm	2400ft / 1/2sm

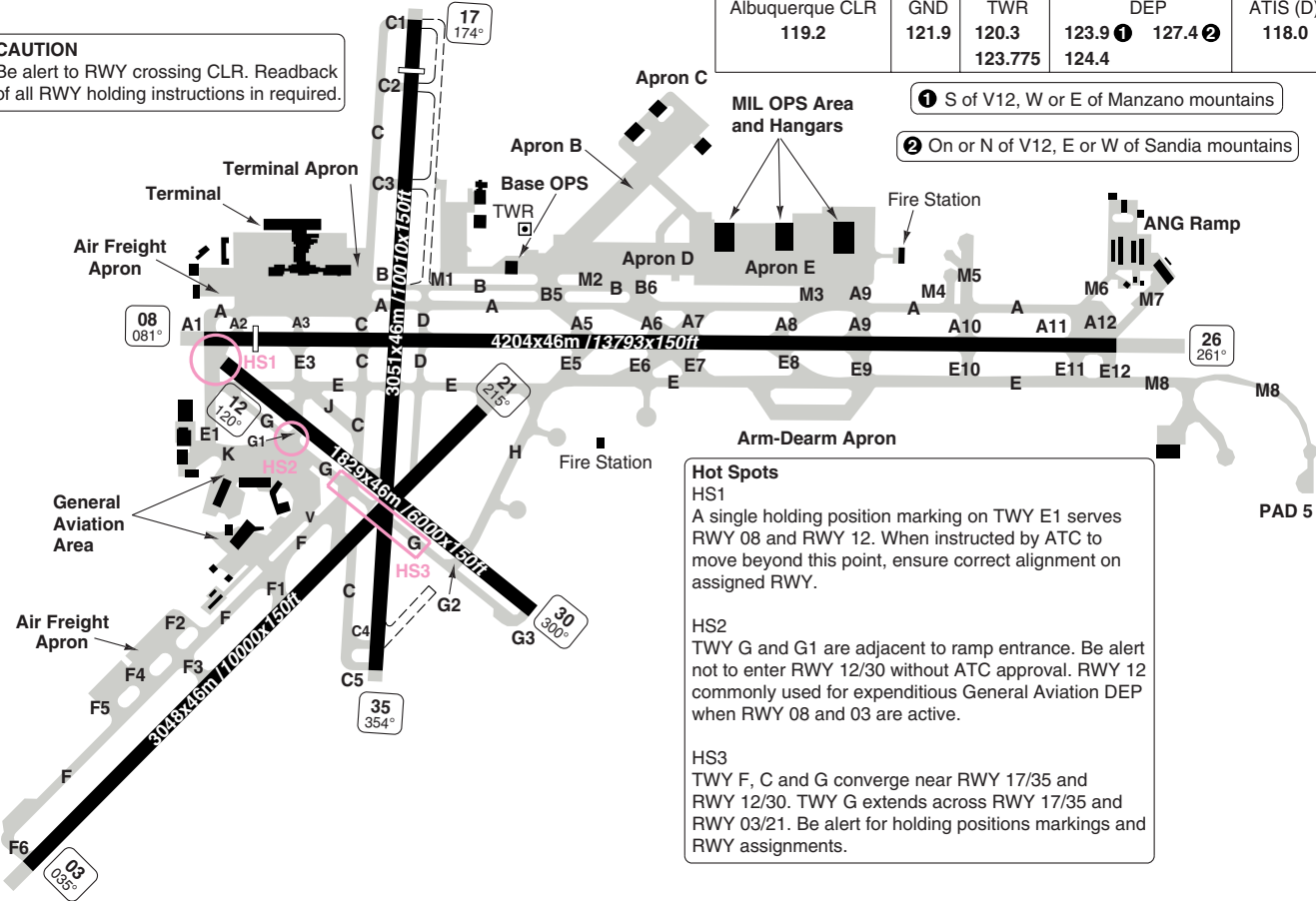
**a** RWY 03: MNM Climb of 3.9% (240ft/nm) to 5600, Otherwise 200/1sm  
 Alternatively, a MNM Climb of 3.3% (200ft/nm) and take off must occur no later than 1900ft prior to DER  
 RWY 08: MNM Climb of 8.5% (515ft/nm) to 7800

Change: New spec.

**THIS CHART IS A PART OF NAVIGRAPH NDAC AND IS INTENDED FOR FLIGHT SIMULATION USE ONLY**

**CAUTION**

Be alert to RWY crossing CLR. Readback of all RWY holding instructions is required.



GENERAL

GENERAL

1. **AERODROME RESTRICTION**  
 Air carrier GND handling not avbl BTN 0800-1130.
2. **WARNING**
  - 2.1 Bird hazard BTN OCT-DEC and MAR-MAY.
  - 2.2 Heavy student copter traffic, control firing area S of the AD.
  - 2.3 Unlighted water TWR 200ft GND, 1.5 miles S of RWY 35.
3. **SPEED**  
 MAX 250kt or MNM safe speed if greater below 10000ft.
4. **CIRCUITS**  
 RWY 03, 08, 12, 17 right hand circuit.
5. **NOISE ABATEMENT PROCEDURE**  
 DEP on RWY 08:  
 - Expect left turn at D13.5.  
 - BTN MON-FRI 04-14 and SAT-SUN 04-16 expect right turn.
6. **WEATHER**  
 HIWAS (Hazardous Inflight Weather Advisory Service) avbl on 113.2 ABQ.
7. **RWY RESTRICTIONS**  
 DEP on RWY 03 or 35 and ARR on RWY 17 are restricted and require prior coordination with TWR.
8. **TWY RESTRICTIONS**
  - 8.1 TWY D north of TWY B CLSD indefinitely.
  - 8.2 TWY H military use only.
9. **TAXI**
  - 9.1 Be alert to RWY crossing CLR.  
 Readback of all RWY holding instructions is required.
  - 9.2 Use extreme care taxiing N on TWY E1 to RWY 08, holding position for RWY 08/26 collocated with RWY 12/30 holding position prior to THR 12.

ARRIVAL

Open

DEPARTURE

1. **OBSTACLE DEP PROCEDURE**
  - 1.1 - RWY 03, 30, 35:  
 Climbing left turn to ABQ.  
 - RWY 08:  
 Climbing right turn to ABQ.  
 MAX 250kt until ABQ.  
 - RWY 12, 17, 21:  
 Climbing right turn to ABQ.  
 - RWY 26:  
 Climb to ABQ.  
 If required, continue climb in ABQ hold (W, left turn, 077° INBD) to cross ABQ at or above MEA/MCA for route of flight.
  - 1.2 CIO:  

RWY 03		
Light	5344ft	167m from DER/ 175m right of CL.
Light	5382ft	643m from DER/ 305m left of CL.
Multiple Tanks	Upto 5469ft	Beginning 1512m from DER/ 521m left of CL.
RWY 12		
Electrical Equipment	5315ft	11m from DER/ 65m right of CL.
RWY 17		
Light	5328ft	35m from DER/ 110m right of CL.
Pole	5321ft	76m from DER/ 129m left of CL.
RWY 21		
Terrain	Upto 5319ft	Beginning 7m from DER/ 84m left to 89m right of CL.
RWY 30		
Tower	5393ft	322m from DER/ 226m right of CL.
RWY 35		
Light on Fence	5326ft	32m from DER/ 3m right of CL.
Sign	5328ft	50m from DER/ 43m left of CL.
Vehicles on road	Upto 5335ft	66m from DER/ from left to right of CL.
Multiple Trees	Upto 5367ft	96m from DER/ 16m left of CL.
Multiple Trees	Upto 5362ft	Beginning 100m from DER/ 52m right of CL.
Tower	5410ft	978m from DER/ 262m right of CL.

# Radar Procedures

Albuquerque APP  
**123.9 ① 127.4 ②**  
**126.3**

TWR  
**120.3**  
**123.775**

GND  
**121.9**

ATIS (D)  
**118.0**

- ① S of V12, W or E of Manzano mountains
- ② On or N of V12, E or W of Sandia mountains

## SRA RWY 03

ACFT	SRA	Circling <b>a</b>
<b>STATE</b>	C	<b>5700</b> (388) <i>1sm</i>
	D	<b>5700</b> (388) <i>1½sm</i>

**a** Authorisation required, otherwise **6360** (1000) *3sm*

## SRA RWY 08

ACFT	SRA	Circling <b>a</b>
<b>STATE</b>	C	<b>5700</b> (384) <i>3500ft</i>
	D	<b>5700</b> (384) <i>5000ft</i>

**a** Authorisation required, otherwise **6360** (1000) *3sm*

## SRA RWY 17

ACFT	SRA	Circling <b>a</b>
<b>STATE</b>	C	<b>5960</b> (600) <i>1½sm</i>
	D	<b>6060</b> (700) <i>2½sm</i>

**a** Authorisation required, otherwise **6360** (1000) *3sm*

## SRA RWY 35

ACFT	SRA	Circling <b>a</b>
<b>STATE</b>	C	<b>5800</b> (486) <i>1½sm</i>
	D	<b>5800</b> (486) <i>1½sm</i>

**a** Authorisation required, otherwise **6360** (1000) *3sm*

Albuquerque CLR 119.2	GND 121.9	TWR 120.3 123.775	APP 123.9 ① 127.4 ② 126.3	DEP 123.9 ① 127.4 ② 124.4	ATIS (D) 118.0
--------------------------	--------------	-------------------------	---------------------------------	---------------------------------	-------------------

TA 18000 AD Elev 5355

① S of V12, W or E of Manzano mountains

② On or N of V12, E or W of Sandia mountains

RAD required

**CAUTION**  
Mountainous terrain all quadrants.  
Hang glider activity in vicinity of mountains.

Durango  
D108.2 DRO

N37 09.2  
W107 45.0

Alamosa  
D113.9 ALS

N37 21.0  
W105 48.9

Rattlesnake  
D115.3 RSK

N36 44.9  
W108 05.9

Taos  
D117.6 TAS

N36 36.5  
W105 54.4

**ALBUQUERQUE 2**  
ABQ2

Gallup  
D115.1 GUP

N35 28.6  
W108 52.4

Fort Union  
D117.3 FTI

N35 39.5  
W105 08.1

Tucumcari  
D113.6 TCC

N35 10.9  
W103 35.9

Zuni  
D113.4 ZUN

N34 58.0  
W109 09.3

St Johns  
D112.3 SJN

N34 25.4  
W109 08.6

Albuquerque  
D113.2 ABQ

N35 02.6  
W106 49.0

Socorro  
D116.8 ONM

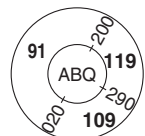
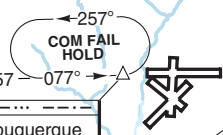
N34 20.3  
W106 49.2

Corona  
D115.5 CNX

N34 22.0  
W105 40.7

Texico  
D112.2 TXO

N34 29.7  
W102 50.4



**NOTE:** Expect CLR to filed ALT/FL 5 min after DEP.

**NAP:** When CLG is 5000ft and VIS 7miles or greater, for informal NAP, request ACFT(except STOL ACFT), making a left turn from RWY 08, to delay their turn until D13.5 ABQ.

SID	Routeing
ALBUQUERQUE 2	Fly assigned HDG for vectors to filed/assigned route.

**COM FAIL:** If no transmissions are received for 1 min after DEP and a climb to 14000 or higher has not been issued, proceed direct to ABQ, climb in HP to 14000, then proceed via assigned fix/route. If cleared above 14000 climb on assigned HDG to 14000, then proceed via assigned fix/route.

**SID** LARGO 2

**INTL** ALBUQUERQUE

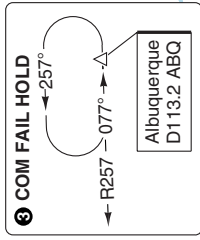
Albuquerque CLR 119.2	GND 121.9	TWR 120.3 123.775	APP 123.9 ① 127.4 ② 126.3	DEP 123.9 ① 127.4 ② 124.4	ATIS (D) 118.0
--------------------------	--------------	-------------------------	---------------------------------	---------------------------------	-------------------

TA 18000 AD Elev 5355 Rattlesnake D115.3 RSK

① S of V12, W or E of Manzano mountains

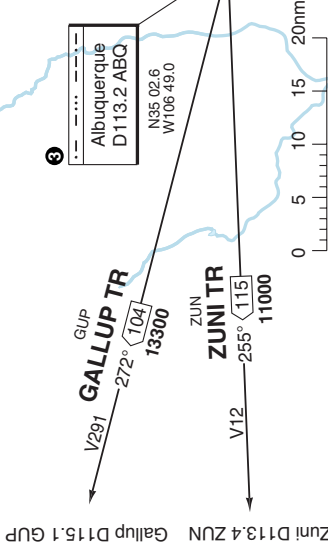
② On or N of V12, E or W of Sandia mountains

**CAUTION**  
Mountainous terrain all quadrants.  
Hang glider activity in vicinity of mountains.



HAMOS  
D59 ABQ  
N36 01.3  
W106 57.8

RSK  
RATTLESNAKE TR  
340° 59  
15000



**NOTE:** Expect CLR to filed ALT/FL 5 min after DEP.

**NAP:** When CLG is 5000ft and VIS 7miles or greater, for informal NAP, request ACFT(except STOL ACFT), making a left turn from RWY 08 to delay their turn until D13.5 ABQ.

**MINM CLIMB GRADIENT:** RWY 08 Left Turn: CAT A/B: 3.6% up to 8000, CAT C/D: 7.8% up to 9000.  
RWY 08 Right Turn: CAT AB: 6.6% up to 8000, CAT C/D: 6.6% up to 9000.

SID	Routing
LARGO 2	Fly assigned HDG for vectors to filed/assigned routes. RWY 08: When passing 5750 - turn left/right to assigned HDG.
TRANSITION	<b>Routing</b>
GALLUP	ABQ - R272 ABQ (R090 GUP) - GUP .
RATTLESNAKE	ABQ - R340 ABQ - 294°/R114 RSK - RSK.
ZUNI	ABQ - R255 ABQ (R073 ZUN) - ZUN.

**COM FAIL:** If no transmissions are received for 1 min after DEP and a climb to 14000 or higher has not been issued, proceed direct to ABQ, climb in HP to 14000, then proceed via assigned fix/route. If cleared above 14000 climb on assigned HDG to 14000, then proceed via assigned fix/route.

Change: New spec.

**THIS CHART IS A PART OF NAVIGRAPH NDAC AND IS INTENDED FOR FLIGHT SIMULATION USE ONLY**

Albuquerque APP 123.9 ① 127.4 ② 126.3	TWR 120.3 123.775	GND 121.9	ATIS (D) 118.0
---	-------------------------	--------------	-------------------

- TL ATC AD Elev 5355
- ① S of V12, W or E of Manzano mountains
  - ② On or N of V12, E or W of Sandia mountains

**CURLY 2**  
PROC applicable only to Turbo PROP and JET ACFT operating at or above 15000

**CURLY**  
MAX 300kt  
JET: Expect CLR to cross  
At **15000**  
D26 ABQ  
N35 25.1  
W107 05.5

**GALLUP TR**  
GUP  
12000  
87 078°

Gallup Muni  
KGUP

Gallup  
D115.1 GUP  
N35 28.6  
W108 52.4

**ZUNI TR**  
ZUN  
73 090°  
11500

Zuni  
D113.4 ZUN  
N34 58.0  
W109 09.3

**ST JOHNS TR**  
SJM  
72 066°  
11500

St Johns  
D112.3 SJN  
N34 25.4  
W109 08.6

Grants-Milan Muni  
KGNT

**LAVAN**  
MAX 300kt  
JET: Expect to cross  
At **15000**  
D26 ABQ  
N34 50.8  
W107 17.1

**LAVAN 3**  
24 050°

(IRULY)  
N34 39.7  
W107 43.0

**TANER**  
D58 ABQ  
N35 52.1  
W107 25.7

**TANER TR**  
11000  
32 136°

**FRIHO 4**  
DME required

**FLYBY**  
D35 ABQ  
D71 FTI  
N35 36.1  
W106 34.8

**FRIHO 4**  
186°  
12000  
186°  
100 9000

③ **FRIHO**  
MAX 300kt  
JET: Expect to cross  
At **15000**  
D25 ABQ  
N35 26.3  
W106 39.0

Albuquerque  
D113.2 ABQ  
N35 02.6  
W106 49.0

Socorro  
D116.8 ONM  
N34 20.3  
W106 49.2

**ESPAN**  
D68 ABQ  
N36 07.2  
W106 21.4

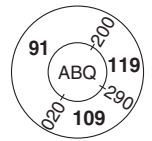
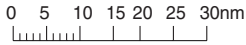
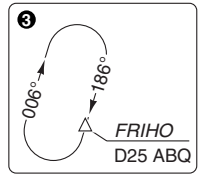
**ESPAN TR**  
16000  
33 186°

**FORT UNION TR**  
FTI  
255° 71  
16000

Fort Union  
D117.3 FTI  
N35 39.5  
W105 08.1

Santa Fe Muni  
KSAF

Santa Fe  
D110.6 SAF  
N35 32.4  
W106 03.9

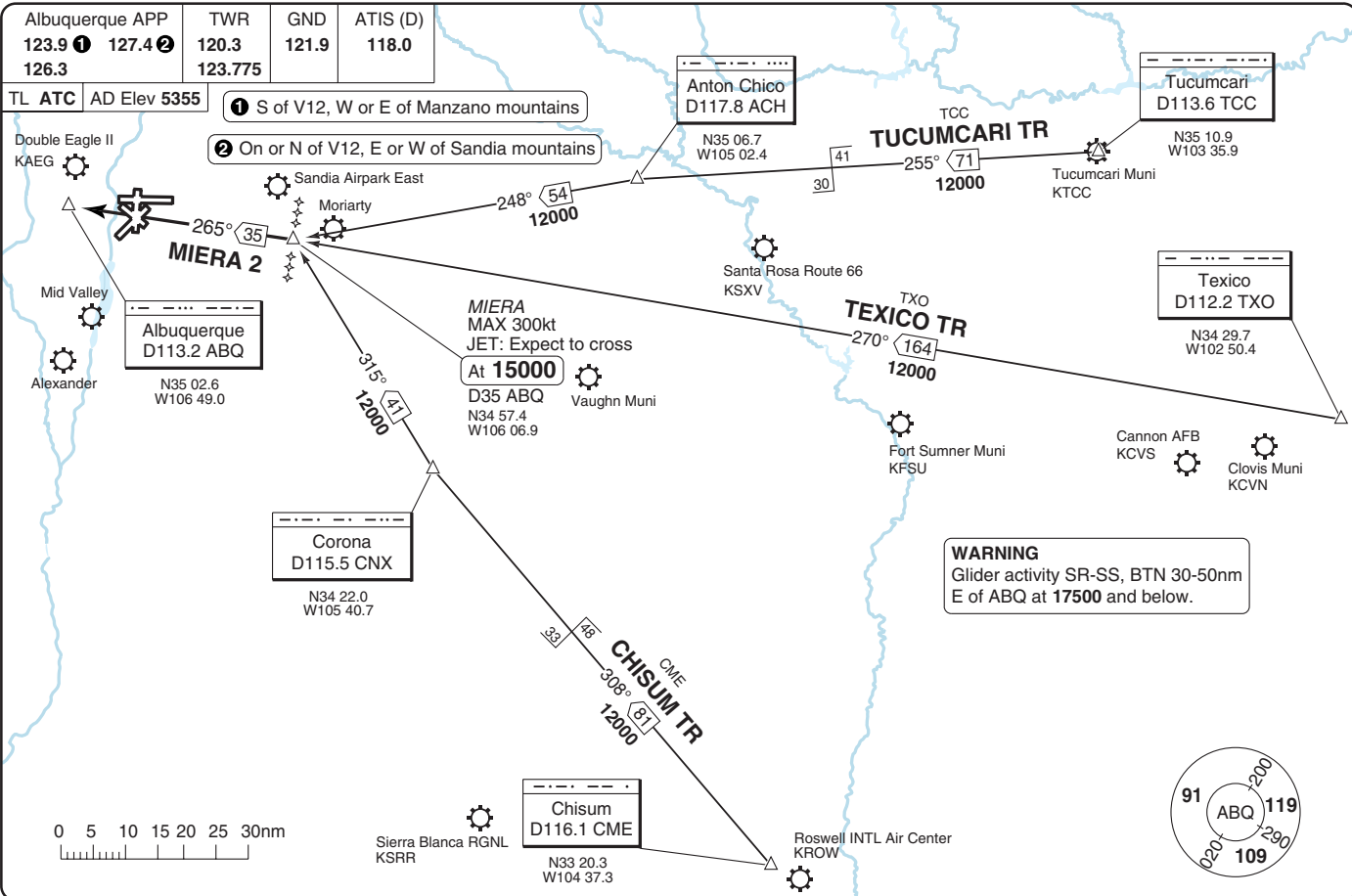


THIS CHART IS A PART OF NAVIGRAPH NDAC AND IS INTENDED FOR FLIGHT SIMULATION USE ONLY

Change: New spec.

# INTL ALBUQUERQUE

# STAR MIERA 2

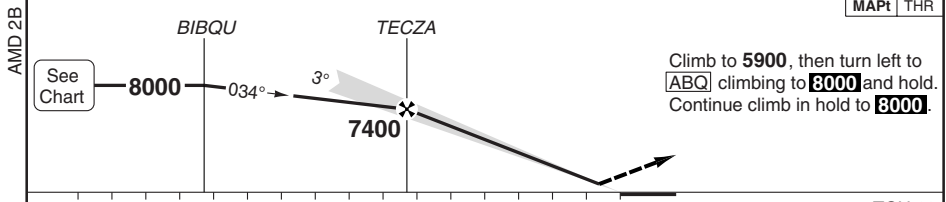
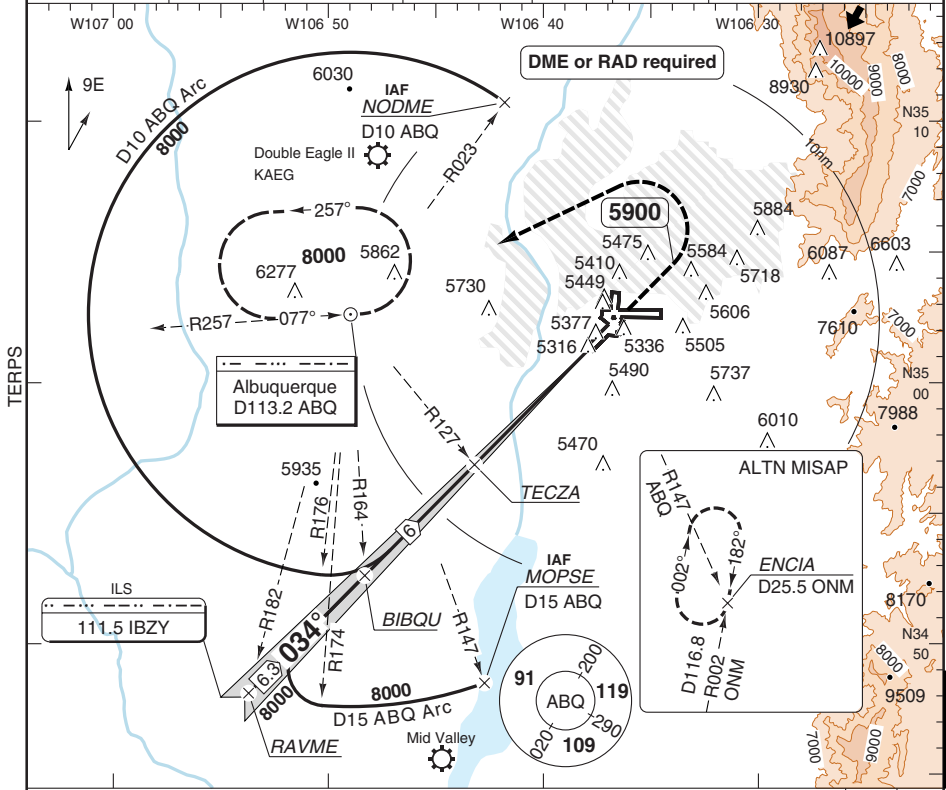


ILS RWY 03

Albuquerque APP 123.9 ① 127.4 ② 126.3	TWR 120.3 123.775	GND 121.9	ATIS (D) 118.0
---	-------------------------	--------------	-------------------

- ① S of V12, W or E of Manzano mountains
- ② On or N of V12, E or W of Sandia mountains

ILS 111.5 IBZY	FAT 034°	TDZ Elev 5312	AD Elev 5355	TL ATC	TA 18000
----------------	----------	---------------	--------------	--------	----------



nm		16	15	14	13	12	11	10	9	8	7	6	5	4	3	2	1	0	TCH 60
ACFT	ILS	LOC	Circling ⓐ																
			GS	80	100	120	140	160	LDA 3048x46 10000x150ft P 3° (62)										
C	5520 (200) 1800ft	5600 (288) 2400ft	5960 (600) 1½sm	ROD 3°	430	540	640	750	860										
				FAF +20s	7260	7220	7190	7150	7110										
D	5600 (288) 4000ft	6060 (700) 2½sm	6060 (700) 2½sm	+40s	7110	7040	6970	6900	6830										
				+60s	6970	6860	6760	6650	6540										
				FAF- 5600	4:12	3:22	2:48	2:24	2:06										
				FAF- MAP1	4:44	3:47	3:09	2:42	2:22										

ⓐ Authorisation required, otherwise 6360 (1000) 3sm

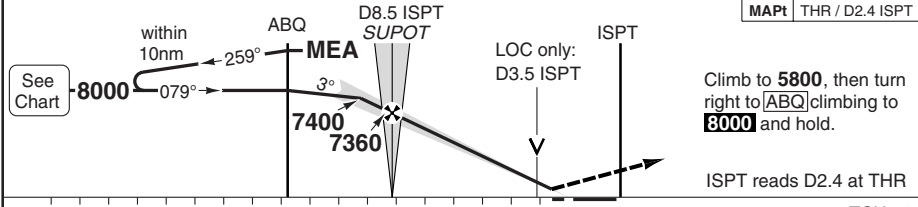
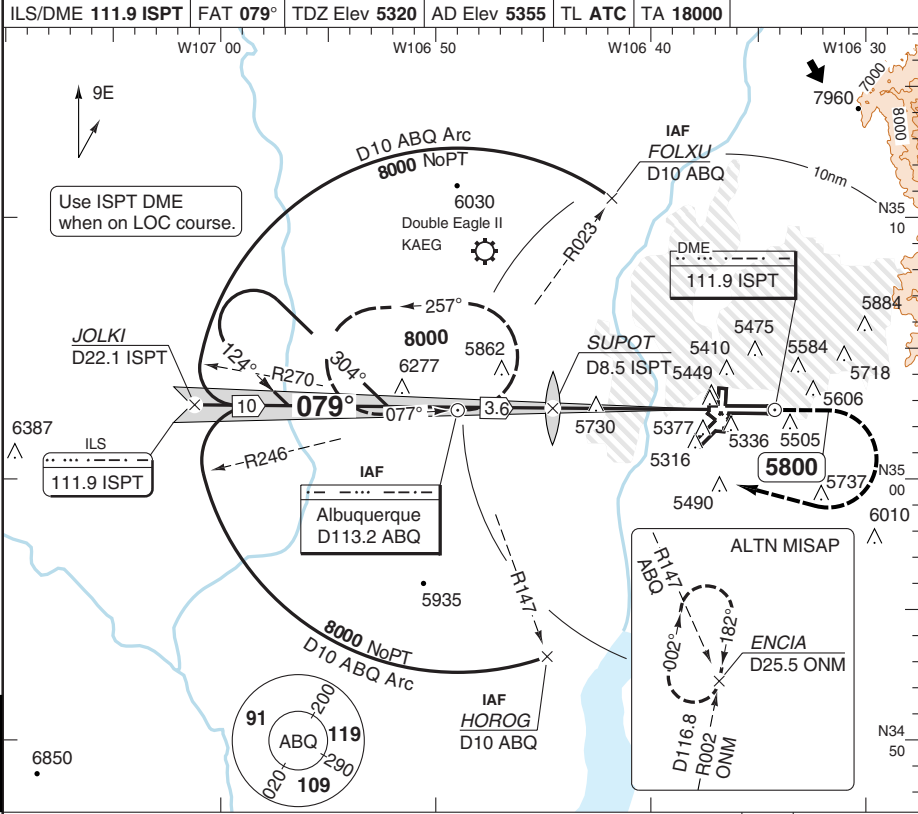
Change: New spec.

© Navtech - kabq01iap00

50 - 1

ILS RWY 08

Albuquerque APP 123.9 ① 127.4 ② 126.3	TWR 120.3 123.775	GND 121.9	ATIS (D) 118.0	① S of V12, W or E of Manzano mountains ② On or N of V12, E or W of Sandia mountains
ILS/DME 111.9 ISPT	FAT 079°	TDZ Elev 5320	AD Elev 5355	TL ATC TA 18000



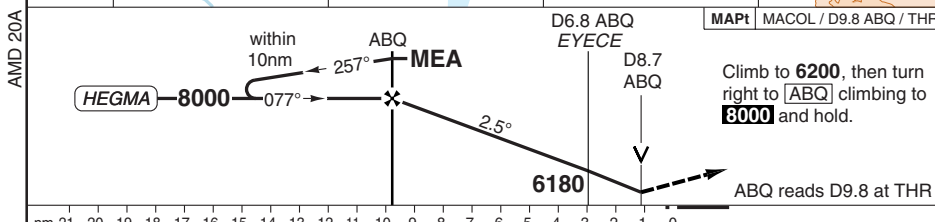
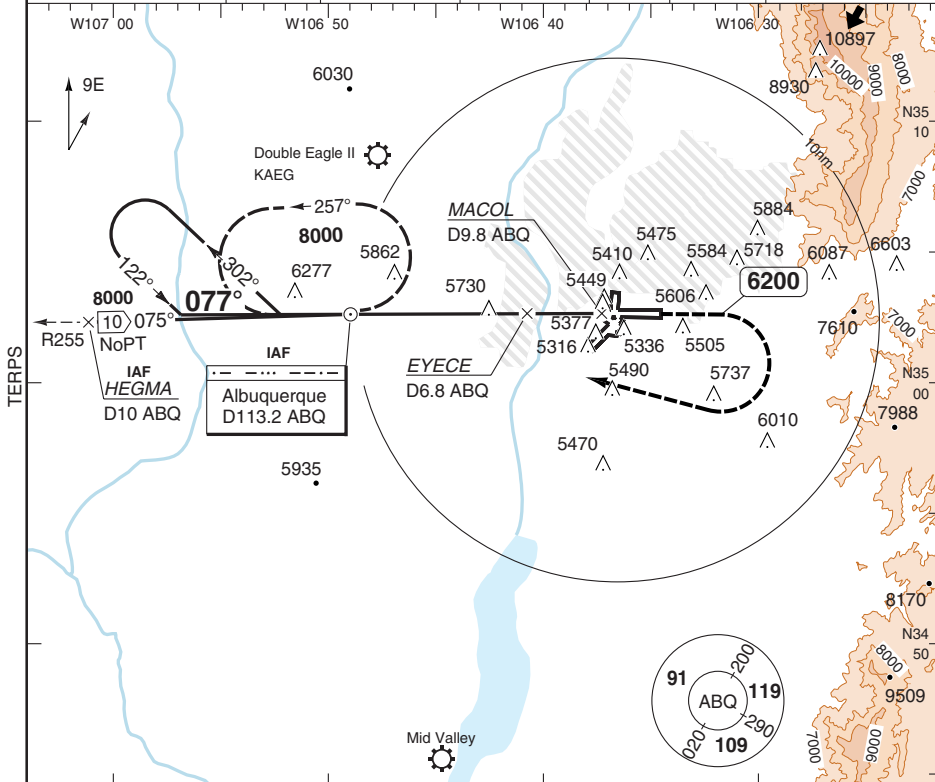
ACFT	ILS	LOC	Circling ①	① Authorisation required, otherwise 6360 (1000) 3sm	DME ISPT	3.1° ALT	LDA 3899x46 12793x150ft 3BAV 2.95°L (54)
C	5530 (202) 1800ft	5720 (400) 3500ft	5960 (600) 1½sm		10.5	8000	
D		5720 (400) 4000ft	6060 (700) 2½sm		9	7530	
					8	7200	
					7	6870	
					6	6550	
					5	6220	
					4	5900	
					3.5	5720	
GS	80	100	120	140	160		
ROD 3.1°	430	540	650	760	870		
FAF-MAPt	4:34	3:40	3:03	2:37	2:17		

© Navtech - kabq02aip00

Change: New spec.

VOR RWY 08

Albuquerque APP 123.9 ① 127.4 ② 126.3	TWR 120.3 123.775	GND 121.9	ATIS (D) 118.0	① S of V12, W or E of Manzano mountains ② On or N of V12, E or W of Sandia mountains
VOR/DME 113.2 ABQ	FAT 077°	TDZ Elev 5320	AD Elev 5355	TL ATC TA 18000



nm	21	20	19	18	17	16	15	14	13	12	11	10	9	8	7	6	5	4	3	2	1	0
ACFT	VOR+EYECE		VOR		Circling a b		Circling b		DME ABQ		2.5° ALT		LDA 3899x46 12793x150ft 3BAV 2.95°L (54)									
C	5700 (380) 3500ft		6180 (860) 2sm		5960 (600) 1½sm		6220 (860) 2½sm		0 8000		2 7460		MALSR									
D	5700 (380) 5000ft		6180 (860) 2¼sm		6060 (700) 2½sm		6220 (860) 2¾sm		4 6920		5 6660											
	GS	80	100	120	140	160	a After VOR+EYECE fix															
	ROD 2.5°	360	450	540	630	710	b Authorisation required, otherwise															
	FAF-MAPt	7:21	5:53	4:54	4:12	3:41	6360 (1000) 3sm															
							8.6 5700															

© Navtech - kabq03aip00

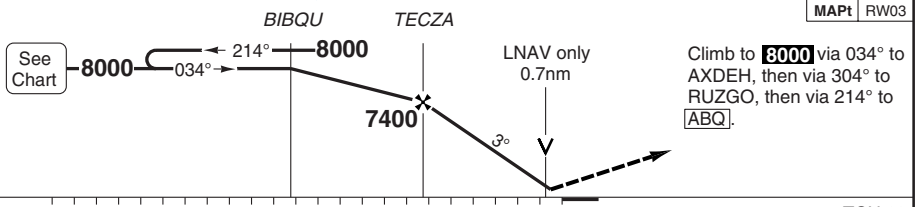
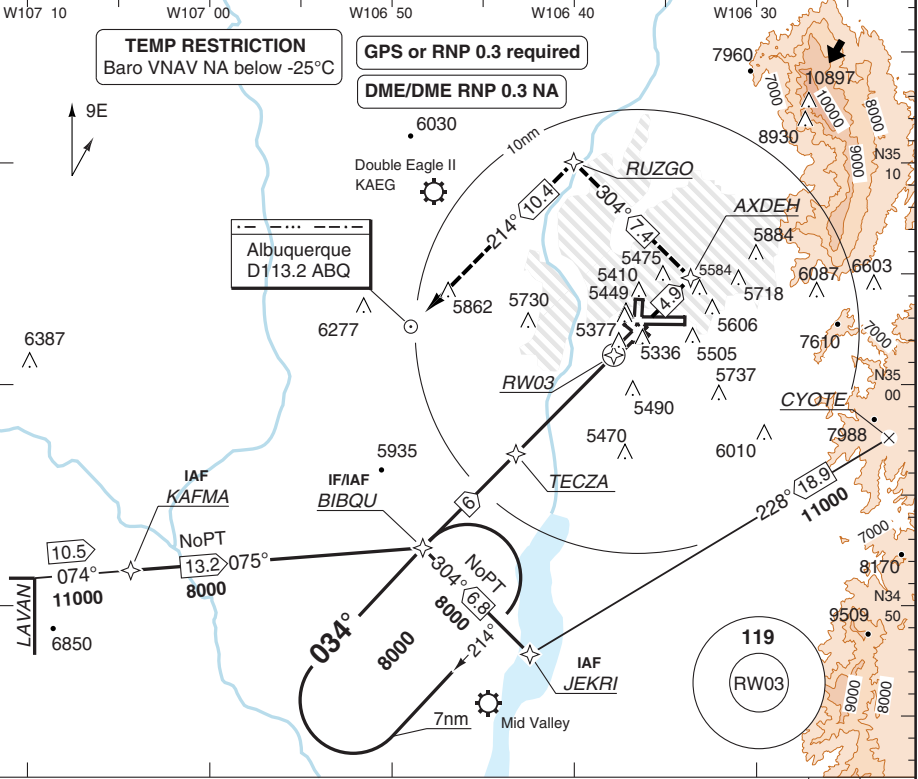
50 - 3

**RNAV (GPS) RWY 03**

Albuquerque APP <b>123.9 ①</b>	TWR <b>127.4 ②</b>	GND <b>120.3</b>	ATIS (D) <b>121.9</b>
<b>126.3</b>	<b>123.775</b>		

- ① S of V12, W or E of Manzano mountains
- ② On or N of V12, E or W of Sandia mountains

RNAV	FAT <b>034°</b>	TDZ Elev <b>5312</b>	AD Elev <b>5355</b>	TL ATC	TA <b>18000</b>
------	-----------------	----------------------	---------------------	--------	-----------------



nm	23	22	21	20	19	18	17	16	15	14	13	12	11	10	9	8	7	6	5	4	3	2	1	0	TCH 60	
ACFT																								THR 03	3° ALT	LDA 3048x46
C	5580 (268)	5620 (300)	5960 (600)																					8.2	8000	1000x150ft
	1/2sm	1/2sm	1 1/2sm																					6	7300	P 3° (62)
D	5580 (268)	5620 (300)	6060 (700)																					5	6980	
	3/4sm	1sm	2 1/2sm																					4	6660	
																								3	6340	
																								2	6010	
																								1	5690	
																								0.7	5600	
GS	80	100	120	140	160																					
ROD 3°	430	540	640	750	860																					

50 - 4  
ORIG A  
© Navtech - kabq04iap00

Change: New spec.



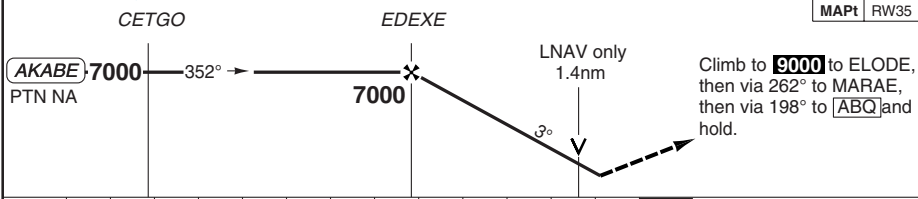
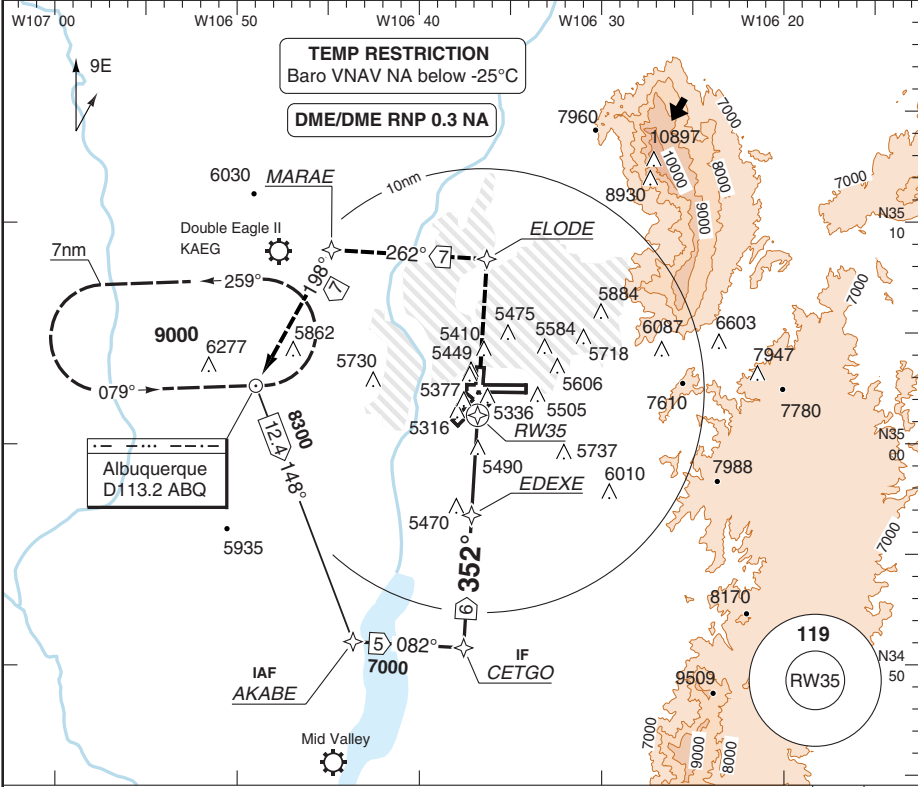


# RNAV (GPS) RWY 35

# INTL ALBUQUERQUE

Albuquerque APP 123.9 ① 127.4 ② 126.3	TWR 120.3 123.775	GND 121.9	ATIS (D) 118.0	① S of V12, W or E of Manzano mountains ② On or N of V12, E or W of Sandia mountains
---	-------------------------	--------------	-------------------	---

RNAV WAAS CH 40011 W35A	FAT 352°	TDZ Elev 5316	AD Elev 5355	TL ATC	TA 18000
-------------------------	----------	---------------	--------------	--------	----------



nm 13	12	11	10	9	8	7	6	5	4	3	2	1	0	TCH 55
-------	----	----	----	---	---	---	---	---	---	---	---	---	---	--------

ACFT	LNAV/VNAV	LNAV	Circling <sup>a</sup>
C	5700 (379) 1 1/4 sm	5780 (459) 1 3/8 sm	5960 (600) 1 1/2 sm
		5780 (459) 1 1/2 sm	6060 (700) 2 1/2 sm
D			

<sup>a</sup> Authorization required, otherwise  
6360 (1000) 3sm

THR 35	3° ALT	LDA 2777x46
5.1	7000	9110x150ft
5	6970	AV 3°L (55)
4	6650	
3	6330	
2	6010	
1.3	5800	

GS	80	100	120	140	160
ROD 3°	430	530	640	740	850

Change: New spec.

**THIS CHART IS A PART OF NAVIGRAPH NDAC AND IS INTENDED FOR FLIGHT SIMULATION USE ONLY**

© Navitech - kabq07iaip00

50 - 7

NALS  
Reverse side blank