

Airport information:

Country: Kenya

City: KISUMU

Coordinates: S 00 05.2, E034 43.7

Elevation: 3784

Customs: Customs: 0330-1630

Fuel: Jet A1, AVGAS

RFF: CAT 3

hours: 0330-18

Runways:

Runway 06

Takeoff length: 3300, Landing length: 3000

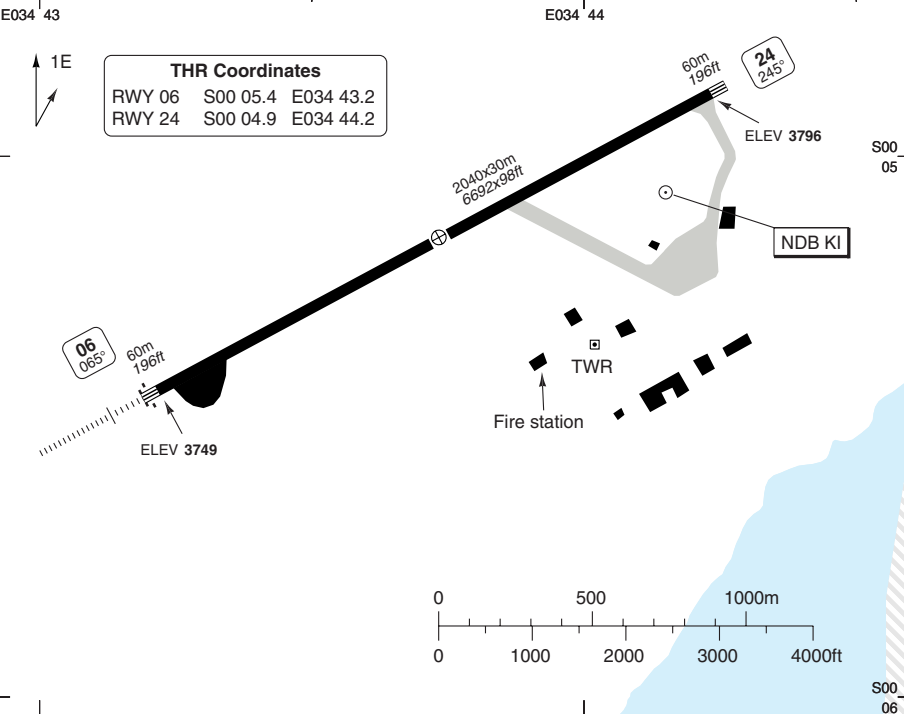
Runway 24

Takeoff length: 3300, Landing length: 3150

AERODROME

Kisumu APN 121.8	GND 121.6	TWR 118.8
----------------------------	---------------------	---------------------

AD Elev 3784	ARP: S00 05.2 E034 43.7	RFF: CAT 5	AD HR: 0330 - 1630
---------------------	-------------------------	------------	--------------------



RWY	Slope	TORA m/ft	LDA m/ft	ALS	REDL	Additional
06	+0.7	2040 / 6692	2040 / 6692	H-E ②	H ①	P 3°
24	-0.7	2040 / 6692	2040 / 6692	-	H ①	P 3°L/R

① White. ② 420.

EU OPS

TAKE OFF MINIMA

RWY	Facilities	RVR			
		A	B	C	D
06/24	RCL (day only) or RCL + REDL	400m			
	NIL (day only)	500m			

GENERAL INFORMATION

1. WARNING:

Occasional birds, livestock and unauthorized people on aerodrome.

2. CIRCUITS:

- 2.1 Right hand RWY 06.
- 2.2 Circuit height 5300.

3. RWY RESTRICTION:

- 3.1 180° turns on RWY are not permitted by ACFT over 12800kg AUW.
- 3.2 Goose necks - Emergency only.

4. TWY RESTRICTION:

TWY widths - 15m / 49ft.

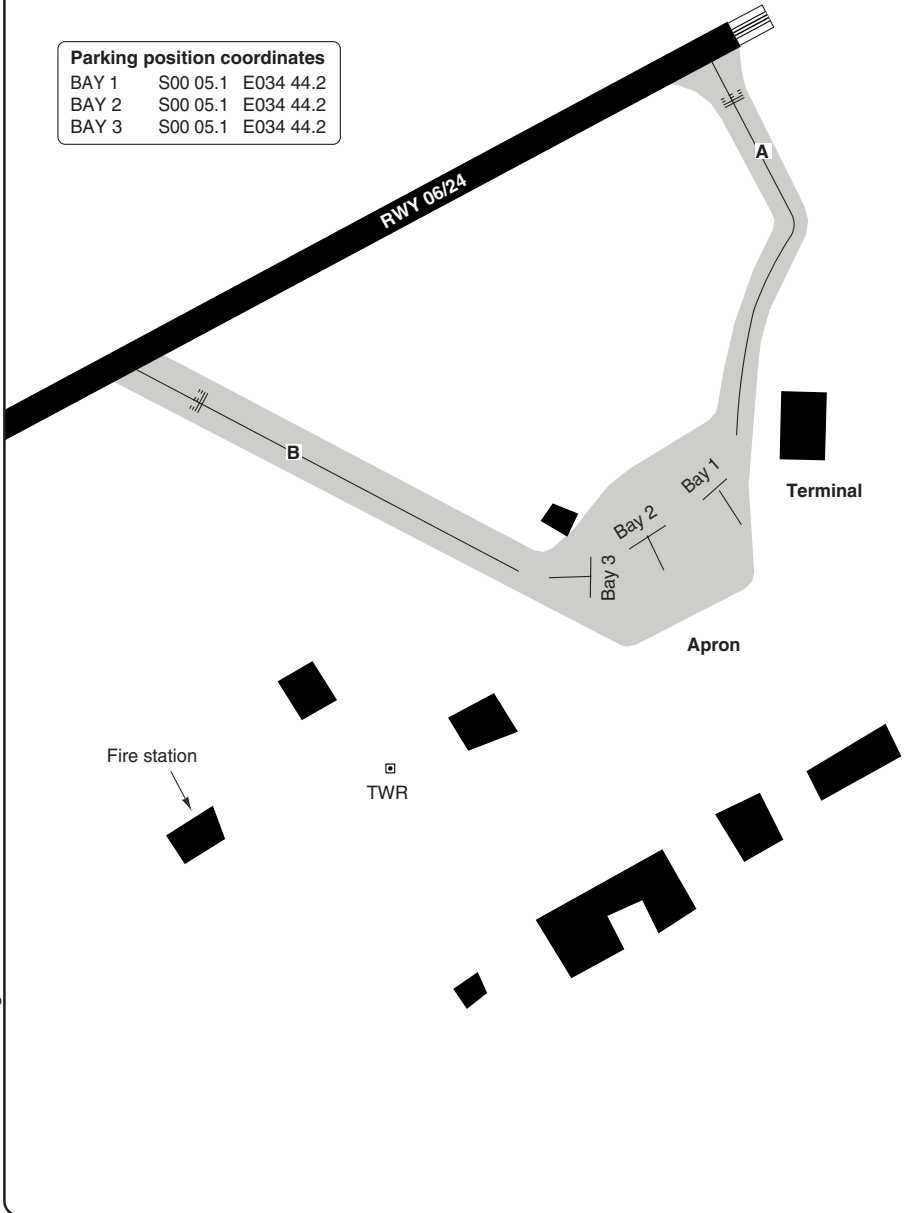
AERODROME GROUND

10 - 2

Kisumu APN	GND	TWR
121.8	121.6	118.8

TWY widths - 15m / 49ft.

Parking position coordinates		
BAY 1	S00 05.1	E034 44.2
BAY 2	S00 05.1	E034 44.2
BAY 3	S00 05.1	E034 44.2



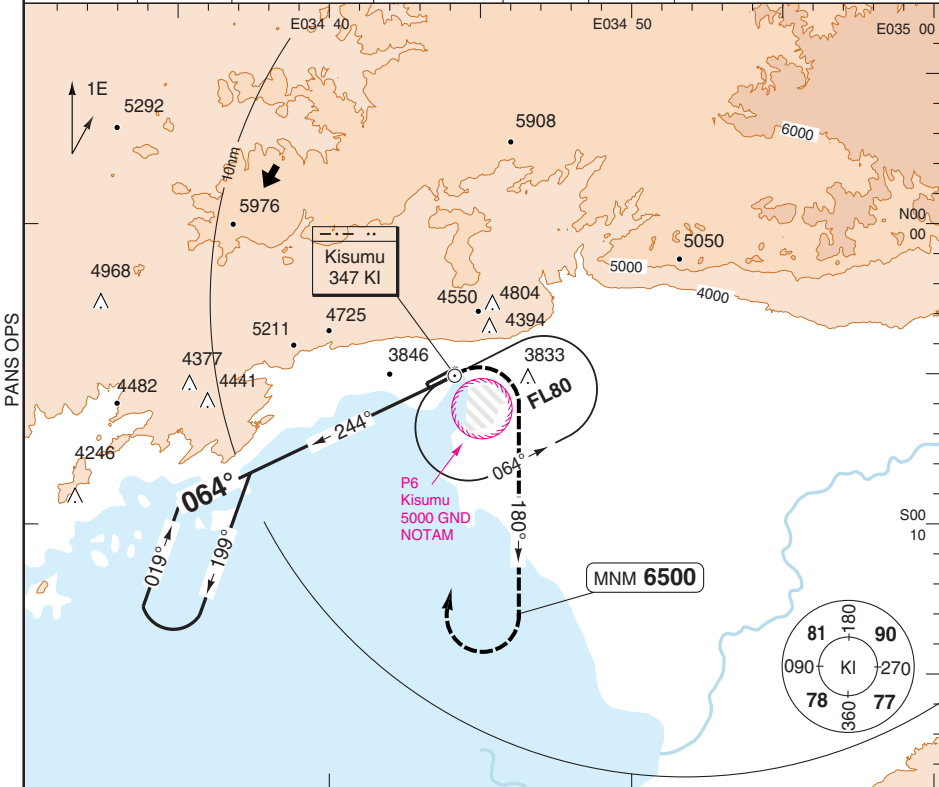
© Navitech - hkkf02laorg0

Change: New spec.

THIS CHART IS A PART OF NAVIGRAPH NDAC AND IS INTENDED FOR FLIGHT SIMULATION USE ONLY

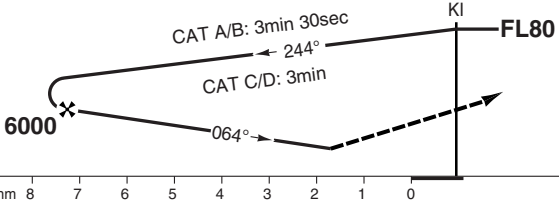
NDB RWY 06

Kisumu TWR 118.8	GND 121.6	APN 121.8				
NDB 347 KI		FAT 064°	THR Elev 3749	AD Elev 3784	TL FL80	TA 7000



50-1

MAP1 KI



Turn right at **KI** climbing on 180°, to **6500**. Turn right to **KI** climbing to **FL80** and hold.

ACFT	NDB	Circling
A	4780 (980) 4500m	5300 (1500) 4.5km
B		
C	5500 (1700) 4.5km	
D		

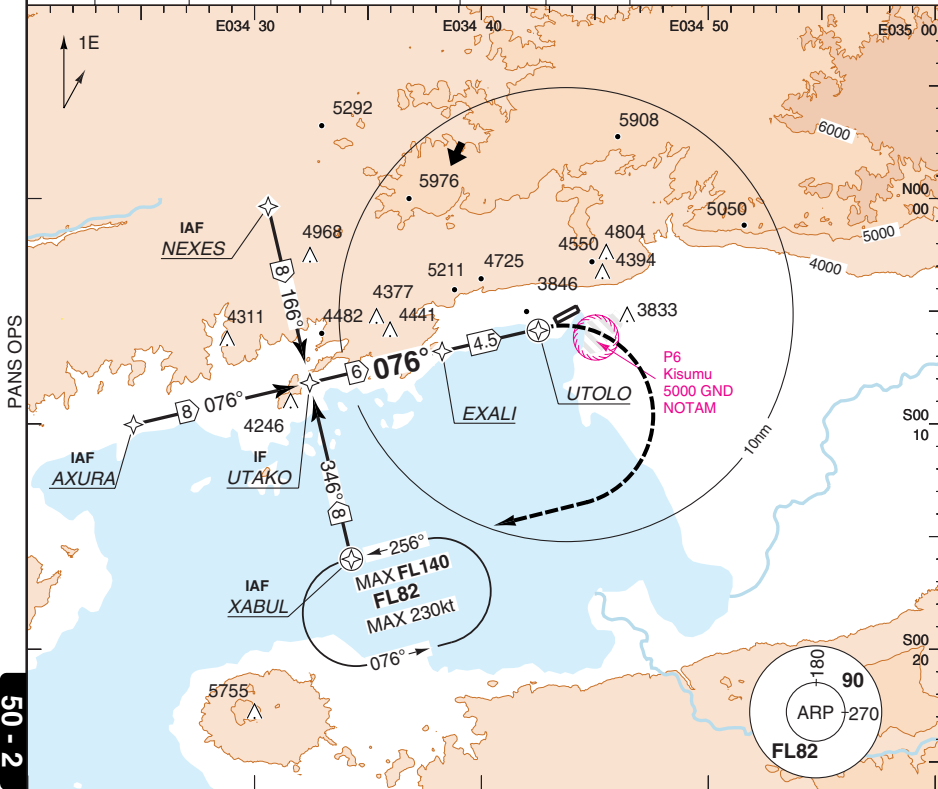


RNAV (GNSS) RWY 06

KISUMU

Kisumu TWR	GND	APN
118.8	121.6	121.8

RNAV	FAT 076°	THR Elev 3749	AD Elev 3784	TL FL80	TA 7000
------	----------	---------------	--------------	---------	---------



50 - 2

UTAKO

EXALI

MAPt UTOLO

See Chart

6300

5500

3.1°

076°

Turn right (not before MAPt) climbing to **FL632** to XABUL and hold.

ACFT	LNAV
A	4220 (466) 1500m
B	
C	4220 (466) 2200m
D	

Note: Circling NA

THR	3.1° ALT	LDA 2040x30 6692x98ft P 3°
08		
7.7	6300	
7	6090	
6	5770	
5	5440	
4	5110	
3	4790	
2	4460	
1.3	4220	

IALS

420m

© Navtech - hkk02iaip00

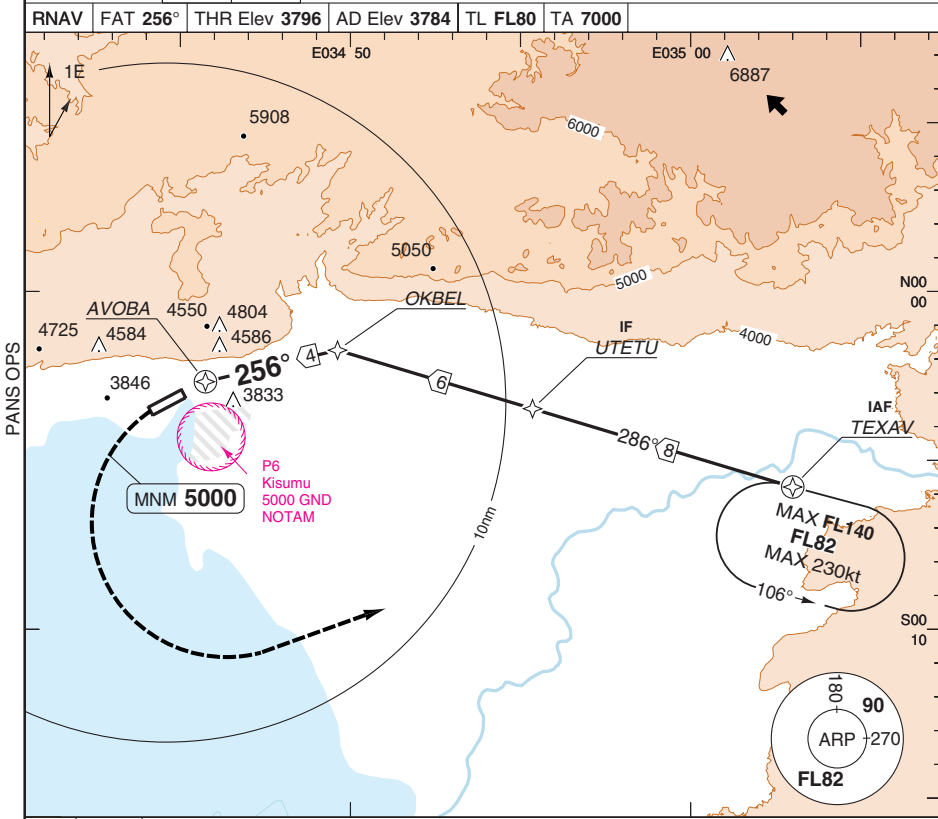
Change: New spec.

THIS CHART IS A PART OF NAVIGRAPH NDAC AND IS INTENDED FOR FLIGHT SIMULATION USE ONLY

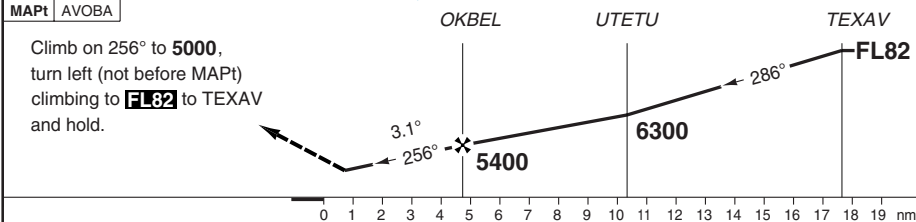
RNAV (GNSS) RWY 24

KISUMU

Kisumu TWR 118.8	GND 121.6	APN 121.8
RNAV	FAT 256°	THR Elev 3796
AD Elev 3784	TL FL80	TA 7000



50 - 3



ACFT	LNAV	Note: Circling NA	THR	3.1°	LDA 2040x30
A	4610 (815)		24	ALT	6692x98ft
B	1500m		4.7	5400	P 3° L/R
C	4610 (815)		4	5170	
D	2400m	3	4840		
		2.3	4610		

GS	80	100	120	140	160
ROD 3.1°	450	560	670	780	890

NALS
Reverse side blank

© Navtech - hkk03iaip00
EU OPS

Change: New spec.

THIS CHART IS A PART OF NAVIGRAPH NDAC AND IS INTENDED FOR FLIGHT SIMULATION USE ONLY

JAR-OPS Landing Minima

KISUMU

The following Minima is for Public Transport aircraft and conforms to JAR-OPS1 regulations.

STRAIGHT-IN APPROACH		C				D			
R/W	Procedure	DA/ MDA QNH ft	DH/ MDH QFE ft	RVR m	RVR No ALS m	DA/ MDA QNH ft	DH/ MDH QFE ft	RVR m	RVR No ALS m
06	NDB	4780	980	1800	2000	4780	980	2000	2000
06	RNAV (LNAV)	4220	470	1600	2000	4220	470	1800	2000
24	RNAV (LNAV)	4610	820	2000	N/A	4610	820	2000	N/A

Notes:

CIRCLING		C			D		
R/W	Procedure	MDA QNH ft	MDH QFE ft	Vis m	MDA QNH ft	MDH QFE ft	Vis m
06	NDB	5500	1700	2400	5500	1700	3600
06/24	RNAV procedures	N/A	N/A	N/A	N/A	N/A	N/A

Notes:

TAKE-OFF		C		D	
Runway	Facilities	RVR	Vis	RVR	Vis
06/24	REDL and/or RCL	400	-	400	-
06/24	Nil (Day only)	500	-	500	-

Notes:

JAR-OPS Landing Minima

KISUMU

The following Minima is for Public Transport aircraft and conforms to JAR-OPS1 regulations.

STRAIGHT-IN APPROACH		A				B			
R/W	Procedure	DA/ MDA QNH ft	DH/ MDH QFE ft	RVR m	RVR No ALS m	DA/ MDA QNH ft	DH/ MDH QFE ft	RVR m	RVR No ALS m
06	NDB	4780	980	1500	1500	4780	980	1500	1500
06	RNAV (LNAV)	4220	470	1400	1500	4220	470	1500	1500
24	RNAV (LNAV)	4610	820	1500	N/A	4610	820	1500	N/A

Notes:

CIRCLING		A			B		
R/W	Procedure	MDA QNH ft	MDH QFE ft	Vis m	MDA QNH ft	MDH QFE ft	Vis m
06	NDB	5300	1500	1500	5300	1500	1600
06/24	RNAV procedures	N/A	N/A	N/A	N/A	N/A	N/A

Notes:

TAKE-OFF		A		B	
Runway	Facilities	RVR	Vis	RVR	Vis
06/24	REDL and/or RCL	400	-	400	-
06/24	Nil (Day only)	500	-	500	-

Notes: