

# HKEL

---

## Airport information:

Country: Kenya

City: ELDORET INTL

Coordinates: N 00° 24.3', E035 14.3

Elevation: 6797

Customs: Customs

Fuel: Jet

RFF: CAT 6

hours: 0330-1800

## Runways:

Runway 08

Takeoff length: 3500, Landing length: 3500

Runway 26

Takeoff length: 3500, Landing length: 3500



# AERODROME

10 - 2

Eldoret APN 121.6	TWR 118.4	RAD 121.1
----------------------	--------------	--------------

Cargo terminal

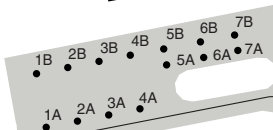
Passenger terminal

TWR

Fire station

**Parking position coordinates**

1A-3A	N00 24.2 E035 13.4
4A	Not published
5A-7A	N00 24.3 E035 13.5
1B-3B	N00 24.3 E035 13.4
4B-7B	N00 24.3 E035 13.4



**WARNING**  
Chart drawn using best available sources.  
Use with caution.

**GENERAL INFORMATION**

**1. CAUTION**

1.1 Bird hazard.

**2. CIRCUITS**

2.1 RWY 08 right hand circuit.  
RWY 26 left hand circuit

2.2 Circuit heights - **8000** and **9000**, depending on QNH

**3. TAXI**

3.1 ACFT to request push back and taxi clearance while on the Apron from Apron Control on 121.6.

**4. PARKING**

4.1 For parking instructions contact Apron Control on 121.6.

4.2 Parking on Apron under marshaller guidance.

4.3 ACFT parked nose-in should ensure that their handling agents can supply Tow-bar push back operations.



NDB RWY 08

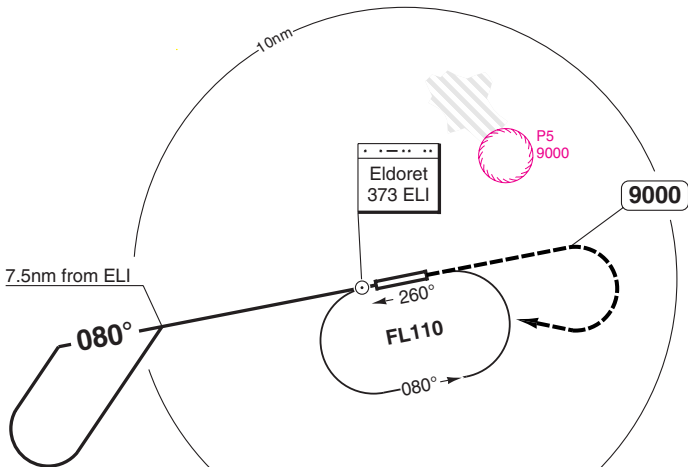
Eldoret APP  
119.4

RAD  
121.1

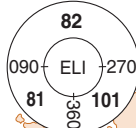
TWR  
118.4

NDB 373 ELI | FAT 080° | THR Elev 6838 | AD Elev 6941 | TL 110 | TA 10000

E035 00 | E035 10 | E035 20



**WARNING**  
Chart drawn using best available sources.  
Use with caution.



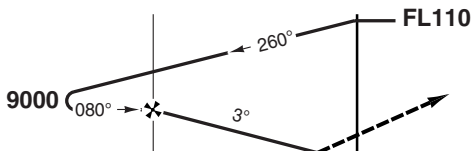
PANS OPS

50 - 2

7.5nm from ELI

ELI

MAPt ELI



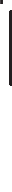
Climb on 080° to 9000, turn right to ELI and hold at **FL110**.

nm 15 14 13 12 11 10 9 8 7 6 5 4 3 2 1 0

ACFT	NDB	NDB <sup>a</sup>	Circling	Circling <sup>a</sup>
A	7280 (442) 1400m	7280 (442) 1600m	7380 (530) 1.5km	7380 (530) 1.6km
B			7440 (590) 1.6km	7440 (590) 1.6km
C	7280 (442) 1800m	7280 (442) 1800m	7540 (690) 2.4km	7540 (690) 2.4km
D			7630 (780) 3.6km	7630 (780) 3.6km

<sup>a</sup> Non CDFA.

LDA 3500x45  
11482x147ft  
P 3°



BALS

© Navtech - hkel02iaip00  
EU OPS

Change: New spec

**THIS CHART IS A PART OF NAVIGRAPH NDAC AND IS INTENDED FOR FLIGHT SIMULATION USE ONLY**