

Airport information:

Country: Egypt

City: ALEXANDRIA INTL

Coordinates: N 31° 10.9', E029 56.8

Elevation: -6

Customs: Customs

Fuel: Jet A1

RFF: CAT 7

hours: H24.

Runways:

Runway 04

Takeoff length: 2201, Landing length: 2201

Runway 18

Takeoff length: 1801, Landing length: NA

Runway 22

Takeoff length: 2201, Landing length: 2201

Runway 36

Takeoff length: NA, Landing length: 1801

AERODROME

Alex TWR
120.3

AD Elev -5 | ARP: N31 10.9 E029 56.8 | RFF: CAT 7 | AD HR: H24

E029 56

E029 57

E029 58



ELEV -5 | 18 176° | Fire Station

VIP Apron | Apron | TWR

1801x30m / 5909x98ft
2201x455m / 7221x1481ft

32 021°

VOR/DME AXD

N31 11

| THR Coordinates | | | |
|-----------------|----------|-----------|--|
| RWY 04 | N31 10.5 | E029 56.3 | |
| RWY 22 | N31 11.3 | E029 57.3 | |
| RWY 18 | N31 11.6 | E029 56.9 | |
| RWY 36 | N31 10.7 | E029 56.9 | |

04 041°

ELEV -8

36 356°

ELEV -9



| RWY | Slope | TORA m/ft | LDA m/ft | ALS | REDL | Additional |
|-----|-------|-------------|-------------|-------|------|---------------|
| 04 | 0 | 2201 / 7221 | 2201 / 7221 | H-E ① | H | P 3° L/R (46) |
| 22 | 0 | 2201 / 7221 | 2201 / 7221 | H-D | H | P 3° L/R (46) |
| 18 | 0 | 1801 / 5909 | NA | - | H | - |
| 36 | 0 | NA | 1801 / 5908 | - | H | - |

① 420m.

EU OPS

TAKE OFF MINIMA

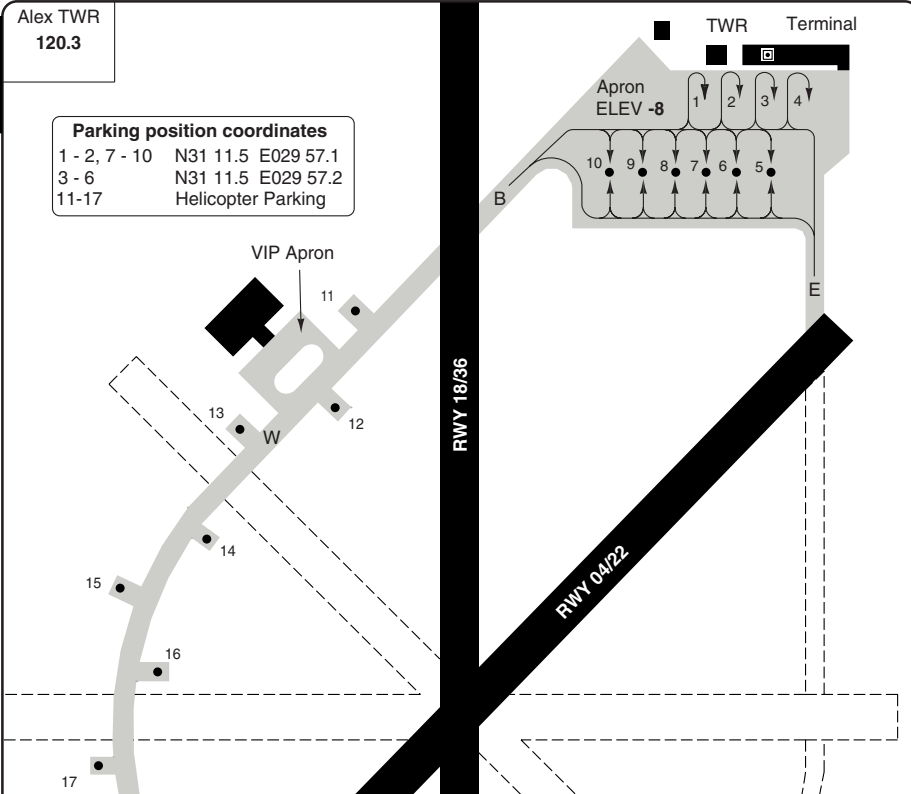
| RWY | Facilities | RVR | | | |
|-----|------------------------------|------|---|---|---|
| | | A | B | C | D |
| All | RCL (day only) or RCL + REDL | 400m | | | |
| | NIL (day only) | 500m | | | |

AERODROME

10 - 2

Alex TWR
120.3

| Parking position coordinates | | |
|------------------------------|--------------------|-----------|
| 1 - 2, 7 - 10 | N31 11.5 | E029 57.1 |
| 3 - 6 | N31 11.5 | E029 57.2 |
| 11-17 | Helicopter Parking | |



GENERAL INFORMATION

1. RWY RESTRICTION

RWY 18: TKOF only.
RWY 36: LDG only.

2. TWY RESTRICTION

TWY W are assigned for helicopters.
TWY W width 18m/59ft.

3. INBD PROC

- 3.1 TFC from North: Maintain **FL100** to VOR AXD. Descend in HP to MNM holding ALT, then follow ATC intructions.
- 3.2 TFC from South: Do not descend below **FL100** until after passing MENKU (A1/A727).

4. TAXI

- 4.1 Marshall avbl O/R.
- 4.2 Arriving aircraft will be allocated a stand by Tower. 'FOLLOW ME' vehicles can be requested.

5. ATC CLR

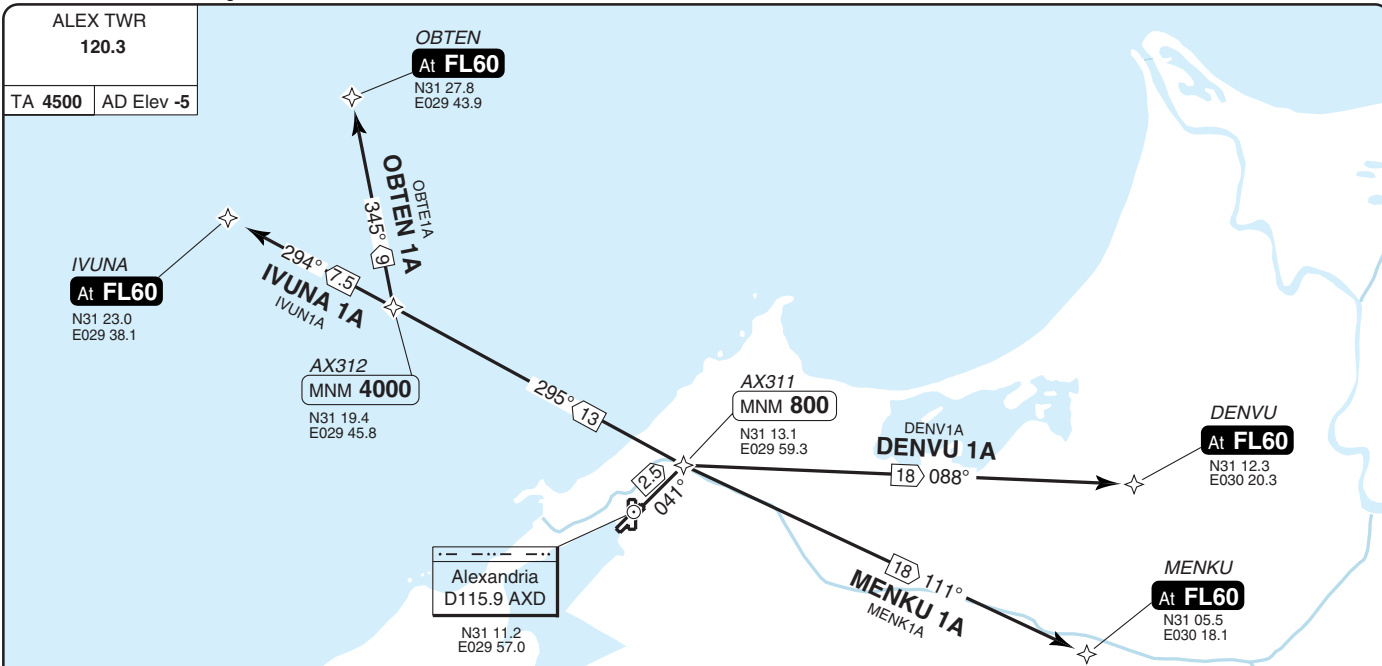
REQ AWY CLR before Taxing.

6. OUTBD PROC - Northbound

- RWY 04: Turn right and climb on R180 AXD and cross AXD MNM **FL100**.
- RWY 22: Turn left and climb on R180 AXD and cross AXD MNM **FL100**.
- RWY 18: Climb on R180 AXD and Cross AXD MNM **FL100**.
- RWY 36: TKOF NA

7. NAV RESTRICTION

DME on radial 303 / **FL100** usable up to 57NM and on radial 084 / **FL100** usable up to 56NM.



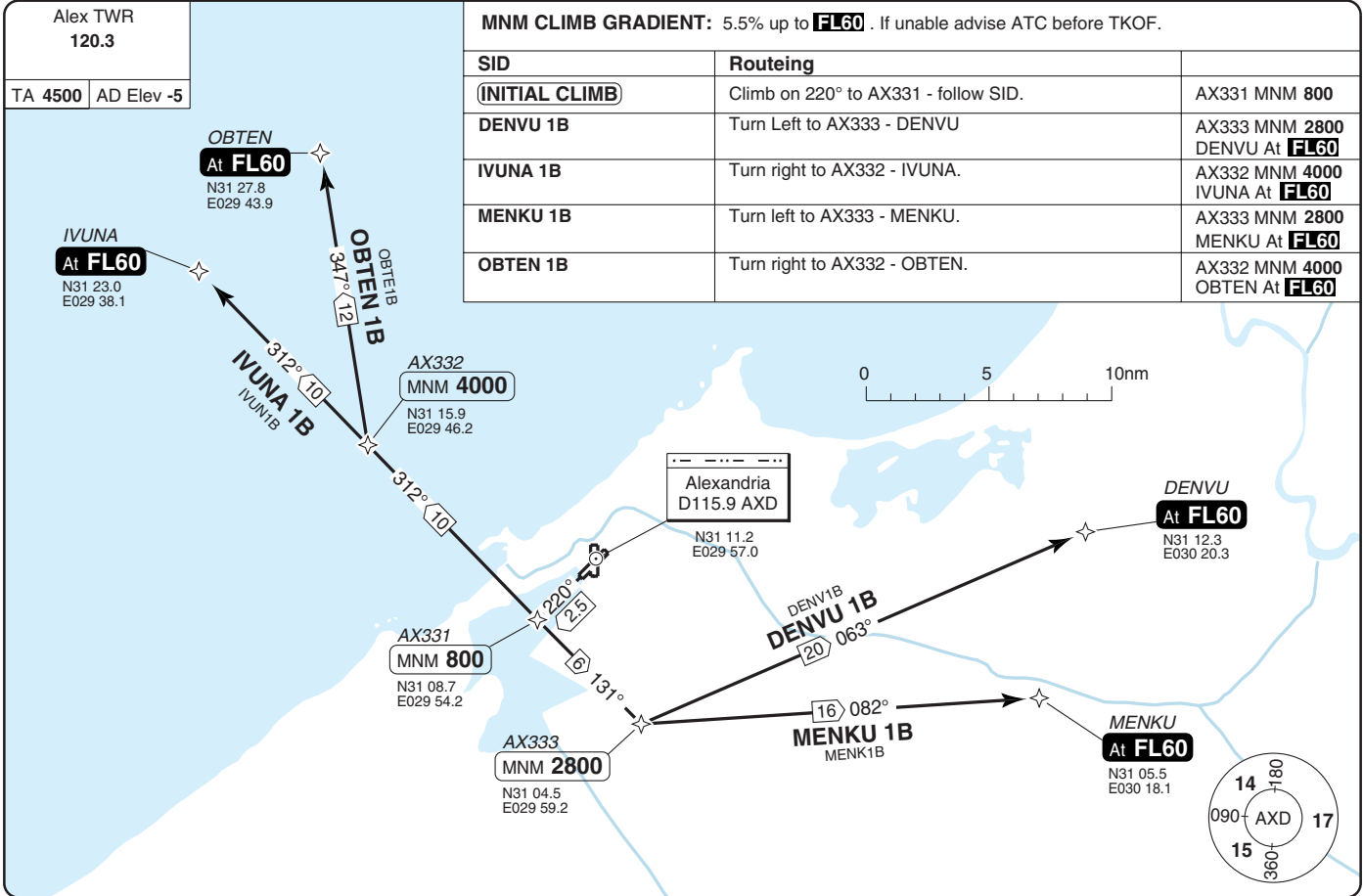
MNM CLIMB GRADIENT: 5.5% up to **FL60**. If unable advise ATC before TKOF.

| SID | Routeing | Altitudes |
|----------------------|-------------------------------------|--|
| INITIAL CLIMB | Climb on 041° to AX311 - follow SID | AX311 MNM 800 |
| DENVU 1A | DENVU. | DENVU At FL60 |
| IVUNA 1A | AX312 - IVUNA. | AX312 MNM 4000 IVUNA At FL60 |
| MENKU 1A | MENKU. | MENKU At FL60 |
| OBTEN 1A | AX312 - OBTEN. | AX312 MNM 4000 OBTEN At FL60 |

ALEX TWR
120.3

TA 4500 AD Elev -5

SID Rwy 04 ENAV GNS: VOR/DME
 30 - 1 | 09 MAR 11
 INTL ALEXANDRIA
 Egypt - HEAX / ALY



STAR RWY 04 **RNAV** GNSS , VOR/DME

INTL ALEXANDRIA

Alex TWR
120.3

TL **60** AD Elev **-5**

OBTEN
MNM **FL80**
N31 27.8
E029 43.9

Alexandria
D115.9 AXD
N31 11.2
E029 57.0

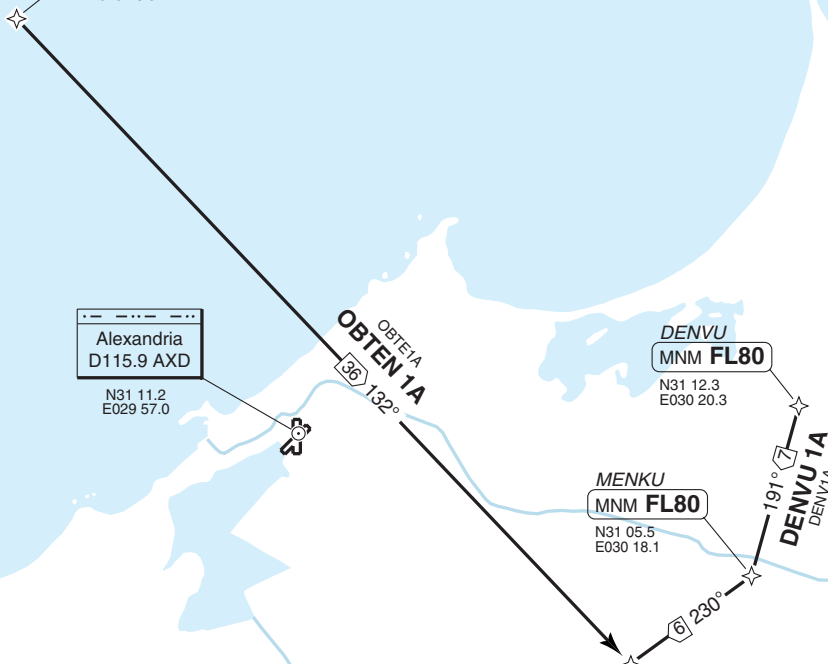
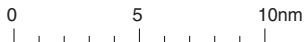
DENVU
MNM **FL80**
N31 12.3
E030 20.3

MENKU
MNM **FL80**
N31 05.5
E030 18.1

AX211
MNM **FL70**
N31 02.0
E030 12.5

AX212
MNM **FL60**
N30 56.3
E030 03.7

058°
FL60
MAX 180kt
←238°



40 - 1

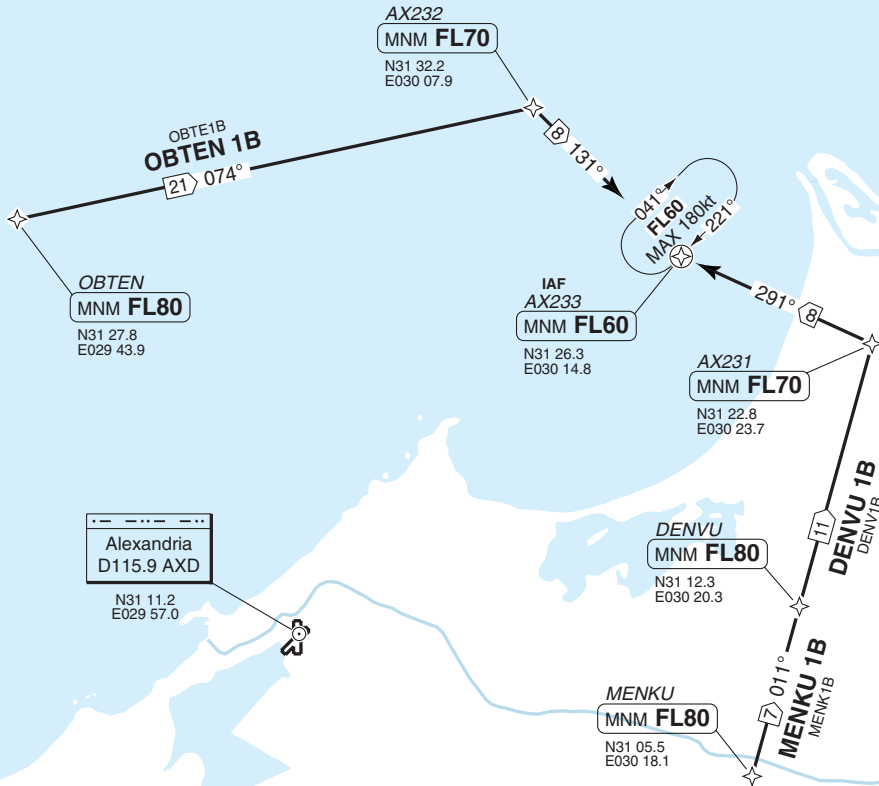
STAR RWY 22 **RNAV** GNSS, VOR/DME

INTL ALEXANDRIA

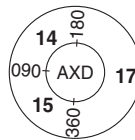
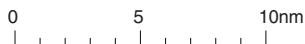
Alex TWR
120.3

TL 60 AD Elev -5

40 - 2



Alexandria
D115.9 AXD
N31 11.2
E029 57.0

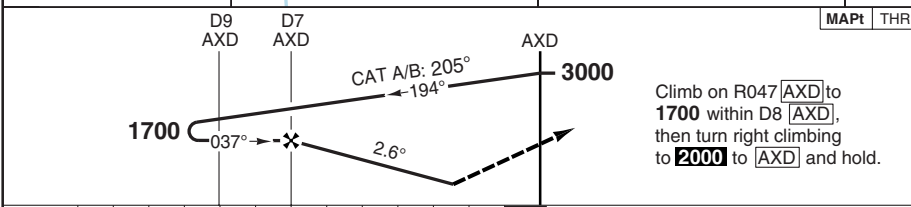
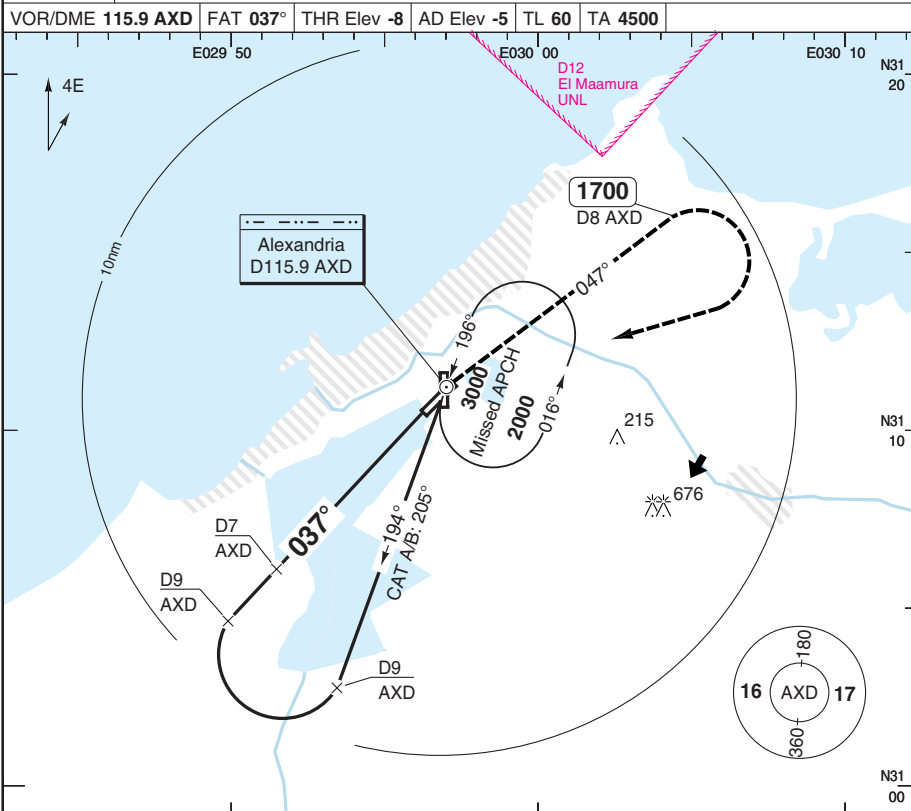


VOR RWY 04 VOR/DME

INTL ALEXANDRIA

Alex TWR
120.3

VOR/DME 115.9 AXD FAT 037° THR Elev -8 AD Elev -5 TL 60 TA 4500



Climb on R047 [AXD] to 1700 within D8 [AXD], then turn right climbing to 2000 to [AXD] and hold.

nm 12 11 10 9 8 7 6 5 4 3 2 1 0

| ACFT | VOR+DME | Circling |
|------|--------------------|--------------------|
| A | 560 (565) 1500m | 740 (745) 1.5km |
| B | | 740 (745) 1.6km |
| C | 560 (565) 2200m | 840 (845) 2.4km |
| D | | 840 (845) 3.6km |

| DME AXD | 2.6° ALT |
|---------|----------|
| 7 | 1700 |
| 6 | 1440 |
| 5 | 1160 |
| 4 | 880 |
| 3 | 610 |
| 2.8 | 560 |

LDA 2201x45
7221x148ft
P 3°/L/R (46)

| GS | 80 | 100 | 120 | 140 | 160 |
|----------|-----|-----|-----|-----|-----|
| ROD 2.6° | 370 | 470 | 560 | 650 | 740 |

420

50 - 1

© Navtech - heax01iaip00

IALS

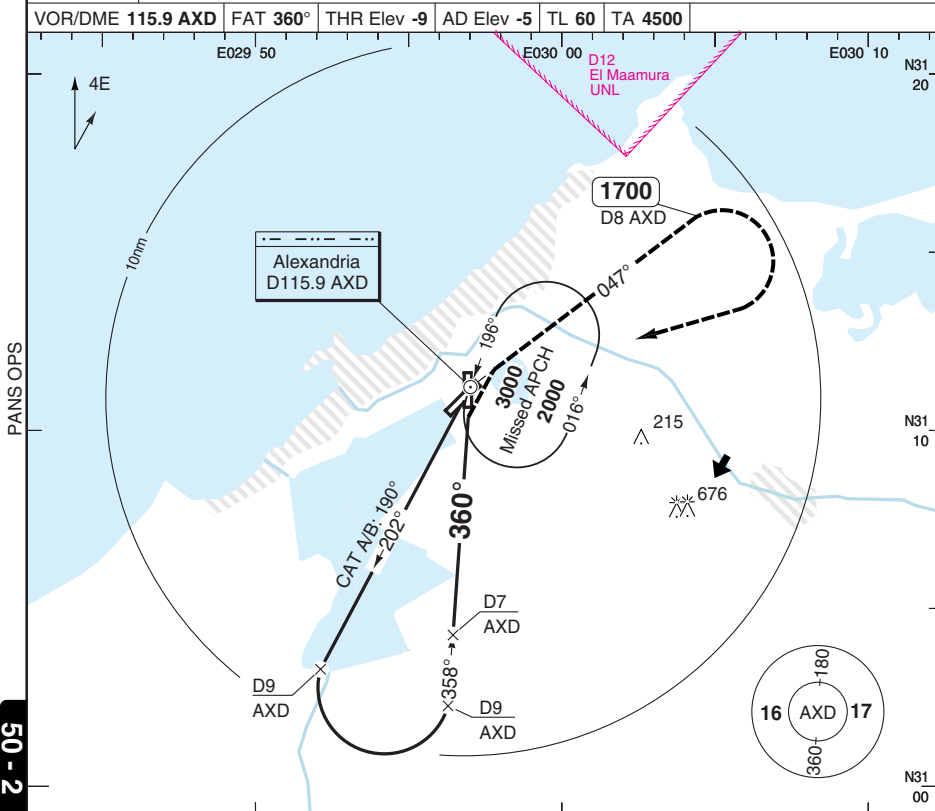
Change: New spec.

THIS CHART IS A PART OF NAVGRAPH NDAC AND IS INTENDED FOR FLIGHT SIMULATION USE ONLY

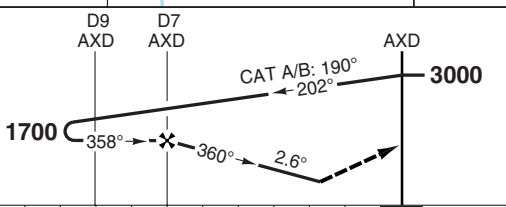
VOR RWY 36 VOR/DME

INTL ALEXANDRIA

Alex TWR 120.3
 VOR/DME 115.9 AXD FAT 360° THR Elev -9 AD Elev -5 TL 60 TA 4500



50 - 2



Climb on R047 [AXD] to 1700 within D8 [AXD], then turn right climbing to 2000 to [AXD] and hold.

| nm | 12 | 11 | 10 | 9 | 8 | 7 | 6 | 5 | 4 | 3 | 2 | 1 | 0 |
|----------|-----------|-------------|-----------|-----|-----|---|---|---|---|---|---|---|---|
| ACFT | VOR+DME | | Circling | | | | | | | | | | |
| A | 560 (565) | 740 (745) | 1.5km | | | | | | | | | | |
| B | 1500m | 740 (745) | 1.6km | | | | | | | | | | |
| C | 560 (565) | 840 (845) | 2.4km | | | | | | | | | | |
| D | 2400m | 840 (845) | 3.6km | | | | | | | | | | |
| GS | 80 | 100 | 120 | 140 | 160 | | | | | | | | |
| ROD 3.0° | 430 | 540 | 640 | 750 | 850 | | | | | | | | |
| DME AXD | 3.0° ALT | LDA 1801x30 | 5908x98ft | | | | | | | | | | |
| 5.8 | 1700 | | | | | | | | | | | | |
| 5 | 1460 | | | | | | | | | | | | |
| 4 | 1140 | | | | | | | | | | | | |
| 3 | 820 | | | | | | | | | | | | |
| 2.2 | 560 | | | | | | | | | | | | |

© Navtech - heax02lap00 EU OPS

NALS

Change: New spec.

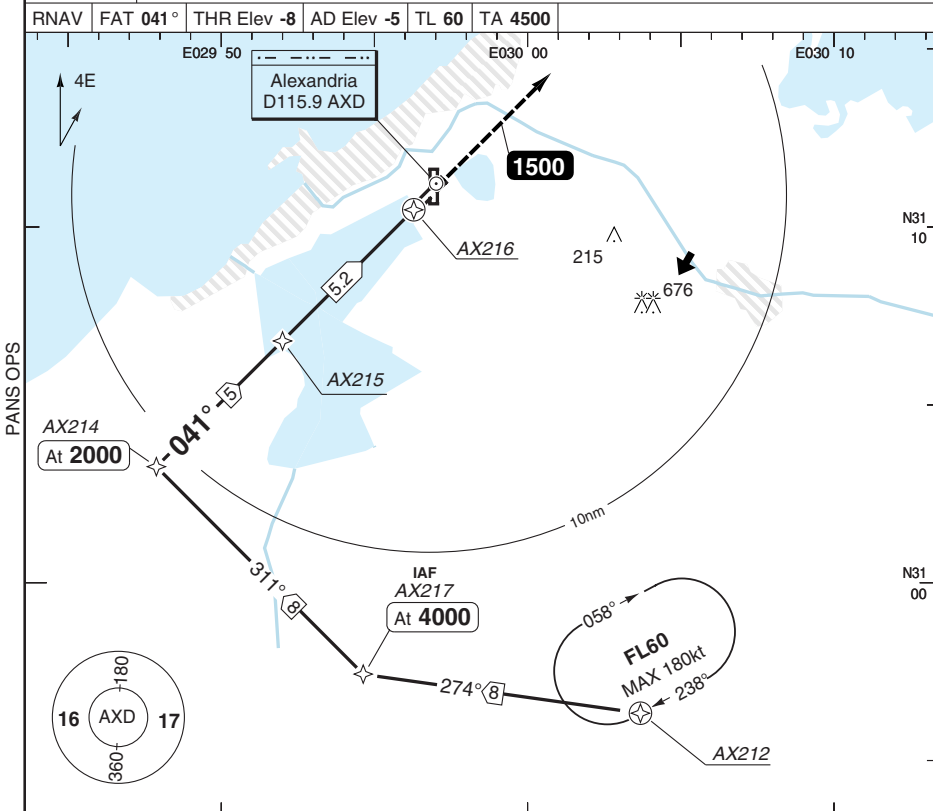
THIS CHART IS A PART OF NAVGRAPH NDAC AND IS INTENDED FOR FLIGHT SIMULATION USE ONLY

RNAV (GNSS) RWY 04 VOR/DME

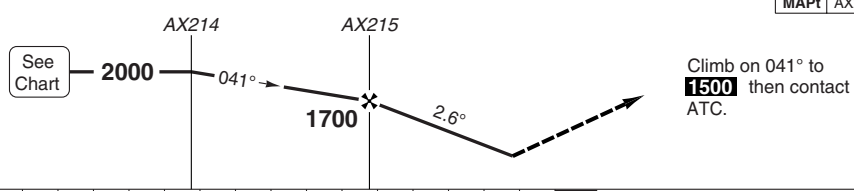
INTL ALEXANDRIA

Alex TWR
120.3

RNAV FAT **041°** THR Elev **-8** AD Elev **-5** TL **60** TA **4500**



MAP1 AX216



| | | | | | | | | |
|----------|------------------|-------------|-----|-------------------|-----|-----|-------------|--------------|
| ACFT | | LNAV | | Note: Circling NA | | THR | 3.0° | LDA 2201x45 |
| A | 560 (565) | 1500m | | | | 04 | ALT | 7221x148ft |
| B | | | | | | 5.2 | 1700 | P 3°L/R (46) |
| C | 560 (565) | | | | | 4 | 1330 | |
| D | 2200m | | | | | 3 | 1010 | |
| | | | | | | 2 | 690 | |
| | | | | | | 1.6 | 560 | |
| GS | 80 | 100 | 120 | 140 | 160 | | | |
| ROD 3.0° | 430 | 540 | 640 | 750 | 860 | | | |
| | | | | | | | | IALS |
| | | | | | | | | 420 |

© Navtech - heax03iap00

50 - 3

RNAV (GNSS) RWY 22 VOR/DME

INTL ALEXANDRIA

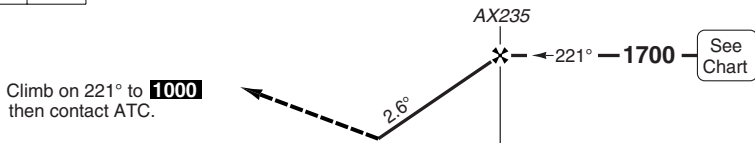
Alex TWR
120.3

RNAV FAT 221° THR Elev -9 AD Elev -5 TL 60 TA 4500

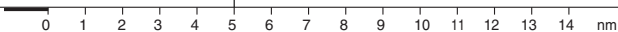


50 - 4

MAPt AX236



Climb on 221° to **1000**
then contact ATC.



| ACFT | LNAV |
|------|---------------------------|
| A | 560 (565) 1500m |
| B | |
| C | 560 (565) 1900m |
| D | |

Note: Circling NA

| THR | 3.0° ALT |
|-----|-------------|
| 22 | |
| 5.2 | 1700 |
| 4 | 1330 |
| 3 | 1010 |
| 2 | 690 |
| 1.6 | 560 |

LDA 2201x45
7221x148ft
P 3°/L/R (46)



| | | | | | |
|----------|-----|-----|-----|-----|-----|
| GS | 80 | 100 | 120 | 140 | 160 |
| ROD 3.0° | 430 | 540 | 640 | 750 | 860 |

Change: New spec.

JAR-OPS Landing Minima

INTL ALEXANDRIA

The following Minima is for Public Transport aircraft and conforms to JAR-OPS1 regulations.

| STRAIGHT-IN APPROACH | | C | | | | D | | | |
|----------------------|---------------------------|-------------------------|-------------------------|----------|-----------------------|-------------------------|-------------------------|----------|-----------------------|
| R/W | Procedure | DA/ MDA QNH ft | DH/ MDH QFE ft | RVR m | RVR No ALS m | DA/ MDA QNH ft | DH/ MDH QFE ft | RVR m | RVR No ALS m |
| 04 | VOR/DME (1) | 560 | 570 | 1600 | 2000 | 560 | 570 | 1800 | 2000 |
| 04 | RNAV (VOR/DME or GNSS)(1) | 560 | 570 | 1600 | 2000 | 560 | 570 | 1800 | 2000 |
| 22 | RNAV (VOR/DME or GNSS)(1) | 560 | 570 | 1200 | 2000 | 560 | 570 | 1600 | 2000 |
| 36 | VOR/DME (1) | 560 | 570 | 2000 | N/A | 560 | 570 | 2000 | N/A |

Notes:

(1) Procedure based on aerodrome elevation.

| CIRCLING | | C | | | D | | |
|----------|-------------|------------------|------------------|----------|------------------|------------------|----------|
| R/W | Procedure | MDA QNH ft | MDH QFE ft | Vis m | MDA QNH ft | MDH QFE ft | Vis m |
| 04, 36 | VOR/DME (1) | 840 | 850 | 2400 | 840 | 850 | 3600 |

Notes:

(1) RNAV procs N/A.

| TAKE-OFF | | C | | D | |
|----------|-----------------|-----|-----|-----|-----|
| Runway | Facilities | RVR | Vis | RVR | Vis |
| All | REDL and/or RCL | 400 | - | 400 | - |
| All | Nil (Day only) | 500 | - | 500 | - |

Notes:

JAR-OPS Landing Minima

INTL ALEXANDRIA

The following Minima is for Public Transport aircraft and conforms to JAR-OPS1 regulations.

| STRAIGHT-IN APPROACH | | A | | | | B | | | |
|----------------------|---------------------------|-------------------------|-------------------------|----------|-----------------------|-------------------------|-------------------------|----------|-----------------------|
| R/W | Procedure | DA/ MDA QNH ft | DH/ MDH QFE ft | RVR m | RVR No ALS m | DA/ MDA QNH ft | DH/ MDH QFE ft | RVR m | RVR No ALS m |
| 04 | VOR/DME (1) | 560 | 570 | 1400 | 1500 | 560 | 570 | 1500 | 1500 |
| 04 | RNAV (VOR/DME or GNSS)(1) | 560 | 570 | 1400 | 1500 | 560 | 570 | 1500 | 1500 |
| 22 | RNAV (VOR/DME or GNSS)(1) | 560 | 570 | 1000 | 1500 | 560 | 570 | 1200 | 1500 |
| 36 | VOR/DME (1) | 560 | 570 | 1500 | N/A | 560 | 570 | 1500 | N/A |

Notes:

(1) Procedure based on aerodrome elevation.

| CIRCLING | | A | | | B | | |
|----------|-------------|------------------|------------------|----------|------------------|------------------|----------|
| R/W | Procedure | MDA QNH ft | MDH QFE ft | Vis m | MDA QNH ft | MDH QFE ft | Vis m |
| 04, 36 | VOR/DME (1) | 740 | 750 | 1500 | 740 | 750 | 1600 |

Notes:

(1) RNAV procs N/A.

| TAKE-OFF | | A | | B | |
|----------|-----------------|-----|-----|-----|-----|
| Runway | Facilities | RVR | Vis | RVR | Vis |
| All | REDL and/or RCL | 400 | - | 400 | - |
| All | Nil (Day only) | 500 | - | 500 | - |

Notes:

HELICOPTER

INTL ALEXANDRIA

The following Minima is for Public Transport Helicopters and conforms to JAR-OPS3 regulations.

STRAIGHT-IN APPROACH

| R/W | Procedure | DA/ MDA QNH ft | DH/ MDH QFE ft | Full >=720 RVR m | Inter 420-719 RVR m | Basic < 420 RVR m | No ALS RVR m |
|-----|---------------------------|-------------------------|-------------------------|---------------------------|------------------------------|----------------------------|--------------------|
| 04 | VOR/DME (1) | 560 | 570 | N/A | 1000 | 1000 | 1000 |
| 04 | RNAV (VOR/DME or GNSS)(1) | 560 | 570 | N/A | 1000 | 1000 | 1000 |
| 22 | RNAV (VOR/DME or GNSS)(1) | 560 | 570 | 1000 | 1000 | 1000 | 1000 |
| 36 | VOR/DME (1) | 560 | 570 | N/A | N/A | N/A | 1000 |

Notes:

(1) Procedure based on aerodrome elevation.

CIRCLING

| R/W | Procedures | MDA QNH ft | MDH QFE ft | Vis m |
|--------|-------------|------------------|------------------|----------|
| 04, 36 | VOR/DME (1) | 740 | 750 | 800 |

Notes:

(1) RNAV procs N/A.