

## Airport information:

Country: Guinea

City: CONAKRY

Coordinates: N 09° 34.6', W 013° 36.7'

Elevation: 72

Customs: : H24

Fuel: Jet A1

RFF: CAT 9

hours: H24.

## Runways:

Runway 06

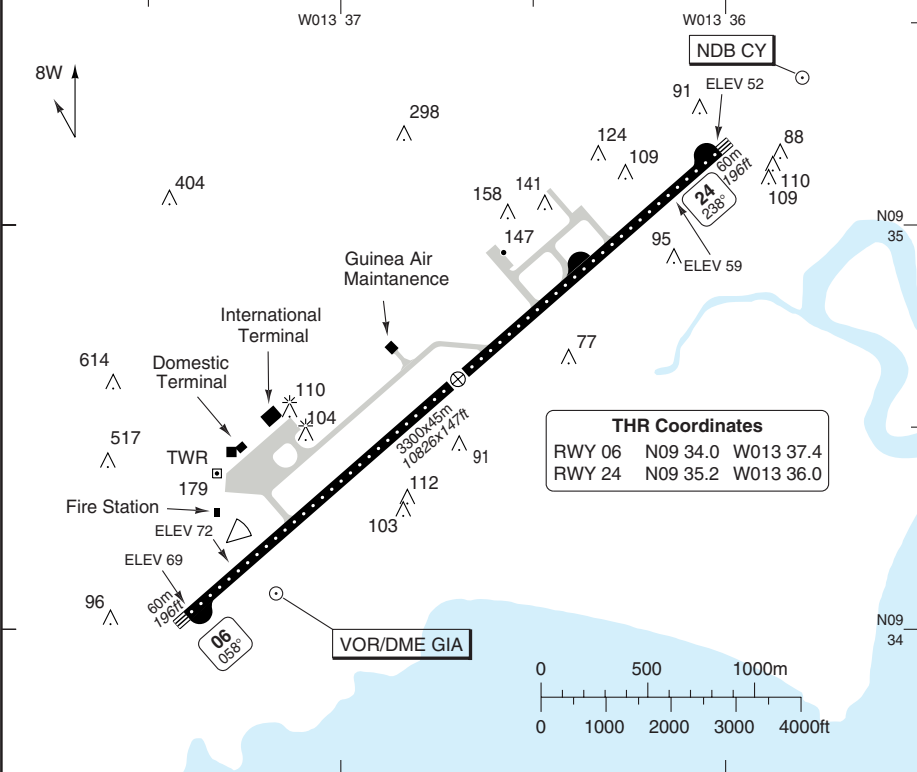
Takeoff length: 3300, Landing length: 3300

Runway 24

Takeoff length: 3300, Landing length: 3300

Conakry GND 129.1	TWR 118.7	APP 119.7	
----------------------	--------------	--------------	--

AD Elev 72	ARP: N09 34.6 W013 36.7	RFF: CAT 9	AD HR: H24
------------	-------------------------	------------	------------



RWY	Slope	TORA m/ft	LDA m/ft	ALS	REDL	RCLL	Additional
06	-0.2	3300 / 10826	3300 / 10826	-	-	avbl ①	-
24	+0.2	3300 / 10826	3300 / 10826	-	-	avbl ①	-

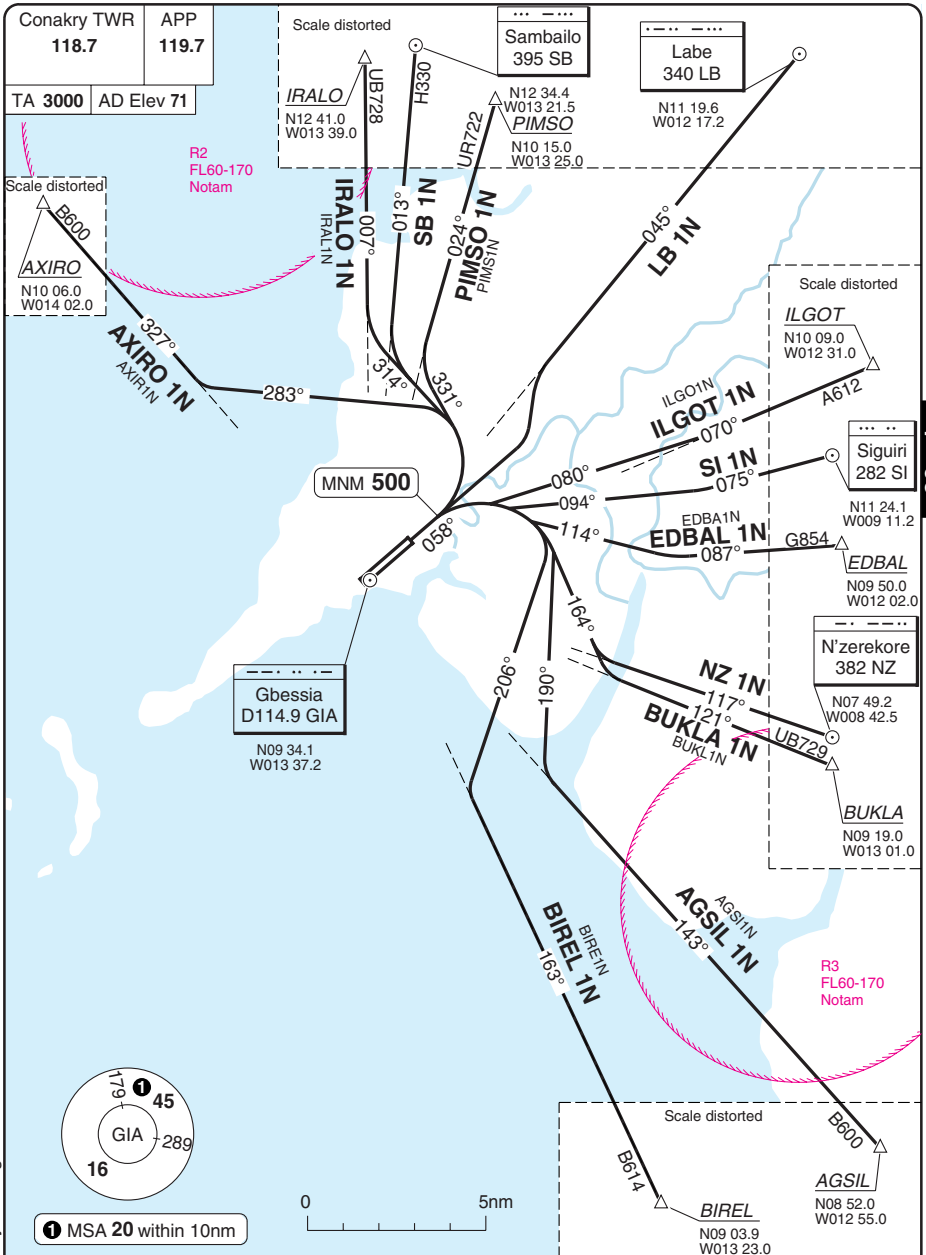
① White.

**EU OPS TAKE OFF MINIMA**

RWY	Facilities	RVR			
		A	B	C	D
06/24	RCL (day only) or RCL + REDL	400m			
	NIL (day only)	500m			

# SID RWY 06

# Gbessia CONAKRY



30 - 1

**MNM CLIMB GRADIENT:** LB 1N - 5% to 4000.

SID	Routing
<b>ALL ROUTES</b> (Except LB 1N)	Climb on 058° to 500 - turn left or right - follow SID as instructed by ATC.
<b>LB 1N</b>	Climb on 058° - turn left - LB.

Change: MT

**THIS CHART IS A PART OF NAVIGRAPH NDAC AND IS INTENDED FOR FLIGHT SIMULATION USE ONLY**

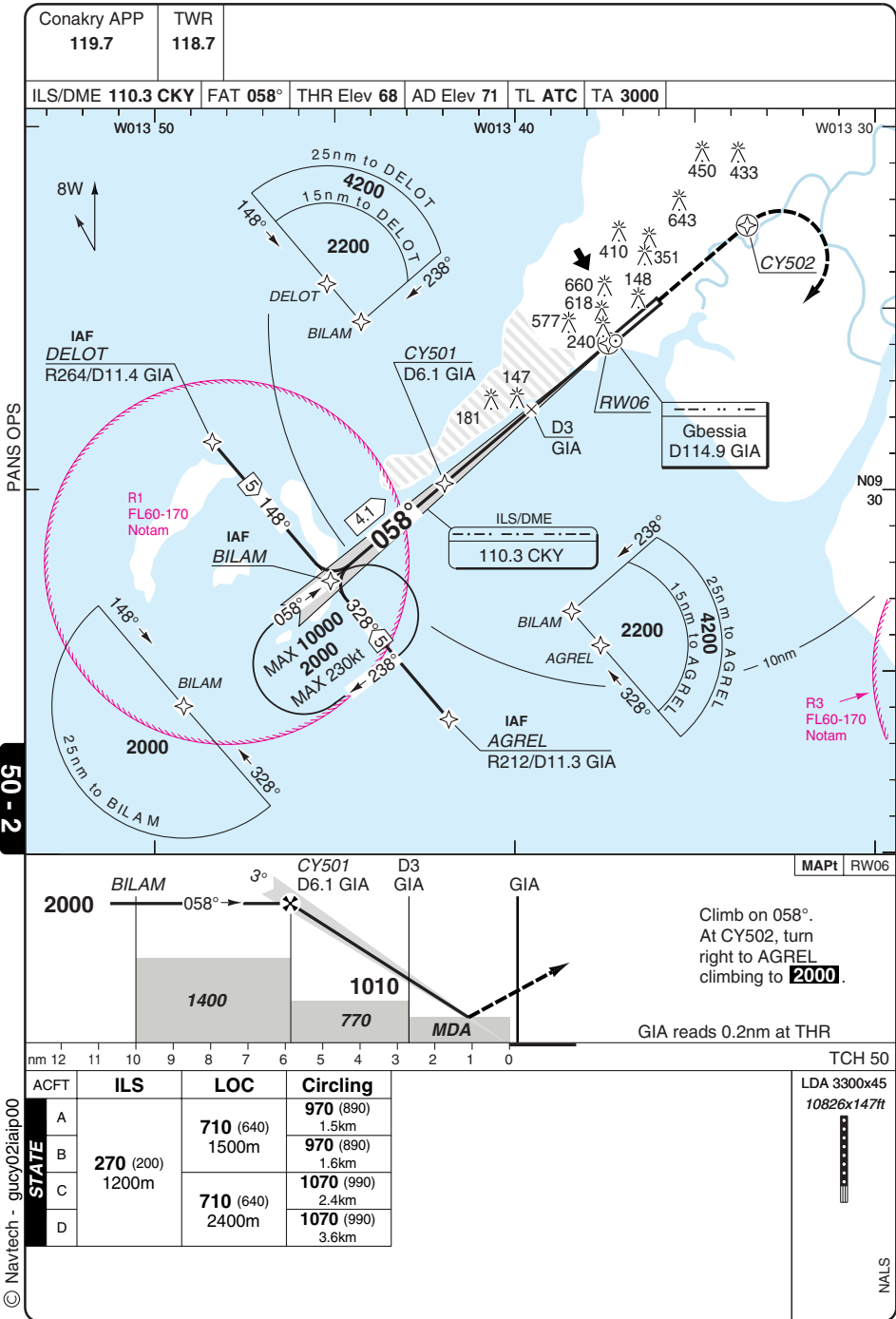






ILS RWY 06 RNAV Transition

Gbessia CONAKRY



© Navtech - gucy02aip00

Change: New chart

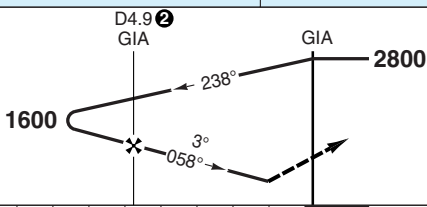
**THIS CHART IS A PART OF NAVIGRAPH NDAC AND IS INTENDED FOR FLIGHT SIMULATION USE ONLY**

VOR Y RWY 06

Gbessia CONAKRY

Conakry APP 119.7	TWR 118.7
----------------------	--------------

VOR/DME 114.9 GIA	FAT 058°	THR Elev 68	AD Elev 71	TL ATC	TA 3000
-------------------	----------	-------------	------------	--------	---------



Climb on R058 [GIA]. At 1600 turn right to [GIA] climbing to 2800 or follow ATC instructions. Do not turn before MAPt.

nm	10	9	8	7	6	5	4	3	2	1	0	
ACFT	<b>VOR+DME a</b>		<b>VOR</b>		<b>VOR d</b>		<b>Circling a b</b>		<b>Circling c</b>		<b>Circling d</b>	
A	870 (800)	1600m	920 (850)	3800m	920 (850)	4000m	970 (890)	1.6km	970 (890)	3.8km	970 (890)	4.0km
B	870 (800)	2000m			920 (850)	4000m	970 (890)	2.0km	970 (890)	3.8km	970 (890)	4.0km
C	870 (800)	2800m	920 (850)	4200m	920 (850)	4200m	1070 (990)	2.8km	1070 (990)	3.8km	1070 (990)	4.2km
D	870 (800)	3500m			920 (850)	4200m	1070 (990)	3.6km	1070 (990)	3.8km	1070 (990)	4.2km
STATE	GS	80	100	120	140	160	<b>a</b> GPS equipment required <b>d</b> Non CDFA <b>b</b> VOR+DME only <b>c</b> After VOR (CDFA)					
ROD 3.0°	430	530	640	740	850							

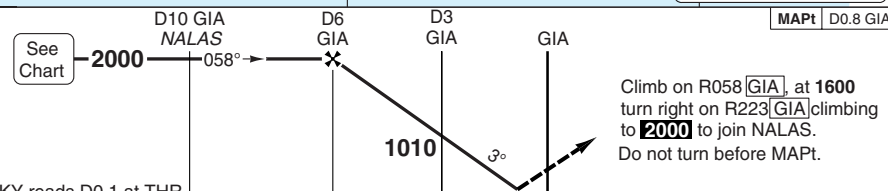
DME GIA	3.0° ALT	LDA 3300x45
4.9	1600	10826x147ft
4	1320	
3	1010	
2.6	870	

VOR Z RWY 06

Gbessia CONAKRY

Conakry APP 119.7	TWR 118.7
----------------------	--------------

VOR/DME 114.9 GIA	FAT 058°	THR Elev 68	AD Elev 71	TL ATC	TA 3000
-------------------	----------	-------------	------------	--------	---------



CKY reads D0.1 at THR

ACFT	VOR+DME	Circling	DME GIA	3.0° ALT	LDA 3300x45 10826x147ft
A	770 (700) 1600m	970 (890) 1.6km	6.1	2000	
B	770 (700) 2000m	970 (890) 2.0km	5	1650	
C	770 (700) 2800m	1070 (990) 2.8km	4	1330	
D	770 (700) 3500m	1070 (990) 3.6km	3	1020	
			2.2	770	

GS	80	100	120	140	160
ROD 3.0°	430	540	640	750	860

© Navtech - gucy04iap00

NALS

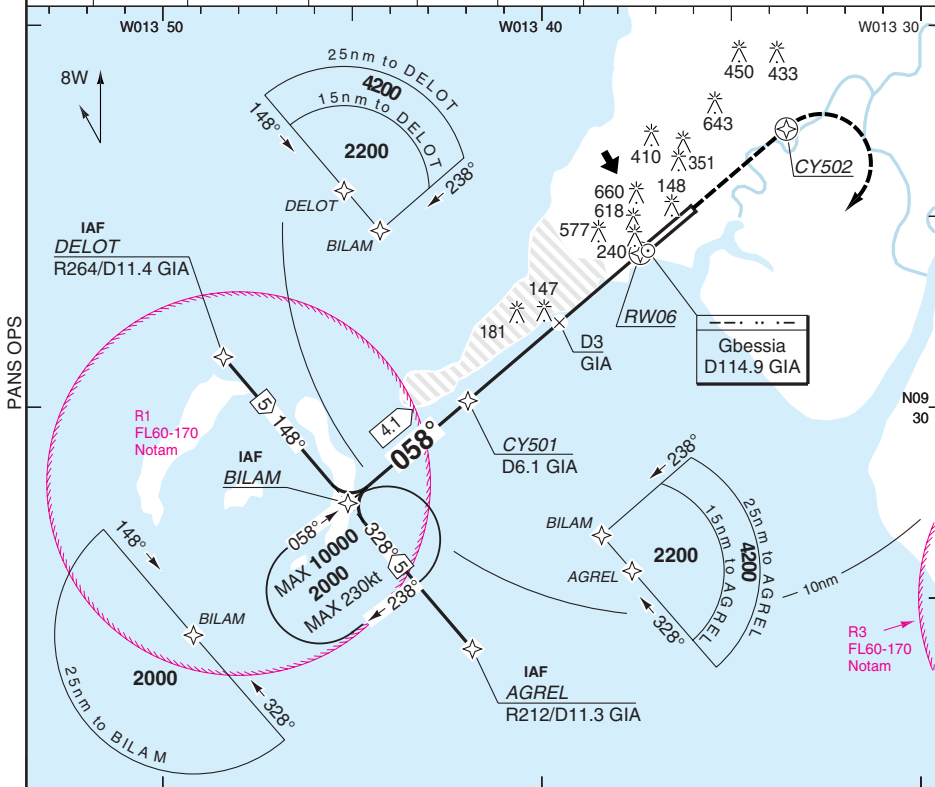
# RNAV (GNSS) RWY 06

Gbessia CONAKRY

Conakry APP  
119.7

TWR  
118.7

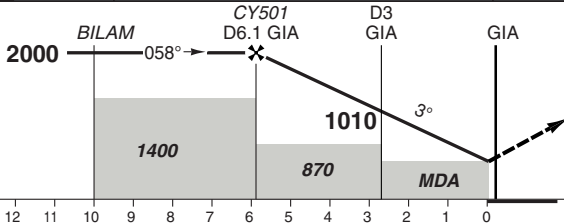
RNAV FAT 058° THR Elev 68 AD Elev 71 TL ATC TA 3000



PANS OPS

50 - 5

MAPt RW06



Climb on 058°. At CY502, turn right to AGREL climbing to 2000.

ACFT	LNAV/VNAV	LNAV	Circling
A	640 (570) 1500m	870 (800) 1500m	970 (890) 1.5km
B			970 (890) 1.6km
C	640 (570) 2400m	870 (800) 2400m	1070 (990) 2.4km
D			1070 (990) 3.6km

LDA 3300x45  
10826x147ft



NALS

© Navtech - gucy05iaip00

Change: New chart

**THIS CHART IS A PART OF NAVIGRAPH NDAC AND IS INTENDED FOR FLIGHT SIMULATION USE ONLY**

WEF 20 OCT 11

50 - 6 | 07 SEP 11

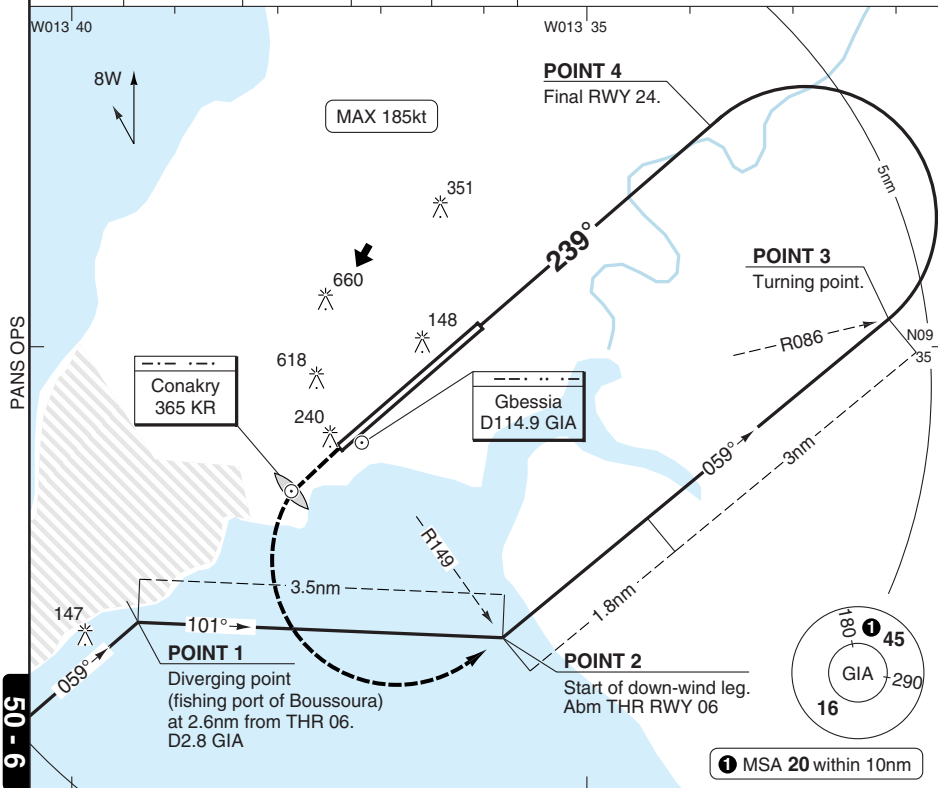
Guinea - GUCY / CKY  
Gbessia CONAKRY

# CIRCLING RWY 24

Conakry APP  
119.7

TWR  
118.7

FAT 239° TDZ Elev 59 AD Elev 72 TL ATC TA 3000



In case of no visual references, consider diverging point to the position at which MDA (H) is reached.

ACFT	Circling <b>a</b>
A	970 (890) 1.6km
B	970 (890) 2.0km
C	1070 (990) 2.8km
D	1070 (990) 3.6km

**a** Prohibited North of RWY.

LDA 3300x45  
10826x147ft



STATE  
© Navtech - gucy06iaip00

NALS

Change: Renumbered, Var, Minima

**THIS CHART IS A PART OF NAVIGRAPH NDAC AND IS INTENDED FOR FLIGHT SIMULATION USE ONLY**