

Airport information:

Country: Mauritania

City: NOUAKCHOTT

Coordinates: N 18° 05.7', W 015° 57.0'

Elevation: 7

Customs: Customs

Fuel: 100LL, Jet 1A

RFF: CAT 7

hours: ATS H24

Runways:

Runway 05

Takeoff length: 3000, Landing length: 3000

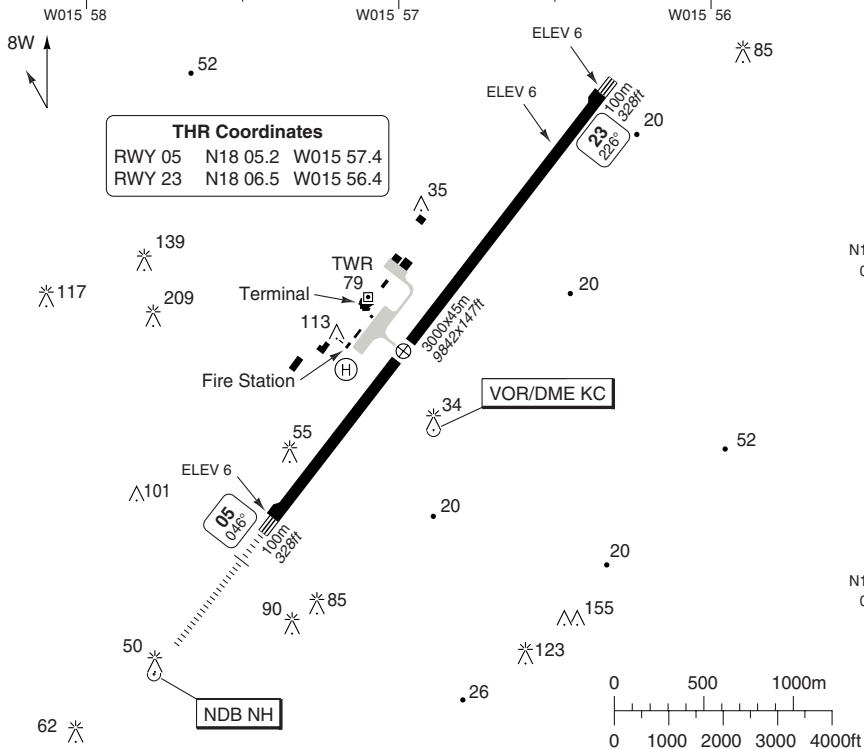
Runway 23

Takeoff length: 3000, Landing length: 3000

AERODROME

Nouakchott TWR
118.4

AD Elev 7 | ARP: N18 05.7 W015 57.0 | RFF: CAT 7 | AD HR: H24



RWY	Slope	TORA m/ft	LDA m/ft	ALS	REDL	Additional
05	0	3000 / 9842	3000 / 9842	H-D	H	REIL
23	0	3000 / 9842	3000 / 9842	-	H	P 3° REIL

STATE TAKE OFF MINIMA

RWY	Facilities	RVR	
		A B C	D
05/23	REDL and/or RCL	LVT0	250m / 300m
	REDL and/or RCL		400m / 400m
	NIL (day only)		500m / 500m

© Navitech - gqnn01aorg0

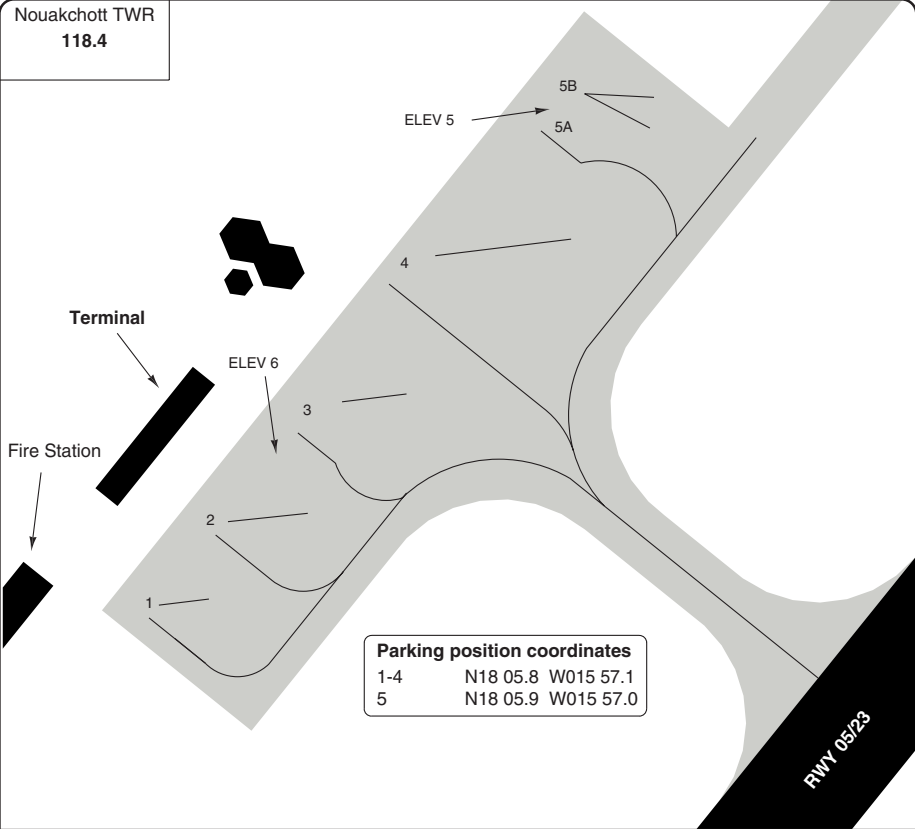
Change: New spec.

THIS CHART IS A PART OF NAVIGRAPH NDAC AND IS INTENDED FOR FLIGHT SIMULATION USE ONLY

AERODROME

Nouakchott TWR
 118.4

10 - 2



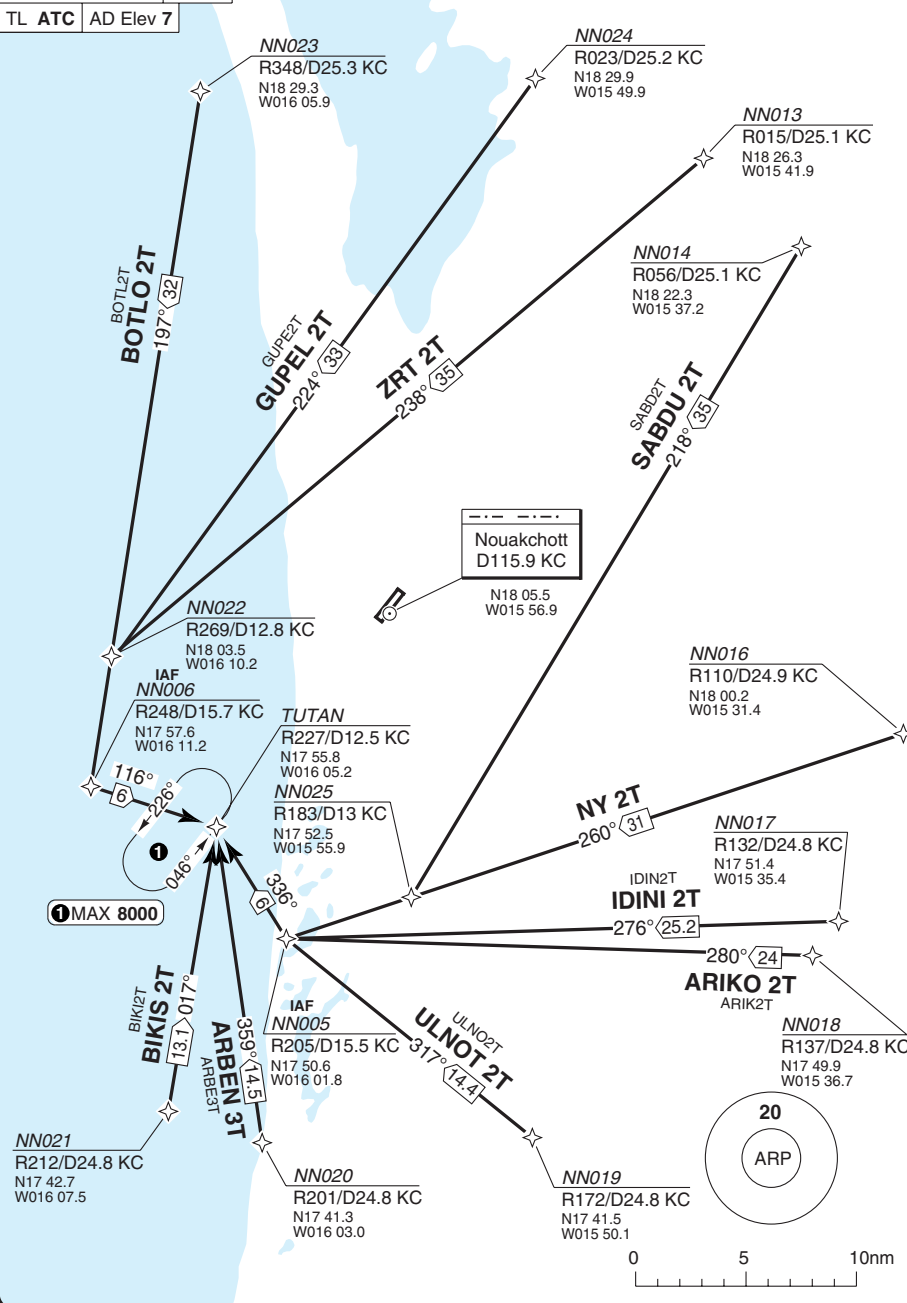
Parking position coordinates	
1-4	N18 05.8 W015 57.1
5	N18 05.9 W015 57.0

GENERAL INFORMATION

1. **AERODROME RESTRICTION**
 AD prohibited for ACFT not equipped with two way radio communication.
2. **CIRCUITS**
 Right hand circuit RWY 05.
3. **TRAFFIC NOTES**
 - 3.1 Overflying the city is prohibited.
 - 3.2 ACFT heavier than 40t, 180° turns on RWY ends only.
4. **DEPARTURE**
 After TKOF RWY 05/23 Maintain RWY HDG until 4nm, then proceed according to ATC clearance.

STAR RWY 05 RNAV

Nouakchott APP 118.4	TWR 118.4
TL ATC	AD Elev 7



Change: New spec.

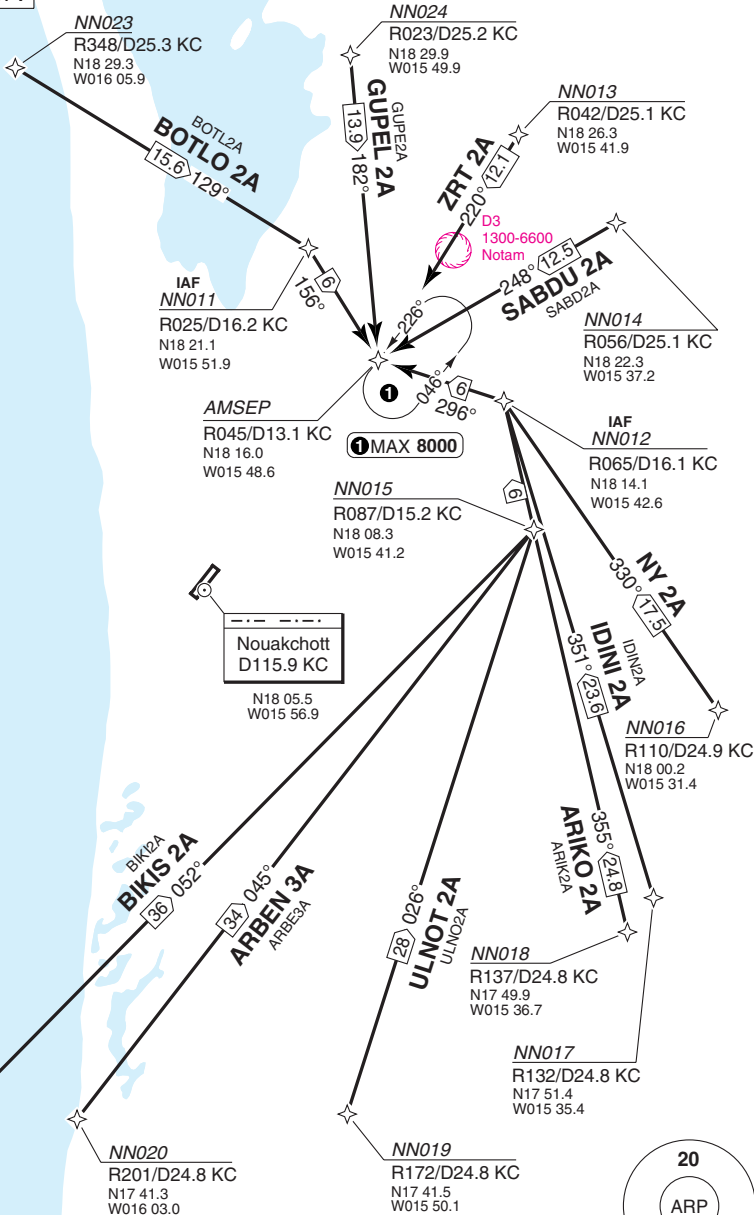
THIS CHART IS A PART OF NAVGRAPH NDAC AND IS INTENDED FOR FLIGHT SIMULATION USE ONLY

STAR RWY 23 RNAV

Nouakchott APP 118.4	TWR 118.4
-------------------------	--------------

TL ATC	AD Elev 7
--------	-----------

40 - 2



© Navitech - gbnm02aacorg0

Change: New spec.

THIS CHART IS A PART OF NAVIGRAPH NDAC AND IS INTENDED FOR FLIGHT SIMULATION USE ONLY

STAR RWY 23

Nouakchott APP
118.4

TWR
118.4

TL ATC AD Elev 7

BOTLO
N19 21.0
W016 25.7

Scale distorted

GUPEL
N21 20.0
W015 00.3

Zoueratt
112.7 ZRT
N22 45.5
W012 27.7

D25 KC
N18 29.7
W015 50.0

R042/D25 KC
N18 26.2
W015 42.0

SABDU
N18 58.8
W014 54.0

D14 KC
N18 18.7
W016 01.9

D4
1300-6600
Notam

D12 KC Arc
2000

ZRT 1D
235°

SABD 1D
263°

D25 KC
N18 22.2
W015 37.3

IAF DEGAM
R039/D12 KC
N18 15.8
W015 50.3

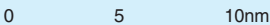
D17 KC

Nouakchott
D115.9 KC
N18 05.5
W015 56.9

ARBEN 2D
BIKIS 1D
D2
1300-6600
Notam

D12 KC Arc
2000

Niamey
D114.1 NY
N13 29.0
W002 12.4



D14 KC
N18 02.5
W015 42.5

NY 1D
290°

D14 KC
N17 57.6
W015 44.8

Bamako
D113.7 BKO
N12 32.8
W007 55.8

D14 KC
N17 51.9
W015 53.0

D14 KC
N17 56.6
W015 45.5

IDINI 1D
312°

ARIKO 1D
317°

D25 KC
N17 42.6
W016 07.5

BIKIS 1D
032°

D25 KC
N17 41.1
W016 03.0

ARBEN 2D
ARBEN 2D

D14 KC
N17 51.9
W015 53.0

ULNOT 1D
335°

Kayes
D116.7 KAY
N14 28.7
W011 25.3

Scale distorted
BIKIS
N16 16.7
W016 47.0

ARBEN
N16 26.3
W016 21.7

ULNOT
N17 06.4
W015 40.2



40 - 4

© Navitech - 061014040rg

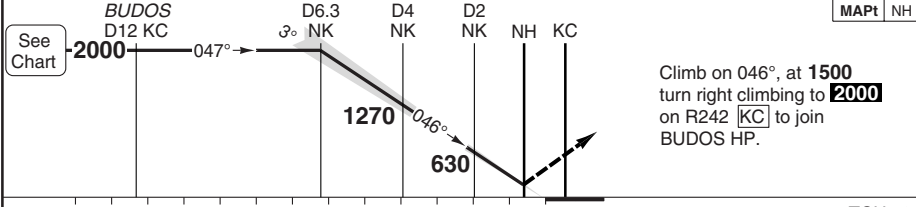
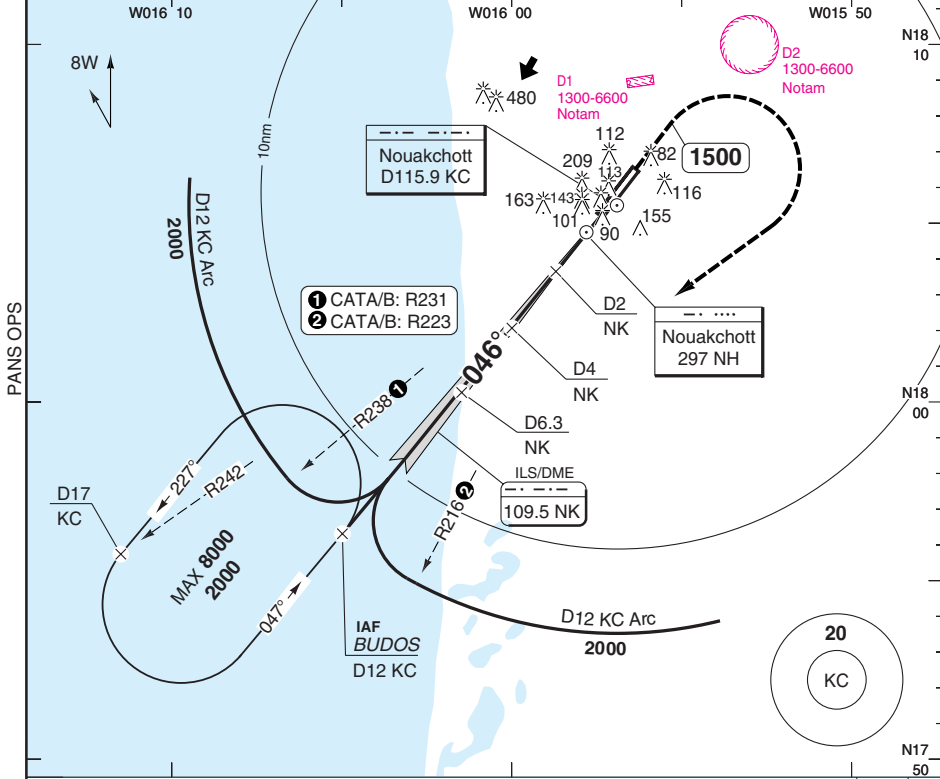
Change: New spec.

THIS CHART IS A PART OF NAVIGRAPH NDAC AND IS INTENDED FOR FLIGHT SIMULATION USE ONLY

ILS RWY 05 BUDOS

Nouakchott APP 118.4	TWR 118.4
-------------------------	--------------

ILS/DME 109.5 NK	FAT 046°	THR Elev 6	AD Elev 7	TL ATC	TA 2000
------------------	----------	------------	-----------	--------	---------



Climb on 046°, at 1500 turn right climbing to 2000 on R242 [KC] to join BUDOS HP.

nm	13	12	11	10	9	8	7	6	5	4	3	2	1	0	TCH 50
----	----	----	----	----	---	---	---	---	---	---	---	---	---	---	--------

ACFT	ILS	LOC	Circling a b
A	230 (220) 600m	390 (390) 1100m	460 (450) 1.5km
B	240 (230) 600m		510 (500) 1.6km
C	250 (240) 600m	390 (390) 1400m	610 (600) 2.4km
D	260 (250) 600m		710 (700) 3.6km

a HJ only.
b South East of AD only.

DME NK	3.0° ALT	LDA 3000x45 9842x147ft
6.3	2000	
6	1900	
5	1590	
4	1270	
3	950	
2	630	
1.2	390	

GS	80	100	120	140	160
ROD 3.0°	420	520	640	750	850

© Navtech - gqnn01iaip00

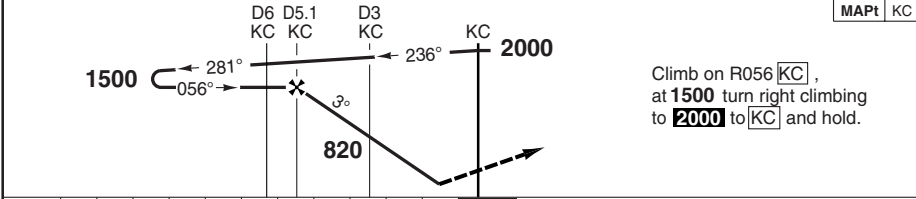
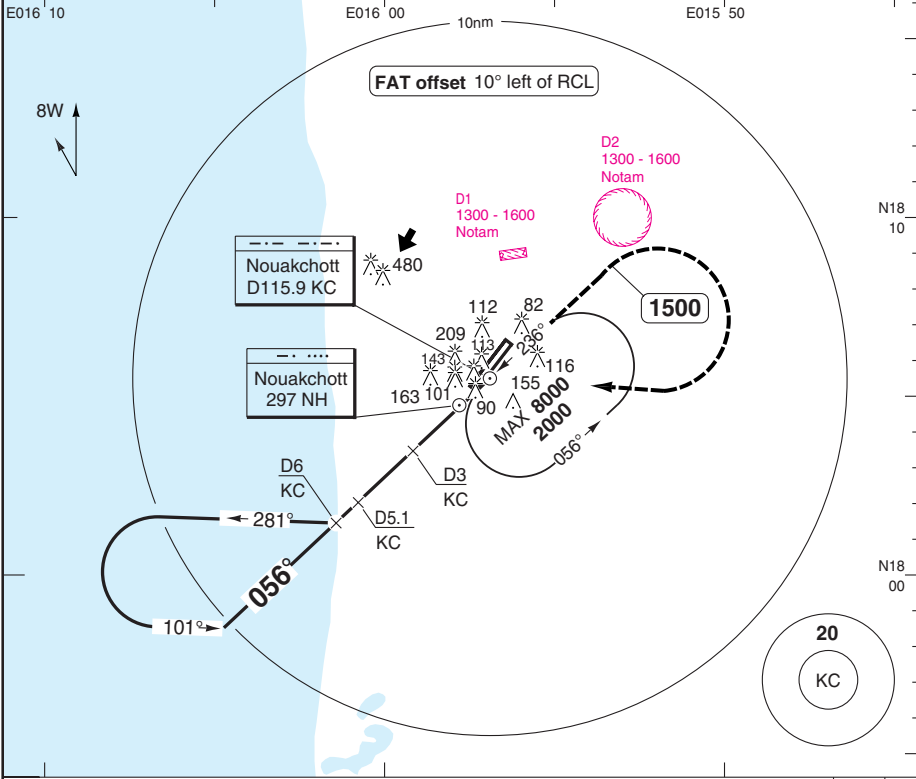
50 - 1

FALS

VOR RWY 05

Nouakchott APP 118.4	TWR 118.4
--------------------------------	---------------------

VOR/DME 115.9 KC	FAT 056°	THR Elev 6	AD Elev 7	TL ATC	TA 2000
-------------------------	-----------------	-------------------	------------------	---------------	----------------



nm	11	10	9	8	7	6	5	4	3	2	1	0
ACFT	VOR+DME		Circling a b		a HJ only. b South East of AD only.							
STATE	A	390 (390) 1100m	460 (450) 1.5km									
	B		510 (500) 1.6km									
	C	390 (390) 1200m	610 (600) 2.4km									
	D	390 (390) 1400m	710 (700) 3.6km									
GS	80	100	120	140	160							
ROD 3.0°	430	530	640	750	850							

DME	3.0°	LDA 3000x45
KC	ALT	9842x147ft
5.1	1500	
5	1470	
4	1150	
3	830	
2	510	
1.6	390	

© Navtech - gqnn03aip00

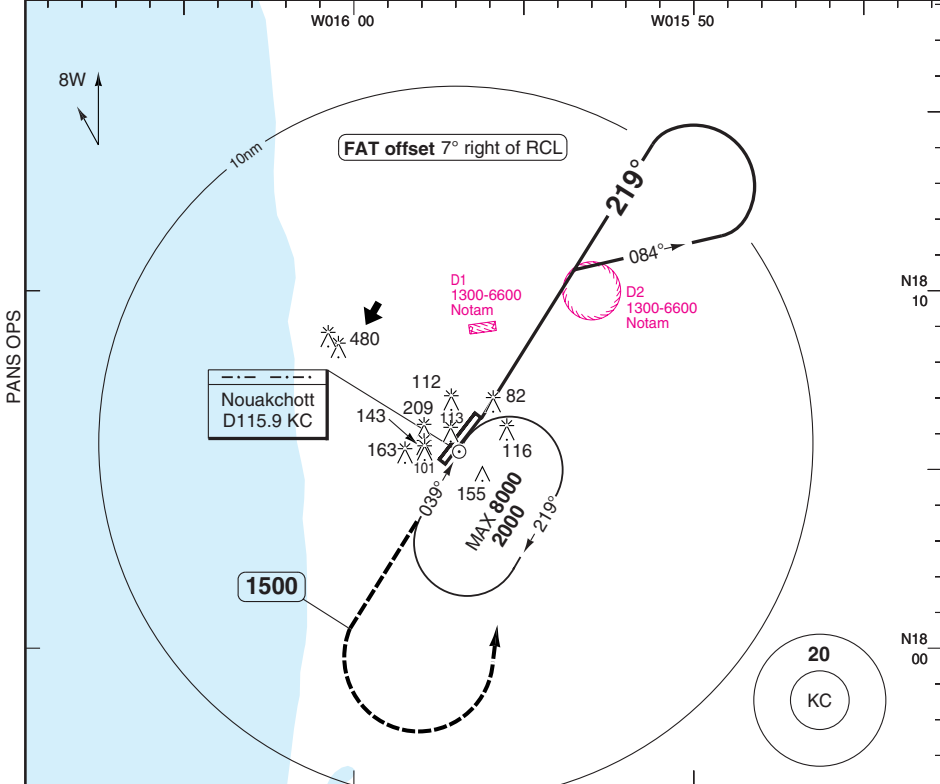
50 - 3

VOR RWY 23

Nouakchott APP 118.4	TWR 118.4
-------------------------	--------------

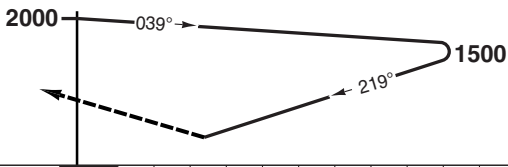
VOR/DME 115.9 KC	FAT 219°	TDZ Elev 6	AD Elev 7	TL ATC	TA 2000
------------------	----------	------------	-----------	--------	---------

W016 00 W015 50



MAPt KC

KC



Climb on R220 [KC],
at 1500 turn left climbing
to 2000 to [KC] and hold.

0 1 2 3 4 5 6 7 8 9 10 11 12 13 14 nm

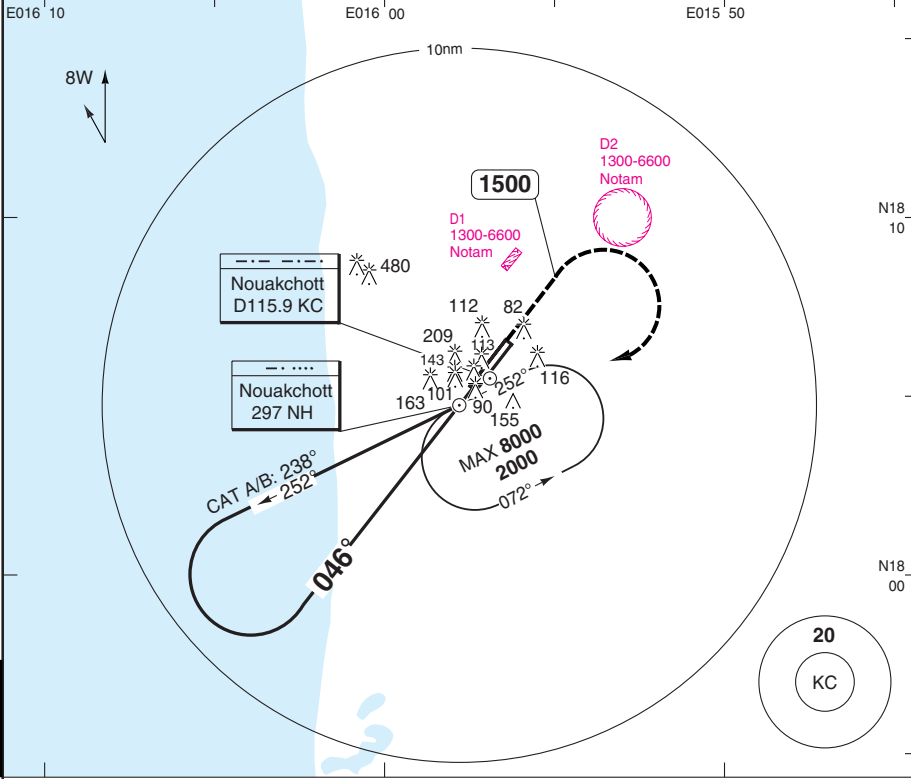
ACFT	VOR	VOR a	Circling b	Circling a b	a Non-CDFA b HJ only.	LDA 3000x45 9842x147ft P 3°
A	410 (410) 1900m	410 (410) 2100m	460 (450) 1.9km	460 (450) 2.1km	South East of AD only.	
B			510 (500) 1.9km	510 (500) 2.1km		
C			410 (410) 2300m	610 (600) 2.4km		
D	710 (700) 3.6km	710 (700) 3.6km				

NDB RWY 05

Nouakchott APP
118.4

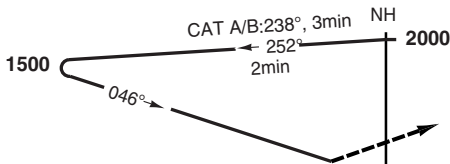
TWR
118.4

NDB **297 NK** | FAT **046°** | THR Elev **6** | AD Elev **7** | TL ATC | TA **2000**



PANS OPS

50 - 6



Climb on 046°, at 1500 turn right climbing to 2000 to NH and hold.

nm 11 10 9 8 7 6 5 4 3 2 1 0

ACFT	NDB	NDB C	Circling a b
A	440 (440) 1300m	440 (440) 1500m	460 (450) 1.5km
B			510 (500) 1.6km
C	440 (440) 1400m	440 (440) 1700m	610 (600) 2.4km
D			710 (700) 3.6km

- a HJ only.
- b South East of AD only.
- c Non-CDFA

LDA 3000x45
 9842x147ft

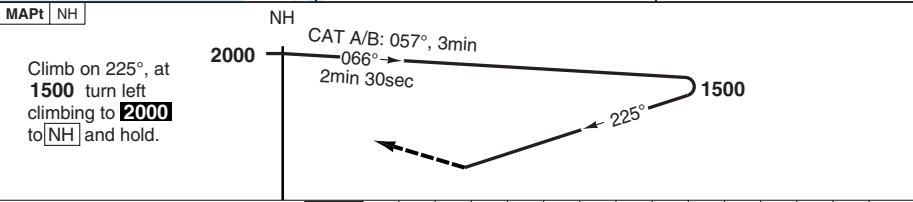
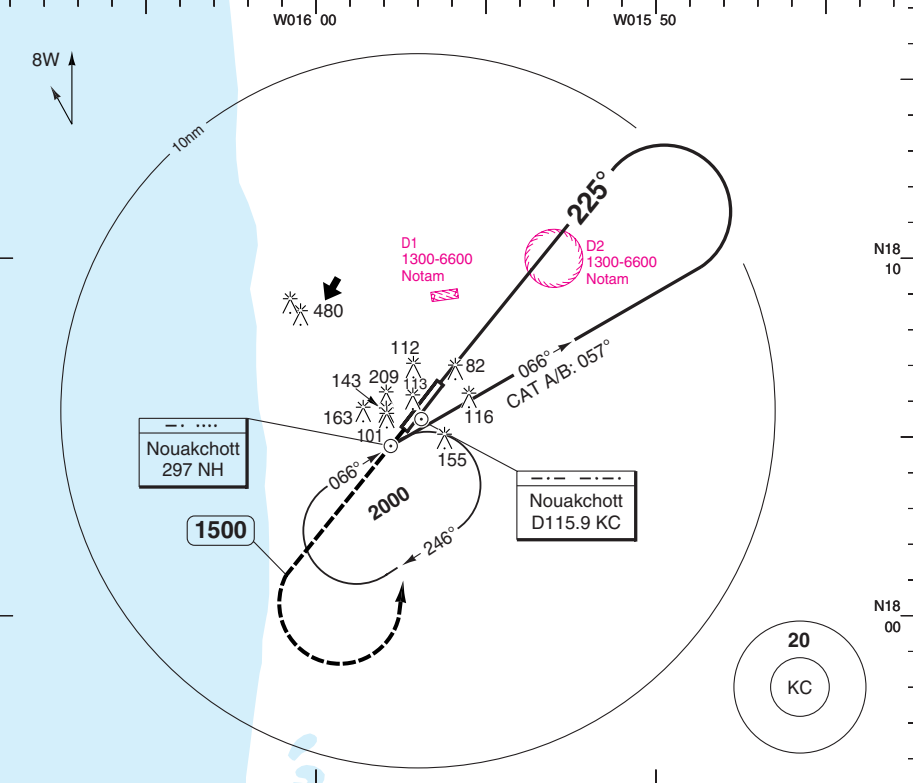


FALS

NDB RWY 23

Nouakchott APP 118.4		TWR 118.4
--------------------------------	--	---------------------

NDB 297 NH	FAT 225°	TDZ Elev 6	AD Elev 7	TL ATC	TA 2000
-------------------	-----------------	-------------------	------------------	---------------	----------------



																nm
--	--	--	--	--	--	--	--	--	--	--	--	--	--	--	--	----

ACFT	NDB	NDB a	Circling b	Circling a b	a Non-CDFA b HJ only. South East of AD only.	LDA 3000x45 9842x147ft P 3°
A	440 (440) 2000m	440 (440) 2200m	460 (450) 2.0km	460 (450) 2.2km		
B			510 (500) 2.0km	510 (500) 2.2km		
C	440 (440) 2400m	440 (440) 2400m	610 (600) 2.4km	610 (600) 2.4km		
D			710 (700) 3.6km	710 (700) 3.6km		

STATE						
-------	--	--	--	--	--	--

© Navtech - gqnn07iaip00

50 - 7

NALS

Change: New spec.

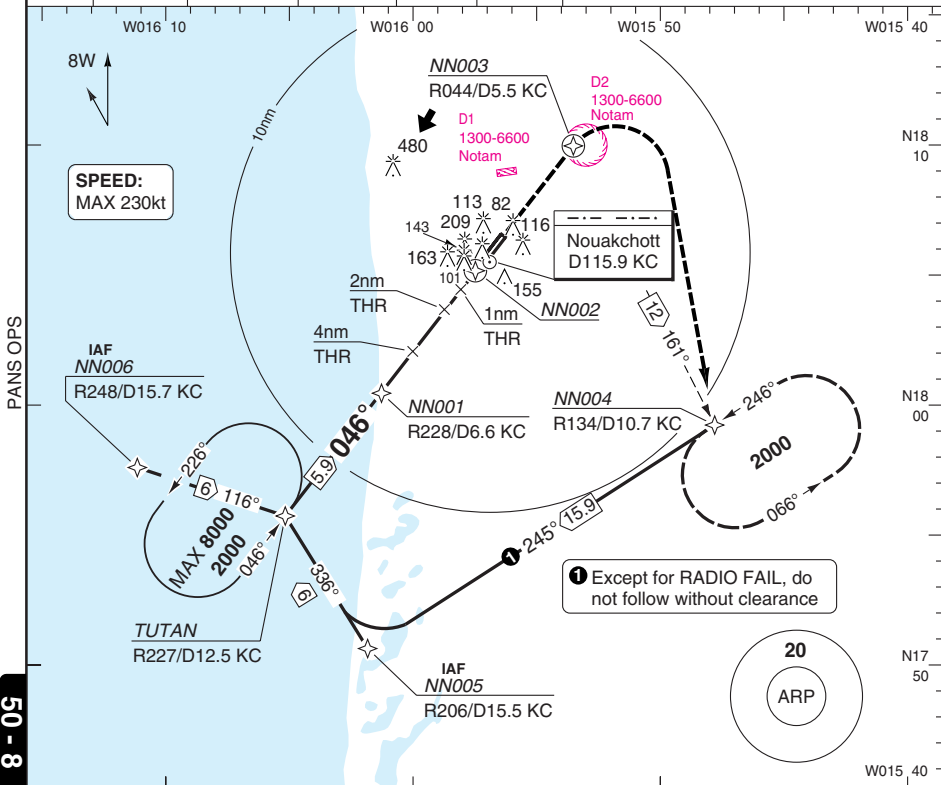
THIS CHART IS A PART OF NAVIGRAPH NDAC AND IS INTENDED FOR FLIGHT SIMULATION USE ONLY

RNAV (GNSS) RWY 05

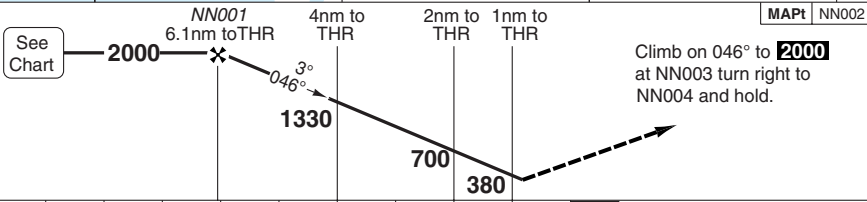
Nouakchott APP
118.4

TWR
118.4

RNAV FAT 046° THR Elev 6 AD Elev 7 TL ATC TA 2000



50 - 8



nm 9 8 7 6 5 4 3 2 1 0 TCH 50

ACFT	LNAV	Circling a b
A		460 (450) 1.5km
B	390 (390) 1100m	510 (500) 1.6km
C		610 (600) 2.4km
D	390 (390) 1400m	710 (700) 3.6km

a HJ only.
b South East of AD only.

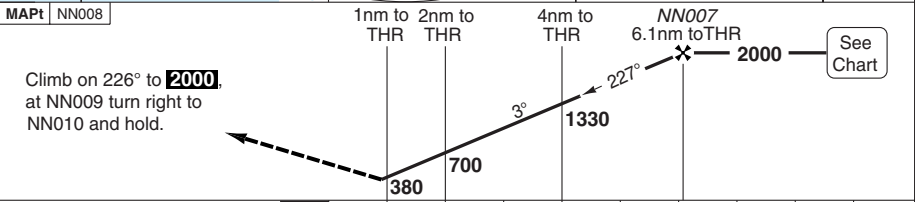
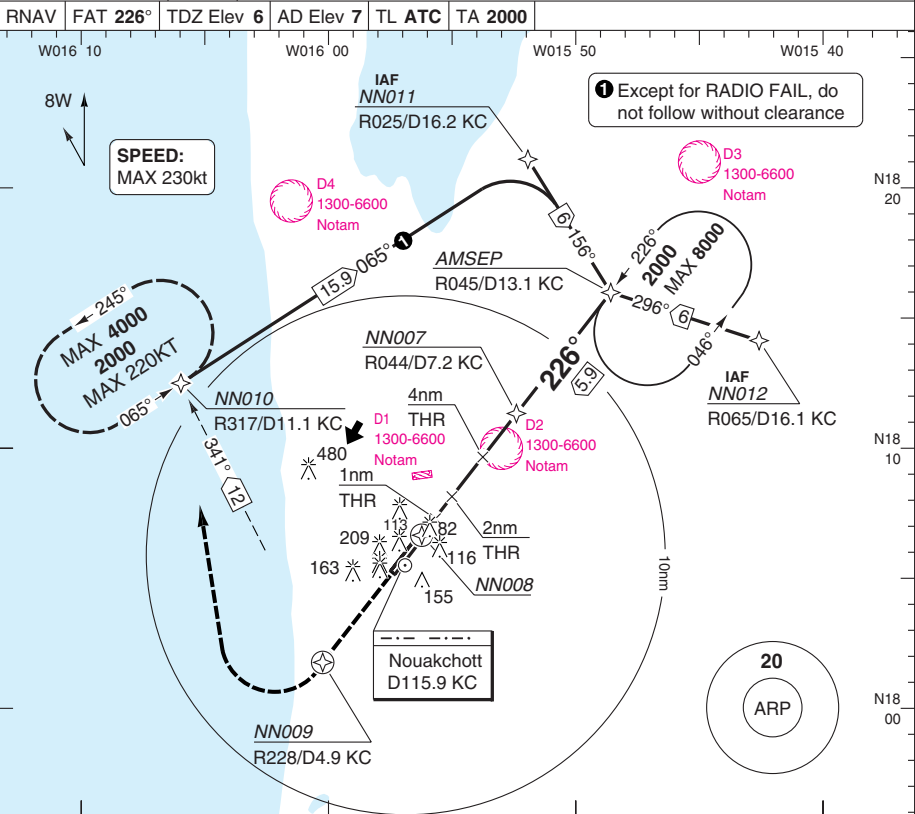
THR	3.0° ALT	LDA 3000x45 9842x147ft
05		
6.1	2000	
6	1970	
5	1650	
4	1330	
3	1010	
2	700	
1	390	

GS	80	100	120	140	160
ROD 3.0°	420	530	640	740	850

Change: New spec.

RNAV (GNSS) RWY 23

Nouakchott APP 118.4		TWR 118.4
RNAV	FAT 226°	TDZ Elev 6
	AD Elev 7	TL ATC
	TA 2000	



TCH 50 0 1 2 3 4 5 6 7 8 9 nm

ACFT	LNAV	Circling a b
A	330 (330) 1500m	460 (450) 1.5km
B	330 (330) 1800m	510 (500) 1.6km
C	330 (330) 2000m	610 (600) 2.4km
D	330 (330) 2000m	710 (700) 3.6km

a HJ only.
b South East of AD only.

THR	3.0°	LDA 3000x45 9842x147ft P 3°
23	ALT	
6.1	2000	
6	1970	
5	1650	
4	1330	
3	1010	
2	700	
1	380	
0.8	330	

GS	80	100	120	140	160
ROD 3.0°	430	530	640	750	850

Change: New spec.

© Navitech - gqnn09aip00

50 - 9

NALS
Reverse side blank