

Airport information:

Country: Morocco

City: AL HOCEIMA

Coordinates: N 35° 10.8', W 003° 49.9'

Elevation: 95

Customs: Cus H24

Fuel: 100LL, Jet A1

RFF: CAT 6

hours: H24

Runways:

Runway 17

Takeoff length: 2500, Landing length: 2500

Runway 35

Takeoff length: 2500, Landing length: 2500

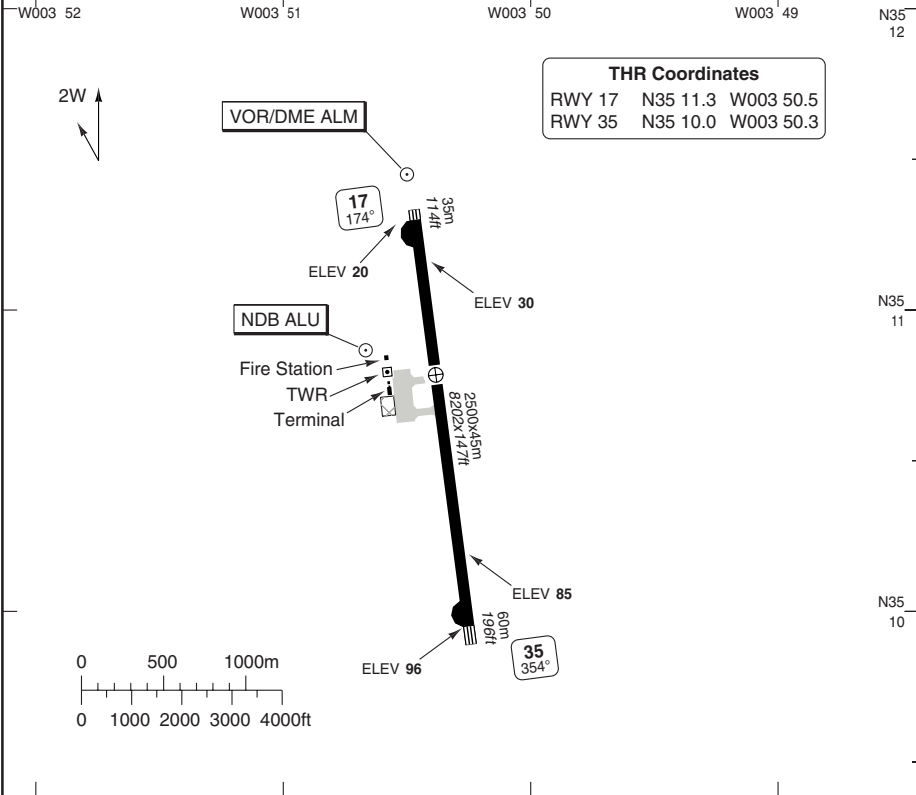
AERODROME

Cherif El Idrissi **AL HOCEIMA**

10 - 1

Al Hoceima TWR
118.7
123.9

AD Elev **95** | ARP: N35 10.8 W003 50.4 | RFF: CAT 6 | AD HR: H24



RWY	Slope	TORA m/ft	LDA m/ft	ALS	REDL	Additional
17	+0.9	2500 / 8202	2500 / 8202	-	H ①	P 3° L/R
35	-0.9	2500 / 8202	2500 / 8202	-	H ①	-

① White.

EU OPS TAKE OFF MINIMA

RWY	Facilities	RVR		
		A	B	C
17/35	RCL (day only) or RCL + REDL	400m		
	NIL (day only)	500m		

© Navitech - gmita01laorg0

Change: New spec.

THIS CHART IS A PART OF NAVIGRAPH NDAC AND IS INTENDED FOR FLIGHT SIMULATION USE ONLY

AERODROME

Cherif El Idrissi AL HOCEIMA

10 - 2

Al Hoceima TWR
 118.7
 123.9

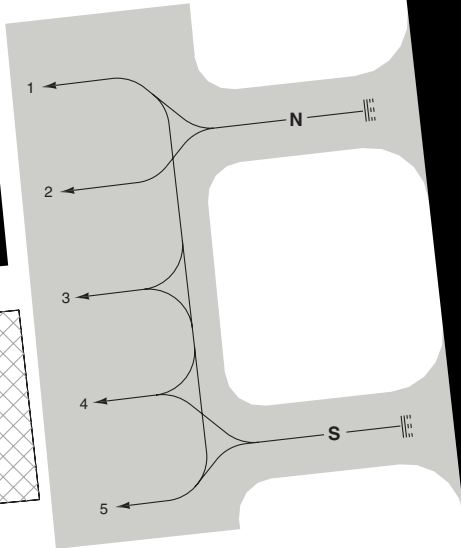
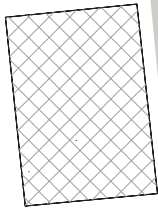
Parking position coordinates

1, 2	N35 10.8 W003 50.6
3-5	N35 10.7 W003 50.5

Fire Station

TWR

Terminal



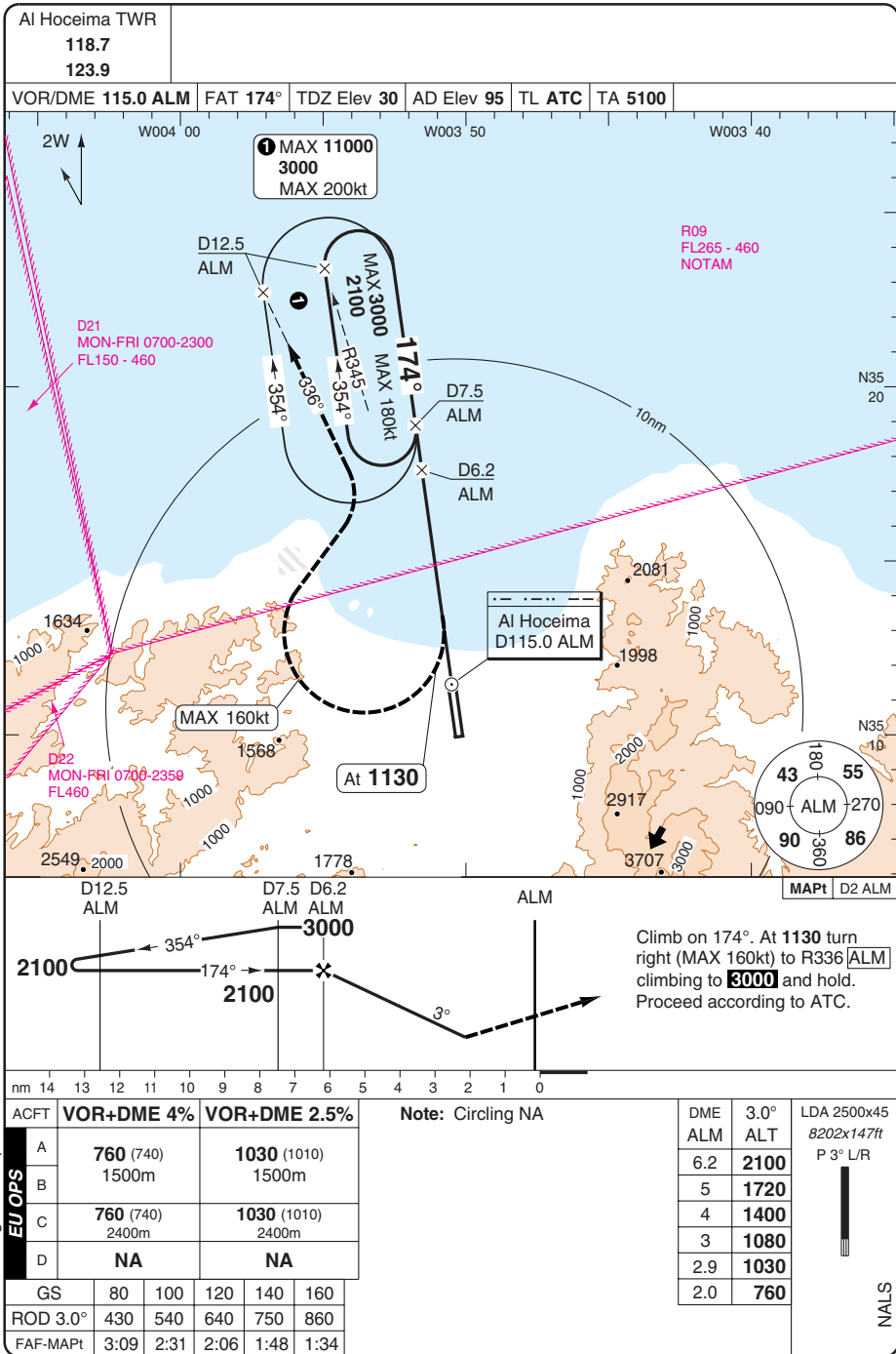
GENERAL INFORMATION

1. WARNING
 Bird Hazard.

2. TRAFFIC NOTES
 2.1 Flying over Spanish Fort prohibited at all altitudes.
 2.2 Left turn after take off RWY 35.

VOR RWY 17 VOR/DME

Cherif El Idrissi AL HOCEIMA



50 - 1

© Navtech - gmata01aip00

ACFT	VOR+DME 4%	VOR+DME 2.5%
A	760 (740) 1500m	1030 (1010) 1500m
B	760 (740) 2400m	1030 (1010) 2400m
C	760 (740) 2400m	1030 (1010) 2400m
D	NA	NA

GS	80	100	120	140	160
ROD 3.0°	430	540	640	750	860
FAF-MAPt	3:09	2:31	2:06	1:48	1:34

Note: Circling NA

DME	3.0°	LDA 2500x45
ALM	ALT	8202x147ft
6.2	2100	P 3° L/R
5	1720	
4	1400	
3	1080	
2.9	1030	
2.0	760	

NALS

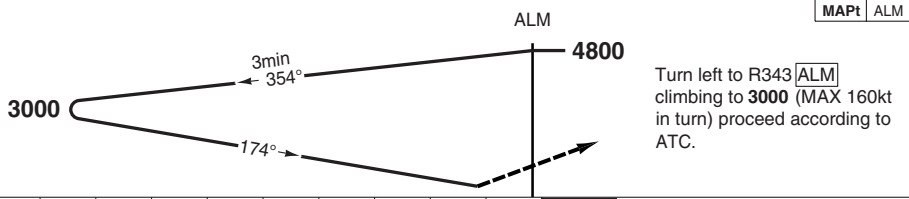
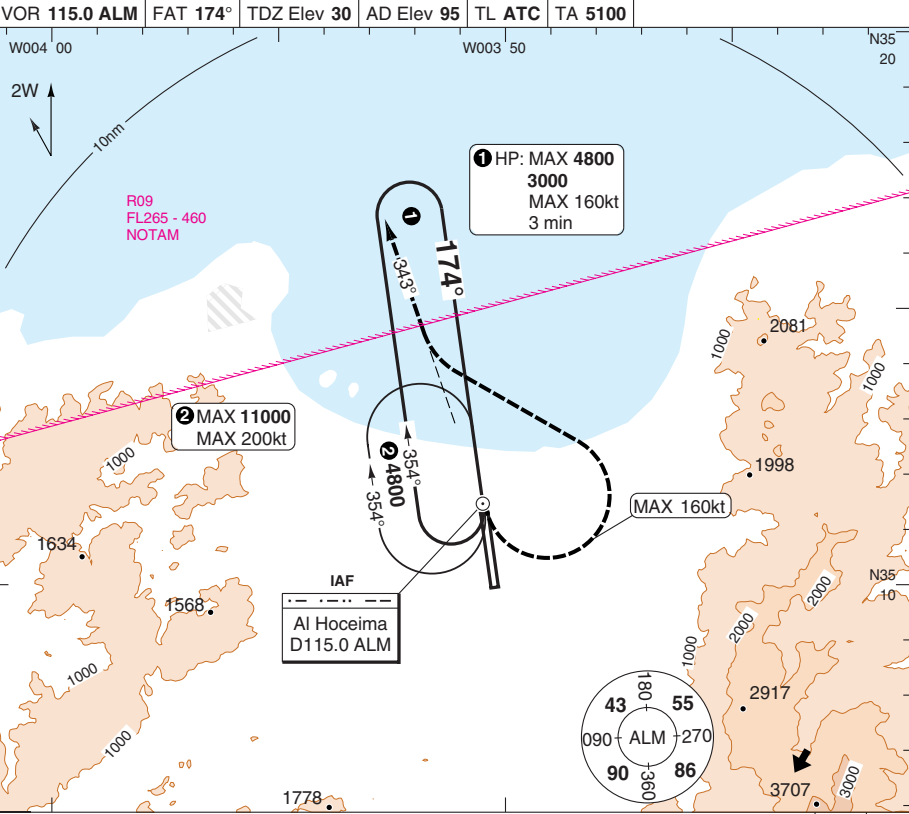
Change: New spec.

THIS CHART IS A PART OF NAVIGRAPH NDAC AND IS INTENDED FOR FLIGHT SIMULATION USE ONLY

VOR RWY 17

Cherif El Idrissi AL HOCEIMA

Al Hoceima TWR 118.7 123.9					
VOR 115.0 ALM	FAT 174°	TDZ Elev 30	AD Elev 95	TL ATC	TA 5100



nm	9	8	7	6	5	4	3	2	1	0	
ACFT	VOR	VOR ^a	Circling	^a Non CDFA							
C	1960 (1940) 5000m	1960 (1940) 5000m	2110 (2090) 5.0km								

LDA 2500x45
8202x147ft
P 3° L/R

NALS

50 - 2

© Navitech - gmita02laip00 EU OPS

Change: New spec.

THIS CHART IS A PART OF NAVIGRAPH NDAC AND IS INTENDED FOR FLIGHT SIMULATION USE ONLY