

Airport information:

Country: Morocco

City: FES

Coordinates: N 33° 55.6', W 004° 58.7'

Elevation: 254

Customs: : H24: H24

Fuel: 100LL, Jet A1

RFF: CAT 8

hours: H24

Runways:

Runway 09

Takeoff length: 3200, Landing length: 3200

Runway 27

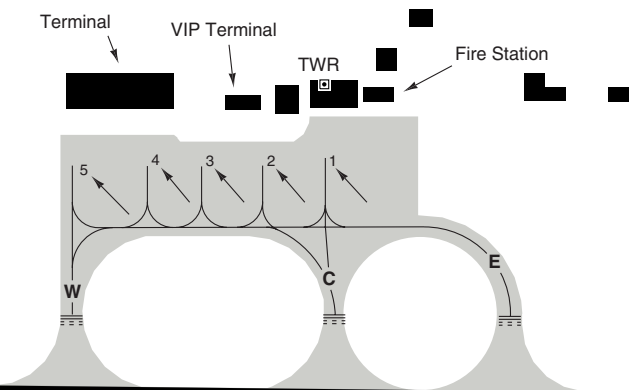
Takeoff length: 3200, Landing length: 2950

AERODROME

10 - 2

Fes TWR
118.6

Parking position coordinates	
1 - 3	N33 55.8 E004 58.8
4 - 5	N33 55.8 E004 58.9



GENERAL INFORMATION

1. WARNING

- 1.1 Wind shear RWY 27.
- 1.2 Overflying Fes city below FL55 is prohibited except for landing and departing traffic.

2. RWY RESTRICTION

ACFT heavier than 40T are to execute 180° turns on RWY ends only.

3. COMMUNICATION

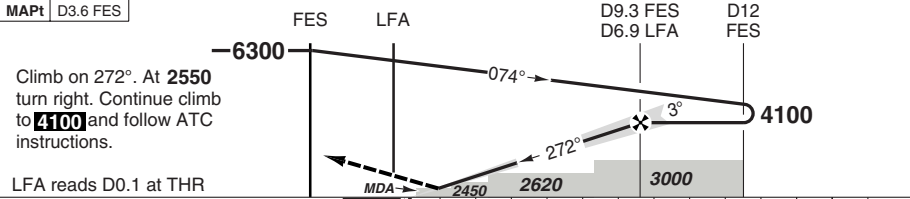
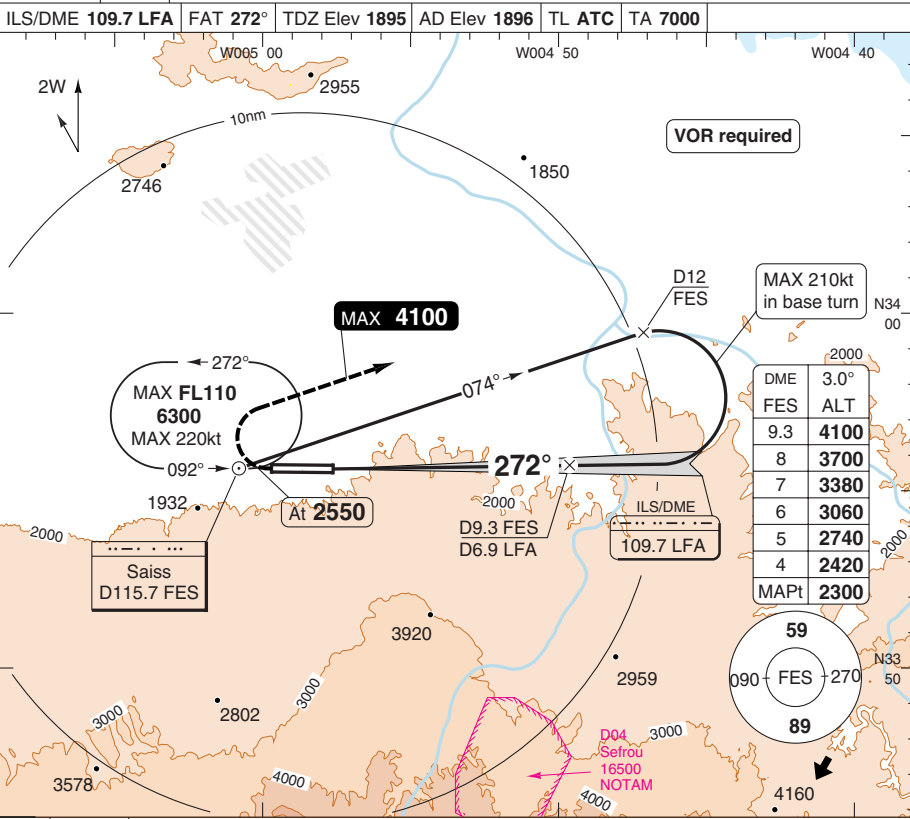
CTR prohibited for ACFT not fitted with VHF coms.

© Navitech - gmff02laorg0

Change: GEN

ILS RWY 27

Fes APP 118.6	TWR 118.6				
ILS/DME 109.7 LFA	FAT 272°	TDZ Elev 1895	AD Elev 1896	TL ATC	TA 7000



TCH 52

ACFT	ILS+DME	LOC+DME	Note: Circling NA
A	2120 (228) 800m	2300 (408) 1500m	
B	2130 (238) 800m		
C	2140 (248) 800m		
D	2150 (258) 800m		

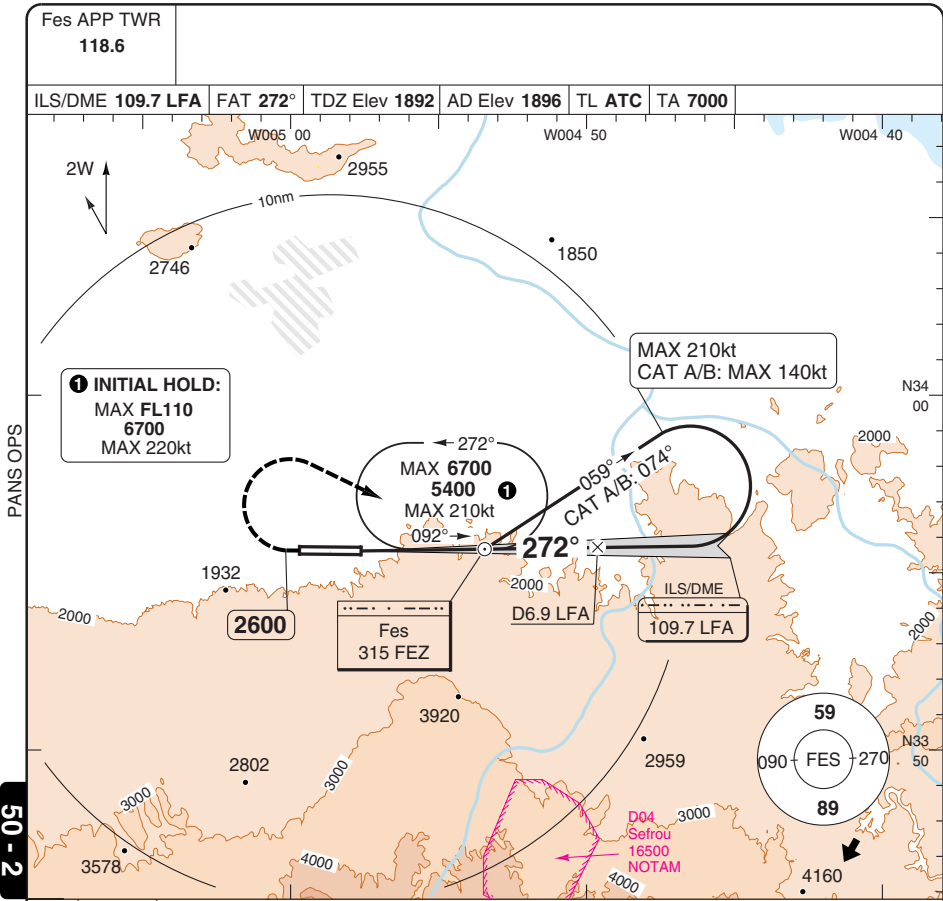
DME	3.0° ALT	LDA 2950x45 9678x147ft
LFA	ALT	P 3°
6.9	4100	
6	3820	
5	3500	
4	3180	
3	2850	
2	2530	
1.3	2300	

GS	80	100	120	140	160
ROD 3.0°	430	540	650	750	860

Change: TA

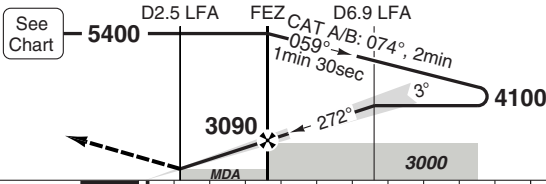
ILS OR LOC RWY 27

Saïss FES



MAPt D1.2 LFA

Climb on 272°. At **2600** turn right, MAX 200kt, to **4100** to [FEZ].



LFA reads D0.1 at THR

TCH 52

ACFT	ILS	LOC	NDB	Circling [ⓐ]
A	2170 (278) 900m	2300 (408) 1500m	2500 (608) 2400m	2650 (754) 1.5km [ⓑ]
B	2180 (288) 900m			2650 (754) 1.6km [ⓑ]
C	2190 (298) 900m			2900 (1004) 2.4km
D	2200 (308) 1000m			2900 (1004) 3.6km

DME	3.0°	LDA 2950x45
LFA	ALT	9678x147ft
6.9	4100	P 3° 420
6	3820	
5	3510	
4	3190	
3	2870	
2	2550	
1.2	2300	

[ⓐ] NA between 120° FEZ clockwise to 220° FEZ.

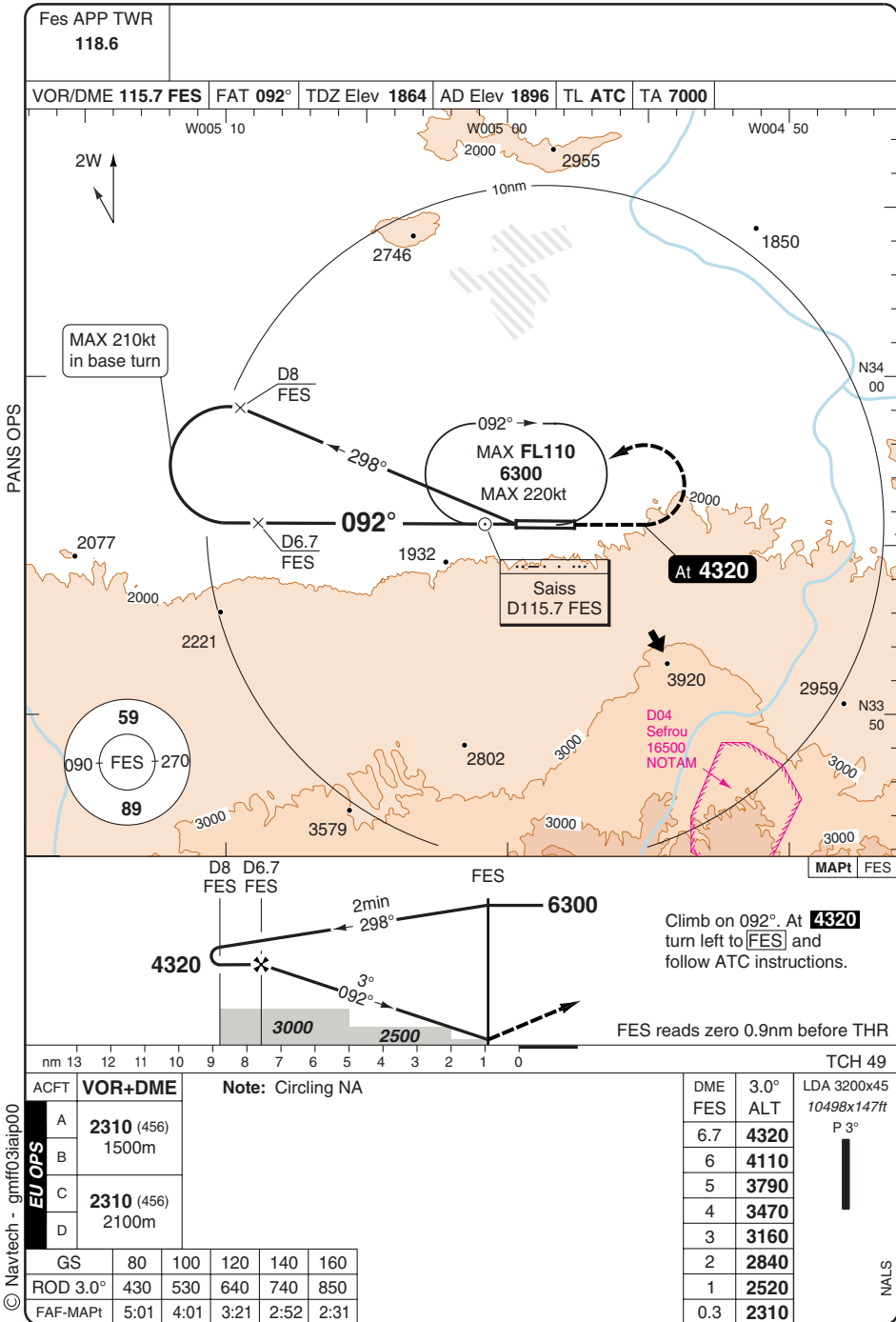
[ⓑ] After NDB VIS 2.4km.

© Navtech - gmff02aip00

Change: New chart

VOR RWY 09 VOR/DME

Saiss FES



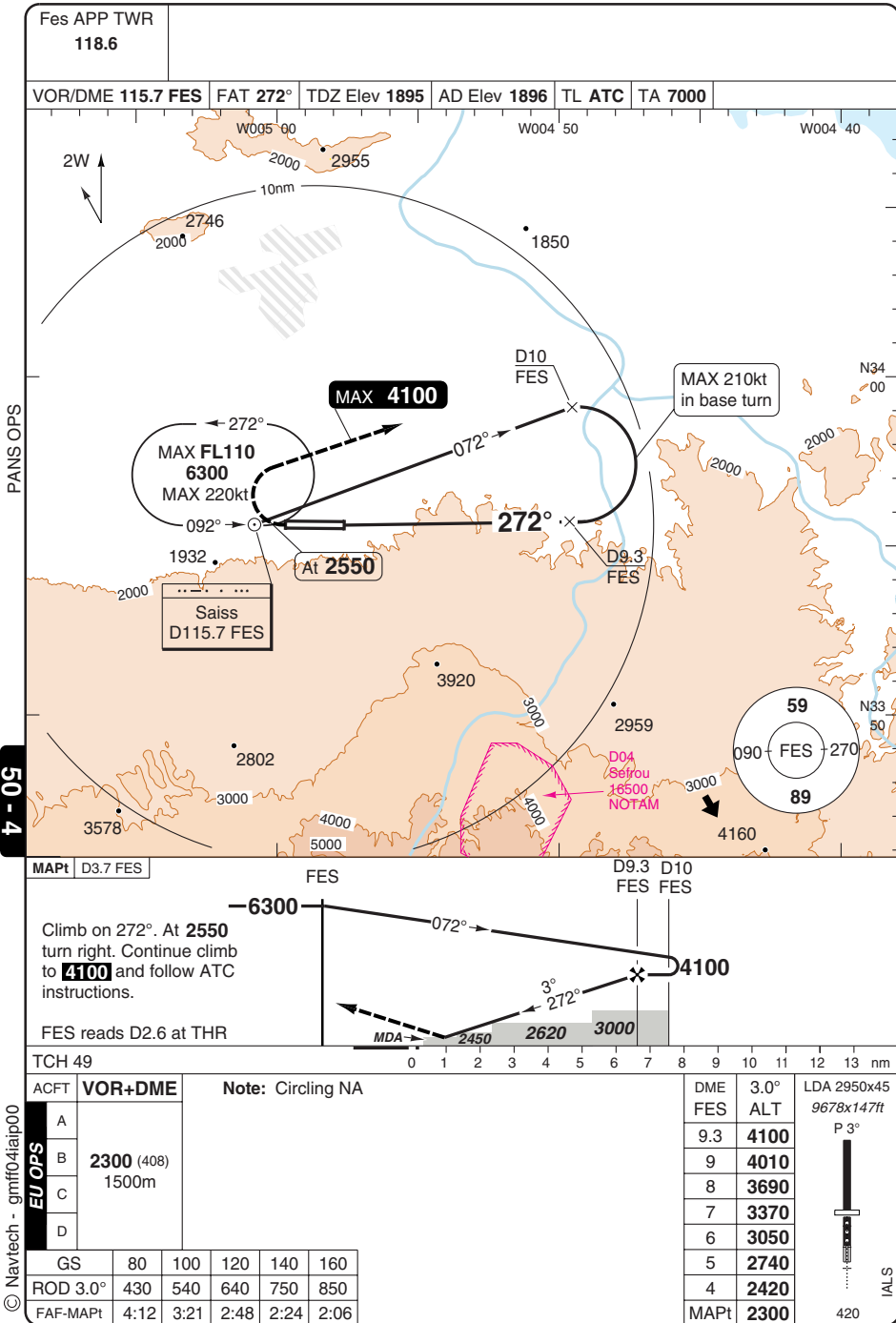
© Navitech - gmif03iaip00

Change: TA

THIS CHART IS A PART OF NAVIGRAPH NDAC AND IS INTENDED FOR FLIGHT SIMULATION USE ONLY

VOR RWY 27 VOR/DME

Saïss FES



© Navitech - gmif04iaip00

Reverse side blank

JAR-OPS Landing Minima

Saiss **FEZ**

The following Minima is for Public Transport aircraft and conforms to JAR-OPS1 regulations.

STRAIGHT-IN APPROACH		C				D			
R/W	Procedure	DA/ MDA QNH ft	DH/ MDH QFE ft	RVR m	RVR No ALS m	DA/ MDA QNH ft	DH/ MDH QFE ft	RVR m	RVR No ALS m
09	VOR/DME	2310	460	2000	N/A	2310	460	2000	N/A
27	ILS	2140	250	700	1000	2150	260	800	1200
27	LOC	2300	410	1400	1800	2300	410	1600	2000
27	VOR/DME	2300	410	1400	1800	2300	410	1600	2000

Notes:

CIRCLING		C			D		
R/W	Procedure	MDA QNH ft	MDH QFE ft	Vis m	MDA QNH ft	MDH QFE ft	Vis m
Not authorised							

Not authorised

Notes:

TAKE-OFF		C		D	
Runway	Facilities	RVR	Vis	RVR	Vis
09/27	REDL and/or RCL	400	-	400	-
09/27	Nil (Day only)	500	-	500	-

Notes:

JAR-OPS Landing Minima

Saiss **FEZ**

The following Minima is for Public Transport aircraft and conforms to JAR-OPS1 regulations.

STRAIGHT-IN APPROACH		A				B			
R/W	Procedure	DA/ MDA QNH ft	DH/ MDH QFE ft	RVR m	RVR No ALS m	DA/ MDA QNH ft	DH/ MDH QFE ft	RVR m	RVR No ALS m
09	VOR/DME	2310	460	1500	N/A	2310	460	1500	N/A
27	ILS	2120	230	700	1000	2130	240	700	1000
27	LOC	2300	410	1200	1500	2300	410	1300	1500
27	VOR/DME	2300	410	1200	1500	2300	410	1300	1500

Notes:

CIRCLING		A			B		
R/W	Procedure	MDA QNH ft	MDH QFE ft	Vis m	MDA QNH ft	MDH QFE ft	Vis m
Not authorised							

Notes:

TAKE-OFF		A		B	
Runway	Facilities	RVR	Vis	RVR	Vis
09/27	REDL and/or RCL	400	-	400	-
09/27	Nil (Day only)	500	-	500	-

Notes: