

## Airport information:

Country: Liberia

City: MONROVIA

Coordinates: N 06° 14.4', W 10° 21.6'

Elevation: 31

Customs: Customs

Fuel: Jet A1, 100

RFF: CAT 8

hours: H24.

## Runways:

Runway 04

Takeoff length: 3353, Landing length: 3353

Runway 22

Takeoff length: 3353, Landing length: 2987

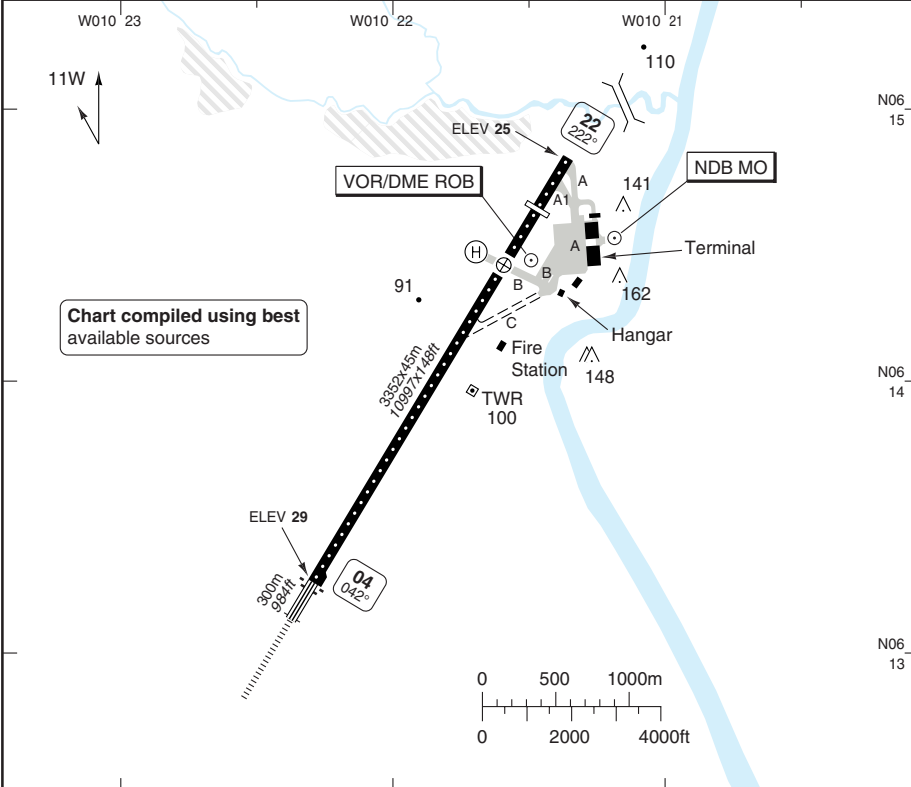
# AERODROME

## Roberts INTL MONROVIA

10 - 1

Roberts GND <b>121.9</b>	TWR <b>118.3</b>	APP <b>124.5</b>	OPS <b>131.4</b>
-----------------------------	---------------------	---------------------	---------------------

AD Elev <b>31</b>	ARP: N06 14.4 W010 21.6	RFF: CAT <b>8</b>	AD HR: H24
-------------------	-------------------------	-------------------	------------



RWY	Slope	TORA m/ft	LDA m/ft	ALS	REDL	Additional
04	0	3352 / 10997	3352 / 10997	H-D	avbl ①	V 2.6°, REIL
22	0	3352 / 10997	2985 / 9793	-	avbl ①	AV 2.5° (LH), REIL

① First 610m / 2000ft amber, last 2743m / 9000ft white at 61m / 200ft intervals.

EU OPS		TAKE OFF MINIMA	
RWY	Facilities	RVR A B C D	
04/22	RCL (day only) or RCL + REDL	400m	
	NIL (day only)	500m	

### GENERAL INFORMATION

Westbound DEP turning right should complete turn within D6.8 ROB to avoid danger area D42.

© Navtech - gjrb01laorg0

Reverse side blank

Change: New spec.

**THIS CHART IS A PART OF NAVIGRAPH NDAC AND IS INTENDED FOR FLIGHT SIMULATION USE ONLY**

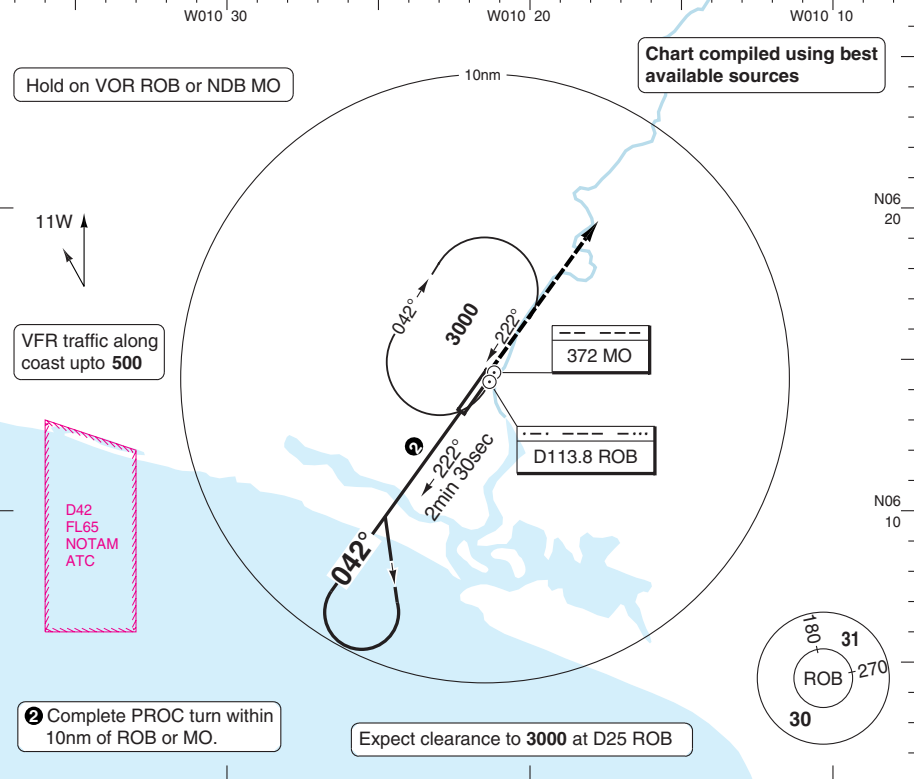


# VOR RWY 04

## Roberts INTL MONROVIA

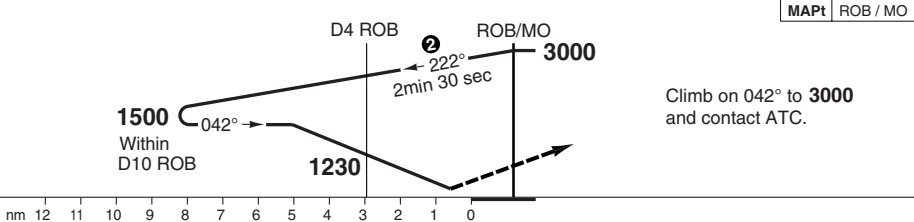
Roberts APP 124.5	TWR 118.3	GND 121.9	OPS 131.4
----------------------	--------------	--------------	--------------

VOR 113.8 ROB	FAT 042°	THR Elev 29	AD Elev 31	TL FL50	TA 3000
---------------	----------	-------------	------------	---------	---------



PANS OPS

50 - 2



ACFT	<b>VOR+DME</b>
A	
B	450 (419)
C	1200m
D	

Note: Circling NA

LDA 3352x45  
10997x148ft  
V 2.6°

GS	80	100	120	140	160
ROD 3.0°	430	540	640	750	850



FALS

© Navtech - glrb02iaip00

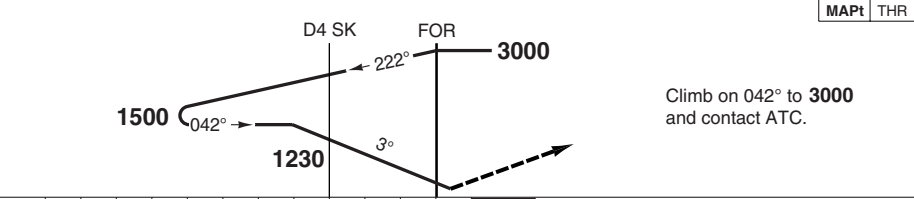
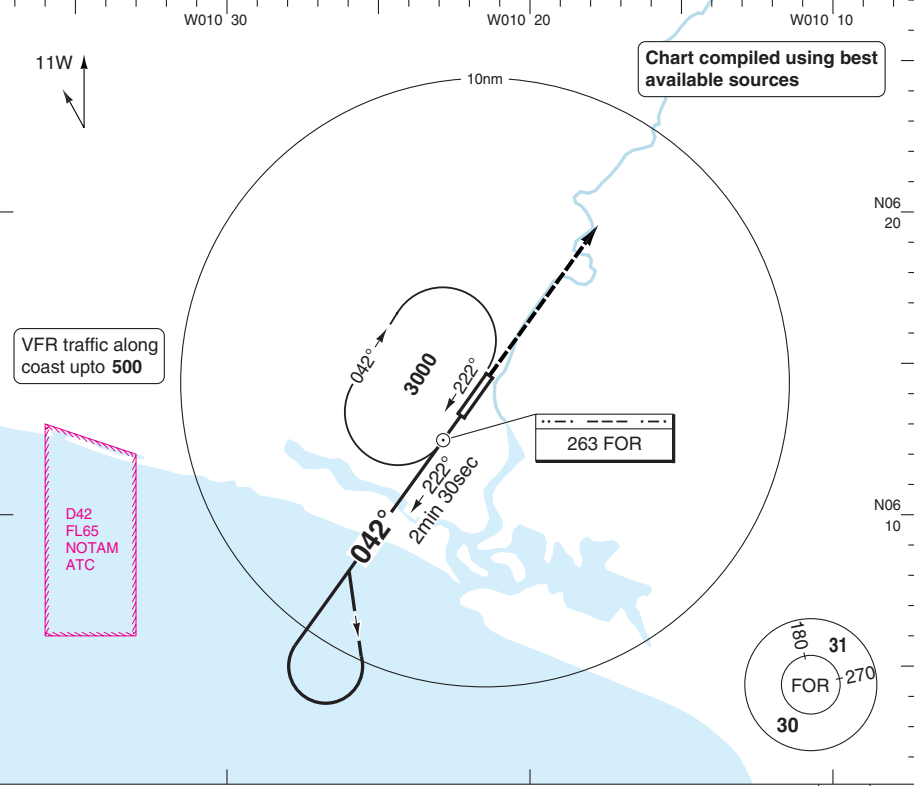
Change: New spec.

# NDB RWY 04

## Roberts INTL MONROVIA

Roberts APP 124.5	TWR 118.3	GND 121.9	OPS 131.4
----------------------	--------------	--------------	--------------

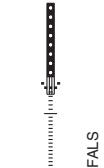
NDB 263 FOR	FAT 042°	THR Elev 29	AD Elev 31	TL FL50	TA 3000
-------------	----------	-------------	------------	---------	---------



nm	12	11	10	9	8	7	6	5	4	3	2	1	0
----	----	----	----	---	---	---	---	---	---	---	---	---	---

ACFT	<b>NDB+DME</b>	<b>Note:</b> Circling NA
A		
B	<b>370</b> (340)	
C	800m	
D		

LDA 3352x45  
10997x148ft  
V 2.6°



GS	80	100	120	140	160
ROD 3.0°	430	540	640	750	850

Change: New spec.

© Navtech - gjr503iaip00

50 - 3

Reverse side blank

## JAR-OPS Landing Minima

Roberts INTL **MONROVIA**

The following Minima is for Public Transport aircraft and conforms to JAR-OPS1 regulations.

STRAIGHT-IN APPROACH		C				D			
R/W	Procedure	DA/ MDA QNH ft	DH/ MDH QFE ft	RVR m	RVR No ALS m	DA/ MDA QNH ft	DH/ MDH QFE ft	RVR m	RVR No ALS m
04	ILS	230	200	550	1000	230	200	550	1000
04	LOC	330	310	1000	1800	330	310	1400	2000
04	VOR/DME	450	420	1000	1800	450	420	1400	2000
04	NDB	370	340	1000	1800	370	340	1400	2000

Notes:

CIRCLING		C			D		
R/W	Procedure	MDA QNH ft	MDH QFE ft	Vis m	MDA QNH ft	MDH QFE ft	Vis m
Not authorised							

Notes:

TAKE-OFF		C		D	
Runway	Facilities	RVR	Vis	RVR	Vis
04/22	REDL and/or RCL	400	-	400	-
04/22	Nil (Day only)	500	-	500	-

Notes:

## JAR-OPS Landing Minima

Roberts INTL **MONROVIA**

The following Minima is for Public Transport aircraft and conforms to JAR-OPS1 regulations.

STRAIGHT-IN APPROACH		A				B			
R/W	Procedure	DA/ MDA QNH ft	DH/ MDH QFE ft	RVR m	RVR No ALS m	DA/ MDA QNH ft	DH/ MDH QFE ft	RVR m	RVR No ALS m
04	ILS	230	200	550	1000	230	200	550	1000
04	LOC	330	310	900	1500	330	310	1000	1500
04	VOR/DME	450	420	900	1500	450	420	1000	1500
04	NDB	370	340	900	1500	370	340	1000	1500

Notes:

CIRCLING		A			B		
R/W	Procedure	MDA QNH ft	MDH QFE ft	Vis m	MDA QNH ft	MDH QFE ft	Vis m
Not authorised							

Notes:

TAKE-OFF		A		B	
Runway	Facilities	RVR	Vis	RVR	Vis
04/22	REDL and/or RCL	400	-	400	-
04/22	Nil (Day only)	500	-	500	-

Notes: