

Airport information:

Country: Mozambique

City: BEIRA INTL

Coordinates: S 19 47.7, E034 57.3

Elevation: 33

Customs: Customs

Fuel: 100LL, Jet

RFF: CAT 6

hours: H24

Runways:

Runway 06

Takeoff length: 920, Landing length: 920

Runway 12

Takeoff length: 2400, Landing length: 2400

Runway 24

Takeoff length: 920, Landing length: 920

Runway 30

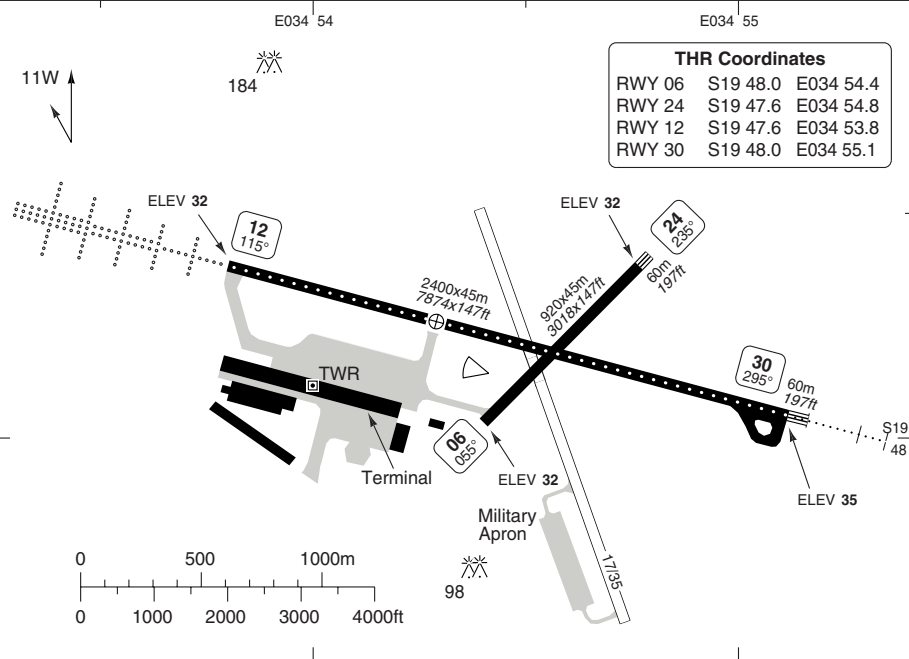
Takeoff length: 2400, Landing length: 2400

AERODROME

Beira GND
121.7

TWR
118.1

AD Elev 33 | ARP: S19 47.7 E034 57.3 | RFF: CAT 7 | AD HR: 04-18



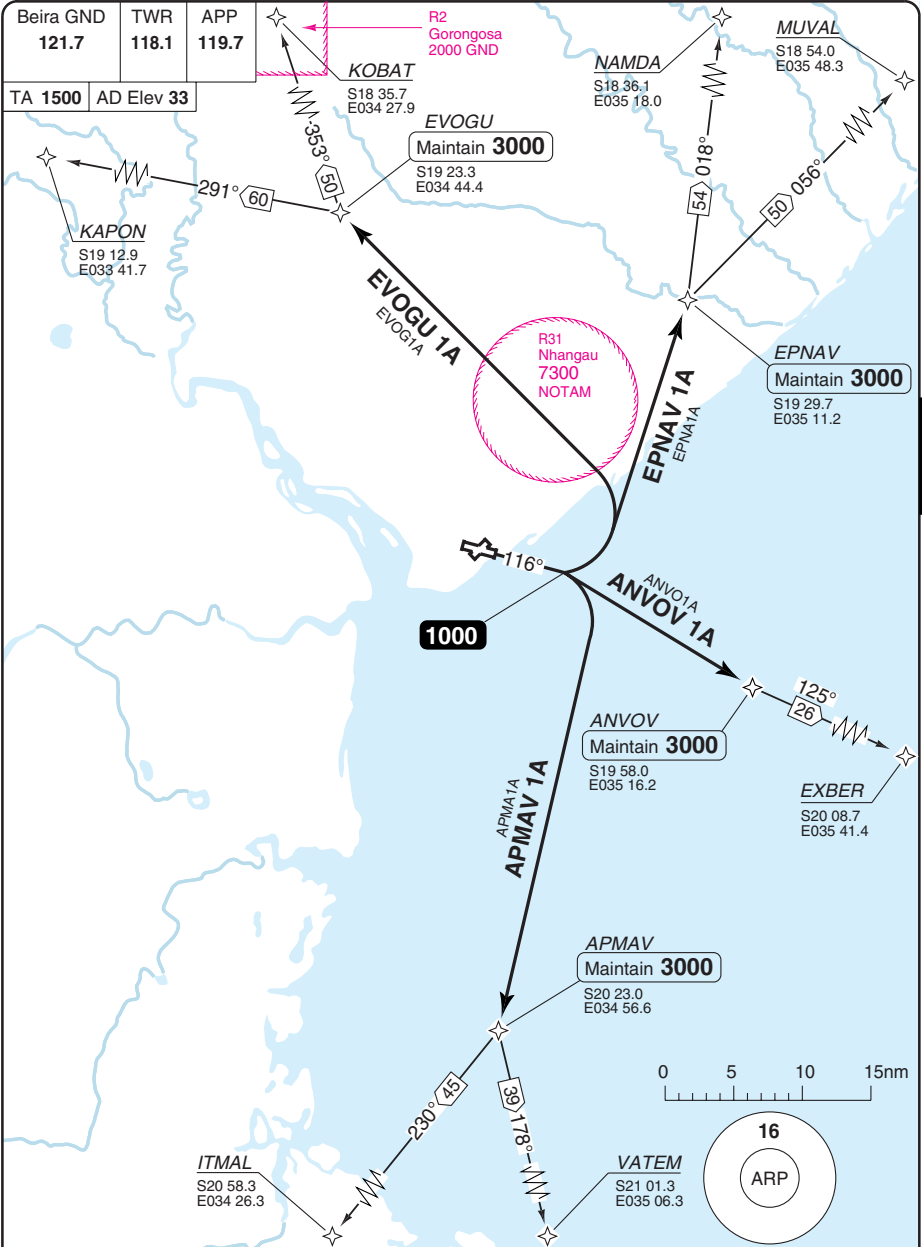
RWY	Slope	TORA m/ft	LDA m/ft	ALS	REDL	RCLL	Additional
06	0	920 / 3018	920 / 3018	-	-	-	-
24	0	920 / 3018	920 / 3018	-	-	-	-
12	0	2400 / 7874	2400 / 7874	H-C	H ②	30m ②	P 3°
30	0	2400 / 7874	2400 / 7874	H-E ①	H ②	30m ②	P 3°

① 420m ② White

EU OPS		TAKE OFF MINIMA	
RWY	Facilities	RVR A B C D	
12/30	RCL (day only) or RCL + REDL	400m	
	NIL (day only)	500m	

SID RWY 12 **RNAV** GNSS

INTL BEIRA



30 - 1

© Navtech - fqbr01daorg0

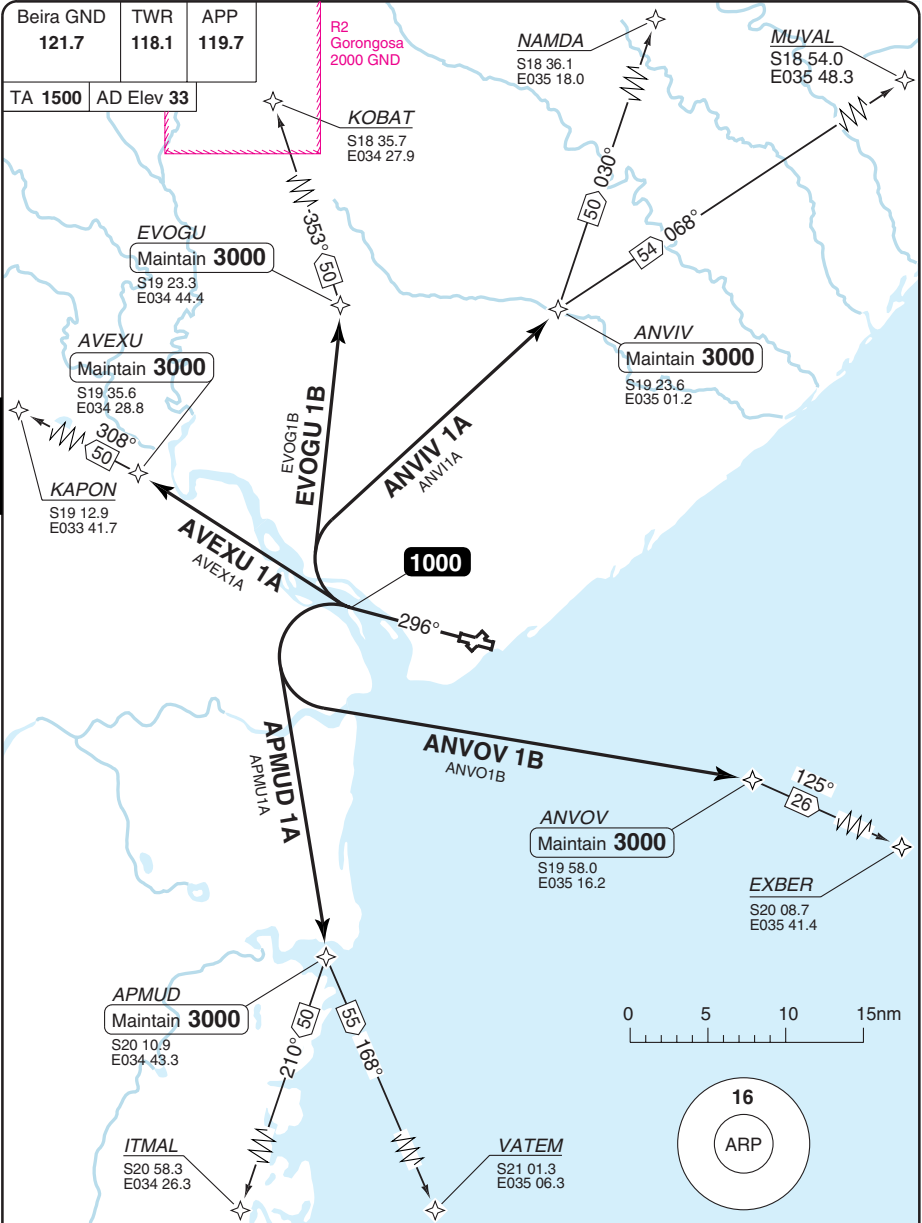
SID	Routeing	Altitudes
ANVOV 1A	Climb on 116° to 1000 - ANVOV - EXBER.	ANVOV Maintain 3000 .
APMAV 1A	Climb on 116° to 1000 - APMVA - VATEM or ITMAL.	APMAV Maintain 3000 .
EPNAV 1A	Climb on 116° to 1000 - EPNVA - NAMDA or MUVAL.	EPNAV Maintain 3000 .
EVOGU 1A	Climb on 116° to 1000 - EVOGU - KAPON or KOBAT.	EVOGU Maintain 3000 .

Change: New spec.

THIS CHART IS A PART OF NAVIGRAPH NDAC AND IS INTENDED FOR FLIGHT SIMULATION USE ONLY

SID RWY 30 **RNAV** GNSS

INTL BEIRA



SID	Routing	Altitudes
ANVIV 1A	Climb on 296° to 1000 - ANVIV - NAMDA or MUVAL.	ANVIV Maintain 3000 .
ANVOV 1B	Climb on 296° to 1000 - ANVOV - EXBER.	ANVOV Maintain 3000 .
APMUD 1A	Climb on 296° to 1000 - APMUD - VATEM or ITMAL.	APMUD Maintain 3000 .
AVEXU 1A	Climb on 296° to 1000 - AVEXU - KAPON.	AVEXU Maintain 3000 .
EVOGU 1B	Climb on 296° to 1000 - EVOGU - KOBAT.	EVOGU Maintain 3000 .

Change: New spec.

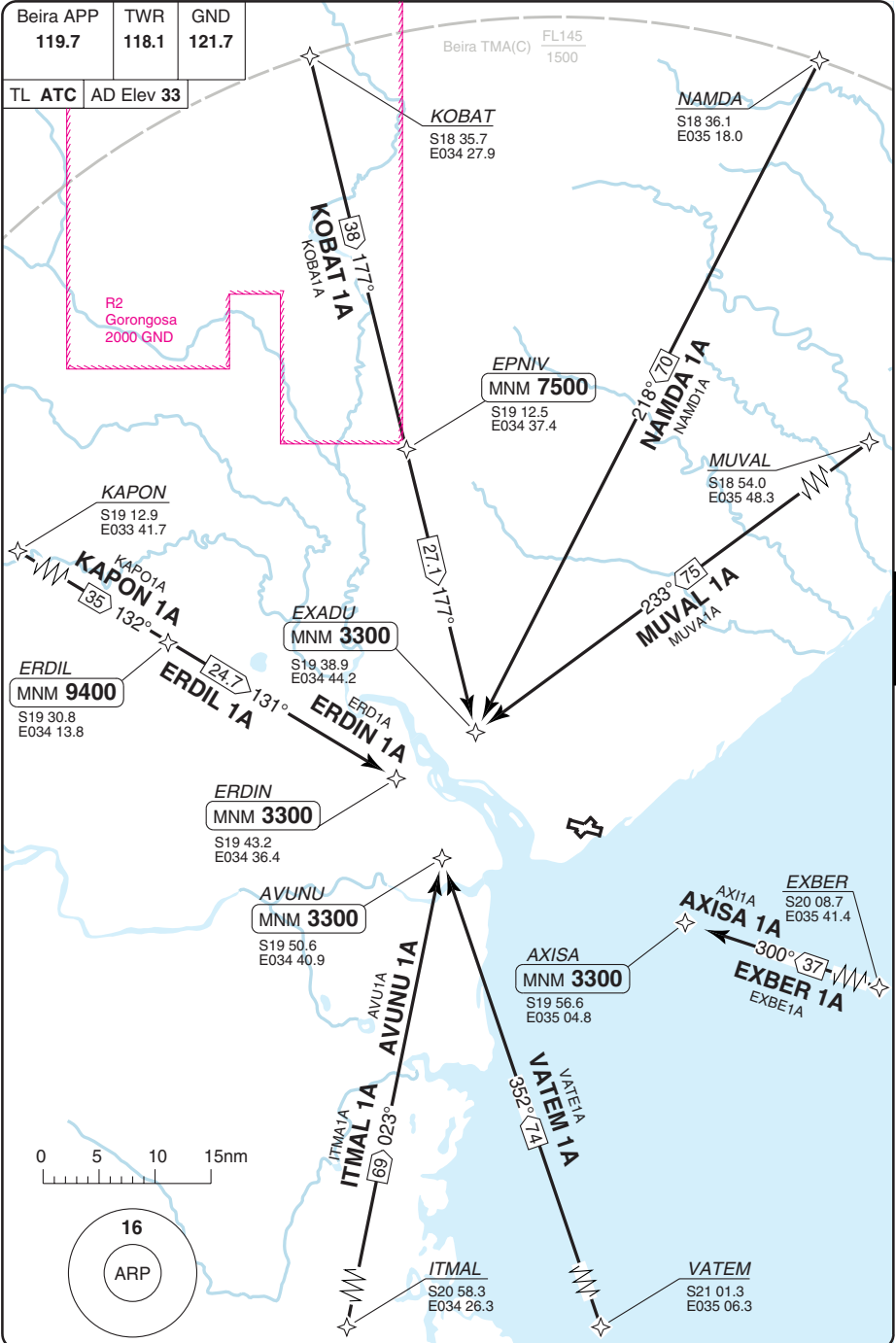
THIS CHART IS A PART OF NAVIGRAPH NDAC AND IS INTENDED FOR FLIGHT SIMULATION USE ONLY

30 - 2

© Navitech - fqbr02daorg0

STAR RWY 12 **RNAV** GNSS

INTL BEIRA



40 - 1

© Navtech - fqbr01aaoorg0

Change: New spec.

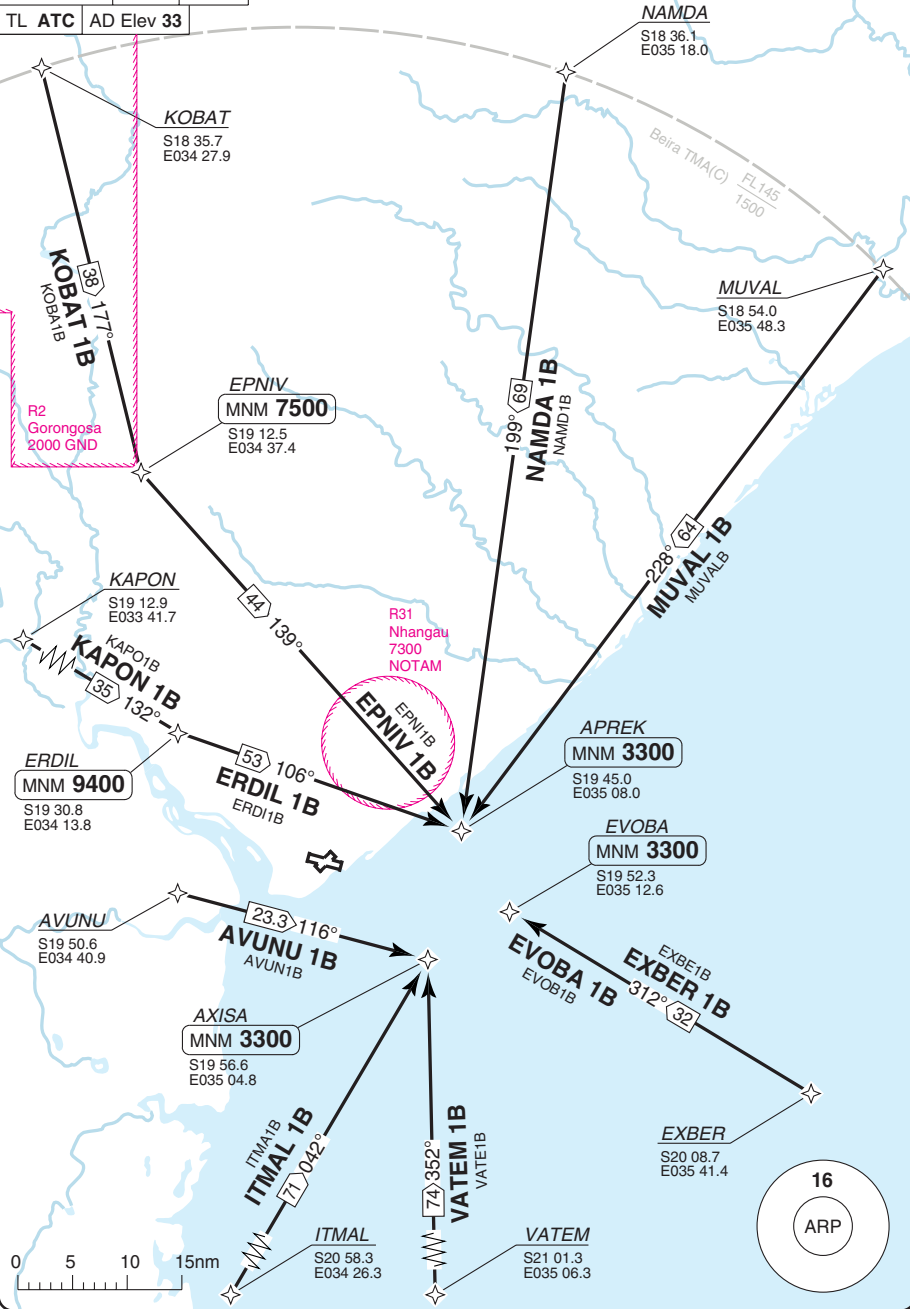
THIS CHART IS A PART OF NAVIGRAPH NDAC AND IS INTENDED FOR FLIGHT SIMULATION USE ONLY

STAR RWY 30 **RNAV** GNSS

INTL BEIRA

Beira APP	TWR	GND
119.7	118.1	121.7

TL ATC AD Elev 33



40 - 2

© Navitech - fqbr02aaorg0

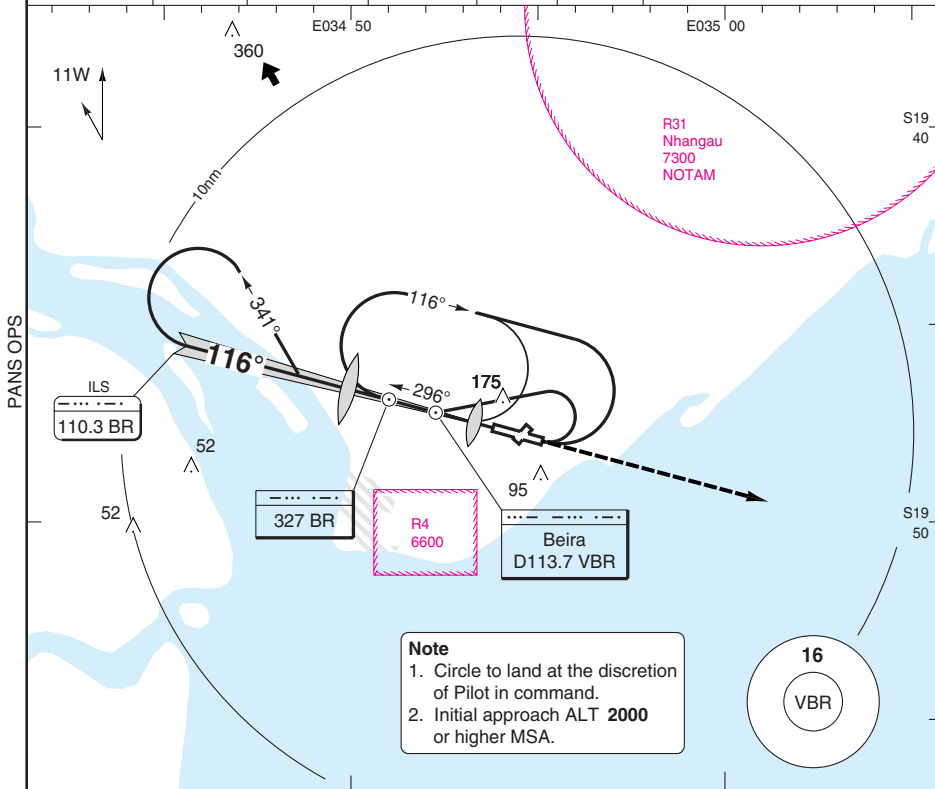
Change: New spec.

THIS CHART IS A PART OF NAVIGRAPH NDAC AND IS INTENDED FOR FLIGHT SIMULATION USE ONLY

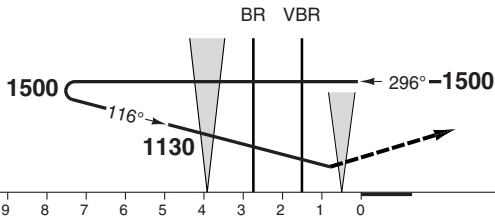
ILS RWY 12 NDB

Beira APP 119.7	TWR 118.1	GND 121.7
--------------------	--------------	--------------

ILS 110.3 BR	FAT 116°	THR Elev 32	AD Elev 33	TL ATC	TA 1500
--------------	----------	-------------	------------	--------	---------



Note
1. Circle to land at the discretion of Pilot in command.
2. Initial approach ALT **2000** or higher MSA.

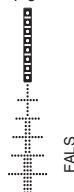


Climb to **1500** on 116°, then follow ATC instruction.

ACFT	ILS
A	240 (200) 550m
B	240 (200) 550m
C	240 (203) 550m
D	250 (214) 550m

Note: Circling NA

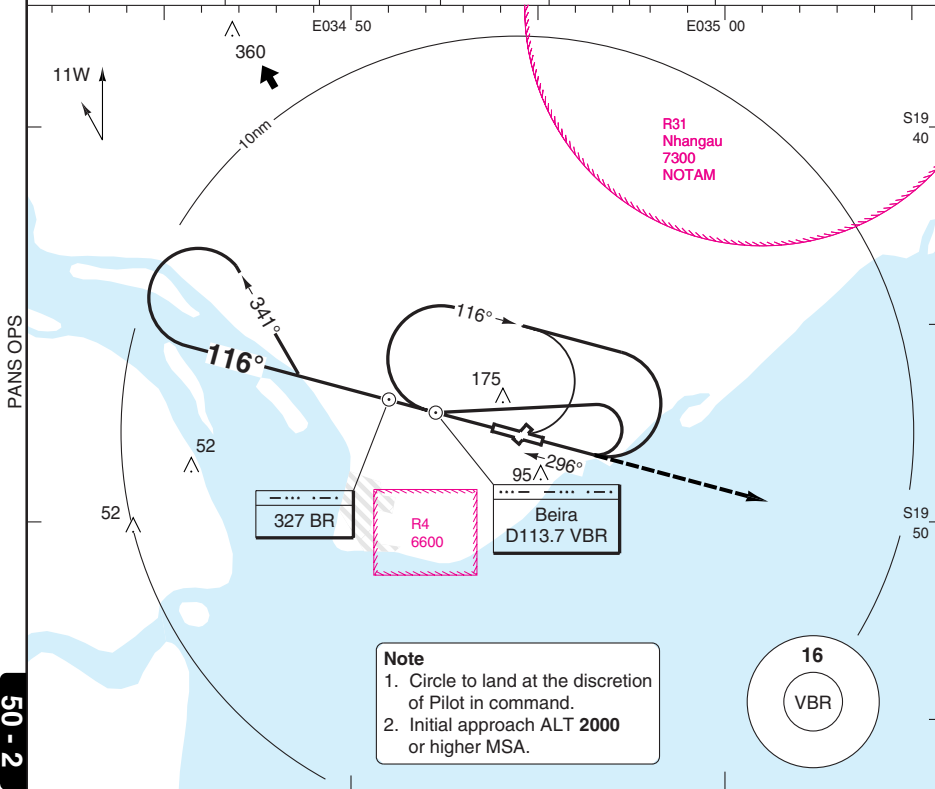
LDA 2400x45
7873x147ft
P 3°



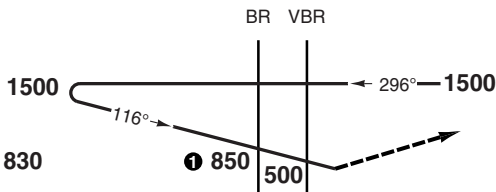
VOR RWY 12 NDB

Beira APP 119.7	TWR 118.1	GND 121.7
--------------------	--------------	--------------

VOR/DME 113.7 VBR | FAT 116° | THR Elev 32 | AD Elev 33 | TL ATC | TA 1500



50 - 2



1 NDB: 830

1 850

500

Climb to 1500 on 116°, then follow ATC instruction.

nm 10 9 8 7 6 5 4 3 2 1 0

ACFT	VOR+NDB
A	
B	430 (398)
C	1100m
D	

GS	80	100	120	140	160
ROD 2.7°	380	480	570	660	760
BR +20s	730	700	670	640	600
+40s	600	540	480	-	-
+60s	480	-	-	-	-
BR- 430	1:07	0:53	0:44	0:38	0:33

LDA 2400x45
7873x147ft
P 3°

Note: Circling NA



FALS

© Navitech - fqbr02iaip00

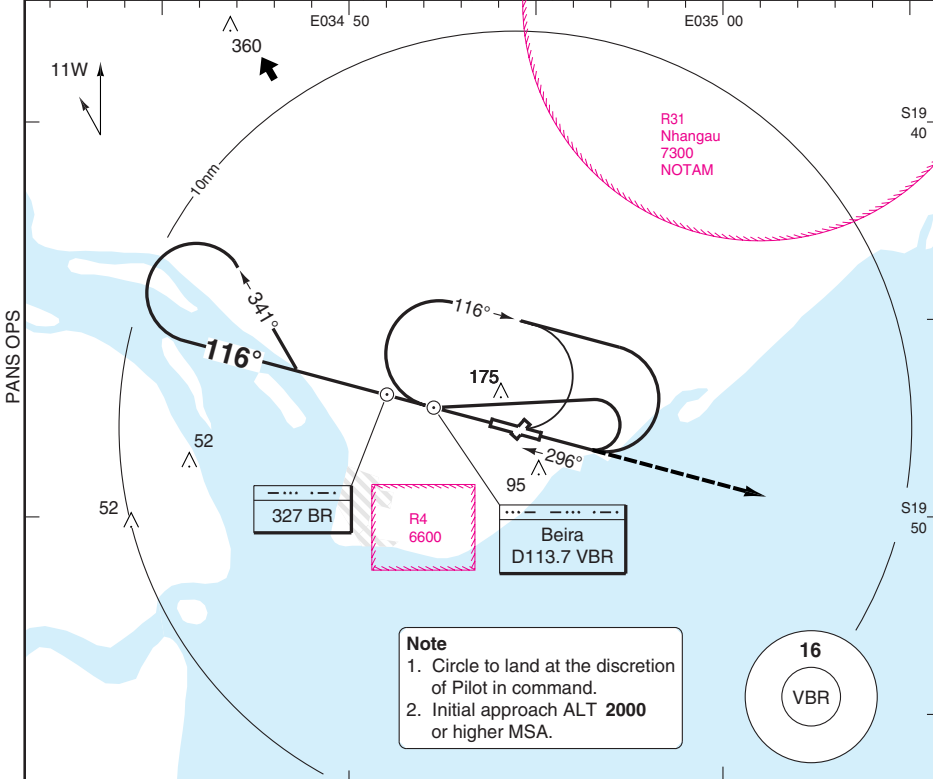
Change: New spec.

THIS CHART IS A PART OF NAVIGRAPH NDAC AND IS INTENDED FOR FLIGHT SIMULATION USE ONLY

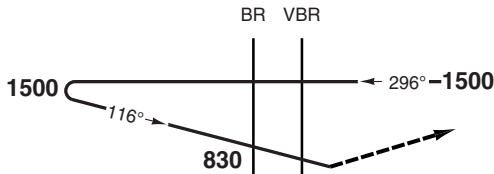
NDB RWY 12

Beira APP 119.7	TWR 118.1	GND 121.7
--------------------	--------------	--------------

NDB 327 BR	FAT 116°	THR Elev 32	AD Elev 33	TL ATC	TA 1500
------------	----------	-------------	------------	--------	---------



50 - 3



nm 10 9 8 7 6 5 4 3 2 1 0

ACFT	NDB
A	380 (348) 900m
B	390 (358) 900m
C	410 (378) 1000m
D	430 (398) 1100m

Note: Circling NA

GS	80	100	120	140	160
ROD 2.6°	370	460	560	650	740
BR +20s	710	680	650	620	590
+40s	590	530	470	-	-
+60s	470	-	-	-	-
BR- 430	1:05	0:52	0:44	0:37	0:32

LDA 2400x45
7873x147ft



FALS

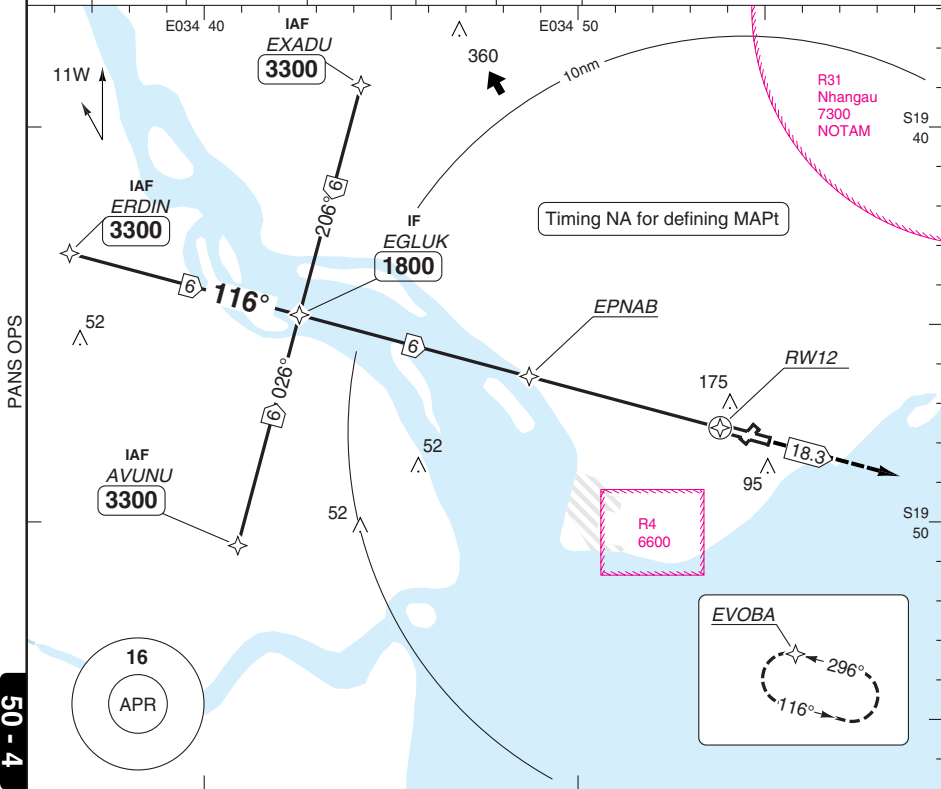
© Navtech - fqbr03iaip00

Change: New spec.

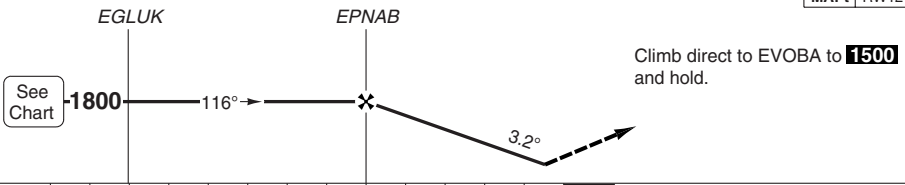
RNAV (GNSS) RWY 12

Beira APP	TWR	GND
119.7	118.1	121.7

RNAV	FAT 116°	THR Elev 32	AD Elev 33	TL ATC	TA 1500
------	----------	-------------	------------	--------	---------



MAPt RWY12



nm 13 12 11 10 9 8 7 6 5 4 3 2 1 0 TCH 50

ACFT	LNAV/VNAV	LNAV
A		
B	450 (420) 1200m	420 (390) 1100m
C		
D		

Note: Circling NA

THR	3.2° ALT	LDA 2400x45 7873x147ft
12		
9.4	3300	P 3°
7	2490	
6	2150	
5	1800	
4	1460	
3	1120	
2	770	
1.0	420	

FALS

© Navitech - fqbr04iaip00
EU OPS

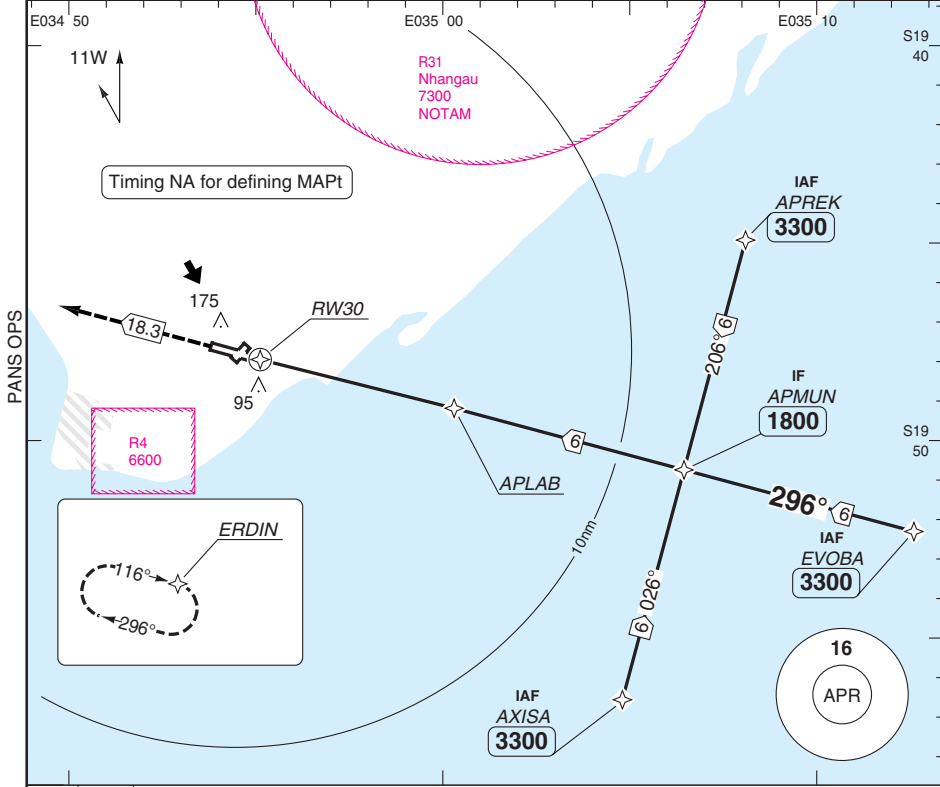
GS	80	100	120	140	160
ROD 3.2°	460	580	690	810	920

Change: New spec.

RNAV (GNSS) RWY 30

Beira APP 119.7	TWR 118.1	GND 121.7
---------------------------	---------------------	---------------------

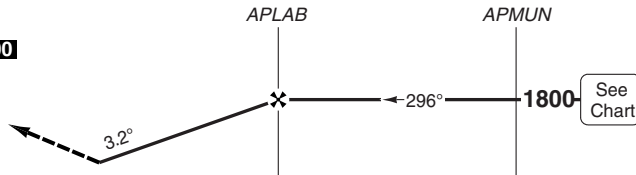
RNAV	FAT 296°	THR Elev 35	AD Elev 33	TL ATC	TA 1500
------	-----------------	--------------------	-------------------	---------------	----------------



50 - 5

MAPt RW30

Climb direct to ERDIN to **1500** and hold.



TCH 50

ACFT	LNAV/VNAV	LNAV
A		
B	450 (420) 1500m	350 (320) 1000m
C		
D		

Note: Circling NA

THR	3.2° ALT	LDA 2400x45 7873x147ft
30	3300	P 3°
9.4	3300	
7	2490	
6	2150	
5	1800	
4	1460	
3	1120	
2	780	
0.8	350	

GS	80	100	120	140	160
ROD 3.2°	460	580	690	810	920

Change: New spec.

JAR-OPS Landing Minima

BEIRA

The following Minima is for Public Transport aircraft and conforms to JAR-OPS1 regulations.

STRAIGHT-IN APPROACH		C				D			
R/W	Procedure	DA/ MDA QNH ft	DH/ MDH QFE ft	RVR m	RVR No ALS m	DA/ MDA QNH ft	DH/ MDH QFE ft	RVR m	RVR No ALS m
12	ILS	240	210	600	1000	250	220	600	1000
12	VOR	430	400	1000	1800	430	400	1400	2000
12	NDB	410	380	1000	1800	430	400	1400	2000
12	RNAV (L/VNAV)	460	420	1000	1800	460	420	1400	2000
12	RNAV (LNAV)	430	390	1000	1800	430	390	1400	2000
30	RNAV (L/VNAV)	460	420	1400	1800	460	420	1600	2000
30	RNAV (LNAV)	360	320	1400	1800	360	320	1600	2000

Notes:

CIRCLING		C			D		
R/W	Procedure	MDA QNH ft	MDH QFE ft	Vis m	MDA QNH ft	MDH QFE ft	Vis m
	RNAV procs	N/A	N/A	N/A	N/A	N/A	N/A
	All other procs (1)						

Notes:

(1) Circling at the discretion of the pilot in command.

TAKE-OFF		C		D	
Runway	Facilities	RVR	Vis	RVR	Vis
12/30	REDL and/or RCL	400	-	400	-
12/30	Nil (Day only)	500	-	500	-

Notes:

JAR-OPS Landing Minima

BEIRA

The following Minima is for Public Transport aircraft and conforms to JAR-OPS1 regulations.

STRAIGHT-IN APPROACH		A				B			
R/W	Procedure	DA/ MDA QNH ft	DH/ MDH QFE ft	RVR m	RVR No ALS m	DA/ MDA QNH ft	DH/ MDH QFE ft	RVR m	RVR No ALS m
12	ILS	240	200	550	1000	240	200	550	1000
12	VOR	430	400	900	1500	430	400	1000	1500
12	NDB	380	350	900	1500	390	360	1000	1500
12	RNAV (L/VNAV)	460	420	900	1500	460	420	1000	1500
12	RNAV (LNAV)	430	390	900	1500	430	390	1000	1500
30	RNAV (L/VNAV)	460	420	1200	1500	460	420	1300	1500
30	RNAV (LNAV)	360	320	1200	1500	360	320	1300	1500

Notes:

CIRCLING		A			B		
R/W	Procedure	MDA QNH ft	MDH QFE ft	Vis m	MDA QNH ft	MDH QFE ft	Vis m
	RNAV procs	N/A	N/A	N/A	N/A	N/A	N/A
	All other procs (1)	N/A	N/A	N/A	N/A	N/A	N/A

Notes:

(1) Circling at the discretion of the pilot in command.

TAKE-OFF		A		B	
Runway	Facilities	RVR	Vis	RVR	Vis
12/30	REDL and/or RCL	400	-	400	-
12/30	Nil (Day only)	500	-	500	-

Notes: