

## Airport information:

Country: Sweden

City: ESKILSTUNA

Coordinates: N 59° 21.1', E016 42.5

Elevation: 139

Customs:

Fuel: 100LL, Jet A1

RFF: CAT 3 O/R

hours: AD: MON-FRI 07-11, 12-16. AFIS: MON-FRI 07-11, 12-16

## Runways:

Runway 18

Takeoff length: 1886, Landing length: 1886

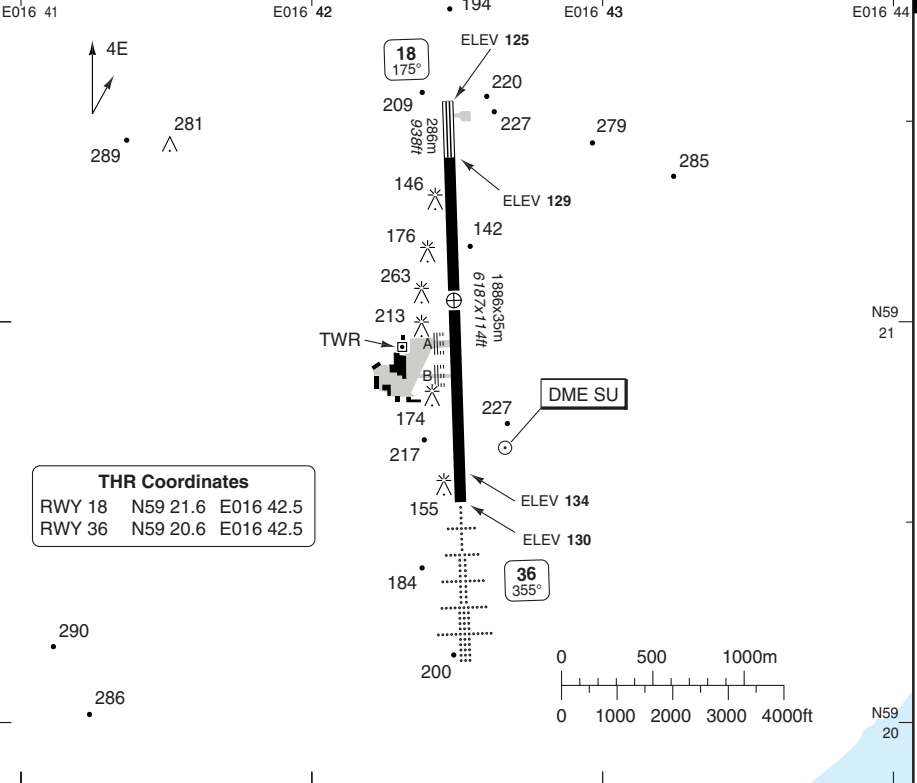
Runway 36

Takeoff length: 1886, Landing length: 1886

# AERODROME

Eskilstuna INFO  
**126.85**

AD Elev **139** | ARP: N59 21.1 E016 42.5 | RFF: CAT 3 O/R | AD HR: MON-FRI 07-11, 12-16



RWY	Slope	TORA m/ft	LDA m/ft	ALS	REDL	Additional
18	0	1886 / 6187	1886 / 6187	-	H	AP 2.86° (49)
36	0	1886 / 6187	1886 / 6187	H-C	H	AP 3° (49)

**ARCAL:** 126.85 transmits for 10sec

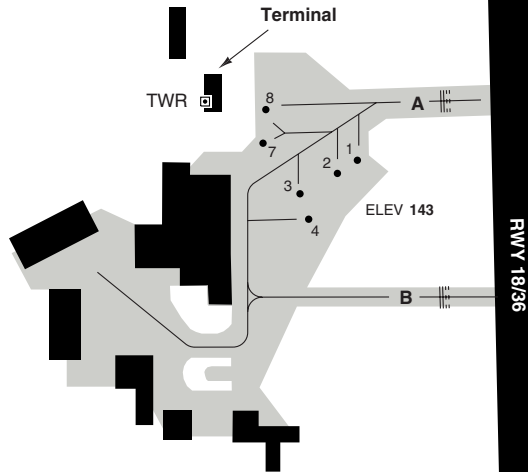
**EU OPS TAKE OFF MINIMA**

RWY	Facilities	RVR		
		A	B	C
18/36	RCL (day only) or RCL + REDL	400m		
	NIL (day only)	500m		

## AERODROME

Eskilstuna INFO  
126.85

10 - 2



RWY 18/36

## GENERAL INFORMATION

## 1. TWY RESTRICTION

TWY B width 7.5m /24ft (daylight only VFR).

## 2. OMNIDIRECTIONAL DEPARTURE PROC

RWY 18

Climb on 175° with MNM 350ft/nm (5.6%)  
to MNM turning ALT **600** .

Continue climb to appropriate MSA.

Significant OBST:

Terrain 263ft 179°/2250m from THR

RWY 36

Climb on 355° with MNM 360ft/nm (5.9%)  
to MNM turning ALT **600** .

Continue climb to appropriate MSA.

Significant OBST:

Terrain 279ft 004°/2100m from THR

Terrain 296ft 350°/2450m from THR

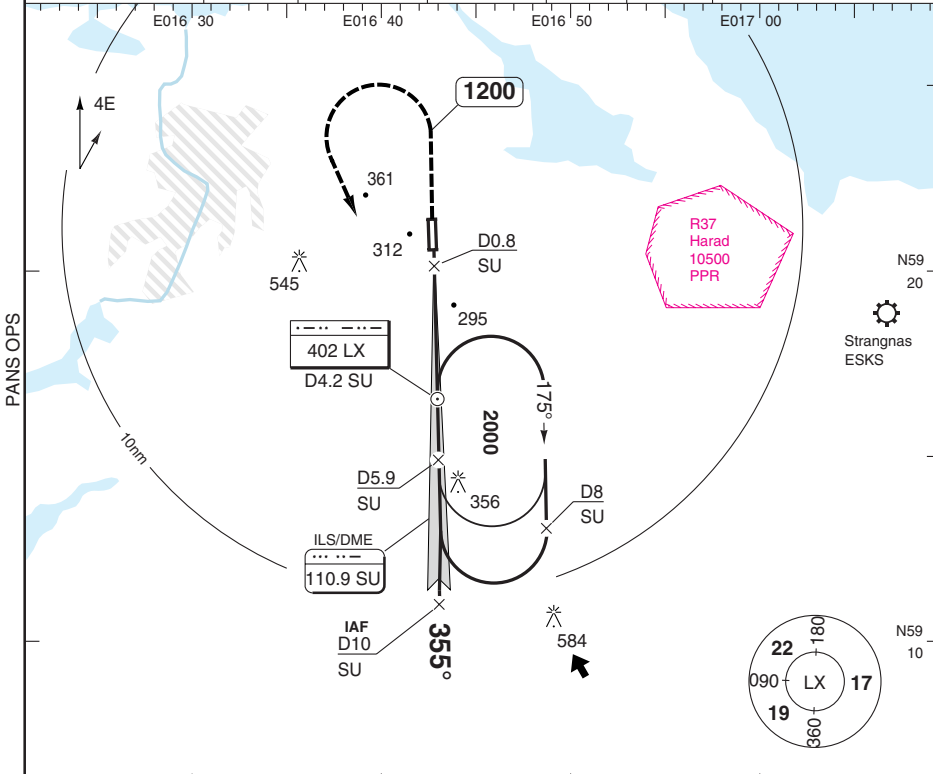
## 3. NOISE ABATEMENT PROCEDURE

Overflight of the built-up areas of Kjlula  
should be avoided below 2000ft GND.

**ILS RWY 36**

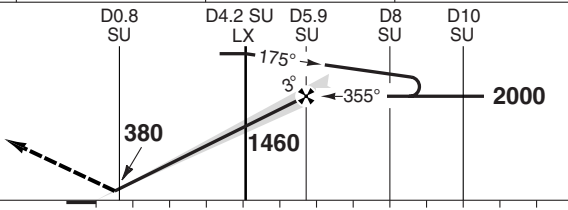
Eskilstuna INFO  
**126.85**

ILS/DME **110.9 SU** | FAT **355°** | THR Elev **130** | AD Elev **139** | TL **ATC** | TA **5000**



MAPt D0.8 SU

Climb on 355° to **1200**,  
 turn left to **LX**  
 climbing to **2000**.



TCH 51

ACFT	ILS+DME	LOC+DME	Circling
A	<b>330</b> (200) 550m	<b>550</b> (420) 1200m	<b>610</b> (480) 1.5km
B			<b>660</b> (530) 1.6km
C			<b>940</b> (810) 2.4km
D	<b>NA</b>	<b>NA</b>	<b>NA</b>

DME SU	3.0° ALT	LDA 1886x35 6187x114ft AP 3° (49)
5.9	<b>2000</b>	
5	<b>1720</b>	
4	<b>1410</b>	
3	<b>1090</b>	
2	<b>770</b>	
1.3	<b>550</b>	

GS	80	100	120	140	160
ROD 3.0°	430	530	640	740	850

Change: MSA, Min

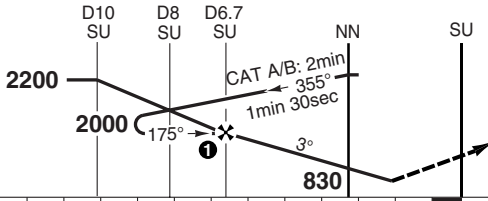
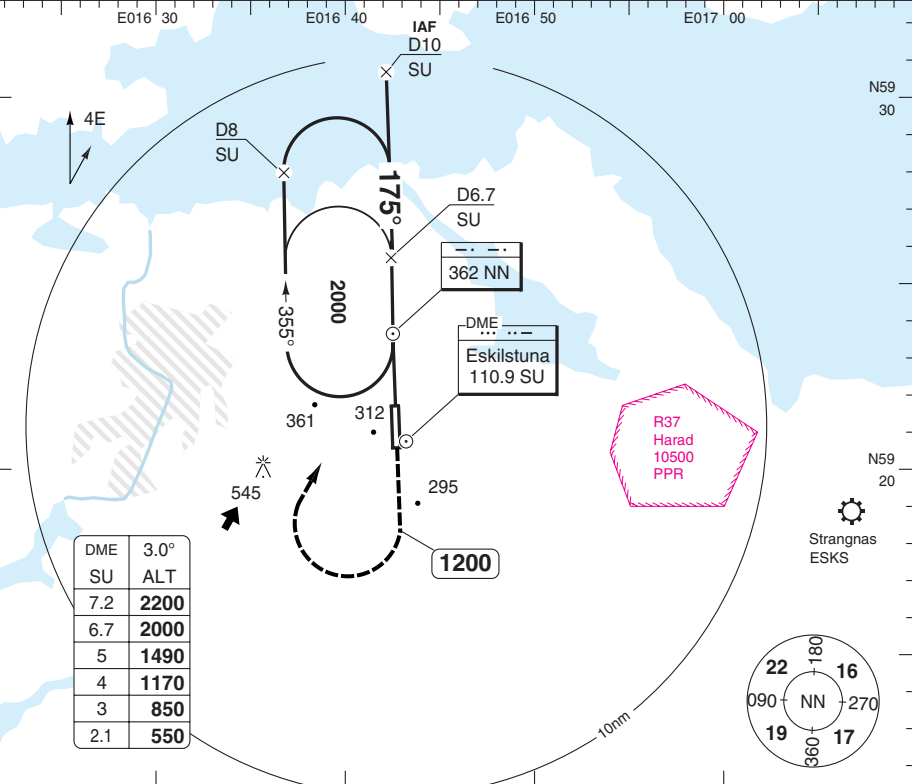
**NDB RWY 18**

Eskilstuna INFO  
**126.85**

NDB 362 NN | FAT 175° | THR Elev 129 | AD Elev 139 | TL ATC | TA 5000

PANS OPS

50 - 2



Climb on 175° to 1200, turn right to **NN** climbing to **2000**.

1 If DME U/S: FAF at NN **830**

nm	12	11	10	9	8	7	6	5	4	3	2	1	0	
ACFT	NDB+DME <sup>a</sup>   NDB   Circling <sup>b</sup>   Circling <sup>b</sup>   GS   80   100   120   140   160													
A	550 (430) 1500m		550 (430) 2000m		610 (480) 1.5km		610 (480) 2.0km		ROD 3.0°	430	540	640	750	860
B	550 (430) 2000m		660 (530) 1.6km		660 (530) 2.0km		NN +20s	<b>690</b>	<b>660</b>	<b>620</b>	<b>590</b>	-		
C	550 (430) 2000m		940 (810) 2.4km		940 (810) 2.4km		NN- <b>550</b>	0:40	0:31	0:26	0:22	0:19		
D	NA		NA		NA		FAF-MAPT <sup>a</sup>	4:20	3:28	2:53	2:28	2:10		

LDA 1886x35  
 6187x114ft  
 AP 2.86° (49)



<sup>a</sup> After NDB.

NALS



## JAR-OPS Landing Minima

## ESKILSTUNA

The following Minima is for Public Transport aircraft and conforms to JAR-OPS1 regulations.

STRAIGHT-IN APPROACH		C				D			
R/W	Procedure	DA/ MDA QNH ft	DH/ MDH QFE ft	RVR m	RVR No ALS m	DA/ MDA QNH ft	DH/ MDH QFE ft	RVR m	RVR No ALS m
18	NDB	560	430	1800	N/A	N/A	N/A	N/A	N/A
36	ILS/DME	330	200	550	1000	N/A	N/A	N/A	N/A
36	LLZ/DME	550	420	1000	1800	N/A	N/A	N/A	N/A
36	NDB	550	420	1000	1800	N/A	N/A	N/A	N/A

Notes:

CIRCLING		C			D		
R/W	Procedure	MDA QNH ft	MDH QFE ft	Vis m	MDA QNH ft	MDH QFE ft	Vis m
All procs		950	810	2400	N/A	N/A	N/A

Notes:

TAKE-OFF		C		D	
Runway	Facilities	RVR	Vis	RVR	Vis
18/36	REDL and/or RCL	400	-	N/A	N/A
18/36	Nil (Day only)	500	-	N/A	N/A

Notes:

## JAR-OPS Landing Minima

## ESKILSTUNA

The following Minima is for Public Transport aircraft and conforms to JAR-OPS1 regulations.

STRAIGHT-IN APPROACH		A				B			
R/W	Procedure	DA/ MDA QNH ft	DH/ MDH QFE ft	RVR m	RVR No ALS m	DA/ MDA QNH ft	DH/ MDH QFE ft	RVR m	RVR No ALS m
18	NDB	560	430	1500	N/A	560	430	1500	N/A
36	ILS/DME	330	200	550	1000	330	200	550	1000
36	LLZ/DME	550	420	900	1500	550	420	1000	1500
36	NDB	550	420	900	1500	550	420	1000	1500

Notes:

CIRCLING		A			B		
R/W	Procedure	MDA QNH ft	MDH QFE ft	Vis m	MDA QNH ft	MDH QFE ft	Vis m
All procs		620	480	1500	670	530	1600

Notes:

TAKE-OFF		A		B	
Runway	Facilities	RVR	Vis	RVR	Vis
18/36	REDL and/or RCL	400	-	400	-
18/36	Nil (Day only)	500	-	500	-

Notes: