

## Airport information:

Country: Poland

City: LODZ

Coordinates: N 51° 43.3', E019 23.9

Elevation: 607

Customs: Customs

Fuel: Jet A1, 100LL

RFF: CAT 7, CAT 8 O/R

hours: ATC By NOTAM, AD HO

## Runways:

Runway 07L

Takeoff length: 2500, Landing length: 2500

Runway 25R

Takeoff length: 2500, Landing length: 2500

# AERODROME

10 - 1

Lodz TWR  
124.225

AD Elev 607 ARP: N51 43.3 E019 23.9 RFF: CAT 7, CAT 8 O/R. MON-FRI 07-15 AD HR: See NOTAM

E019 22

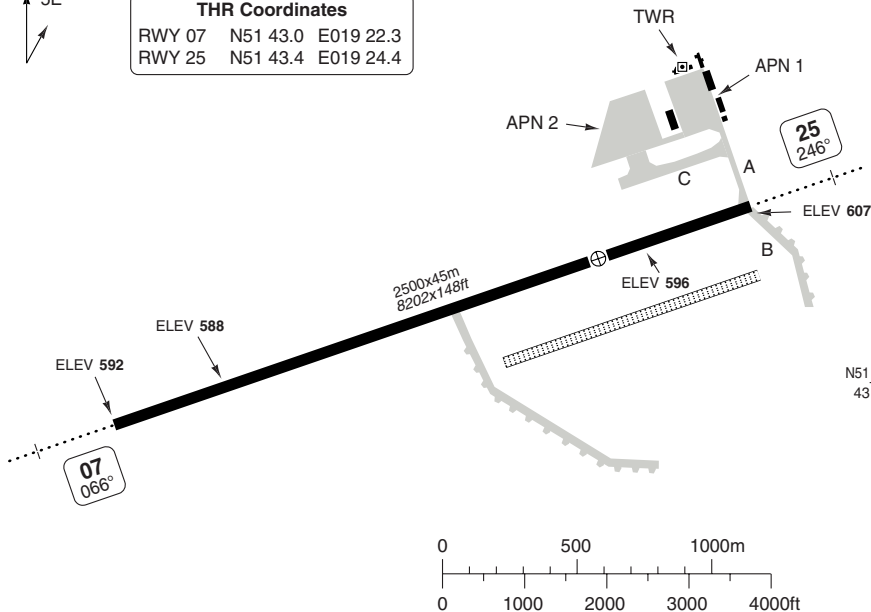
E019 23

E019 24

N51  
44



THR Coordinates			
RWY 07	N51 43.0	E019 22.3	
RWY 25	N51 43.4	E019 24.4	



N51  
43

RWY	Slope	TORA m/ft	LDA m/ft	ALS	REDL	Additional
07	+0.2	2500 / 8202	2500 / 8202	H-E ①	H	P 3°, REIL
25	-0.2	2500 / 8202	2500 / 8202	H-E ①	H	REIL

① 420m.

**EU OPS**

**TAKE OFF MINIMA**

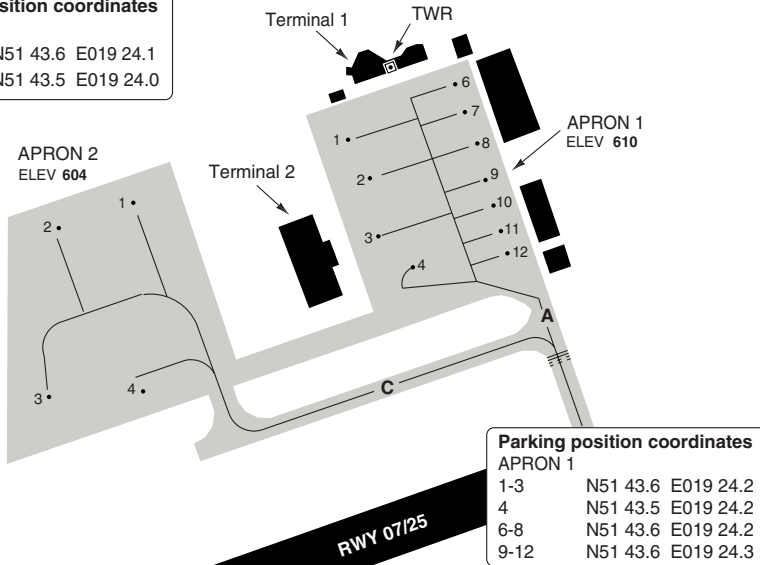
RWY	Facilities	RVR			
		A	B	C	D
07/25	RCL (day only) or RCL + REDL	400m			
	NIL (day only)	500m			

# AERODROME Parking

10 - 2

**Parking position coordinates**  
APRON 2

1, 4	N51 43.6	E019 24.1
2, 3	N51 43.5	E019 24.0



**Parking position coordinates**  
APRON 1

1-3	N51 43.6	E019 24.2
4	N51 43.5	E019 24.2
6-8	N51 43.6	E019 24.2
9-12	N51 43.6	E019 24.3

## GENERAL INFORMATION

**1. TAXI**

ACFT with REF code C or higher may operate on the APN only in accordance to marshaller instructions.

**2. TWY RESTRICTION**

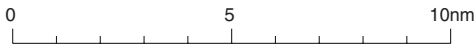
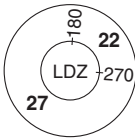
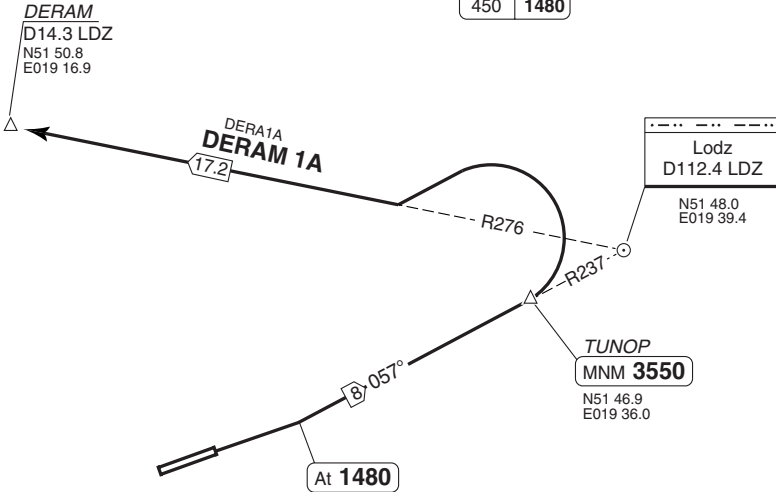
TWY B width 12m/ 39ft .

# SID RWY 07

Lodz TWR  
**124.225**

TA **6500** | AD Elev **607**

<i>m</i>	<i>ft</i>
<b>QNH</b>	<b>QNH</b>
2000	<b>6500</b>
1080	<b>3550</b>
450	<b>1480</b>



30 - 1

**NOTE:** Turn at TUNOP 25° bank angle.  
If unable to achieve SID profile restrictions request non standard departure from ATC before start-up.  
**SPEED:** MAX 250kt below FL100.  
**MNM CLIMB GRADIENT:** 7% to 1480. 5.7% to DERAM.

SID	Routeing	Altitudes
DERAM 1A	Climb on 066° - at 1480 intercept R237 LDZ - TUNOP - turn left - intercept R276 LDZ - DERAM	TUNOP MNM 3550

© Navitech - epll01daorg0

Change: New spec.

**THIS CHART IS A PART OF NAVIGRAPH NDAC AND IS INTENDED FOR FLIGHT SIMULATION USE ONLY**

# SID RWY 25

Lodz TWR  
124.225

TA 6500 | AD Elev 607

<i>m</i>	<i>ft</i>
2000	6500
500	1650

30 - 2

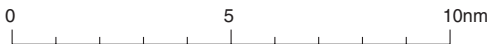
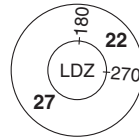
**DERAM**  
D14.3 LDZ  
N51 50.8  
E019 16.9

Lodz  
D112.4 LDZ  
N51 48.0  
E019 39.4

DERA2D  
**DERAM 2D**  
21.4 081°

**LL711**  
D7.5 LDZ  
N51 47.5  
E019 27.3

At 1650



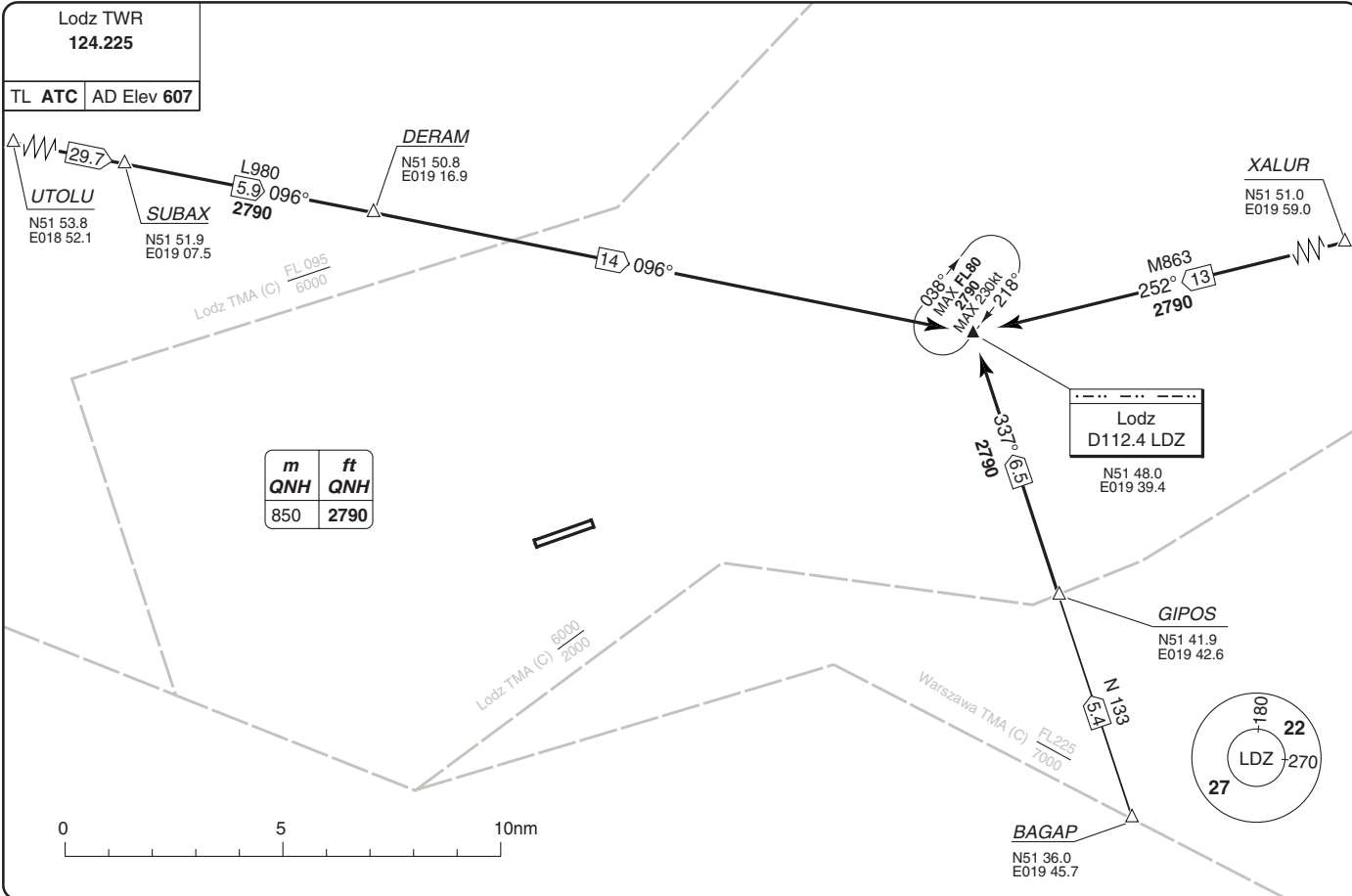
**NOTE:** Initial turn 20° bank angle. For turn at LL711 25° bank angle.  
If unable to achieve SID profile restrictions request non standard departure from ATC before start-up.  
**SPEED:** MAX 250kt below FL100.  
**MNM CLIMB GRADIENT:** 4.2%.

**SID**

**DERAM 2D**

**Routeing**

Climb on 246° - at 1650 turn right - intercept R261 LDZ - LL711 - turn left - intercept R276 LDZ - DERAM



ARRIVAL Routes

40 - 1 | 24 AUG 11

Poland - EPLL / LCJ  
Lublinek LODZ

# ILS RWY 25

Lodz TWR  
**124.225**

ILS/DME **110.5 LOD** | FAT **246°** | THR Elev **607 22hPa** | AD Elev **607 22hPa** | TL ATC | TA **6500**

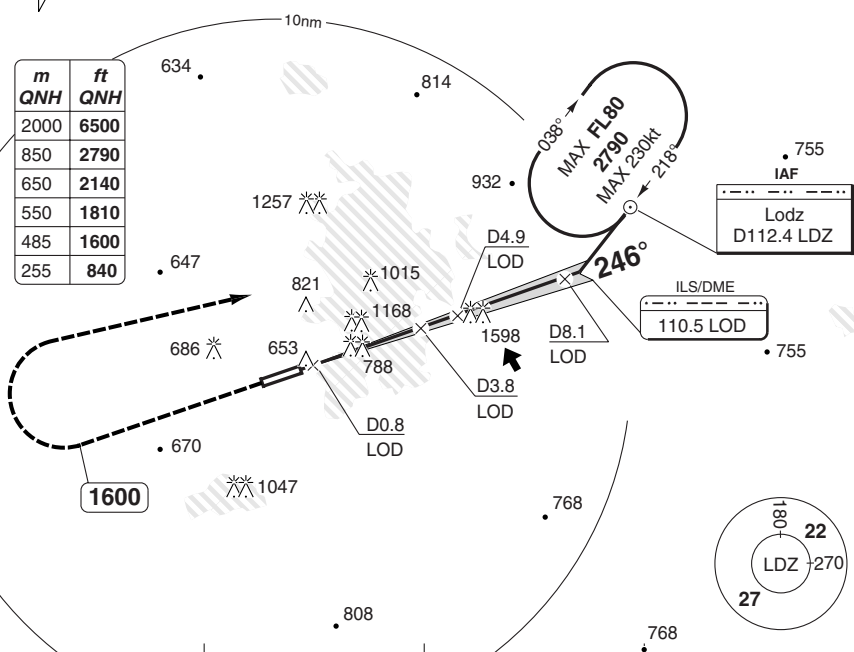
E019 10 | E019 20 | E019 30 | E019 40 | E019 50

5E

VOR/DME and DME required for LOC

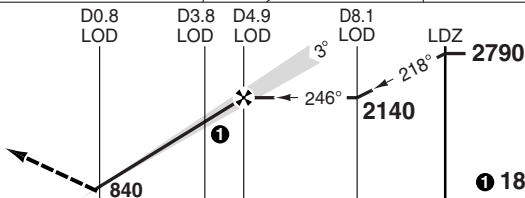
PANS OPS

m	ft
QNH	QNH
2000	6500
850	2790
650	2140
550	1810
485	1600
255	840



MAPt D0.8 LOD

Climb on **246°** to **1600**  
turn right to **LDZ**  
(MAX 185kt during turn)  
climbing to **2790**.



TCH 49

ACFT	ILS+DME	LOC+DME	Circling
A	810 (200) 750m	1040 (427) 1500m	1480 (870) 1.6km <b>a</b>
B			1580 (968) 2.4km <b>b</b>
C			2010 (1395) 3.6km <b>b</b>
D	820 (207) 750m	1040 (427) 1600m	

**a** CAT A: **1120** (509) 1.5km

**b** North of AD

DME LOD	3.0° ALT	LDA 2500x45 8202x147ft
4.9	2140	IALS
4	1850	
3	1530	
2	1210	
1.4	1040	

GS	100	120	140	160
ROD 3.0°	540	650	750	860
FAF-MAPt	2:28	2:03	1:45	1:32

420

© Navtech - epll01aip00

Change: New spec

**THIS CHART IS A PART OF NAVIGRAPH NDAC AND IS INTENDED FOR FLIGHT SIMULATION USE ONLY**

50 - 1

# VOR RWY 25

Lodz TWR  
124.225

VOR/DME 112.4 LDZ | FAT 238° | THR Elev 607 22hPa | AD Elev 607 22hPa | TL ATC | TA 6500

E019 10 | E019 20 | E019 30 | E019 40 | E019 50



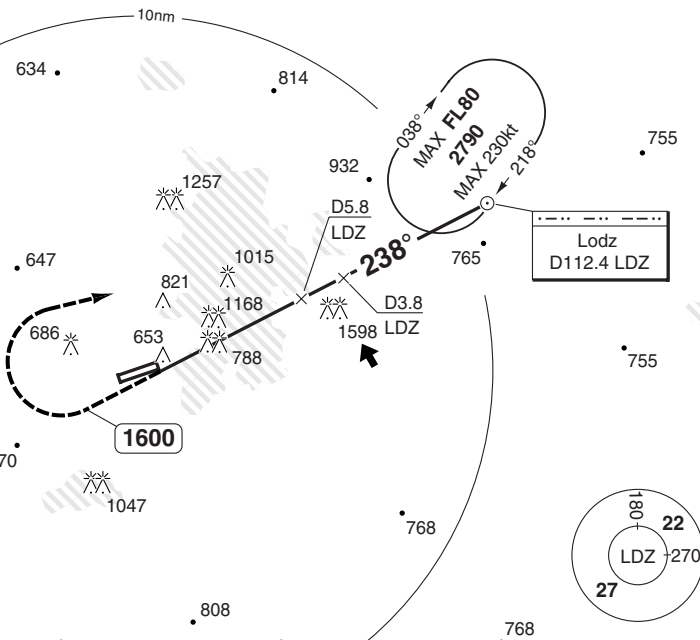
FAT offset 8° right from RCL

DME required

m	ft
2000	6500
850	2790
665	2200
650	2140
485	1600

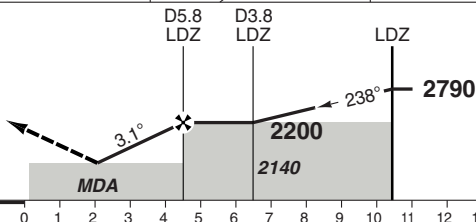
PANS OPS

50 - 2



MAPt D10.3 after LDZ

Climb on 238° to 1600  
turn right to LDZ  
(MAX 185kt during turn)  
climbing to 2790.



ACFT | VOR+DME | Circling

A	1430 (821)	1480 (870)
B	1500m	1.6km <b>a</b>
C	1430 (821)	1580 (968)
D	2400m	2.4km <b>b</b>
		2010 (1395)
		3.6km <b>b</b>

**a** CAT A: 1430 (821) 1.5km

**b** North of AD

DME LDZ	3.1° ALT	LDA 2500x45
5.8	2200	8202x147ft
6	2140	
7	1810	
8	1480	
8.2	1430	

GS	100	120	140	160
ROD 3.1°	550	660	770	880
FAF-MAPt	2:41	2:15	1:55	1:41

420

© Navitech - epll02iaip00

Change: New spec

**THIS CHART IS A PART OF NAVIGRAPH NDAC AND IS INTENDED FOR FLIGHT SIMULATION USE ONLY**

# JAR-OPS Landing Minima

The following Minima is for Public Transport aircraft and conforms to JAR-OPS1 regulations.

STRAIGHT-IN APPROACH		C				D			
R/W	Procedure	DA/ MDA QNH	DH/ MDH QFE	RVR	RVR	DA/ MDA QNH	DH/ MDH QFE	RVR	RVR
		ft	ft	m	m	ft	ft	m	m
25	ILS/DME	<b>810</b>	200	700	1000	<b>820</b>	210	700	1000
25	LLZ/DME	<b>1040</b>	430	1400	1800	<b>1040</b>	430	1600	2000
25	VOR/DME (1)	<b>1430</b>	820	1800	2000	<b>1430</b>	820	2000	2000

Notes:

(1) Procedure based on aerodrome elevation.

CIRCLING		C			D		
R/W	Procedure	MDA QNH	MDH QFE	Vis	MDA QNH	MDH QFE	Vis
		ft	ft	m	ft	ft	m
25	ILS/LLZ/DME	<b>1580</b>	970	2400	<b>2010</b>	1400	3600
25	VOR/DME	<b>1580</b>	970	2400	<b>2010</b>	1400	3600

Notes:

TAKE-OFF		C		D	
Runway	Facilities	RVR	Vis	RVR	Vis
07/25	REDL and/or RCL	400	-	400	-
07/25	Nil (Day only)	500	-	500	-

Notes:

# JAR-OPS Landing Minima

The following Minima is for Public Transport aircraft and conforms to JAR-OPS1 regulations.

STRAIGHT-IN APPROACH		A				B			
R/W	Procedure	DA/ MDA QNH	DH/ MDH QFE	RVR	RVR	DA/ MDA QNH	DH/ MDH QFE	RVR	RVR
		ft	ft	m	m	ft	ft	m	m
25	ILS/DME	<b>810</b>	200	700	1000	<b>810</b>	200	700	1000
25	LLZ/DME	<b>1040</b>	430	1200	1500	<b>1040</b>	430	1300	1500
25	VOR/DME (1)	<b>1430</b>	820	1500	1500	<b>1430</b>	820	1500	1500

Notes:

(1) Procedure based on aerodrome elevation.

CIRCLING		A			B		
R/W	Procedure	MDA QNH	MDH QFE	Vis	MDA QNH	MDH QFE	Vis
		ft	ft	m	ft	ft	m
25	ILS/LLZ/DME	<b>1120</b>	510	1500	<b>1480</b>	870	1600
25	VOR/DME	<b>1430</b>	820	1500	<b>1480</b>	870	1600

Notes:

TAKE-OFF		A		B	
Runway	Facilities	RVR	Vis	RVR	Vis
07/25	REDL and/or RCL	400	-	400	-
07/25	Nil (Day only)	500	-	500	-

Notes: