

## Airport information:

Country: Poland

City: BYDGOSZCZ

Coordinates: N 53° 05.8', E017 58.7

Elevation: 236

Customs: 0700-2000

Fuel: 100LL, Jet A1

RFF: CAT 6, CAT 7, CAT 7

hours: HO

## Runways:

Runway 08

Takeoff length: 2500, Landing length: 2500

Runway 26

Takeoff length: 2500, Landing length: 2500

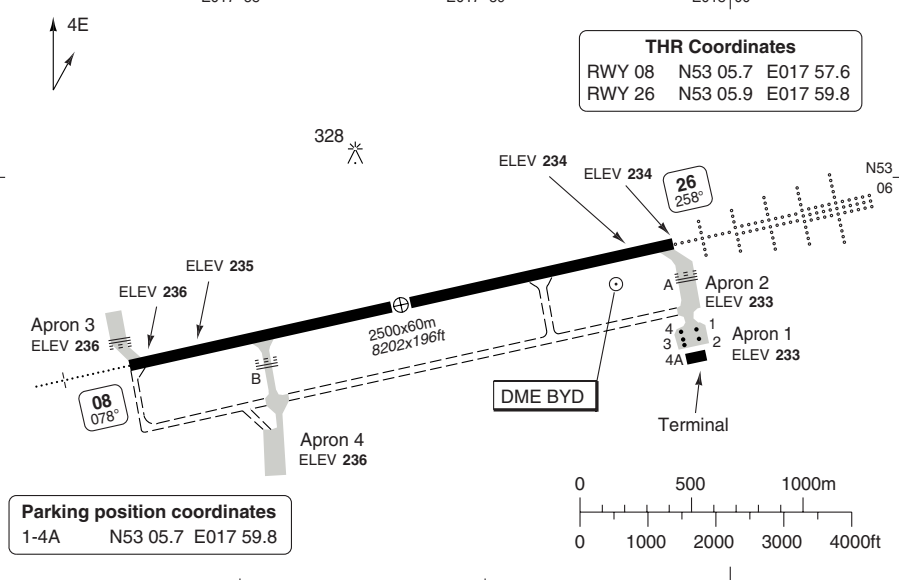
# AERODROME

Szwedzewo **BYDGOSZCZ**

10 - 1

Bydgoszcz TWR  
131.0

AD Elev 236 | ARP: N53 05.8 E017 58.7 | RFF: CAT 7 | AD HR: See NOTAM



RWY	Slope	TORA m/ft	LDA m/ft	ALS	REDL	Additional
08	0	2500 / 8202	2500 / 8202	H-E ①	H	P 3°
26	0	2500 / 8202	2500 / 8202	H-C	H	P 3°

① 420m.

EU OPS		TAKE OFF MINIMA	
RWY	Facilities	RVR A B C D	
08/26	RCL (day only) or RCL + REDL	400 m	
	NIL (day only)	500 m	

**GENERAL INFORMATION**

**TWY RESTRICTION**  
 TWY B width 18m/59ft.

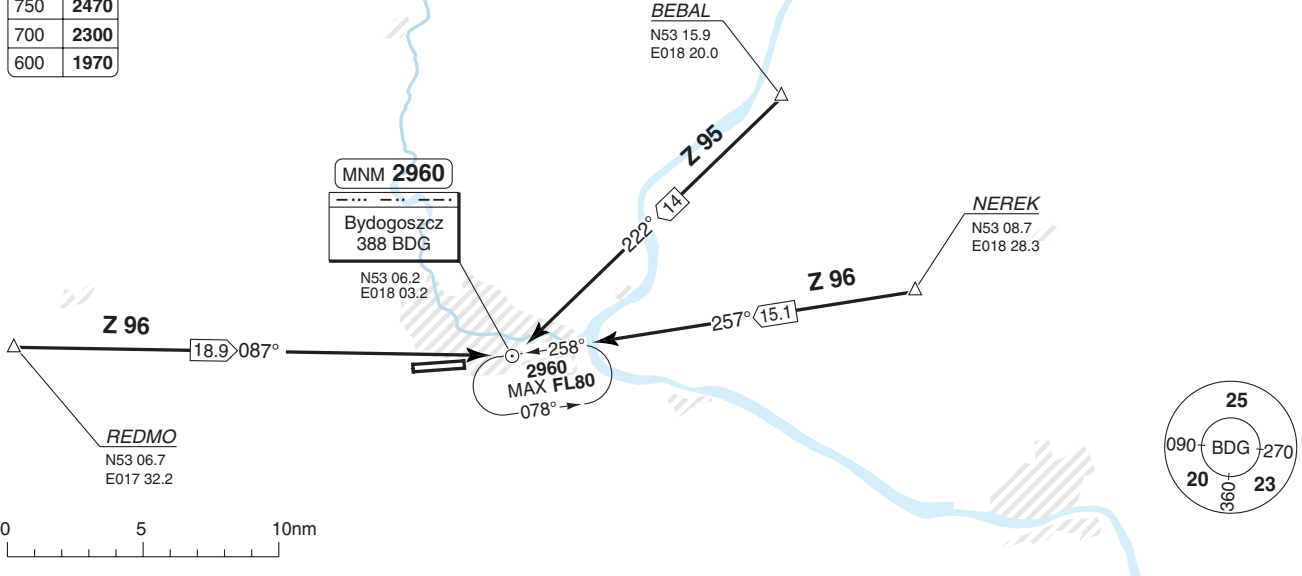
Bydgoszcz TWR  
131.0

TL ATC AD Elev 236

m	ft
QNH	QNH
900	2960
750	2470
700	2300
600	1970

Change: INFO frequency withdrawn, new NDB BDG.

THIS CHART IS A PART OF NAVIGRAPH NDAC AND IS INTENDED FOR FLIGHT SIMULATION USE ONLY.



ARRIVAL Routes

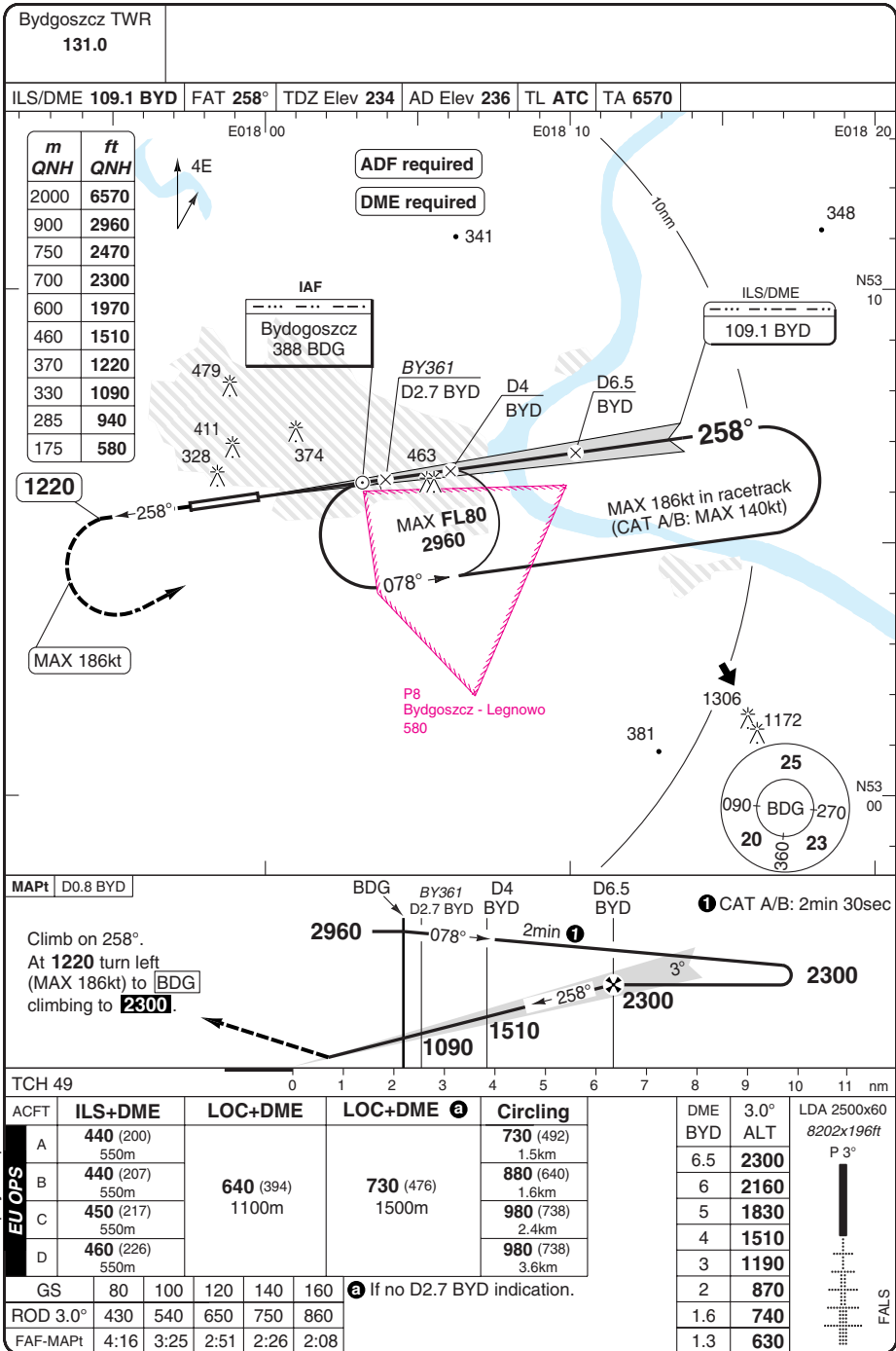
40 - 1 | 06 OCT 10

Szwedzowo **BYDGOSZCZ**

Poland - EPBY / BZG

# ILS Z RWY 26

# Szwedewowo BYDGOSZCZ



© Navtech - epby01iaip00

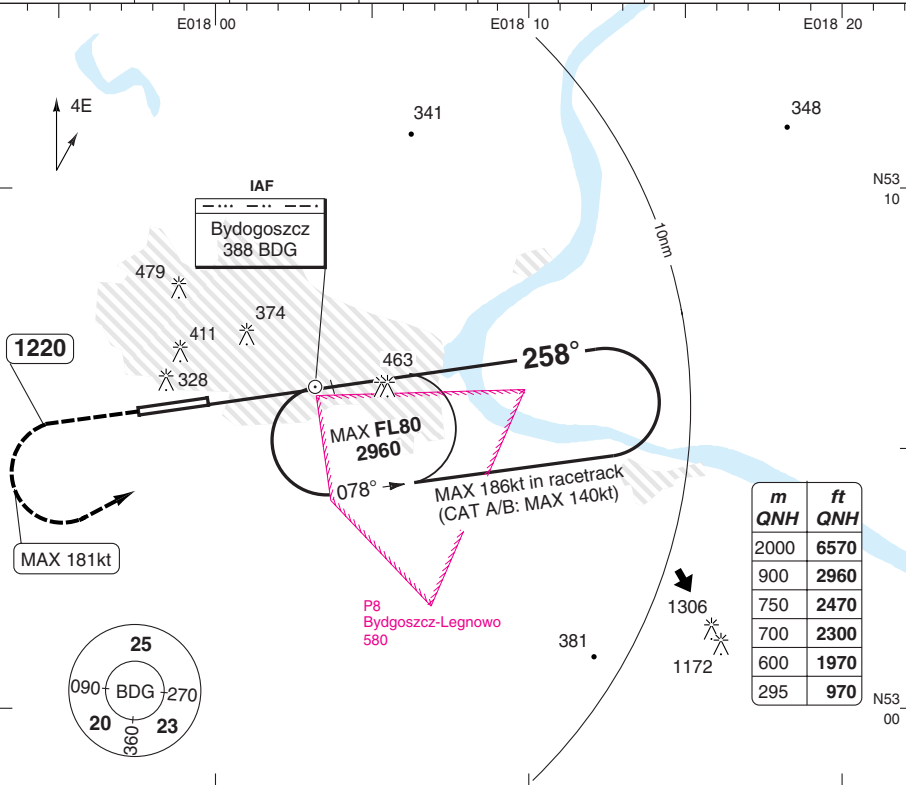
50-1

# NDB Y RWY 26

# Szwedewowo BYDGOSZCZ

Bydgoszcz TWR  
131.0

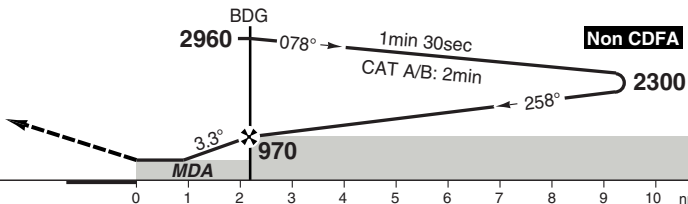
NDB 388 BDG | FAT 258° | TDZ Elev 234 | AD Elev 236 | TL ATC | TA 6570



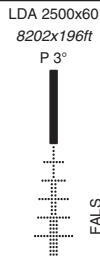
50 - 2

MAPt THR

Climb on 258°.  
At 1220 turn left  
(MAX 181kt) to **BDG**  
climbing to **2300**.



ACFT	NDB	Circling
A	<b>660</b> (410)	<b>730</b> (492) 1.5km
B	1400m	<b>880</b> (640) 1.6km
C	<b>660</b> (410)	<b>980</b> (738) 2.4km
D	1600m	<b>980</b> (738) 3.6km



© Navtech - epby02lap00 EU OPS

Change: New procedure.

**THIS CHART IS A PART OF NAVIGRAPH NDAC AND IS INTENDED FOR FLIGHT SIMULATION USE ONLY**

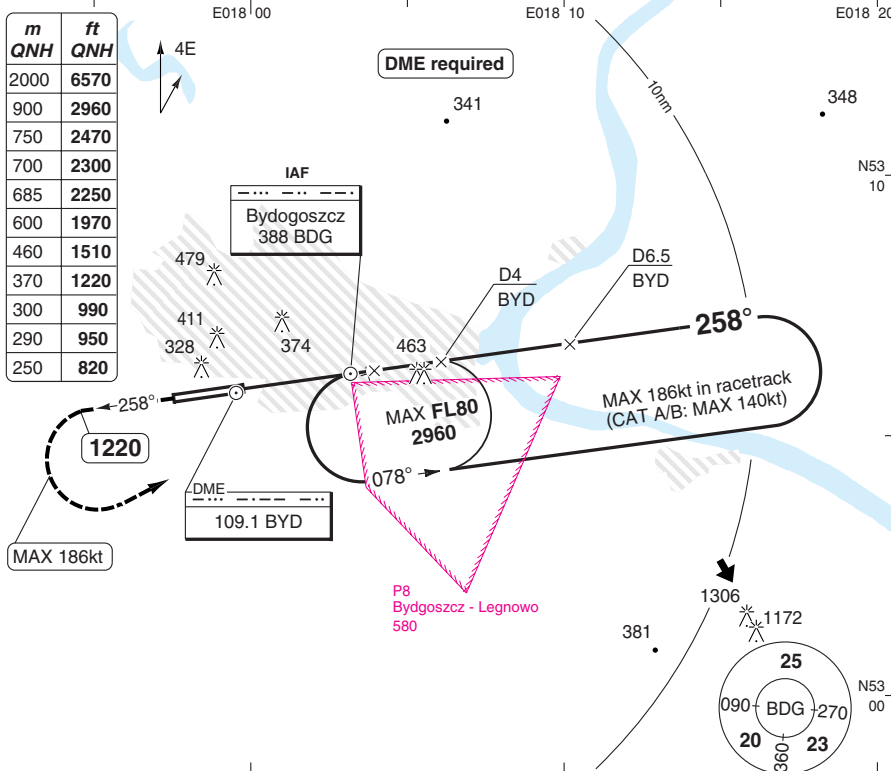
# NDB Z RWY 26

# Szwedewowo BYDGOSZCZ

Bydgoszcz TWR  
131.0

NDB 388 BDG    FAT 258°    TDZ Elev 234    AD Elev 236    TL ATC    TA 6570

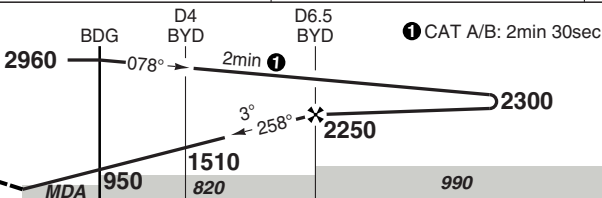
m	ft
2000	6570
900	2960
750	2470
700	2300
685	2250
600	1970
460	1510
370	1220
300	990
290	950
250	820



50 - 3

MAPt D0.8 BYD

Climb on 258°. At 1220 turn left (MAX 186kt) to BDG climbing to 2300.



TCH 49

ACFT	NDB+DME	NDB+DME ⓐ	Circling
A	660 (410) 1200m	820 (591) 1500m	830 (591) 1.5km
B			880 (640) 1.6km
C			980 (738) 2.4km
D			980 (738) 3.6km

ⓐ If no D4 BYD indication.

DME BYD	3.0° ALT	LDA 2500x60 8202x196ft
6.5	2250	P 3° FALS
6	2160	
5	1830	
4	1510	
3	1190	
2	870	
1.6	740	
1.3	630	

GS	80	100	120	140	160
ROD 3.0°	430	540	650	750	860
FAF-MAPt	4:16	3:25	2:51	2:26	2:08

Change: New procedure.

**THIS CHART IS A PART OF NAVIGRAPH NDAC AND IS INTENDED FOR FLIGHT SIMULATION USE ONLY**

## JAR-OPS Landing Minima

Szvederowo **BYDGOSZCZ**

The following Minima is for Public Transport aircraft and conforms to JAR-OPS1 regulations.

STRAIGHT-IN APPROACH		C				D			
R/W	Procedure	DA/ MDA QNH ft	DH/ MDH QFE ft	RVR m	RVR No ALS m	DA/ MDA QNH ft	DH/ MDH QFE ft	RVR m	RVR No ALS m
26	ILS/DME Z	<b>470</b>	220	600	1000	<b>480</b>	230	600	1000
26	LOC/DME Z	<b>640</b>	400	1000	1800	<b>640</b>	400	1400	2000
26	LOC/DME Z (no SDF)	<b>730</b>	480	1200	2000	<b>730</b>	480	1600	2000
26	NDB Y	<b>660</b>	410	1000	1800	<b>660</b>	410	1400	2000
26	NDB/DME Z	<b>660</b>	410	1000	1800	<b>660</b>	410	1400	2000
26	NDB/DME Z (no SDF)	<b>840</b>	600	1200	2000	<b>840</b>	600	1600	2000

Notes:

CIRCLING		C			D		
R/W	Procedure	MDA QNH ft	MDH QFE ft	Vis m	MDA QNH ft	MDH QFE ft	Vis m
26	NDB/DME Z	<b>980</b>	740	2400	<b>980</b>	740	3600
26	Other Procs	<b>980</b>	740	2400	<b>980</b>	740	3600

Notes:

TAKE-OFF		C		D	
Runway	Facilities	RVR	Vis	RVR	Vis
08/26	REDL and/or RCL	400	-	400	-
08/26	Nil (Day only)	500	-	500	-

Notes:

## JAR-OPS Landing Minima

Szvederowo **BYDGOSZCZ**

The following Minima is for Public Transport aircraft and conforms to JAR-OPS1 regulations.

STRAIGHT-IN APPROACH		A				B			
R/W	Procedure	DA/ MDA QNH ft	DH/ MDH QFE ft	RVR m	RVR No ALS m	DA/ MDA QNH ft	DH/ MDH QFE ft	RVR m	RVR No ALS m
26	ILS/DME Z	<b>450</b>	200	550	1000	<b>460</b>	210	600	1000
26	LOC/DME Z	<b>640</b>	400	900	1500	<b>640</b>	400	1000	1500
26	LOC/DME Z (no SDF)	<b>730</b>	480	1000	1500	<b>730</b>	480	1200	1500
26	NDB Y	<b>660</b>	410	900	1500	<b>660</b>	410	1000	1500
26	NDB/DME Z	<b>660</b>	410	900	1500	<b>660</b>	410	1000	1500
26	NDB/DME Z (no SDF)	<b>840</b>	600	1000	1500	<b>840</b>	600	1200	1500

Notes:

CIRCLING		A			B		
R/W	Procedure	MDA QNH ft	MDH QFE ft	Vis m	MDA QNH ft	MDH QFE ft	Vis m
26	NDB/DME Z	<b>830</b>	600	1500	<b>880</b>	640	1600
26	Other Procs	<b>730</b>	500	1500	<b>880</b>	640	1600

Notes:

TAKE-OFF		A		B	
Runway	Facilities	RVR	Vis	RVR	Vis
08/26	REDL and/or RCL	400	-	400	-
08/26	Nil (Day only)	500	-	500	-

Notes: