

Airport information:

Country: Norway

City: KIRKENES

Coordinates: N 69° 43.5', E029 53.3

Elevation: 282

Customs: Customs: O/R 1 HR

Fuel: 100LL, Jet A1

RFF: CAT 7: MON-FRI 0600-2000, SAT 0800-1500, SUN 0800-2000, outside these hours CAT
hours: TWR: MON-FRI 0430-2300, SAT 0630-1500, SUN 0900-2300

Runways:

Runway 06

Takeoff length: 1755, Landing length: 1695

Runway 24

Takeoff length: 2055, Landing length: 1605

Aerodrome Briefing Card

KIRKENES

1. GENERAL INFORMATION

- 1.1 The AD is joint civil/military.
- 1.2 The entire area is restricted, requiring PPR when outside controlled airspace.

2. GEOGRAPHICAL DATA

- 2.1 The AD is located 3nm W of the city. The surrounding terrain is hilly and rather high.
- 2.2 The Russian Border is approx 5nm SSE.

3. WEATHER

- 3.1 The climate is of a maritime/continental type with rather cool summers and relatively cold winters. The mean MAX/MNM temperature in JUL +16.1°/+9.2°C and in JAN -6.4°/-14.5°C.
- 3.2 In certain weather conditions ocean fog may drift in from sea. A bad weather situation can last for many days.
- 3.3 Turbulence and wind shear/down draughts may occur on short final. Wind gauges installed and in wind shear condition the observation will be included in METAR.

4. FLIGHT PREPARATION

- 4.1 Planning
ENKR has a relatively short runway, with a LDA of 1605m for RWY 24, and 1695m for RWY 06.
Make thorough weight calculations.

5. FLIGHT PROCEDURES

- 5.1 ILS 24
The main approach is ILS 24, which can be flown via overhead KIK/KKS, direct from SDA or via the D12 Arc. PAPI is available.
- 5.2 VOR 06
This approach can be intercepted directly from SIVNU, SDA or VANOS, or directly via P-RNAV route from TINOS or VADLA, or from overhead KIK.
The approach is offset 13°, taking you between two obstruction-lighted hilltops. The final approach path is close to the ground. Correct all minimum altitudes for low temperatures and/or wind. The terrain northwest of the approach path forces a late establishment on final.
EFAS and PAPI are available.

- 5.3 CLPs are established for both runways. Rising terrain at both runway ends means that all relevant factors affecting aircraft performance must be considered when calculating MTOW. The underruns may be very slippery in winter conditions.

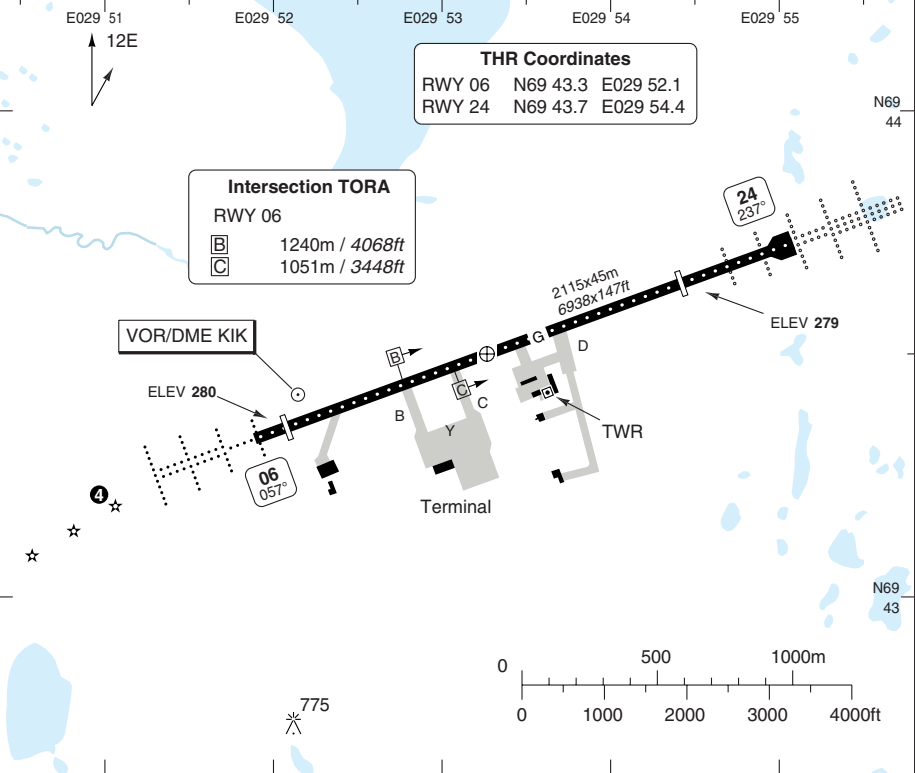
AERODROME

Hooybuktmoen KIRKENES

10 - 1

Kirkenes TWR 120.35 118.1 122.1	ATIS 118.025
-----------------------------------------------------	------------------------

AD Elev 282	ARP: N69 43.5 E029 53.3	RFF: 1	AD HR: 2
--------------------	-------------------------	---------------	-----------------



RWY	Slope	TORA m/ft	LDA m/ft	ALS	REDL	RCLL	Additional
06	0	1755 / 5757	1695 / 5561	H-C 3 4	H	60m	P 3.4°L/R (42) 5 6
24	0	2055 / 6742	1605 / 5265	H-C	H	60m	P 3.4°L/R (50) 6

3 600m. **4** EFAS. Sequenced FLG LGT of 14 units offset 10° S of extended CL.

5 Approved area centered on a line 10° S of extended CL. **6** Balked LDG LGT 350M after THR.

1 CAT 7 MON-FRI 06-20, SAT 08-15, SUN 08-20 Other hr CAT 4.

2 MON-FRI 0430-2300, SAT 0630-1500, SUN 0900-2300.

EU OPS TAKE OFF MINIMA

RWY	Facilities	RVR			
		A	B	C	D
06/24	RCL (day only) or RCL + REDL	400m			
	NIL (day only)	500m			

© Navitech - enkr01laorg0

Change: New spec.

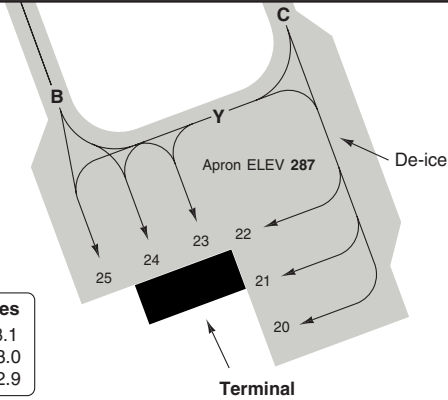
THIS CHART IS A PART OF NAVIGRAPH NDAC AND IS INTENDED FOR FLIGHT SIMULATION USE ONLY

AERODROME

Hoybuktmoen **KIRKENES**

10 - 2

Kirkenes TWR	ATIS
120.35 118.1	118.025
122.1	



Parking position coordinates		
20-22	N69 43.3	E029 53.1
23, 24	N69 43.3	E029 53.0
25	N69 43.3	E029 52.9

GENERAL INFORMATION

1. AD RESTRICTION

- 1.1 PPR for ACFT higher than code letter C.
- 1.2 Special requirements for operators performing commercial transportation into Kirkenes AD.
 - 1.2.1 The operator shall stipulate special crew qualification requirements (CAT B or C, cfr JAR OPS 1.975).
 - 1.2.2 Departure procedures, TKOF minima, TKOF weight limitations shall be documented.
 - 1.2.3 There will be a requirement to document fulfillment of the special requirements on request from the AD operator or the Norwegian CAA.
- 1.3 CAT II or CAT III operations not approved.

2. WARNING

Turbulence and wind shear may occur on short final RWY 06 and climb-out RWY 24 at wind directions SE and NW and above 20KT.

Kirkenes TWR	ATIS
120.35 118.1	118.025
122.1	

R402
Finnmark
GND-UNL

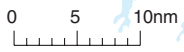
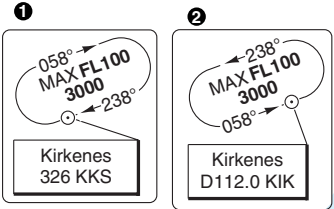
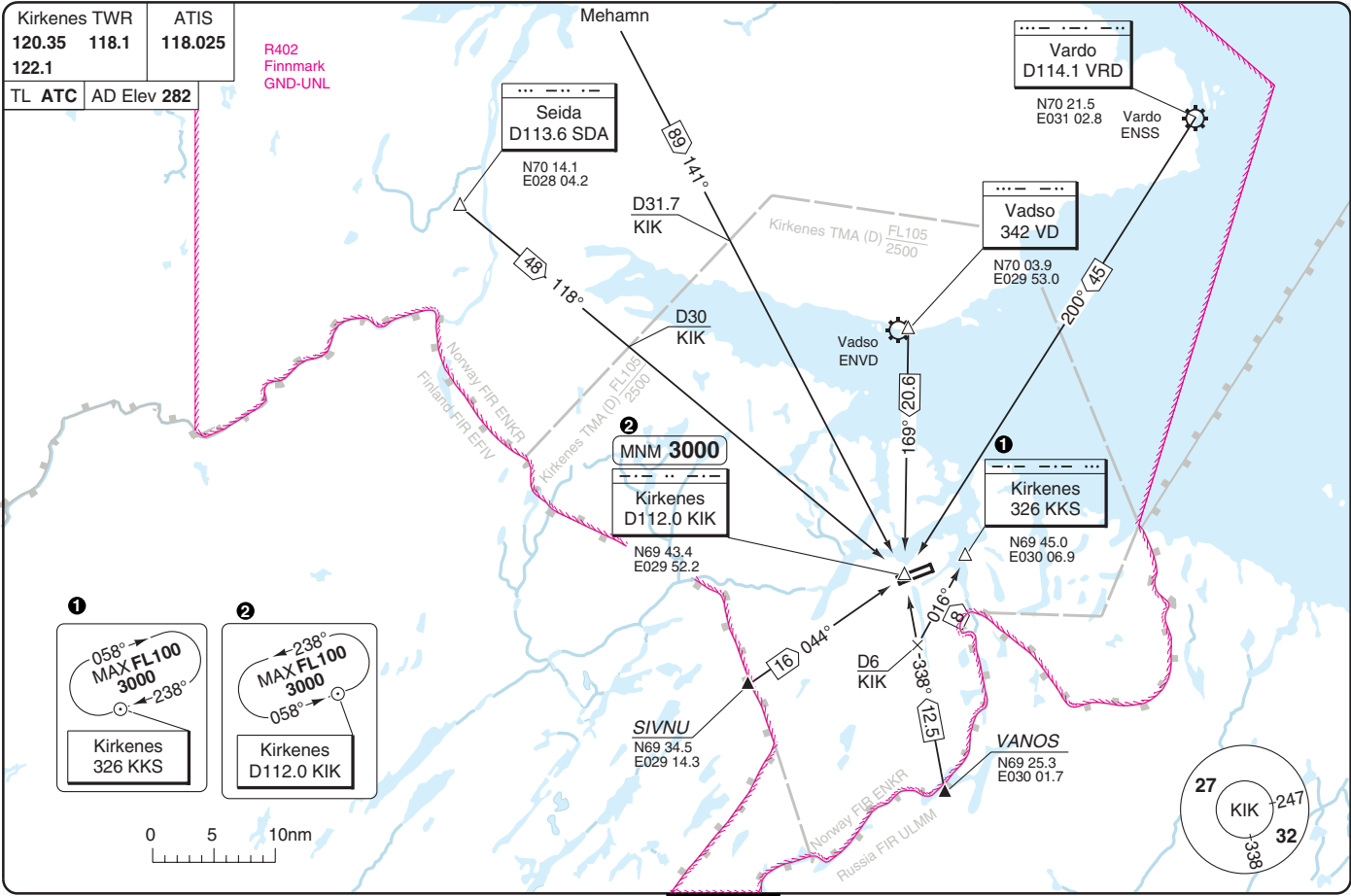
TL ATC AD Elev 282

ARRIVAL Routes

40 - 1 | 20 OCT 10

Høybuktaoen KIRKENES

Norway - ENKR / KKN



THIS CHART IS A PART OF NAVIGRAPH NDAC AND IS INTENDED FOR FLIGHT SIMULATION USE ONLY

Change: New spec.

Kirkenes TWR		ATIS
120.35	118.1	118.025
122.1		
TL ATC	AD Elev 282	

R402
Finmark
GND-UNL

Seida
D113.6 SDA
N70 14.1
E028 04.2

Mehamn

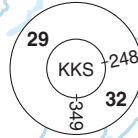
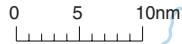
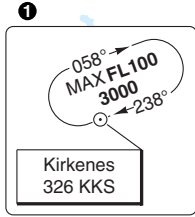
Vardo
D114.1 VRD
N70 21.5
E031 02.8
Vardo
ENSS

Vadso
342 VD
N70 03.9
E029 53.0
Vadso
ENVD

MNM 3000

Kirkenes
326 KKS
N69 45.0
E030 06.9

SIVNU
N69 34.5
E029 14.3

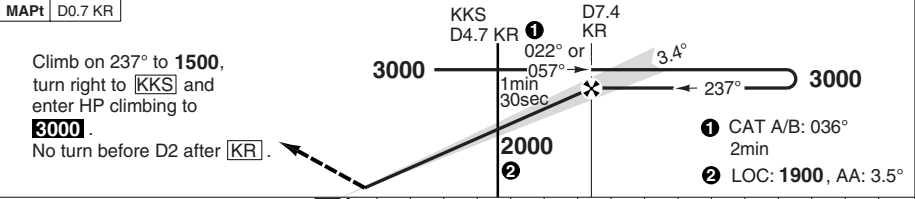
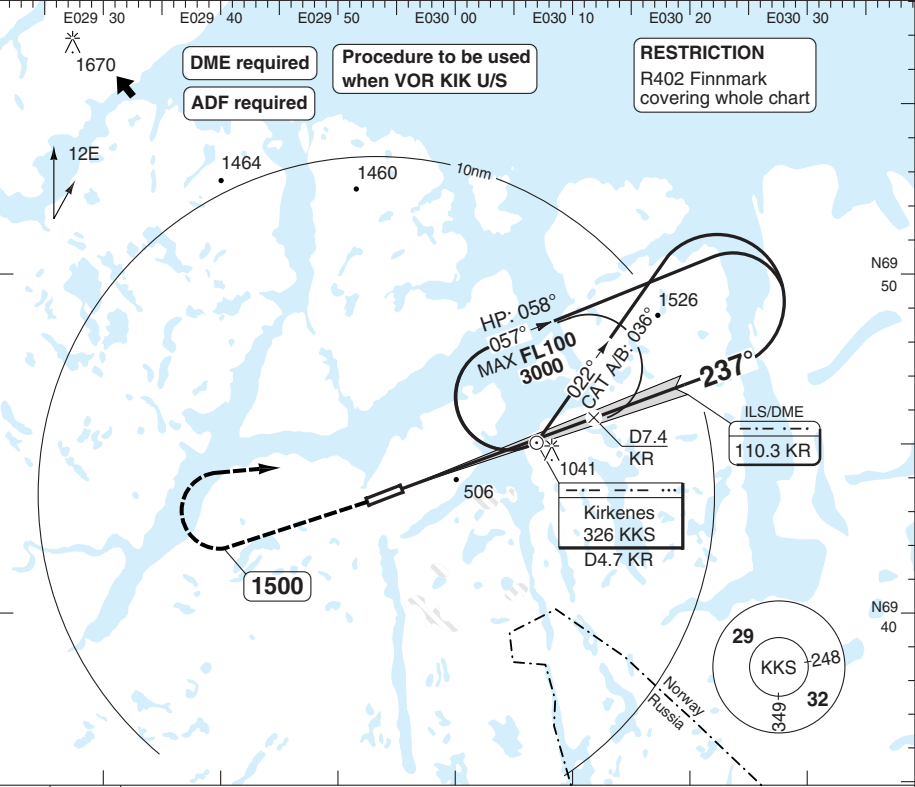


ILS Y RWY 24

Hoysbuktnoen **KIRKENES**

Kirkenes TWR 120.35 118.1 122.1	ATIS 118.025
-----------------------------------------------------	------------------------

ILS/DME 110.3 KR	FAT 237°	DTHR Elev 279	AD Elev 282	TL ATC	TA 7000
-------------------------	-----------------	----------------------	--------------------	---------------	----------------



TCH 55	0	1	2	3	4	5	6	7	8	9	10	11	12	13	14	15	16	nm
--------	---	---	---	---	---	---	---	---	---	---	----	----	----	----	----	----	----	----

ACFT	ILS+DME	LOC+DME	Circling			DME	3.5° ALT	LDA 1605x45 5265x147ft P 3.4°L/R (50)
A	550 (266) 600m	770 (490) 1500m	1170 (880) 1.5km	7.4	3000			
B	560 (279) 600m		1170 (880) 1.6km	7	2850			
C	570 (289) 650m		1360 (1080) 2.4km	6	2480			
D	590 (301) 700m		1440 (1160) 3.6km	5	2110			
GS	80	100	120	140	160		4	1740
ROD 3.5°	500	620	750	870	990	3	1370	
						2	1000	
						1.4	770	

© Navtech - enkr01iaip00

50 - 1

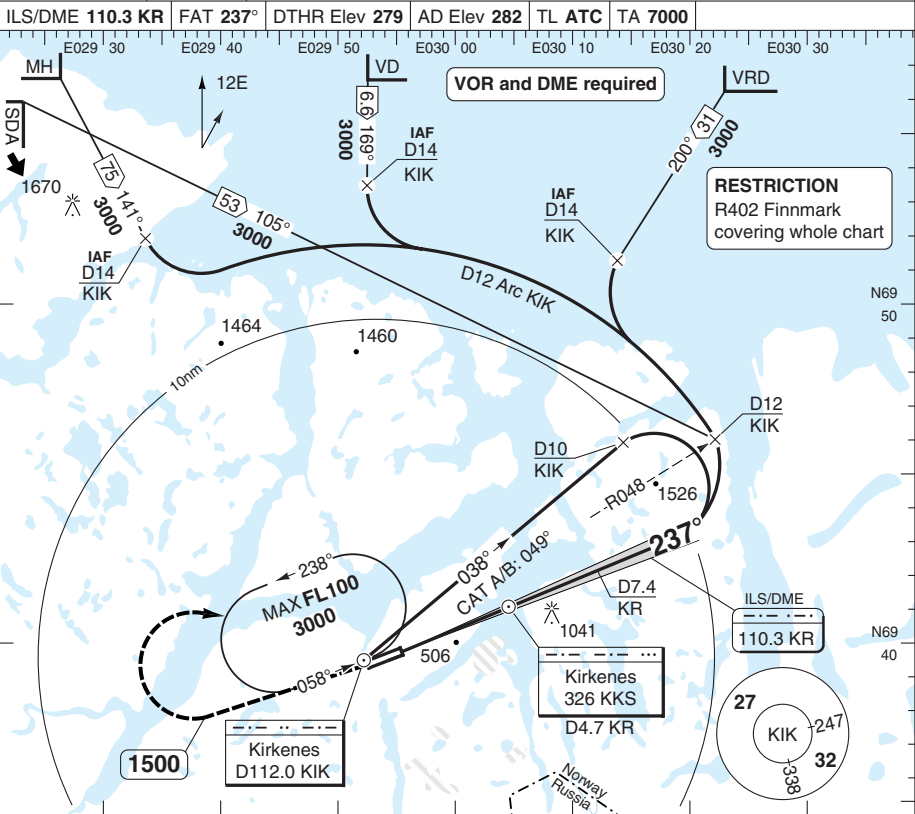
Change: New spec.

THIS CHART IS A PART OF NAVIGRAPH NDAC AND IS INTENDED FOR FLIGHT SIMULATION USE ONLY

ILS Z RWY 24

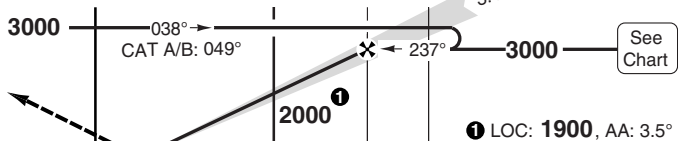
Høybuktnøen KIRKENES

Kirkenes TWR 120.35 118.1 122.1	ATIS 118.025				
ILS/DME 110.3 KR	FAT 237°	DTHR Elev 279	AD Elev 282	TL ATC	TA 7000



MAPt D0.7 KR	KIK	KKS D4.7 KR	D7.4 KR	D10 KIK
--------------	-----	-------------	---------	---------

Climb on 237° to 1500, turn right to **KIK** and enter HP climbing to **3000**. No turn before D2 after **KR**.



1 LOC: 1900, AA: 3.5°

TCH 55	0	1	2	3	4	5	6	7	8	9	10	11	12	13	14	15	16nm
--------	---	---	---	---	---	---	---	---	---	---	----	----	----	----	----	----	------

ACFT	ILS+DME	LOC+DME	Circling					DME	3.5° ALT	LDA 1605x45 5265x147ft P 3.4°L/R (50)
A	550 (267) 600m	770 (490) 1500m	1170 (880) 1.5km					7.4	3000	
B	560 (280) 600m		1170 (880) 1.6km					7	2850	
C	570 (290) 650m		1360 (1080) 2.4km					6	2480	
D	590 (302) 700m		1440 (1160) 3.6km					5	2110	
GS	80	100	120	140	160	4	1740			
ROD 3.5°	500	620	750	870	990	3	1370			
FAF-MAPt	5:02	4:02	3:22	2:53	2:31	2	1000			
						1.4	770			

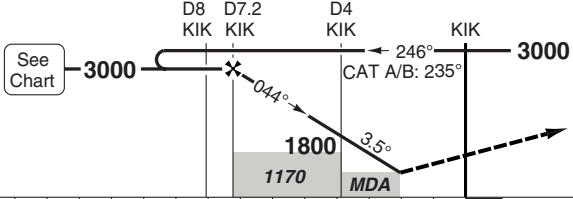
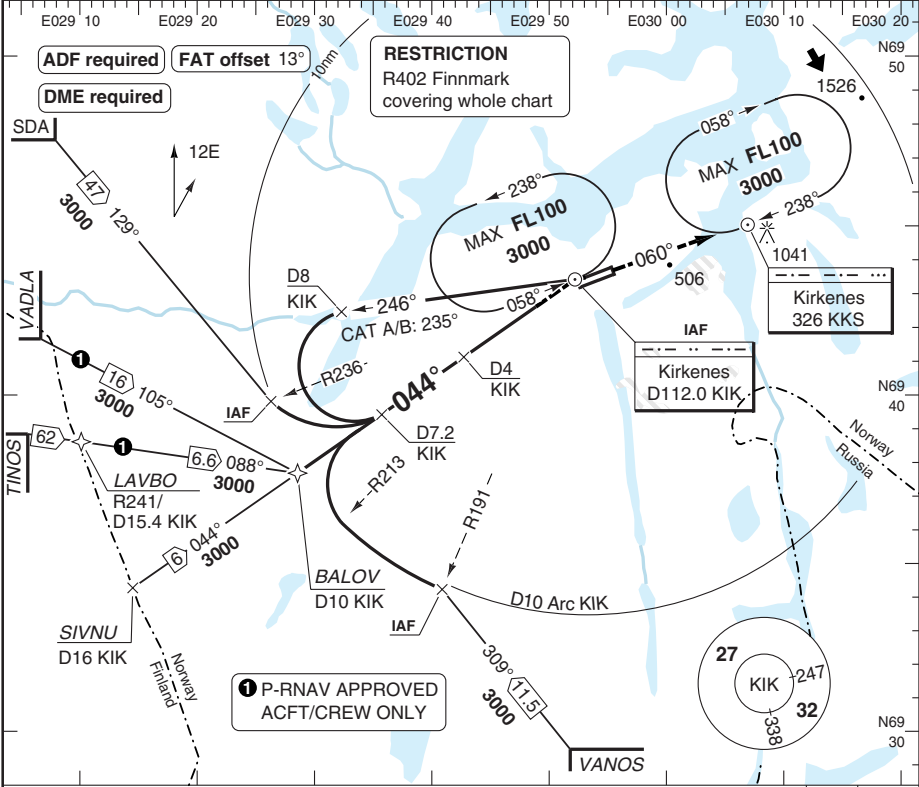
Change: New spec.

VOR RWY 06

Hoysbuktnoen KIRKENES

Kirkenes TWR 120.35 118.1 122.1	ATIS 118.025
---------------------------------------	-----------------

VOR/DME 112.0 KIK	FAT 044°	DTHR Elev 280	AD Elev 282	TL ATC	TA 7000
-------------------	----------	---------------	-------------	--------	---------



Climb on R224 [KIK] to [KIK], turn right on 060° to [KKS] HP climbing to 3000.

ACFT	VOR+DME	Circling
A	1060 (780) 1500m	1170 (880) 1.5km
B		1170 (880) 1.6km
C	1060 (780) 3200m	1360 (1080) 3.2km
D		1440 (1160) 3.6km

nm	14	13	12	11	10	9	8	7	6	5	4	3	2	1	0
GS		80	100	120	140	160									
ROD 3.5°		510	630	760	880	1010									
FAF-MAPt		3:54	3:07	2:36	2:13	1:57									

DME	3.5°	LDA 1695x45
KIK	ALT	5561x147ft
7.2	3000	P 3.4°L/R (42)
6	2560	
5	2180	
4	1800	
3	1430	
2.0	1060	

© Navtech - enkr03iaip00

50 - 3

IALS

Change: New spec.

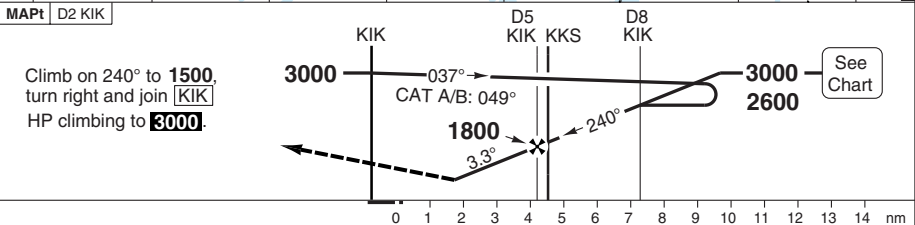
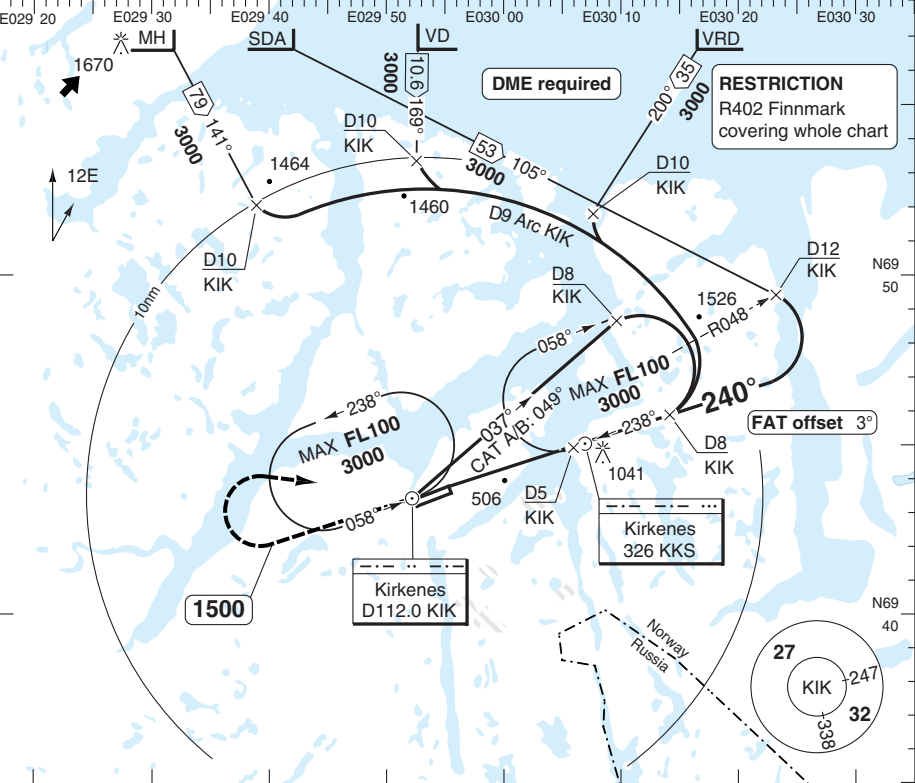
THIS CHART IS A PART OF NAVIGRAPH NDAC AND IS INTENDED FOR FLIGHT SIMULATION USE ONLY

VOR RWY 24

Høybuktnøen KIRKENES

Kirkenes TWR 120.35 122.1	ATIS 118.1 118.025
---------------------------------	--------------------------

VOR/DME 112.0 KIK	FAT 240°	DTHR Elev 279	AD Elev 282	TL ATC	TA 7000
-------------------	----------	---------------	-------------	--------	---------



ACFT	VOR+DME	Circling	DME	3.3° ALT	LDA 1605x45 5265x147ft P 3.4°L/R (50)	
A	750 (470) 1500m	1170 (880) 1.5km	8.4	3000		
B		1170 (880) 1.6km	8	2850		
C		1360 (1080) 2.4km	7.3	2600		
D		1440 (1160) 3.6km	6	2150		
GS	80	100	120	140		160
ROD 3.3°	470	590	710	820		940

© Navtech - enkr04iaip00

Change: New spec.

THIS CHART IS A PART OF NAVIGRAPH NDAC AND IS INTENDED FOR FLIGHT SIMULATION USE ONLY

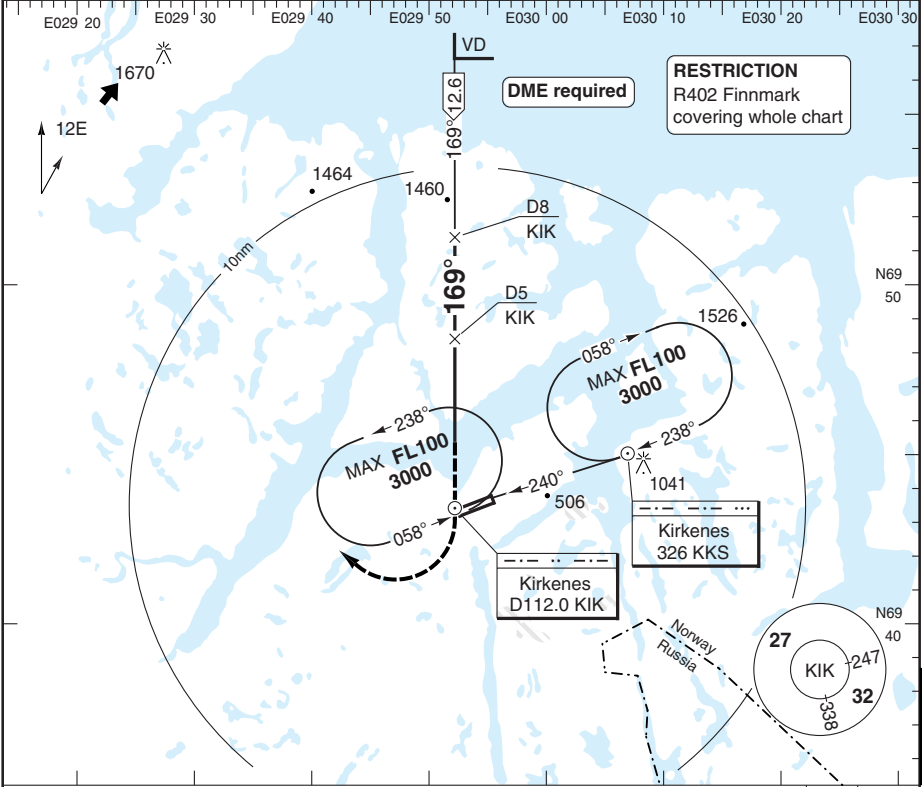
VOR A CIRCLING

Høybuktmoen KIRKENES

Kirkenes TWR
120.35 118.1
122.1

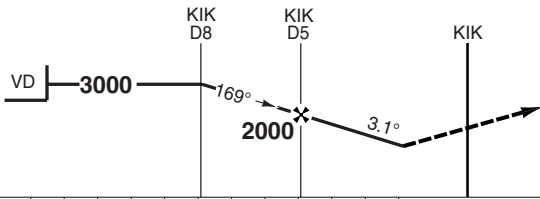
ATIS
118.025

VOR/DME **112.0 KIK** | FAT **169°** | AD Elev **282** | TL **ATC** | TA **7000**



PANS OPS

50 - 5



Climb on 169° to **KIK**, turn right and join **KIK** HP climbing to **3000**.

nm 12 11 10 9 8 7 6 5 4 3 2 1 0

ACFT	VOR+DME Circling
A	1170 (880) 1.5km
B	1170 (880) 1.6km
C	1360 (1080) 2.4km
D	1440 (1160) 3.6km

© Navtech - enkr05iaip00
EU OPS

Reverse side blank

Change: New spec.

THIS CHART IS A PART OF NAVIGRAPH NDAC AND IS INTENDED FOR FLIGHT SIMULATION USE ONLY

JAR-OPS Landing Minima

Hoybuktnoen **KIRKENES**

The following Minima is for Public Transport aircraft and conforms to JAR-OPS1 regulations.

STRAIGHT-IN APPROACH		C				D			
R/W	Procedure	DA/ MDA QNH ft	DH/ MDH QFE ft	RVR m	RVR No ALS m	DA/ MDA QNH ft	DH/ MDH QFE ft	RVR m	RVR No ALS m
06	VOR/DME	1060	780	1800	2000	1060	780	2000	2000
24	ILS/DME Y, Z	570	290	650	1200	590	310	800	1200
24	LOC/DME Y, Z	770	490	1200	2000	770	490	1600	2000
24	VOR/DME	750	470	1200	2000	750	470	1600	2000

Notes:

CIRCLING		C			D		
R/W	Procedure	MDA QNH ft	MDH QFE ft	Vis m	MDA QNH ft	MDH QFE ft	Vis m
-	VOR A	1370	1080	2400	1450	1160	3600
-	All other procs	1370	1080	2400	1450	1160	3600

Notes:

TAKE-OFF		C		D	
Runway	Facilities	RVR	Vis	RVR	Vis
06/24	REDL and/or RCL	400	-	400	-
06/24	Nil (Day only)	500	-	500	-

Notes:

JAR-OPS Landing Minima

Hoybuktnoen **KIRKENES**

The following Minima is for Public Transport aircraft and conforms to JAR-OPS1 regulations.

STRAIGHT-IN APPROACH		A				B			
R/W	Procedure	DA/ MDA QNH ft	DH/ MDH QFE ft	RVR m	RVR No ALS m	DA/ MDA QNH ft	DH/ MDH QFE ft	RVR m	RVR No ALS m
06	VOR/DME	1060	780	1500	1500	1060	780	1500	1500
24	ILS/DME Y, Z	550	270	650	1200	560	280	650	1200
24	LOC/DME Y, Z	770	490	1000	1500	770	490	1200	1500
24	VOR/DME	750	470	1000	1500	750	470	1200	1500

Notes:

CIRCLING		A			B		
R/W	Procedure	MDA QNH ft	MDH QFE ft	Vis m	MDA QNH ft	MDH QFE ft	Vis m
-	VOR A	1170	880	1500	1170	880	1600
-	All other procs	1170	880	1500	1170	880	1600

Notes:

TAKE-OFF		A		B	
Runway	Facilities	RVR	Vis	RVR	Vis
06/24	REDL and/or RCL	400	-	400	-
06/24	Nil (Day only)	500	-	500	-

Notes: