

## Airport information:

Country: Norway

City: ANDENES

Coordinates: N 69° 17.6', E016 08.7

Elevation: 43

Customs:

Fuel: JP8

RFF: CAT 6

hours: ATS: MON-FRI 0405-2130, SAT 0745-1545, SUN 1000-2200

## Runways:

Runway 03

Takeoff length: 1672, Landing length: 1672

Runway 14

Takeoff length: 2468, Landing length: 2468

Runway 21

Takeoff length: 1672, Landing length: 1672

Runway 32

Takeoff length: 2468, Landing length: 2468

# Aerodrome Briefing Card

5 - 1

## 1. GEOGRAPHICAL DATA

- 1.1 The AD is situated on the island of Andöya, facing open sea to the N and E, whereas there is high terrain to the SW within 10NM.
- 1.2 The AD is military. Be aware of the restricted areas.

## 2. WEATHER

- 2.1 The AD is affected by strong (from NW often very strong) winds (60-100KT) and low ceiling during autumn, winter and spring. These winds are mostly stable and steady, but the predominant wind direction is W and gives turbulence at low altitude and also downdraughts. Fog is rare.

## 3. TRAFFIC

Open

## 4. MISCELLANEOUS

Open

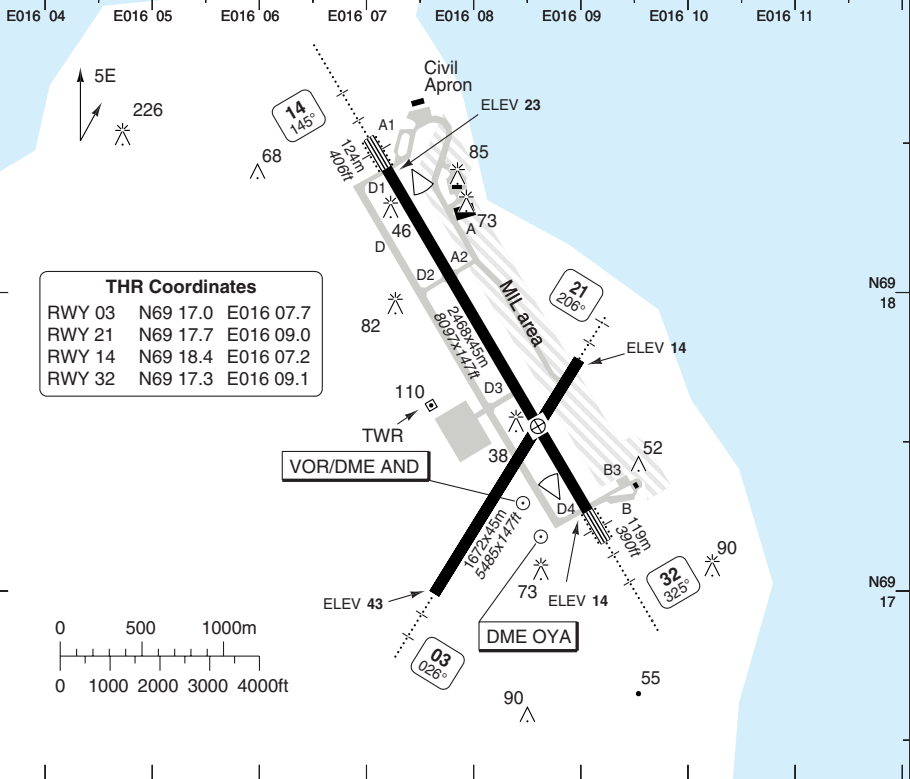
## 5. REPORTS

Open

# AERODROME

Andoya TWR 118.2 122.1	ATIS 118.7 136.125
------------------------------	--------------------------

AD Elev 43	ARP: N69 17.6 E016 08.7	RFF: CAT 6	AD HR: ①
------------	-------------------------	------------	----------



THR Coordinates		
RWY 03	N69 17.0	E016 07.7
RWY 21	N69 17.7	E016 09.0
RWY 14	N69 18.4	E016 07.2
RWY 32	N69 17.3	E016 09.1

RWY	Slope	TORA m/ft	LDA m/ft	ALS	REDL	Additional
03	-0.5	1672 / 5485	1672 / 5485	H-E ②	H	-
21	+0.5	1672 / 5485	1672 / 5485	H-E ③	H	P 3°L/R (51)
14	-0.1	2468 / 8097	2468 / 8097	H-E+F	H	P 3°L/R (45)
32	+0.1	2468 / 8097	2468 / 8097	H-E+F	H	P 3°L/R (47)

① MON-FRI 0405-2130, SAT 0745-1545, SUN 1000-2200 ② 420m. ③ 300m.

**STATE TAKE OFF MINIMA**

RWY	Facilities	RVR/VIS			
		A	B	C	D
All	RCL or RCL + REDL (night)	800m	0.4km		
	RCL or RCL + REDL (day)	800m	0.6km		

**AERODROME**

10 - 2

**GENERAL INFORMATION****1. AD RESTRICTIONS**

- 1.1 PPR for ACFT with higher code letter than C.
- 1.2 Special requirements for operators performing commercial transportation into Andenes AD. The operator shall stipulate special crew qualification requirements (CAT B or C, cfr EU-OPS 1.975).
- 1.3 There will be a requirement to document fulfillment of the special requirements on request from the AD operator or the Norwegian CAA.

**2. TWY RESTRICTIONS**

TWY A and E width 15m/ *49ft*.  
TWY B partly width 12m/ *39ft*.

**3. NOTE**

No stop bar LGT at HLDG PSN.

**4. WARNING**

- 4.1 Wind shear may occur on short final RWY 21 and 32 with wind in sector 200°-270° above 25kt.
- 4.2 Heavy downdraft may occur on APCH to RWY 21 when passing shoreline.

THIS CHART IS A PART OF NAVIGRAPH NDAC AND IS INTENDED FOR FLIGHT SIMULATION USE ONLY

Change: ATIS

© Navtech - enan01aaorg0

Andoya TWR	ATIS
118.2 118.7	136.125
122.1	
TL ATC	AD Elev 43

D451  
Andfjorden  
UNL

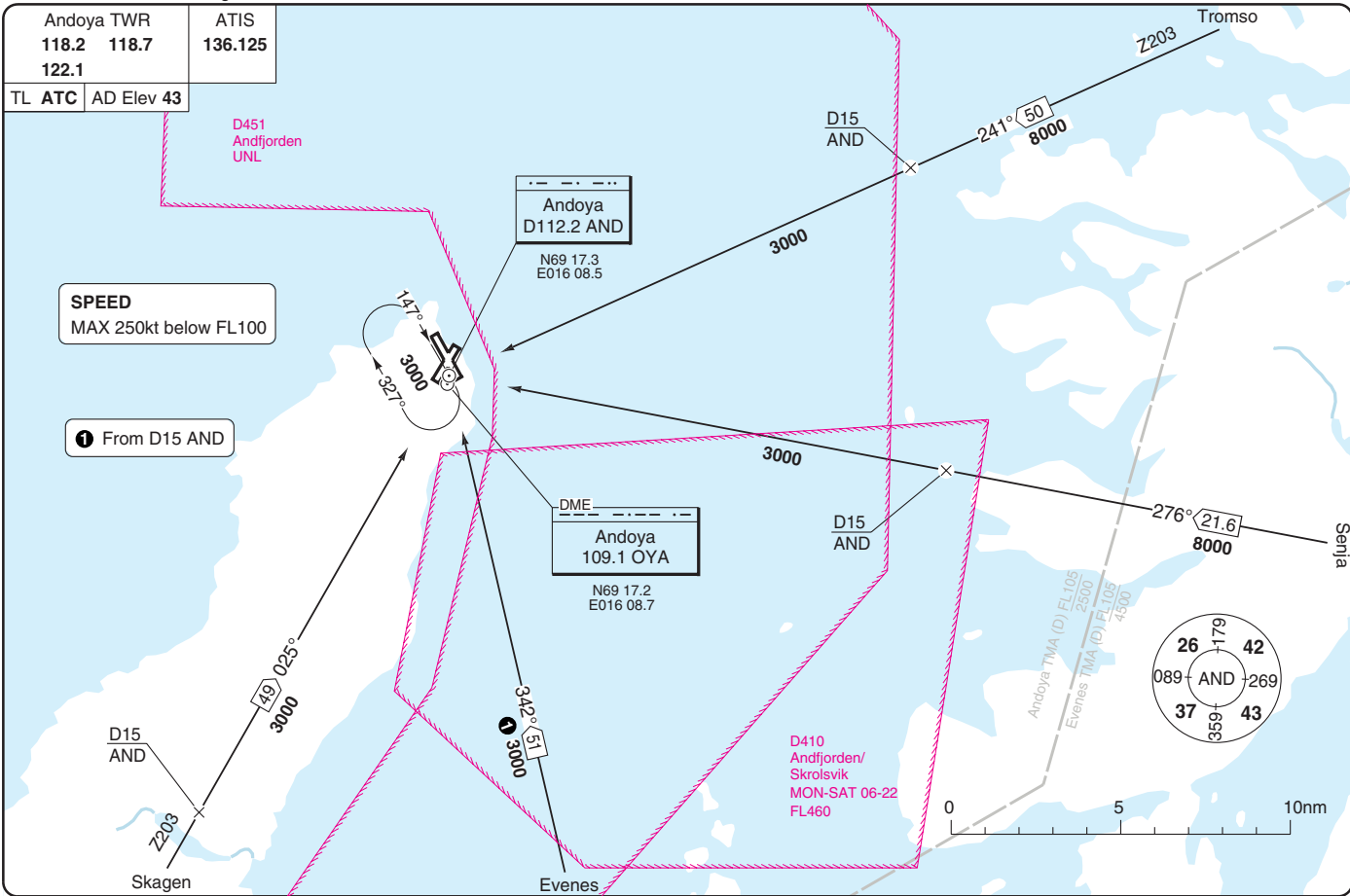
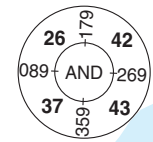
**SPEED**  
MAX 250kt below FL100

**1** From D15 AND

Andoya  
D112.2 AND  
N69 17.3  
E016 08.5

DME  
Andoya  
109.1 OYA  
N69 17.2  
E016 08.7

D410  
Andfjorden/  
Skrolsvik  
MON-SAT 06-22  
FL460

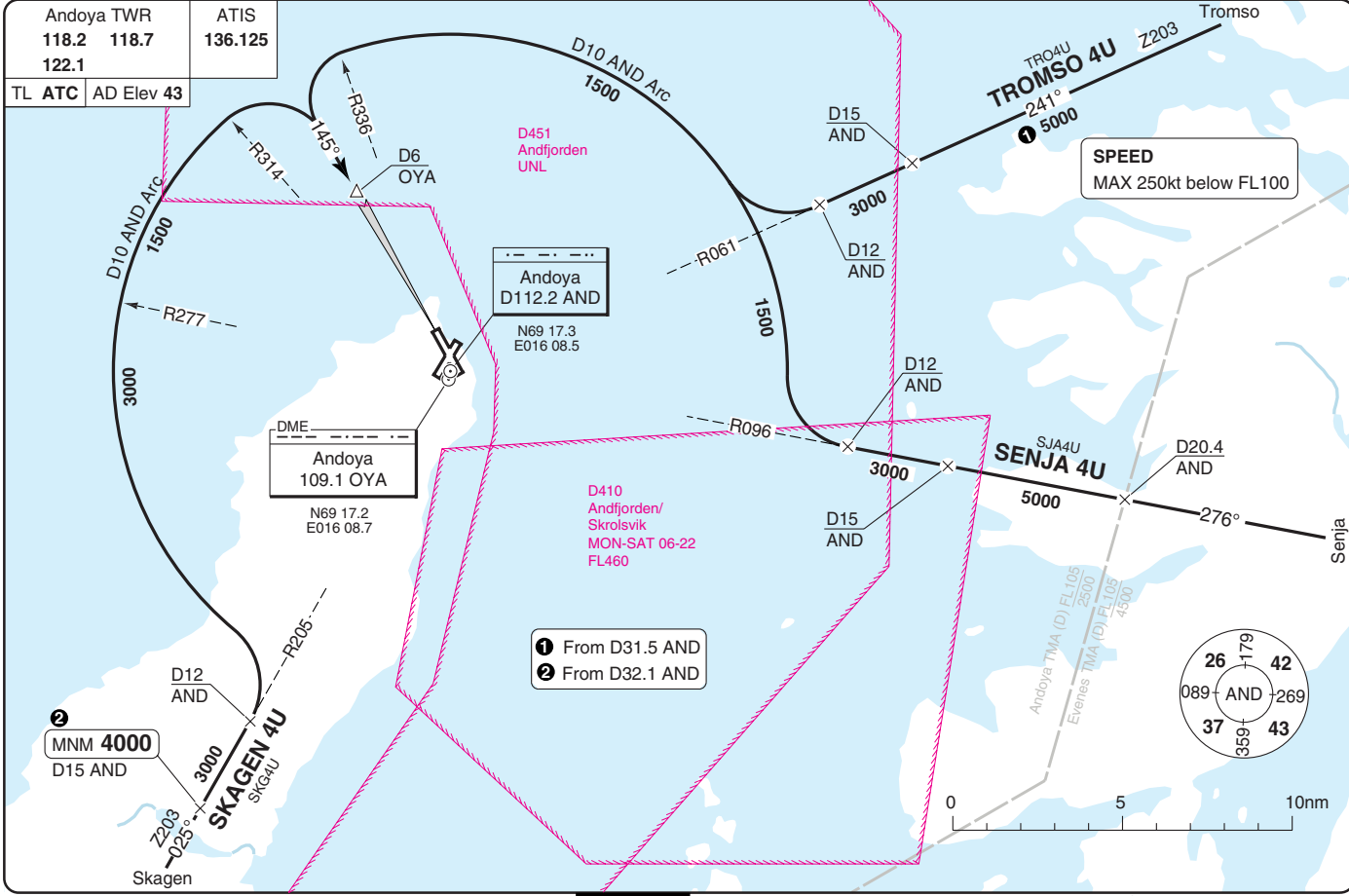


ARRIVAL Routes

40 - 1 | 20 JAN 12

Andoya ANDENES

Norway - ENAN / ANX



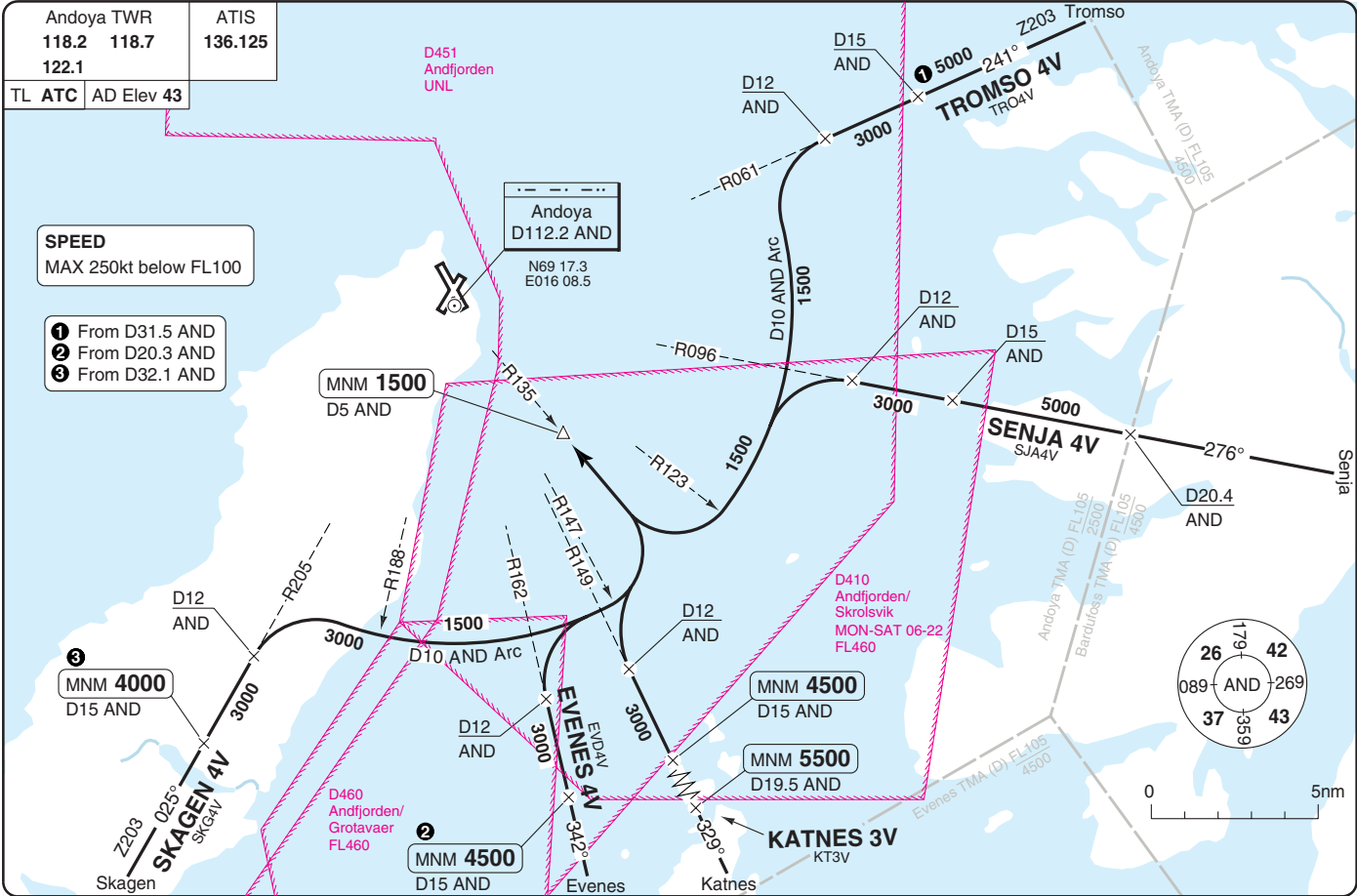
- ① From D31.5 AND
- ② From D32.1 AND

Andoya TWR	ATIS
118.2 118.7	136.125
122.1	
TL ATC	AD Elev 43

**SPEED**  
MAX 250kt below FL100

- ① From D31.5 AND
- ② From D20.3 AND
- ③ From D32.1 AND

THIS CHART IS A PART OF NAVIGRAPH NDAC AND IS INTENDED FOR FLIGHT SIMULATION USE ONLY

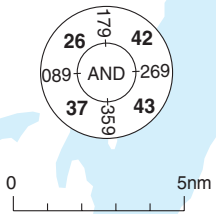


STAR RWY 32

40 - 3 | 20 JAN 12

Andoya ANDENES

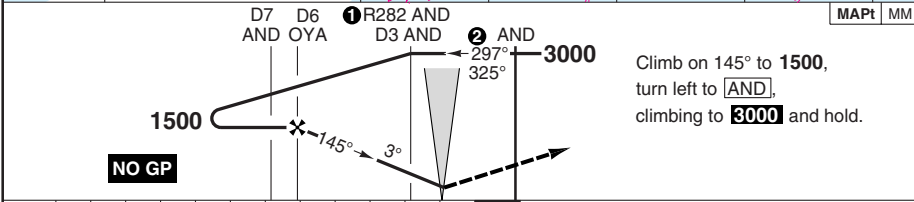
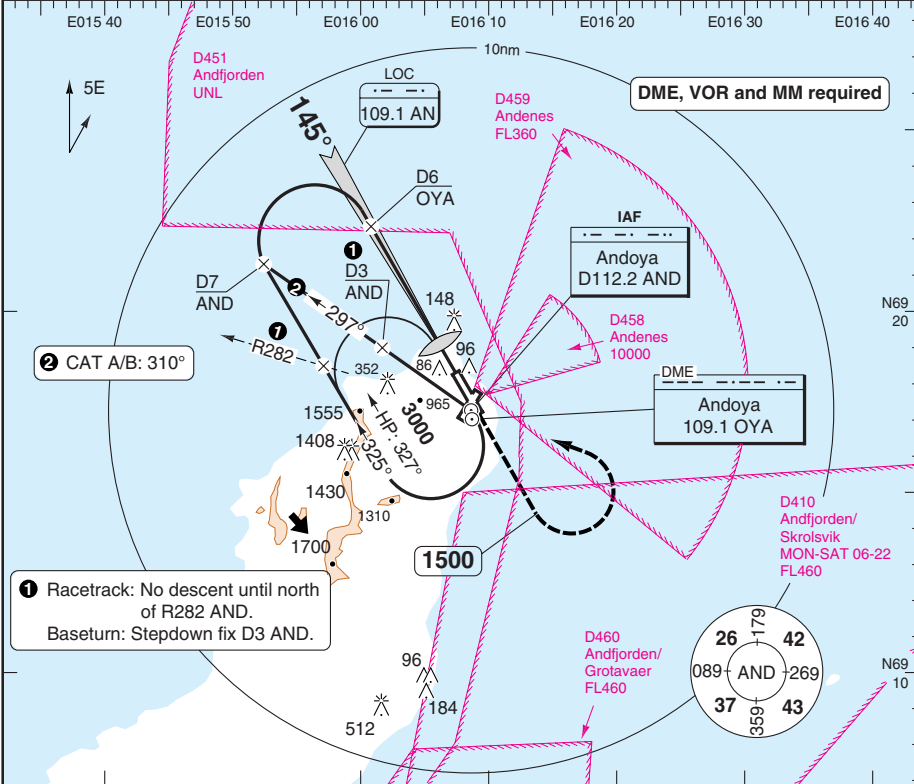
Norway - ENAN / ANX



# LOC RWY 14

Andoya TWR 118.2 118.7 122.1	ATIS 136.125
------------------------------------	-----------------

LOC 109.1 AN	FAT 145°	THR Elev 23	AD Elev 43	TL ATC	TA 7000
--------------	----------	-------------	------------	--------	---------



nm	12	11	10	9	8	7	6	5	4	3	2	1	0
----	----	----	----	---	---	---	---	---	---	---	---	---	---

ACFT	LOC+DME	Circling a	Circling b
A	280 (250) 750m	520 (480) 1.5km	520 (480) 1.5km
B		550 (500) 1.6km	1600 (1550) 1.6km
C		650 (600) 2.4km	2090 (2050) 2.4km
D		750 (700) 3.6km	NA

**a** Circling to RWY 21/32.  
**b** Circling to RWY 03.  
**Note:** No Circling in section BTN 217° - 317° FM ARP.

DME	3.0°	LDA 2468x45
OYA	ALT	8097x147ft
6	1500	P 3°L/R (45)
5	1190	
4	870	
3	550	
2.1	280	

GS	80	100	120	140	160
ROD 3.0°	430	530	640	750	850

Change: ATIS, Minima

© Navtech - enan01iaip00

FALS

50 - 1

# VOR RWY 14

Andoya TWR  
118.2 118.7  
122.1

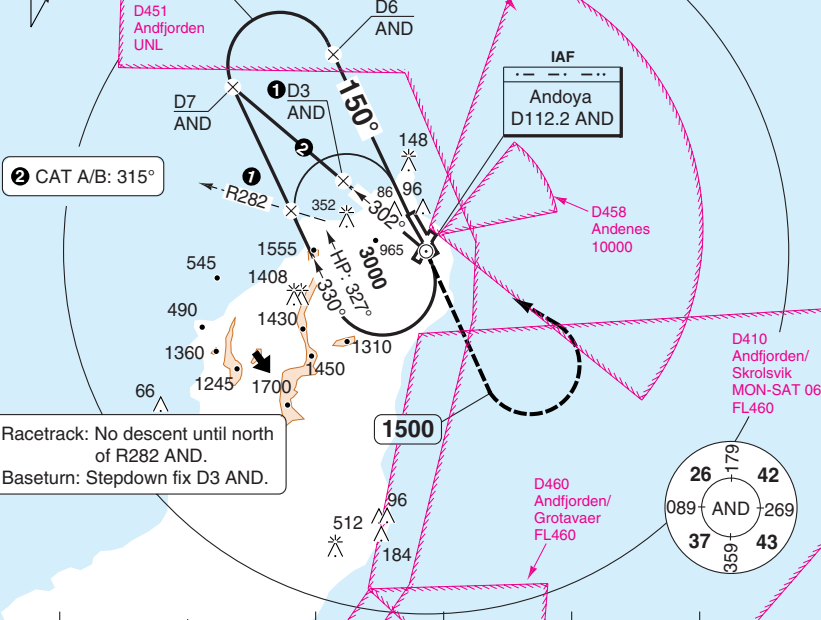
ATIS  
136.125

VOR/DME 112.2 **AND** | FAT 150° | THR Elev 23 | AD Elev 43 | TL ATC | TA 7000

E015 40 E015 50 E016 00 E016 10 E016 20 E016 30 E016 40

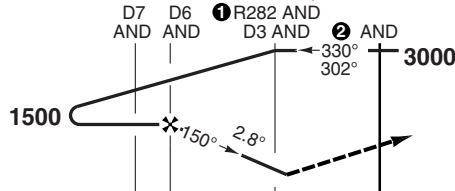
PANS OPS

50 - 2



2 CAT A/B: 315°

1 Racetrack: No descent until north of R282 AND.  
Baseturn: Stepdown fix D3 AND.



Climb on 150° to **[AND]**, continue on R150 **[AND]** to **1500** before reverting to **[AND]**, climbing to **3000** and hold.

MAPt | D2 AND

ACFT	VOR+DME	Circling a	Circling b
A	480 (450) 1400m	520 (480) 1.5km	520 (480) 1.5km
B		550 (500) 1.6km	1600 (1550) 1.6km
C		650 (600) 2.4km	2090 (2050) 2.4km
D		750 (700) 3.6km	NA

a Circling to RWY 21/32.  
b Circling to RWY 03.  
**Note:** No Circling in section BTN 217° - 317° FM ARP.

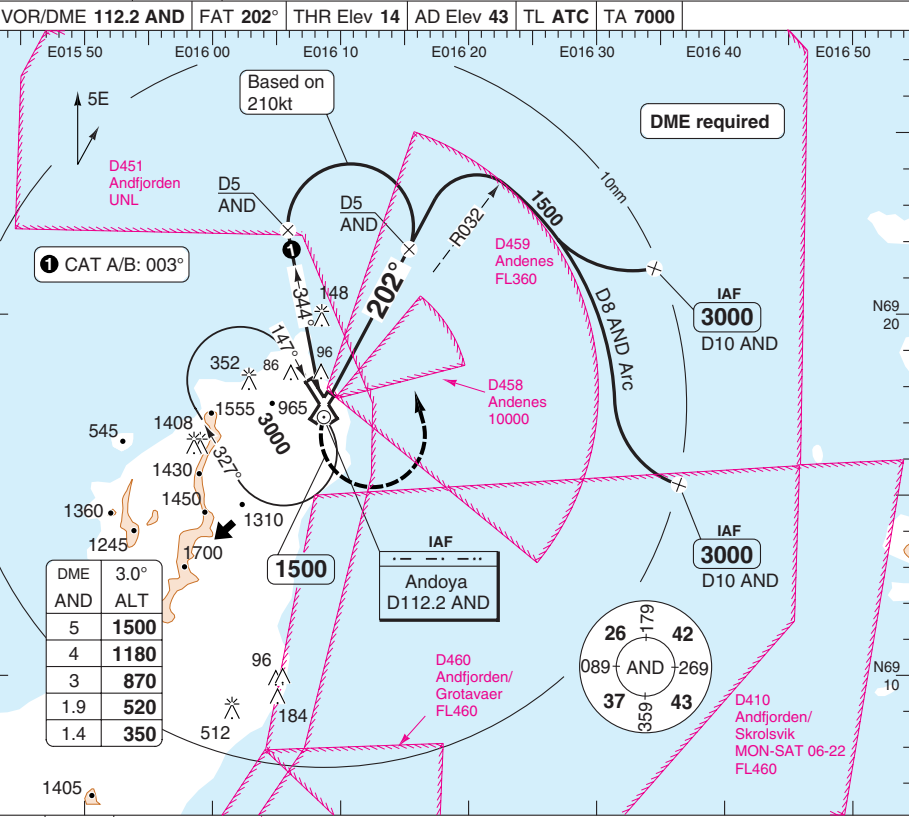
DME AND	2.8° ALT	LDA 2468x45 8097x147ft P 3°L/R (45)
6	1500	
5	1210	
4	910	
3	610	
2.6	480	

GS	80	100	120	140	160
ROD 2.8°	400	500	600	700	800

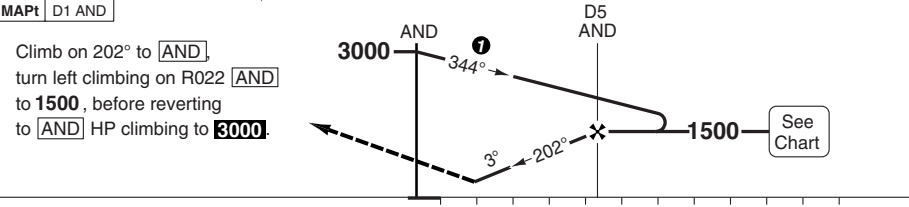
Change: ATIS, Minima

# VOR RWY 21

Andoya TWR 118.2 122.1	ATIS 118.7 136.125				
VOR/DME 112.2 AND	FAT 202°	THR Elev 14	AD Elev 43	TL ATC	TA 7000



DME	3.0°
AND	ALT
5	1500
4	1180
3	870
1.9	520
1.4	350



ACFT	VOR+DME <b>a</b>	VOR+DME	Circling <b>b</b>	Circling <b>c</b>	<b>a</b> Authorisation required.	LDA 1672x45 5485x147ft P 3°L/R (51)
A	350 (340) 1300m	520 (500) 1500m	520 (480) 1.5km <b>d</b>	520 (480) 1.5km <b>d</b>	<b>b</b> Circling to RWY 14/32.	
B			550 (500) 1.6km	1600 (1550) 1.6km	<b>c</b> Circling to RWY 03.	
C	520 (500) 2100m	650 (600) 2.4km	2090 (2050) 2.4km	<b>d</b> Authorisation required, otherwise 550 (500).	Note: No Circling in section BTN 217° - 317° FM ARP.	
D	NA	NA	NA	NA		

GS	80	100	120	140	160
ROD 3.0°	430	540	640	750	860

Change: ATIS

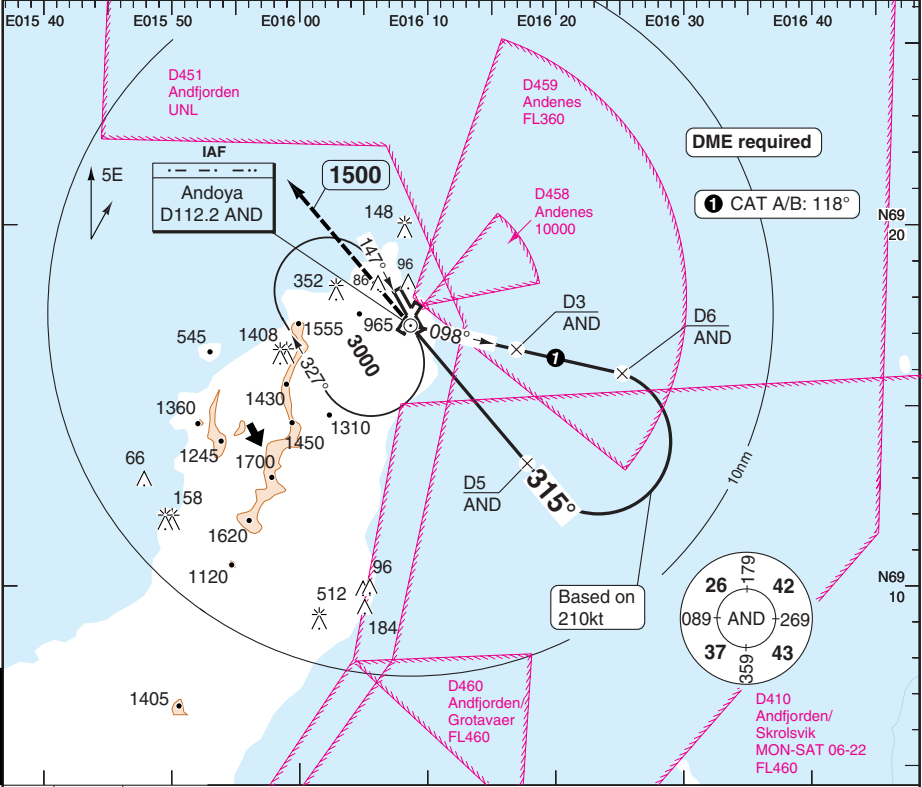
© Navtech - enan03iaip00

50 - 3

# VOR RWY 32

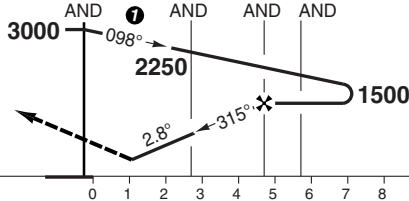
Andoya TWR ATIS  
118.2 118.7 136.125  
122.1

VOR/DME 112.2 AND FAT 315° THR Elev 14 AD Elev 43 TL ATC TA 7000



MAPt D1 AND

Climb on 315° to **AND**.  
Continue on R315 **AND** to  
1500 before reverting to  
**AND** HP, climbing to  
**3000**.



ACFT	VOR+DME	Circling a	Circling b
A	350 (340)	520 (480) 1.5km	520 (480) 1.5km
B	800m	550 (500) 1.6km	1600 (1550) 1.6km
C	350 (340)	650 (600) 2.4km	2090 (2050) 2.4km
D	1200m	750 (700) 3.6km	NA

**a** Circling to RWY 14/21.  
**b** Circling to RWY 03.  
**Note:** No Circling in section BTN  
217° - 317° FM ARP.

DME AND	2.8° ALT	LDA 2468x45
5	1500	8097x147ft
4	1210	P 3°L/R (47)
3	920	
2	630	
1.1	350	

GS	80	100	120	140	160
ROD 2.8°	400	490	590	690	790

Change: ATIS, Minima

50 - 4

EU OPS © Navtech - enan04aip00

FALS

**JAR-OPS Landing Minima**

The following Minima is for Public Transport aircraft and conforms to JAR-OPS1 regulations.

<b>STRAIGHT-IN APPROACH</b>		<b>C</b>				<b>D</b>			
R/W	Procedure	DA/ MDA QNH ft	DH/ MDH QFE ft	RVR m	RVR No ALS m	DA/ MDA QNH ft	DH/ MDH QFE ft	RVR m	RVR No ALS m
14	LOC/DME	<b>280</b>	250	800	1600	<b>280</b>	250	1200	1800
14	VOR/DME	<b>480</b>	450	1200	2000	<b>480</b>	450	1600	2000
21	VOR/DME	<b>360</b>	340	1600	1800	<b>N/A</b>	<b>N/A</b>	<b>N/A</b>	<b>N/A</b>
32	VOR/DME	<b>360</b>	340	1000	1800	<b>360</b>	340	1400	2000

Notes:

<b>CIRCLING</b>		<b>C</b>			<b>D</b>		
R/W	Procedure	MDA QNH ft	MDH QFE ft	Vis m	MDA QNH ft	MDH QFE ft	Vis m
All Runways to 03 (1)		<b>2100</b>	2050	2400	<b>N/A</b>	<b>N/A</b>	<b>N/A</b>
From 14 to 21/32 (1)		<b>650</b>	600	2400	<b>750</b>	700	3600
From 21 to 14/32 (1)		<b>650</b>	600	2400	<b>N/A</b>	<b>N/A</b>	<b>N/A</b>
From 32 to 14/21 (1)		<b>650</b>	600	2400	<b>750</b>	700	3600

Notes:

(1) Circling prohibited in sector 217° clockwise to 317° from ARP.

<b>TAKE-OFF</b>		<b>C</b>		<b>D</b>	
Runway	Facilities	RVR	Vis	RVR	Vis
All (HN only)	-	-	400	-	400
All (HJ only)	-	-	600	-	600

Notes:

**JAR-OPS Landing Minima**

The following Minima is for Public Transport aircraft and conforms to JAR-OPS1 regulations.

<b>STRAIGHT-IN APPROACH</b>		<b>A</b>				<b>B</b>			
R/W	Procedure	DA/ MDA QNH ft	DH/ MDH QFE ft	RVR m	RVR No ALS m	DA/ MDA QNH ft	DH/ MDH QFE ft	RVR m	RVR No ALS m
14	LOC/DME	<b>280</b>	250	800	1500	<b>280</b>	250	800	1500
14	VOR/DME	<b>480</b>	450	1000	1500	<b>480</b>	450	1200	1500
21	VOR/DME	<b>360</b>	340	1300	1500	<b>360</b>	340	1400	1500
32	VOR/DME	<b>360</b>	340	900	1500	<b>360</b>	340	1000	1500

Notes:

<b>CIRCLING</b>		<b>A</b>			<b>B</b>		
R/W	Procedure	MDA QNH ft	MDH QFE ft	Vis m	MDA QNH ft	MDH QFE ft	Vis m
All Runways to 03 (1)		<b>530</b>	480	1500	<b>1600</b>	1550	1600
From 14 to 21/32 (1)		<b>530</b>	480	1500	<b>550</b>	500	1600
From 21 to 14/32 (1)		<b>530</b>	480	1500	<b>550</b>	500	1600
From 32 to 14/21 (1)		<b>530</b>	480	1500	<b>550</b>	500	1600

Notes:

(1) Circling prohibited in sector 217° clockwise to 317° from ARP.

<b>TAKE-OFF</b>		<b>A</b>		<b>B</b>	
Runway	Facilities	RVR	Vis	RVR	Vis
All (HN only)	-	-	400	-	400
All (HJ only)	-	-	600	-	600

Notes: