

## Airport information:

Country: Denmark

City: AALBORG

Coordinates: N 57° 05.6', E009 51.0

Elevation: 10

Customs: Customs

Fuel: 100LL, Jet A1

RFF: CAT 7 and boats. Avbl during AD HR except for the first 30 MIN.

hours: AD (S)04-2130 (W)+1hr; ATS: H24

## Runways:

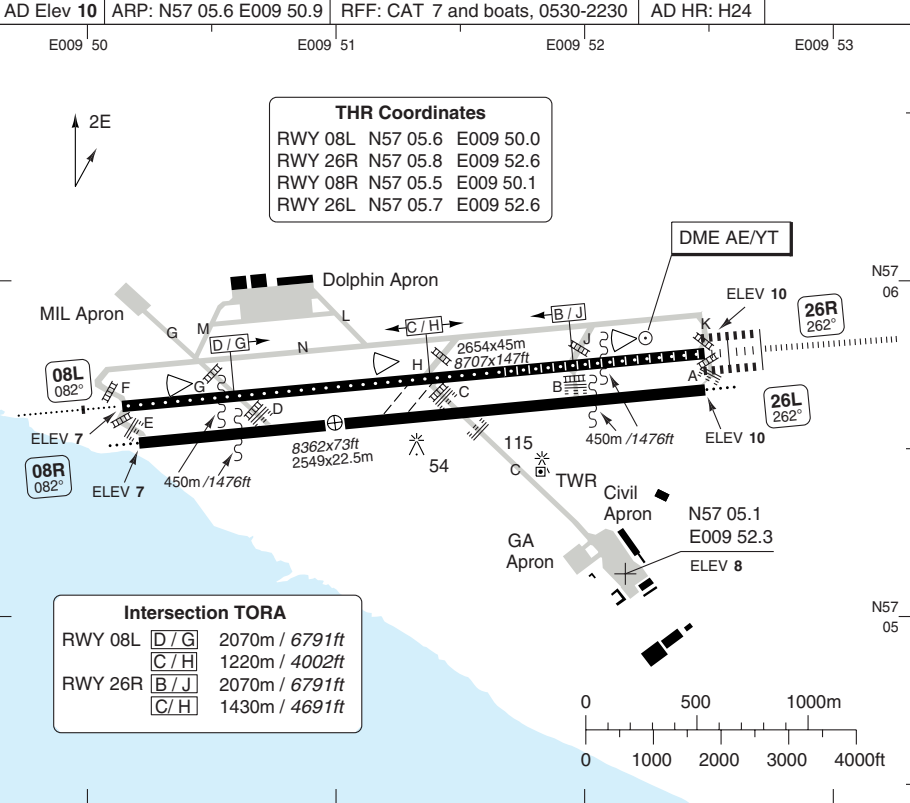
Runway 08L

Takeoff length: 2654, Landing length: 2654

Runway 26R

Takeoff length: 2654, Landing length: 2654

Aalborg TWR <b>118.3</b>	ATIS <b>120.475</b>	Handling <b>131.55</b>	
AD Elev <b>10</b>	ARP: N57 05.6 E009 50.9	RFF: CAT 7 and boats, 0530-2230	AD HR: H24



RWY	Slope	TORA m/ft	LDA m/ft	ALS	REDL	RCLL	Additional
08L	0	2654 / 8707	2654 / 8707	H-E ①	H ②	15m	P 2.75° L/R
26R	0	2654 / 8707	2654 / 8707	H-B	H ②	15m	P 2.75° L/R
08R	0	2549 / 8362	2549 / 8362	L-E ③	L	-	P 2.75° L/R
26L	0	2549 / 8362	2549 / 8362	L-E ③	L	-	P 2.75° L/R

① 470m. ② White. ③ 150m.

**EU OPS TAKE OFF MINIMA**

RWY	Facilities	RVR			
		A B C	D		
08L/26R	HRCLL + HREDL + Multiple RVR	<b>Ap.O</b>	<b>LVTO</b>	125m	150m
	RCLL + REDL + Multiple RVR		<b>LVTO</b>	150m	200m
	RCLL + REDL		<b>LVTO</b>	200m	250m
All	RCL (day only) or RCL + REDL		<b>LVTO</b>	250m	300m
	RCL (day only) or RCL + REDL			400m	400m
	NIL (day only)			500m	500m

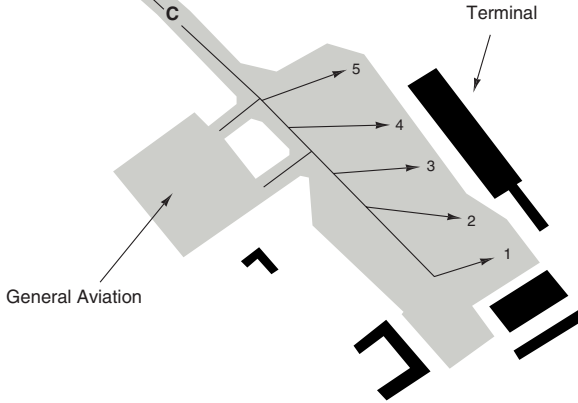
© Navitech - ekyt01laorg0

Change: Minima

**THIS CHART IS A PART OF NAVIGRAPH NDAC AND IS INTENDED FOR FLIGHT SIMULATION USE ONLY**

## AERODROME

10 - 2



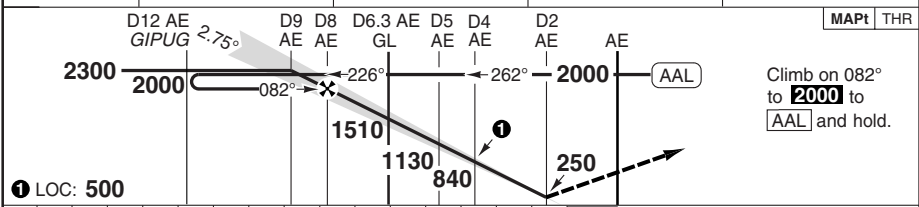
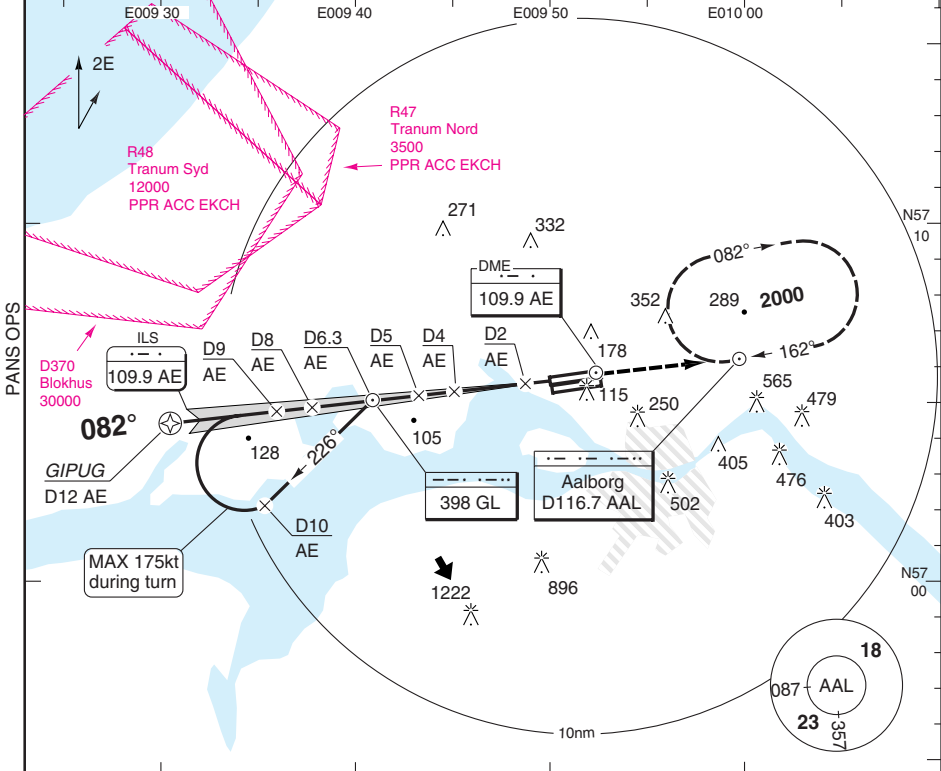
## GENERAL INFORMATION

1. **SPEED**  
MAX 250kt below FL100.
2. **TWY RESTRICTIONS**  
TWY C, D and E: Width 22m/72ft.  
TWY B: Width 15m/49ft.
3. **APU**  
Use of APU limited to 5min after on-block and 5min before leaving APN.  
When Temp (OAT) below -10°C or above +25°C APU may be used 5min after on-block and 15min before leaving APN.
4. **CAT 2**  
REQ CAT 2 approach to Copenhagen CTL by using the phrase "Request CAT 2 ILS approach RWY 26R". Request is to be confirmed on first contact with Aalborg APP.
5. **NOISE ABATEMENT PROC ARRIVAL**  
Do not overfly Aalborg city below 2300ft.
6. **NOISE ABATEMENT PROC DEPARTURE**  
Jet ACFT only:  
TKOF RWY 08L/R: No turns before D2 AAL on R262 AAL.  
TKOF RWY 26L/R: No turns towards South until passing 2000ft.
7. **TAXI**  
Exit from stand 1-5: To minimize blast on terminal, reduce power to idle after break away.
8. **OMNIDIRECTIONAL DEPARTURE PROC**  
RWY 08L/R and 26L/R: Climb on RWY QFU to MNM 600ft before turn is commenced.

ILS RWY 08L

Aalborg APP 123.975	TWR 118.3	ATIS 120.475	Handling 131.55
------------------------	--------------	-----------------	--------------------

ILS/DME 109.9 AE	FAT 082°	TDZ Elev 8	AD Elev 10	TL ATC	TA 3000
------------------	----------	------------	------------	--------	---------



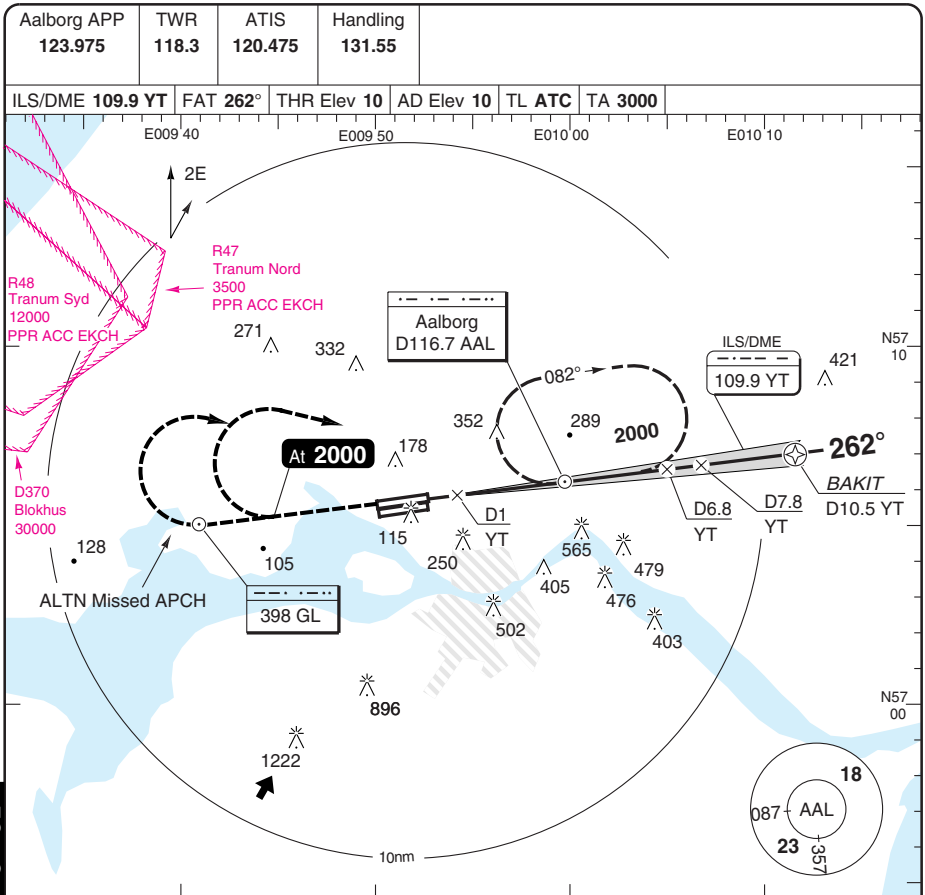
① LOC: 500

nm	15	14	13	12	11	10	9	8	7	6	5	4	3	2	1	0	TCH 37					
ACFT	ILS+DME																DME AE		2.7° ALT		LDA 2654x45 8707x147ft P 2.75°	
A	210 (200)		340 (330)		490 (480)		510 (500)		730 (720)		780 (770)		250		250		9	2300	IALS			
B	750m		1100m		1.5km		1.6km		2.4km		3.6km		250		250		8	2000				
C					1.5km		1.6km		2.4km		3.6km		250		250		7	1720				
D	220 (209) 750m				1.5km		1.6km		2.4km		3.6km		250		250		6	1430				
					1.5km		1.6km		2.4km		3.6km		250		250		5	1140				
					1.5km		1.6km		2.4km		3.6km		250		250		4	850				
					1.5km		1.6km		2.4km		3.6km		250		250		3	560				
GS	80	100	120	140	160																	
ROD 2.7°	390	490	590	680	780																	
																	2.3	340	470			

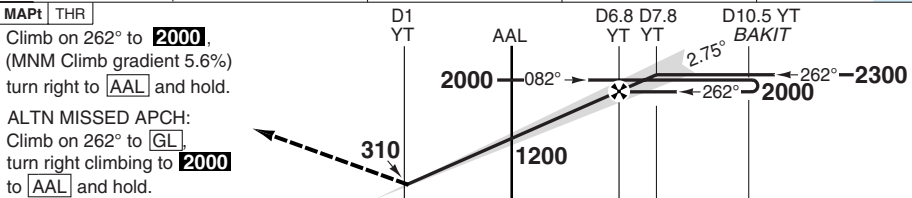
Change: GIPUG

# ILS RWY 26R

# AALBORG



50 - 2



TCH 35

ACFT	CAT II	ILS+DME	LOC+DME+VOR a	Circling	a Minima not published when based on OCL. b North of AD only	DME YT	2.8° ALT	LDA 2654X45 8707x147ft P 2.75°
A				490 (480) 1.5km		6.8	2000	
B	RA 101	210 (200)	OCL	510 (500) 1.6km b		6	1760	
C	300m	550m	292 MSL	730 (720) 2.4km b		5	1470	
D				780 (770) 3.6km b		4	1180	
						3	890	
						2	600	
						1.0	310	

GS	80	100	120	140	160
ROD 2.8°	400	490	590	690	790

© Navtech - ekvt02iaip00

FALS

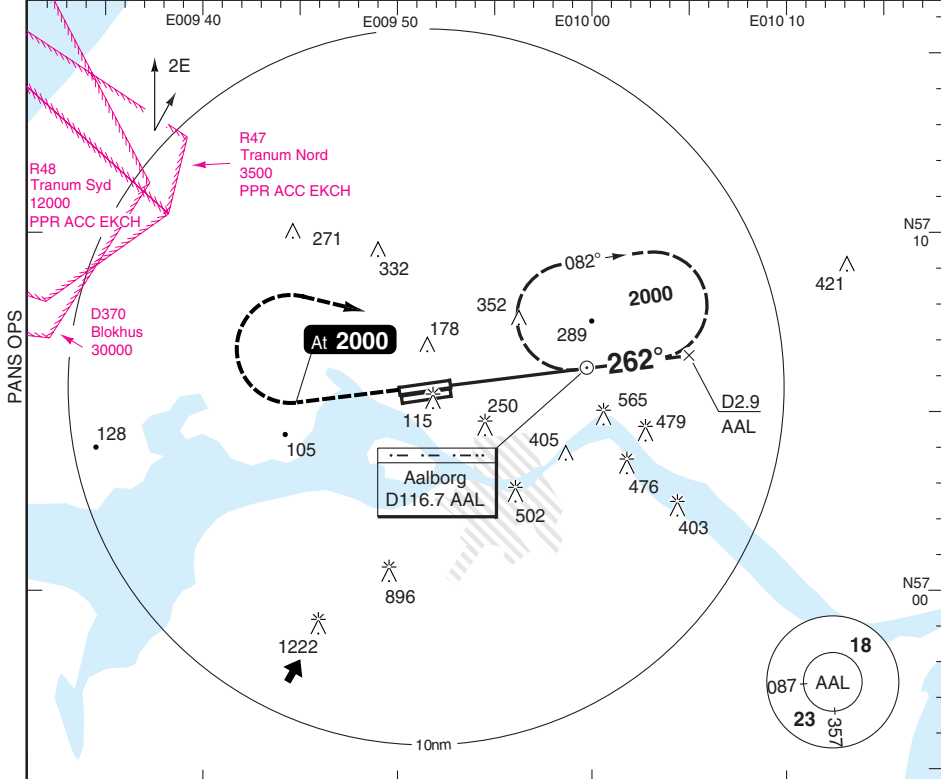
Change: Min

# VOR RWY 26R

# AALBORG

Aalborg APP 123.975	TWR 118.3	ATIS 120.475	Handling 131.55
------------------------	--------------	-----------------	--------------------

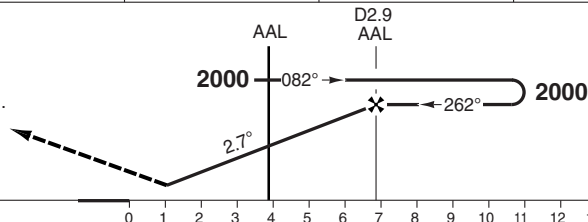
VOR/DME 116.7 AAL	FAT 262°	THR Elev 10	AD Elev 10	TL ATC	TA 3000
-------------------	----------	-------------	------------	--------	---------



50 - 3

MAPt THR

Climb on 262° to **2000**,  
turn right to **AAL** and hold.



ACFT	<b>VOR+DME</b> <sup>a</sup>	<b>Circling</b>	<sup>a</sup> Minima not published when based on OCL.					DME 2.7°	LDA 2654x45
A	OCL 450 MSL	490 (480) 1.5km	<sup>b</sup> North of AD only					AAL ALT	8707x147ft
B		510 (500) 1.6km <sup>b</sup>						2.9	2000
C		730 (720) 2.4km <sup>b</sup>						2	1720
D		780 (770) 3.6km <sup>b</sup>						1	1430
GS	80	100	120	140	160				
ROD 2.7°	390	490	590	680	780				
AAL-MAPt	2:58	2:22	1:59	1:41	1:29				

© Navtech - ekvt03iaip00

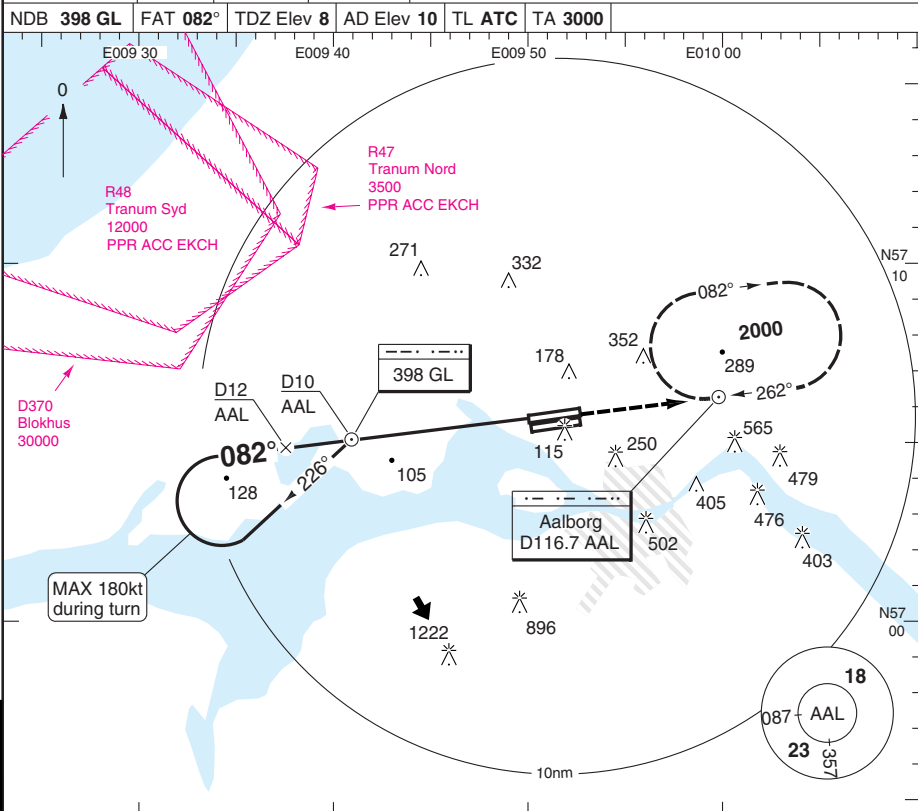
FALS

Change: Min

# NDB RWY 08L

# AALBORG

Aalborg APP 123.975	TWR 118.3	ATIS 120.475	Handling 131.55
NDB 398 GL	FAT 082°	TDZ Elev 8	AD Elev 10
TL ATC	TA 3000		



© Navtech - ekvt04iaip00

Change: New print

**THIS CHART IS A PART OF NAVIGRAPH NDAC AND IS INTENDED FOR FLIGHT SIMULATION USE ONLY**

## JAR-OPS Landing Minima

## AALBORG

The following Minima is for Public Transport aircraft and conforms to JAR-OPS1 regulations.

STRAIGHT-IN APPROACH		C				D			
R/W	Procedure	DA/ MDA QNH ft	DH/ MDH QFE ft	RVR m	RVR No ALS m	DA/ MDA QNH ft	DH/ MDH QFE ft	RVR m	RVR No ALS m
08L	ILS/DME	210	200	700	1000	220	210	700	1000
08L	LOC/DME	340	330	1400	1800	340	330	1600	2000
26R	ILS/DME	210	200	550	1000	210	200	550	1000

Notes:

Navtech does not publish minima based on OCL. State published OCL values are:

RWY 08L - NDB/DME: 505 msl.

RWY 26R - LOC/DME: 292 msl.

RWY 26R - VOR/DME: 450 msl.

CIRCLING		C			D		
R/W	Procedure	MDA QNH ft	MDH QFE ft	Vis m	MDA QNH ft	MDH QFE ft	Vis m
08L	NDB/DME to CIRC (1)	730	720	2400	780	770	3600
26R	VOR/DME to CIRC (1)	730	720	2400	780	770	3600
	All other procs (1)	730	720	2400	780	770	3600

Notes:

(1) Cat B, C, D North of aerodrome only.

TAKE-OFF		C		D	
Runway	Facilities	RVR	Vis	RVR	Vis
08L/26R (1)	RCLL(H) + REDL(H) + Multi RVR	125	-	150	-
08L/26R (1)	RCLL + REDL + Multi RVR	150	-	200	-
08L/26R (1)	RCLL + REDL	200	-	250	-
All (1)	RCL and/or REDL	250	-	300	-
All	RCL and/or REDL	400	-	400	-
All	Nil (Day only)	500	-	500	-

Notes:

(1) LVP must be in force

## JAR-OPS Landing Minima

## AALBORG

The following Minima is for Public Transport aircraft and conforms to JAR-OPS1 regulations.

STRAIGHT-IN APPROACH		A				B			
R/W	Procedure	DA/ MDA QNH ft	DH/ MDH QFE ft	RVR m	RVR No ALS m	DA/ MDA QNH ft	DH/ MDH QFE ft	RVR m	RVR No ALS m
08L	ILS/DME	210	200	700	1000	210	200	700	1000
08L	LOC/DME	340	330	1200	1500	340	330	1300	1500
26R	ILS/DME	210	200	550	1000	210	200	550	1000

Notes:

Navtech does not publish minima based on OCL. State published OCL values are:

RWY 08L - NDB/DME: 505 msl.

RWY 26R - LOC/DME: 292 msl.

RWY 26R - VOR/DME: 450 msl.

CIRCLING		A			B		
R/W	Procedure	MDA QNH ft	MDH QFE ft	Vis m	MDA QNH ft	MDH QFE ft	Vis m
08L	NDB/DME to CIRC (1)	490	480	1500	510	500	1600
26R	VOR/DME to CIRC (1)	490	480	1500	510	500	1600
	All other procs (1)	490	480	1500	510	500	1600

Notes:

(1) Cat B, C, D North of aerodrome only.

TAKE-OFF		A		B	
Runway	Facilities	RVR	Vis	RVR	Vis
08L/26R (1)	RCLL(H) + REDL(H) + Multi RVR	125	-	125	-
08L/26R (1)	RCLL + REDL + Multi RVR	150	-	150	-
08L/26R (1)	RCLL + REDL	200	-	200	-
All (1)	RCL and/or REDL	250	-	250	-
All	RCL and/or REDL	400	-	400	-
All	Nil (Day only)	500	-	500	-

Notes:

(1) LVP must be in force

## JAR-OPS Landing Minima

AALBORG

The following Minima is for Public Transport aircraft and conforms to JAR-OPS1 regulations.

**CAT II**

Special aircrew and aircraft certification required.

Runways	C				D			
	DA	DH	RA	RVR	DA	DH	RA	RVR
	QNH	QFE			QNH	QFE		
	ft	ft	ft	m	ft	ft	ft	m
26R (1)	110	100	101	300	110	100	101	350

Notes:

1) Cat D RVR may be reduced to 300m when conducting autoland.

Runways	A				B			
	DA	DH	RA	RVR	DA	DH	RA	RVR
	QNH	QFE			QNH	QFE		
	ft	ft	ft	m	ft	ft	ft	m
26R	110	100	101	300	110	100	101	300

Notes:

## HELICOPTER

## AALBORG

The following Minima is for Public Transport Helicopters and conforms to JAR-OPS3 regulations.

**STRAIGHT-IN APPROACH**

R/W	Procedure	DA/ MDA QNH ft	DH/ MDH QFE ft	Full >=720 RVR m	Inter 420-719 RVR m	Basic < 420 RVR m	No ALS RVR m
08L	ILS/DME	210	200	N/A	600	700	1000
08L	LOC/DME	340	330	N/A	1000	1000	1000
26R	ILS/DME	210	200	500	600	700	1000

Notes:

Navtech does not publish minima based on OCL. State published OCL values are:

RWY 08L - NDB/DME: 505 msl.

RWY 26R - LOC/DME: 292 msl.

RWY 26R - VOR/DME: 450 msl.

**CIRCLING**

R/W	Procedures	MDA QNH ft	MDH QFE ft	Vis m
08L	NDB/DME to CIRC	490	480	800
26R	VOR/DME to CIRC	490	480	800
	All other procs	490	480	800

Notes: