

## Airport information:

Country: Denmark

City: STAUNING

Coordinates: N 55° 59.4', E008 21.2

Elevation: 17

Customs: Customs PN 1HR

Fuel: 100LL, Jet A1

RFF: CAT 4, PPR 3 HR before FLT

hours: MON-FRI 0600-1430

## Runways:

Runway 09

Takeoff length: 1199, Landing length: 1199

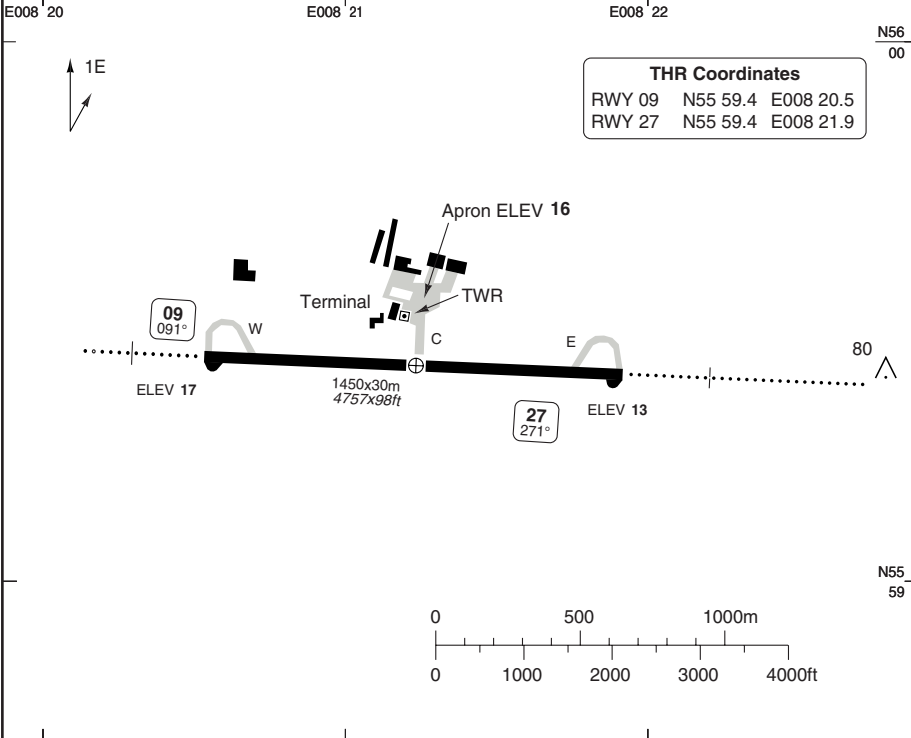
Runway 27

Takeoff length: 1199, Landing length: 1199

# AERODROME

Stauning AFIS  
**121.4**

AD Elev 17 | ARP: N55 59.4 E008 21.2 | RFF: CAT 4 PPR 3H | AD HR: MON - FRI 0700-1530



RWY	Slope	TORA m/ft	LDA m/ft	APL	REDL	Additional
09	0	1199 / 3933	1199 / 3933	H-E ①	H ②	P 3°
27	0	1199 / 3933	1199 / 3933	H-E	H ②	P 3°

① 420m. ② White.

**EU OPS TAKE OFF MINIMA**

RWY	Facilities	RVR		
		A	B	C
09/27	RCL (day only) or RCL + REDL			400m
	NIL (day only)			500m

## AERODROME

## STAUNING

10 - 2

## GENERAL

1. **AERODROME RESTRICTION**  
Pilot activated lighting outside AD HR.  
Further details obtained from AD.
2. **SPEED**  
MAX 250kt below FL100.
3. **TWY RESTRICTION**  
All TWY width 15m/49ft.  
  
TWY C lighted.  
  
TWYs E and W day use only.  
  
TWY E: MAX wingspan 36m/118ft.  
MAX wheel base 11m/36ft.  
MAX wheel span 4.5m/14ft.

TWY W: MAX wingspan 23m/75ft.  
MAX wheel base 11m/36ft.  
MAX wheel span 4.5m/14ft.

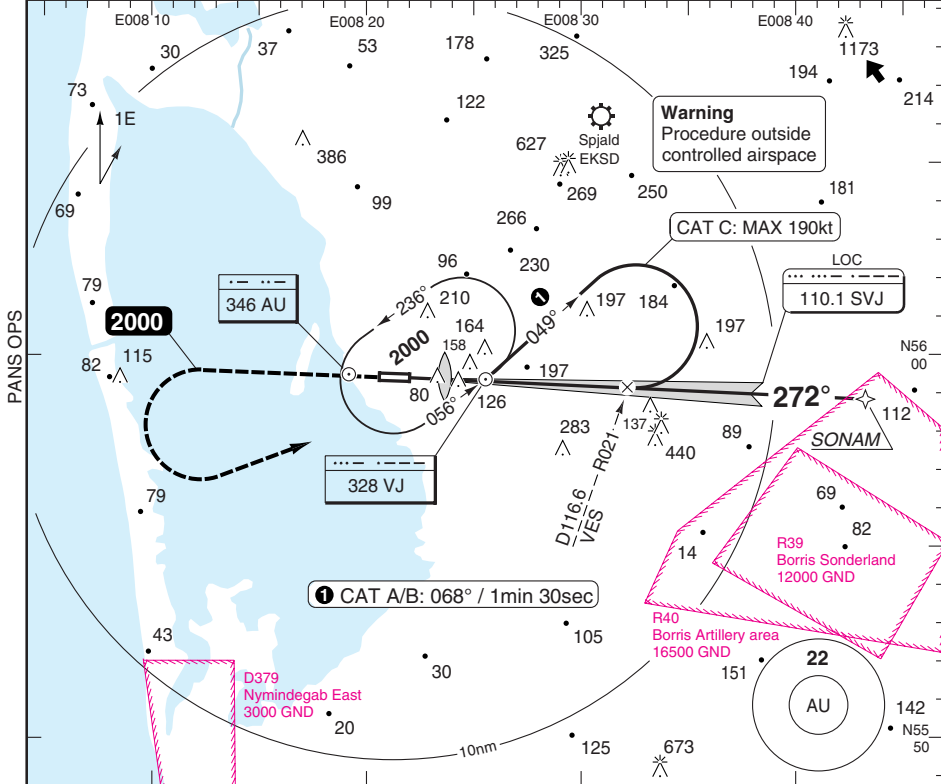
## DEPARTURE

1. **OMNIDIRECTIONAL DEPARTURE PROC**  
RWY 09  
Climb on 092° to MNM **600** before turn  
is commenced.  
  
RWY 27  
Climb on 272° to MNM **600** before turn  
is commenced.

**LOC RWY 27 CAT A/B/C**

Billund APP 127.575    Stauning AFIS 121.4

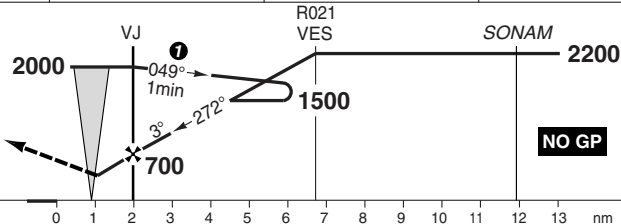
LOC 110.1 SVJ    FAT 272°    THR Elev 13    AD Elev 17    TL ATC    TA 3000



MAPt THR / 2nm after VJ

Climb on 272° to **2000**, turn left to **VJ** and hold.

**Non CDFA**



**NO GP**

ACFT	LOC+NDB	Circling
A	<b>380</b> (360) 1100m	<b>460</b> (450) 1.5km
B		<b>640</b> (630) 1.6km
C	<b>380</b> (360) 1300m	<b>910</b> (890) 2.4km
D	<b>NA</b>	<b>NA</b>

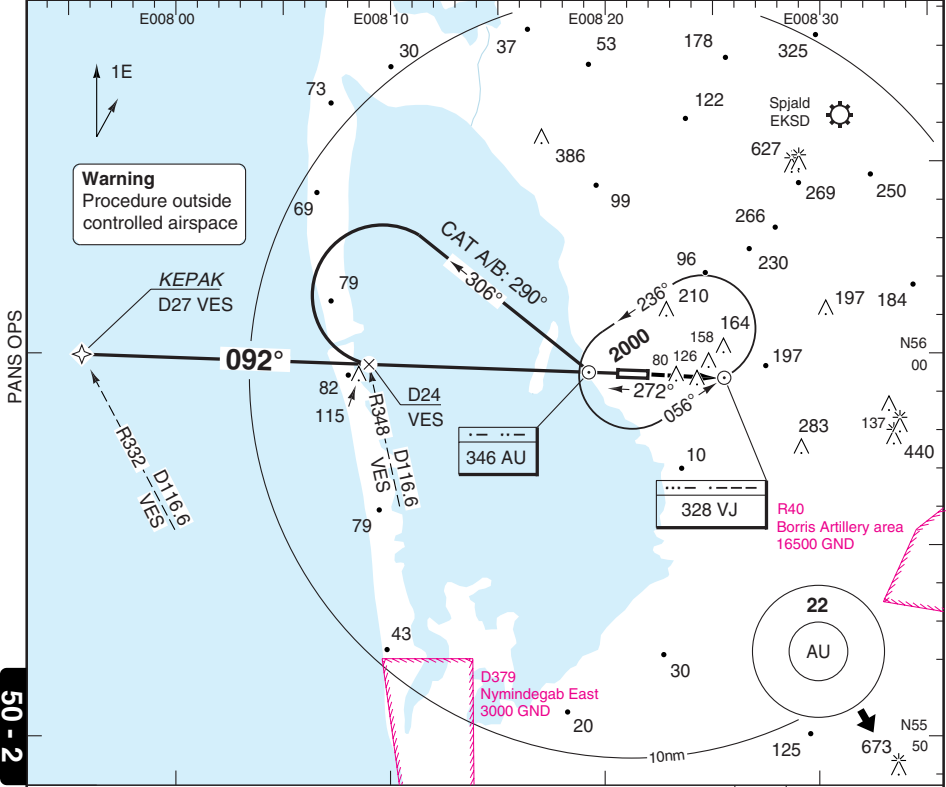
LDA 1199x30  
 3933x98ft  
 P 3°

FALS

**NDB RWY 09** CAT A/B/C

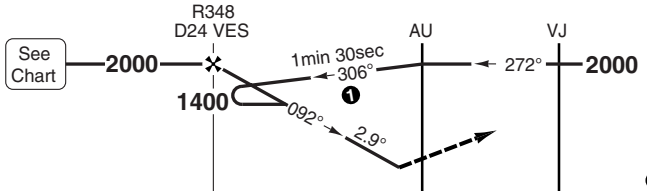
Billund APP 127.575      Stauning AFIS 121.4

NDB 346 AU    FAT 092°    THR Elev 17    AD Elev 17    TL ATC    TA 3000



PANS OPS

50 - 2



MAPt THR / 0.8nm after AU

Climb on 092° to **2000** to **VJ** and hold.

ACFT	NDB	Circling
A	<b>460</b> (450) 1500m	<b>460</b> (450) 1.5km <b>640</b> (630) 1.6km
B		
C	<b>460</b> (450) 1700m	<b>910</b> (890) 2.4km
D	<b>NA</b>	<b>NA</b>

GS	80	100	120	140	160
ROD 2.9°	420	530	630	730	840
FAF +20s	<b>1870</b>	<b>1830</b>	<b>1800</b>	<b>1760</b>	<b>1730</b>
+40s	<b>1730</b>	<b>1660</b>	<b>1590</b>	<b>1520</b>	<b>1450</b>
+60s	<b>1590</b>	<b>1480</b>	<b>1380</b>	<b>1280</b>	<b>1170</b>
FAF- <b>460</b>	3:42	2:58	2:28	2:07	1:51

LDA 1199X30  
 3933x98ft  
 P 3°

420

IALS

© Navtech - ekvj02iaip00

Change: New spec.

**THIS CHART IS A PART OF NAVIGRAPH NDAC AND IS INTENDED FOR FLIGHT SIMULATION USE ONLY**



## JAR-OPS Landing Minima

## STAUNING

The following Minima is for Public Transport aircraft and conforms to JAR-OPS1 regulations.

STRAIGHT-IN APPROACH		C				D			
R/W	Procedure	DA/ MDA QNH ft	DH/ MDH QFE ft	RVR m	RVR No ALS m	DA/ MDA QNH ft	DH/ MDH QFE ft	RVR m	RVR No ALS m
09	NDB	470	450	1600	2000	N/A	N/A	N/A	N/A
27	LOC	380	360	1000	1800	N/A	N/A	N/A	N/A
27	NDB	420	400	1000	1800	N/A	N/A	N/A	N/A

Notes:

CIRCLING		C			D		
R/W	Procedure	MDA QNH ft	MDH QFE ft	Vis m	MDA QNH ft	MDH QFE ft	Vis m
All procedures		910	890	2400	N/A	N/A	N/A

Notes:

TAKE-OFF		C		D	
Runway	Facilities	RVR	Vis	RVR	Vis
09/27	REDL and/or RCL	400	-	N/A	N/A
09/27	Nil (Day only)	500	-	N/A	N/A

Notes:

## JAR-OPS Landing Minima

## STAUNING

The following Minima is for Public Transport aircraft and conforms to JAR-OPS1 regulations.

STRAIGHT-IN APPROACH		A				B			
R/W	Procedure	DA/ MDA QNH ft	DH/ MDH QFE ft	RVR  m	RVR No ALS m	DA/ MDA QNH ft	DH/ MDH QFE ft	RVR  m	RVR No ALS m
09	NDB	470	450	1400	1500	470	450	1500	1500
27	LOC	380	360	900	1500	380	360	1000	1500
27	NDB	420	400	900	1500	420	400	1000	1500

Notes:

CIRCLING		A			B		
R/W	Procedure	MDA QNH ft	MDH QFE ft	Vis m	MDA QNH ft	MDH QFE ft	Vis m
All procedures		470	450	1500	650	630	1600

Notes:

TAKE-OFF		A		B	
Runway	Facilities	RVR	Vis	RVR	Vis
09/27	REDL and/or RCL	400	-	400	-
09/27	Nil (Day only)	500	-	500	-

Notes:

## HELICOPTER

## STAUNING

The following Minima is for Public Transport Helicopters and conforms to JAR-OPS3 regulations.

**STRAIGHT-IN APPROACH**

R/W	Procedure	DA/ MDA QNH ft	DH/ MDH QFE ft	Full >=720 RVR m	Inter 420-719 RVR m	Basic < 420 RVR m	No ALS RVR m
09	NDB	470	450	N/A	1000	1000	1000
27	LOC	380	360	800	1000	1000	1000
27	NDB	420	400	800	1000	1000	1000

Notes:

**CIRCLING**

R/W	Procedures	MDA QNH ft	MDH QFE ft	Vis m
All procedures		470	450	800

Notes: