

Airport information:

Country: Denmark

City: ESBJERG

Coordinates: N 55° 31.6', E008 33.2

Elevation: 97

Customs: Customs

Fuel: 100LL, Jet A1

RFF: CAT 5 MON-FRI 0600-1700 (CAT 7 1HR PPR)

hours: AD: MON-FRI 0600-2100, SAT 0800-1700, SUN 0800-1900.

Runways:

Runway 08

Takeoff length: 2599, Landing length: 2599

Runway 26

Takeoff length: 2599, Landing length: 2599

AERODROME

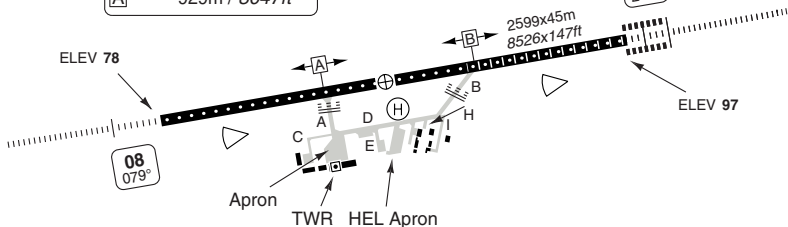
Esbjerg AFIS
120.15

AD Elev **97** | ARP: N55 31.6 E008 33.2 | RFF: **1** | AD HR: **2**

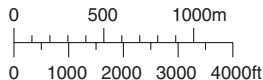
E008 31 E008 32 E008 33 E008 34 E008 35



Intersection TORA	
RWY 08	
A	1695m / 5561ft
B	945m / 3100ft
RWY 26	
B	1679m / 5508ft
A	929m / 3047ft



THR Coordinates	
RWY 08	N55 31.4 E008 32.0
RWY 26	N55 31.7 E008 34.4



RWY	Slope	TORA m/ft	LDA m/ft	APL	REDL	RCLL	Additional
08	+0.2	2599 / 8526	2599 / 8526	H-D	H 3	30m	P 3°
26	-0.2	2599 / 8526	2599 / 8526	H-B	H 3	30m	P 3°

3 White **2** MON-FRI 06-21, SAT 08-17, SUN 08-19.

1 CAT 5 : MON-FRI 06-17 EXC HOL. CAT 7 : 1 HR PPR.

EU OPS

TAKE OFF MINIMA

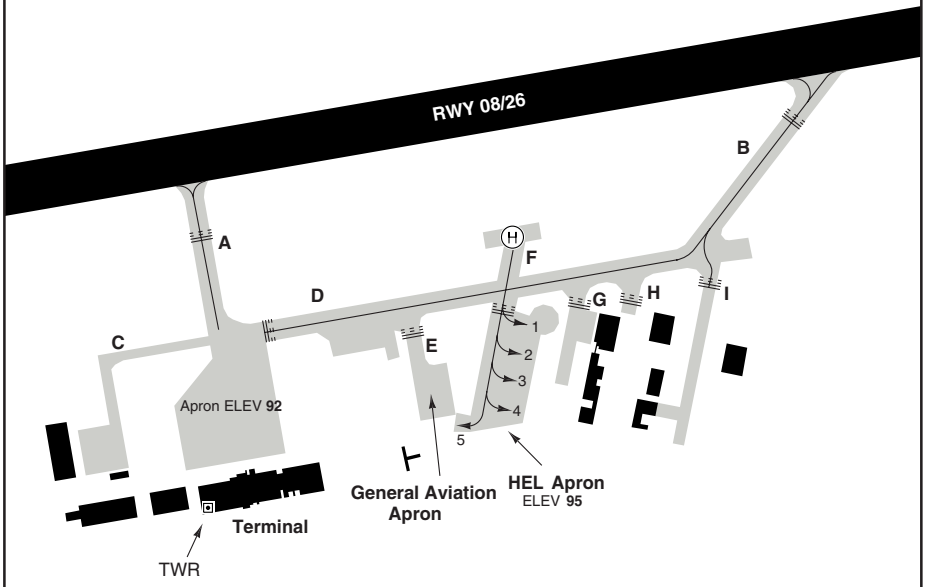
RWY	Facilities	RVR	
		A B C	D
08/26	RCLL + REDL + Multiple RVR	LVTO	150m / 200m
	RCLL + REDL	LVTO	200m / 250m
	RCL (day only) or RCL + REDL	LVTO	250m / 300m
	RCL (day only) or RCL + REDL		400m / 400m
	NIL (day only)		500m / 500m

AERODROME

10 - 2

Esbjerg AFIS
 120.15

Helicopter Parking position Coordinate	
1-3	N55 31.4 E008 33.2
4, 5	N55 31.3 E008 33.2



GENERAL INFORMATION

- | | |
|---|---|
| <p>1. COMMUNICATION
 Esbjerg Handling: 131.55</p> <p>2. TWY RESTRICTION
 TWY B, D width 15m/49ft.
 TWY C width 7.5m/24ft.</p> | <p>3. OMNIDIRECTIONAL DEPARTURE PROC
 Do not initiate turn before 700ft.</p> |
|---|---|

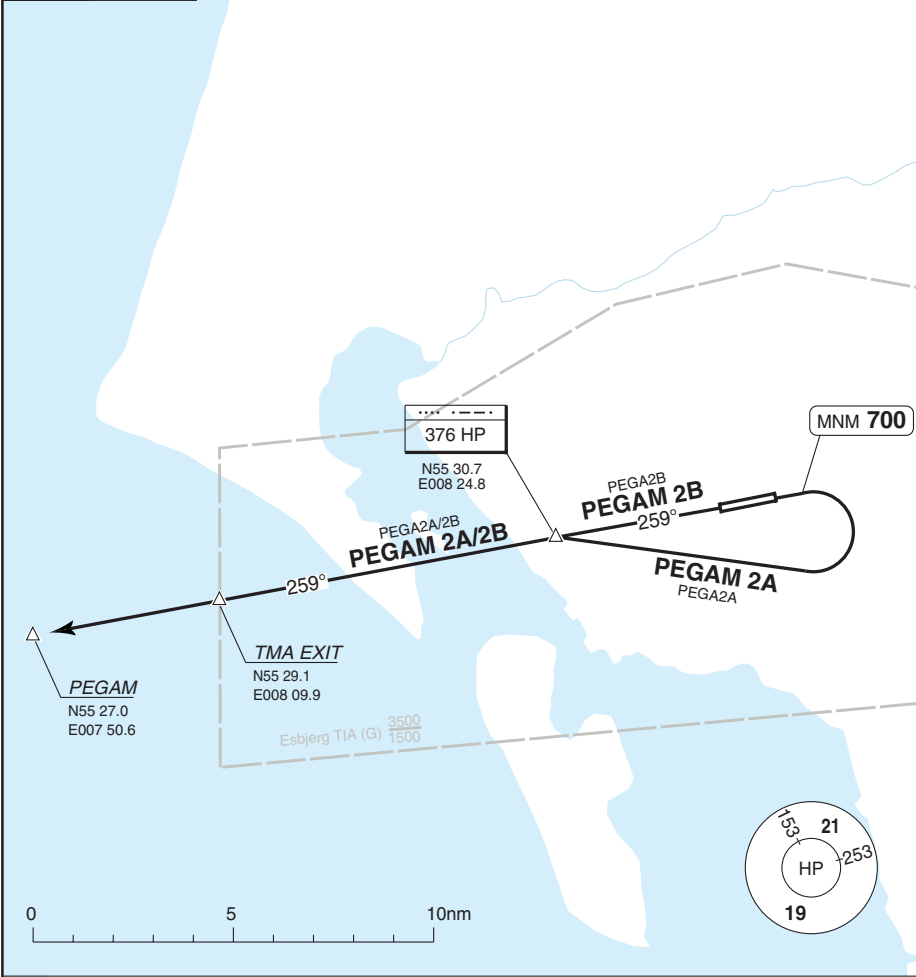
SID Helicopter

ESBJERG

30 - 1

Esbjerg AFIS 120.15	Billund APP 127.575
------------------------	------------------------

TA 3000	AD Elev 97
---------	------------



SPEED: MAX 85kt.

MNM CLIMB GRADIENT: 11.6% to 2000.

SID	Routeing
PEGAM 2A	Climb on 079° - MNM 700 - turn right climbing to HP - 259° - PEGAM.
PEGAM 2B	Climb on 259° - MNM 700 - HP - 259° - PEGAM.

COM FAIL: In case of COM FAILURE maintain the last acknowledged ALT until TMA exit point, and then climb to assigned cruising level.

© Navitech - ekeb01daorg0

Reverse side blank

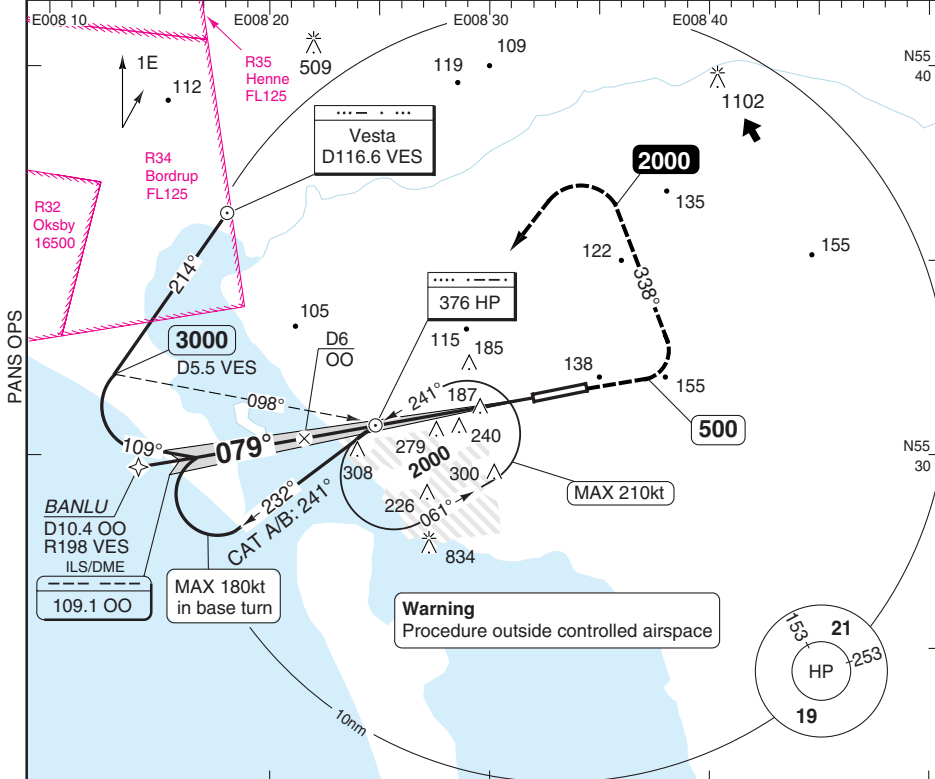
Change: New spec.

THIS CHART IS A PART OF NAVIGRAPH NDAC AND IS INTENDED FOR FLIGHT SIMULATION USE ONLY

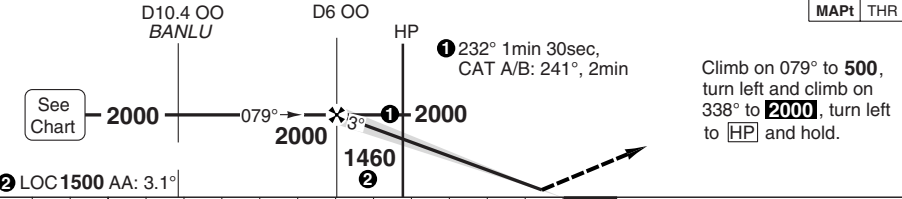
ILS RWY 08

Billund APP 127.575 Esbjerg AFIS 120.15

ILS/DME 109.1 OO FAT 079° THR Elev 78 AD Elev 97 TL ATC TA 3000



50 - 1



nm 14 13 12 11 10 9 8 7 6 5 4 3 2 1 0 TCH 49

ACFT	ILS+DME	LOC+DME	Circling
A			600 (510) 1.5km
B	280 (200)	380 (290)	600 (510) 1.6km
C	550m	750m	700 (610) 2.4km
D			900 (810) 3.6km

a North of RWY only.

DME OO	3.1° ALT	LDA 2599x45 8526x147ft P 3°
5.9	2000	
5	1710	
4	1380	
3	1050	
2	720	
1.0	380	

GS	80	100	120	140	160
ROD 3.1°	440	550	660	770	880

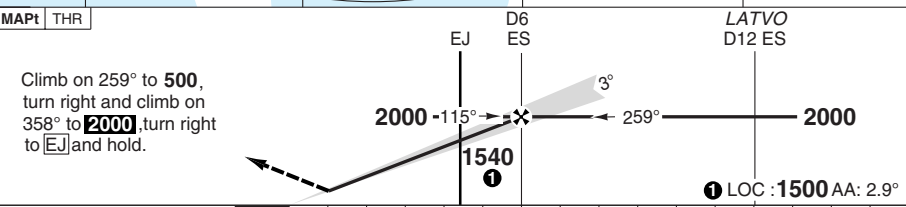
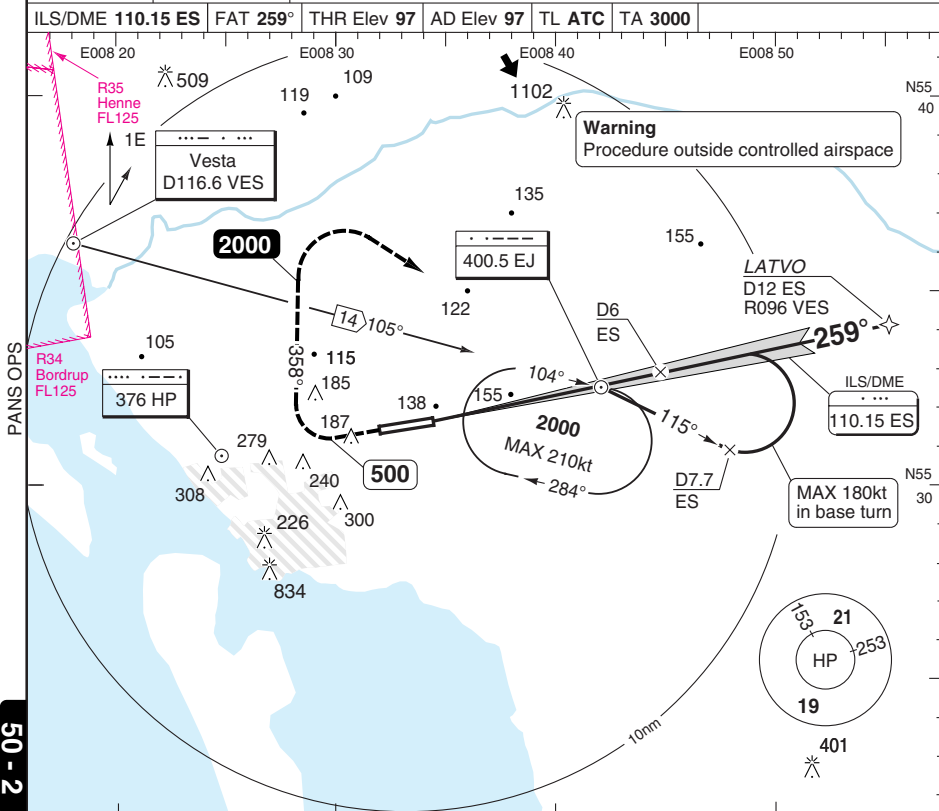
© Navtech - ekeb01iap00

FALS

ILS RWY 26 CAT C/D

ESBJERG

Billund APP 127.575	Esbjerg AFIS 120.15				
ILS/DME 110.15 ES	FAT 259°	THR Elev 97	AD Elev 97	TL ATC	TA 3000



TCH 51 0 1 2 3 4 5 6 7 8 9 10 11 12 13 14 15 nm

ACFT	ILS	LOC+DME	Circling
C	300 (200) 550m	410 (320) 750m	700 (610) 2.4km
D			900 (810) 3.6km

a North of RWY only.

DME	3.0°	LDA 2599x45
ES	ALT	8526x147ft
6	2000	P 3°
5	1690	
4	1370	
3	1050	
2	730	
1.0	410	

GS	80	100	120	140	160
ROD 3.0°	430	540	640	750	860

FALS

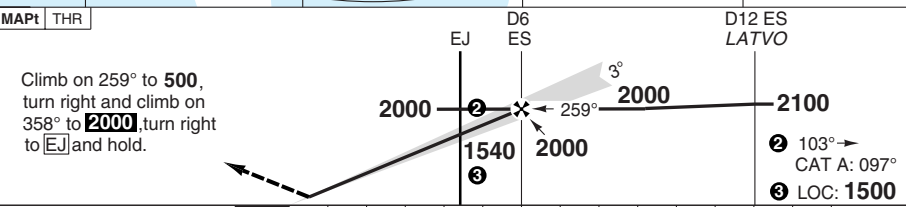
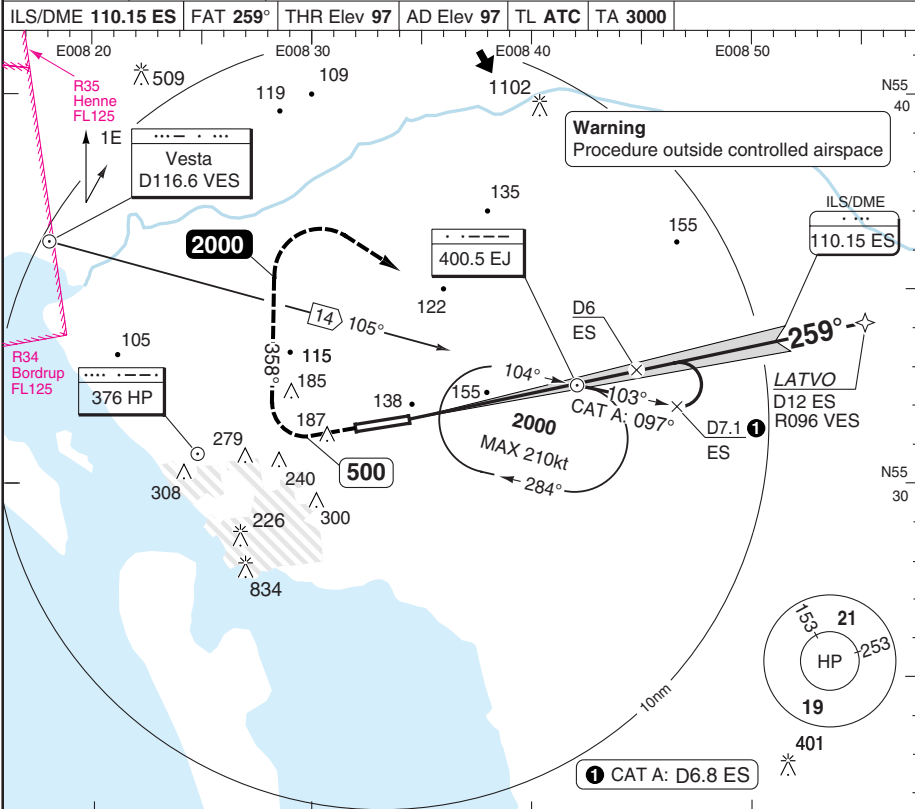
© Navtech - ekeb02taip00

Change: New

ILS RWY 26 CAT A/B

ESBJERG

Billund APP 127.575	Esbjerg AFIS 120.15				
ILS/DME 110.15 ES	FAT 259°	THR Elev 97	AD Elev 97	TL ATC	TA 3000



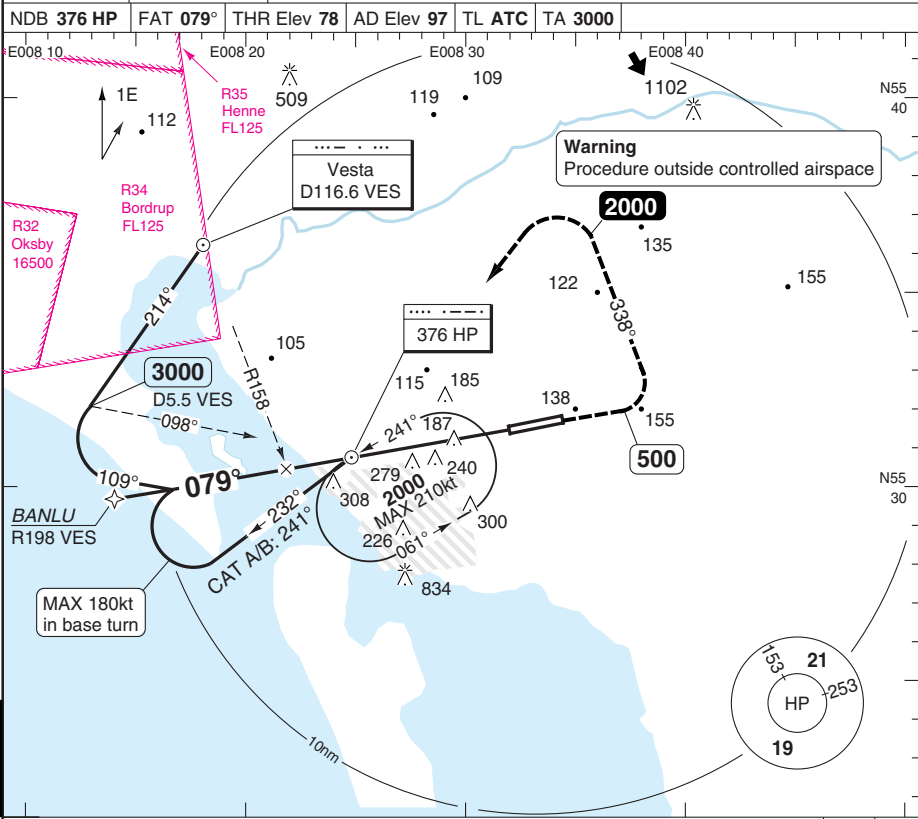
TCH 51	0	1	2	3	4	5	6	7	8	9	10	11	12	13	14nm
ACFT	ILS	LOC+DME	Circling	DME	3.0° ALT	LDA 2599x45 8526x147ft P 3°									
A	300 (200) 550m	410 (320) 750m	600 (510) 1.5km	6.3	2100										
B			600 (510) 1.6km	6	2010										
				5	1690										
				4	1370										
				3	1050										
				2	730										
				1.0	410										
GS	80	100	120	140	160	FALS									
ROD 3.0°	430	540	640	750	860										

Change: Renumbered, Spec update

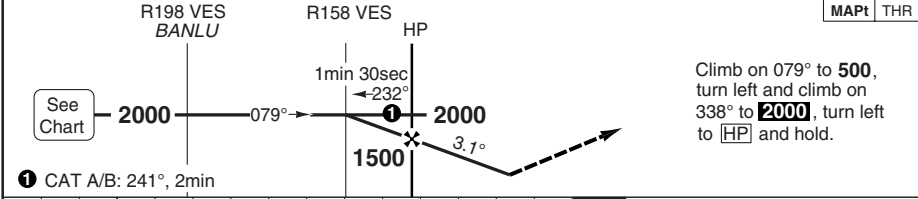
NDB RWY 08

ESBJERG

Billund APP 127.575	Esbjerg AFIS 120.15				
NDB 376 HP	FAT 079°	THR Elev 78	AD Elev 97	TL ATC	TA 3000



50 - 4



nm	14	13	12	11	10	9	8	7	6	5	4	3	2	1	0
ACFT	NDB		Circling												
A	600 (510)		600 (510) 1.5km												
B	1500m		600 (510) 1.6km												
C	600 (510)		700 (610) 2.4km												
D	1600m		900 (810) 3.6km ^a												
GS	80	100	120	140	160	LDA 2599x45 8526x147ft P 3°									
ROD 3.1°	440	550	660	770	880										
FAF +20s	1360	1330	1290	1260	1220										
+40s	1220	1150	1070	1000	930										
+60s	1070	960	850	740	640										
FAF- 600	2:04	1:39	1:23	1:11	1:02										
FAF-MAPt	3:09	2:31	2:06	1:48	1:34										

^a North of RWY only.

© Navtech - ekeb04iap00

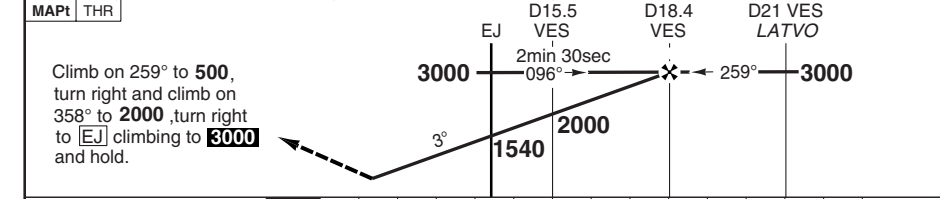
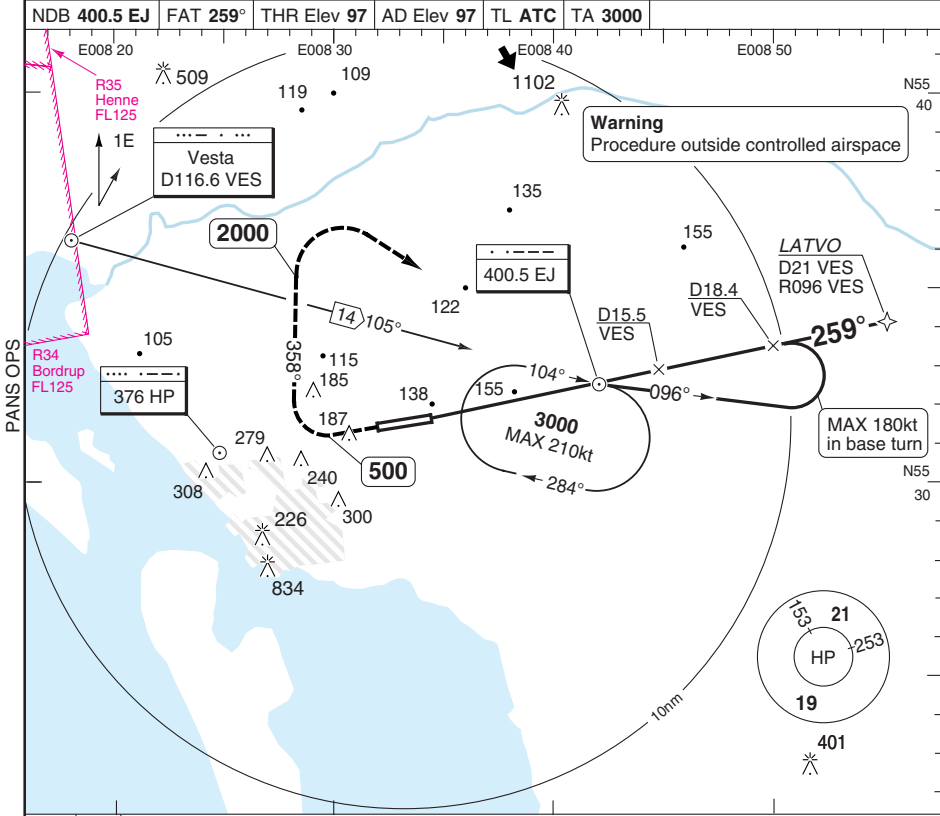
Change: Renumbered, Spec update

THIS CHART IS A PART OF NAVIGRAPH NDAC AND IS INTENDED FOR FLIGHT SIMULATION USE ONLY

NDB RWY 26 CAT C/D

ESBJERG

Billund APP 127.575	Esbjerg AFIS 120.15				
NDB 400.5 EJ	FAT 259°	THR Elev 97	AD Elev 97	TL ATC	TA 3000



Climb on 259° to 500, turn right to 358° to 2000, turn right to [EJ] climbing to 3000 and hold.

ACFT	NDB+DME	Circling
C	530 (440) 1300m	700 (610) 2.4km
D		900 (810) 3.6km ^a

^a North of RWY only.

	GS	80	100	120	140	160
ROD 3.0°	430	540	640	750	860	
EJ +20s	1400	1370	1330	1300	1260	
+40s	1260	1190	1120	1050	980	
+60s	1120	1010	910	800	690	
EJ-530	2:22	1:53	1:35	1:21	1:11	
EJ-MAPt	3:16	2:37	2:11	1:52	1:38	

LDA 2599x45
8526x147ft
P 3°

© Navtech - ekeb05iap00

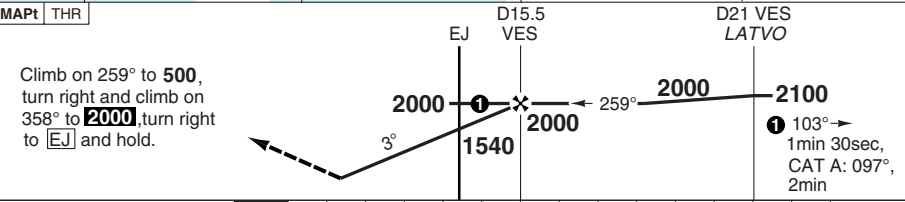
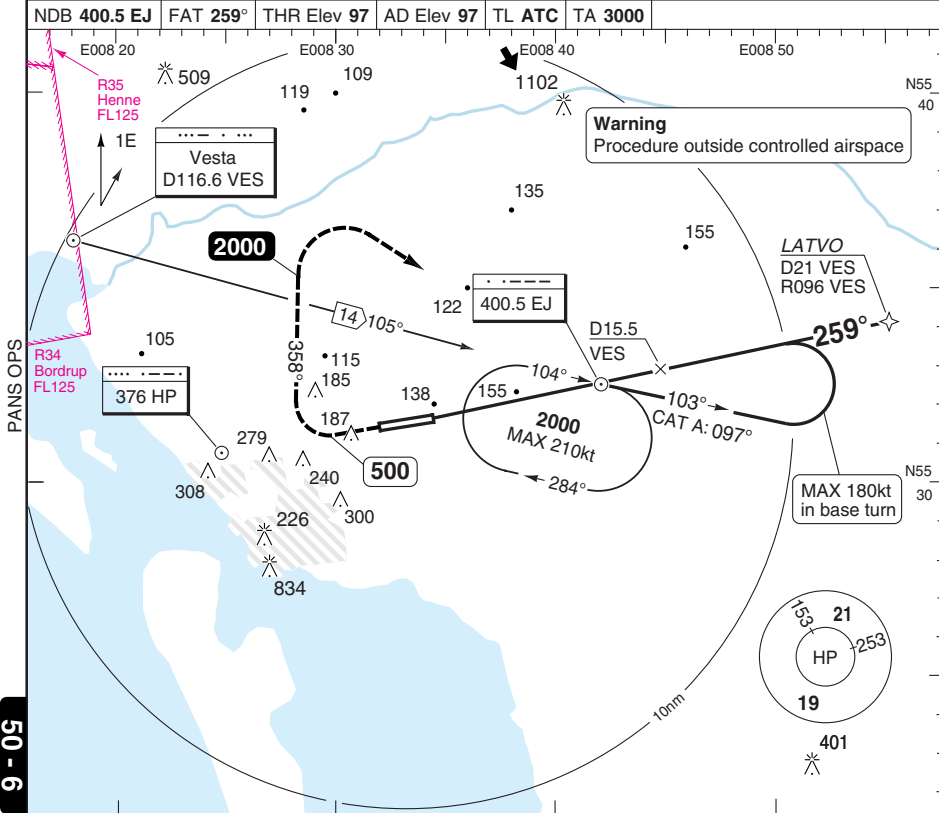
50 - 5

FALS

NDB RWY 26 CAT A/B

ESBJERG

Billund APP 127.575	Esbjerg AFIS 120.15				
NDB 400.5 EJ	FAT 259°	THR Elev 97	AD Elev 97	TL ATC	TA 3000



MAPt	THR						D15.5 VES	D21 VES LATVO	
Climb on 259° to 500, turn right and climb on 358° to 2000, turn right to EJ and hold.							2000	2100	
							1540	2000	
							3°	103°	
							1min 30sec,	CAT A: 097°,	
							2min		
							0	14nm	
ACFT	NDB+DME	Circling	GS	80	100	120	140	160	LDA 2599x45
A	530 (440) 1300m	600 (510) 1.5km	ROD 3.0°	430	540	640	750	860	8526x147ft
			EJ +20s	1400	1370	1330	1300	1260	P 3°
			+40s	1260	1190	1120	1050	980	
B		600 (510) 1.6km	+60s	1120	1010	910	800	690	
			EJ-530	2:22	1:53	1:35	1:21	1:11	
			EJ-MAPt	3:16	2:37	2:11	1:52	1:38	

© Navtech - ekeb06iaip00

EU OPS

FALS

Reverse side blank

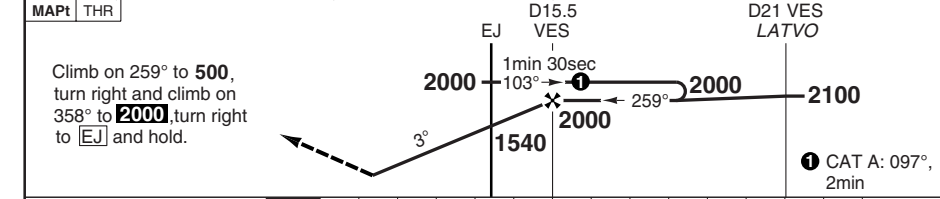
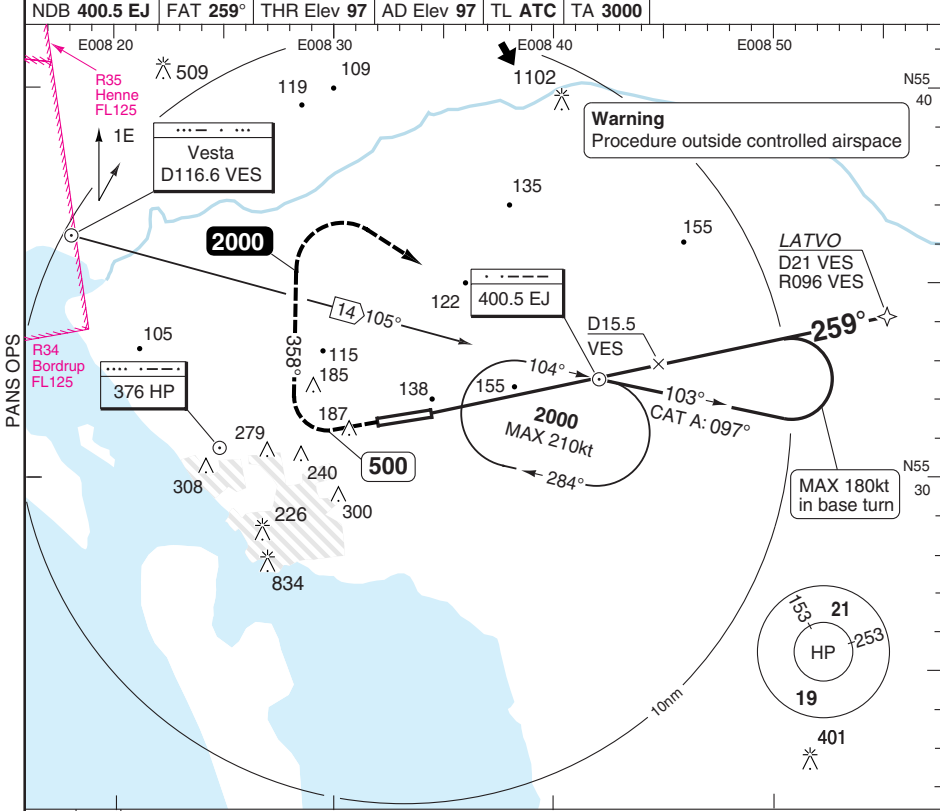
Change: Renumbered, Spec update

THIS CHART IS A PART OF NAVIGRAPH NDAC AND IS INTENDED FOR FLIGHT SIMULATION USE ONLY

NDB RWY 26 CAT A/B

ESBJERG

Billund APP 127.575	Esbjerg AFIS 120.15				
NDB 400.5 EJ	FAT 259°	THR Elev 97	AD Elev 97	TL ATC	TA 3000



Climb on 259° to 500, turn right and climb on 358° to 2000, turn right to [EJ] and hold.

① CAT A: 097°, 2min

ACFT	NDB+DME	Circling	GS	80	100	120	140	160	LDA 2599x45 8526x147ft P 3°
A	530 (440) 1300m	600 (510) 1.5km	ROD 3.0°	430	540	640	750	860	
EJ +20s			1400	1370	1330	1300	1260		
+40s		1260	1190	1120	1050	980			
+60s	1120	1010	910	800	690				
EJ- 530	2:22	1:53	1:35	1:21	1:11				
EJ-MAPt	3:16	2:37	2:11	1:52	1:38				

© Navitech - ekeb07iaip00

EJ OPS

50 - 7

FALS
Reverse side blank

Change: Renumbered

THIS CHART IS A PART OF NAVIGRAPH NDAC AND IS INTENDED FOR FLIGHT SIMULATION USE ONLY

JAR-OPS Landing Minima

ESBJERG

The following Minima is for Public Transport aircraft and conforms to JAR-OPS1 regulations.

STRAIGHT-IN APPROACH		C				D			
R/W	Procedure	DA/ MDA QNH ft	DH/ MDH QFE ft	RVR m	RVR No ALS m	DA/ MDA QNH ft	DH/ MDH QFE ft	RVR m	RVR No ALS m
08	ILS	280	200	550	1000	280	200	550	1000
08	LOC	370	290	800	1600	370	290	1200	1800
08	NDB (1)	610	510	1200	2000	610	510	1600	2000
26	ILS	300	200	550	1000	300	200	550	1000
26	LOC	420	320	1000	1800	420	320	1400	2000
26	NDB	540	440	1000	1800	540	440	1400	2000

Notes:

(1) Procedure based on aerodrome elevation.

CIRCLING		C			D		
R/W	Procedure	MDA QNH ft	MDH QFE ft	Vis m	MDA QNH ft	MDH QFE ft	Vis m
All procedures (1)		710	610	2400	910	810	3600

Notes:

(1) Cat D: North of RWY only.

TAKE-OFF		C		D	
Runway	Facilities	RVR	Vis	RVR	Vis
08/26	REDL and/or RCL	400	-	400	-
08/26	Nil (Day only)	500	-	500	-

Notes:

JAR-OPS Landing Minima

ESBJERG

The following Minima is for Public Transport aircraft and conforms to JAR-OPS1 regulations.

STRAIGHT-IN APPROACH		A				B			
R/W	Procedure	DA/ MDA QNH ft	DH/ MDH QFE ft	RVR m	RVR No ALS m	DA/ MDA QNH ft	DH/ MDH QFE ft	RVR m	RVR No ALS m
08	ILS	280	200	550	1000	280	200	550	1000
08	LOC	370	290	800	1500	370	290	800	1500
08	NDB (1)	610	510	1000	1500	610	510	1200	1500
26	ILS	300	200	550	1000	300	200	550	1000
26	LOC	420	320	900	1500	420	320	1000	1500
26	NDB	540	440	900	1500	540	440	1000	1500

Notes:

(1) Procedure based on aerodrome elevation.

CIRCLING		A			B		
R/W	Procedure	MDA QNH ft	MDH QFE ft	Vis m	MDA QNH ft	MDH QFE ft	Vis m
All procedures (1)		610	510	1500	610	510	1600

Notes:

(1) Cat D: North of RWY only.

TAKE-OFF		A		B	
Runway	Facilities	RVR	Vis	RVR	Vis
08/26	REDL and/or RCL	400	-	400	-
08/26	Nil (Day only)	500	-	500	-

Notes:

HELICOPTER

ESBJERG

The following Minima is for Public Transport Helicopters and conforms to JAR-OPS3 regulations.

STRAIGHT-IN APPROACH

R/W	Procedure	DA/ MDA QNH ft	DH/ MDH QFE ft	Full >=720 RVR m	Inter 420-719 RVR m	Basic < 420 RVR m	No ALS RVR m
08	ILS	280	200	500	600	700	1000
08	LOC	370	290	600	800	1000	1000
08	NDB (1)	610	510	1000	1000	1000	1000
26	ILS	300	200	500	600	700	1000
26	LOC	420	320	800	1000	1000	1000
26	NDB	540	440	800	1000	1000	1000

Notes:

(1) Procedure based on aerodrome elevation.

CIRCLING

R/W	Procedures	MDA QNH ft	MDH QFE ft	Vis m
All procedures		610	510	800