

Airport information:

Country: Ireland

City: WATERFORD

Coordinates: N 52° 11.2', W 007° 05.2'

Elevation: 119

Customs: PN 24 HR

Fuel: 100LL, Jet A1

RFF: CAT 2. CAT 6 avbl PN 24 HR

hours: ATS: MON-WED,FRI ,SUN 0715-2230, THU 0700-2230, SAT 0730-2045

Runways:

Runway 03

Takeoff length: 1433, Landing length: 1343

Runway 21

Takeoff length: 1433, Landing length: 1290

AERODROME

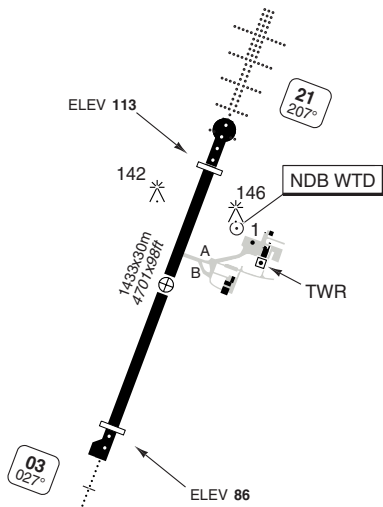
Waterford GND 121.6	TWR 129.85	AFIS 129.85	ATIS 121.15
------------------------	---------------	----------------	----------------

AD Elev 119 | ARP: N52 11.2 W007 05.2 | RFF: CAT 2. CAT 6 AVBL PN 24h | AD HR: 1



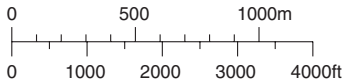
THR Coordinates

RWY 03	N52 10.9	W007 05.4
RWY 21	N52 11.5	W007 05.0



Parking position coordinates

1 N52 11.4 W007 04.9



RWY	Slope	TORA m/ft	LDA m/ft	ALS	REDL	Additional
03	+0.7	1433 / 4701	1343 / 4406	H-E 2	H 4	P 3° (26)
21	-0.7	1433 / 4701	1290 / 4232	H-C 3	H 4	P 3.25° (26)

2 300m. 3 705m. 4 Last 300m amber.

1 0715-2230, other PN 24h.

EU OPS

TAKE OFF MINIMA

RWY	Facilities	RVR
		A B
03/21	RCL (day only) or RCL + REDL	400m
	NIL (day only)	500m

AERODROME

10 - 2

GENERAL INFORMATION

1. TWY RESTRICTION

TWY A, B width 15m/49ft.

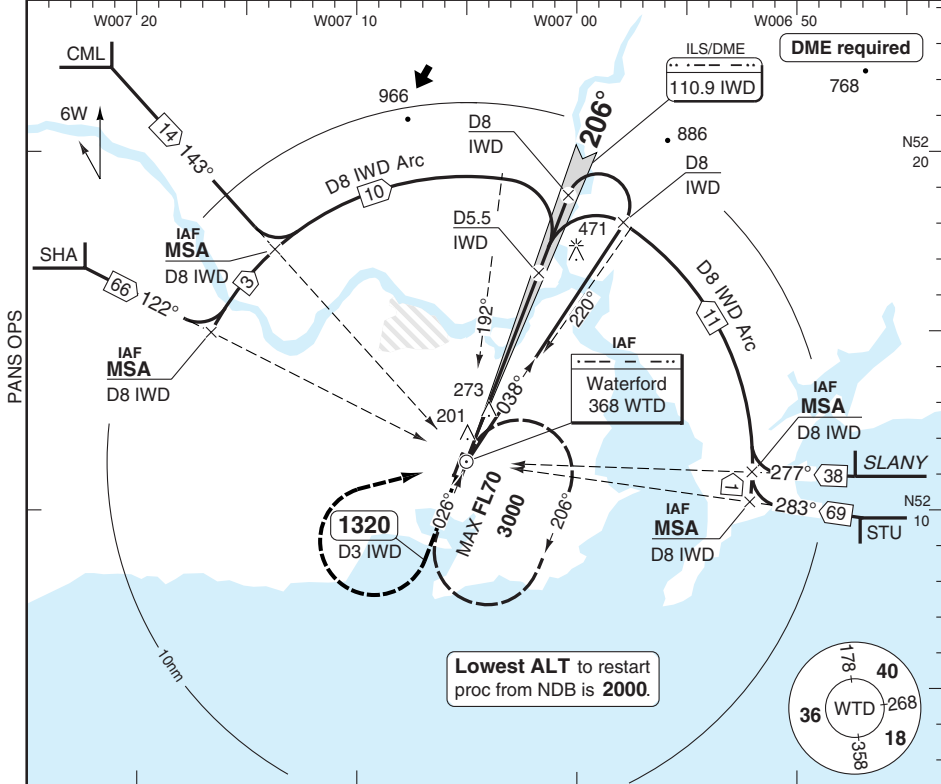
2. WARNING

Wind shear may be experienced under certain conditions on APCH to RWY 21.

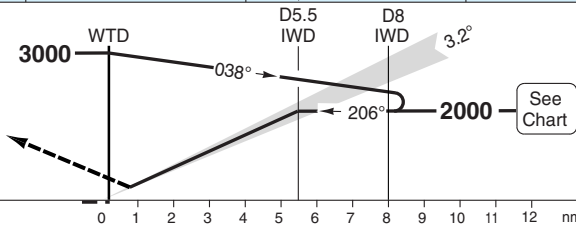
ILS RWY 21

Shannon APP 124.7	Waterford TWR 129.85	AFIS 129.85	GND 121.6	ATIS 121.15
-----------------------------	--------------------------------	-----------------------	---------------------	-----------------------

ILS/DME 110.9 IWD	FAT 206°	DTHR Elev 113	AD Elev 119	TL ATC	TA 5000
--------------------------	-----------------	----------------------	--------------------	---------------	----------------



Climb on 206°.
At 1320 or D3 IWD
whichever is later,
turn right to WTD
climbing to 2000.



TCH 45

ACFT	ILS+DME+NDB	Circling
A	320 (200) 750m	590 (471) 1.5km
B		690 (571) 1.6km

LDA 1290x30
4232x98ft
P 3.25° (26)



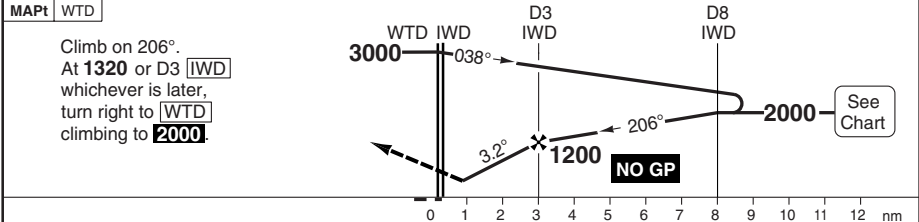
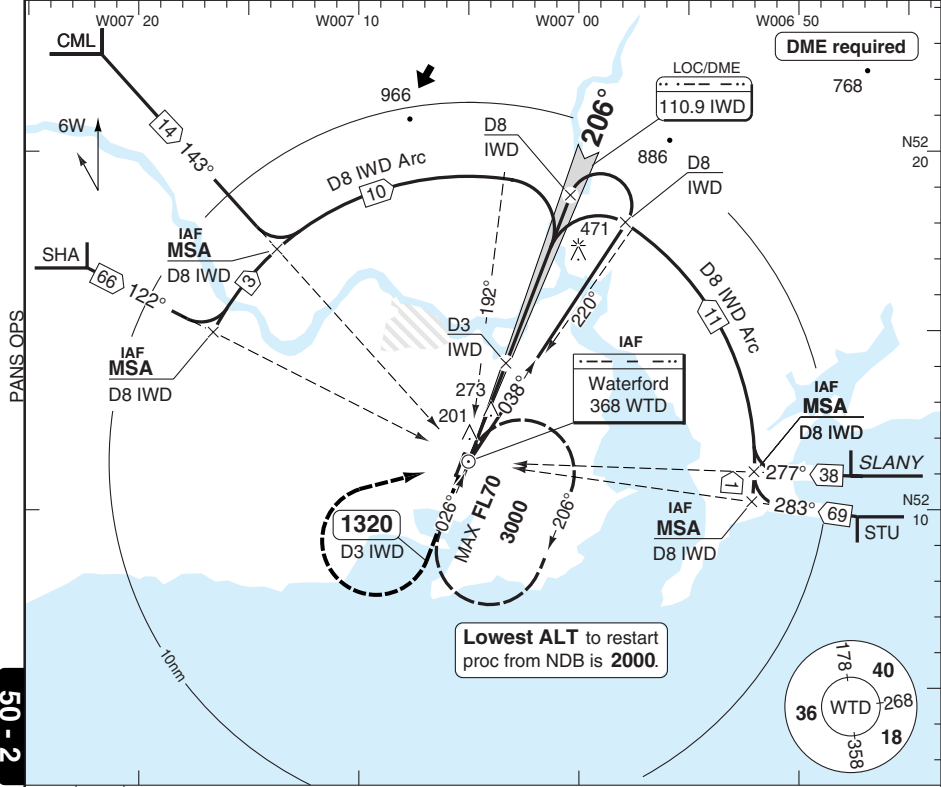
IALS

705

LOC OR NDB RWY 21

Shannon APP 124.7	Waterford TWR 129.85	AFIS 129.85	GND 121.6	ATIS 121.15
----------------------	-------------------------	----------------	--------------	----------------

LOC/DME 110.9 IWD	FAT 206°	DTHR Elev 113	AD Elev 119	TL ATC	TA 5000
-------------------	----------	---------------	-------------	--------	---------



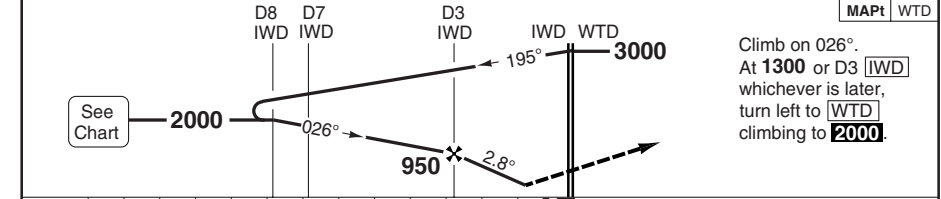
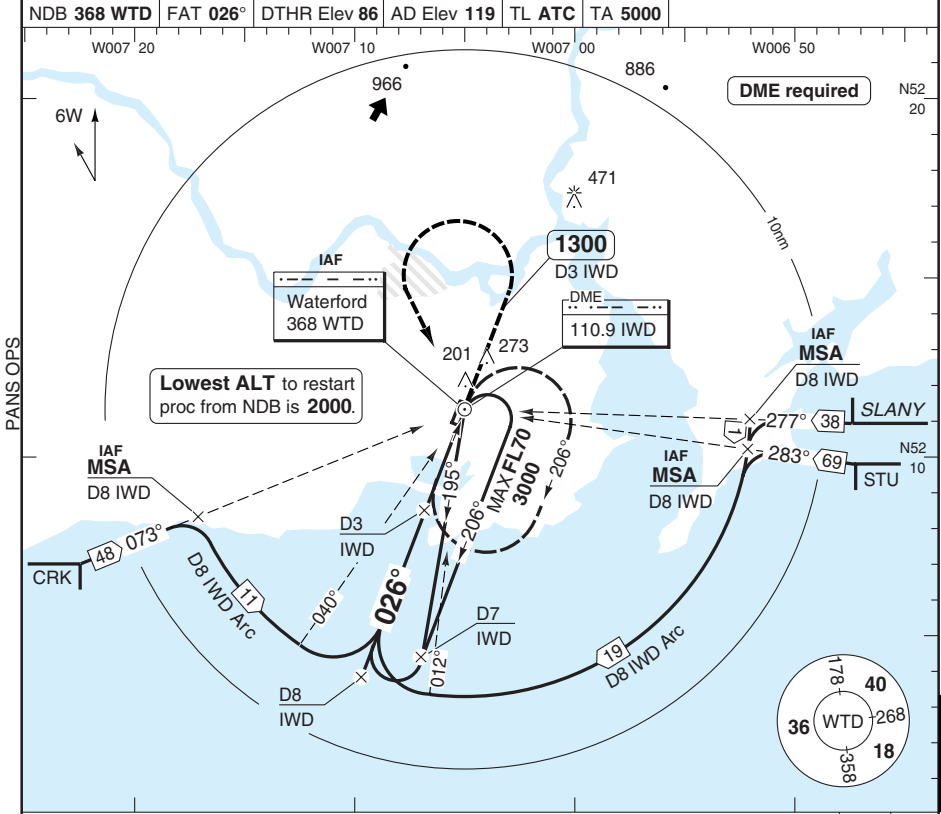
ACFT	LOC+DME+NDB	NDB+DME	Circling	DME IWD	3.3° ALT	LDA 1290x30 4232x98ft P 3.25° (26)
A	520 (407) 1500m	520 (407) 1500m	590 (471) 1.5km	5.3	2000	<p>705</p>
B			690 (571) 1.6km	5	1900	
				4	1550	
				3	1200	
				2	860	
				1.0	520	
GS	80	100	120	140	160	
ROD 3.3°	470	580	700	810	930	

© Navtech - eiwf02iaip00
EU OPS

Change: Minima.

NDB RWY 03

Shannon APP 124.7	Waterford TWR 129.85	AFIS 129.85	GND 121.6	ATIS 121.15	
NDB 368 WTD	FAT 026°	DTHR Elev 86	AD Elev 119	TL ATC	TA 5000



nm	13	12	11	10	9	8	7	6	5	4	3	2	1	0
ACFT	NDB+DME		Circling											
A	450 (364) 1500m		590 (471) 1.5km											
B			690 (571) 1.6km											
GS	80	100	120	140	160									
ROD 2.8°	410	510	610	710	810									
DME IWD	2.8° ALT	LDA 1343x30 4406x98ft P 3° (26)												
6.5	2000													
6	1860													
5	1560													
4	1260													
3	950													
2	650	BASIC												
1.3	450	Reverse side blank												

© Navtech - eiwf03iaip00
EU OPS

50 - 3

JAR-OPS Landing Minima

WATERFORD

The following Minima is for Public Transport aircraft and conforms to JAR-OPS1 regulations.

STRAIGHT-IN APPROACH		C				D			
R/W	Procedure	DA/ MDA QNH ft	DH/ MDH QFE ft	RVR m	RVR No ALS m	DA/ MDA QNH ft	DH/ MDH QFE ft	RVR m	RVR No ALS m
03	NDB/DME	N/A	N/A	N/A	N/A	N/A	N/A	N/A	N/A
21	ILS/DME	N/A	N/A	N/A	N/A	N/A	N/A	N/A	N/A
21	LOC/DME	N/A	N/A	N/A	N/A	N/A	N/A	N/A	N/A
21	NDB/DME	N/A	N/A	N/A	N/A	N/A	N/A	N/A	N/A

Notes:

CIRCLING		C			D		
R/W	Procedure	MDA QNH ft	MDH QFE ft	Vis m	MDA QNH ft	MDH QFE ft	Vis m
All procs		N/A	N/A	N/A	N/A	N/A	N/A

Notes:

TAKE-OFF		C		D	
Runway	Facilities	RVR	Vis	RVR	Vis
03/21	REDL and/or RCL	N/A	N/A	N/A	N/A
03/21	Nil (Day only)	N/A	N/A	N/A	N/A

Notes:

JAR-OPS Landing Minima

WATERFORD

The following Minima is for Public Transport aircraft and conforms to JAR-OPS1 regulations.

STRAIGHT-IN APPROACH		A				B			
R/W	Procedure	DA/ MDA QNH ft	DH/ MDH QFE ft	RVR m	RVR No ALS m	DA/ MDA QNH ft	DH/ MDH QFE ft	RVR m	RVR No ALS m
03	NDB/DME	450	370	1300	1500	450	370	1400	1500
21	ILS/DME	320	200	700	1000	320	200	700	1000
21	LOC/DME	520	410	1200	1500	520	410	1300	1500
21	NDB/DME	520	410	1200	1500	520	410	1300	1500

Notes:

CIRCLING		A			B		
R/W	Procedure	MDA QNH ft	MDH QFE ft	Vis m	MDA QNH ft	MDH QFE ft	Vis m
All procs		590	480	1500	690	580	1600

Notes:

TAKE-OFF		A		B	
Runway	Facilities	RVR	Vis	RVR	Vis
03/21	REDL and/or RCL	400	-	400	-
03/21	Nil (Day only)	500	-	500	-

Notes:

HELICOPTER

WATERFORD

The following Minima is for Public Transport Helicopters and conforms to JAR-OPS3 regulations.

STRAIGHT-IN APPROACH

R/W	Procedure	DA/ MDA QNH ft	DH/ MDH QFE ft	Full >=720 RVR m	Inter 420-719 RVR m	Basic < 420 RVR m	No ALS RVR m
03	NDB/DME	450	370	N/A	N/A	1000	1000
21	ILS/DME	320	200	N/A	600	700	1000
21	LOC/DME	520	410	N/A	1000	1000	1000
21	NDB/DME	520	410	N/A	1000	1000	1000

Notes:

CIRCLING

R/W	Procedures	MDA QNH ft	MDH QFE ft	Vis m
All procs		590	480	800

Notes: