

Airport information:

Country: Ireland

City: SHANNON

Coordinates: N 52° 42.1', W 008° 55.5'

Elevation: 46

Customs: Customs

Fuel: 100LL, Jet A1

RFF: CAT 9

hours: H24

Runways:

Runway 06

Takeoff length: 3199, Landing length: 3199

Runway 13

Takeoff length: 1720, Landing length: 1720

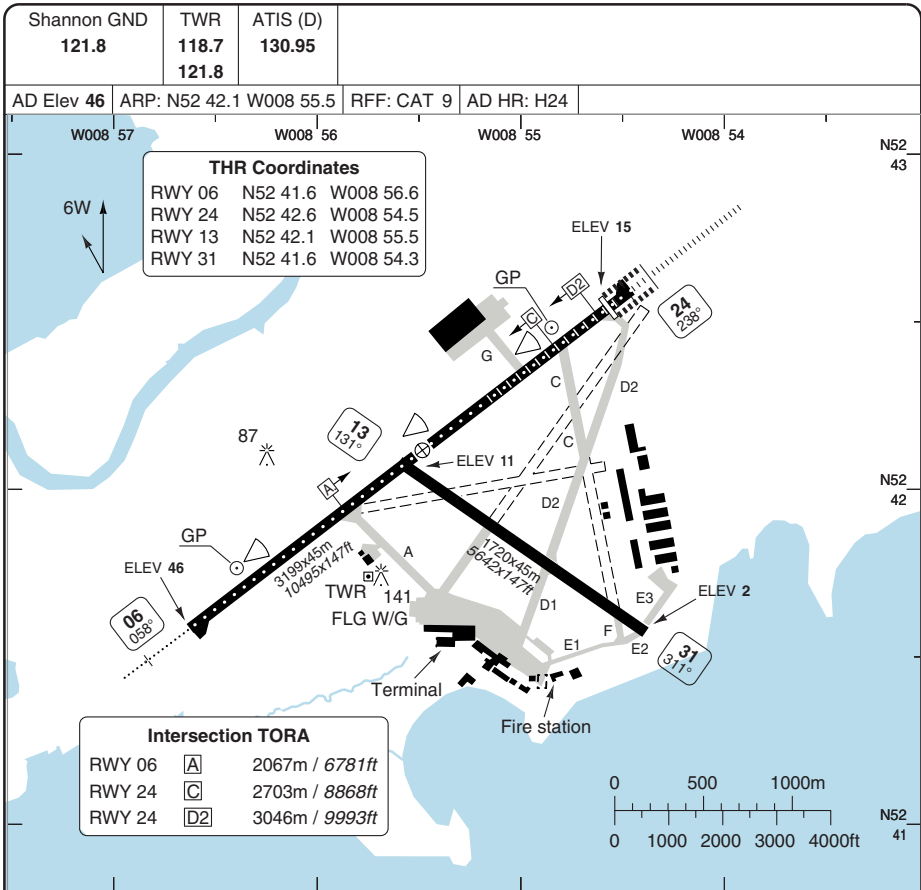
Runway 24

Takeoff length: 3199, Landing length: 3059

Runway 31

Takeoff length: 1720, Landing length: 1720

AERODROME



RWY	Slope	TORA m/ft	LDA m/ft	ALS	REDL	RCLL	Additional
06	-0.3	3199 / 10495	3199 / 10495	H-E ①	H	15m	P 3° L/R (68)
24	+0.3	3199 / 10495	3059 / 10036	H-B	H	15m	P 3° L/R (74)
13	-0.2	1720 / 5643	1720 / 5643	-	-	-	-
31	+0.2	1720 / 5643	1720 / 5643	-	-	-	P 3° L/R (66)

① 470m.

EU OPS TAKE OFF MINIMA

RWY	Facilities	RVR			
		A	B	C	D
06/24	HRCLL + HREDL + Multiple RVR	Ap.O	LVP	125m	150m
	RCLL + REDL + Multiple RVR		LVP	150m	200m
	RCLL + REDL		LVP	200m	250m
	RCL (day only) or RCL + REDL		LVP	250m	300m
	RCL (day only) or RCL + REDL			400m	400m
	NIL (day only)			500m	500m

© Navitech - einn01laorg0

Change: Twy C.

THIS CHART IS A PART OF NAVIGRAPH NDAC AND IS INTENDED FOR FLIGHT SIMULATION USE ONLY

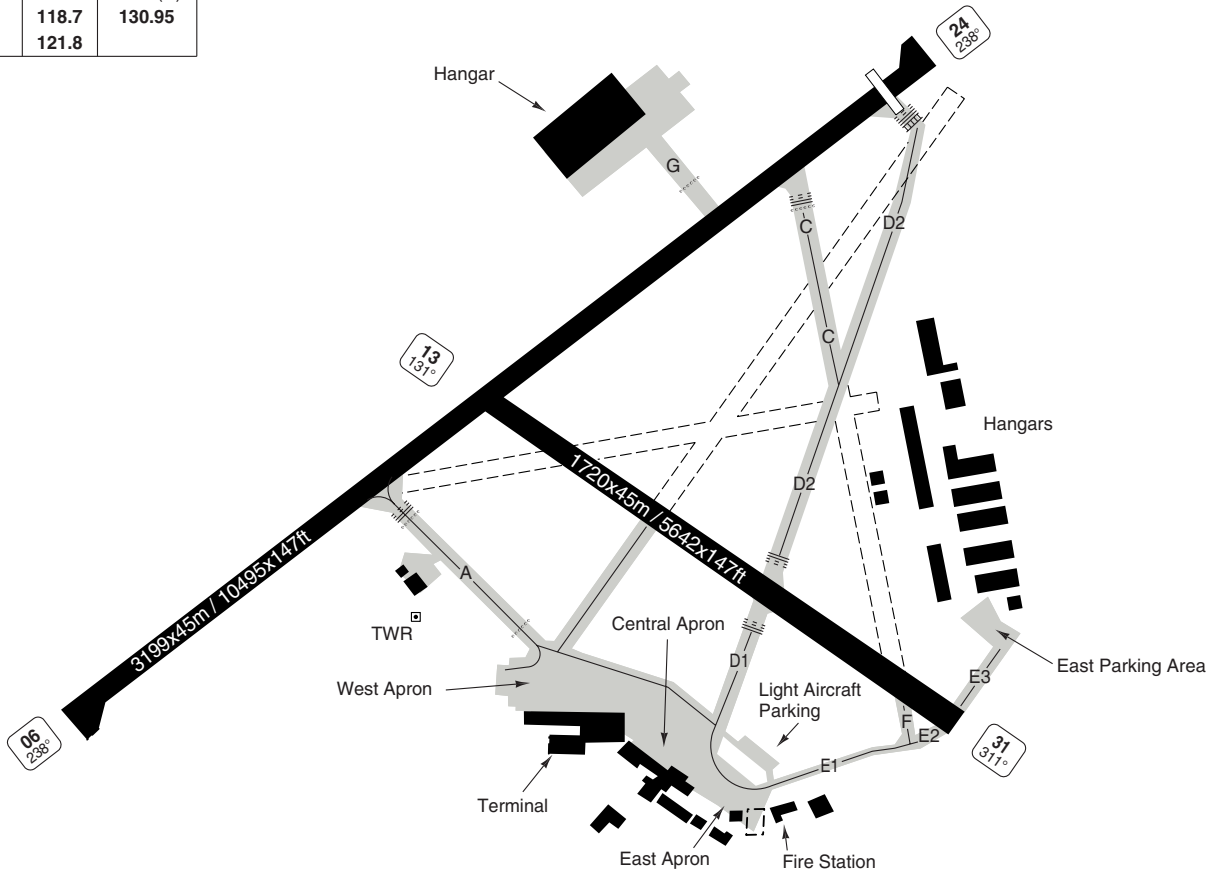
10 - 2 | 30 JUL 09

Ireland - EINN / SNN

AERODROME Overview

SHANNON

Shannon GND 121.8	TWR 118.7 121.8	ATIS (D) 130.95
----------------------	-----------------------	--------------------



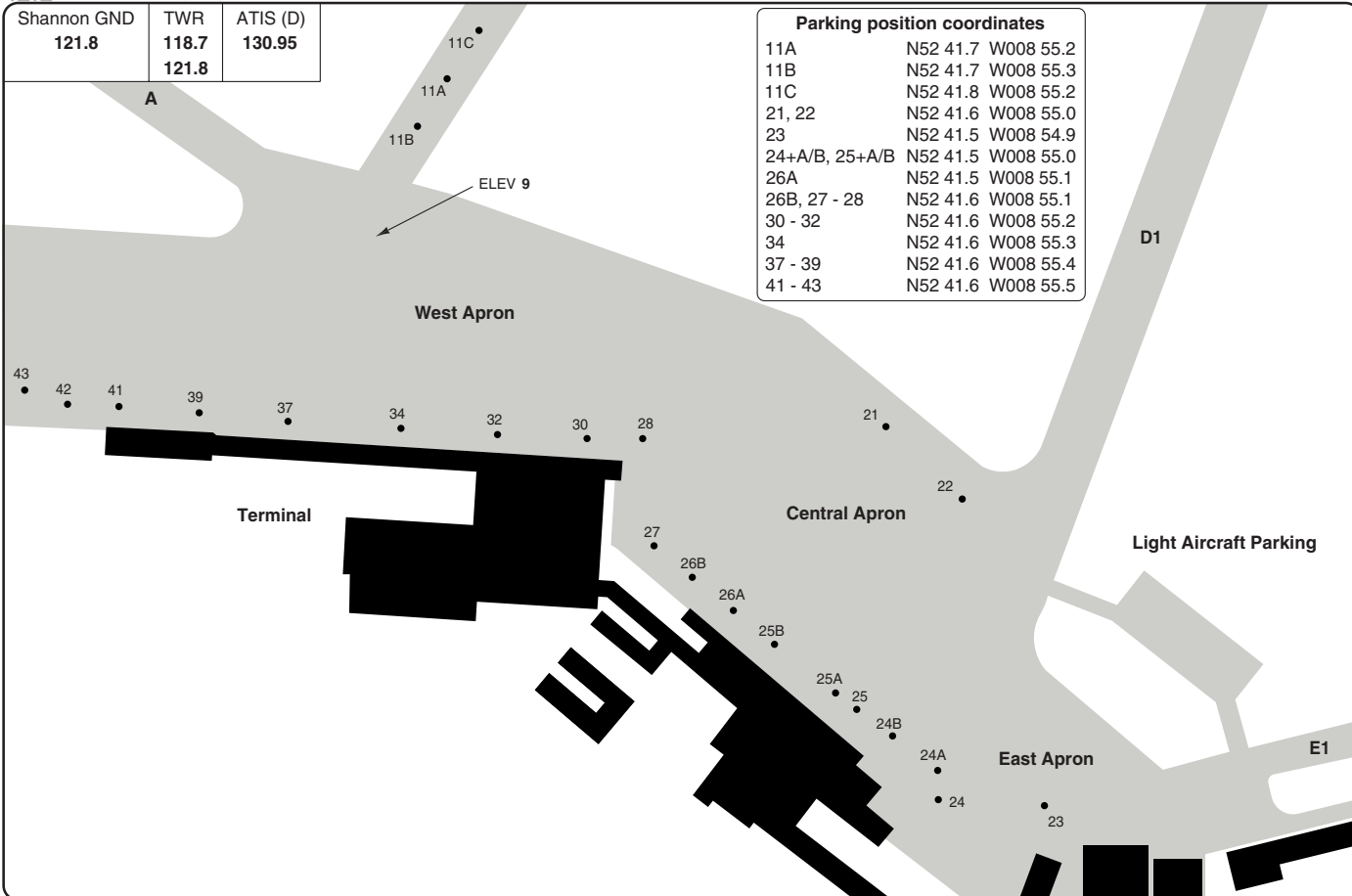
© Navtech - einn02iaor0d

Change: New chart.

THIS CHART IS A PART OF NAVIGRAPH NDAC AND IS INTENDED FOR FLIGHT SIMULATION USE ONLY

Shannon GND	TWR	ATIS (D)
121.8	118.7	130.95
	121.8	

Parking position coordinates	
11A	N52 41.7 W008 55.2
11B	N52 41.7 W008 55.3
11C	N52 41.8 W008 55.2
21, 22	N52 41.6 W008 55.0
23	N52 41.5 W008 54.9
24+A/B, 25+A/B	N52 41.5 W008 55.0
26A	N52 41.5 W008 55.1
26B, 27 - 28	N52 41.6 W008 55.1
30 - 32	N52 41.6 W008 55.2
34	N52 41.6 W008 55.3
37 - 39	N52 41.6 W008 55.4
41 - 43	N52 41.6 W008 55.5



GROUND

10 - 3 | 30 JUL 09

Ireland - EINN / SNN
SHANNON

THIS CHART IS A PART OF NAVIGRAPH NDAC AND IS INTENDED FOR FLIGHT SIMULATION USE ONLY

Change: Re-indexed

GENERAL

SHANNON

GENERAL

1. SPEED

- 1.1 MAX 250kt below FL100.
- 1.2 Initial approach segment: MAX 210kt.
Recommended 160kt from FAF to OM.

2. LOW VISIBILITY PROCEDURES

- 2.1 CAT II holding position on Taxiway D2 must be used.
- 2.2 Following standard taxi route system applies when LVP are in operation:
- Departing Aircraft shall normally use Taxiway D1 and D2.
 - Arrival aircraft shall normally use Taxiway A.

3. TAXI

Wide-bodied aircraft only permitted to execute 180° turns at runway ends on Runway 06/24.

4. TAXIWAY RESTRICTION

Taxiway E1 for aircraft with wingspan less than 36m/118ft.
Taxiway E2 width 14m/45ft.

5. RUNWAY RESTRICTION

Runway 13/31: Runway surface not according to ICAO recommendations. At pilot's discretion, runway may be used by aircraft not exceeding 2500 KG by day only and when VIS is more than 2000m.

6. WARNING

Turbulence and/or windshear may be experienced on approach to Runway 24 when wind direct from sector 260°T - 320°T with wind speeds over 15kt.

7. PARKING

AGNIS available on stands 28, 30, 32, 34 and 37.

8. OCEANIC CLEARANCE REQUEST

Contact Shannon Area Control Centre 45min before ETD on 121.7 to request Oceanic clearance. Contact 121.7 at least 15min before start-up to obtain clearance.

9. OMNIDIRECTIONAL DEPARTURE PROCEDURE

CAT C/D

Runway 06: MNM CLIMB GRADIENT: 9.1%
Climb straight ahead until passing 2000ft.

Runway 24: MNM CLIMB GRADIENT: 9.1%
Climb straight ahead until passing 1800ft.

CAT B

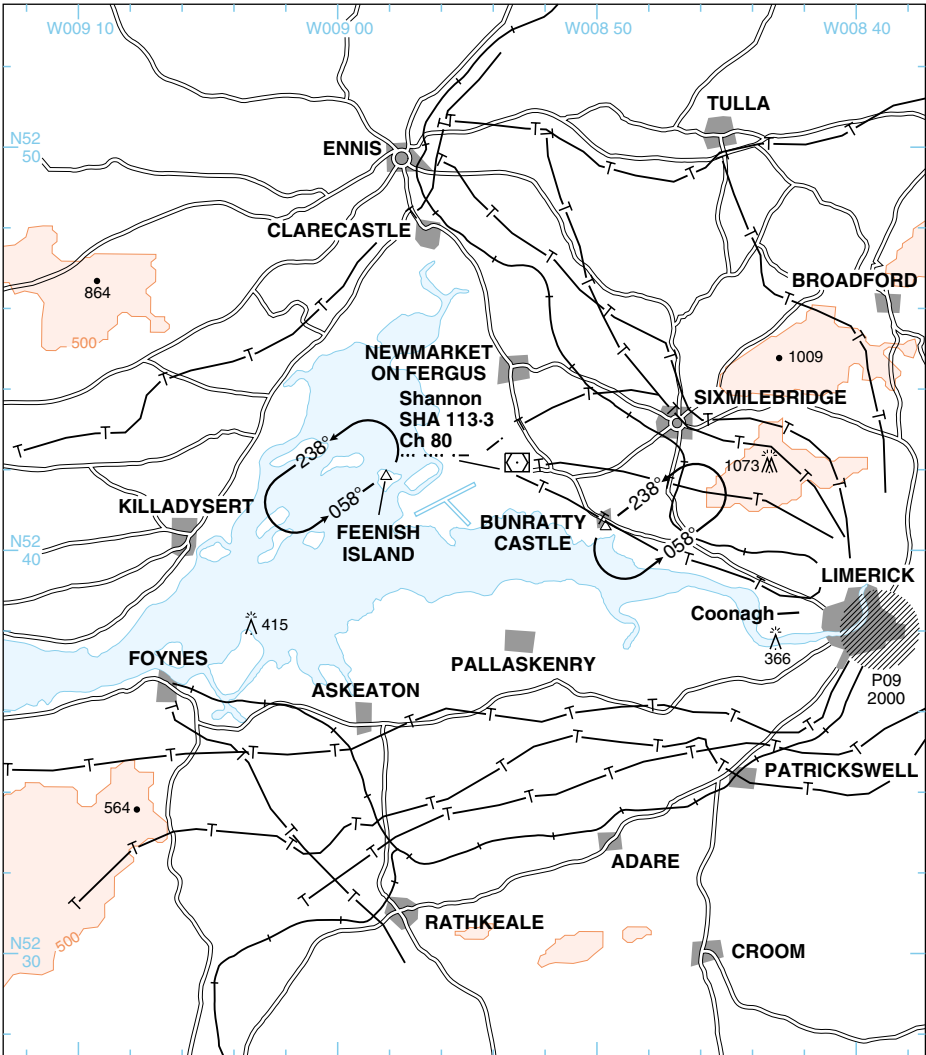
MNM CLIMB GRADIENT: 4.5%
Climb straight ahead until passing 500ft.

VISUAL

SHANNON

Shannon GND 121.8	TWR 121.4	ATIS (D) 130.95
-----------------------------	---------------------	---------------------------

AD Elev 46	TLATC	TA 5000
------------	-------	---------



1. CAUTION. Turbulence/windshear possible on approach to Rwy 24 when wind above 15kt in sector 260°–320°T.
2. Holds are for VFR light acft and based on 120kt TAS.
3. Acft without radio. Acft from West hold at FEENISH ISLAND, acft from East hold at BUNRATTY CASTLE and await signals from ATC.
4. Chart area is within SHANNON CTR, GND – 2500; except for VFR Coonagh traffic:
 - a. Area within 1.5nm of Coonagh AD; surface – 1000.
 - b. Area between 045°T – 180°T from Coonagh AD to intersect with boundary of SHANNON CTR; surface 1000.

© Navtech EAG - eidw01uaorg0

Reverse side blank

WEF 03 JUN 10

30 - 1 | 05 MAY 10

Ireland - EINN / SNN

SID RWY 06 **RNAV** West

SHANNON

Shannon GND 121.8	TWR 118.7 121.8	APP 121.4 120.2	ATIS (D) 130.95
----------------------	-----------------------	-----------------------	--------------------

TA 5000 AD Elev 46

MOMIN
R328/D29.9 SHA
N53 06.8
W009 23.6

ERABI
R311/D30.5 SHA
N53 00.9
W009 34.1

UNBEG
R285/D31.2 SHA
N52 48.3
W009 43.8

UNBE2A
UNBEG 2A

GULTU
R292/D19.1 SHA
N52 48.6
W009 23.3

SHA VOR/DME
required

NEPOG
MNM 3400
R357/D5.7 SHA
N52 48.9
W008 54.4

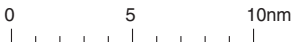
Shannon
D113.3 SHA

N52 43.3
W008 53.1

MNM 2000

Shannon
339 OL

N52 44.9
W008 49.4



MNM CLIMB GRADIENT: 9.1%.

ALT RESTRICTIONS: Climb to **5000**.

Cross OL MNM 2000, NEPOG MNM 3400.

SID

Routeing

(INITIAL CLIMB)

Climb on 058° - OL - turn left - NEPOG - follow SID.

ERABI 2A

302° - ERABI.

MOMIN 2A

321° - MOMIN.

UNBEG 2A

274° - GULTU - UNBEG.

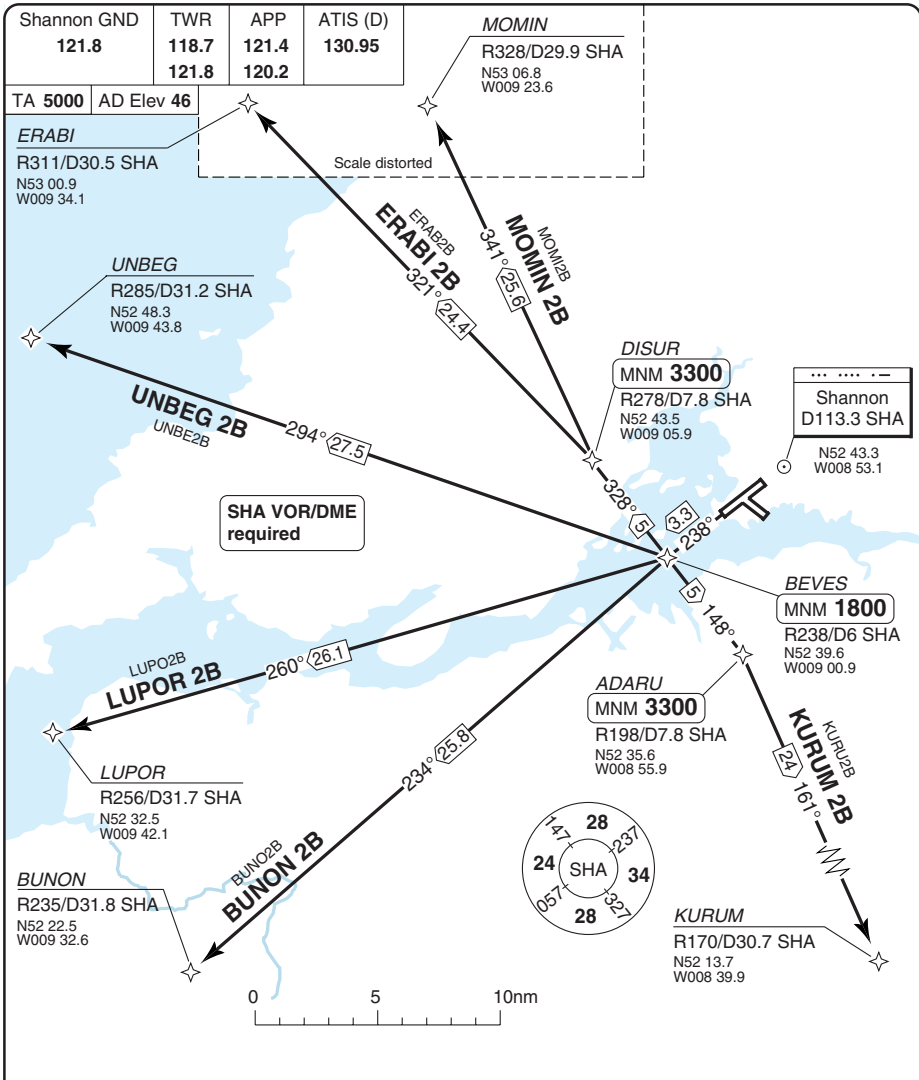
© Navtech - eimn01daorg0

Change: SIDs redesignated, DOLIP 1A and GIPER removed.

THIS CHART IS A PART OF NAVIGRAPH NDAC AND IS INTENDED FOR FLIGHT SIMULATION USE ONLY

SID RWY 24 **RNAV** Southeast, West, Northwest

SHANNON



MNM CLIMB GRADIENT: 9.1%.
ALT RESTRICTIONS: Climb to **5000**.

SID	Routeing	Altitudes
(INITIAL CLIMB)	Climb on 238° to BEVES/D6 SHA - follow SID.	BEVES/D6 SHA MNM 1800
BUNON 2B	234° - BUNON.	
ERABI 2B	328° - DISUR - ERABI.	DISUR MNM 3300
KURUM 2B	148° - ADARU - KURUM.	ADARU MNM 3300
LUPOR 2B	260° - LUPOR.	
MOMIN 2B	328° - DISUR - MOMIN.	DISUR MNM 3300
UNBEG 2B	294° - UNBEG.	

© Navitech - einn03daorgo

Change: SID designators.

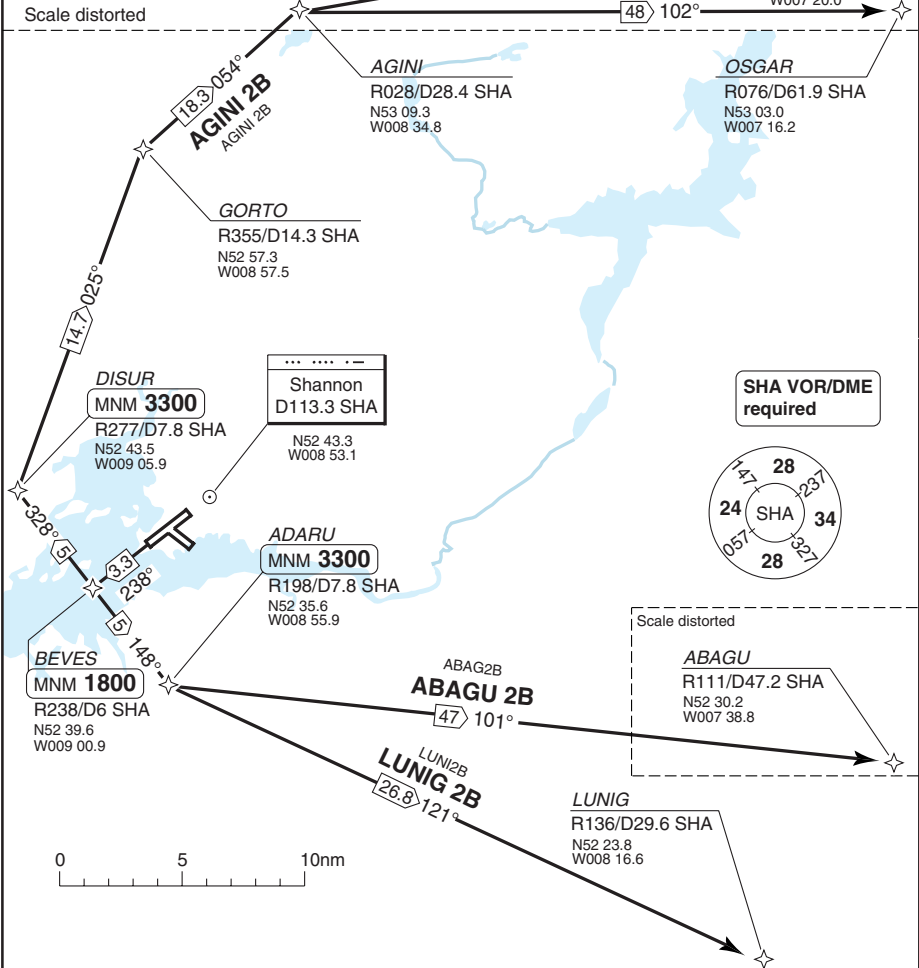
THIS CHART IS A PART OF NAVIGRAPH NDAC AND IS INTENDED FOR FLIGHT SIMULATION USE ONLY

SID RWY 24 **RNAV** Northeast, East

SHANNON

Shannon GND 121.8	TWR 118.7 121.8	APP 121.4 120.2	ATIS (D) 130.95
----------------------	-----------------------	-----------------------	--------------------

TA 5000 AD Elev 46



MNM CLIMB GRADIENT: 9.1%.

ALT RESTRICTIONS: Climb to **5000**.

SID	Routeing	Altitudes
(INITIAL CLIMB)	Climb on 238° to BEVES/D6 SHA - follow SID.	BEVES/D6 SHA MNM 1800
ABAGU 2B	148° - ADARU - ABAGU.	ADARU MNM 3300
AGINI 2B	328° - DISUR - GORTO - AGINI	DISUR MNM 3300
LUNIG 2B	148° - ADARU - LUNIG.	ADARU MNM 3300
OSGAR 2B	328° - DISUR - GORTO - AGINI - OSGAR.	DISUR MNM 3300
PELIG 2B	328° - DISUR - GORTO - AGINI - PELIG.	DISUR MNM 3300

Change: SIDs redesignated, AGINI 2B added.

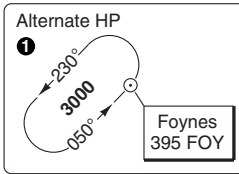
THIS CHART IS A PART OF NAVIGRAPH NDAC AND IS INTENDED FOR FLIGHT SIMULATION USE ONLY

STAR RWY 06 RNAV SOUTH

Shannon APP	TWR	GND	ATIS (D)
121.4	118.7	121.8	130.95
120.2	121.8		

SHA VOR/DME required

TL ATC AD Elev 46



UNBEG
 MNM **FL80**
 R311/D30.5 SHA
 N52 48.3
 W009 43.8

UNBE2E
 UNBEG 2E
 23.6° 134°

LUPOR
 MNM **FL80**
 R256/D31.7 SHA
 N52 32.5
 W009 42.1

LUPO2E
 LUPOR 2E
 17.5° 092°

D20
 SHA

238°
 3000
 MAX FL 140
 058°

1
 Foynes 395 FOY
 N52 34.0
 W009 11.7

Shannon
 D113.3 SHA
 N52 43.3
 W008 53.1

TIPUR
 MNM **FL80**
 R111/D28.9 SHA
 N52 35.4
 W008 07.5

16.2° 052°
 BUNON 2E
 BUNO2E

BUNON
 MNM **FL80**
 R235/D31.8 SHA
 N52 22.5
 W009 32.6

ELPOM
 MAX 220kt
 MNM **3000**
 R238/D15.7 SHA
 N52 33.6
 W009 13.4

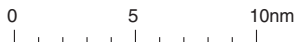
TIPU2E
 TIPUR 2E
 264° 37

RERKA
 MNM **6000**
 R214/D17.2 SHA
 N52 28.1
 W009 06.4

TIPU2E
 KURUM 2E
 317° 21.7

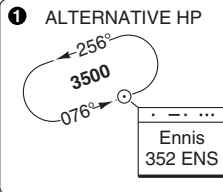
KURUM
 MNM **FL80**
 R170/D30.7 SHA
 N52 13.7
 W008 39.9

Scale distorted



Shannon APP	TWR	GND	ATIS (D)
121.4	118.7	121.8	130.95
120.2	121.8		

TL ATC AD Elev 46



MOMIN
 MNM **FL80**
 R328/D29.9 SHA
 N53 06.8
 W009 23.6

ERABI
 MNM **FL80**
 R312/D30.5 SHA
 N53 00.9
 W009 34.1

SHA VOR/DME required

UNBEG
 MNM **FL80**
 R285/D31.2 SHA
 N52 48.3
 W009 43.8

LUPOR
 MNM **FL80**
 R256/D31.7 SHA
 N52 32.5
 W009 42.1

BUNON
 MNM **FL80**
 R235/D31.8 SHA
 N52 22.5
 W009 32.6



TOBRI
 MNM **6000**
 R031/D15.6 SHA
 N52 57.3
 W008 41.8

Ennis
 352 ENS
 N52 54.3
 W008 55.7

MAX 220kt
 MAX FL140
 3000

DERAG
 MAX 220kt
 MNM **3000**
 R058/D14 SHA
 N52 51.8
 W008 34.8

Shannon
 D113.3 SHA
 N52 43.3
 W008 53.1

KURUM
 MNM **FL80**
 R170/D30.7 SHA
 N52 13.7
 W008 39.9

AGINI
 MNM **FL80**
 R028/D28.4 SHA
 N53 09.3
 W008 34.8

OGONO
 MNM **6000**
 R058/D20 SHA
 N52 55.4
 W008 27.0

D19 SHA

GILOG
 MNM **6000**
 R085/D17.1 SHA
 N52 46.2
 W008 25.4

RIKUL
 MNM **FL80**
 R049/D28.2 SHA
 N53 03.5
 W008 20.8

DIGA2D

DIGAN
 MNM **FL80**
 R068/D28.2 SHA
 N52 56.2
 W008 11.9

TIPUR
 MNM **FL80**
 R111/D28.9 SHA
 N52 35.4
 W008 07.5

Scale distorted

THIS CHART IS A NAVIGRAPH NDAC AND IS INTENDED FOR FLIGHT SIMULATION USE ONLY

Change: STARs revised, AGINI 2E added.

STAR RWY 24 ENAV

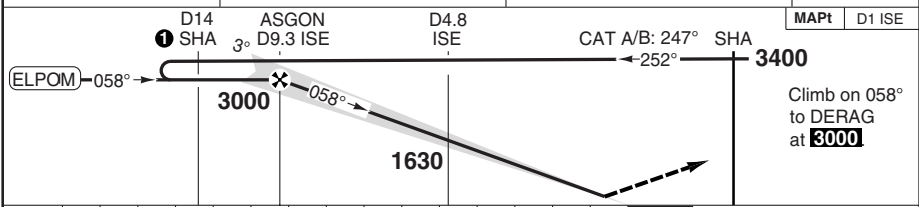
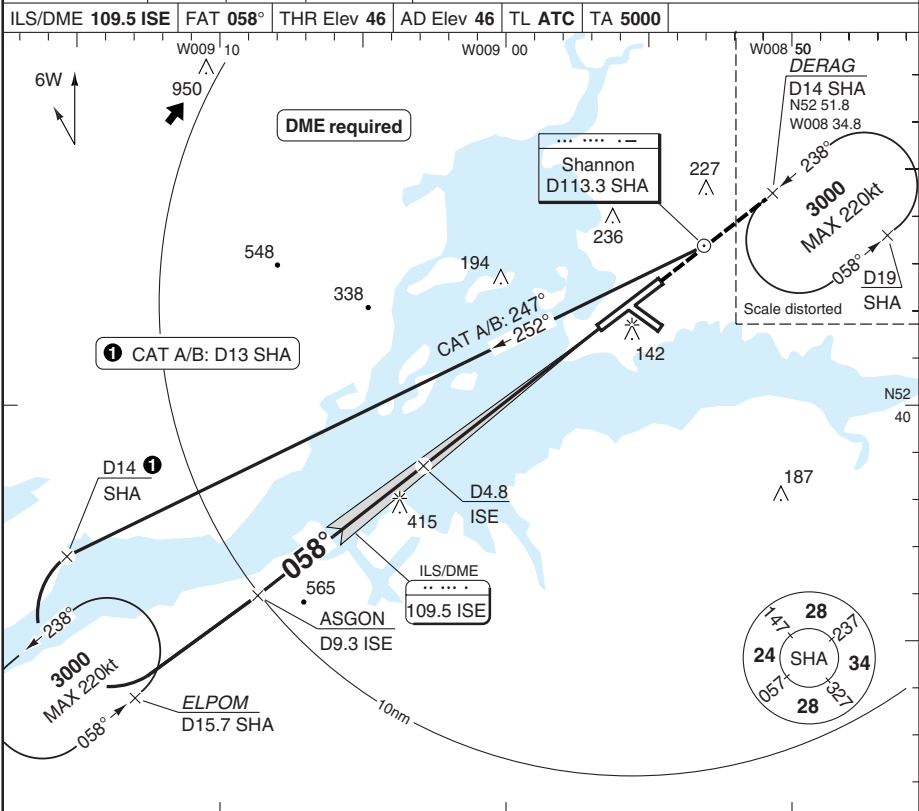
40 - 3 05 MAY 10

Ireland - EINN / SHANNON

ILS RWY 06

SHANNON

Shannon APP 121.4 120.2	TWR 118.7 121.8	GND 121.8	ATIS (D) 130.95
ILS/DME 109.5 ISE	FAT 058°	THR Elev 46	AD Elev 46
TL ATC	TA 5000		



nm 15 14 13 12 11 10 9 8 7 6 5 4 3 2 1 0 TCH 55

ACFT	ILS+DME	LOC+DME	Circling			ⓐ CAT A: 500 (454) 1.5km	DME ISE	3.0° ALT	LDA 3199x45 10495x147ft P 3° L/R (68)
A/B	250 (200) 750m	350 (304) 1000m	550 (500) 1.6km	ⓐ		8	2650	IALS	
C			720 (674) 2.4km			7	2330		
D			800 (754) 3.6km			6	2010		
						5	1690		
GS	80	100	120	140	160	4	1370		
ROD 3.0°	430	530	640	750	850	3	1050		
						2	740		
						1	420		470

© Navtech - einn01iaip00

Change: ELPOM added, MISAP, SSA, minima.

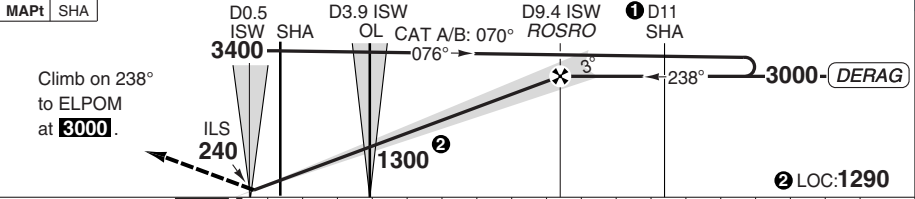
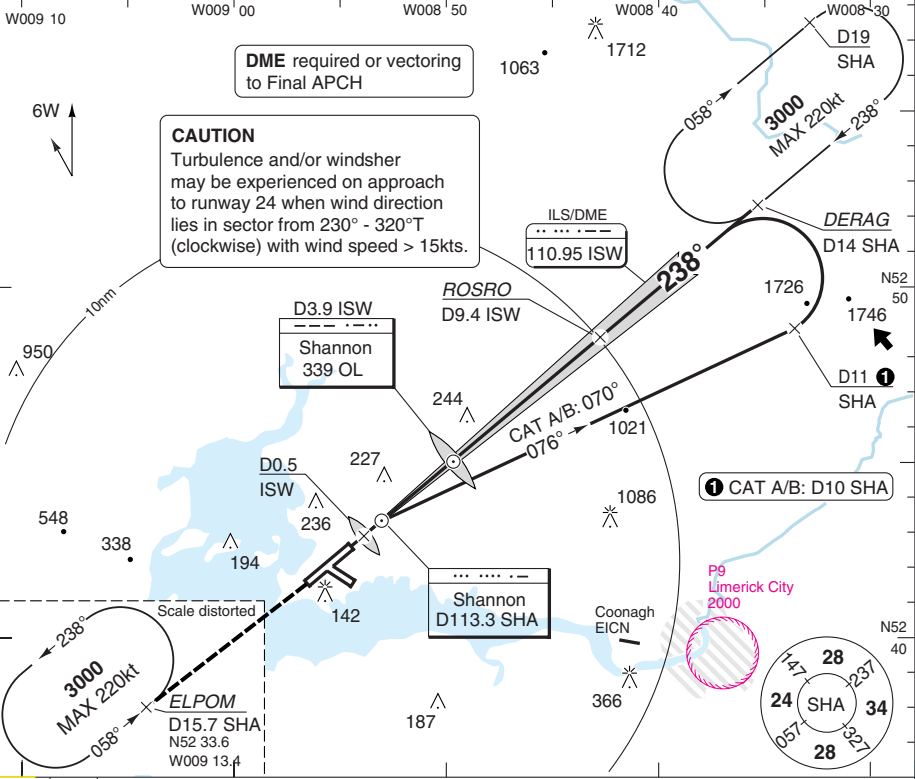
THIS CHART IS A PART OF NAVIGRAPH NDAC AND IS INTENDED FOR FLIGHT SIMULATION USE ONLY

ILS RWY 24

SHANNON

Shannon APP 121.4 120.2	TWR 118.7 121.8	GND 121.8	ATIS (D) 130.95
-------------------------------	-----------------------	--------------	--------------------

ILS/DME 110.95 ISW	FAT 238°	DTHR Elev 15	AD Elev 46	TL ATC	TA 5000
--------------------	----------	--------------	------------	--------	---------



TCH 59	0	1	2	3	4	5	6	7	8	9	10	11	12	13	14	15	16	17	18	nm
--------	---	---	---	---	---	---	---	---	---	---	----	----	----	----	----	----	----	----	----	----

ACFT	CAT II	ILS+DME	LOC+DME	Circling	CAT A: 500 (454) 1.5km	DME ISW	3.0° ALT	LDA 3059x45 10036x147ft P 3° L/R (74)
A/B				550 (500) 1.6km		9	2940	
C	99 300m	220 (200) 550m	460 (445) 1400m	720 (674) 2.4km		8	2620	
D				800 (754) 3.6km		7	2310	
						6	1990	
						5	1670	
						4	1350	
						3	1030	
						2	710	
GS	80	100	120	140	160			
ROD 3.0°	430	530	640	750	850			

© Navtech - eimn02iaip00

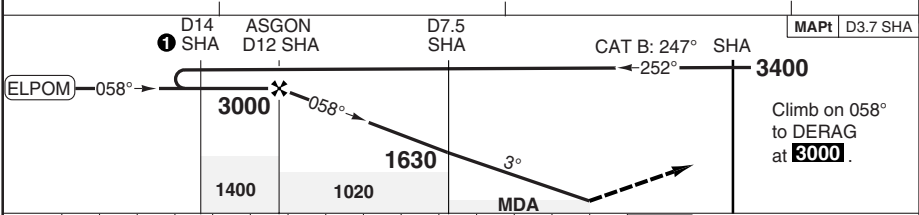
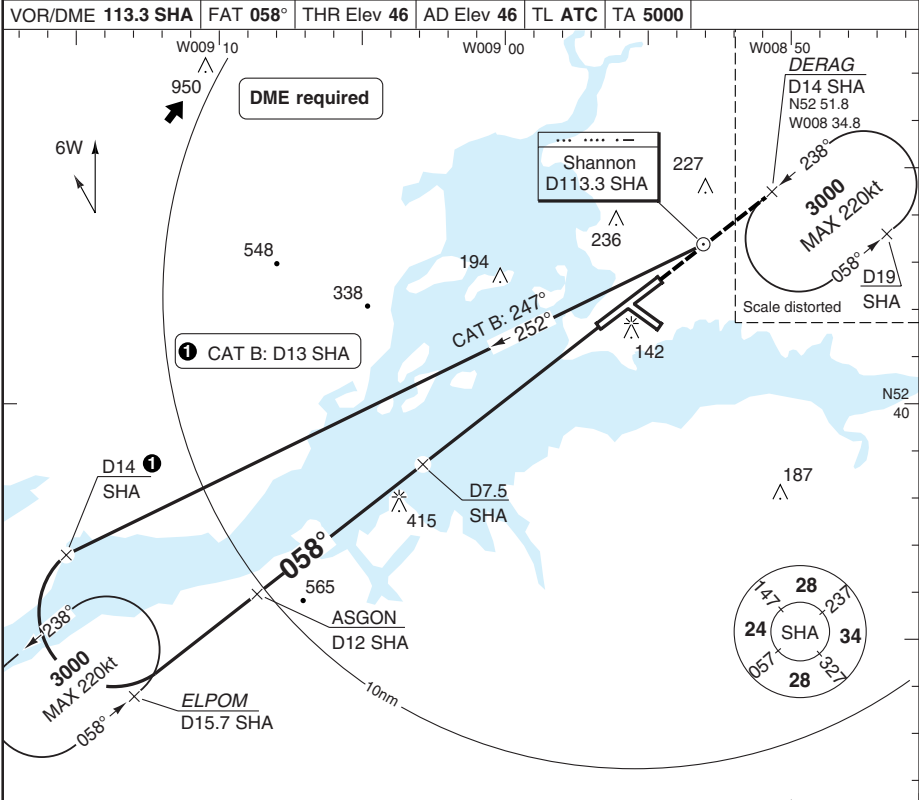
Change: SSA, minima, base turn, MISAP, note.

THIS CHART IS A PART OF NAVIGRAPH NDAC AND IS INTENDED FOR FLIGHT SIMULATION USE ONLY

VOR RWY 06

SHANNON

Shannon APP 121.4 120.2	TWR 118.7 121.8	GND 121.8	ATIS (D) 130.95	
VOR/DME 113.3 SHA	FAT 058°	THR Elev 46	AD Elev 46	TL ATC TA 5000



nm	15	14	13	12	11	10	9	8	7	6	5	4	3	2	1	0
ACFT	VOR+DME		Circling		a CAT A: 500 (454) 1.5km											
B			550 (500) 1.6km a													
C	360 (314) 1000m		720 (674) 2.4km													
D			800 (754) 3.6km													
GS	100	120	140	160												
ROD 3.0°	530	630	730	840												
					DME SHA	3.0° ALT	LDA 3199x45 10495x147ft P 3° (67)									
					11	2740	INTERMEDIATE 470									
					10	2420										
					9	2100										
					8	1780										
					7	1460										
					6	1150										
					5	830										
					4	510										

© Navitech - einn03iatp00

Change: ELPOM added, MISAP, SSA, minima.

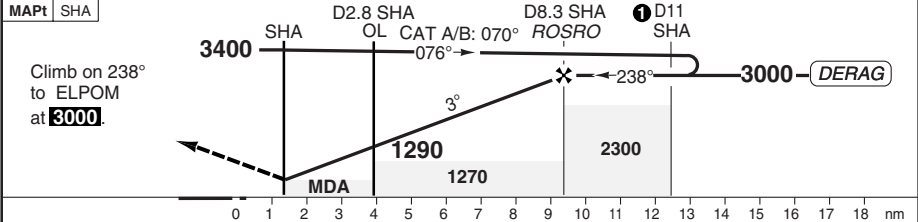
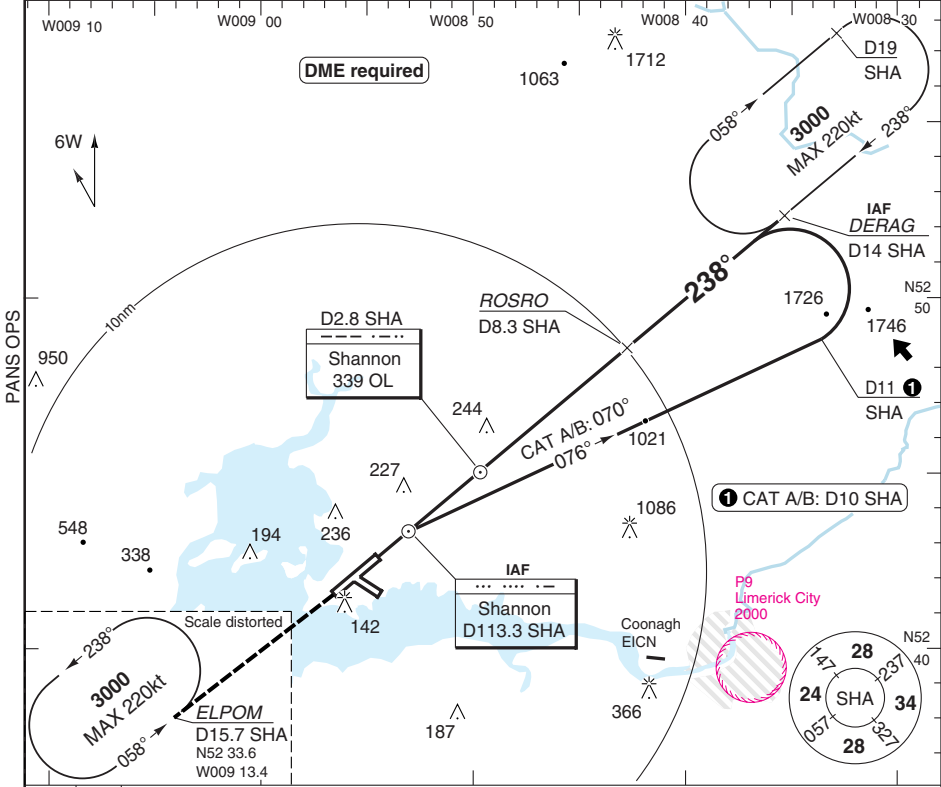
THIS CHART IS A PART OF NAVIGRAPH NDAC AND IS INTENDED FOR FLIGHT SIMULATION USE ONLY

VOR RWY 24

SHANNON

Shannon APP 121.4 120.2	TWR 118.7 121.8	GND 121.8	ATIS (D) 130.95
-------------------------------	-----------------------	--------------	--------------------

VOR/DME 113.3 SHA	FAT 238°	DTHR Elev 15	AD Elev 46	TL ATC	TA 5000
-------------------	----------	--------------	------------	--------	---------



ACFT	VOR+DME	Circling	a CAT A: 500 (454) 1.5km					DME SHA	3.0° ALT	LDA 3059x45 10036x147ft P 3° L/R (74)
A/B	460 (445) 1400m	550 (500) 1.6km						8	2950	
C		720 (674) 2.4km						7	2630	
D		800 (754) 3.6km						6	2310	
									5	
GS	80	100	120	140	160		4	1680		
ROD 3.0°	430	530	640	750	850		3	1360		
							2	1040		
							1	720		

© Navtech - eimn04iaip00

Change: ELPOM added, profile, minima, SSA, MISAP.

THIS CHART IS A PART OF NAVIGRAPH NDAC AND IS INTENDED FOR FLIGHT SIMULATION USE ONLY

JAR-OPS Landing Minima

SHANNON

The following Minima is for Public Transport aircraft and conforms to JAR-OPS1 regulations.

STRAIGHT-IN APPROACH		C				D			
R/W	Procedure	DA/ MDA QNH ft	DH/ MDH QFE ft	RVR m	RVR No ALS m	DA/ MDA QNH ft	DH/ MDH QFE ft	RVR m	RVR No ALS m
06	ILS/DME	250	200	700	1000	250	200	700	1000
06	LOC/DME	350	310	1400	1800	350	310	1600	2000
06	VOR/DME	360	320	1400	1800	360	320	1600	2000
24	ILS	220	200	550	1000	220	200	550	1000
24	LOC	460	450	1000	1800	460	450	1400	2000
24	VOR/DME	460	450	1000	1800	460	450	1400	2000

Notes:

CIRCLING		C			D		
R/W	Procedure	MDA QNH ft	MDH QFE ft	Vis m	MDA QNH ft	MDH QFE ft	Vis m
06/24	All Procs	720	680	2400	800	760	3600

Notes:

TAKE-OFF		C	D
Runway	Facilities	m	m
06, 24	RCLL(H)+REDL(H)+Multi RVR (1)	125	150
06, 24	RCLL+REDL+Multi RVR	150	200
06, 24	RCLL+REDL	200	250
06, 24	RCL and/or REDL (2)	250	300
All	Nil (Day only)	500	500

Notes:

- (1) Subject to Approval.
- (2) For night operations, at least runway edge and end lights required.

JAR-OPS Landing Minima

SHANNON

The following Minima is for Public Transport aircraft and conforms to JAR-OPS1 regulations.

STRAIGHT-IN APPROACH		A				B			
R/W	Procedure	DA/ MDA QNH ft	DH/ MDH QFE ft	RVR m	RVR No ALS m	DA/ MDA QNH ft	DH/ MDH QFE ft	RVR m	RVR No ALS m
06	ILS/DME	250	200	700	1000	250	200	700	1000
06	LOC/DME	350	310	1200	1500	350	310	1300	1500
06	VOR/DME	360	320	1200	1500	360	320	1300	1500
24	ILS	220	200	550	1000	220	200	550	1000
24	LOC	460	450	900	1500	460	450	1000	1500
24	VOR/DME	460	450	900	1500	460	450	1000	1500

Notes:

CIRCLING		A			B		
R/W	Procedure	MDA QNH ft	MDH QFE ft	Vis m	MDA QNH ft	MDH QFE ft	Vis m
06/24	All Procs	500	460	1500	550	500	1600

Notes:

TAKE-OFF		A	B
Runway	Facilities	m	m
06, 24	RCLL(H)+REDL(H)+Multi RVR (1)	125	125
06, 24	RCLL+REDL+Multi RVR	150	150
06, 24	RCLL+REDL	200	200
06, 24	RCL and/or REDL (2)	250	250
All	Nil (Day only)	500	500

Notes:

- (1) Subject to Approval.
- (2) For night operations, at least runway edge and end lights required.

JAR-OPS Landing Minima

SHANNON

The following Minima is for Public Transport aircraft and conforms to JAR-OPS1 regulations.
See explanatory notes in Flight Information Supplement .

CAT II

Special aircrew and aircraft certification required.

	C				D			
	DA QNH ft	DH QFE ft	RA ft	RVR m	DA QNH ft	DH QFE ft	RA ft	RVR m
Runways								
24 (1)	115	100	99	300	115	100	99	350

Notes:

1) Cat D RVR may be reduced to 300m when conducting autoland.

	A				B			
	DA QNH ft	DH QFE ft	RA ft	RVR m	DA QNH ft	DH QFE ft	RA ft	RVR m
Runways								
24	115	100	99	300	115	100	99	300

Notes:

HELICOPTER

SHANNON

The following Minima is for Public Transport Helicopters and conforms to JAR-OPS3 regulations.

STRAIGHT-IN APPROACH

R/W	Procedure	DA/ MDA QNH ft	DH/ MDH QFE ft	Full ≥=720 RVR m	Inter 420-719 RVR m	Basic < 420 RVR m	No ALS RVR m
06	ILS/DME	250	200	N/A	600	700	1000
06	LOC/DME	350	310	N/A	1000	1000	1000
06	VOR/DME	360	320	N/A	1000	1000	1000
24	ILS	220	200	500	600	700	1000
24	LOC	460	450	800	1000	1000	1000
24	VOR/DME	460	450	800	1000	1000	1000

Notes:

CIRCLING

R/W	Procedures	MDA QNH ft	MDH QFE ft	Vis m
06/24	All Procs	500	460	800

Notes: