

Airport information:

Country: Ireland

City: IRELAND WEST

Coordinates: N 53° 54.6', W 008° 49.1'

Elevation: 665

Customs: Customs avail 24HR PN

Fuel: 100LL, Jet A1

RFF: CAT 4. Up to CAT 7 Scheduled Flights. CAT 9 avbl 48HRS PN

hours: ATS: MON: 0800-1630; TUE-FRI: 1000-1630; SAT: 0900-1630; SUN:1000-1630

Runways:

Runway 09

Takeoff length: 2340, Landing length: 2147

Runway 27

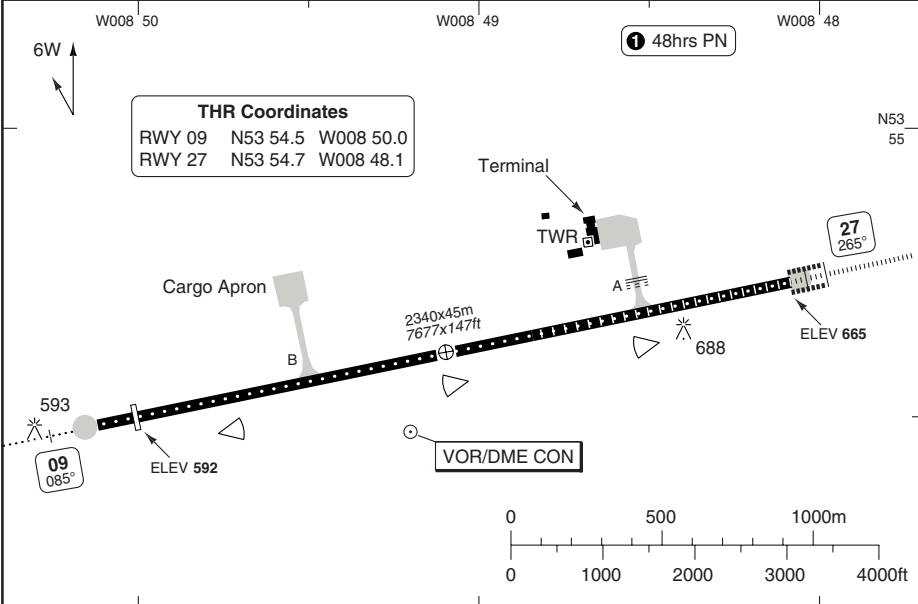
Takeoff length: 2300, Landing length: 2300

AERODROME

Knock IRELAND WEST

Connaught GND 130.7 121.9	TWR 130.7
--	---------------------

AD Elev 665	ARP: N53 54.6 W008 49.1	RFF: CAT 4-7 for scheduled flights, CAT 9 1	AD HR: 07-19
--------------------	-------------------------	--	--------------



RWY	Slope	TORA m/ft	LDA m/ft	ALS	REDL	RCLL	Additional
09	+1.0	2340 / 7677	2147 / 7044	H-E 2	H 4	15m	P 3° (50)
27	-1.0	2300 / 7546	2300 / 7546	H-B 3	H 4	15m	P 3° (50)

2 354m **3** 583.5m **4** White.

EU OPS TAKE OFF MINIMA

RWY	Facilities	RVR	
		A B C	D
27	HRCLL + HREDL + Multiple RVR Ap.O LVTO	125m	150m
	RCLL + REDL + Multiple RVR LVTO	150m	200m
	RCLL + REDL LVTO	200m	250m
	RCL (day only) or RCL + REDL LVTO	250m	300m
09	RCL (day only) or RCL + REDL LVTO	400m	400m
09/27	NIL (day only) LVTO	500m	500m

Note: LVP apply when ceiling below 200ft and IRVR is below 720m or met vis is less than 800M.

© Navitech - eikn01laorg0

Change: Chart re-designed.

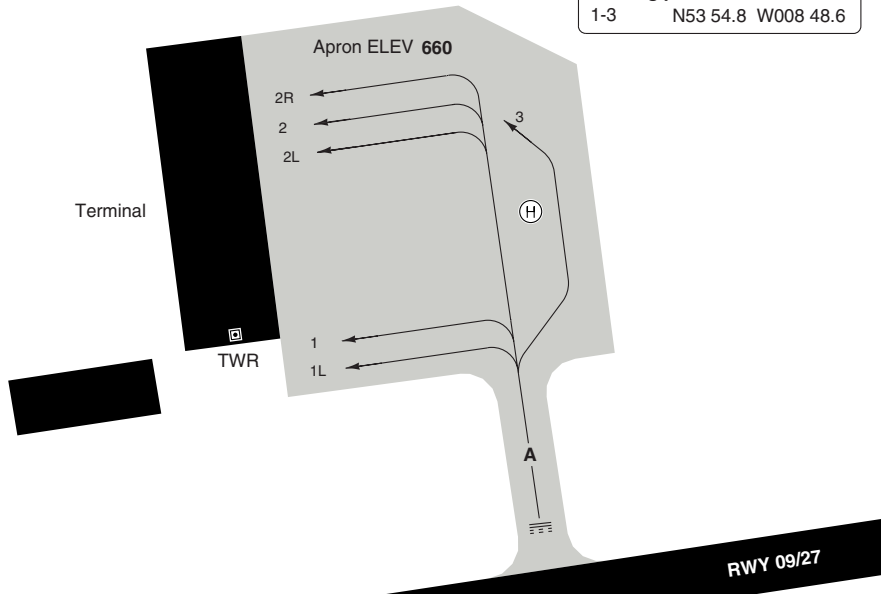
THIS CHART IS A PART OF NAVIGRAPH NDAC AND IS INTENDED FOR FLIGHT SIMULATION USE ONLY

AERODROME Parking

Knock IRELAND WEST

Connaught GND 130.7 121.9	TWR 130.7
---	---------------------

Parking position coordinates
1-3 N53 54.8 W008 48.6

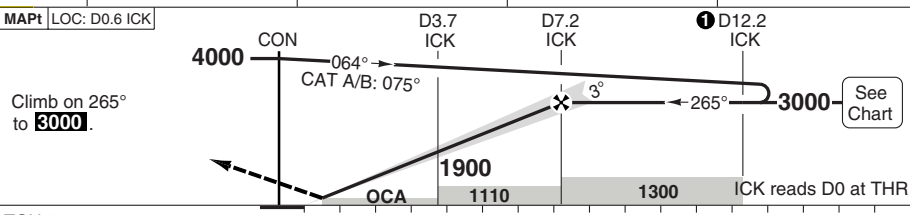
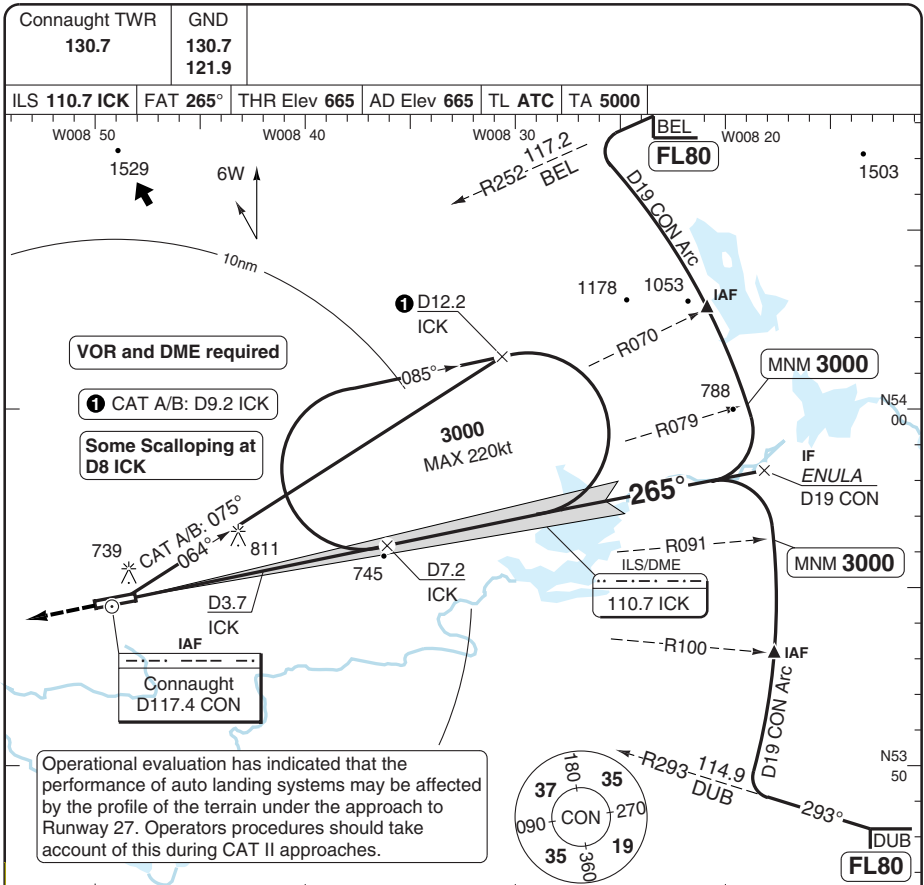


LOW VISIBILITY PROCEDURES

- 1.1 Approved for RWY 27.
- 1.2 Will apply when cloud ceiling is below 200ft/60m and IRVR less than 720m or met vis less than 800m.
- 1.3 When in operation, one aircraft will be given approval to manoeuvre at any one time.
- 1.4 CAT II holds on TWY A and B apply as appropriate.
- 1.5 TWY/stopbar/centreline lighting will be in use.
- 1.6 **CAUTION:** Operational evaluation has indicated that the performance of auto landing systems may be affected by the profile of the terrain under the approach to Runway 27. Operators' procedures should take account of this during CAT II approaches.

ILS A RWY 27

Knock IRELAND WEST



TCH 49

ACFT	CAT II	ILS	LOC+DME	Circling	DME ICK	3.0° ALT	LDA 2300x45 7546x147ft P 3° (50)	
A				1070 (400) 1.5km	7	2940		
B	RA 134 300m	870 (200) 750m	970 (305) 1000m	1170 (500) 1.6km	6	2620		
C				1270 (600) 2.4km	5	2300		
D				1370 (700) 3.6km	4	1990		
GS	80	100	120	140	160	3	1670	
ROD 3.0°	440	550	660	770	880	2	1350	
FAF-MAPt	Not Published							

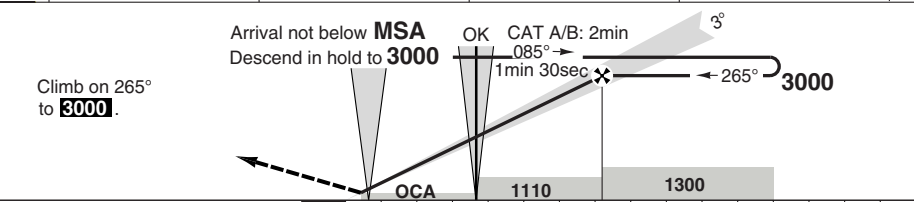
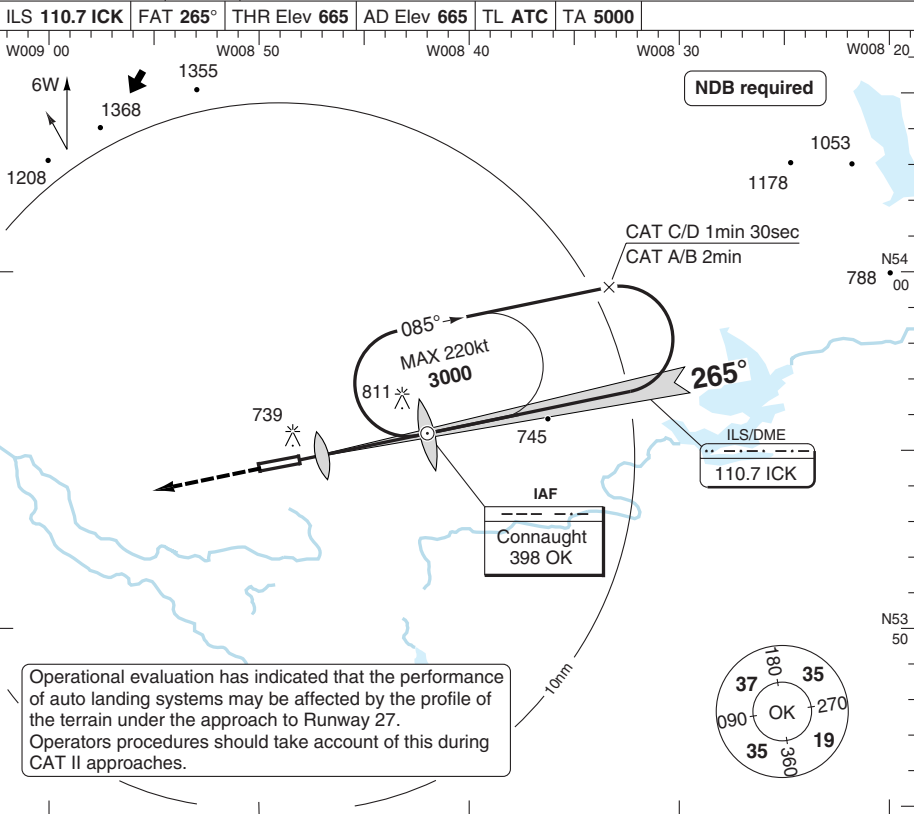
583.5

© Navtech - eikn01iaip00
EU OPS

ILS B RWY 27

Knock IRELAND WEST

Connaught TWR 130.7	GND 130.7 121.9				
ILS 110.7 ICK	FAT 265°	THR Elev 665	AD Elev 665	TL ATC	TA 5000



ACFT	CAT II	ILS	Circling	LDA 2300x45 7546x147ft P 3° (50)	
A	FA 134 300m	870 (200) 750m	1070 (400) 1.5km	 FALS 583.5	
B			1170 (500) 1.6km		
C			1270 (600) 2.4km		
D			1370 (700) 3.6km		
GS	80	100	120		140
ROD 3.0°	420	530	640	740	850
FAF-MAPt	Not Published				

© Navtech EAG - eikn02iaip00
EU OPS

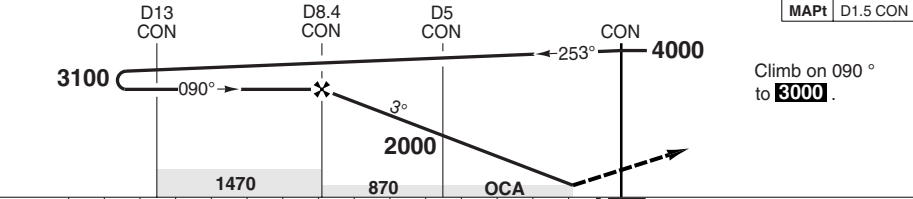
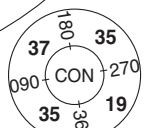
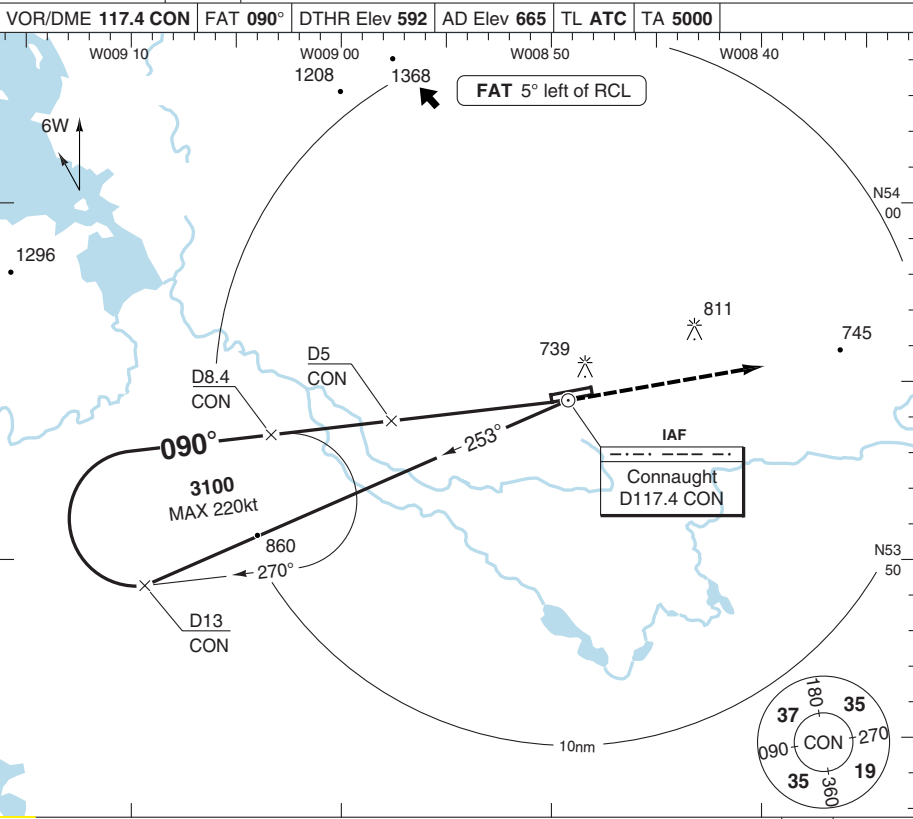
Change: Note.

THIS CHART IS A PART OF NAVIGRAPH NDAC AND IS INTENDED FOR FLIGHT SIMULATION USE ONLY

VOR RWY 09 VOR/DME

Knock IRELAND WEST

Connaught TWR 130.7	GND 130.7 121.9				
VOR/DME 117.4 CON	FAT 090°	DTHR Elev 592	AD Elev 665	TL ATC	TA 5000



ACFT	VOR+DME Circling							
	A	1100m	1070 (400)					
	B		1170 (500)					
	C		1270 (600)					
	D		1370 (700)					
			1470					
GS		80	100	120	140	160		
ROD 3.0°		420	530	640	740	850		
FAF-MAPt		Not Published						

DME CON	3.0° ALT	LDA 2147x45 7044x147ft P 3° (50)
7	2650	
6	2330	
5	2020	
4	1700	
3	1380	
2	1060	

BALS
354

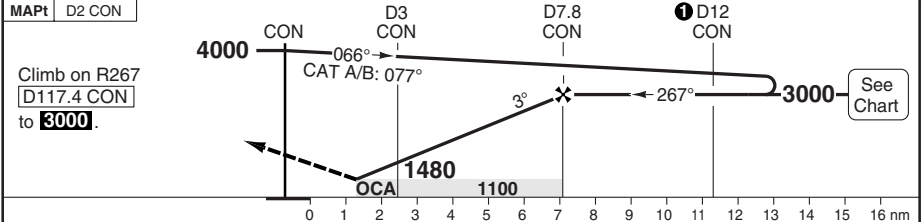
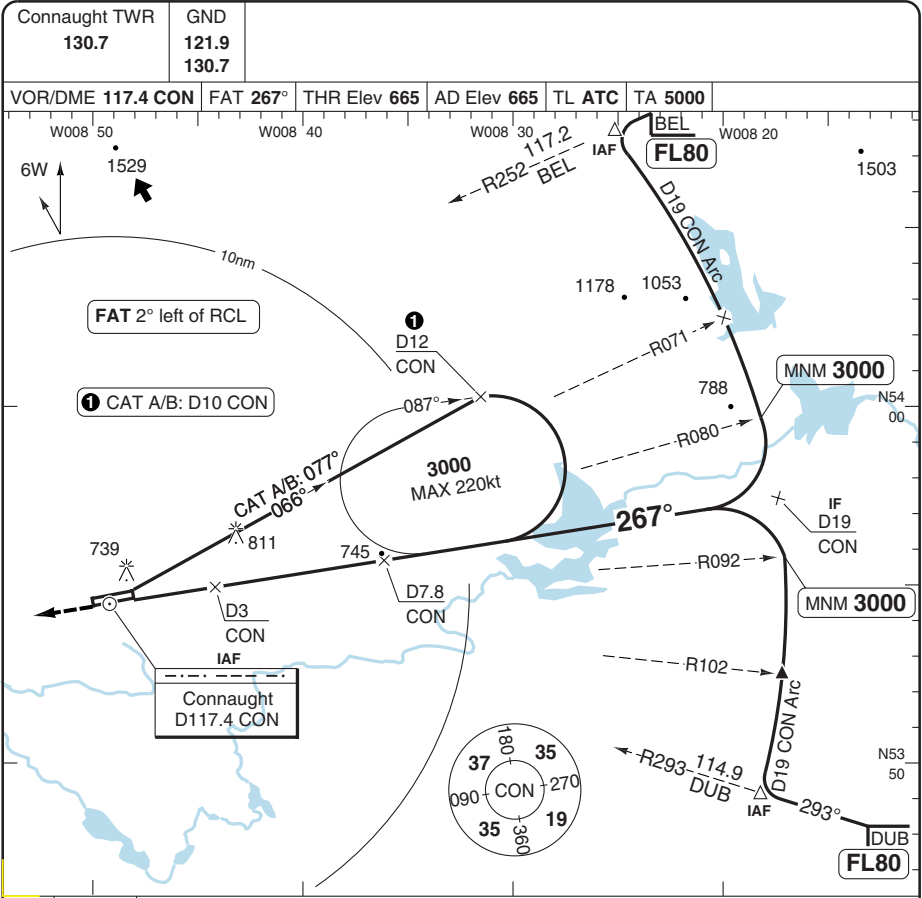
© Navtech EAG - eikn03iarp00 EU OPS

Change: MSA.

THIS CHART IS A PART OF NAVIGRAPH NDAC AND IS INTENDED FOR FLIGHT SIMULATION USE ONLY

VOR RWY 27 VOR/DME

Knock IRELAND WEST



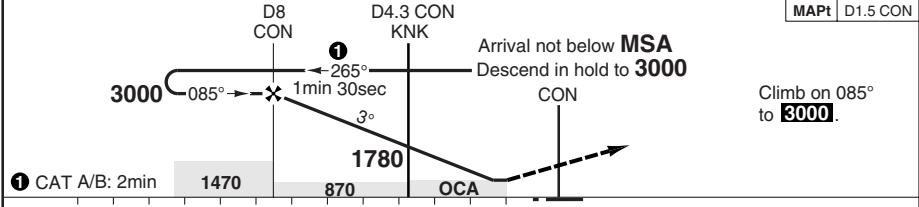
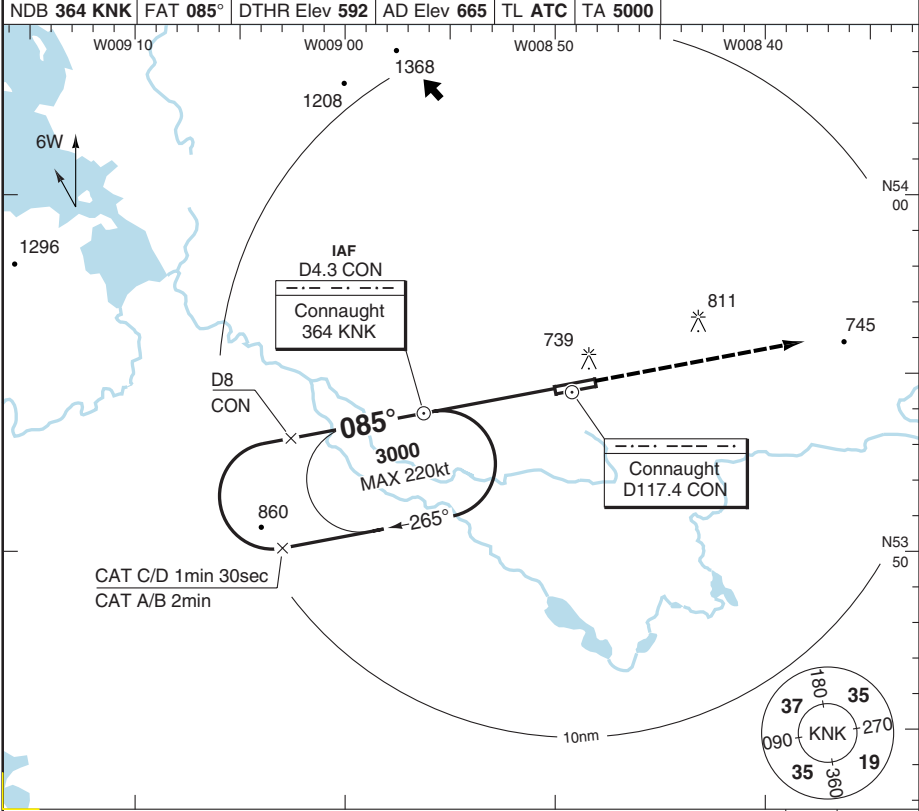
ACFT	VOR+DME	Circling	DME CON	3.0° ALT	LDA 2300x45
A	1100 (435) 1500m	1100 (435) 1.5km	7	2750	7546x147ft P 3° (50)
B		1170 (500) 1.6km	6	2430	
C	1100 (435) 1600m	1270 (600) 2.4km	5	2110	
D		1370 (700) 3.6km	4	1800	
			3	1480	
GS	80	100	120	140	160
ROD 3.0°	420	530	640	740	850
FAF-MAPt	Not Published				

© Navtech EAG - eikn04iarp00

NDB RWY 09 NDB/DME

Knock IRELAND WEST

Connaught TWR 130.7	GND 130.7 121.9				
NDB 364 KNK	FAT 085°	DTHR Elev 592	AD Elev 665	TL ATC	TA 5000



① CAT A/B: 2min	1470	870	OCA											
nm	13	12	11	10	9	8	7	6	5	4	3	2	1	0

ACFT	NDB+DME	Circling								
		A	990 (398)	1070 (400)	1.5km	1500m				
	B	1500m	1170 (500)	1.6km						
	C	990 (398)	1270 (600)	2.4km						
	D	1600m	1370 (700)	3.6km						
GS	80	100	120	140	160					
ROD 3.0°	420	530	630	740	840					
FAF-MAPt	Not Published									

DME CON	3.0° ALT	LDA 2147x45 7044x147ft P 3° (50)
7	2680	
6	2360	
5	2050	
4	1730	
3	1410	
2	1090	BALS

© Navtech EAG - eikn05iainp00

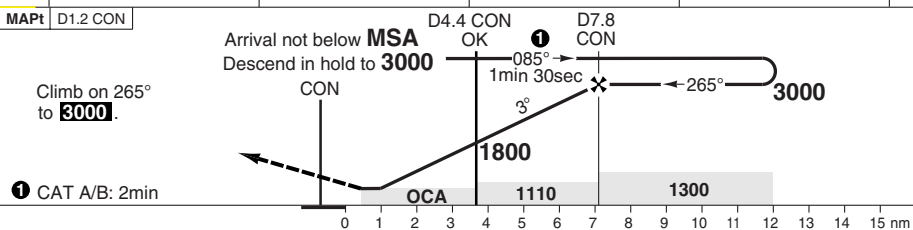
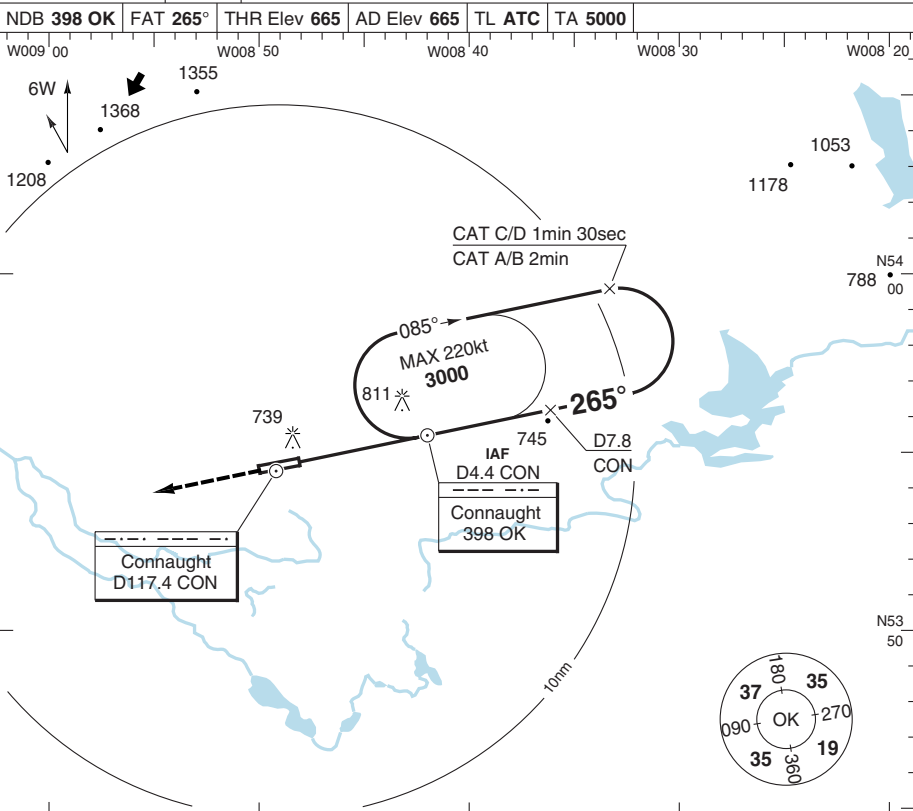
Change: MSA.

THIS CHART IS A PART OF NAVIGRAPH NDB AND IS INTENDED FOR FLIGHT SIMULATION USE ONLY

NDB RWY 27 NDB/DME

Knock IRELAND WEST

Connaught TWR 130.7	GND 130.7 121.9				
NDB 398 OK	FAT 265°	THR Elev 665	AD Elev 665	TL ATC	TA 5000



ACFT	NDB+DME		Circling					DME CON	3.0° ALT	LDA 2300x45 7546x147ft P 3° (50)	
	A	990 (325) 1100m	1070 (400)	120	140	160	7				2750
	B		1170 (500)	120	140	160	6				2430
	C		1270 (600)	120	140	160	5				2110
	D		1370 (700)	120	140	160	4				1800
	3.6km		120	140	160	3	1480				
GS	80	100	120	140	160	2	1160	FALS 583.5			
ROD 3.0°	420	530	640	740	850						
FAF-MAPt	Not Published										

© Navtech EAG - eikn06iarp00

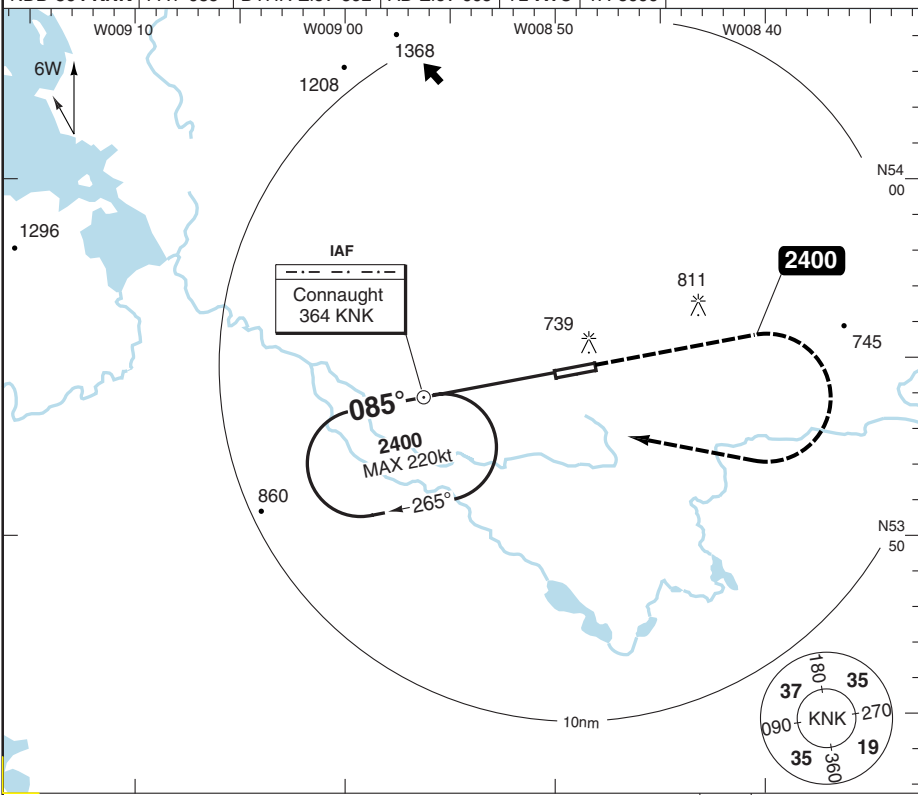
Change: MSA.

THIS CHART IS A PART OF NAVIGRAPH NDAC AND IS INTENDED FOR FLIGHT SIMULATION USE ONLY

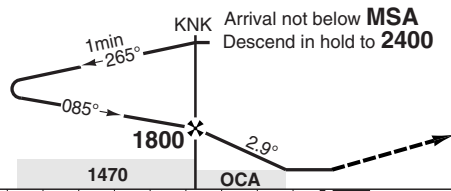
NDB RWY 09

Knock IRELAND WEST

Connaught TWR 130.7	GND 130.7 121.9				
NDB 364 KNK	FAT 085°	DTHR Elev 592	AD Elev 665	TL ATC	TA 5000



PANS OPS



MAPt | THR / 3.7nm after KNK

Climb on 085° to **2400**. Turn right to [364 KNK] and hold.

ACFT	NDB	Circling
A	980 (388) 1500m	1070 (400) 1.5km
B		1170 (500) 1.6km
C	980 (388) 1600m	1270 (600) 2.4km
D		1370 (700) 3.6km

nm	13	12	11	10	9	8	7	6	5	4	3	2	1	0
GS	80	100	120	140	160									
ROD 2.9°	410	510	620	720	820									
FAF +20s	1660	1630	1590	1560	1530									
+40s	1530	1460	1390	1320	1250									
+60s	1390	1290	1180	1080	-									
FAF- 980	1:52	1:29	1:14	1:04	0:56									
FAF-MAPt	2:48	2:14	1:52	1:36	1:24									

LDA 2147x45
7044x147ft
P 3° (50)

BALS

354

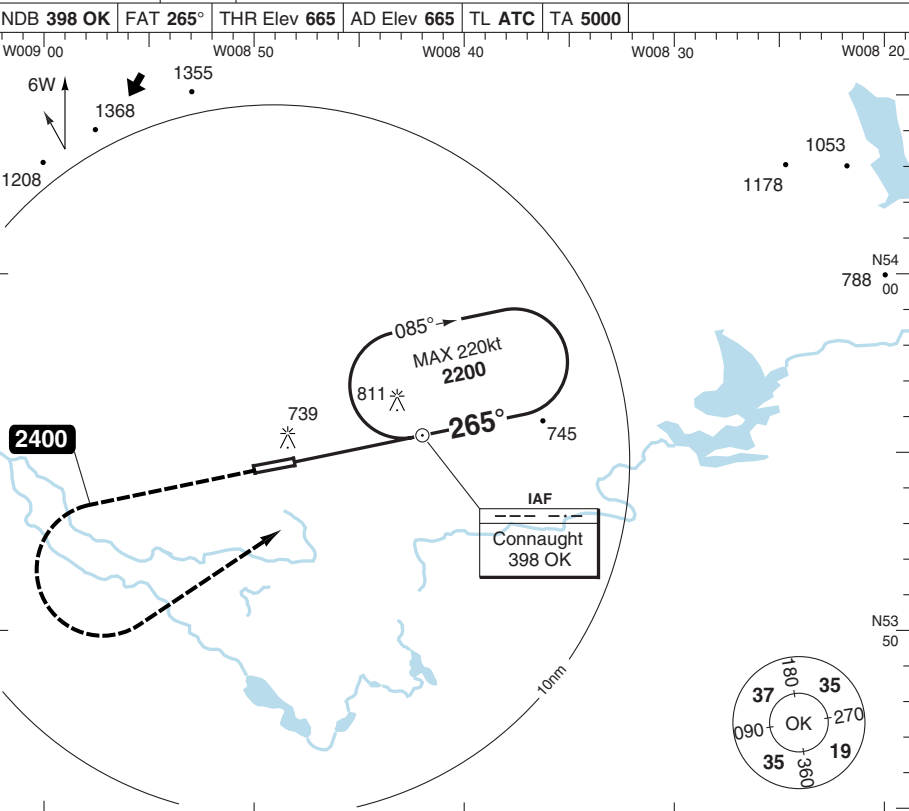
© Navtech EAG - eikn07iarp00

Change: MSA.

NDB RWY 27

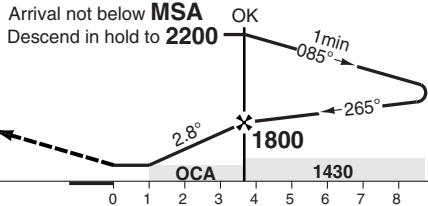
Knock IRELAND WEST

Connaught TWR 130.7	GND 130.7 121.9				
NDB 398 OK	FAT 265°	THR Elev 665	AD Elev 665	TL ATC	TA 5000



MAPt THR / 3.7nm after OK

Climb on 265° to **2400**. Turn left to **398 OK** and hold.



Arrival not below **MSA** OK
Descend in hold to **2200**

ACFT	NDB	Circling
A	1020 (350) 1200m	1070 (400) 1.5km
B		1170 (500) 1.6km
C		1270 (600) 2.4km
D		1370 (700) 3.6km

GS	80	100	120	140	160	LDA 2300x45 7545x147ft P 3° (50)
ROD 2.8°	400	500	600	700	790	
FAF +20s	1670	1630	1600	1570	1540	
+40s	1530	1470	1410	1340	1270	
+60s	1400	1300	1210	1110	1010	
FAF- 1010	1:52	1:30	1:15	1:04	0:56	
FAF-MAPt	2:44	2:12	1:50	1:34	1:22	

© Navtech EAG - eikn08iarp00

EU OPS

FALS

583.5

Change: MSA.

JAR-OPS Landing Minima

Knock **IRELAND WEST**

The following Minima is for Public Transport aircraft and conforms to JAR-OPS1 regulations.

STRAIGHT-IN APPROACH		C				D			
R/W	Procedure	DA/ MDA QNH ft	DH/ MDH QFE ft	RVR m	RVR No ALS m	DA/ MDA QNH ft	DH/ MDH QFE ft	RVR m	RVR No ALS m
09	VOR/DME	870	280	1400	1600	870	280	1600	1800
09	NDB/DME	990	400	1600	1800	990	400	1800	2000
09	NDB	980	390	1600	1800	980	390	1800	2000
27	ILS	870	200	700	1000	870	200	700	1000
27	LLZ	970	310	1400	1800	970	310	1600	2000
27	VOR/DME	1100	440	1400	1800	1100	440	1600	2000
27	NDB/DME	990	330	1400	1800	990	330	1600	2000
27	NDB	1010	350	1400	1800	1010	350	1600	2000

Notes:

CIRCLING		C			D		
R/W	Procedure	MDA QNH ft	MDH QFE ft	Vis m	MDA QNH ft	MDH QFE ft	Vis m
All Procs		1270	600	2400	1370	700	3600

Notes:

TAKE-OFF		C		D	
Runway	Facilities	RVR	Vis	RVR	Vis
27	RCLL(H)+ REDL(H)+ Multi RVR	125	-	150	-
27	RCLL+ REDL + Multi RVR	150	-	200	-
27	RCLL + REDL	200	-	250	-
27	RCL and/or REDL	250	-	300	-
09	RCL and/or REDL	400	-	400	-
09, 27	Nil (Day only)	500	-	500	-

Notes:

LVP apply when ceiling is below 200ft and IRVR is less than 720m or met. Vis is less than 800m.

JAR-OPS Landing Minima

Knock **IRELAND WEST**

The following Minima is for Public Transport aircraft and conforms to JAR-OPS1 regulations.

STRAIGHT-IN APPROACH		A				B			
R/W	Procedure	DA/ MDA QNH	DH/ MDH QFE	RVR	RVR	DA/ MDA QNH	DH/ MDH QFE	RVR	RVR
		ft	ft	m	m	ft	ft	m	m
09	VOR/DME	870	280	1200	1500	870	280	1300	1500
09	NDB/DME	990	400	1300	1500	990	400	1400	1500
09	NDB	980	390	1300	1500	980	390	1400	1500
27	ILS	870	200	700	1000	870	200	700	1000
27	LLZ	970	310	1200	1500	970	310	1300	1500
27	VOR/DME	1100	440	1200	1500	1100	440	1300	1500
27	NDB/DME	990	330	1200	1500	990	330	1300	1500
27	NDB	1010	350	1200	1500	1010	350	1300	1500

Notes:

CIRCLING		A			B		
R/W	Procedure	MDA QNH	MDH QFE	Vis	MDA QNH	MDH QFE	Vis
		ft	ft	m	ft	ft	m
All Procs		1070	400	1500	1170	500	1600

Notes:

TAKE-OFF		A		B	
Runway	Facilities	RVR	Vis	RVR	Vis
27	RCLL(H)+ REDL(H)+ Multi RVR	125	-	125	-
27	RCLL+ REDL + Multi RVR	150	-	150	-
27	RCLL + REDL	200	-	200	-
27	RCL and/or REDL	250	-	250	-
09	RCL and/or REDL	400	-	400	-
09, 27	Nil (Day only)	500	-	500	-

Notes:

LVP apply when ceiling is below 200ft and IRVR is less than 720m or met. Vis is less than 800m.

JAR-OPS Landing Minima

Knock IRELAND WEST

The following Minima is for Public Transport aircraft and conforms to JAR-OPS1 regulations.

CAT II

Special aircrew and aircraft certification required.

Runways	C				D			
	DA	DH	RA	RVR	DA	DH	RA	RVR
	QNH	QFE			QNH	QFE		
27 (1)	765	100	134	300	765	100	134	350

Notes:

- 1) Cat D RVR may be reduced to 300m when conducting autoland.

Runways	A				B			
	DA	DH	RA	RVR	DA	DH	RA	RVR
	QNH	QFE			QNH	QFE		
27	765	100	134	300	765	100	134	300

Notes:

HELICOPTER

Knock IRELAND WEST

The following Minima is for Public Transport Helicopters and conforms to JAR-OPS3 regulations.

STRAIGHT-IN APPROACH

R/W	Procedure	DA/ MDA QNH ft	DH/ MDH QFE ft	Full ≥=720 RVR m	Inter 420-719 RVR m	Basic < 420 RVR m	No ALS RVR m
09	VOR/DME	870	280	N/A	N/A	1000	1000
09	NDB/DME	990	400	N/A	N/A	1000	1000
09	NDB	980	390	N/A	N/A	1000	1000
27	ILS	870	200	N/A	600	700	1000
27	LLZ	970	310	N/A	1000	1000	1000
27	VOR/DME	1100	440	N/A	1000	1000	1000
27	NDB/DME	990	330	N/A	1000	1000	1000
27	NDB	1010	350	N/A	1000	1000	1000

Notes:

CIRCLING

R/W	Procedures	MDA QNH ft	MDH QFE ft	Vis m
All Procs		1070	400	800

Notes: