

EHEH

Airport information:

Country: Netherlands

City: EINDHOVEN

Coordinates: N 51° 27.0', E005 22.5

Elevation: 74

Customs:

Fuel: Jet A1

RFF: CAT 8 MON-FRI 0545-2145, SAT 0700-1900, SUN & PH 0900-2100

hours: MON-FRI 0545-2145, SAT 0700-1900, SUN, HOL 0900-2100. For CIV use: PPR

Runways:

Runway 04

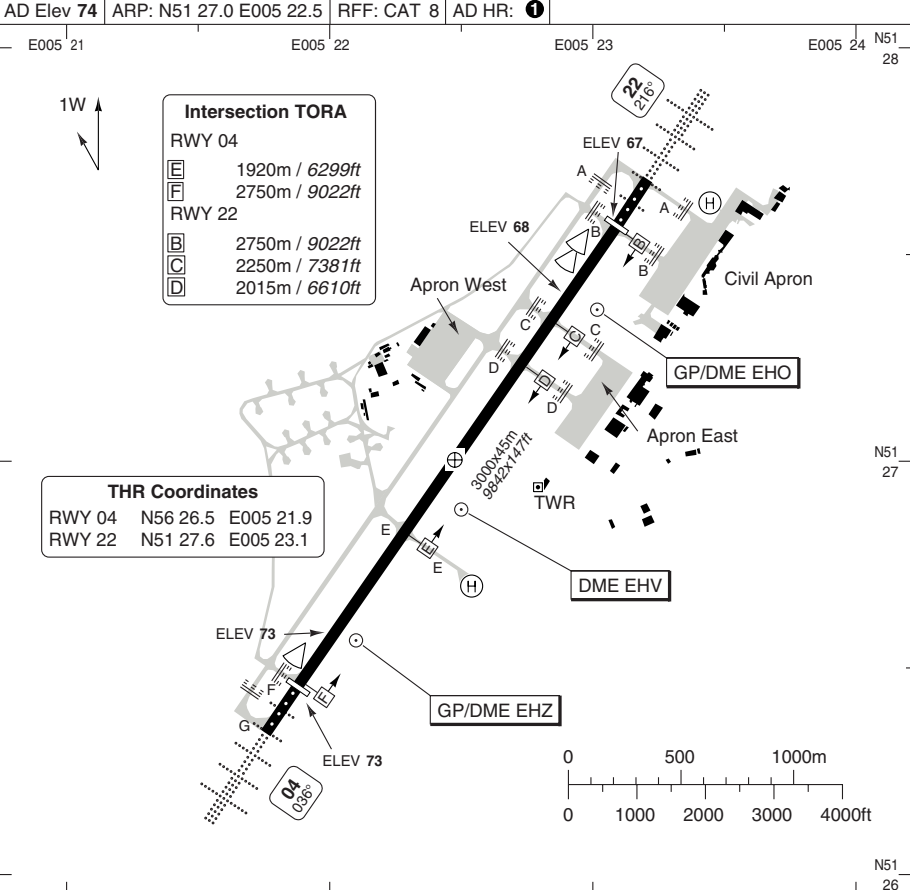
Takeoff length: 3000, Landing length: 2500

Runway 22

Takeoff length: 3000, Landing length: 2750

AERODROME

Eindhoven GND 121.925	TWR 131.0 122.1	ATIS 126.025
AD Elev 74	ARP: N51 27.0 E005 22.5	RF: CAT 8 AD HR: 1



RWY	Slope	TORA m/ft	LDA m/ft	ALS	REDL	Additional
04	0	3000 / 9842	2750 / 9022	H-C	H	P 3° (50)
22	0	3000 / 9842	2750 / 9022	H-C	H	P 3° (38)

1 MON - FRI: 0545 - 2145; SAT: 07-19; SUN, HOL: 09-21.

EU OPS TAKE OFF MINIMA

RWY	Facilities	RVR		
		A B C	D	
04/22	RCL (day only) or RCL + REDL	LVTO	250m	300m
	RCL (day only) or RCL + REDL		400m	400m
	NIL (day only)		500m	500m

© Navtech - eheh01laorg0

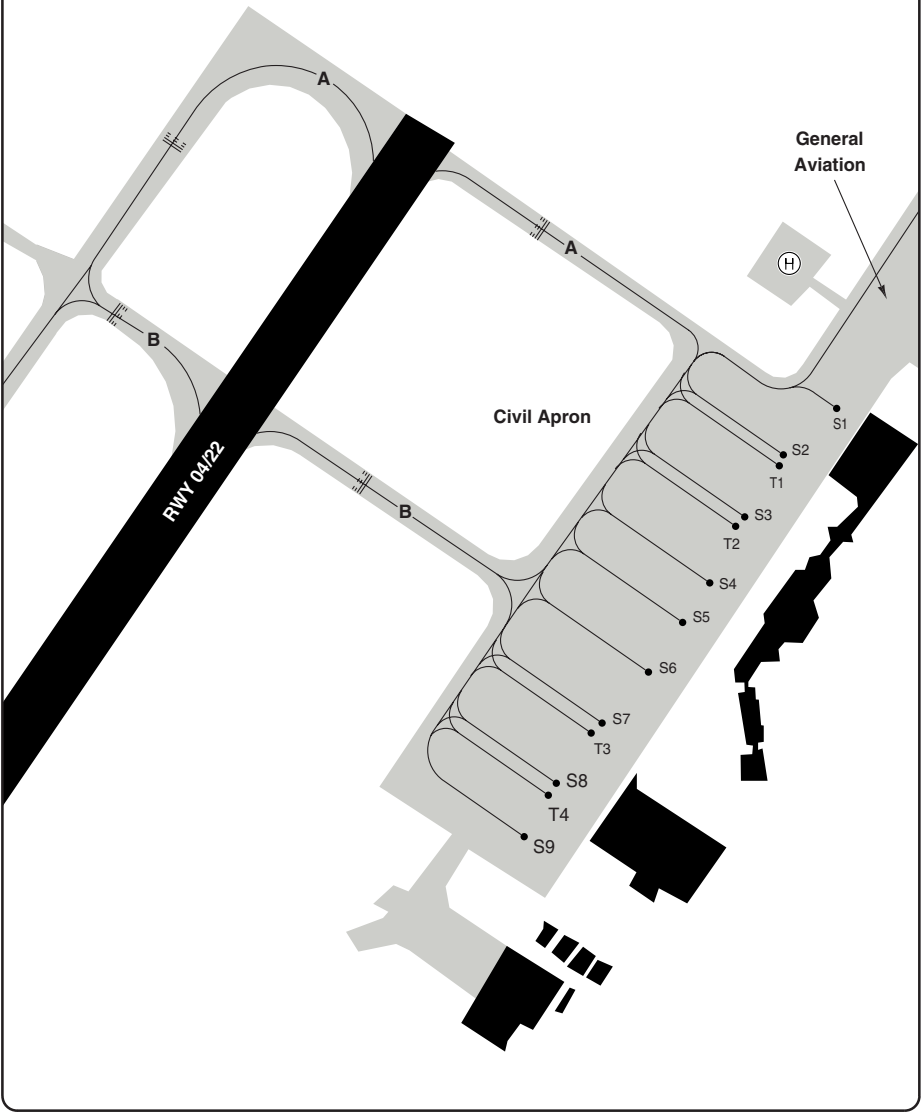
Change: New print.

THIS CHART IS A PART OF NAVIGRAPH NDAC AND IS INTENDED FOR FLIGHT SIMULATION USE ONLY

AERODROME

10 - 2

Eindhoven GND	TWR	ATIS
121.925	131.0	126.025
	122.1	



© Navitech - eheh02laorg0

Change: New spec.

THIS CHART IS A PART OF NAVIGRAPH NDAC AND IS INTENDED FOR FLIGHT SIMULATION USE ONLY

GENERAL

GENERAL INFORMATION

10 - 3

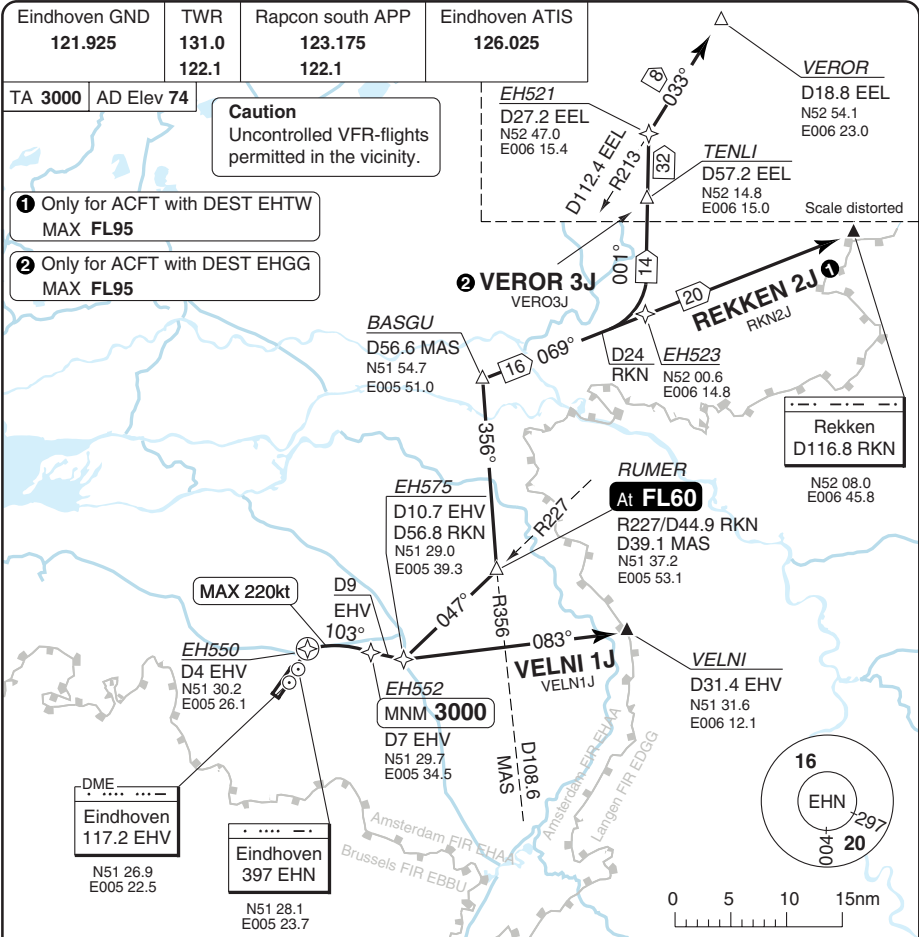
1. **SPEED**
MAX 250kt below FL100.
2. **TRAFFIC NOTES**
 - 2.1 Right hand circuit RWY 22.
 - 2.2 Glider activity daily SR - SS.
3. **TWY RESTRICTIONS**
 - 3.1 TWY B west, F west and A east not to be used by wide-body ACFT and ACFT with wingspan exceeding 36m/118ft.
 - 3.2 TAXI proc for widebody ACFT and ACFT with wingspan exceeding 36m/118ft.
LDG RWY 04: Vacate RWY to the right at INT B. If unable vacate RWY to the left at INT A. Taxi via parallel TWY to INT C. After permission from GND or TWR enter RWY to the left and vacate to the right at INT B.
DEP RWY 04: Taxi via B, after permission enter RWY to the left and vacate to the right at INT C. Taxi via parallel TWY to INT G.
LDG RWY 22: Vacate RWY to the right at INT E or G. Taxi via parallel TWY to INT C. After permission from GND or TWR enter RWY to the left and vacate to the right at INT B.
DEP RWY 22: Taxi via INT B. After permission enter RWY to the left and vacate to the right at INT C. Taxi via parallel TWY to INT A.
 - 3.3 TWY width MNM 16.7m/55ft.
 - 3.4 No turns greater than 90° on RWY/TWYs allowed.
 - 3.5 For TWR outside OPR HR, contact Dutch MIL on FREQ 132.35.
4. **NAP ARRIVAL**
All ACFT with MTOW more than 2000kg shall perform an instrument approach.
5. **CIRCLING**
Circling approaches prohibited.
6. **NAP DEPARTURE**
(All ACFT with MTOW more than 2000kg)
RWY 04
Climb on RWY HDG to MNM 1000ft and D4 EHV.
RWY 22
Climb on RWY HDG to MNM 1000ft and D3 EHV.
7. **START UP**
 - 7.1 Request shall be made to GND 10min prior to start up.
 - 7.2 Push-back mandatory for ACFT with wing-span more than 10m/32ft.
8. **INTERSECTION TKOF**
Jet ACFT must use full RWY for TKOF, intersection A or G, due to NAP.
Intersection B or F only for propeller ACFT.

Change: Circling.

THIS CHART IS A PART OF NAVIGRAPH NDAC AND IS INTENDED FOR FLIGHT SIMULATION USE ONLY

SID RWY 04 **RNAV** Overlay Northeast, East

EINDHOVEN



30 - 1

SPEED: MAX 250kt below FL100.
ALT RESTRICTION: Climb to **FL60**

SID	Routeing	Altitudes
(INITIAL CLIMB)	Climb on 035° - at D4 EHV turn right (MAX 220kt) to 103° - follow SID.	
REKKEN 2J	At D9 EHV turn left - intop R227 RKN - RUMER - intop R356 MAS - R249 RKN - RKN. RNAV: THR04 - EH550 - EH552 - EH575 - RUMER - BASGU - RKN.	D7 EHV/EH552 MNM 3000 RUMER at FL60
VELNI 1J	At D10 EHV turn left to 083° - VELNI. RNAV: THR04 - EH550 - EH552 - EH575 - VELNI.	D7 EHV/EH552 MNM 3000
VEROR 3J	At D9 EHV turn left - intop R227 RKN - RUMER - intop R356 MAS - R249 RKN - at D24 RKN turn left - 001° - TENLI Continue on 001° - intop R213 EEL - VEROR. RNAV: THR04 - EH550 - EH552 - EH575 - RUMER - BASGU - EH523 - TENLI - EH521 - VEROR.	D7 EHV/EH552 MNM 3000 RUMER at FL60

© Navitech - eheh01daorg0

Change: New spec.

THIS CHART IS A PART OF NAVIGRAPH NDAC AND IS INTENDED FOR FLIGHT SIMULATION USE ONLY

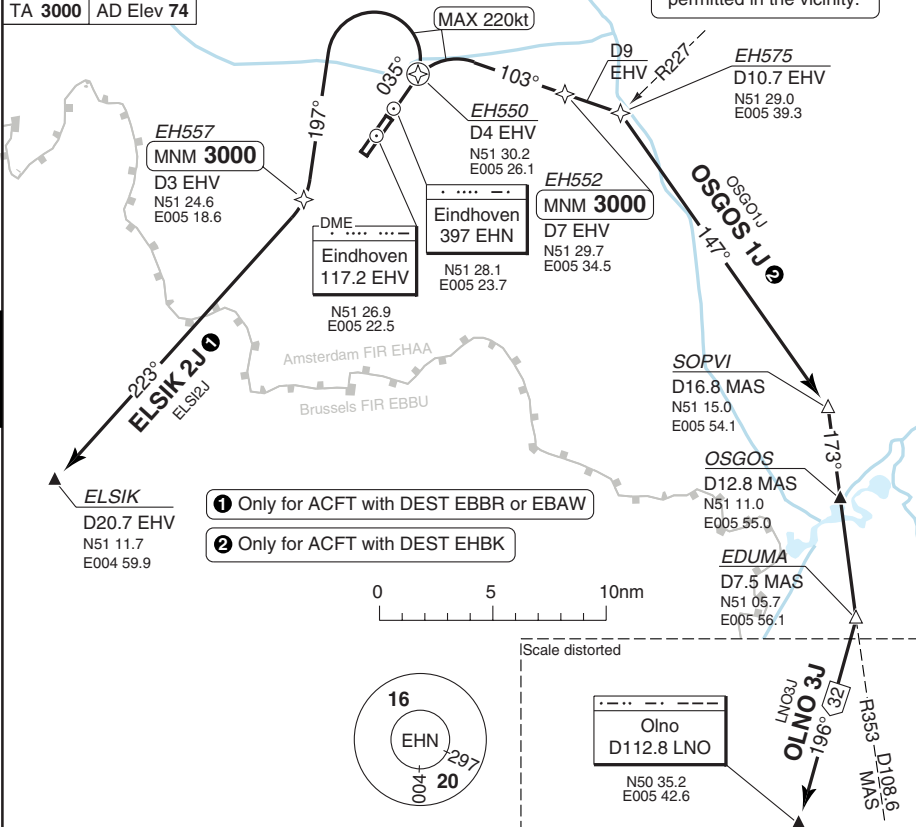
SID RWY 04 **RNAV** Overlay South

EINDHOVEN

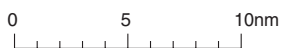
Eindhoven GND 121.925	TWR 131.0 122.1	Rapcon south APP 123.175 122.1	Eindhoven ATIS 126.025
---------------------------------	-------------------------------------	--	----------------------------------

Caution
Uncontrolled VFR-flights permitted in the vicinity.

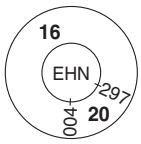
TA 3000 AD Elev 74



- ① Only for ACFT with DEST EBBR or EBAAW
- ② Only for ACFT with DEST EHBK



Scale distorted



CONTINUOUS ROUTING: OLNO 3J : (UN852) If the requested flight level is above FL95, cross: OSGOS MNM **FL 80** , EDUMA at **FL100** . Expect radar vectors by DUTCH MIL if unable to cross **FL80** in time.

SPEED: MAX 250kt below FL100.

ALT RESTRICTION: Climb to **FL60**.

SID	Routeing	Altitudes
ELSIK 2J	Climb on 035° - at D4 EHV turn left (MAX 220kt) - 197° - at D3 EHV turn right to 223° - ELSIK. RNAV: THR04 - EH550 - EH557 - ELSIK.	D3 EHV/EH557 MNM 3000
OLNO 3J	Climb on 035° - at D4 EHV turn right (MAX 220kt) - 103° - at D9 EHV turn right to 147° - SOPVI - intcp R353 MAS - OSGOS - EDUMA - intcp R016 LNO - LNO. RNAV: THR04 - EH550 - EH552 - EH575 - SOPVI - OSGOS - EDUMA - LNO.	D7 EHV/EH552 MNM 3000
OSGOS 1J	Climb on 035° - At D4 EHV turn right (MAX 220kt) - 103° - at D9 EHV turn right to 147° - SOPVI - intcp R353 MAS - OSGOS. RNAV: THR04 - EH550 - EH552 - EH575 - SOPVI - OSGOS.	D7 EHV/EH552 MNM 3000

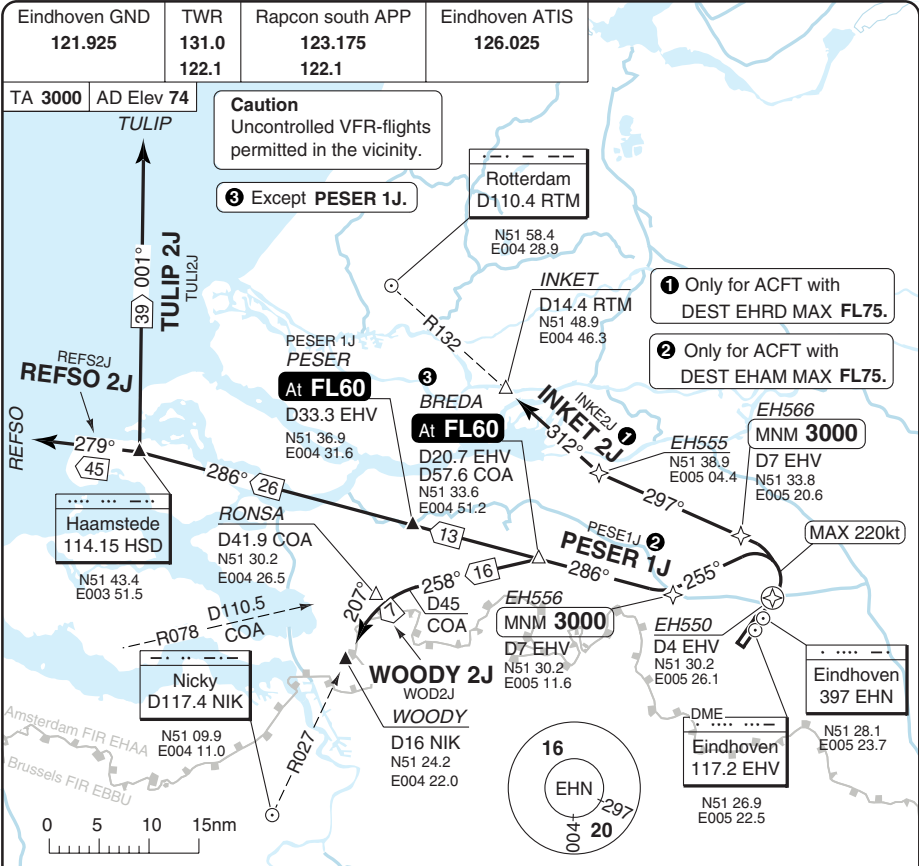
© Navtech - ehnh02daorg0

Change: New spec.

THIS CHART IS A PART OF NAVIGRAPH NDAC AND IS INTENDED FOR FLIGHT SIMULATION USE ONLY

SID RWY 04 **RNAV** Overlay Northwest, West

EINDHOVEN



SPEED: MAX 250kt below FL100.

ALT RESTRICTION: Except INKET 2J: Climb to **FL60**.
INKET 2J: Climb to **FL50**.

SID	Routing	Altitudes
(INITIAL CLIMB)	Climb on 035° - at D4 EHV turn left (MAX 220kt) - follow SID.	
INKET 2J	297° - intcp R132 RTM - INKET. RNAV: THR04 - EH550 - turn left - EH566 - EH555 - INKET.	D7 EHV/EH566 MNM 3000
PESER 1J	255° - intcp R106 HSD - BREDA - PESER. RNAV: THR04 - EH550 - turn left - EH556 - BREDA - PESER.	D7 EHV/EH556 MNM 3000 , PESER at FL60
REFSO 2J	255° - intcp R106 HSD - BREDA - HSD - R279 HSD - REFSO. RNAV: THR04 - EH550 - turn left - EH556 - BREDA - HSD - REFSO.	D7 EHV/EH556 MNM 3000 , BREDA at FL60
TULIP 2J	255° - intcp R106 HSD - BREDA - HSD - R001 HSD - TULIP. RNAV: THR04 - EH550 - turn left - EH556 - BREDA - HSD - TULIP.	D7 EHV/EH556 MNM 3000 , BREDA at FL60
WOODY 2J	255° - intcp R106 HSD - BREDA - intcp R078 COA - at D45 COA turn left - intcp R027 NIK - WOODY. RNAV: THR04 - EH550 - turn left - EH556 - BREDA - RONSA - WOODY.	D7 EHV/EH556 MNM 3000 BREDA at FL60

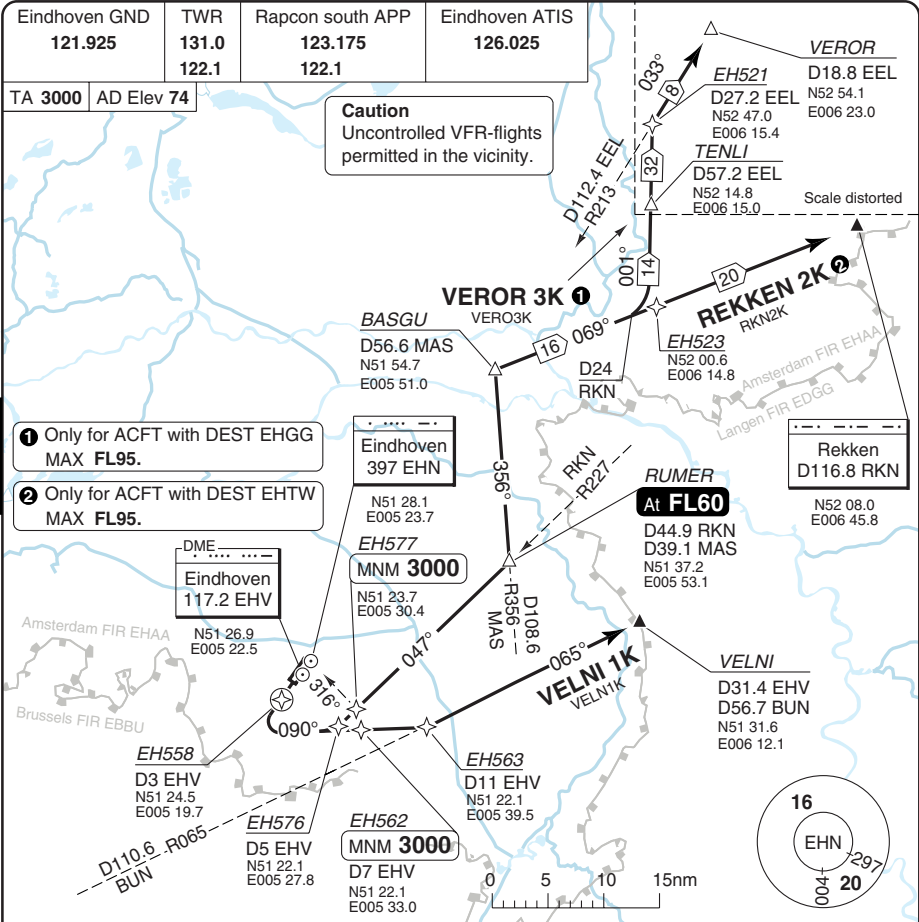
© Navitech - ehfh03daorg0

Change: New spec.

THIS CHART IS A PART OF NAVIGRAPH NDAC AND IS INTENDED FOR FLIGHT SIMULATION USE ONLY

SID RWY 22 **RNAV** Overlay Northeast, East

EINDHOVEN



- 1 Only for ACFT with DEST EHGG MAX FL95.
- 2 Only for ACFT with DEST EHTW MAX FL95.

SPEED: MAX 250kt below FL100.
ALT RESTRICTION: Climb to **FL60**.

SID	Routeing	Altitudes
(INITIAL CLIMB)	Climb on 215° - at D3 EHV turn left to 090° - follow SID.	
REKKEN 2K	At D5 EHV turn left - intcp R227 RKN - RUMER - intcp R356 MAS - R249 RKN - RKN. RNAV: THR22 - EH558 - EH576 - EH 577 - RUMER - BASGU - RKN.	316° to EHN/ EH577 MNM 3000 . RUMER at FL60
VELNI 1K	At D11 EHV turn left - intcp R065 BUN - VELNI. RNAV: THR22 - EH558 - EH562 - EH563 - VELNI.	D7 EHV/EH562 MNM 3000 .
VEROR 3K	At D5 EHV turn left - intcp R227 RKN - RUMER - intcp R356 MAS - R249 RKN - at D24 RKN turn left to 001° - TENLI - continue on 001° - intcp R213 EEL - VEROR. RNAV: THR22 - EH558 - EH576 - EH577 - RUMER - BASGU - EH523 - TENLI - EH521 - VEROR.	316° to EHN/ EH577 MNM 3000 . RUMER at FL60

© Navtech - eheh04daorg0

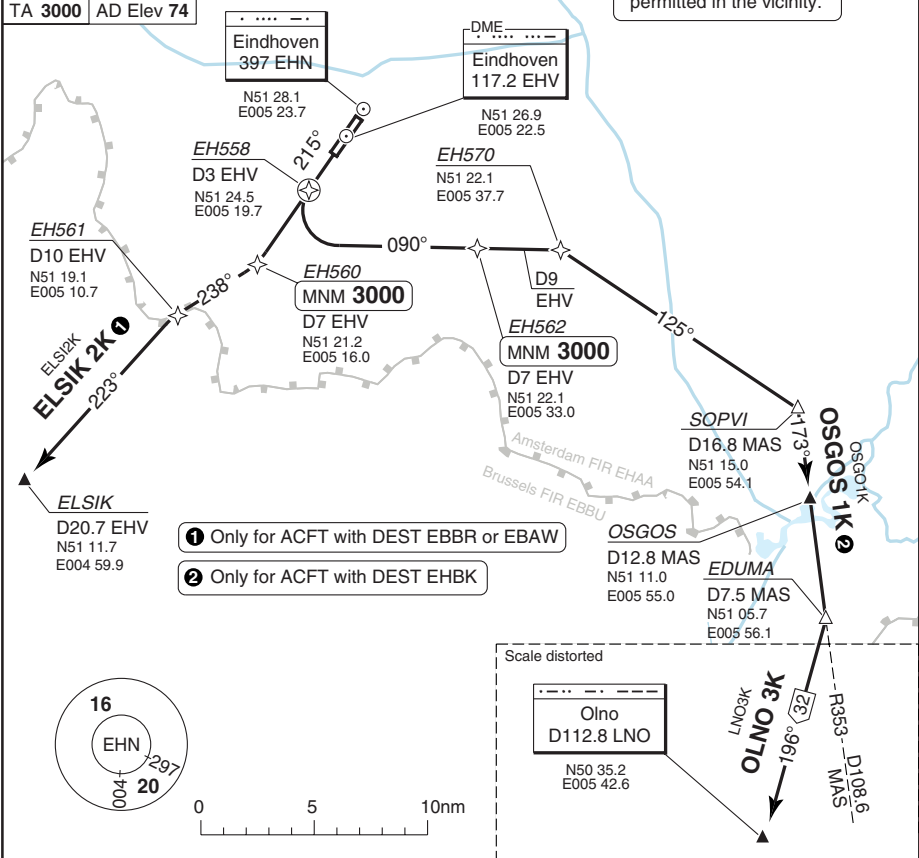
Change: New spec.

SID RWY 22 **RNAV** Overlay South

EINDHOVEN

Eindhoven GND 121.925	TWR 131.0 122.1	Rapcon south APP 123.175 122.1	Eindhoven ATIS 126.025
---------------------------------	-------------------------------------	--	----------------------------------

Caution
Uncontrolled VFR-flights permitted in the vicinity.



- 1 Only for ACFT with DEST EBBR or EBAW
- 2 Only for ACFT with DEST EHBK

30 - 5

CONTINUOUS ROUTING: OLNO 3K : (UN852) If the requested flight level is above **FL95**, Cross: OSGOS MNM **FL80**, EDUMA at **FL100**. Expect radar vectors by DUTCH MIL if unable to cross **FL80** in time.

SPEED: MAX 250kt below FL100.

ALT RESTRICTION: Climb to **FL60**.

SID	Routeing	Altitudes
ELSIK 2K	Climb on 215° - at D7 EHV turn right to 238° - at D10 EHV turn left to 223° - ELSIK. RNAV: THR22 - EH560 - EH561 - ELSIK.	D7 EHV/EH560 MNM 3000
OLNO 3K	Climb on 215° - at D3 EHV turn left to 090° - at D9 EHV turn right to 125° - SOPVI - intcp R353 MAS - OSGOS - EDUMA - intcp R016 LNO - LNO. RNAV: THR22 - EH558 - EH562 - EH570 - SOPVI - OSGOS - EDUMA - LNO.	D7 EHV/EH562 MNM 3000
OSGOS 1K	Climb on 215° - at D3 EHV turn left to 090° - at D9 EHV turn right to 125° - SOPVI - intcp R353 MAS - OSGOS. RNAV: THR22 - EH558 - EH562 - EH570 - SOPVI - OSGOS.	D7 EHV/EH562 MNM 3000

© Navitech - ehnh05daorg0

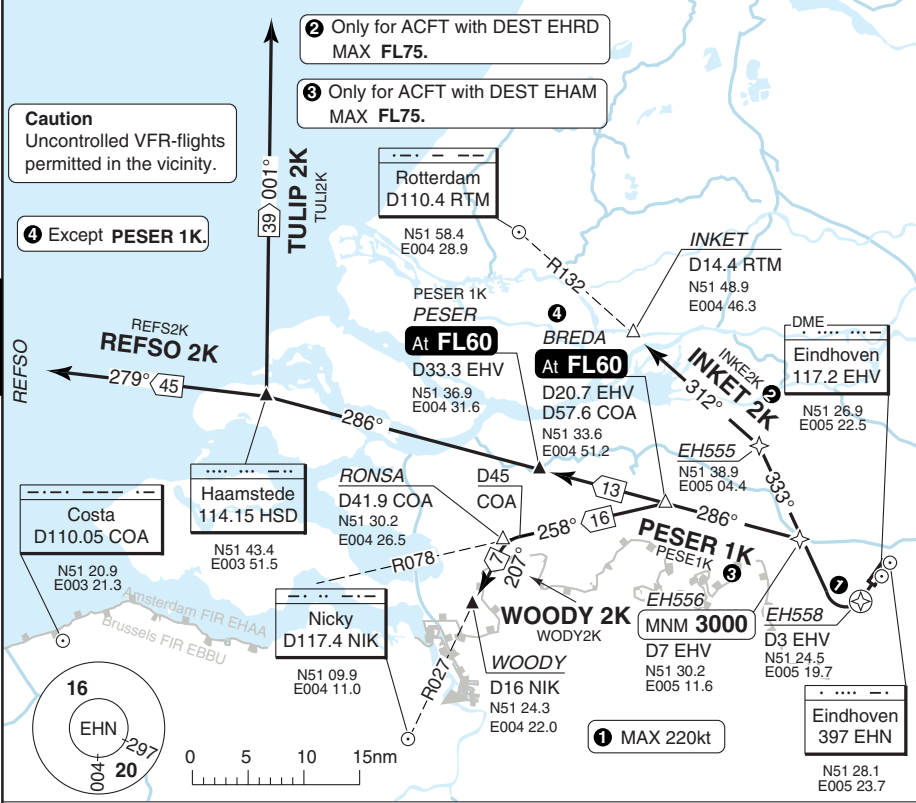
Change: New spec.

SID RWY 22 **RNAV** Overlay Northwest, West

EINDHOVEN

Eindhoven GND 121.925	TWR 131.0 122.1	Rapcon south APP 123.175 122.1	Eindhoven ATIS 126.025
---------------------------------	------------------------------	---	----------------------------------

TA 3000 AD Elev 74



SPEED: MAX 250kt below FL100.

ALT RESTRICTION: Except INKET 2K: Climb to maintain **FL60** . INKET 2K: Climb to **FL50**.

SID	Routing	Altitudes
(INITIAL CLIMB)	Climb on 215° - at D3 EHV turn right (MAX 220kt) - follow SID. RNAV: THR22 - EH558 - EH556 - follow SID.	D7 EHV/EH556 MNM 3000
INKET 2K	333° - intcp R132 RTM - INKET. RNAV: EH555 - INKET.	
PESER 1K	333° - intcp R106 HSD - BREDA - PESER. RNAV: BREDA - PESER.	PESER at FL60
REFSO 2K	333° - intcp R106 HSD - BREDA - HSD - R279 HSD - REFSO. RNAV: BREDA - HSD - REFSO.	BREDA at FL60
TULIP 2K	333° - intcp R106 HSD - BREDA - HSD - R001 HSD - TULIP. RNAV: BREDA - HSD - TULIP.	BREDA at FL60
WOODY 2K	333° - intcp R106 HSD - BREDA - intcp R078 COA - at D45 COA turn left - intcp R027 NIK - WOODY. RNAV: BREDA - RONSA - WOODY.	BREDA at FL60

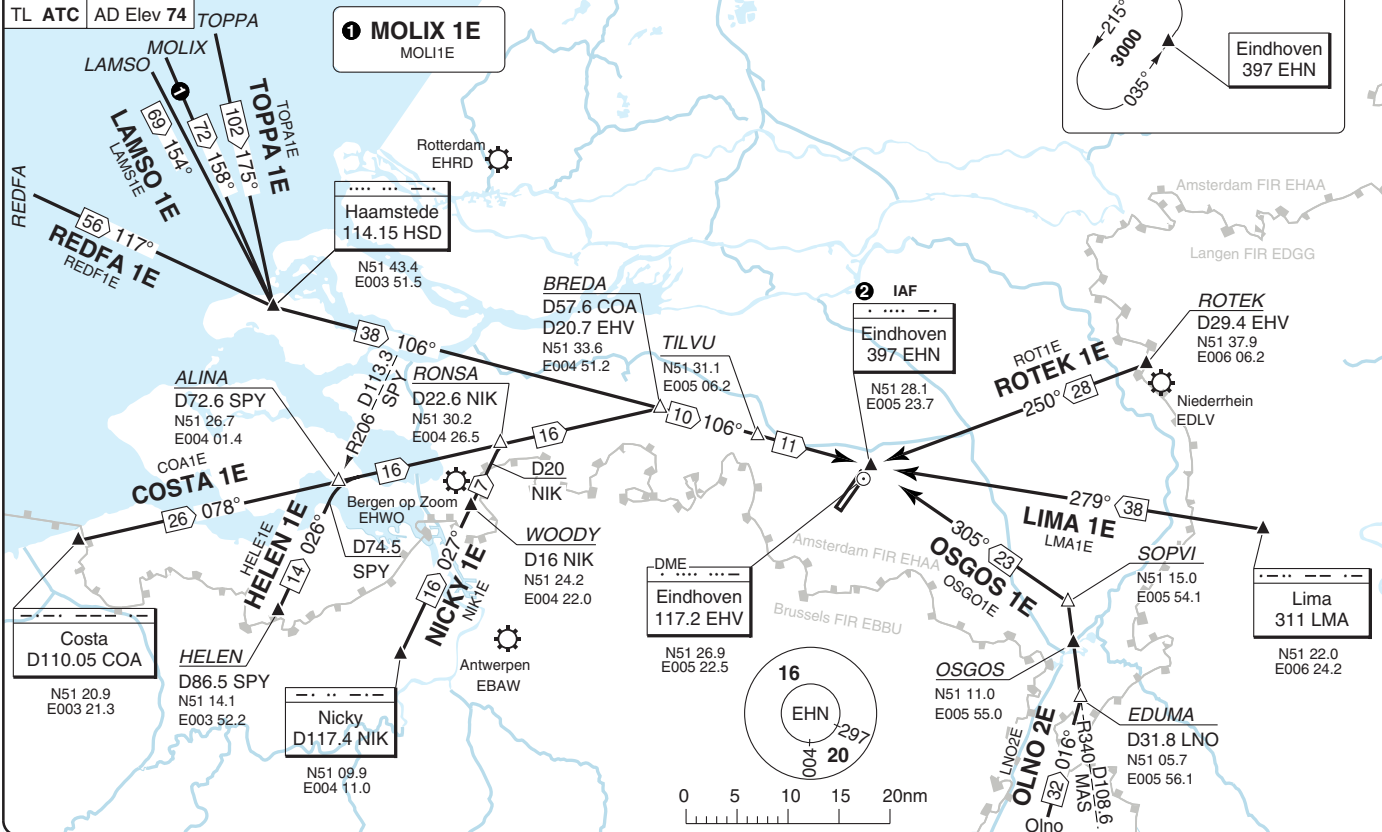
© Navitech - ehnh06daorg0

Change: New spec.

THIS CHART IS A PART OF NAVIGRAPH NDAC AND IS INTENDED FOR FLIGHT SIMULATION USE ONLY

Eindhoven ARR 124.525 122.1	Rapcon South APP 123.175 122.1	Eindhoven TWR 131.0 122.1	GND 121.925	ATIS 126.025
-----------------------------------	--------------------------------------	---------------------------------	----------------	-----------------

SPEED
MAX 250kt below FL100.



STAR 1

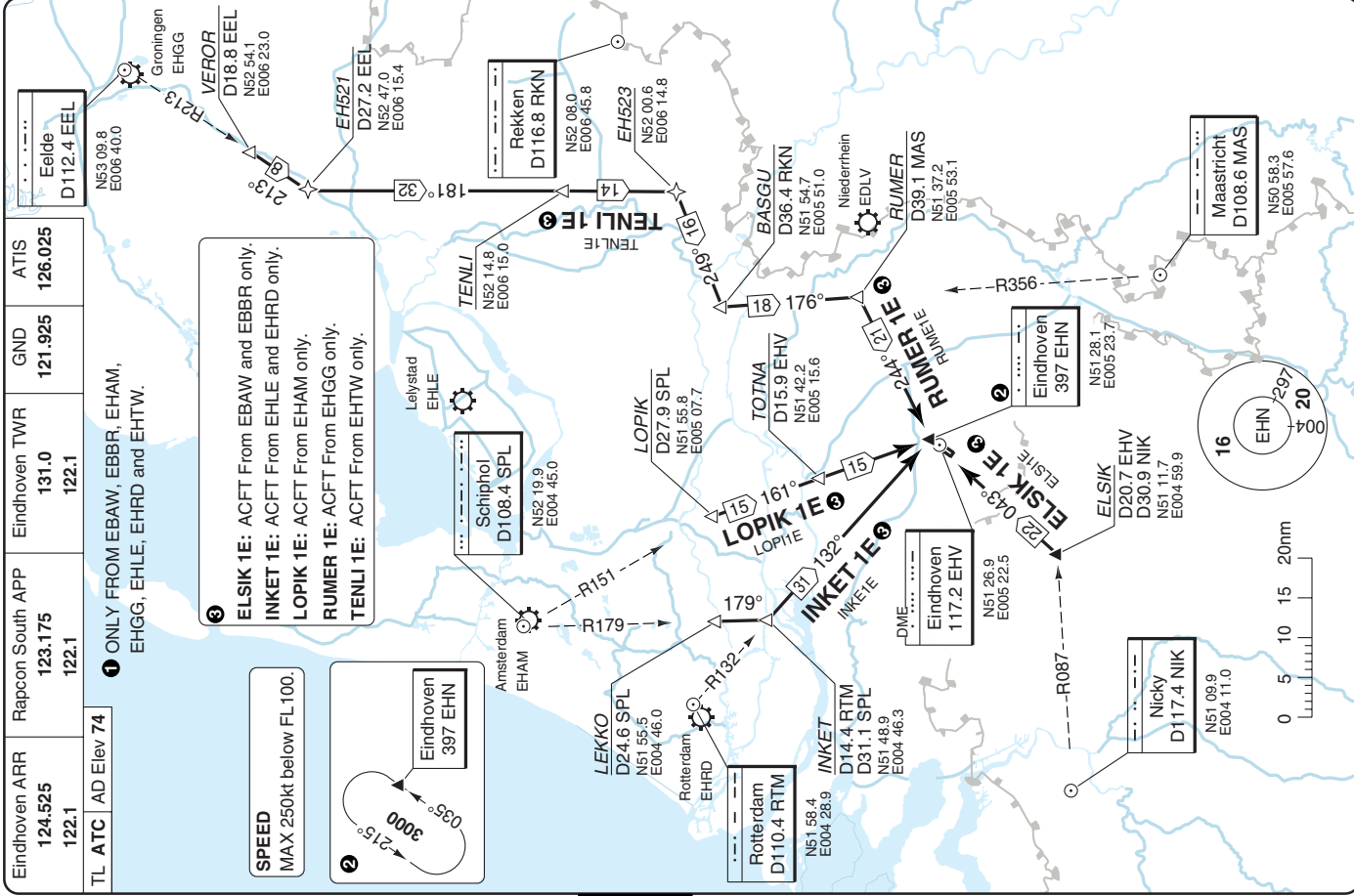
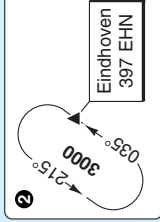
Eindhoven ARR 124.525 122.1	Rapcon South APP 123.175 122.1	Eindhoven TWR 131.0 122.1	GND 121.925	ATIS 126.025
-----------------------------------	--------------------------------------	---------------------------------	----------------	-----------------

TL ATC AD Elev 74

1 ONLY FROM EBAW, EBBR, EHAM, EHGG, EHLE, EHRD and EHTW.

SPEED
MAX 250kt below FL100.

3
ELSIK 1E: ACFT From EBAW and EBBR only.
INKET 1E: ACFT From EHLE and EHRD only.
LOPIK 1E: ACFT From EHAM only.
RUMER 1E: ACFT From EHGG only.
TENLI 1E: ACFT From EHTW only.

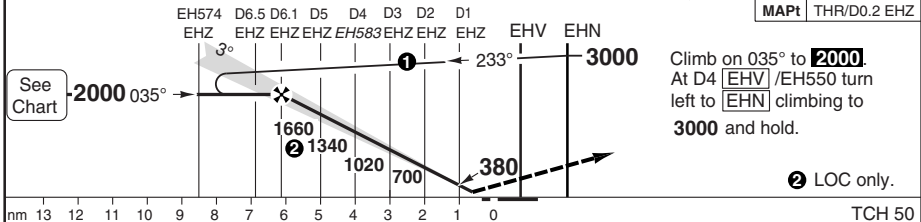
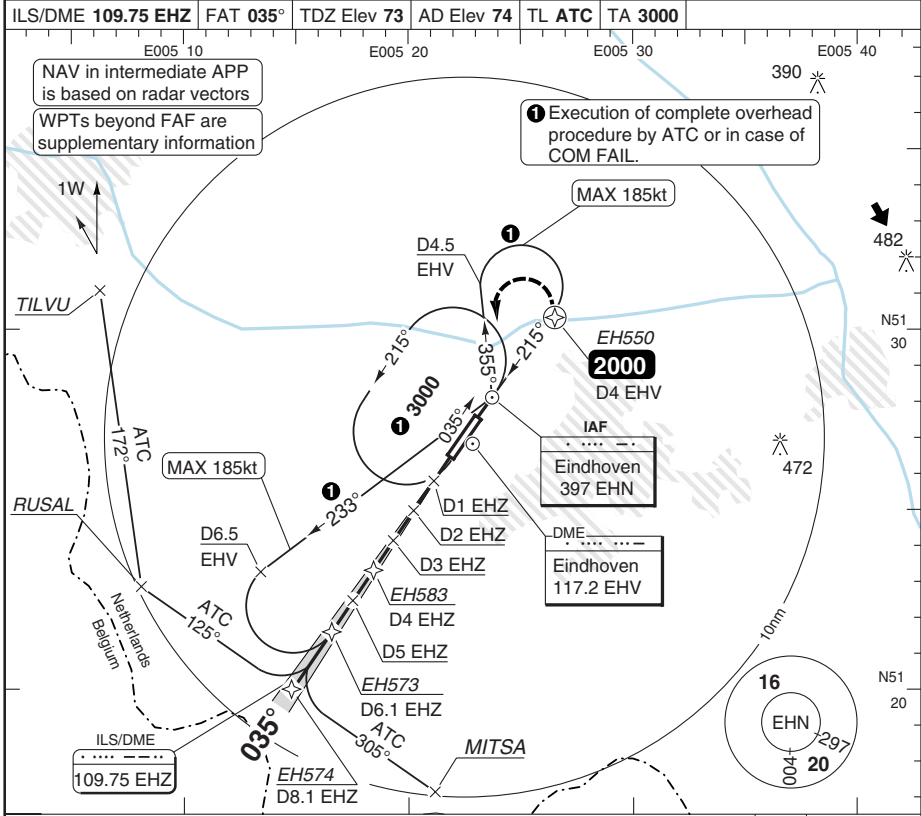


Change: New spec.

ILS Y RWY 04

EINDHOVEN

Rapcon south APP 123.175 122.1	Eindhoven ARR 124.525 122.1	TWR 131.0 122.1	GND 121.925	ATIS 126.025
ILS/DME 109.75 EHZ		FAT 035°	TDZ Elev 73	AD Elev 74
TL ATC		TA 3000		



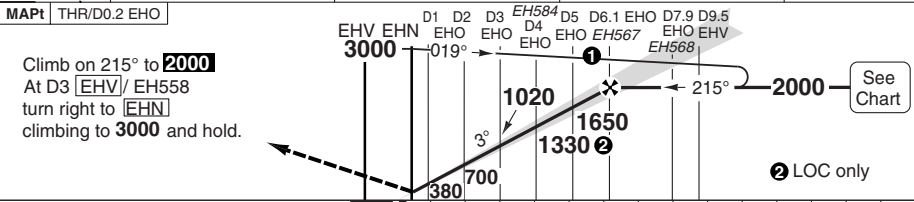
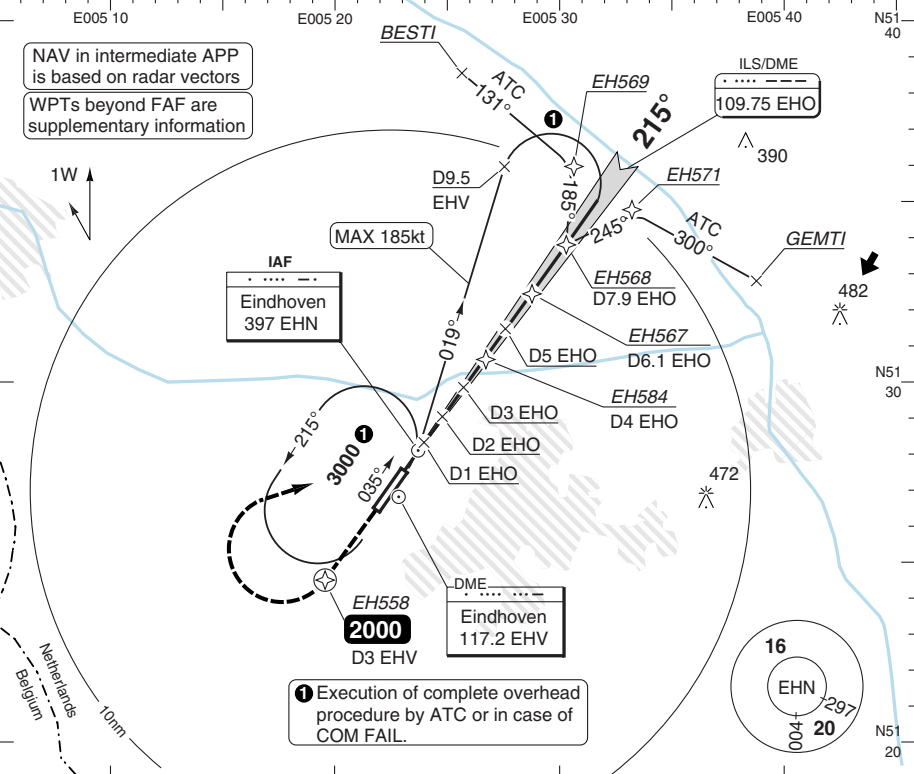
ACFT A B C D	ILS+DME	LOC+DME	Circling			
	280 (200) 550m	420 (350) 900m	NA			
	GS	80	100	120	140	160
	ROD 3.0°	430	530	640	750	850
	DME EHZ 3.0° ALT 6.1 2000 5 1660 4 1340 3 1020 2 700 1 380					

ILS Y RWY 22

EINDHOVEN

Rapcon south APP 123.175 122.1	Eindhoven ARR 124.525 122.1	TWR 131.0 122.1	GND 121.925	ATIS 126.025
--------------------------------------	-----------------------------------	-----------------------	----------------	-----------------

ILS/DME 109.75 EHO	FAT 215°	TDZ Elev 67	AD Elev 74	TL ATC	TA 3000
--------------------	----------	-------------	------------	--------	---------



TCH 50

ACFT	ILS+DME	LOC+DME	Circling
A			
B	270 (200) 550m	500 (440) 1300m	NA
C			
D			

DME EHO	3.0° ALT	LDA 2750x45 9022x147ft P 3° (38)
6	2000	
5	1650	
4	1330	
3	1020	
2	700	
1	380	

GS	80	100	120	140	160
ROD 3.0°	430	530	640	750	850



50 - 2

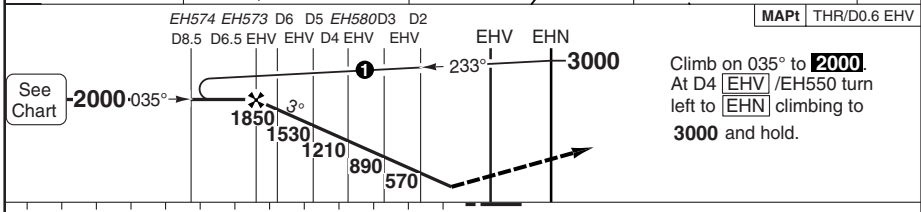
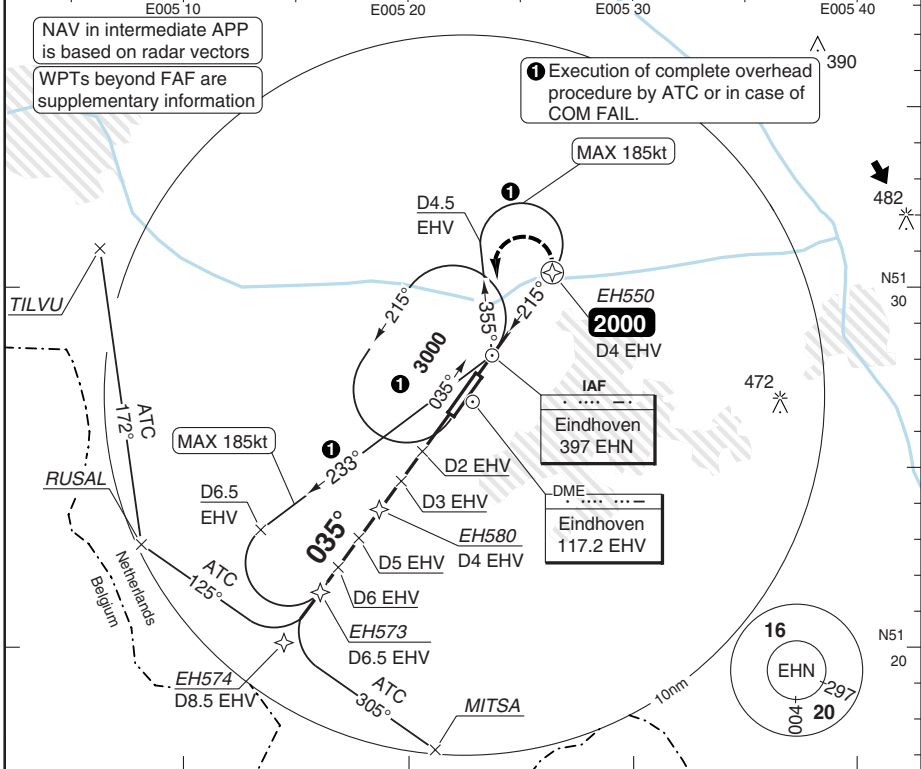
© Navtech - eheh02aip00 EU OPS

NDB RWY 04

EINDHOVEN

Rapcon south APP 123.175 122.1	Eindhoven ARR 124.525 122.1	TWR 131.0 122.1	GND 121.925	ATIS 126.025
---	--	------------------------------	-----------------------	------------------------

NDB 397 EHN	FAT 035°	TDZ Elev 73	AD Elev 74	TL ATC	TA 3000
--------------------	-----------------	--------------------	-------------------	---------------	----------------



nm	12	11	10	9	8	7	6	5	4	3	2	1	0
ACFT	NDB+DME		Circling										
A			NA										
B	490 (420)												
C	1200m												
D													
GS	80	100	120	140	160								
ROD 3.0°	430	530	640	750	850								
FAF-MAPt	4:25	3:32	2:57	2:32	2:13								

DME EHV	3.0° ALT	LDA 2750x45 9022x147ft P 3° (50)
6.5	2000	
6	1850	
5	1530	
4	1210	
3	890	
2	570	
1.8	490	

© Navtech - eheh03aip00

50 - 3

HELICOPTER

EINDHOVEN

The following Minima is for Public Transport Helicopters and conforms to JAR-OPS3 regulations.

STRAIGHT-IN APPROACH

R/W	Procedure	DA/ MDA QNH ft	DH/ MDH QFE ft	Full >=220 RVR m	Inter 420-719 RVR m	Basic < 420 RVR m	No ALS RVR m
04	ILS/DME Y	280	200	500	600	700	1000
04	LOC/DME Y	430	350	800	1000	1000	1000
04	NDB/DME	500	420	800	1000	1000	1000
22	ILS/DME Y	270	200	500	600	700	1000
22	LOC/DME Y	510	440	800	1000	1000	1000
22	NDB/DME	510	440	800	1000	1000	1000

Notes:

CIRCLING

R/W	Procedures	MDA QNH ft	MDH QFE ft	Vis m
Not Authorised				

Not Authorised

Notes: