

Airport information:

Country: United Kingdom

City: CUMBERNAULD

Coordinates: N 55° 58.5', W 003° 58.5'

Elevation: 350

Customs: Customs by arrangement

Fuel: Jet A1, 100LL

RFF: CAT 1

hours: 0900-1700; & by arrangement

Runways:

Runway 08

Takeoff length: 820, Landing length: 820

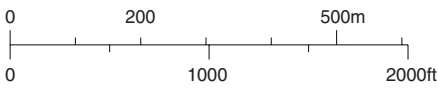
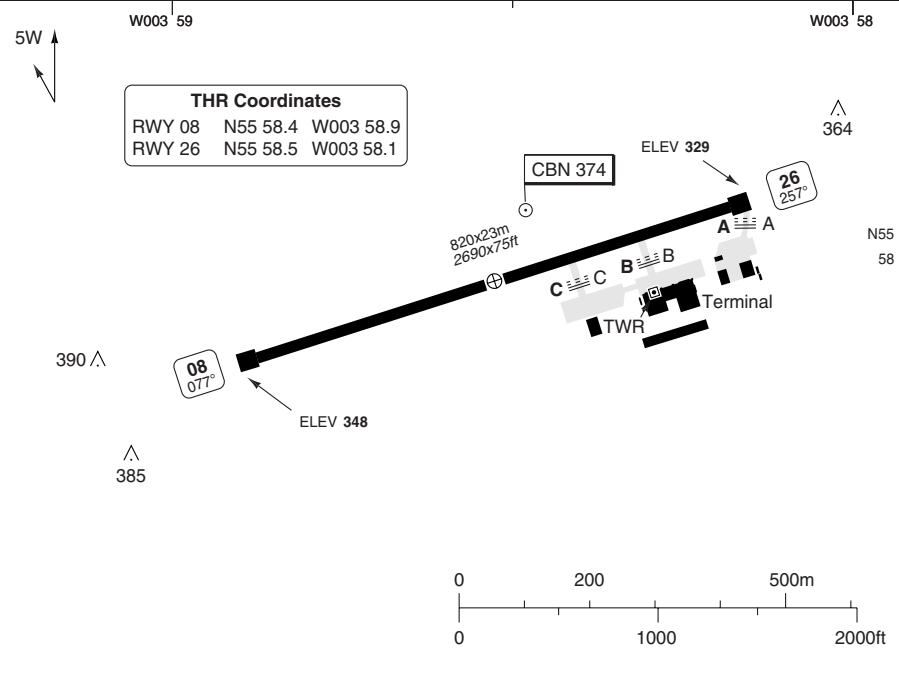
Runway 26

Takeoff length: 820, Landing length: 820

AERODROME

Cumbernauld RADIO
120.6

AD Elev **350** | ARP: N55 58.5 W003 58.5 | RFF: CAT 1 | AD HR: 0900 - 1700 PPR



RWY	Slope	TORA m/ft	LDA m/ft
08	- 0.7	820 / 2690	820 / 2690
26	+ 0.7	820 / 2690	820 / 2690

VISUAL

Cumbernauld RADIO
120.6

AD Elev 350 | TRL ATC | TA 6000

