

Airport information:

Country: Finland

City: MIKKELI

Coordinates: N 61° 41.2', E027 12.0

Elevation: 329

Customs: Customs: PPR

Fuel:

RFF: CAT 5 (O/R 6)

hours: Promulgated by NOTAM. Possible extension operational hours with direct contact to t

Runways:

Runway 11

Takeoff length: 1702, Landing length: 1453

Runway 29

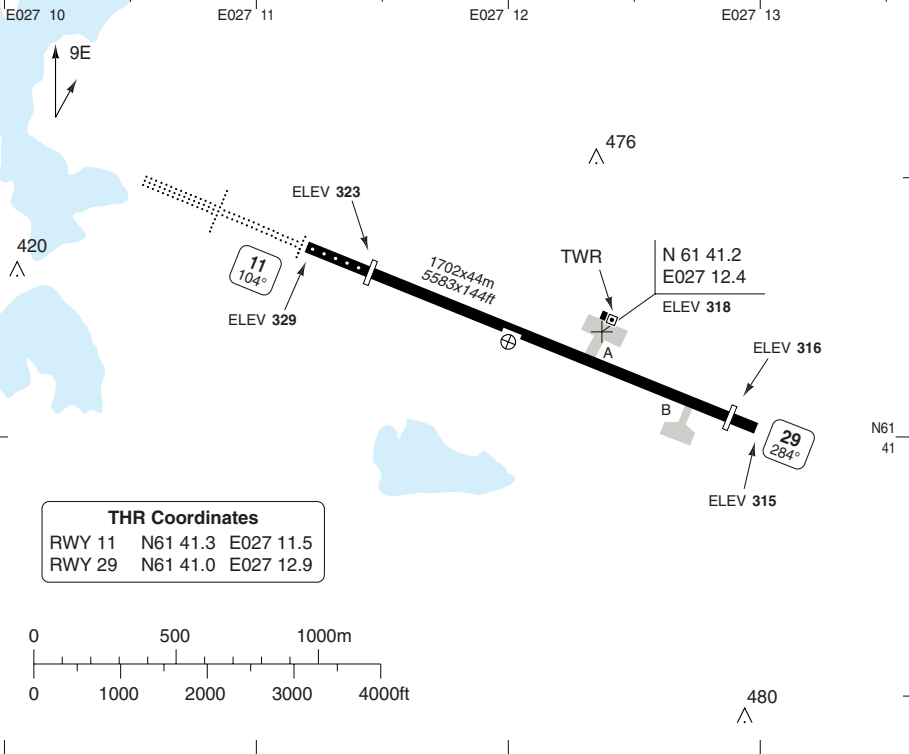
Takeoff length: 1702, Landing length: 1602

AERODROME

Mikkeli AFIS
123.0
119.7

ATIS
118.25

AD Elev **329** | ARP: N61 41.2 E027 12.0 | RFF: CAT 5, CAT 6 O/R | AD HR: See NOTAM



RWY	Slope	TORA m/ft	LDA m/ft	ALS	REDL	Additional
11	-0.1	1702 / 5583	1453 / 4767	H-C ①	H	P 3.5° (41)
29	+0.1	1702 / 5583	1602 / 5255	-	H	P 3.5° (49)

① LIL red

STATE		TAKE OFF MINIMA	
RWY	Facilities	RVR A B C	
11/29	NIL (day only) or RCL (day only) or RCL + REDL	550m	

AERODROME

10 - 2

GENERAL INFORMATION

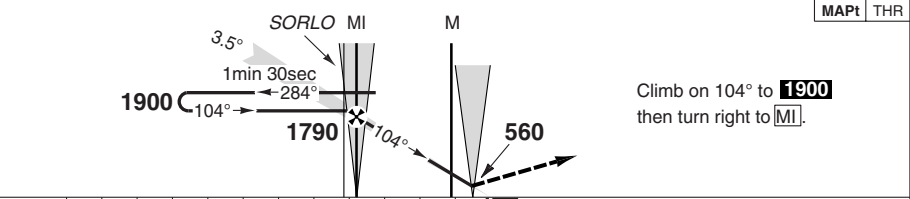
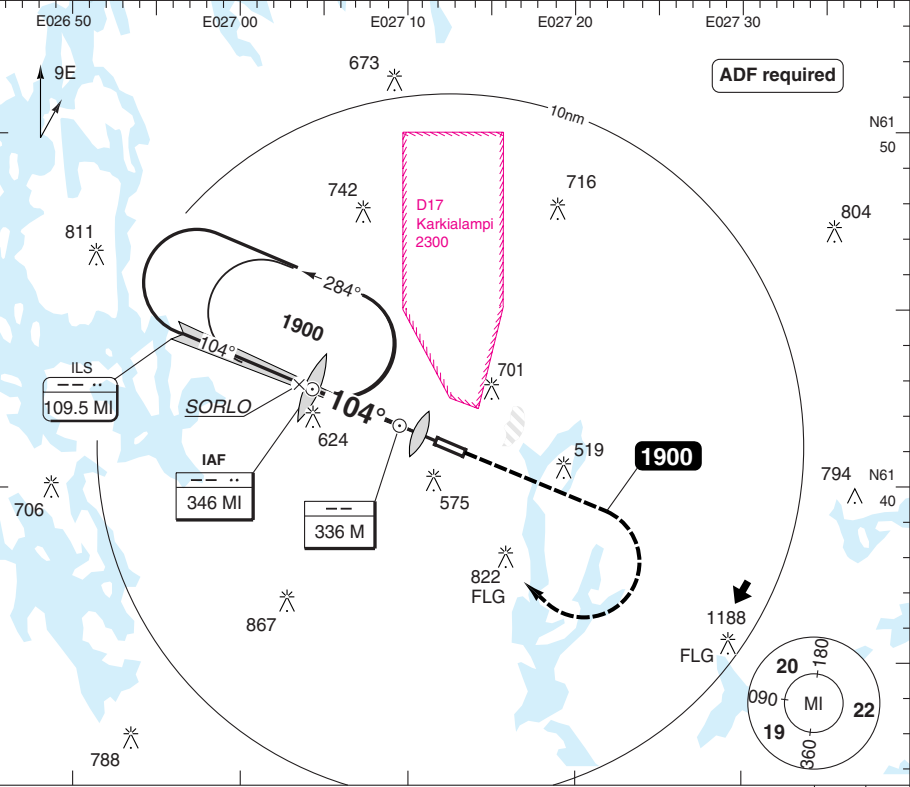
TWY RESTRICTION
TWY B width 15m/49ft.

ILS RWY 11

MIKKELI

Mikkeli AFIS 123.0 119.7	ATIS 118.25
--	-----------------------

ILS 109.5 MI	FAT 104°	DTHR Elev 323	AD Elev 329	TL ATC	TA 5000
---------------------	-----------------	----------------------	--------------------	---------------	----------------



nm	12	11	10	9	8	7	6	5	4	3	2	1	0	TCH 38
----	----	----	----	---	---	---	---	---	---	---	---	---	---	--------

ACFT	ILS	LOC	Circling ^a
A	550 (219) 550m	830 (500) 1500m	870 (550) 1.5km
B	550 (226) 550m		870 (550) 1.6km
C	560 (235) 550m		1220 (890) 2.4km
D	NA	NA	NA

GS	80	100	120	140	160
ROD 3.5°	500	630	750	880	1000
FAF +20s	1630	1590	1550	1500	1460
+40s	1460	1380	1300	1210	1130
+60s	1300	1170	1050	920	-
FAF- 830	1:55	1:32	1:17	1:06	0:58
FAF-MAPt	2:51	2:17	1:54	1:37	1:25

LDA 1453x44 4767x144ft P 3.5° (41)
--

^a South of AD.

Change: SORLO, MSA, Profile, FAT, DESIGNATOR, Min

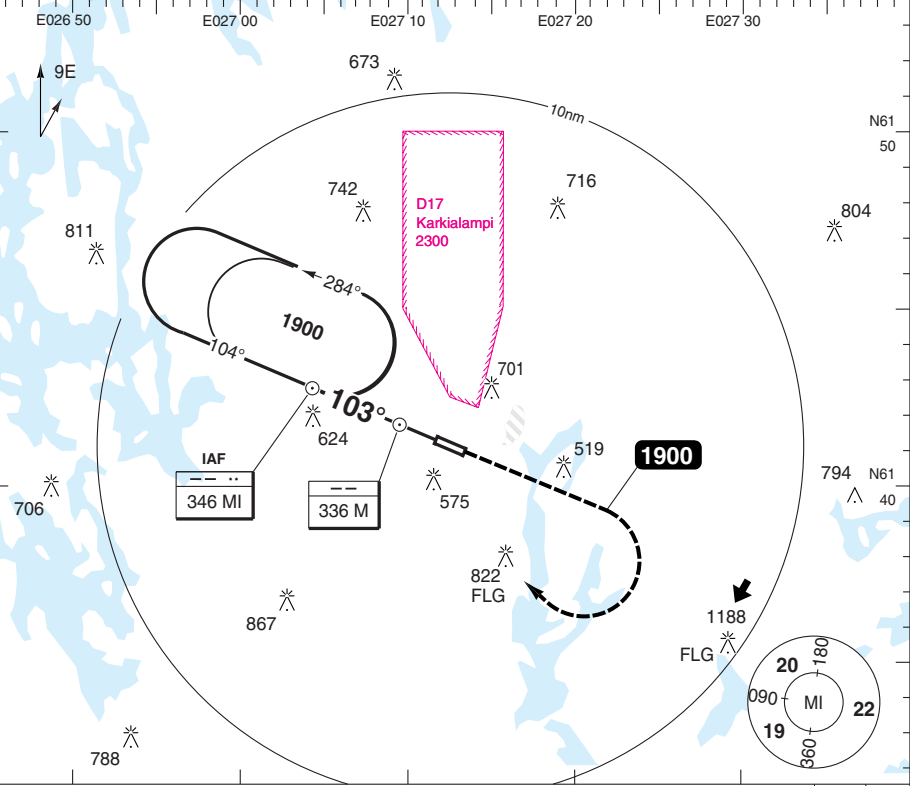
THIS CHART IS A PART OF NAVIGRAPH NDAC AND IS INTENDED FOR FLIGHT SIMULATION USE ONLY

NDB RWY 11

MIKKELI

Mikkeli AFIS 123.0 119.7	ATIS 118.25
--	-----------------------

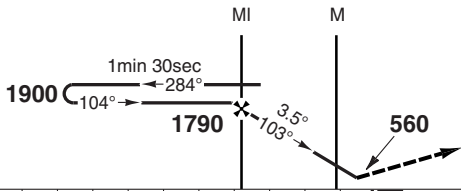
NDB 346 MI	FAT 103°	DTHR Elev 323	AD Elev 329	TL ATC	TA 5000
-------------------	-----------------	----------------------	--------------------	---------------	----------------



PANS OPS

50 - 2

MAPt THR



Climb on 103° to **1900**
then turn right to **MI**.

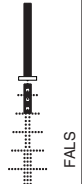
nm	12	11	10	9	8	7	6	5	4	3	2	1	0	TCH 38
----	----	----	----	---	---	---	---	---	---	---	---	---	---	--------

ACFT	NDB	Circling ^a
A	870 (550) 1500m	870 (550) 1.5km
B		870 (550) 1.6km
C	870 (550) 1800m	1220 (890) 2.4km
D	NA	NA

^a South of AD.

GS	80	100	120	140	160
ROD 3.5°	500	630	750	880	1000
FAF +20s	1630	1590	1550	1500	1460
+40s	1460	1380	1300	1210	1130
+60s	1300	1170	1050	920	-
FAF- 870	1:51	1:29	1:14	1:03	0:55
FAF-MAPt	2:51	2:17	1:54	1:37	1:25

LDA 1453x44
4767x144ft
P 3.5° (41)



© Navtech - efm02iaip00

Change: Completely revised

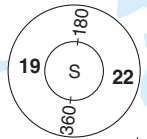
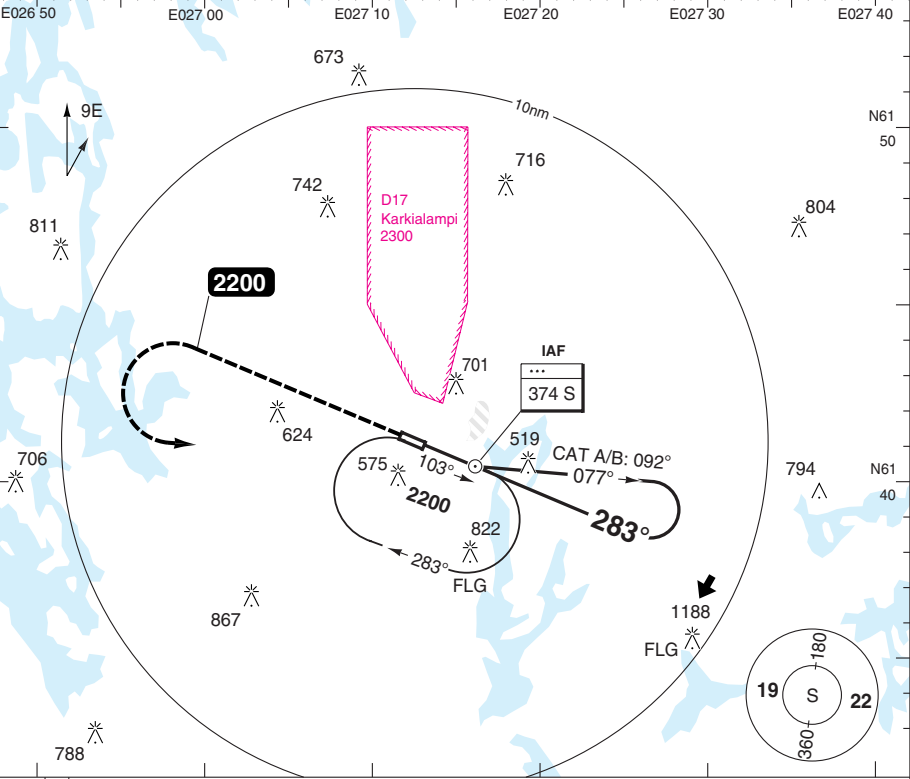
THIS CHART IS A PART OF NAVGRAPH NDAC AND IS INTENDED FOR FLIGHT SIMULATION USE ONLY

NDB RWY 29

MIKKELI

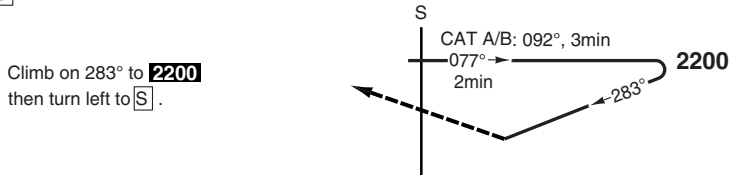
Mikkeli AFIS 123.0 119.7	ATIS 118.25
--	-----------------------

NDB 374 S	FAT 283°	DTHR Elev 316	AD Elev 329	TL ATC	TA 5000
------------------	-----------------	----------------------	--------------------	---------------	----------------



50 - 3

MAPt S



0 1 2 3 4 5 6 7 8 9 10 11 12 nm

ACFT	NDB	NDB a	Circling b	Circling a b
A	1090 (770) 3600m	1090 (770) 3800m	1100 (770) 3.6km	1100 (770) 3.8km
B		1090 (770) 4000m	1220 (890) 3.6km	1220 (890) 4.0km
C	NA	NA	NA	NA
D	NA	NA	NA	NA

a Non CDFA
b South of AD.

LDA 1602x44
5255x144ft
P 3.5° (49)



NALS

© Navtech - efmt03iaip00

Change: Min, FAT, Renumbered

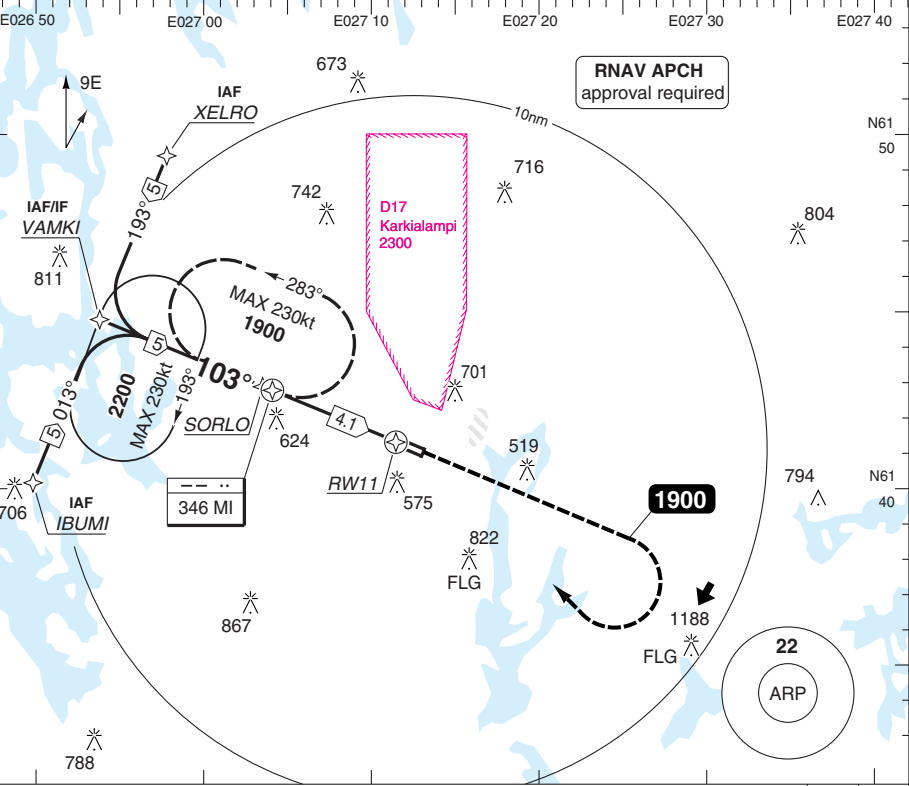
THIS CHART IS A PART OF NAVIGRAPH NDAC AND IS INTENDED FOR FLIGHT SIMULATION USE ONLY

RNAV (GNSS) RWY 11

MIKKELI

Mikkeli AFIS 123.0 119.7	ATIS 118.25
--	-----------------------

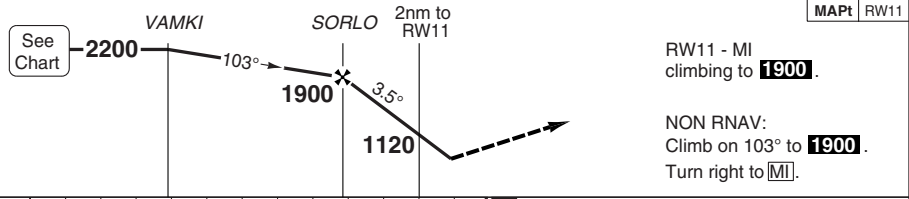
RNAV	FAT 103°	DTHR Elev 323	AD Elev 329	TL ATC	TA 5000
------	-----------------	----------------------	--------------------	---------------	----------------



RNAV APCH
approval required

PANS OPS

50 - 4



RW11 - MI climbing to **1900**.
NON RNAV:
Climb on 103° to **1900**.
Turn right to **[M]**.

nm 13	12	11	10	9	8	7	6	5	4	3	2	1	0	TCH 38
-------	----	----	----	---	---	---	---	---	---	---	---	---	---	--------

ACFT	LNAV
A	790 (460) 1400m
B	
C	
D	NA

Note: Circling NA

THR	3.5°	LDA 1453x44 4767x144ft P 3.5° (41)
11	ALT	
4.9	2200	
4	1870	
3	1500	
2	1120	
1.1	790	



GS	80	100	120	140	160
ROD 3.5°	500	630	750	880	1000

© Navtech - efmt04iap00
EU OPS

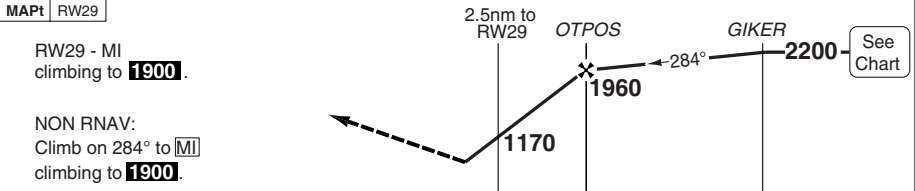
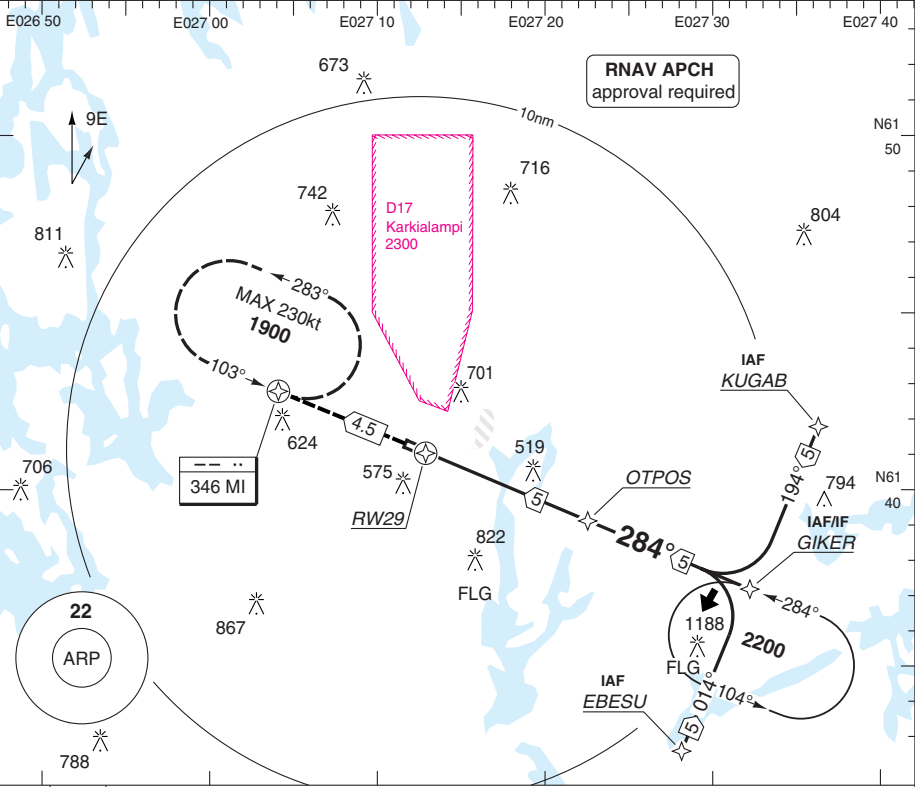
Change: New

RNAV (GNSS) RWY 29

MIKKELI

Mikkeli AFIS 123.0 119.7	ATIS 118.25
--	-----------------------

RNAV	FAT 284°	DTHR Elev 316	AD Elev 329	TL ATC	TA 5000
------	-----------------	----------------------	--------------------	---------------	----------------



TCH 50	0	1	2	3	4	5	6	7	8	9	10	11	12	13nm
--------	---	---	---	---	---	---	---	---	---	---	----	----	----	------

ACFT	LNAV
A	770 (450) 1500m
B	
C	770 (450) 2100m
D	NA

Note: Circling NA

THR	3.0° ALT
29	
5.7	2200
5	1980
4	1660
3	1330
2	1010
1.3	770

LDA 1602x44
5255x144ft
P 3.5° (49)



NALS

GS	80	100	120	140	160
ROD 3.0°	430	540	650	760	860

Change: New

JAR-OPS Landing Minima

MIKKELI

The following Minima is for Public Transport aircraft and conforms to JAR-OPS1 regulations.

STRAIGHT-IN APPROACH		C				D			
R/W	Procedure	DA/ MDA QNH ft	DH/ MDH QFE ft	RVR m	RVR No ALS m	DA/ MDA QNH ft	DH/ MDH QFE ft	RVR m	RVR No ALS m
11	ILS	560	240	600	1000	N/A	N/A	N/A	N/A
11	LLZ	830	500	1200	2000	N/A	N/A	N/A	N/A
11	NDB (1)	880	550	1200	2000	N/A	N/A	N/A	N/A
29	NDB	1090	770	2000	N/A	N/A	N/A	N/A	N/A

Notes:

(1) Procedure based on aerodrome elevation.

CIRCLING		C			D		
R/W	Procedure	MDA QNH ft	MDH QFE ft	Vis m	MDA QNH ft	MDH QFE ft	Vis m
11	All procs (1)	1220	890	2400	N/A	N/A	N/A
29	NDB (1)	1220	890	2400	N/A	N/A	N/A

Notes:

(1) Prohibited North of aerodrome.

TAKE-OFF		C		D	
Runway	Facilities	RVR	Vis	RVR	Vis
11/29	-	550	-	N/A	N/A

Notes:

JAR-OPS Landing Minima

MIKKELI

The following Minima is for Public Transport aircraft and conforms to JAR-OPS1 regulations.

STRAIGHT-IN APPROACH		A				B			
R/W	Procedure	DA/ MDA QNH ft	DH/ MDH QFE ft	RVR m	RVR No ALS m	DA/ MDA QNH ft	DH/ MDH QFE ft	RVR m	RVR No ALS m
11	ILS	550	230	600	1000	560	230	600	1000
11	LLZ	830	500	1000	1500	830	500	1200	1500
11	NDB (1)	880	550	1000	1500	880	550	1200	1500
29	NDB	1090	770	1500	N/A	1090	770	1500	N/A

Notes:

(1) Procedure based on aerodrome elevation.

CIRCLING		A			B		
R/W	Procedure	MDA QNH ft	MDH QFE ft	Vis m	MDA QNH ft	MDH QFE ft	Vis m
11	All procs (1)	880	550	1500	880	550	1600
29	NDB (1)	1090	760	1500	1090	760	1600

Notes:

(1) Prohibited North of aerodrome.

TAKE-OFF		A		B	
Runway	Facilities	RVR	Vis	RVR	Vis
11/29	-	550	-	550	-

Notes: