

## Airport information:

Country: Germany

City: KASSEL

Coordinates: N 51° 24.5', E009 22.7

Elevation: 908

Customs:

Fuel: 100LL, Jet A1

RFF: CAT 4. CAT 5/6 O/R

hours: AD: MON-FRI 0630-1930. SAT, SUN, HOL 0800-1730 other times PPR. ATS: MON-FRI

## Runways:

Runway 04

Takeoff length: 1500, Landing length: 1500

Runway 22

Takeoff length: 1500, Landing length: 1410

Kassel TWR 118.1	Bremen RAD 126.65
---------------------	----------------------

AD Elev 908	ARP: N51 24.5 E009 22.7	RRF: CAT 4, CAT 5, 6 O/R	AD HR: MON-FRI 0630-1930
-------------	-------------------------	--------------------------	--------------------------

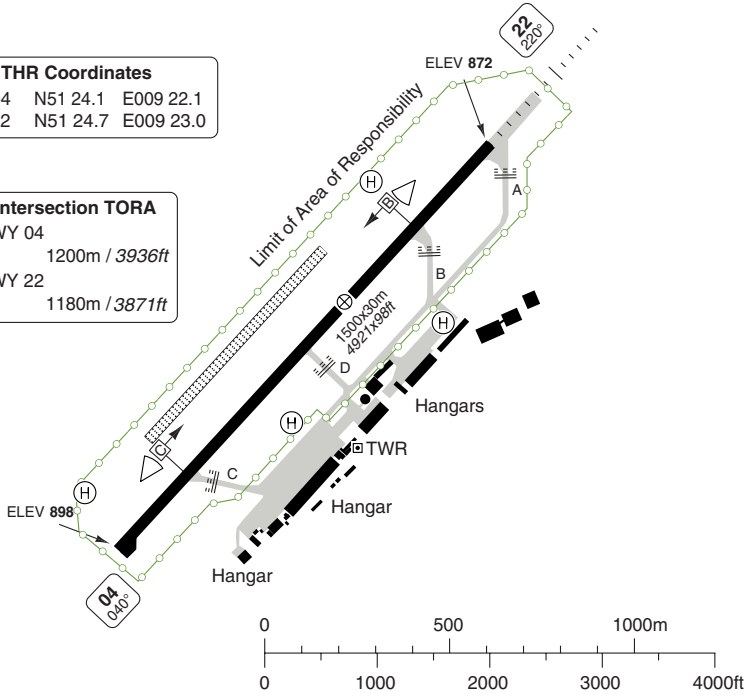


**THR Coordinates**

RWY 04	N51 24.1	E009 22.1
RWY 22	N51 24.7	E009 23.0

**Intersection TORA**

RWY 04	
ⓐ	1200m / 3936ft
RWY 22	
ⓑ	1180m / 3871ft



RWY	Slope	TORA m/ft	LDA m/ft	ALS	REDL	Additional
04	-0.5	1500 / 4921	1500 / 4921	- ①	H ②	-
22	+0.5	1500 / 4921	1410 / 4625	H-D	H ②	P 3° (31)

① 300m, EFAS. ② White.

EU OPS		TAKE OFF MINIMA	
RWY	Facilities	RVR A B C D	
04/22	RCL (day only) or RCL + REDL	400m	
	NIL (day only)	500m	

© Navitech - edvk01aorg0

Change: New spec.

**THIS CHART IS A PART OF NAVIGRAPH NDAC AND IS INTENDED FOR FLIGHT SIMULATION USE ONLY**

## AERODROME

10 - 2

## GENERAL

1. **SPEED**  
MAX 250kt below FL100.
2. **TWY RESTRICTION**  
TWY A, B and C width 15m/49ft.
3. **SID RWY 22**  
SID (WRB 3K) for RWY 22 avbl on PPR basis only. For further information contact LBA (Luftfahrt-Bundesamt).

## ARRIVAL

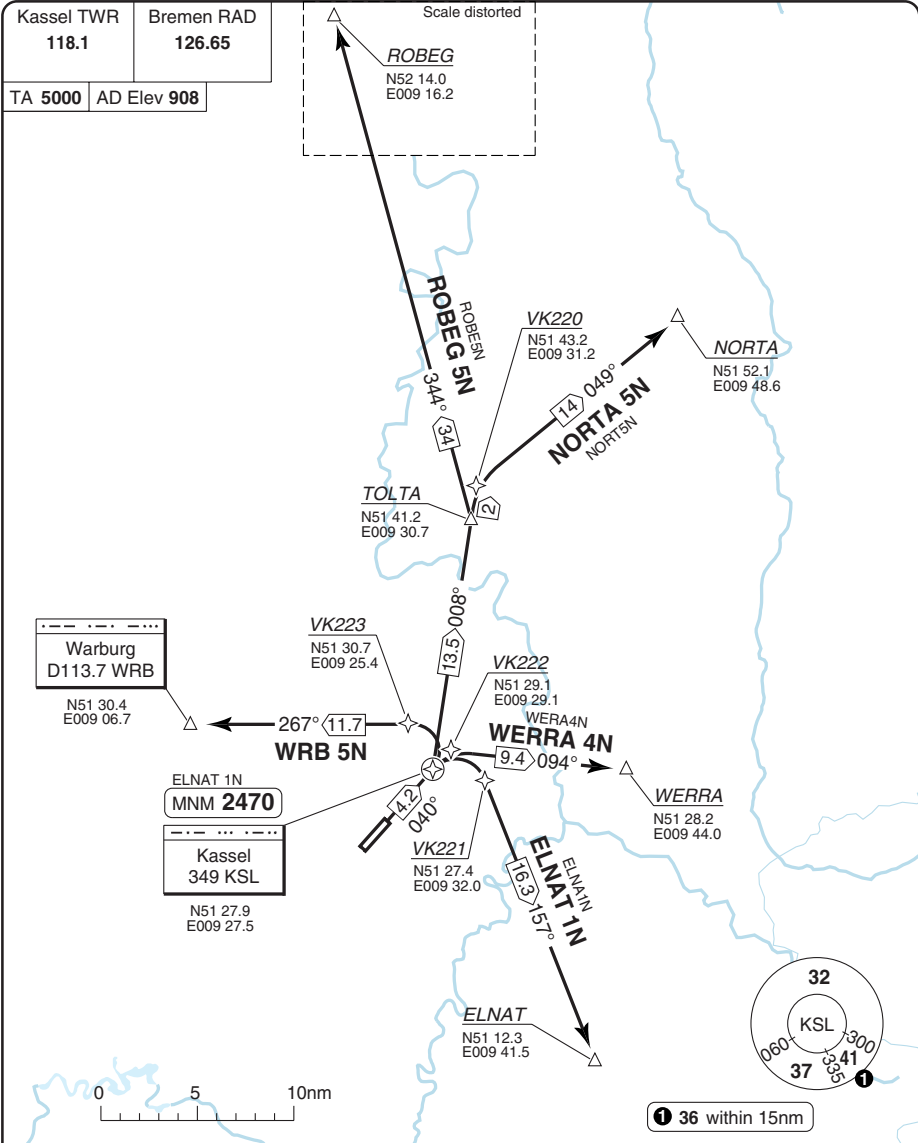
1. **NOISE ABATEMENT PROCEDURE**
  - 1.1. Arrange flight to leave IAF at a speed which permits OPS in clean configuration. Maintain speed until 12nm from TDP. 210kt +/- 10kt. recommended.
  - 1.2. Recommended 160kt +/- 10kt to OM with intermediate flap setting. This phase will normally include the transition from level flight to descent on the glide path which should be intercepted at a height of not lower than 3000ft above touchdown zone elevation.
  - 1.3. Landing configuration should be established shortly prior to or over the OM.

## DEPARTURE

1. **NOISE ABATEMENT PROCEDURES**
  - 1.1. Noise certified ACFT in accordance with ICAO Annex 16, Chapter 2:
    - a) TKOF to 1500ft GND
      - take-off power
      - take-off flaps
      - climb at V2+10kt (or as limited by angle of attack)
    - b) At 1500ft GND
      - reduce power to not less than climb power
    - c) From 1500ft GND to 3000ft GND
      - climb at V2+10kt
    - d) At 3000ft GND
      - acceleration during climb and retraction of flaps.
        - normal transition to enroute climb
  - 1.2. Noise certified ACFT in accordance with ICAO Annex 16, Chapter 3:
    - a) TKOF to 1500ft GND
      - take-off power
      - take-off flaps
      - climb at V2+10kt
    - b) At 1500ft GND
      - reduce power to not less than climb power
      - acceleration during climb and retraction of flaps.
        - normal transition to enroute climb

SID RWY 04 **RNAV** GPS/FMS Overlay

**KASSEL CALDEN**



30 - 1

**COM:** CTC Bremen RAD 126.65 after TKOF.

**ALT RESTRICTION:** Climb to **5000**.

SID	MNM Climb	Routeing	Altitudes
ELNAT 1N	6.2% to 4800	Climb on 040° - KSL - VK221 - ELNAT.	KSL MNM 2470
NORTA 5N		Climb on 040° - KSL - VK220 - NORTA.	
ROBEG 5N		Climb on 040° - KSL - TOLTA - ROBEG.	
WERRA 4N	5.6% to 2300	Climb on 040° - KSL - VK222 - WERRA.	
WRB 5N		Climb on 040° - KSL - VK223 - WRB.	

Change: New spec.

© Navtech - edvk01daorg0

**SID RWY 04**

Kassel TWR 118.1	Bremen RAD 126.65
TA 5000	AD Elev 908

Scale distorted

**ROBEG**  
 N52 14.0  
 E009 16.2

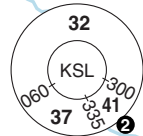
**1 BRNAV EQPT required:**  
 ROBEG 5N: After TOLTA.  
 ELNAT 1N: After passing 4800ft.

30 - 2

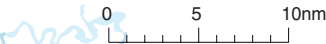
Warburg  
 D113.7 WRB  
 N51 30.4  
 E009 06.7

ELNAT 1N  
**MNM 2470**  
 Kassel  
 349 KSL  
 N51 27.9  
 E009 27.5

DME  
 Kassel  
 108.9 KSL  
 N51 27.9  
 E009 27.4



**1 36** within 15nm



**COM:** CTC Bremen RAD 126.65 after TKOF.

**ALT RESTRICTION:** Climb to **5000**.

SID	MNM Climb	Routeing	Altitudes
ELNAT 1N <b>1</b>	6.2% to 4800	Climb on 040° to KSL - turn right - 157° - ELNAT.	KSL MNM 2470
NORTA 5N		Climb on 040° to KSL - 008° from KSL - at D14.4 KSL turn right - intcp R049 WRB - NORTA.	
ROBEG 5N <b>1</b>		Climb on 040° to KSL - 008° from KSL - TOLTA - turn left - 344° - ROBEG.	
WERRA 4N	5.6% to 2300	Climb on 040° via KSL - intcp R094 WRB - WERRA.	
WRB 5N		Climb on 040° to KSL - turn left - 267°/R087 WRB - WRB.	

© Navitech - edvk02daorg0

Change: New spec.

**THIS CHART IS A PART OF NAVIGRAPH NDAC AND IS INTENDED FOR FLIGHT SIMULATION USE ONLY**

# STAR

Bremen RAD 126.65	Kassel TWR 118.1
----------------------	---------------------

TL ATC	AD Elev 908
--------	-------------

**1** BRNAV EQPT required:  
BTN ROBEG and TOLTA.

**2** WRB is IAF only if determined  
by BREMEN RADAR.

**2** IAF  
Warburg  
D113.7 WRB  
N51 30.4  
E009 06.7

**3**  
Kassel  
349 KSL  
027° MAX 5000  
207° MAX 4000  
MAX 170kt

ROBEG  
N52 14.0  
E009 16.2

Leine  
D115.2 DLE  
N52 15.0  
E009 53.0

ROBEG 5A  
ROBESA  
5000  
34 163°

TOLTA  
D14 KSL  
N51 41.2  
E009 30.8

NORTA 4A  
WRB  
5000  
28 207°

NORTA  
D23 DLE  
D47 HLZ  
N51 52.1  
E009 48.6

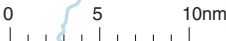
WRB 4B  
13 099°  
5000  
067°  
247°

**3** IAF  
Kassel  
349 KSL  
N51 27.9  
E009 27.5

DME  
Kassel  
108.9 KSL  
N51 27.9  
E009 27.4

ELNAT 1A  
ELNAT A  
5000  
330° 18  
ELNAT  
N51 12.3  
E009 41.5

32  
KSL  
060 300  
37 33.41  
4



**1** 36 within 15nm

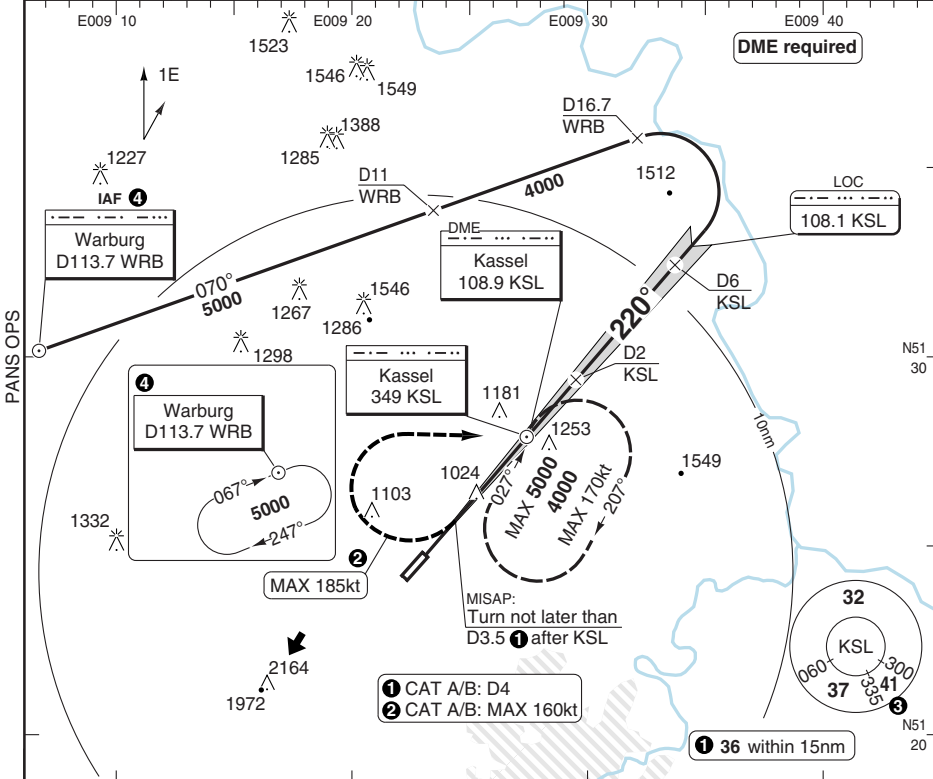
Change: New spec.

**THIS CHART IS A PART OF NAVIGRAPH NDAC AND IS INTENDED FOR FLIGHT SIMULATION USE ONLY**

**LOC Y RWY 22**

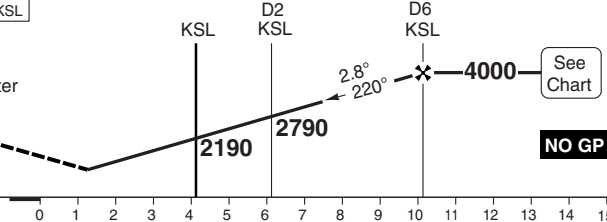
Bremen RAD 126.65  
 Kassel TWR 118.1

LOC 108.1 KSL | FAT 220° | THR Elev 872 | AD Elev 908 | TL ATC | TA 5000



**MAPt** D2.5 (CAT A/B: D3) after KSL

Turn right (MAX 185kt ②) not later than D3.5 (①) after [KSL] to NDB [KSL], climbing to **4000**.



ACFT	LOC+DME	Note: Special authorisation required for CAT C/D. Circling NA
A	1270 (400) 1.5km	
B		
C		
D		

Note: Special authorisation required for CAT C/D. Circling NA

DME KSL	2.8° ALT	LDA 1410x30 4625x98ft P 3° (31)
6	<b>4000</b>	
4	<b>3400</b>	
2	<b>2800</b>	
1	<b>2500</b>	
0	<b>2190</b>	
1	<b>1890</b>	
2	<b>1590</b>	
3.0	<b>1270</b>	

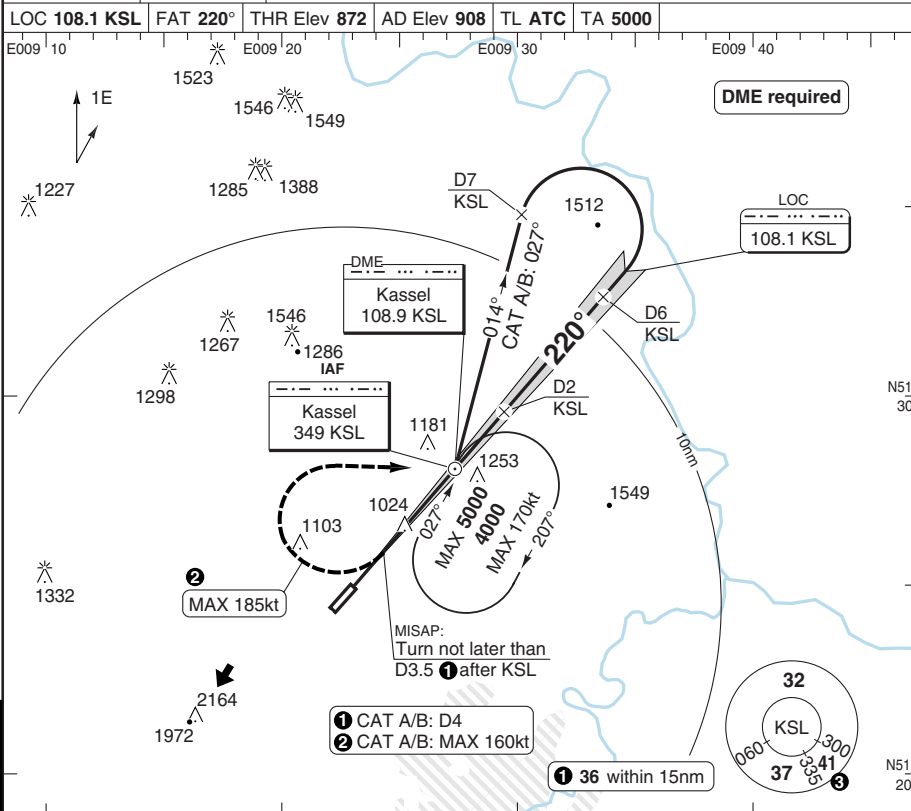
GS	80	100	120	140	160
ROD 2.8°	410	510	610	710	810

Change: New spec.

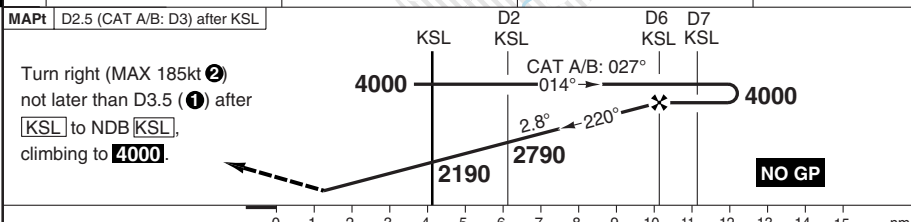
# LOC Z RWY 22

# KASSEL CALDEN

Bremen RAD 126.65	Kassel TWR 118.1				
LOC 108.1 KSL	FAT 220°	THR Elev 872	AD Elev 908	TL ATC	TA 5000



50 - 2



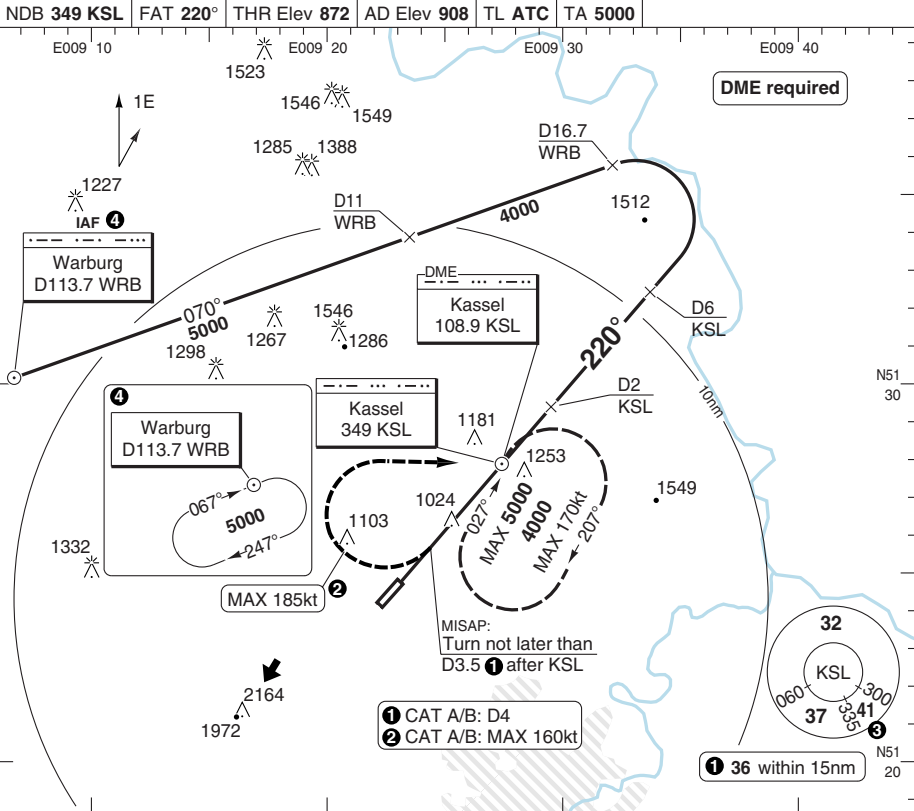
ACFT	LOC+DME	Note: Special authorisation required for CAT C/D. Circling NA	DME KSL	2.8° ALT	LDA 1410x30 4625x98ft P 3° (31)
A	1270 (400) 1.5km		6	4000	IALS
B			4	3400	
C			2	2800	
D			1	2500	
		0	2190		
		1	1890		
		2	1590		
		3.0	1270		

Change: New spec.

© Navtech - edvk02aip00

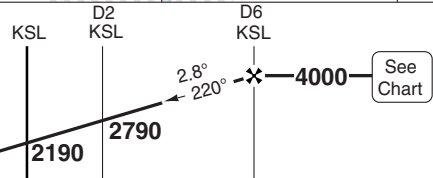
**NDB Y RWY 22**

Bremen RAD 126.65	Kassel TWR 118.1				
NDB 349 KSL	FAT 220°	THR Elev 872	AD Elev 908	TL ATC	TA 5000



MAP: D2.5 (CAT A/B: D3) after KSL

Turn right (MAX 185kt ②)  
 not later than D3.5 (①) after  
 [KSL] to NDB [KSL],  
 climbing to **4000**.



0 1 2 3 4 5 6 7 8 9 10 11 12 13 14 15 nm

ACFT	<b>NDB+DME</b>	Note: Special authorisation required for CAT C/D. Circling NA
A		
B	1270 (400)	
C	1.5km	

DME	2.8°	LDA 1410x30
KSL	ALT	4625x98ft
6	4000	P 3° (31)
4	3400	
2	2800	
1	2500	
0	2190	
1	1890	
2	1590	
3.0	1270	

GS	80	100	120	140	160
ROD 2.8°	410	510	610	710	810

Change: New spec.

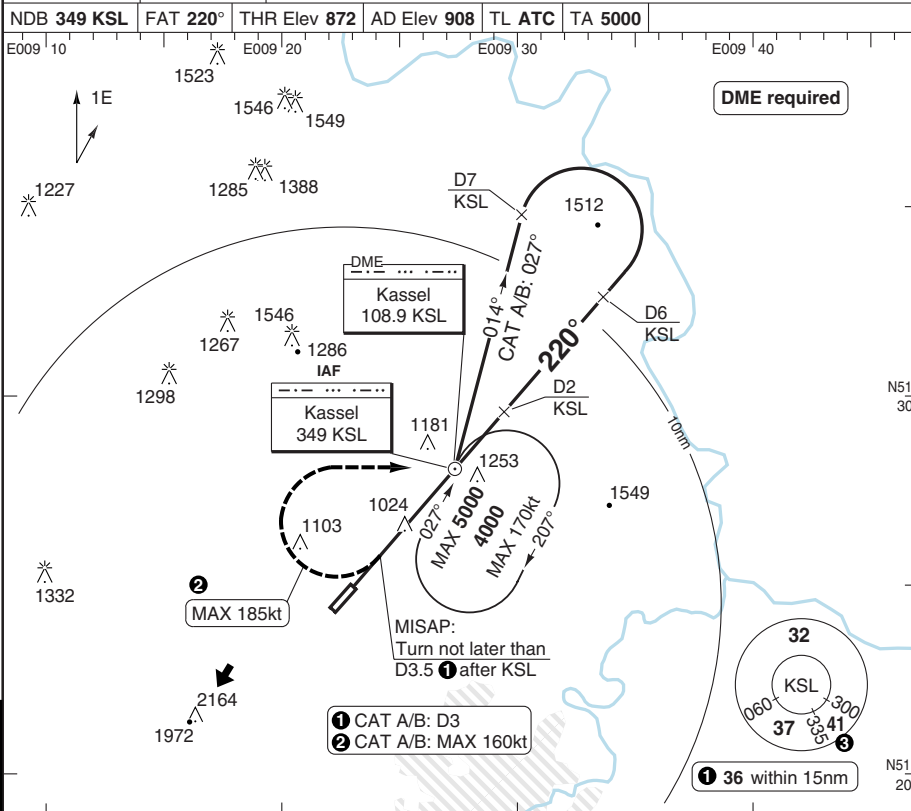
© Navtech - edvko3iaip00

50 - 3

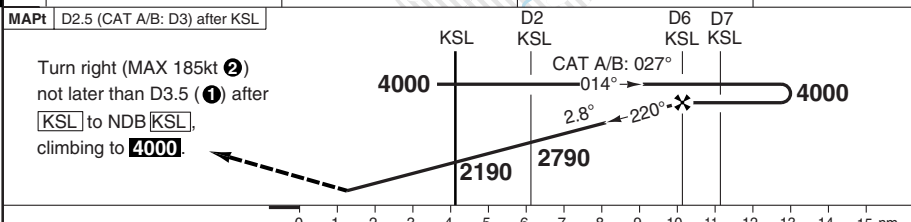
# NDB Z RWY 22

# KASSEL CALDEN

Bremen RAD 126.65	Kassel TWR 118.1				
NDB 349 KSL	FAT 220°	THR Elev 872	AD Elev 908	TL ATC	TA 5000



50 - 4



ACFT	<b>NDB+DME</b>	<b>Note:</b> Special authorisation required for CAT C/D. Circling NA					DME KSL	2.8° ALT	LDA 1410x30 4625x98ft P 3° (31)	
A	1270 (400) 1.5km						6	4000		
B							4	3400		
C							2	2800		
D							1	2500		
		GS	80	100	120	140	160	1		1890
		ROD 2.8°	410	510	610	710	810	2		1590
							3.0	1270	IALS	

© Navtech - edvk04iap00

Change: New spec.