

Airport information:

Country: Germany

City: ZWEIBRÜCKEN

Coordinates: N 49° 12.6', E007 24.1

Elevation: 1132

Customs: Customs: PPR 24 HR, for SAT, SUN, HOL requested on last working day

Fuel: 100LL, Jet A1

RFF: CAT 7. Higher CAT up to CAT 9 O/R.

hours: MON-FRI 0700-2100, SAT, SUN, HOL 0800-1800. (Summer: 0700-1900)

Runways:

Runway 03

Takeoff length: 2675, Landing length: 2400

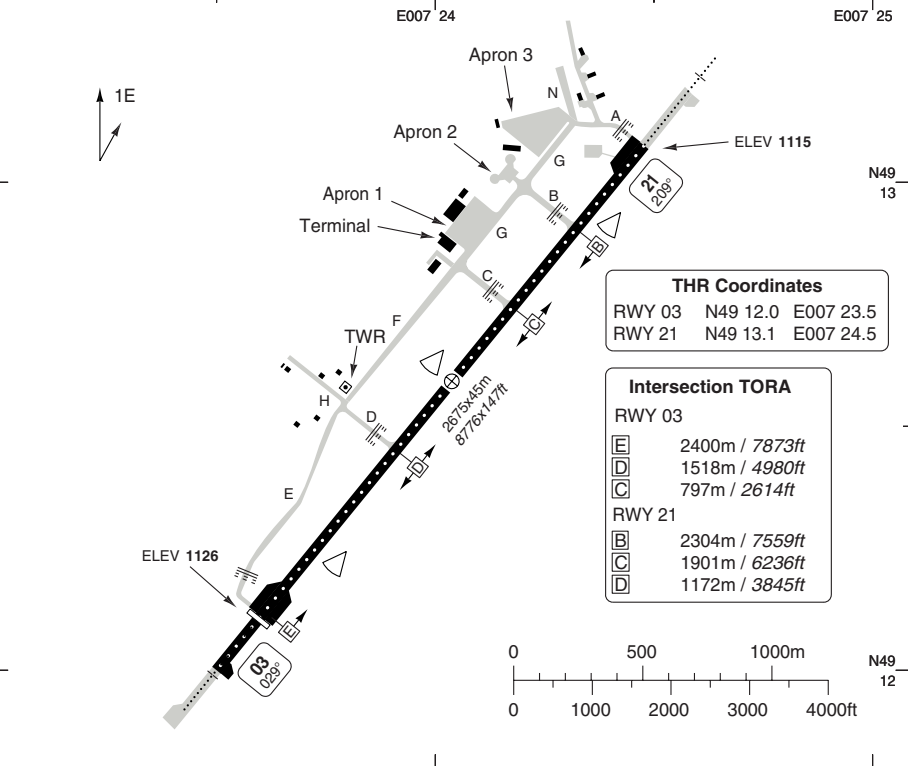
Runway 21

Takeoff length: 2675, Landing length: 2675

AERODROME

Zweibrücken TWR 123.825	Langen RAD 129.675	ATIS 124.65	
----------------------------	-----------------------	----------------	--

AD Elev 1133	ARP: N49 12.6 E007 24.0	RFF: CAT 7, CAT 9 O/R	AD HR: 05-21, other times PPR
--------------	-------------------------	-----------------------	-------------------------------



RWY	Slope	TORA m/ft	LDA m/ft	ALS	REDL	RCLL	Additional
03	-0.1	2675 / 8776	2400 / 7874	H-E ①	H ②	15m	P 3°
21	+0.1	2675 / 8776	2675 / 8776	H-E ①	H ②	15m	P 3°

① 420m. ② White.

EU OPS TAKE OFF MINIMA

RWY	Facilities	RVR			
		A B C	D		
03/21	HRCLL + HREDL + Multiple RVR	Ap.O	LVTO	125m	150m
	RCLL + REDL + Multiple RVR		LVTO	150m	200m
	RCLL + REDL		LVTO	200m	250m
	RCL (day only) or RCL + REDL		LVTO	250m	300m
	RCL (day only) or RCL + REDL			400m	400m
	NIL (day only)			500m	500m

AERODROME

10 - 2

GENERAL

1. AERODROME RESTRICTION

Reverse thrust may only be used when landing to an extent necessary for safety reasons.

2. SPEED

MAX 250kt below FL100.

3. TWY RESTRICTIONS

3.1 TWY D, E and F width 15m/49ft.

3.2 TWY F restricted to ACFT upto 5700 kg.

ARRIVAL

1. NOISE ABATEMENT PROCEDURE

1.1. Arrange flight to leave IAF at a speed which permits OPS in clean configuration. Maintain speed until 12nm from TDP. 210kt +/- 10kt. recommended.

1.2. Recommended 160kt +/- 10kt to OM with intermediate flap setting.

1.3. Landing configuration should be established shortly prior to or over the OM.

DEPARTURE

1. NOISE ABATEMENT PROCEDURES

1.1. Noise certified ACFT in accordance with ICAO Annex 16, Chapter 2:

a) TKOF to 1500ft GND

- take-off power

- take-off flaps

- climb at V2+10kt

b) At 1500ft GND

- reduce power to not less than climb power

c) From 1500ft GND to 3000ft GND

- climb at V2+10kt

d) At 3000ft GND

- acceleration during climb and retraction of flaps.

- normal transition to enroute climb

1.2. Noise certified ACFT in accordance with ICAO Annex 16, Chapter 3:

a) TKOF to 1500ft GND

- take-off power

- take-off flaps

- climb at V2+10kt

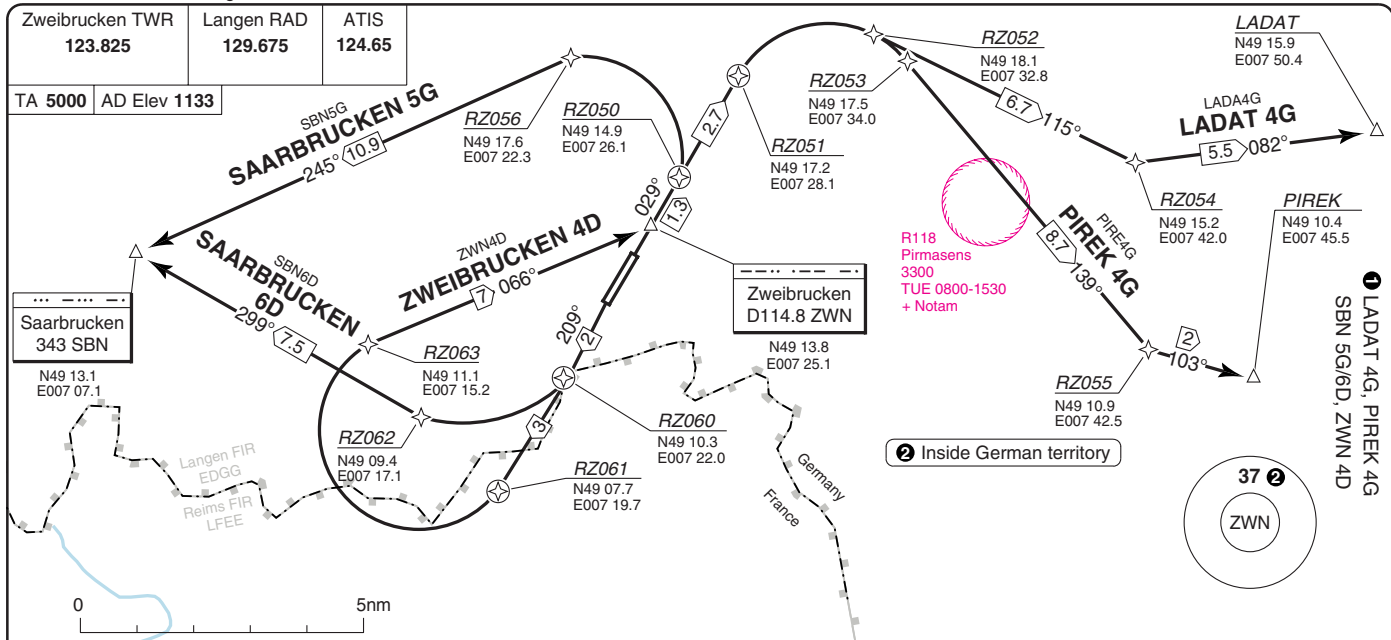
b) At 1500ft GND

- reduce power to not less than climb power

- acceleration during climb and retraction of flaps.

- normal transition to enroute climb

Change: MT, SID designer



NOTE: During activity of night low flying system (NLFS) alternative instructions will be given by ATC.
COM: Contact Langen RAD 129.675 immediately after TKOF.
SPEED: MAX 250kt below FL100.
ALT RESTRICTION: Climb to **4000**.

RWY	SID	MNM Climb	Routeing
03	LADAT 4G		Climb on 029° to ZWN - RZ051 - RZ052 - RZ054 - LADAT.
	PIREK 4G		Climb on 029° to ZWN - RZ051 - RZ053 - RZ055 - PIREK.
21	SBN 5G	4.1% to 3600	Climb on 029° to ZWN - RZ050 - RZ056 - SBN.
	SBN 6D	5.5% to 3600	Climb on R209 ZWN - RZ060 - RZ062 - SBN.
	ZWN 4D		Climb on R209 ZWN - RZ061 - RZ063 - ZWN.

SID RNAV GPS/FMS Overlay

W/E 09 FEB 12

30 - 1 11 JAN 12

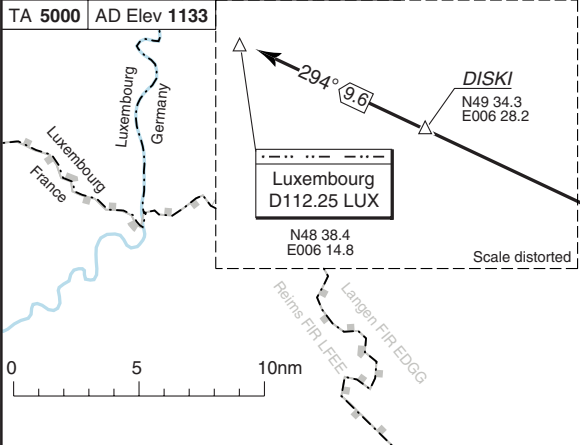
Germany - EDZR / ZWN
ZWEIBRUCKEN

ZWEIBRUCKEN

SID RNAV GPS/FMS Overlay LUX 6D/7G, TOMPI 4D/5G

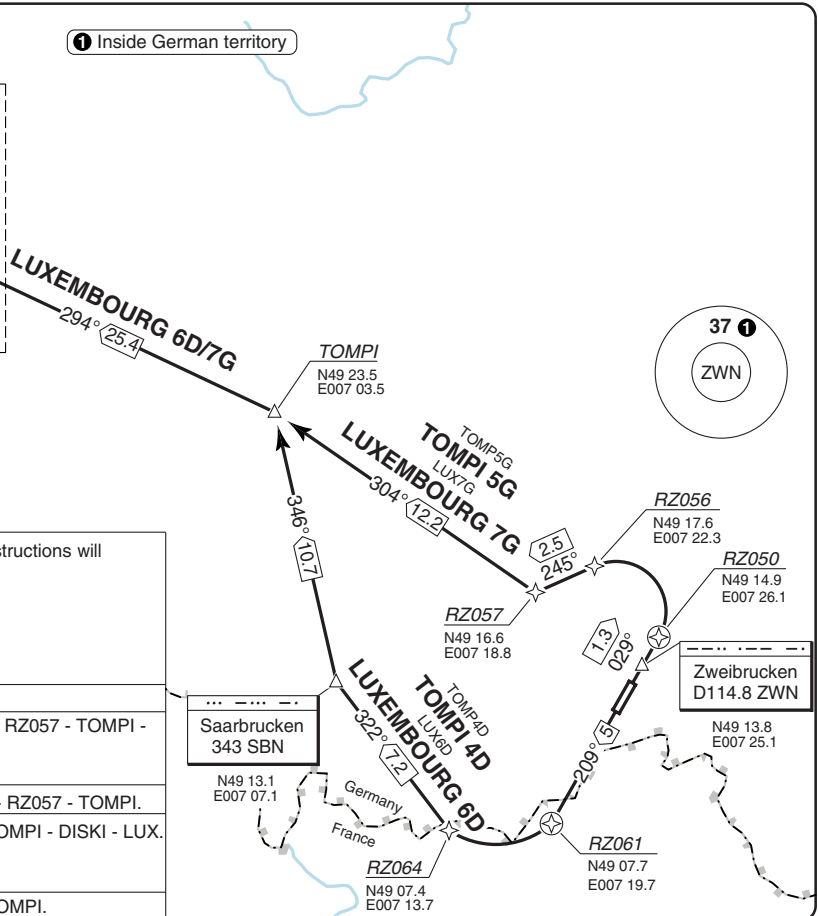
Zweibrucken TWR 123.825	Langen RAD 129.675	ATIS 124.65
-----------------------------------	------------------------------	-----------------------

① Inside German territory



NOTE: During activity of night low flight system (NLFS) alternative instructions will be given by ATC.
COM: Contact Langen RAD 129.675 immediately after TKOF.
SPEED: MAX 250kt below FL100.
ALT RESTRICTION: Climb to **4000**.
MNM CLIMB GRADIENT: LUX 7G, TOMPI 5G: 4.1% to 3600.

RWY	SID	Routeing
03	LUX 7G (Only for DEST ELLX)	Climb on 029° to ZWN - ZWN - RZ050 - RZ056 - RZ057 - TOMPI - DISKI - LUX.
	TOMPI 5G	Climb on 029° to ZWN - ZWN - RZ050 - RZ056 - RZ057 - TOMPI.
21	LUX 6D (Only for DEST ELLX)	Climb on R209 ZWN - RZ061 - RZ064 - SBN - TOMPI - DISKI - LUX.
	TOMPI 4D	Climb on R209 ZWN - RZ061 - RZ064 - SBN - TOMPI.

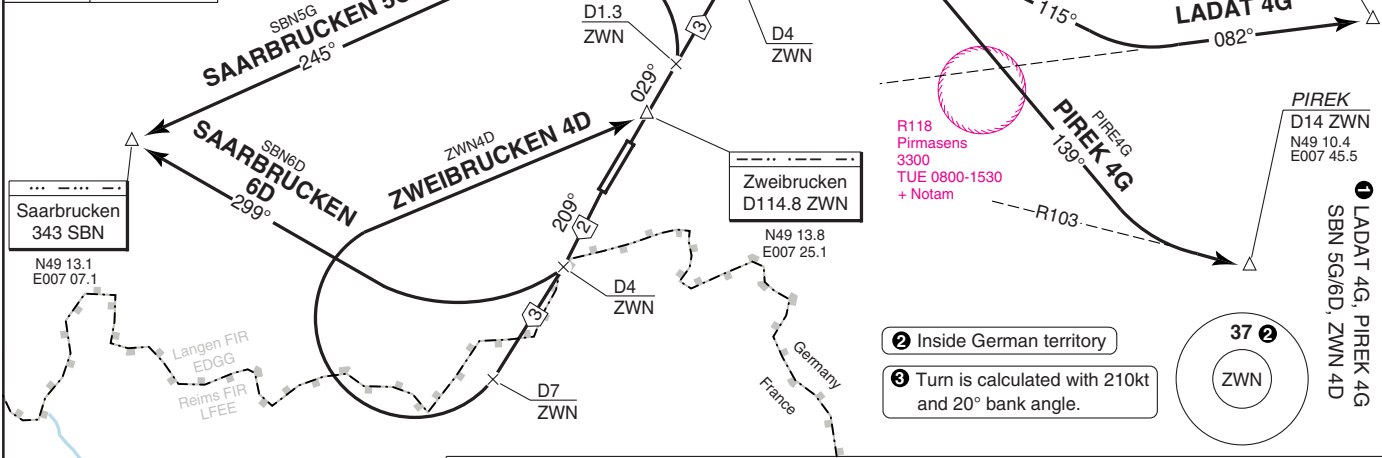


Change: MT, SID designer

© Navtech - edrz03daorg0

Zweibrucken TWR 123.825	Langen RAD 129.675	ATIS 124.65
----------------------------	-----------------------	----------------

TA 5000 AD Elev 1133



Saarbrucken
343 SBN

Zweibrucken
D114.8 ZWN

LADAT
D17 ZWN
N49 15.9
E007 50.4

PIREK
D14 ZWN
N49 10.4
E007 45.5

- ② Inside German territory
- ③ Turn is calculated with 210kt and 20° bank angle.



NOTE: During activity of night low flying system (NLFS) alternative instructions will be given by ATC.
COM: Contact Langen RAD 129.675 immediately after TKOF.
SPEED: MAX 250kt below FL100.
ALT RESTRICTION: Climb to **4000**.

RWY	SID	MNM Climb	Routeing
03	LADAT 4G		Climb on 029° to ZWN - R029 ZWN - at D4 ZWN turn right - 115° - intcp R082 ZWN - LADAT.
	PIREK 4G		Climb on 029° to ZWN - R029 ZWN - at D4 ZWN turn right - 139° - intcp R103 ZWN - PIREK.
21	SBN 5G	4.1% to 3600	Climb on 029° to ZWN - R029 ZWN - at D1.3 ZWN turn left - 245° to SBN - SBN.
	SBN 6D ZWN 4D	5.5% to 3600	Climb on R209 ZWN - at D4 ZWN turn right - 299° to SBN - SBN. Climb on R209 ZWN - at D7 ZWN turn right - ZWN.

SID ①

WIEF 09 FEB 12

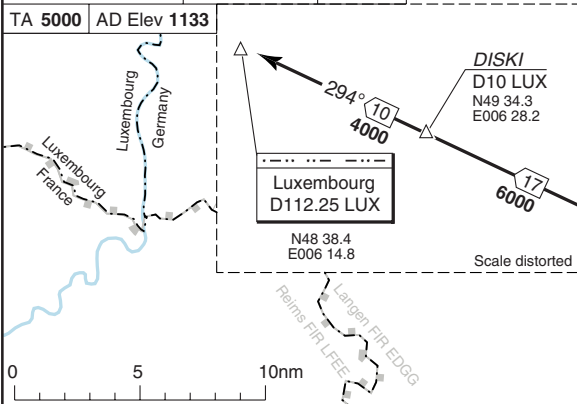
30 - 31 11 JAN 12

Germany - EDRZ / ZWN
ZWEIBRUCKEN

ZWEIBRUCKEN

SID LUX 6D/7G, TOMPI 4D/5G

Zweibrucken TWR 123.825	Langen RAD 129.675	ATIS 124.65
----------------------------	-----------------------	----------------



NOTE: During activity of night low flight system (NLFS) alternative instructions will be given by ATC.

COM: Contact Langen RAD 129.675 immediately after TKOF.

SPEED: MAX 250kt below FL100.

ALT RESTRICTION: Climb to **4000**.

MNM CLIMB GRADIENT: LUX 7G, TOMPI 5G: 4.1% upto 3600.

RWY	SID	Routeing
03	LUX 7G (Only for DEST ELLX)	Climb on 029° to ZWN - ZWN - R029 ZWN - at D1.3 ZWN turn left - 245° - intcp R304 ZWN - TOMPI - DISKI - LUX.
	TOMPI 5G	Climb on 029° to ZWN - ZWN - R029 ZWN - at D1.3 ZWN turn left - 245° - intcp R304 ZWN - TOMPI.
21	LUX 6D (Only for DEST ELLX)	Climb on R209 ZWN - at D7 ZWN turn right - 322° to SBN - SBN - TOMPI - DISKI - LUX.
	TOMPI 4D	Climb on R209 ZWN - at D7 ZWN turn right - 322° to SBN - SBN - TOMPI.

① Inside German territory

② Turn is calculated with 210kt and 20° bank angle.

LUXEMBOURG 6D/7G

TOMPI
D35 LUX
D17 ZWN
N49 23.5
E007 03.5

LUXEMBOURG 7G

LUXEMBOURG 5G

LUXEMBOURG 6D

LUXEMBOURG 4D

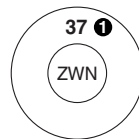
Saarbrücken
343 SBN

N49 13.1
E007 07.1

D1.3
ZWN

Zweibrücken
D114.8 ZWN

N49 13.8
E007 25.1



© Navtech - edrz01aaorg0

Langen RAD 129.675	Zweibrucken TWR 123.825	ATIS 124.65
-----------------------	----------------------------	----------------

TL ATC AD Elev 1133

Luxembourg D112.25 LUX

N49 38.4
E006 14.8

Luxembourg
ELLX

4000

Luxembourg
Germany

DISKI
D10 LUX
N49 34.3
E006 28.2

Note
During activity of NLFS
alternative instructions
will be given by ATC.

① Only for DEP ELLX

①
LUX7A
LUXEMBOURG 7A
②5
6000

TOMPI
D17 ZWN
D35 LUX
N49 23.5
E007 03.5

TOMP3A
TOMPI 3A
①7
4000

090°

4000

←270°

Pirmasens
EDRP

Zweibrucken D114.8 ZWN

N49 13.8
E007 25.1

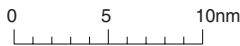
Saarbrucken
EDDR

Sarreguemines
LFGU

37 ②

ZWN

② Inside German territory



STAR

WIEF 09 FEB 12

40 - 1 | 11 JAN 12

ZWEIBRUCKEN

Germany - EDRZ / ZQW

40 - 1

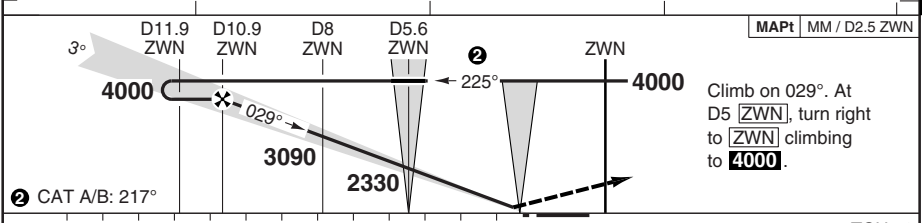
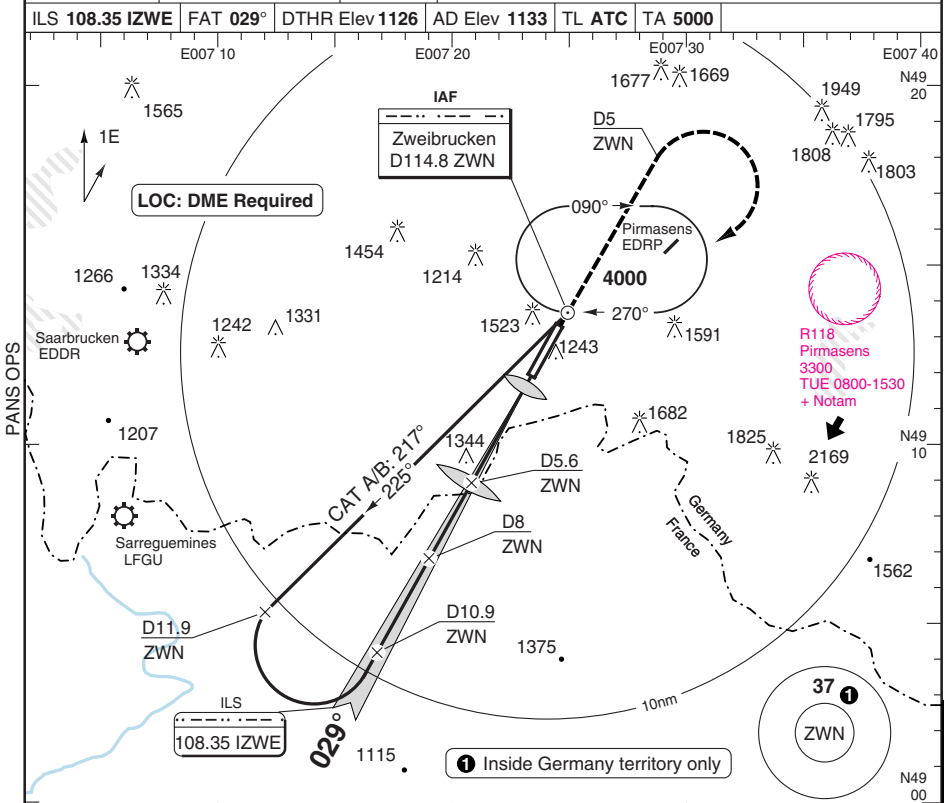
Reverse side blank

THIS CHART IS A PART OF NAVIGRAPH NDAC AND IS INTENDED FOR FLIGHT SIMULATION USE ONLY

Change: Designator: MT

ILS RWY 03

Langen RAD 129.675	Zweibrucken TWR 123.825	ATIS 124.65
ILS 108.35 IZWE		
FAT 029°	DTHR Elev 1126	AD Elev 1133
TL ATC	TA 5000	



Climb on 029°. At D5 [ZWN], turn right to [ZWN] climbing to **4000**.

ACFT						DME		3.0° ALT		LDA 2400x45 7874x147ft	
A	1370 (237)	800m		1570 (440)		10.8	4000	P 3°			
B	1380 (247)	800m		1500m		9	3430				
C	1390 (257)	800m		1570 (440)		8	3110				
D	1400 (267)	900m		1600m		7	2780				
GS						6	2460				
ROD 3.0°						5	2140				
						4	1820				
						3.2	1570				
							420				

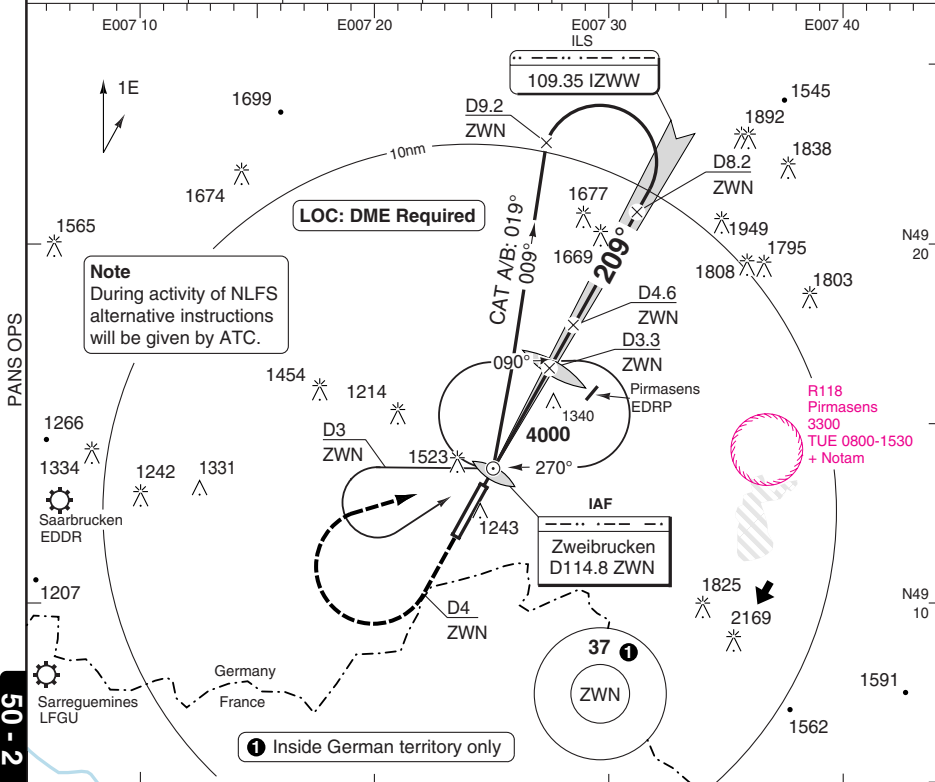
© Navtech - edrz01iaip00

50 - 1

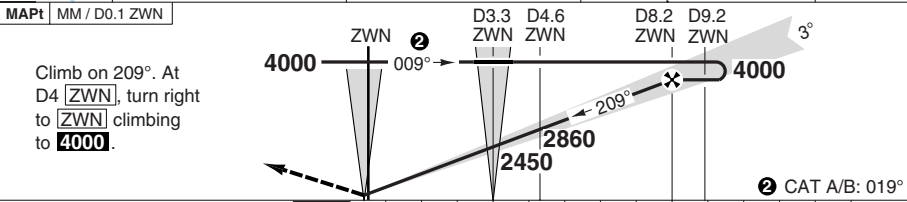
ILS RWY 21

Langen RAD 129.675	Zweibrucken TWR 123.825	ATIS 124.65
-----------------------	----------------------------	----------------

ILS 109.35 IZWW	FAT 209°	THR Elev 1115	AD Elev 1133	TL ATC	TA 5000
-----------------	----------	---------------	--------------	--------	---------



50 - 2



TCH 54

ACFT	ILS	LOC+DME
A	1320 (200) 750m	1590 (480) 1500m
B	1320 (205) 750m	
C	1330 (215) 800m	1590 (480) 1800m
D	1340 (225) 800m	

DME ZWN	3.0° ALT	LDA 2675x45 8776x147ft
8.1	4000	
6	3320	
5	3000	
4	2680	
3	2360	
2	2040	
1	1720	
0.6	1590	

GS	80	100	120	140	160
ROD 3.0°	430	540	650	760	860

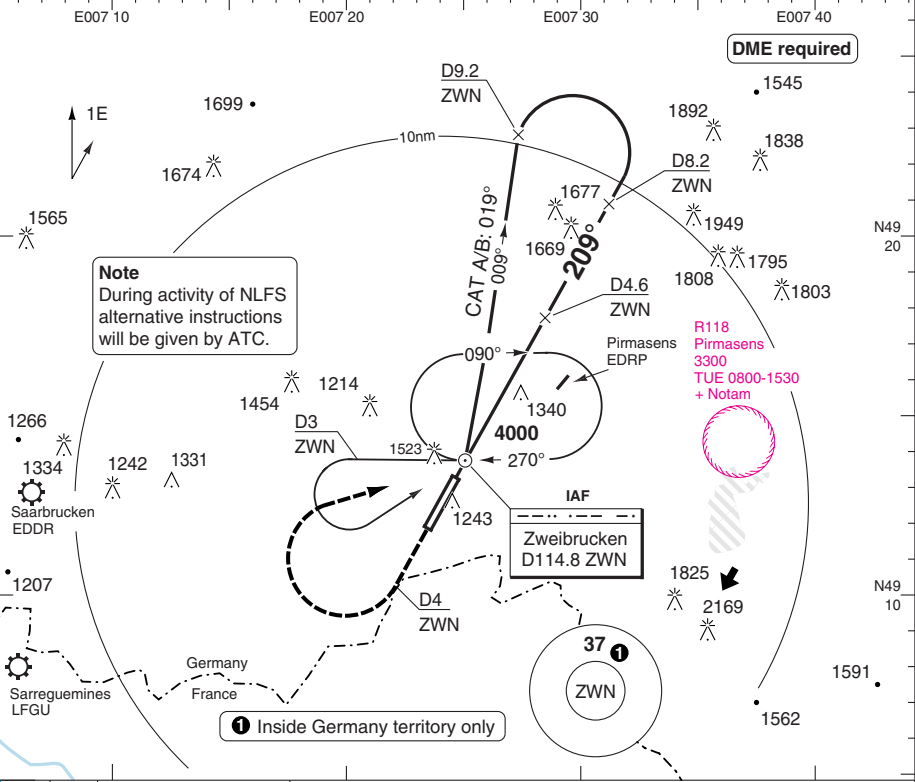
© Navtech - edrz02iaip00

Change: MT

VOR RWY 21

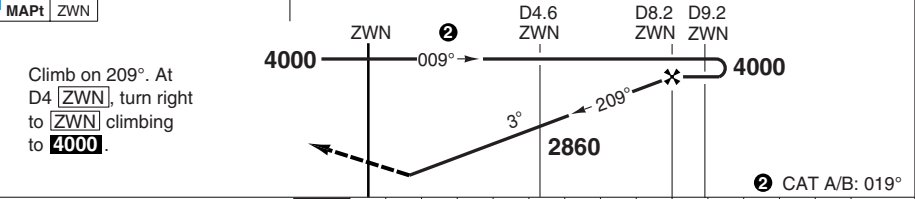
Langen RAD 129.675	Zweibrucken TWR 123.825	ATIS 124.65
-----------------------	----------------------------	----------------

VOR/DME 114.8 ZWN	FAT 209°	THR Elev 1115	AD Elev 1133	TL ATC	TA 5000
-------------------	----------	---------------	--------------	--------	---------



PANS OPS

50 - 4



TCH 54	0	1	2	3	4	5	6	7	8	9	10	11	12	13	14	nm
--------	---	---	---	---	---	---	---	---	---	---	----	----	----	----	----	----

ACFT	VOR+DME
A	1670 (560) 1500m
B	
C	1670 (560) 2100m
D	

Note: Circling NA

DME ZWN	3.0° ALT	LDA 2675x45 8776x147ft
8.2	4000	P 3° IALS 420
6	3310	
5	2990	
4	2670	
3	2350	
2	2030	
0.9	1670	

GS	80	100	120	140	160
ROD 3.0°	430	540	640	750	860

© Navtech - edrz04iaip00
 EU OPS

Change: MT, Note

JAR-OPS Landing Minima

The following Minima is for Public Transport aircraft and conforms to JAR-OPS1 regulations.

STRAIGHT-IN APPROACH		C				D			
R/W	Procedure	DA/ MDA QNH ft	DH/ MDH QFE ft	RVR m	RVR No ALS m	DA/ MDA QNH ft	DH/ MDH QFE ft	RVR m	RVR No ALS m
03	ILS (1)	1390	260	800	1200	1400	270	800	1200
03	LOC/DME	1570	440	1400	1800	1570	440	1600	2000
03	VOR/DME	1600	470	1600	2000	1600	470	1800	2000
21	ILS (1)	1340	220	700	1000	1350	230	700	1000
21	LOC/DME	1600	480	1600	2000	1600	480	1800	2000
21	VOR/DME	1680	560	1600	2000	1680	560	1800	2000

Notes:

(1) Includes Cat DL aeroplanes.

CIRCLING		C			D		
R/W	Procedure	MDA QNH ft	MDH QFE ft	Vis m	MDA QNH ft	MDH QFE ft	Vis m
Not Authorised							

Notes:

TAKE-OFF		C	D
Runway	Facilities	m	m
03, 21	RCLL(H)+REDL(H)+Multi RVR (1)	125	150
03, 21	RCLL+REDL+Multi RVR	150	200
03, 21	RCLL+REDL	200	250
03, 21	RCL and/or REDL (2)	250	300
All	Nil (Day only)	500	500

Notes:

(1) Subject to Approval.

(2) For night operations, at least runway edge and end lights required.

JAR-OPS Landing Minima

ZWEIBRUCKEN

The following Minima is for Public Transport aircraft and conforms to JAR-OPS1 regulations.

STRAIGHT-IN APPROACH		A				B			
R/W	Procedure	DA/ MDA QNH ft	DH/ MDH QFE ft	RVR m	RVR No ALS m	DA/ MDA QNH ft	DH/ MDH QFE ft	RVR m	RVR No ALS m
03	ILS (1)	1370	240	700	1000	1380	250	700	1000
03	LOC/DME	1570	440	1200	1500	1570	440	1300	1500
03	VOR/DME	1600	470	1400	1500	1600	470	1500	1500
21	ILS (1)	1320	200	700	1000	1330	210	700	1000
21	LOC/DME	1600	480	1400	1500	1600	480	1500	1500
21	VOR/DME	1680	560	1400	1500	1680	560	1500	1500

Notes:

(1) Includes Cat DL aeroplanes.

CIRCLING		A			B		
R/W	Procedure	MDA QNH ft	MDH QFE ft	Vis m	MDA QNH ft	MDH QFE ft	Vis m
Not Authorised							

Notes:

TAKE-OFF		A	B
Runway	Facilities	m	m
03, 21	RCLL(H)+REDL(H)+Multi RVR (1)	125	125
03, 21	RCLL+REDL+Multi RVR	150	150
03, 21	RCLL+REDL	200	200
03, 21	RCL and/or REDL (2)	250	250
All	Nil (Day only)	500	500

Notes:

(1) Subject to Approval.

(2) For night operations, at least runway edge and end lights required.