

Airport information:

Country: Germany

City: DORTMUND

Coordinates: N 51° 31.1', E007 36.7

Elevation: 425

Customs: Customs: Passengers: MON-SUN 0600-2200, Cargo: MON-FRI 0630-2000

Fuel: 100LL, Jet A1

RFF: CAT 7

hours: ATS: 0445-2100, until 2200 PPR

Runways:

Runway 06

Takeoff length: 2000, Landing length: 1700

Runway 24

Takeoff length: 2000, Landing length: 1700

AERODROME

Dortmund GND 121.825	TWR 134.175	ATIS 125.125
-------------------------	----------------	-----------------

AD Elev 425 | ARP: N51 31.1 E007 36.7 | RFF: CAT 7 | AD HR: MON-FRI 0445-2100 + O/R 21-22

E007 36

E007 37

E007 38



THR Coordinates			
RWY 06	N51 31.0	E007 36.3	
RWY 24	N51 31.3	E007 37.4	

VOR/DME DOR

ELEV 401

24
241°

2000x45m
6561x147ft

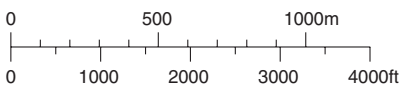
ELEV 418

06
061°

N51
31

Terminal
Fire Station
TWR

Intersection TORA	
RWY 06	
B	1700m / 5577ft
RWY 24	
C	1700m / 5577ft



RWY	Slope	TORA m/ft	LDA m/ft	ALS	REDL	RCLL	Additional
06	-0.3	2000 / 6561	1700 / 5577	H-D	H 1	15m	P 3° (53)
24	+0.3	2000 / 6561	1700 / 5577	H-D	H 1	15m	P 3° (53)

1 White

EU OPS TAKE OFF MINIMA

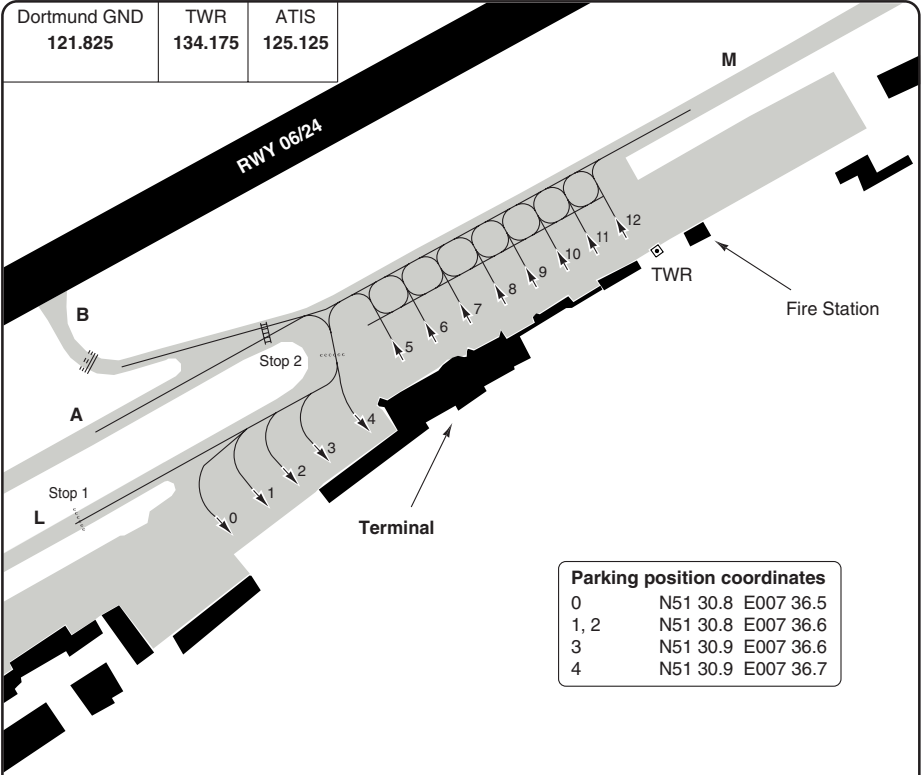
RWY	Facilities	RVR					
		A	B	C	D		
06/24	RCLL + REDL + Multiple RVR			LVTO	150m		200m
	RCLL + REDL			LVTO	200m		250m
	RCL (day only) or RCL + REDL			LVTO	250m		300m
	RCL (day only) or RCL + REDL				400m		400m
	NIL (day only)				500m		500m

© Navitech - edlw01laorg0

Change: RCLL

AERODROME

Dortmund GND 121.825	TWR 134.175	ATIS 125.125
-------------------------	----------------	-----------------



Parking position coordinates		
0	N51 30.8	E007 36.5
1, 2	N51 30.8	E007 36.6
3	N51 30.9	E007 36.6
4	N51 30.9	E007 36.7

GENERAL

DORTMUND

GENERAL

1. **TWY RESTRICTIONS**
TWY B width 15m/49ft. TWY not usable for ACFT of more than 30 MTOW.
TWY M width 18m/59ft along APN.
2. **NAV RESTRICTIONS**
 - 2.1 NDB DWI course scalloping on final RWY 06 up to 10°.
 - 2.2 ILS GP RWY 06 usable only within 10nm from THR.

ARRIVAL

1. **VISUAL APCH**
VIS APCH with Cat C-E ACFT shall be conducted in such a way that final is at least 4nm.
2. **RWY**
RWY equipped with antiskid surface.
3. **PARKING**
APIS avbl for stands 0-4.
4. **NOISE ABATEMENT PROC**
 - 4.1 Arrange flight to leave IAF at a speed which permits OPS in clean config. Maintain speed until 12nm from TDP. 210kt +/-10kt recommended.
 - 4.2 Recommend 160kt +/-10kt to OM with intermediate flap setting.
 - 4.3 Landing config should be established shortly prior to or over the OM.

DEPARTURE

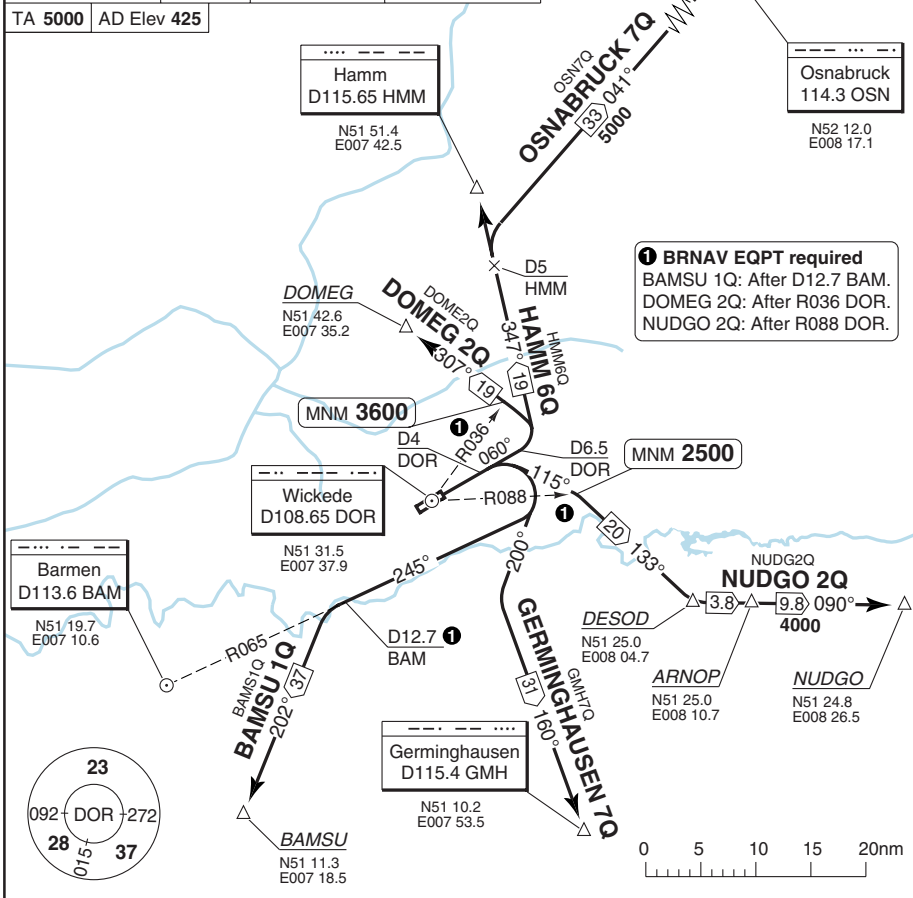
1. **NOISE ABATEMENT PROC**
 - 1.1 Noise certified ACFT in accordance with ICAO Annex 16, Chapter 2:
ICAO standard NAP (Proc A) applies.
 - 1.2 Noise certified ACFT in accordance with ICAO Annex 16, Chapter 3:
 - a) TKOF to 1500ft/GND.
- take-off power
- take-off flaps
- climb at V2+10kt
 - b) At 1500ft/GND.
-reduce power to not less than climb power
-acceleration during climb and retraction of flaps
- normal transition to enroute climb
2. **LOW VISIBILITY TKOF PROC**
 - 2.1 Taxiing to/from RWY will generally be conducted via TWY M an A and/or D only.
 - 2.2 TWY C may be used on express order from TWR only.
TWY B closed, no CL AVBL.
 - 2.3 TWY L west of "Stop 1" and TWY K may be used only when guided by Follow-me car.
 - 2.4 When RVR less than 200m, Follow-me cars will be used.

SID RWY 06

DORTMUND

Dortmund GND 121.825	TWR 134.175	Langen RAD 125.225	Dortmund ATIS 125.125
-------------------------	----------------	-----------------------	--------------------------

TA 5000 AD Elev 425



COM: CTC Langen RAD 125.225 immediately after TKOF.

SPEED: MAX 250kt below FL100.

ALT RESTRICTION: Climb to **5000**

INITIAL CLIMB: Climb on R060 DOR - follow SID.

SID	MNM Climb	Routeing	Altitude
BAMSU 1Q ①		At D4 DOR turn right - 200° - R065 BAM - at D12.7 BAM turn left - 202° - BAMSU.	
DOMEQ 2Q ①	4.8% to R036 DOR	At D6.5 DOR turn left - 307° - DOMEQ.	R036 DOR MNM 3600
GMH 7Q		At D4 DOR turn right - 200° - R340 GMH - GMH.	
HAMM 6Q		At D6.5 DOR turn left - R167 HMM - HMM.	
NUDGO 2Q ①	4.8% to 5000	At D4 DOR turn right - 115° - at R088 DOR turn right - 133° - DESOD - ARNOP - NUDGO.	R088 DOR MNM 2500
OSN 7Q		At D6.5 DOR turn left - R167 HMM - at D5 HMM turn right - R221 OSN - OSN.	

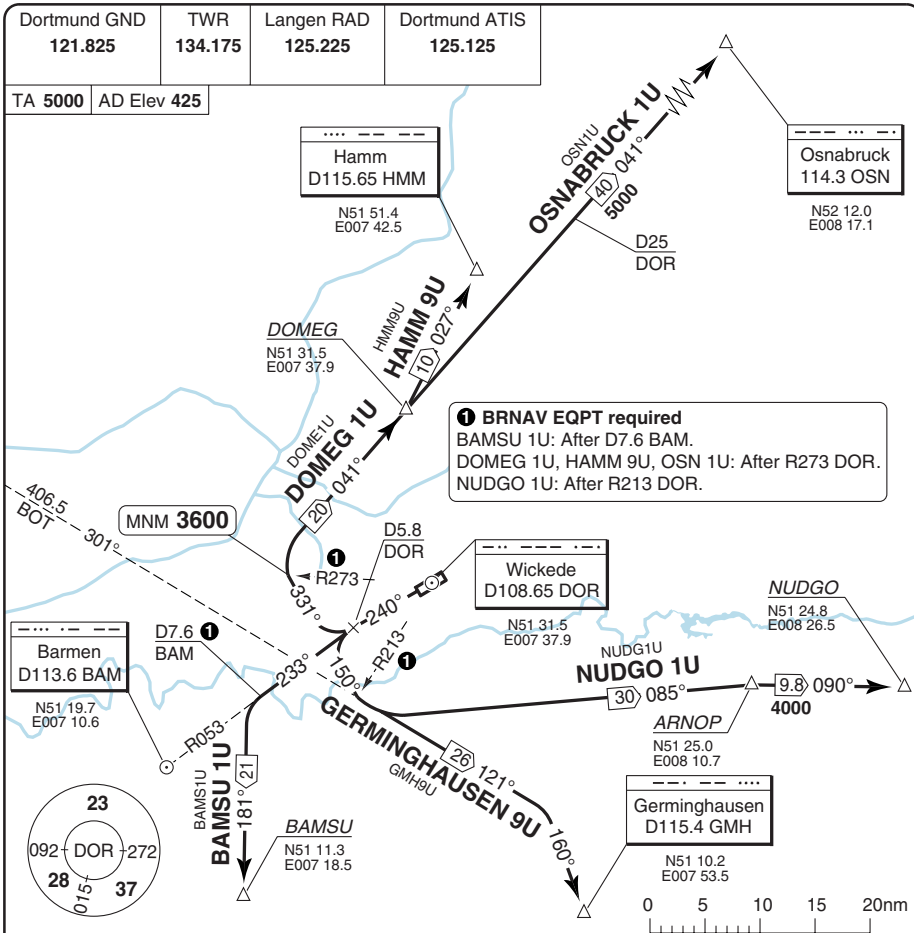
© Navitech EAG - edlwo1daorog

Change: New Spec.

THIS CHART IS A PART OF NAVIGRAPH NDAC AND IS INTENDED FOR FLIGHT SIMULATION USE ONLY

SID RWY 24

DORTMUND



COM: CTC Langen RAD 125.225 immediately after TKOF.

SPEED: MAX 250kt below FL100.

ALT RESTRICTION: Climb to **5000**

INITIAL CLIMB: Climb on R240 DOR to D5.8 DOR - follow SID.

SID	MNM Climb	Routeing	Altitude
BAMSU 1U ①		Turn left - R053 BAM - at D7.6 BAM turn left - 181° - BAMSU.	
DOMEG 1U ①	4.8% to R273 DOR	Turn right - 331° - at R273 DOR turn right - 041° - DOMEG.	R273 DOR MNM 3600
GMH 9U		Turn left - 150° - 121° from BOT - R340 GMH - GMH.	
HAMM 9U ①	4.8% to R273 DOR	Turn right - 331° - at R273 DOR turn right - 041° - DOMEG - HMM.	R273 DOR MNM 3600
NUDGO 1U ①		Turn left - 150° - at R213 DOR turn left - 085° - ARNOP - NUDGO.	
OSN 1U ①	4.8% to R273 DOR	Turn right - 331° - at R273 DOR turn right - 041° - DOMEG - OSN.	R273 DOR MNM 3600

© Navitech EAG - edlw02daorg

Change: New Spec.

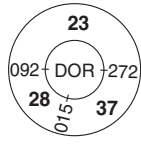
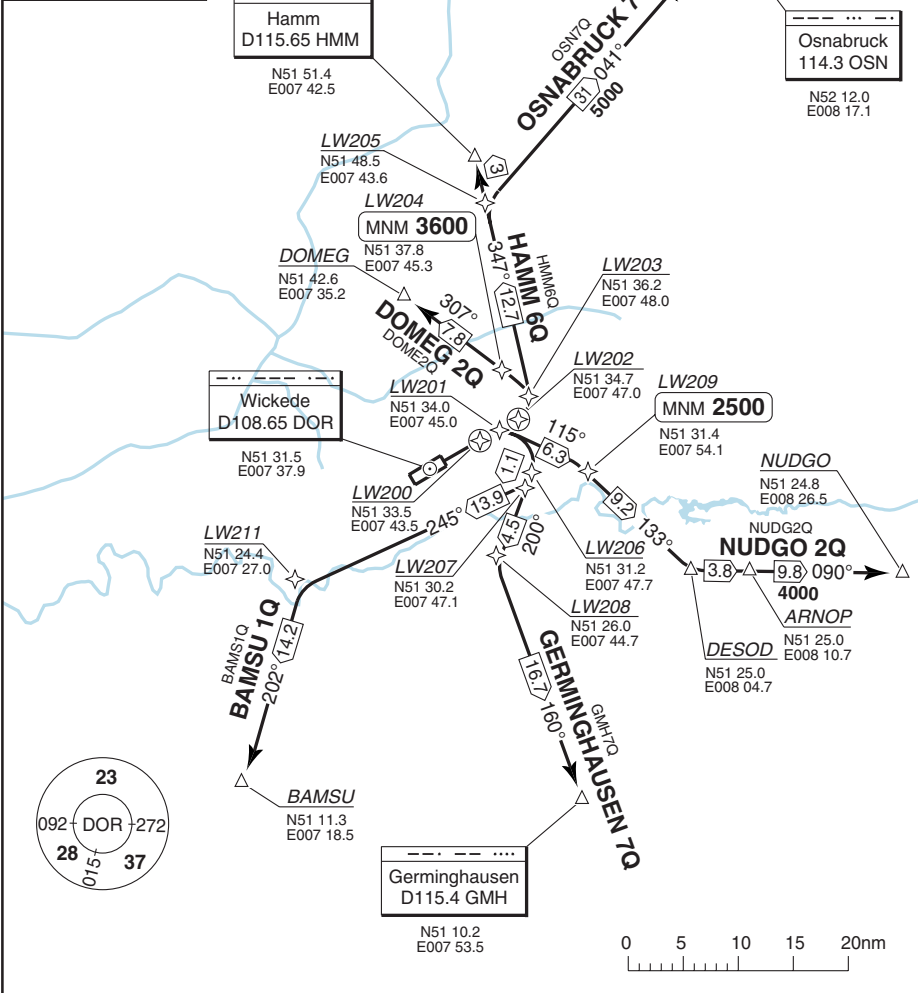
THIS CHART IS A PART OF NAVIGRAPH NDAC AND IS INTENDED FOR FLIGHT SIMULATION USE ONLY

SID RWY 06 **RNAV** GPS/FMS Overlay

DORTMUND

Dortmund GND 121.825	TWR 134.175	Langen RAD 125.225	Dortmund ATIS 125.125
-------------------------	----------------	-----------------------	--------------------------

TA 5000 AD Elev 425



COM: CTC Langen RAD 125.225 immediately after TKOF.
SPEED: MAX 250kt below FL100.
ALT RESTRICTION: Climb to **5000**

SID	MNM Climb	Routeing	Altitude
BAMSU 1Q		LW200 - LW207 - LW211 - BAMSU.	
DOMEQ 2Q	4.8% to LW204	LW202 - LW204 - DOMEQ.	LW204 MNM 3600
GMH 7Q		LW200 - LW206 - LW208 - GMH.	
HAMM 6Q		LW202 - LW203 - HMM.	
NUDGO 2Q	4.8% to 5000	LW201 - LW209 - DESOD - ARNOP - NUDGO.	LW209 MNM 2500
OSN 7Q		LW202 - LW203 - LW205 - OSN.	

Change: New Spec.

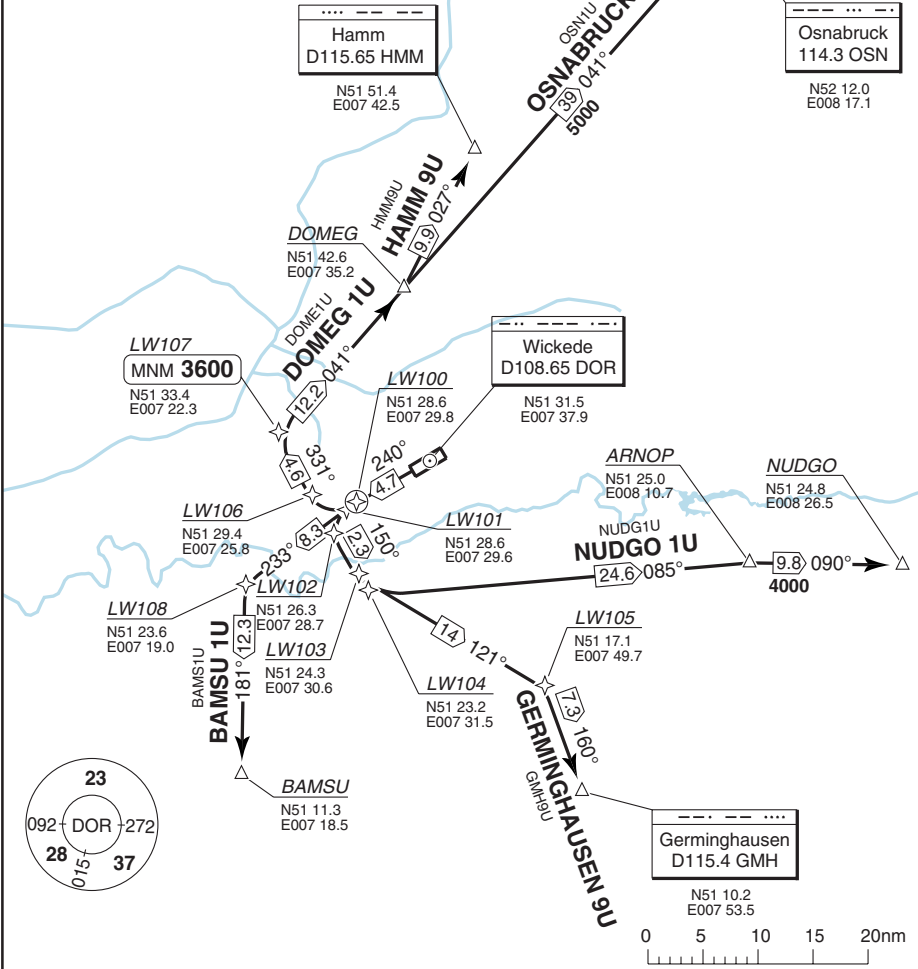
© Navitech EAG - edlw03daorg

SID RWY 24 **RNAV** GPS/FMS Overlay

DORTMUND

Dortmund GND 121.825	TWR 134.175	Langen RAD 125.225	Dortmund ATIS 125.125
-------------------------	----------------	-----------------------	--------------------------

TA 5000 AD Elev 425



COM: CTC Langen RAD 125.225 immediately after TKOF.

SPEED: MAX 250kt below FL100.

ALT RESTRICTION: Climb to **5000**

SID	MNM Climb	Routeing	Altitudes
BAMSU 1U		LW100 - LW101 - LW108 - BAMSU.	
DOMEQ 1U	4.8% to R273 DOR	LW100 - LW106 - LW107 - DOMEQ.	LW107 MNM 3600
GMH 9U		LW100 - LW102 - LW103 - LW105 - GMH.	
HAMM 9U	4.8% to R273 DOR	LW100 - LW106 - LW107 - DOMEQ - HMM.	LW107 MNM 3600
NUDGO 1U		LW100 - LW102 - LW104 - ARNOP - NUDGO.	
OSN 1U	4.8% to R273 DOR	LW100 - LW106 - LW107 - DOMEQ - OSN.	LW107 MNM 3600

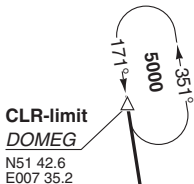
Change: New Spec.

THIS CHART IS A PART OF NAVIGRAPH NDAC AND IS INTENDED FOR FLIGHT SIMULATION USE ONLY

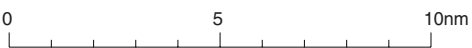
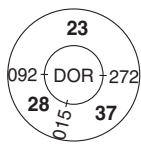
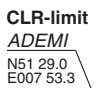
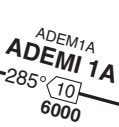
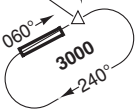
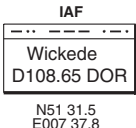
STAR

Langen RAD 125.225	Dortmund TWR 134.175	GND 121.825	ATIS 125.125
------------------------------	--------------------------------	-----------------------	------------------------

TL ATC AD Elev 425



SPEED
MAX 250kt below FL100.



© Navitech EAG - edlw01aaorg0

Reverse side blank

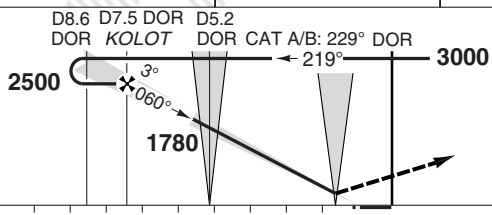
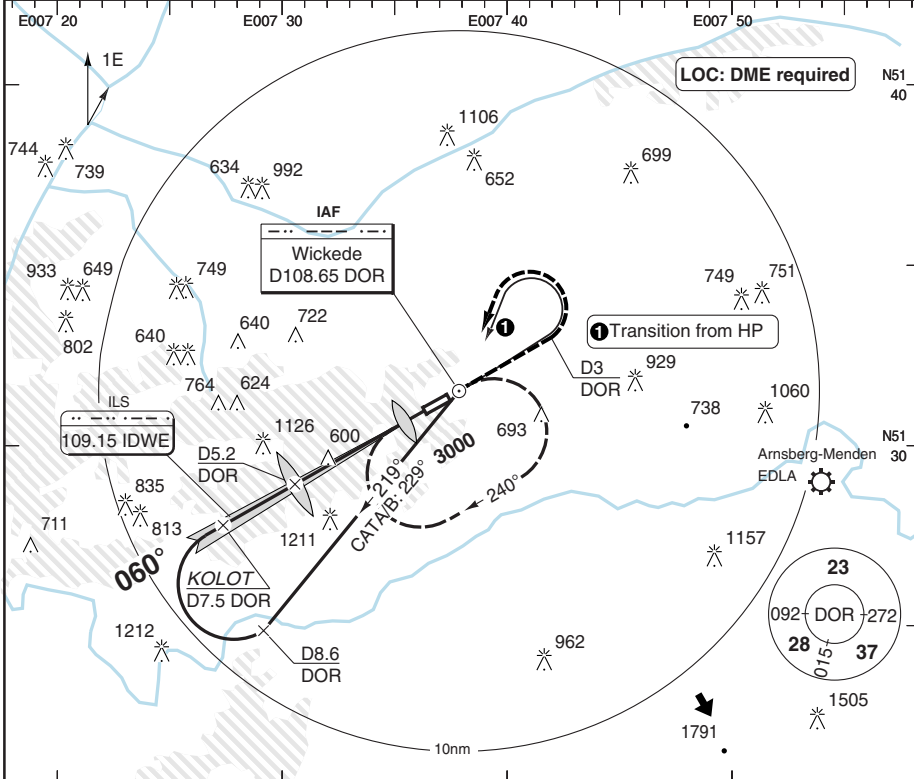
Change: New Spec.

THIS CHART IS A PART OF NAVIGRAPH NDAC AND IS INTENDED FOR FLIGHT SIMULATION USE ONLY

ILS RWY 06

Langen RAD 125.225	Dortmund TWR 134.175	GND 121.825	ATIS 125.125
------------------------------	--------------------------------	-----------------------	------------------------

ILS 109.15 IDWE	FAT 060°	DTHR Elev 418	AD Elev 425	TL ATC	TA 5000
------------------------	-----------------	----------------------	--------------------	---------------	----------------



Climb on 060° to D3
DOR turn left
to DOR climbing to **3000**.

MAPt MM / D1.7 DOR

nm 10 9 8 7 6 5 4 3 2 1 0 TCH 56

ACFT	CAT II	ILS	LOC+DME	Note: Circling NA
A				
B	RA 94 300m	620 (200) 550m	850 (430) 1300m	
C				
D	RA 99 300m	630 (204) 550m		

DME DOR	3.0° ALT	LDA 1700x45 5577x147ft P 3° (53)
7.5	2500	
7	2360	
6	2040	
5	1720	
4	1400	
3	1080	
2.3	850	

GS	100	120	140	160
ROD 3.0°	540	650	750	860

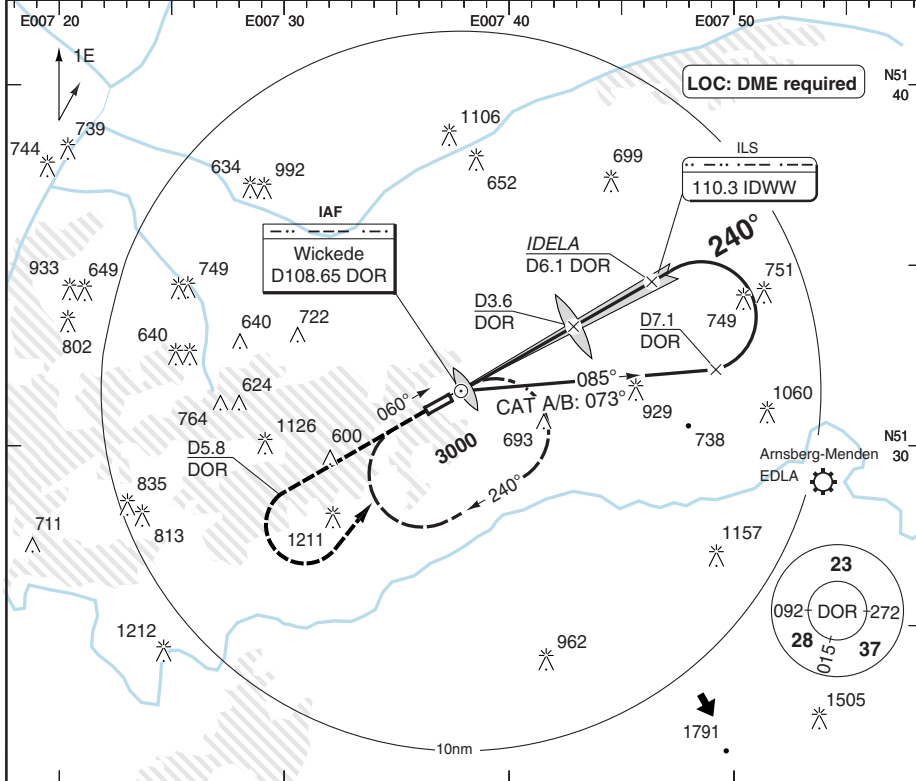
© Navtech - edlw01aiip00
EU OPS

FALS

ILS RWY 24

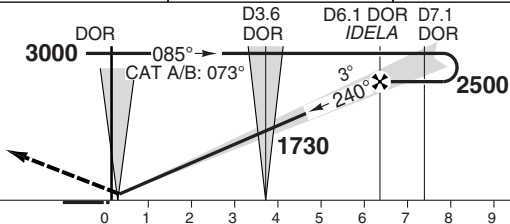
Langen RAD 125.225	Dortmund TWR 134.175	GND 121.825	ATIS 125.125
------------------------------	--------------------------------	-----------------------	------------------------

ILS 110.3 IDWW	FAT 240°	DTHR Elev 401	AD Elev 425	TL ATC	TA 5000
-----------------------	-----------------	----------------------	--------------------	---------------	----------------



MAPt MM / D0.1 DOR

Climb on 240° to D5.8
 [DOR] turn left
 to [DOR] climbing to **3000**.



TCH 51

ACFT	CAT II	ILS	LOC+DME
A	RA100 300m	610 (200) 550m	850 (440) 1300m
B			
C	RA104 300m		
D	RA123 300m		

Note: Circling NA

DME	3.1°	LDA 1700x45
DOR	ALT	5577x147ft
6	2500	P 3° (53)
5	2190	
4	1870	
3	1540	
2	1210	
0.9	850	

FALS

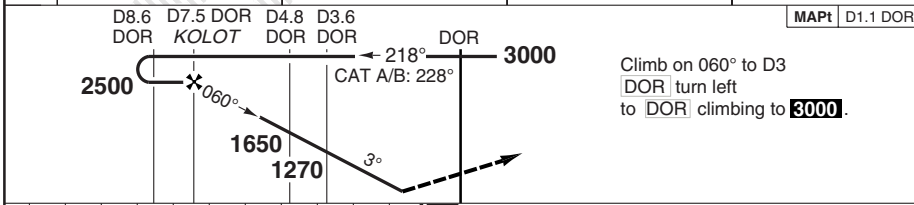
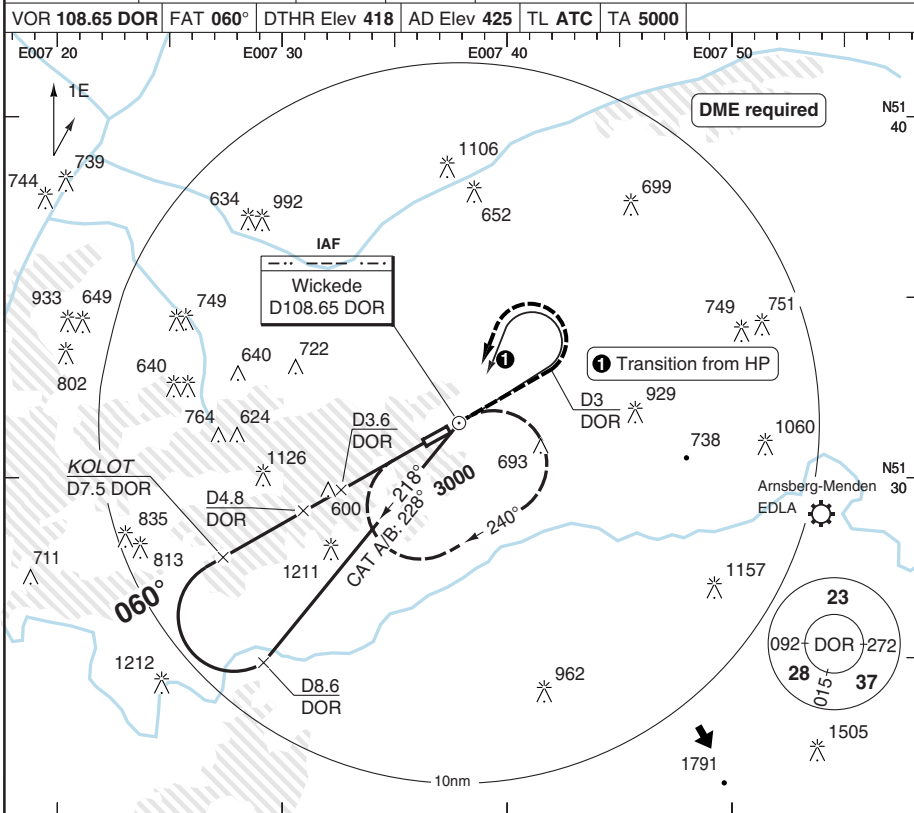
© Navtech - edlw02aiip00

GS	100	120	140	160
ROD 3.1°	550	660	770	880

Change: Minima.

VOR RWY 06

Langen RAD 125.225	Dortmund TWR 134.175	GND 121.825	ATIS 125.125
VOR 108.65 DOR		FAT 060°	DTHR Elev 418
AD Elev 425		TL ATC	TA 5000



ACFT	VOR+DME	Note: Circling NA
A		
B	920 (500)	
C	1500m	
D		

DME DOR	3.0° ALT	LDA 1700x45 5577x147ft P 3° (53)
7.4	2500	
7	2360	
6	2040	
5	1720	
4	1400	
3	1080	
2.5	930	

GS	100	120	140	160
ROD 3.0°	540	650	750	860

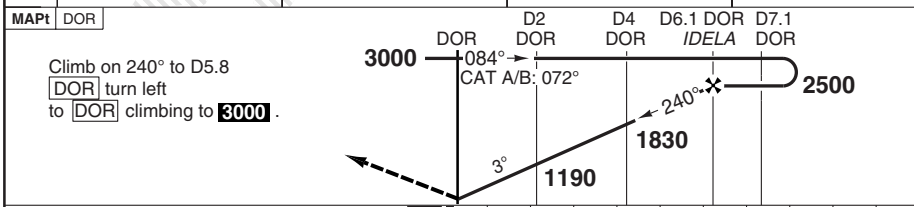
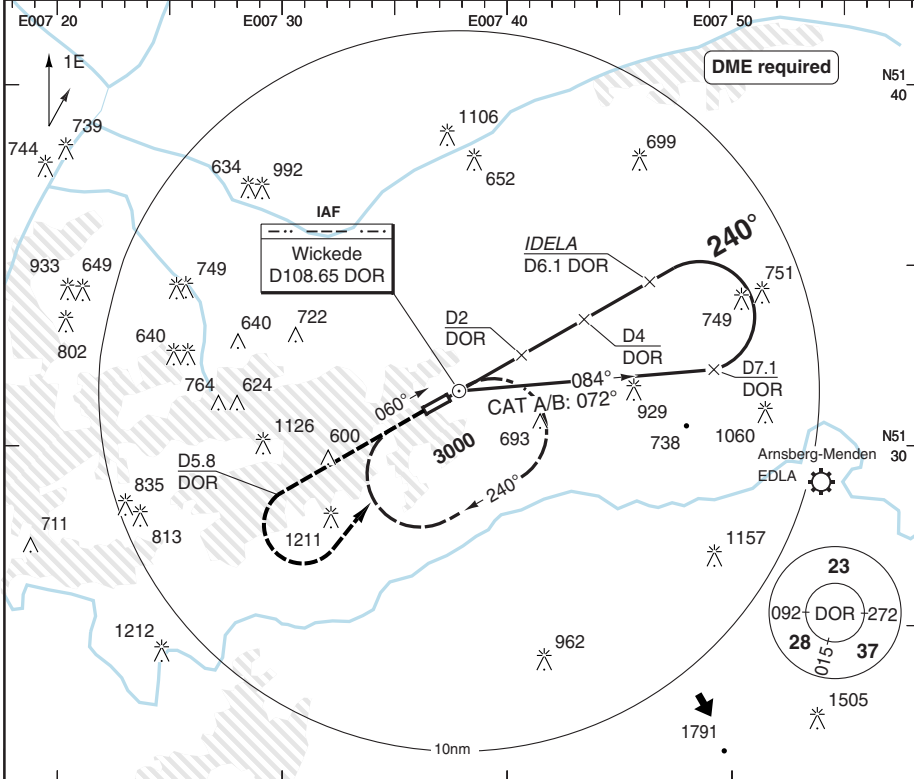
© Navitech - edlw03iap00
EU OPS

FALS

VOR RWY 24

Langen RAD 125.225	Dortmund TWR 134.175	GND 121.825	ATIS 125.125
------------------------------	--------------------------------	-----------------------	------------------------

VOR 108.65 DOR	FAT 240°	DTHR Elev 401	AD Elev 425	TL ATC	TA 5000
-----------------------	-----------------	----------------------	--------------------	---------------	----------------



Climb on 240° to D5.8
DOR turn left
 to **DOR** climbing to **3000**.

TCH 50

ACFT	VOR+DME	Note: Circling NA
A		
B	900 (500)	
C	1500m	
D		

DME	3.0°	LDA 1700x45
DOR	ALT	5577x147ft
6.1	2500	P 3° (53)
5	2160	
4	1840	
3	1520	
2	1190	
1.0	880	

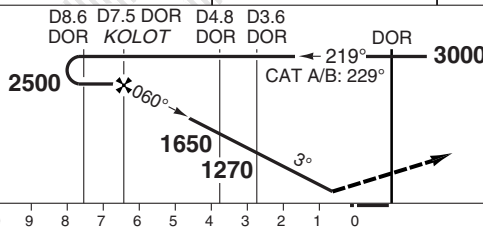
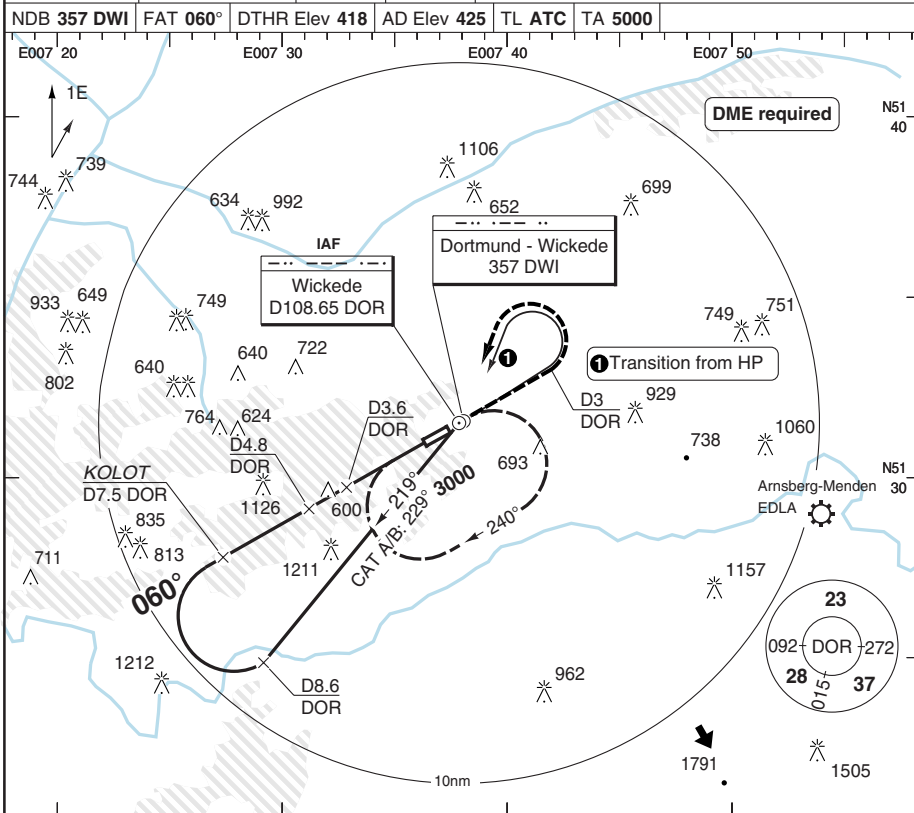
GS	100	120	140	160
ROD 3.0°	540	650	760	860

© Navtech - edlw04iaip00
EU OPS

FALS

NDB RWY 06

Langen RAD 125.225	Dortmund TWR 134.175	GND 121.825	ATIS 125.125
NDB 357 DWI	FAT 060°	DTHR Elev 418	AD Elev 425
TL ATC		TA 5000	



Climb on 060° to D3
DOR turn left
to DOR climbing to 3000.

MAPT D1.1 DOR

ACFT	NDB+DME	Note: Circling NA
A		
B	840 (430)	
C	1300m	
D		

DME	3.0°	LDA 1700x45
DOR	ALT	5577x147ft
7.4	2500	P 3° (53)
7	2360	
6	2040	
5	1720	
4	1400	
3	1080	
2.3	840	

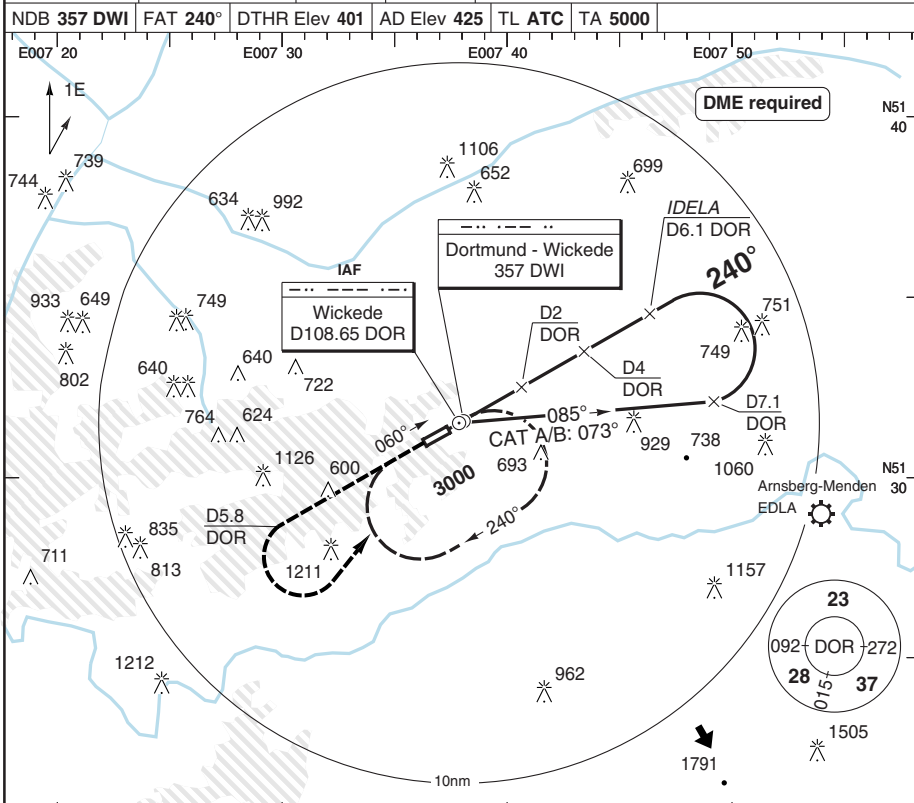
GS	100	120	140	160
ROD 3.0°	540	650	750	860

© Navitech - edlw05iaip00
EU OPS

FALS

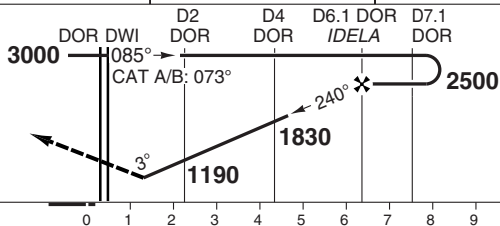
NDB RWY 24

Langen RAD 125.225	Dortmund TWR 134.175	GND 121.825	ATIS 125.125		
NDB 357 DWI	FAT 240°	DTHR Elev 401	AD Elev 425	TL ATC	TA 5000



MAPt DWI

Climb on 240° to D5.8
DOR turn left
to DOR climbing to **3000**.



TCH 50

ACFT	NDB+DME	Note: Circling NA			
A					
B	840 (440)				
C	1300m				
D					

DME	3.0°	LDA 1700x45
DOR	ALT	5577x147ft
6.1	2500	P 3° (53)
5	2160	
4	1840	
3	1520	
2	1190	
0.9	840	

GS	100	120	140	160
ROD 3.0°	540	650	760	860

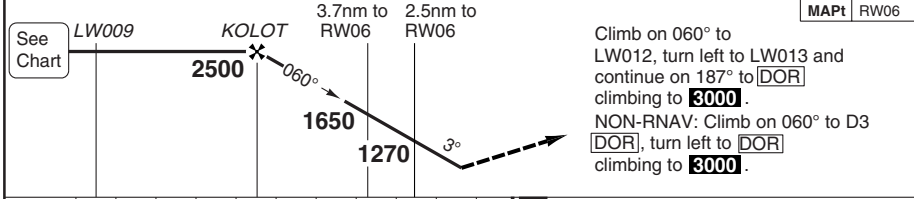
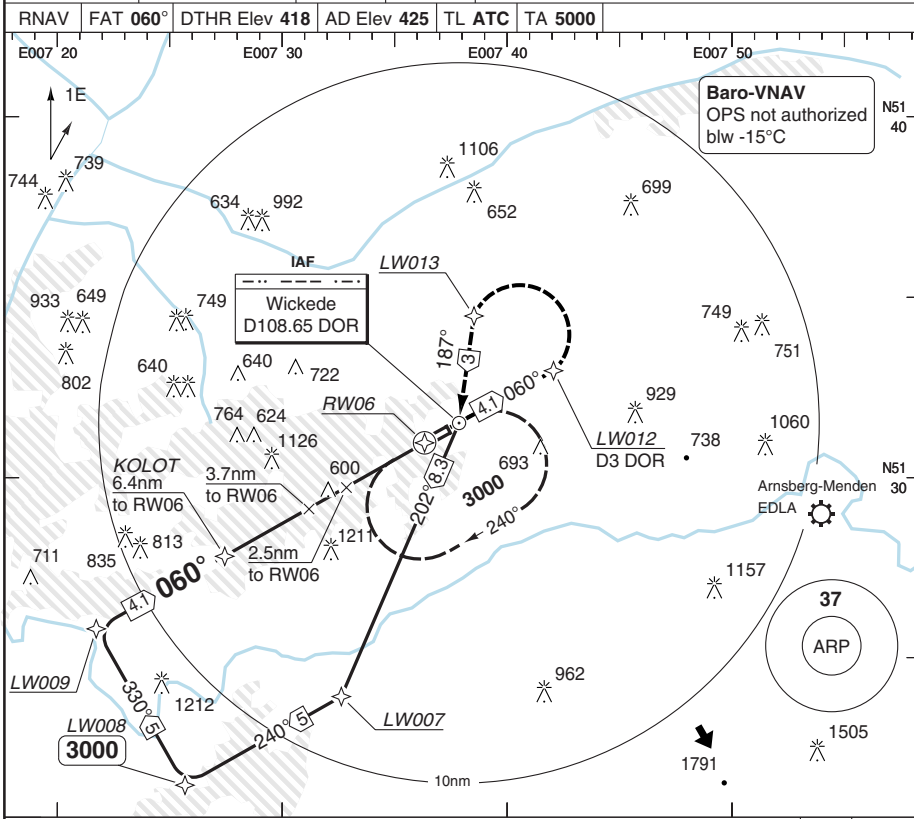
© Navitech - edlw08aiip00
EU OPS

FALS

Change: Minima.

RNAV RWY 06 GPS

Langen RAD 125.225	Dortmund TWR 134.175	GND 121.825	ATIS 125.125
RNAV	FAT 060°	DTHR Elev 418	AD Elev 425
TL ATC		TA 5000	



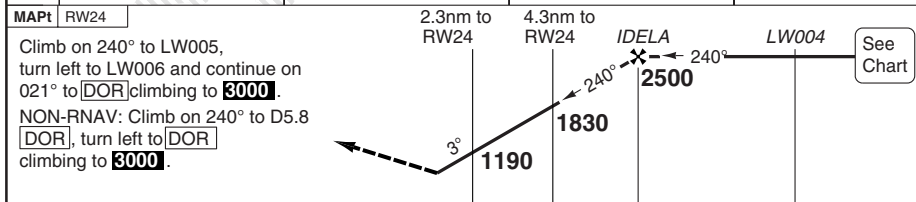
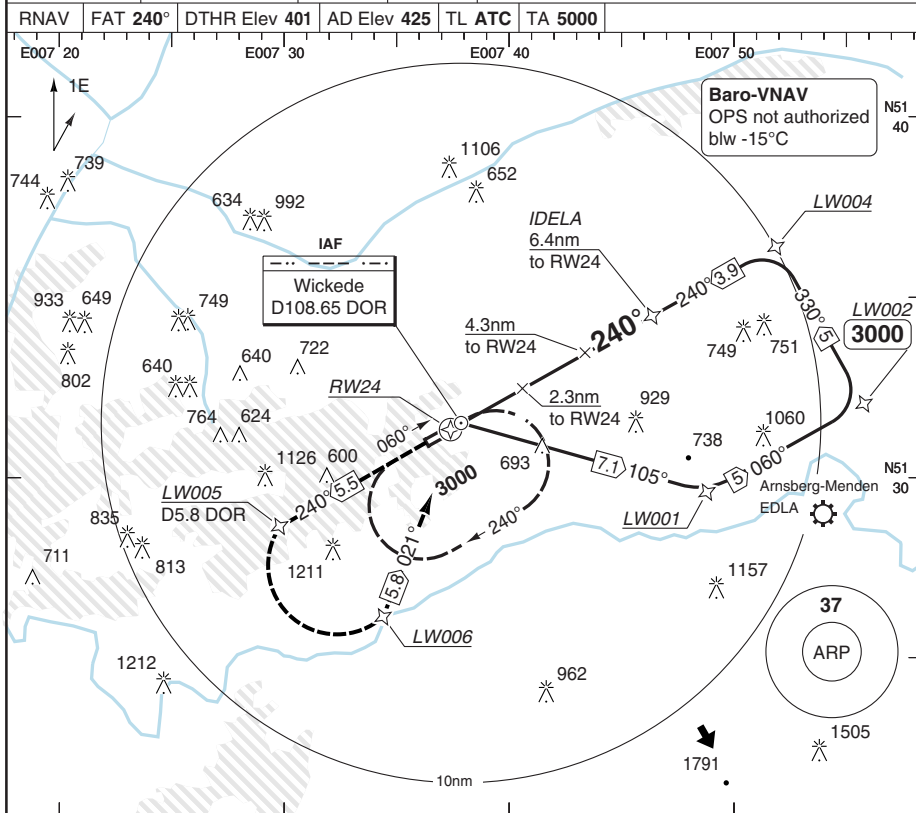
nm				TCH 50			
ACFT	LNAV/VNAV	LNAV	Note: Circling NA				
A			THR 06	3.0° ALT	LDA 1700x45		
B	810 (390)	850 (430)	6.3	2500	5577x147ft		
C	1100m	1300m	6	2400	P 3° (53)		
D			5	2080			
			4	1760			
			3	1430			
			2	1110			
			1.1	830			
GS	100	120	140	160			
ROD 3.0°	540	650	750	860			

© Navitech - edlw07iaip00

FALS

RNAV RWY 24 GPS

Langen RAD 125.225	Dortmund TWR 134.175	GND 121.825	ATIS 125.125
RNAV	FAT 240°	DTHR Elev 401	AD Elev 425
	TL ATC	TA 5000	



TCH 50

0 1 2 3 4 5 6 7 8 9 10 11 nm

ACFT	LNAV/VNAV	LNAV
A	660 (250) 550m	790 (390) 1100m
B	680 (270) 600m	
C	690 (280) 600m	
D	690 (280) 600m	

Note: Circling NA

THR 24	3.0° ALT	LDA 1700x45
6.4	2500	5577x147ft
6	2380	P 3° (53)
5	2060	
4	1740	
3	1420	
2	1100	
1.2	830	

GS	100	120	140	160
ROD 3.0°	540	650	760	860

© Navtech - edlw08iaip00

FALS

JAR-OPS Landing Minima

DORTMUND

The following Minima is for Public Transport aircraft and conforms to JAR-OPS1 regulations.

STRAIGHT-IN APPROACH		C				D			
R/W	Procedure	DA/ MDA QNH ft	DH/ MDH QFE ft	RVR m	RVR No ALS m	DA/ MDA QNH ft	DH/ MDH QFE ft	RVR m	RVR No ALS m
06	ILS	620	200	550	1000	620	200	550	1000
06	LLZ/DME	850	430	1000	1800	850	430	1400	2000
06	VOR/DME	930	510	1200	2000	930	510	1600	2000
06	NDB/DME	850	430	1000	1800	850	430	1400	2000
06	RNAV (L/VNAV)	810	390	1000	1800	810	390	1400	2000
06	RNAV (LNAV)	830	410	1000	1800	830	410	1400	2000
24	ILS	610	200	550	1000	610	200	550	1000
24	LLZ/DME	860	450	1200	2000	860	450	1600	2000
24	VOR/DME	890	480	1200	2000	890	480	1600	2000
24	NDB/DME	850	440	1000	1800	850	440	1400	2000
24	RNAV (L/VNAV)	710	300	1000	1800	710	300	1400	2000
24	RNAV (LNAV)	840	430	1000	1800	840	430	1400	2000

Notes:

CIRCLING		C			D		
R/W	Procedure	MDA QNH ft	MDH QFE ft	Vis m	MDA QNH ft	MDH QFE ft	Vis m
Not Authorised							

Notes:

TAKE-OFF		C	D
Runway	Facilities	m	m
06, 24	RCLL(H)+REDL(H)+Multi RVR (1)	125	150
06, 24	RCLL+REDL+Multi RVR	150	200
06, 24	RCLL+REDL	200	250
06, 24	RCL and/or REDL (2)	250	300
All	Nil (Day only)	500	500

Notes:

- (1) Subject to Approval.
- (2) For night operations, at least runway edge and end lights required.

JAR-OPS Landing Minima

DORTMUND

The following Minima is for Public Transport aircraft and conforms to JAR-OPS1 regulations.

STRAIGHT-IN APPROACH		A				B			
R/W	Procedure	DA/ MDA QNH ft	DH/ MDH QFE ft	RVR m	RVR No ALS m	DA/ MDA QNH ft	DH/ MDH QFE ft	RVR m	RVR No ALS m
06	ILS	620	200	550	1000	620	200	550	1000
06	LLZ/DME	850	430	900	1500	850	430	1000	1500
06	VOR/DME	930	510	1000	1500	930	510	1200	1500
06	NDB/DME	850	430	900	1500	850	430	1000	1500
06	RNAV (L/VNAV)	810	390	900	1500	810	390	1000	1500
06	RNAV (LNAV)	830	410	900	1500	830	410	1000	1500
24	ILS	610	200	550	1000	610	200	550	1000
24	LLZ/DME	860	450	1000	1500	860	450	1200	1500
24	VOR/DME	890	480	1000	1500	890	480	1200	1500
24	NDB/DME	850	440	900	1500	850	440	1000	1500
24	RNAV (L/VNAV)	710	300	900	1500	710	300	1000	1500
24	RNAV (LNAV)	840	430	900	1500	840	430	1000	1500

Notes:

CIRCLING		A			B		
R/W	Procedure	MDA QNH ft	MDH QFE ft	Vis m	MDA QNH ft	MDH QFE ft	Vis m
Not Authorised							

Notes:

TAKE-OFF		A	B
Runway	Facilities	m	m
06, 24	RCLL(H)+REDL(H)+Multi RVR (1)	125	125
06, 24	RCLL+REDL+Multi RVR	150	150
06, 24	RCLL+REDL	200	200
06, 24	RCL and/or REDL (2)	250	250
All	Nil (Day only)	500	500

Notes:

- (1) Subject to Approval.
- (2) For night operations, at least runway edge and end lights required.

JAR-OPS Landing Minima

DORTMUND

The following Minima is for Public Transport aircraft and conforms to JAR-OPS1 regulations.

CAT II

Special aircrew and aircraft certification required.

Runways	C				D			
	DA	DH	RA	RVR	DA	DH	RA	RVR
	QNH	QFE			QNH	QFE		
	ft	ft	ft	m	ft	ft	ft	m
06 (1)	518	100	93	300	522	104	97	350
24 (1)	505	104	104	300	518	117	127	350

Notes:

1) Cat D RVR may be reduced to 300m when conducting autoland.

Runways	A				B			
	DA	DH	RA	RVR	DA	DH	RA	RVR
	QNH	QFE			QNH	QFE		
	ft	ft	ft	m	ft	ft	ft	m
06	518	100	93	300	518	100	93	300
24	501	100	100	300	501	100	100	300

Notes: