

Airport information:

Country: Germany

City: NIEDERRHEIN

Coordinates: N 51° 36.2', E006 08.5

Elevation: 106

Customs: 0400 (0300) - 2300 (2200). Other times PPR 24HR

Fuel: 100LL, Jet A1

RFF: CAT 7, higher CAT O/R

hours: 0400-2300

Runways:

Runway 09

Takeoff length: 2440, Landing length: 2440

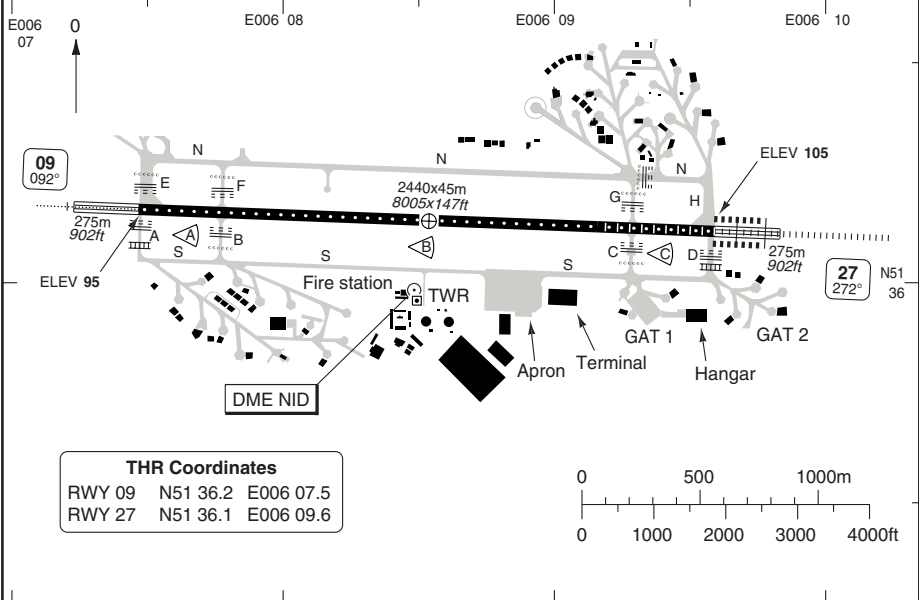
Runway 27

Takeoff length: 2440, Landing length: 2440

AERODROME

Niederrhein TWR 129.4	Langen RAD 128.5	Niederrhein ATIS 124.45
---------------------------------	----------------------------	-----------------------------------

AD Elev 106	ARP: N51 36.1 E006 08.5	RFF: CAT 7, Higher CAT AVBL O/R	AD HR: 04-23
--------------------	-------------------------	---------------------------------	--------------



RWY	Slope	TORA m/ft	LDA m/ft	ALS	REDL	RCLL	Additional
09	+0.1	2440 / 8005	2440 / 8005	H-E ①	H	15m	P 3°
27	-0.1	2440 / 8005	2440 / 8005	H-B	H	15m	P 3°

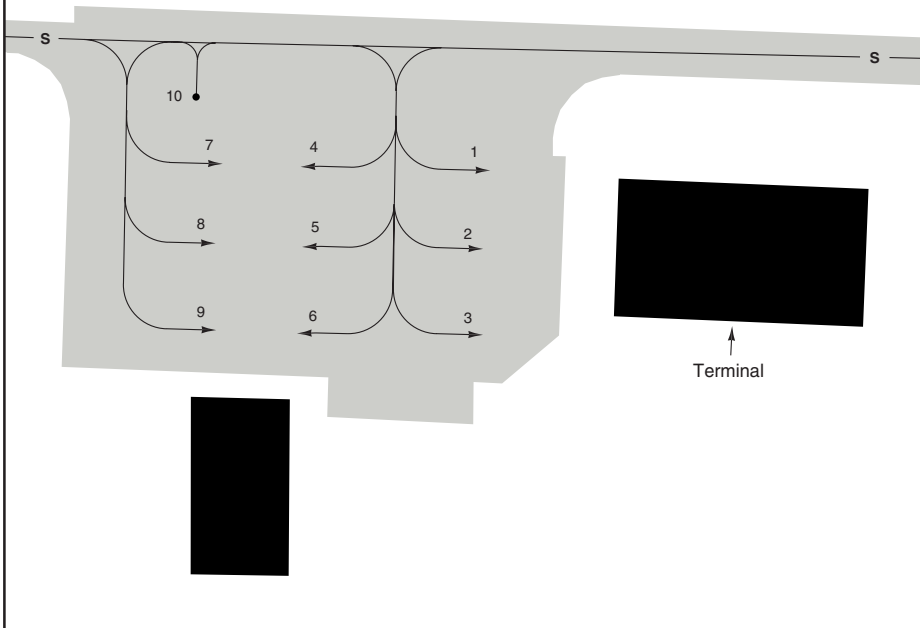
① 420m.

EU OPS		TAKE OFF MINIMA			
RWY	Facilities	RVR			
		A B C	D		
27	HRCLL + HREDL + Multiple RVR + HUD	Ap.O	LVTO	75m	75m
	HRCLL + HREDL + Multiple RVR	Ap.O	LVTO	125m	150m
	RCLL + REDL + Multiple RVR		LVTO	150m	200m
	RCLL + REDL		LVTO	200m	250m
09/27	RCL (day only) or RCL + REDL		LVTO	250m	300m
	RCL (day only) or RCL + REDL			400m	400m
	NIL (day only)			500m	500m

AERODROME

10 - 2

Niederrhein TWR 129.4	Langen RAD 128.5	Niederrhein ATIS 124.45
--------------------------	---------------------	----------------------------



GENERAL INFORMATION

1. TWY RESTRICTION

- 1.1 TWY A, B, C, F, G, S (W of Apron) width 15m/49ft.
- 1.2 Taxiing on TWY B, C MAX wingspan 36m/118ft, outer main gear span MAX 9m/30ft.
- 1.3 Taxiing on TWY F, G MAX wingspan 24m/79ft, outer main gear span MAX 6m/20ft.

2. NOISE ABATEMENT PROCEDURES

- 2.1 Noise certificated ACFT in accordance with ICAO Annex 16, VOL 1, Chapter 2:
- 2.2 Intersection take-offs not permitted.

3. WARNING

Intensive glider activity in the vicinity of EDLV to be expected.

4. LOW VISIBILITY PROCEDURES

- 4.1 Unaided taxiing only permitted on TWY A, S and D.
- 4.2 RWY may only be entered/vacated by TWY A and D.
- 4.3 Arriving aircraft shall wait for follow-me vehicle at junction of TWY S and apron.
- 4.4 Taxiing on apron by follow-me vehicle only.
- 4.5 Follow-me guidance from apron to take-off point by pilot request or ATC instruction.

SID RWY 09 **RNAV** GPS/FMS Overlay

Niederrhein TWR 129.4	Langen RAD 128.5	Niederrhein ATIS 124.45
---------------------------------	----------------------------	-----------------------------------

TA **5000** AD Elev **106**

WARNING
Close in obstacles.

3 SONEB 2R: Only for flights MNM **FL140**, other flights proceed via **EKRUM**. Expect CLR to cross 10nm prior SONEB MNM **FL140**. If unable, advice ATC.

CAUTION
Intensive glider activity in the vicinity of EDLV.

2 BRNAV EQPT required:
After D14.9 RKN.

LV104 **2**
N51 55.7
E006 39.8

SONEB
N52 01.4
E006 45.8

Niederrhein
352 LAA
N51 36.1
E006 10.4

LV105
N51 37.8
E006 22.0

3 SONEB 2R
SONEB 2R

LV103
N51 39.5
E006 32.0

ERKUM
N51 37.2
E006 41.8

4 ERKUM 1R
ERKU1R

4 BRNAV EQPT required:
After D7.6 NID.

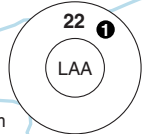
Niederrhein
115.5 NID
N51 36.0
E006 08.5

LV100
D8.7 NID
N51 35.8
E006 22.4

LV102
N51 33.7
E006 24.7

VEBAK
D43 RKN
N51 27.5
E006 20.9

1 Within German territory only



COM: Contact Langen RAD 128.5 after TKOF.

ALT RESTRICTION: Climb to **5000**.

MNM CLIMB GRADIENT: (Except VEBAK 2R) 7% or more until 3000.

SID	Routeing
ERKUM 1R	Climb on 092° - at D1.7 NID turn left - intop R254 HMM - at D7.6 NID turn right - 092° - ERKUM. RNAV: LV101 - LV105 - ERKUM.
SONEB 2R 3	Climb on 092° - at D1.7 NID turn left - intop R254 HMM - at D13.8 NID turn left - intop R196 RKN - at D14.9 RKN turn right - 032° - SONEB. RNAV: LAA - LV101 - LV103 - LV104 - SONEB.
VEBAK 2R	Climb on 091° via LAA - at D8.7 NID turn right - intop R200 RKN - VEBAK. RNAV: LAA - LV100 - LV102 - VEBAK.

SID RWY 27 RNAV GPS/FMS Overlay

Niederrhein TWR 129.4	Langen RAD 128.5	Niederrhein ATIS 124.45
---------------------------------	----------------------------	-----------------------------------

TA **5000** AD Elev **106**

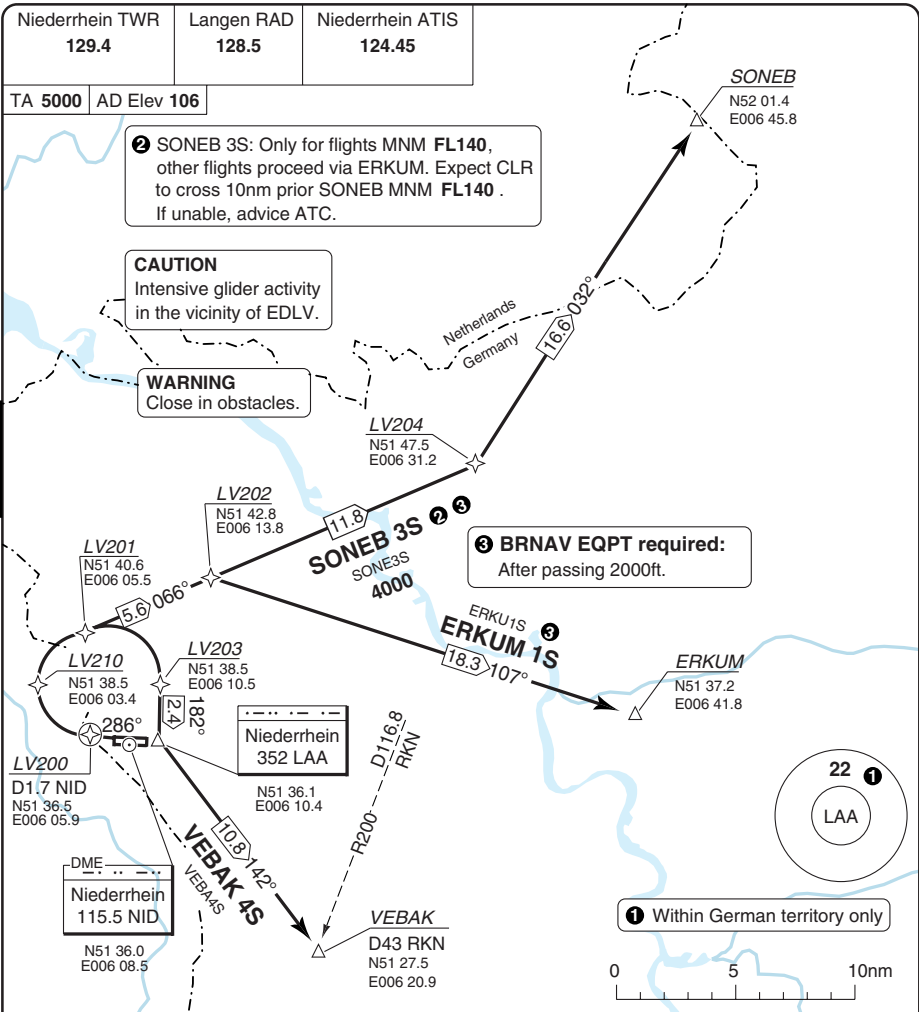
② **SONEB 3S**: Only for flights MNM **FL140**, other flights proceed via **ERKUM**. Expect CLR to cross 10nm prior **SONEB MNM FL140**. If unable, advice ATC.

CAUTION
Intensive glider activity in the vicinity of EDLV.

WARNING
Close in obstacles.

③ **BRNAV EQPT required:**
After passing 2000ft.

30 - 2



COM: Contact Langen RAD 128.5 after TKOF.

ALT RESTRICTION: Climb to **5000**.

MNM CLIMB GRADIENT: 7% or more until 3000.

SID	Routeing
(INITIAL CLIMB)	Climb on 286° at D1.7 NID - turn right - follow SID.
ERKUM 1S	066° - at LV202 turn right - 107° - ERKUM. RNAV: LV200 - LV210 - LV201 - LV202 - ERKUM.
SONEB 3S ②	066° - at LV204 turn left - 032° - SONEB. RNAV: LV200 - LV210 - LV201 - LV204 - SONEB.
VEBAK 4S	LAA - turn left - 142° - VEBAK. RNAV: LV200 - LV210 - LV201 - LV203 - LAA - VEBAK.

© Navitech - edlv02daorg0

Change: New spec.

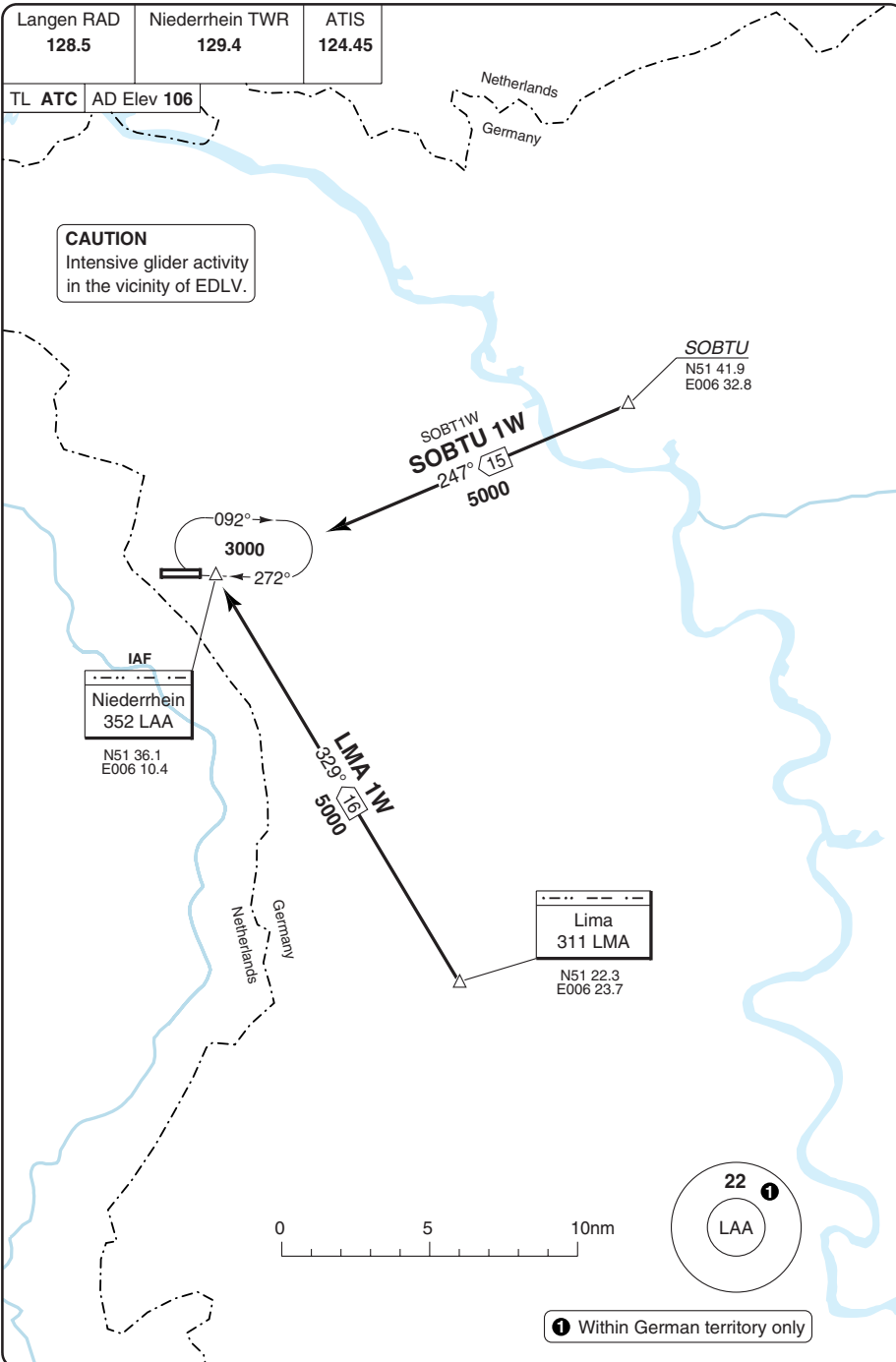
STAR

Langen RAD 128.5	Niederrhein TWR 129.4	ATIS 124.45
---------------------	--------------------------	----------------

TL ATC AD Elev 106

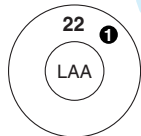
CAUTION

Intensive glider activity
in the vicinity of EDLV.



40 - 1

© Navitech - edlv01aaorg0



① Within German territory only

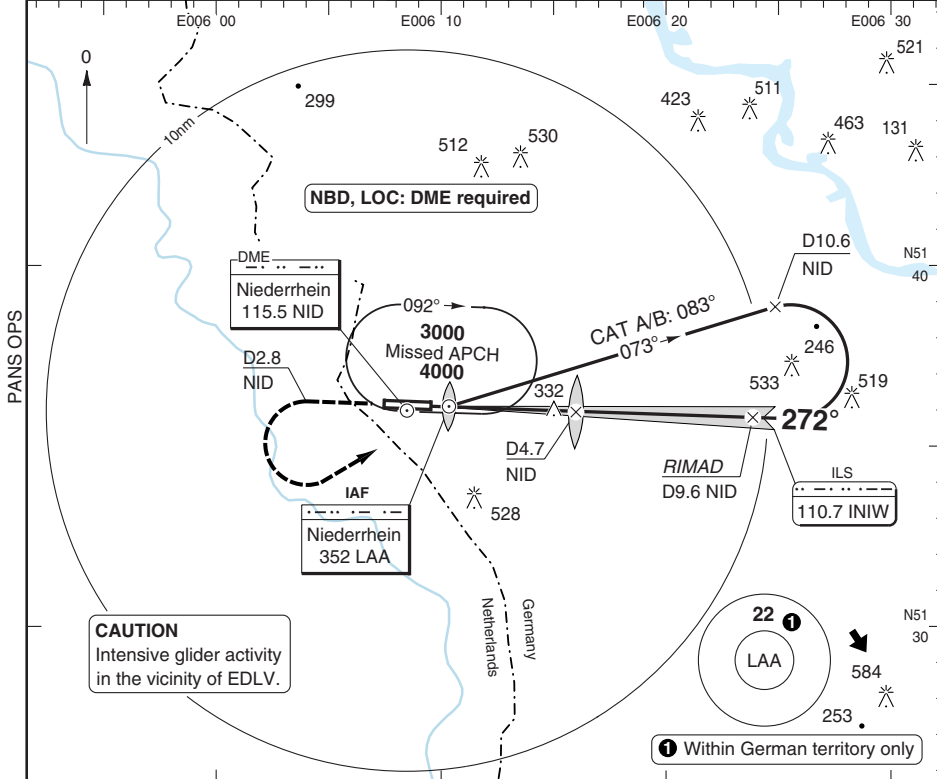
Change: New spec.

THIS CHART IS A PART OF NAVIGRAPH NDAC AND IS INTENDED FOR FLIGHT SIMULATION USE ONLY

ILS OR NDB RWY 27

Langen RAD 128.5	Niederrhein TWR 129.4	ATIS 124.45
---------------------	--------------------------	----------------

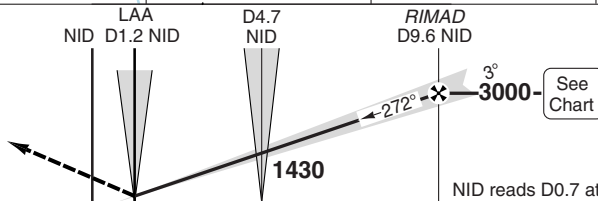
ILS 110.7 INIW	FAT 272°	THR Elev 105	AD Elev 106	TL ATC	TA 5000
----------------	----------	--------------	-------------	--------	---------



50 - 1

MAPt LAA / D1.2 NID / MM

Climb on 272°. At D2.8 [NID], turn left to [LAA] climbing to 3000. Climb in HP to 4000.



NID reads D0.7 at THR

TCH 50

ACFT	CAT III/B	ACFT	CAT II	ILS	LOC+DME	NDB+DME
ALL	Available	A				
		B	RA 105 300m	310 (200) 550m	550 (450) 1400m	580 (480) 1500m
		C				
		D				

Note: Circling NA

GS	80	100	120	140	160
ROD 3.0°	430	540	640	750	860

DME NID	3.0° ALT	LDA 2440x45 8005x147ft P 3°
9.6	3000	
8	2490	
7	2170	
6	1850	
5	1530	
4	1210	
3	890	
1.9	550	

JAR-OPS Landing Minima

NIEDERRHEIN

The following Minima is for Public Transport aircraft and conforms to JAR-OPS1 regulations.

STRAIGHT-IN APPROACH		C				D			
R/W	Procedure	DA/ MDA QNH ft	DH/ MDH QFE ft	RVR m	RVR No ALS m	DA/ MDA QNH ft	DH/ MDH QFE ft	RVR m	RVR No ALS m
09	NDB/DME	680	580	1600	2000	680	580	1800	2000
27	ILS	310	200	550	1000	310	200	550	1000
27	LOC/DME	560	450	1200	2000	560	450	1600	2000
27	NDB/DME	590	480	1200	2000	590	480	1600	2000

Notes:

CIRCLING		C			D		
R/W	Procedure	MDA QNH ft	MDH QFE ft	Vis m	MDA QNH ft	MDH QFE ft	Vis m
Not authorised							

Notes:

TAKE-OFF		C	D
Runway	Facilities	m	m
09, 27	RCLL(H)+REDL(H)+Multi RVR (1)	125	150
09, 27	RCLL+REDL+Multi RVR	150	200
09, 27	RCLL+REDL	200	250
09, 27	RCL and/or REDL (2)	250	300
All	Nil (Day only)	500	500

Notes:

(1) Subject to Approval.

(2) For night operations, at least runway edge and end lights required.

JAR-OPS Landing Minima

NIEDERRHEIN

The following Minima is for Public Transport aircraft and conforms to JAR-OPS1 regulations.

STRAIGHT-IN APPROACH		A				B			
R/W	Procedure	DA/ MDA QNH ft	DH/ MDH QFE ft	RVR m	RVR No ALS m	DA/ MDA QNH ft	DH/ MDH QFE ft	RVR m	RVR No ALS m
09	NDB/DME	680	580	1400	1500	680	580	1500	1500
27	ILS	310	200	550	1000	310	200	550	1000
27	LOC/DME	560	450	1000	1500	560	450	1200	1500
27	NDB/DME	590	480	1000	1500	590	480	1200	1500

Notes:

CIRCLING		A			B		
R/W	Procedure	MDA QNH ft	MDH QFE ft	Vis m	MDA QNH ft	MDH QFE ft	Vis m
Not authorised							

Notes:

TAKE-OFF		A	B
Runway	Facilities	m	m
09, 27	RCLL(H)+REDL(H)+Multi RVR (1)	125	125
09, 27	RCLL+REDL+Multi RVR	150	150
09, 27	RCLL+REDL	200	200
09, 27	RCL and/or REDL (2)	250	250
All	Nil (Day only)	500	500

Notes:

- (1) Subject to Approval.
- (2) For night operations, at least runway edge and end lights required.

JAR-OPS Landing Minima

NIEDERRHEIN

The following Minima is for Public Transport aircraft and conforms to JAR-OPS1 regulations.

CAT II

Special aircrew and aircraft certification required.

Runways	C				D			
	DA	DH	RA	RVR	DA	DH	RA	RVR
	QNH	QFE			QNH	QFE		
	ft	ft	ft	m	ft	ft	ft	m
27 (1)	205	100	105	300	205	100	105	350

Notes:

1) Cat D RVR may be reduced to 300m when conducting autoland.

Runways	A				B			
	DA	DH	RA	RVR	DA	DH	RA	RVR
	QNH	QFE			QNH	QFE		
	ft	ft	ft	m	ft	ft	ft	m
27	205	100	105	300	205	100	105	300

Notes: