

## Airport information:

Country: Germany

City: PADERBORN

Coordinates: N 51° 36.9', E008 37.0

Elevation: 699

Customs: Customs: H24

Fuel: 100LL, Jet A1

RFF: CAT 7, CAT 8 O/R.

hours: AD: 0500-2100, other times PPR. ATS: H24

## Runways:

Runway 06

Takeoff length: 2180, Landing length: 2180

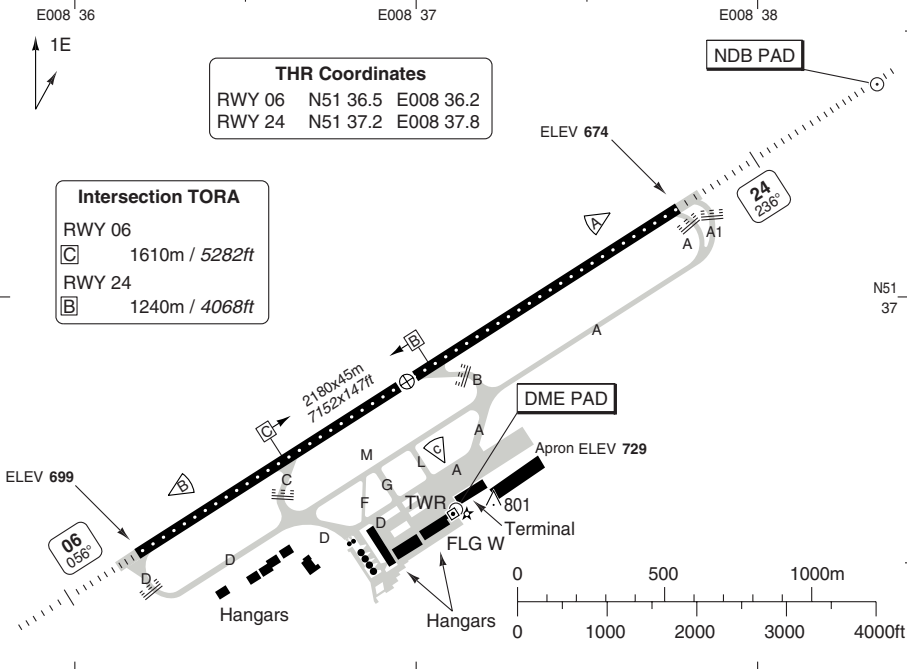
Runway 24

Takeoff length: 2180, Landing length: 2180

# AERODROME

Paderborn GND <b>121.925</b>	TWR <b>133.375</b>	Langen RAD <b>125.225</b>	ATIS <b>125.725</b>
---------------------------------	-----------------------	------------------------------	------------------------

AD Elev <b>699</b>	ARP: N51 36.8 E008 37.0	RFF: CAT 7. O/R 8	AD HR: H24
--------------------	-------------------------	-------------------	------------



RWY	Slope	TORA m/ft	LDA m/ft	ALS	REDL	RCLL	Additional
06	- 0.3	2180 / 7152	2180 / 7152	H-D ①	H ②	15m	P 3° (41), REIL
24	+0.3	2180 / 7152	2180 / 7152	H-D	H ②	15m	P 3° (60), REIL

① 485m. ② White.

**EU OPS TAKE OFF MINIMA**

RWY	Facilities	RVR			
		A	B	C	D
06/24	RCLL + REDL + Multiple RVR	<b>LVTO</b>	150m		200m
	RCLL + REDL	<b>LVTO</b>	200m		250m
	RCL (day only) or RCL + REDL	<b>LVTO</b>	250m		300m
	RCL (day only) or RCL + REDL		400m		400m
	NIL (day only)		500m		500m

© Navitech - edlp01laorg0

Change: New spec.

**THIS CHART IS A PART OF NAVIGRAPH NDAC AND IS INTENDED FOR FLIGHT SIMULATION USE ONLY**

**AERODROME**

10 - 2

**GENERAL**

1. **SPEED**  
MAX 250kt below FL100.
2. **LOW VISIBILITY PROCEDURES**  
TKOF Procedure AVBL by TWR.

**ARRIVAL****1. NOISE ABATEMENT PROCEDURE**

- 1.1. Arrange flight to leave IAF at a speed which permits OPS in clean configuration. Maintain speed until 12nm from TDP. 210kt +/- 10kt. recommended.
- 1.2. Recommended 160kt +/- 10kt to OM with intermediate flap setting. This phase will normally include the transition from level flight to descent on the glide path which should be intercepted at a height of not lower than 3000ft above touchdown zone elevation.
- 1.3. Landing configuration should be established shortly prior to or over the OM.

**DEPARTURE****1. NOISE ABATEMENT PROCEDURES**

- 1.1. Noise certified ACFT in accordance with ICAO Annex 16, Chapter 2:
  - a) TKOF to 1500ft GND
    - take-off power
    - take-off flaps
    - climb at V2+10kt
  - b) At 1500ft GND
    - reduce power to not less than climb power
  - c) From 1500ft GND to 3000ft GND
    - climb at V2+10kt
  - d) At 3000ft GND
    - acceleration during climb and retraction of flaps.
    - normal transition to enroute climb
- 1.2. Noise certified ACFT in accordance with ICAO Annex 16, Chapter 3:
  - a) TKOF to 1500ft GND
    - take-off power
    - take-off flaps
    - climb at V2+10kt
  - b) At 1500ft GND
    - reduce power to not less than climb power
    - acceleration during climb and retraction of flaps.
    - normal transition to enroute climb

Change: New spec.

© Navtech - edlp01daorg0

Paderborn GND 121.925	TWR 133.375	Langen RAD 125.225	ATIS 125.725
--------------------------	----------------	-----------------------	-----------------

TA 5000 AD Elev 699

D115.65 HMM  
DOMEG

No radar contact at or below 2000ft



② Only for ACFT with DEST EDDK and with Y flight plans. For flights intending to proceed via Z841.

Paderborn-Lippstadt  
354 PAD

N51 37.4  
E008 38.4

DME  
Paderborn-Lippstadt  
108.5 PAD

N51 36.6  
E008 37.1

① 1.1nm

LP102  
N51 42.8  
E008 41.3

LP103  
N51 40.3  
E008 37.2

LP101  
N51 39.0  
E008 42.4

LP104  
N51 39.1  
E008 46.5

Caution  
VFR traffic up to 1900ft

WRB8X  
WARBURG 8X  
15.3% / 24°

Warburg D113.7 WRB

**NOTE:** Close in obstacles.  
**COM:** Contact Langen RAD 125.225 after TKOF.  
**SPEED:** MAX 250kt below FL100.  
**MNM CLIMB GRADIENT:** (Except Warburg 8X) 8.3% to D4.1 PAD.  
 Warburg 8X: 8.3% to D5.6 PAD.

**ALT RESTRICTION:** Climb to **5000**



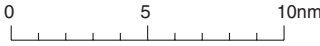
MABAB  
N51 25.0  
E008 04.1

GMH9X

GERMINGHAUSEN 9X ②  
239° / 24.8%



Germinghausen D115.4 GMH



SID	Routeing	Altitudes
DOMEG 2X	Climb on 056° - LP101 - LP102 - LP105 - DOMEG.	LP101 MNM 2400
GERMINGHAUSEN 9X ②	Climb on 056° - LP101 - LP103 - PAD - MABAB - GMH.	LP101 MNM 2400
HAMM 7X	Climb on 056° - LP101 - LP102 - HMM.	LP101 MNM 2400
WARBURG 8X	Climb on 056° - LP100 - LP104 - WRB.	LP100 MNM 1700 LP104 MNM 3500

SID RWY 24 **RNAV** GPS/FMS Overlay

Lippstadt **PADERBORN**

Paderborn GND 121.925	TWR 133.375	Langen RAD 125.225	ATIS 125.725
--------------------------	----------------	-----------------------	-----------------

TA 5000 | AD Elev 699

Hamm  
D115.65 HMM

**Caution**  
VFR traffic up to 1900ft

N51 51.4  
E007 42.5

HMM5W  
**HAMM 5W**  
18.6

LP203  
N51 42.6  
E008 08.9

Paderborn-Lippstadt  
354 PAD

N51 37.4  
E008 38.4

DOMEG2W  
**DOMEG 2W**  
269° 21

LP200  
N51 34.8  
E008 31.9

LP201  
N51 34.1  
E008 30.3

1.2nm

② Only for ACFT with DEST EDDK and with Y flight plans. For flights intending to proceed via Z841.

WRB7W  
**WARBURG 7W**  
21.6 089°

GMH8W  
**GERMINGHAUSEN 8W** ②  
239° 23.1

LP202  
N51 30.4  
E008 32.1

MABAB  
N51 25.0  
E008 04.1

Germinghausen  
D115.4 GMH

N51 10.2  
E007 53.5

No radar contact at or below 2000ft



**NOTE:** Close in obstacles.  
**COM:** Contact Langen RAD 125.225 after TKOF.  
**SPEED:** MAX 250kt below FL100.  
**ALT RESTRICTION:** Climb to **5000**.

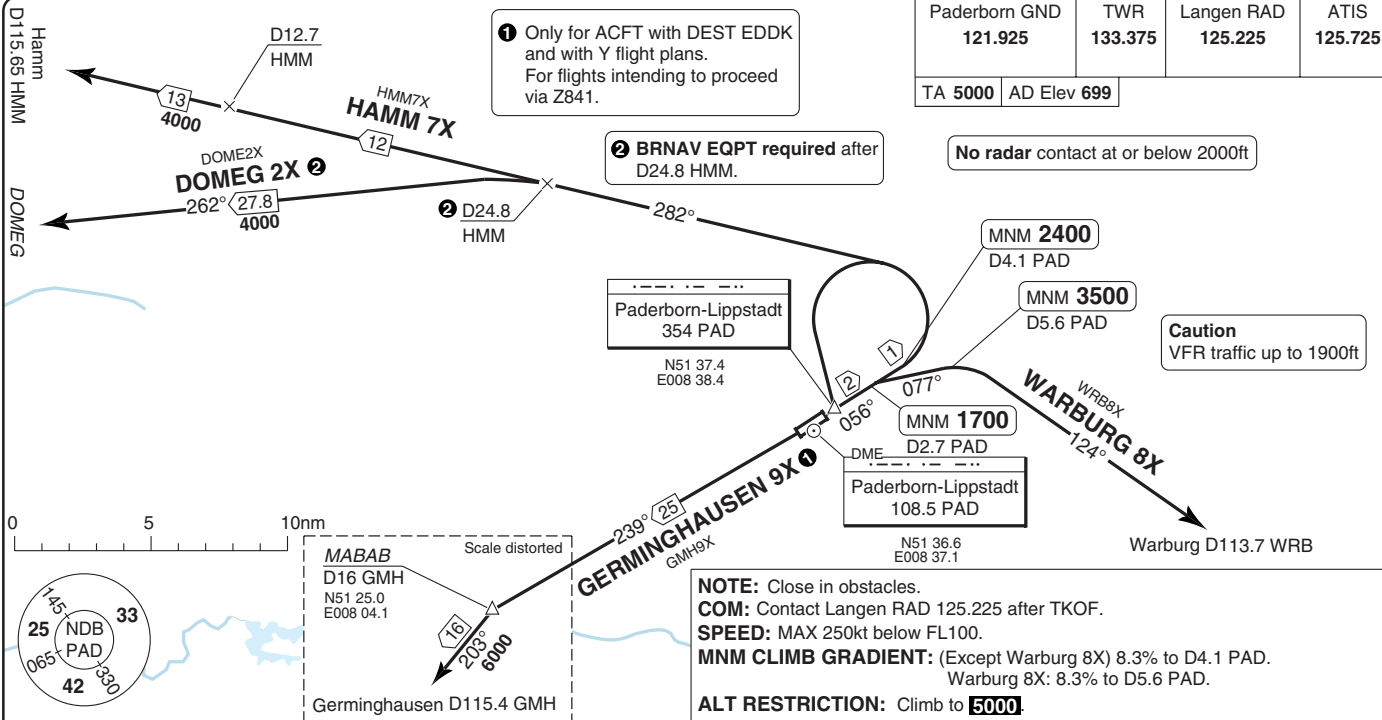
SID	Routeing
DOMEG 2W	Climb on 236° - LP200 - LP203 - DOME2W.
GERMINGHAUSEN 8W ②	Climb on 236° - MABAB - GMH.
HAMM 5W	Climb on 236° - LP200 - HMM.
WARBURG 7W	Climb on 236° - LP201 - LP202 - WRB.

Change: New spec.

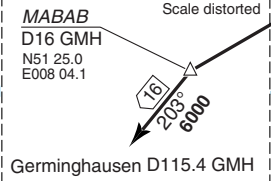
THIS CHART IS A PART OF NAVIGRAPH NDAC AND IS INTENDED FOR FLIGHT SIMULATION USE ONLY

© Navtech - edlp03daorg0

Change: New spec.



Paderborn GND <b>121.925</b>	TWR <b>133.375</b>	Langen RAD <b>125.225</b>	ATIS <b>125.725</b>
TA <b>5000</b> AD Elev <b>699</b>			



SID	Routeing	Altitudes
<b>DOME2X 2</b>	Climb on 056° to D4.1 PAD - turn left - intcp R102 HMM to D24.8 HMM - turn left - 262° - DOME2X.	D4.1 PAD MNM 2400
<b>GERMINGHAUSEN 9X 1</b>	Climb on 056° to D4.1 PAD - turn left to PAD - 239° from PAD - MABAB - turn left - R023 GMH - GMH.	D4.1 PAD MNM 2400
<b>HAMM 7X</b>	Climb on 056° to D4.1 PAD - turn left - intcp R102 HMM - HMM.	D4.1 PAD MNM 2400
<b>WARBURG 8X</b>	Climb on 056° to D2.7 PAD - turn right - 077° to D5.6 PAD - turn right - intcp R304 WRB - WRB.	D2.7 PAD MNM 1700 D5.6 PAD MNM 3500

SID RWY 06

30 - 3 09 MAR 12

Lipstadt PADERBORN

Germany - EDLP / PAD

# SID RWY 24

# Lippstadt PADERBORN

Paderborn GND 121.925	TWR 133.375	Langen RAD 125.225	ATIS 125.725
--------------------------	----------------	-----------------------	-----------------

TA 5000 | AD Elev 699

Hamm  
D115.65 HMM

N51 51.4  
E007 42.5

**Caution**  
VFR traffic up to 1900ft

HMM5W  
HAMM 5W  
13  
4000

D12.6  
HMM

Paderborn-Lippstadt  
354 PAD

DME  
Paderborn-Lippstadt  
108.5 PAD  
N51 37.4  
E008 38.4  
N51 36.6  
E008 37.1

DOMEG2W  
DOMEG 2W  
21  
4000

D19.9  
HMM

③ BRNAV EQPT required after  
D19.9 HMM.

No radar contact at or below 2000ft

D2.4  
PAD

236°

WARBURG 7W  
WRB7W

① GERMINGHAUSEN 8W: 239°

② Only for ACFT with DEST EDDK  
and with Y flight plans.  
For flights intending to proceed  
via Z841.

MABAB  
D16 GMH  
N51 25.0  
E008 04.1

GMH8W  
GERMINGHAUSEN 8W  
23  
239°

Germinghausen  
D115.4 GMH

N51 10.2  
E007 53.5

0 5 10nm



**NOTE:** Close in obstacles.  
**COM:** Contact Langen RAD 125.225 after TKOF.  
**SPEED:** MAX 250kt below FL100.  
**ALT RESTRICTION:** Climb to **5000**.

SID	Routeing
DOMEG 2W ③	Climb on 236° to D2.4 PAD - turn right - intcp R117 HMM to D19.9 HMM - turn left - 269° - DOME G.
GERMINGHAUSEN 8W ②	Climb on 239° from PAD - MABAB - turn left - intcp R023 GMH - GMH.
HAMM 5W	Climb on 236° to D2.4 PAD - turn right - intcp R117 HMM - HMM.
WARBURG 7W	Climb on 236° to D4.9 PAD - turn left - intcp R269 WRB - WRB.

Change: New spec.

© Navtech - edlp01aaorg0

Langen RAD 125.225	Paderborn TWR 133.375	GND 121.925	ATIS 125.725
-----------------------	--------------------------	----------------	-----------------

TL ATC AD Elev 699

Change: New spec.

THIS CHART IS A PART OF NAVIGRAPH NDAC AND IS INTENDED FOR FLIGHT SIMULATION USE ONLY

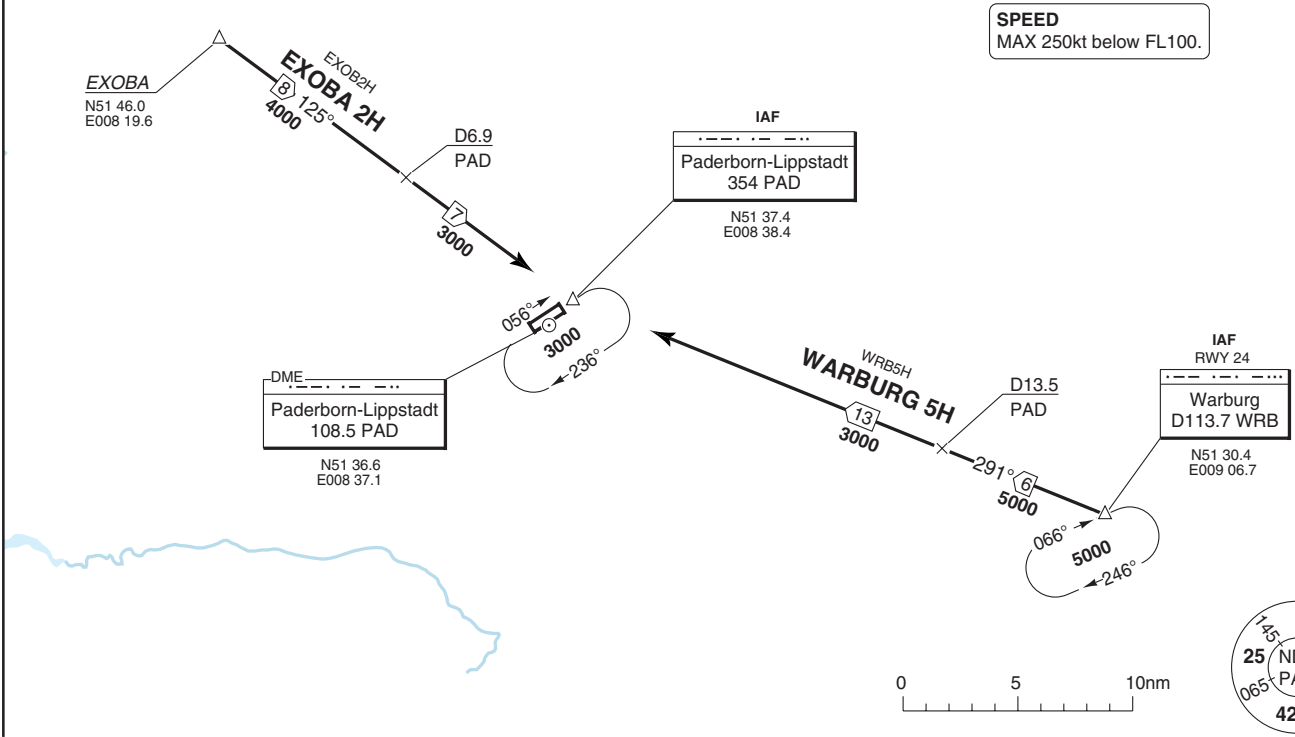
STAR from East, West

40 - 1 | 09 MAR 12

Lipstadt PADERBORN

Germany - EDLP / PAD

SPEED  
MAX 250kt below FL100.



40 - 1

Langen RAD 125.225	Paderborn TWR 133.375	GND 121.925	ATIS 125.725
-----------------------	--------------------------	----------------	-----------------

TL ATC AD Elev 699

**BRNAV EQPT required.**

**SPEED**  
MAX 250kt below FL100.

**PADBA**  
D12 GMH  
N51 18.7  
E007 40.7

R0315

PADB3H  
**PADBA 3H**  
27.6 061°  
6000

Germinghausen  
D115.4 GMH  
N51 10.2  
E007 53.5

**TULDO**  
D27 GMH  
N51 31.5  
E008 19.8

R036

DME  
Paderborn-Lippstadt  
108.5 PAD  
N51 36.6  
E008 37.1

PELU2H  
**PELUN 2H**  
15 008°  
6000

R084

**PELUN**  
D24 GMH  
D29 WRB  
N51 12.1  
E008 31.6

R229 D113.7  
WRB

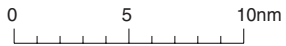
D10.1  
PAD

IAF  
Paderborn-Lippstadt  
354 PAD  
N51 37.4  
E008 38.4

056°

3000

236°

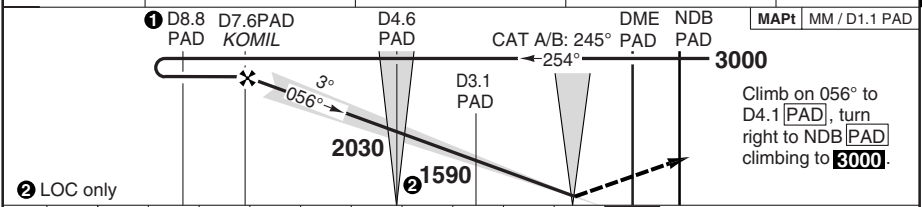
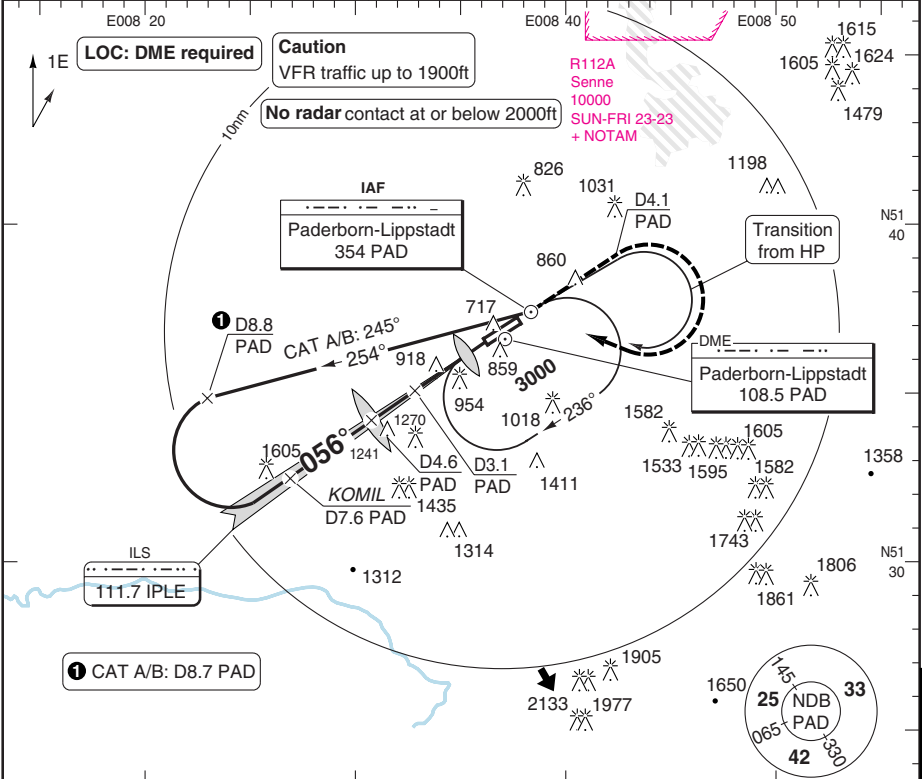


# ILS RWY 06

# Lippstadt PADERBORN

Langen RAD 125.225	Paderborn TWR 133.375	GND 121.925	ATIS 125.725
-----------------------	--------------------------	----------------	-----------------

ILS 111.7 IPLE	FAT 056°	THR Elev 699	AD Elev 699	TL ATC	TA 5000
----------------	----------	--------------	-------------	--------	---------



np 11 10 9 8 7 6 5 4 3 2 1 0 TCH 57

ACFT	ILS	LOC+DME	Circling <sup>a</sup>
A	900 (200) 750m	1150 (450) 1500m	1250 (551) 1.5km
B			1250 (551) 1.6km
C	1150 (450) 1700m	1150 (450) 1700m	1670 (971) 2.4km
D			1670 (971) 3.6km

<sup>a</sup> North of AD only.

DME PAD	3.2° ALT	LDA 2180x45 7152x147ft P 3° (41)
7.3	3000	
6	2570	
5	2230	
4	1900	
3	1560	
2	1220	
1.8	1150	

GS	80	100	120	140	160
ROD 3.2°	450	570	680	790	900

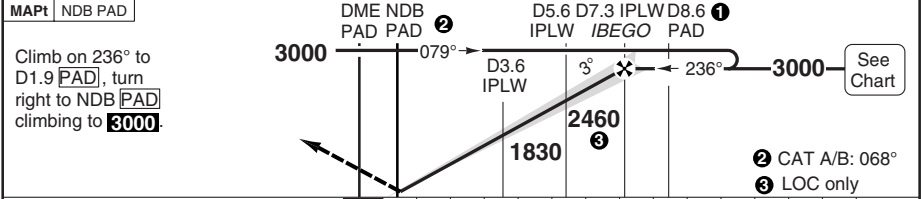
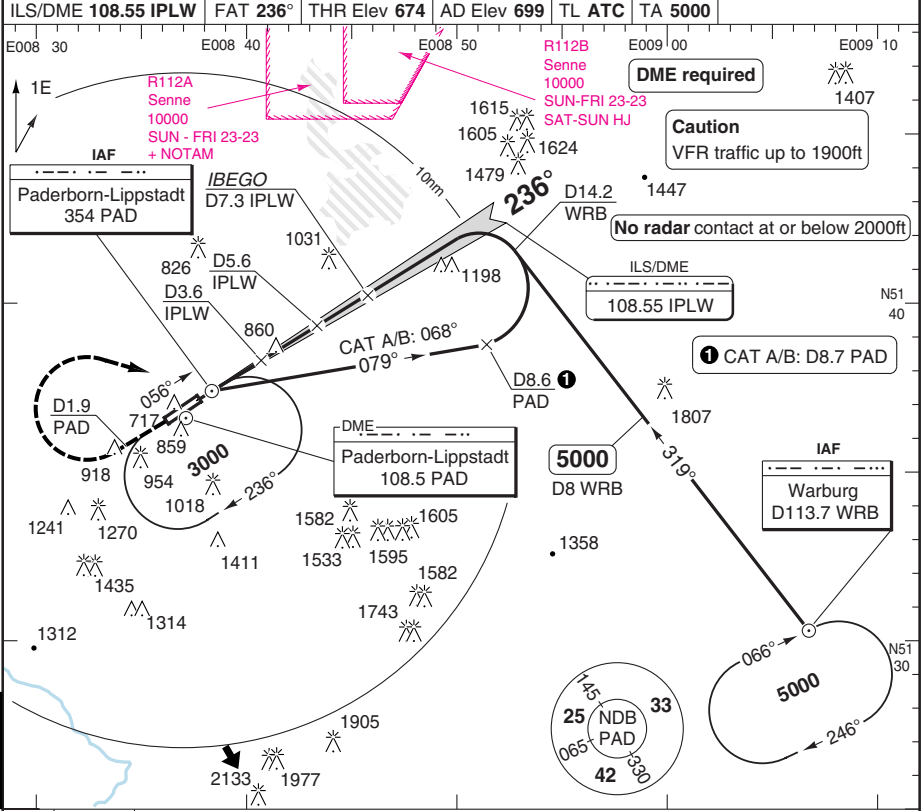
485

© Navtech - edlp01iaip00

50 - 1

# ILS RWY 24

Langen RAD 125.225	Paderborn TWR 133.375	GND 121.925	ATIS 125.725
ILS/DME 108.55 IPLW		FAT 236°	THR Elev 674
AD Elev 699		TL ATC	TA 5000



TCH 64																	
ACFT	ILS+DME	LOC+DME	Circling <sup>ⓐ</sup>														
A	880 (200) 550m	1130 (450) 1400m	1250 (551) 1.5km	ⓐ North of AD only.													
B			1250 (551) 1.6km	DME 3.1°	LDA 2180x45												
C			1670 (971) 2.4km	7.2 3000	7152x147ft												
D			1670 (971) 3.6km	6 2610	P 3° (60)												
<table border="1"> <tr> <td>GS</td> <td>80</td> <td>100</td> <td>120</td> <td>140</td> <td>160</td> </tr> <tr> <td>ROD 3.1°</td> <td>440</td> <td>550</td> <td>660</td> <td>760</td> <td>870</td> </tr> </table>						GS	80	100	120	140	160	ROD 3.1°	440	550	660	760	870
GS	80	100	120	140	160												
ROD 3.1°	440	550	660	760	870												

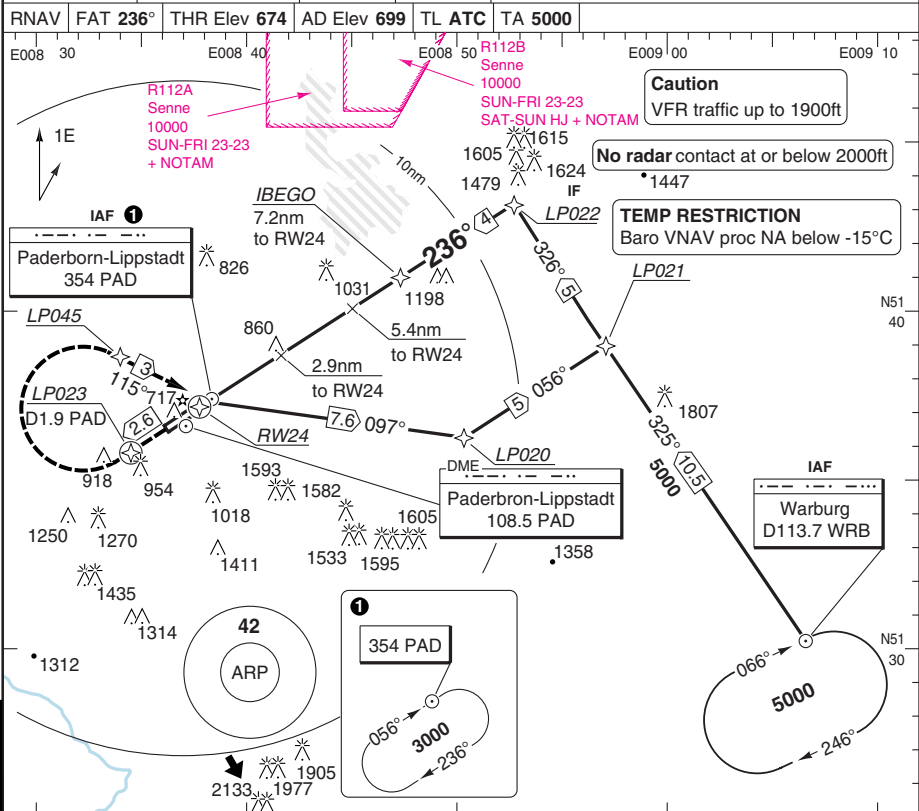
© Navtech - edlp02iaip00



# RNAV (GPS) RWY 24

## Lippstadt PADERBORN

Langen RAD 125.225	Paderborn TWR 133.375	GND 121.925	ATIS 125.725
RNAV	FAT 236°	THR Elev 674	AD Elev 699
		TL ATC	TA 5000



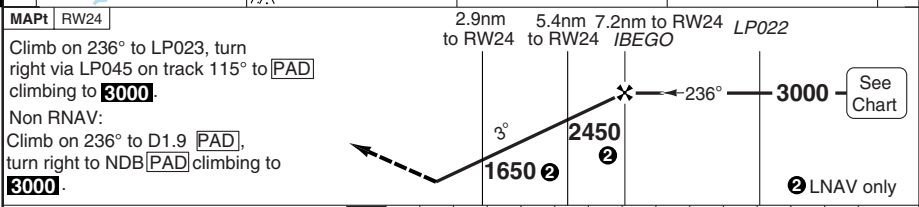
**Caution**  
VFR traffic up to 1900ft

**No radar contact** at or below 2000ft

**TEMP RESTRICTION**  
Baro VNAV proc NA below -15°C

PANS OPS

50 - 4



TCH 50	0	1	2	3	4	5	6	7	8	9	10	11	12	13	14	nm
--------	---	---	---	---	---	---	---	---	---	---	----	----	----	----	----	----

ACFT	LNAV/VNAV		LNAV			Note: Circling NA	THR	3.0°	LDA 2180x45 7152x147ft P 3° (60)
	A	1040 (370) 1000m	1110 (440) 1300m	24	ALT		3000		
	B	1050 (380) 1000m		6	2650				
	C			5	2330				
D	4			2010					
	GS	80	100	120	140	160	3	1690	
	ROD 3.0°	430	540	640	750	860	2	1370	
							1.2	1110	

© Navtech - edlp04iaip00

Change: New spec.

**THIS CHART IS A PART OF NAVIGRAPH NDAC AND IS INTENDED FOR FLIGHT SIMULATION USE ONLY**