

Airport information:

Country: Germany

City: HAMBURG FINKENWERDER

Coordinates: N 53° 32.1', E009 50.1

Elevation: 22

Customs: Customs: PPR

Fuel: Jet A1

RFF: CAT 9

hours: PPR H24

Runways:

Runway 05

Takeoff length: 3183, Landing length: 2526

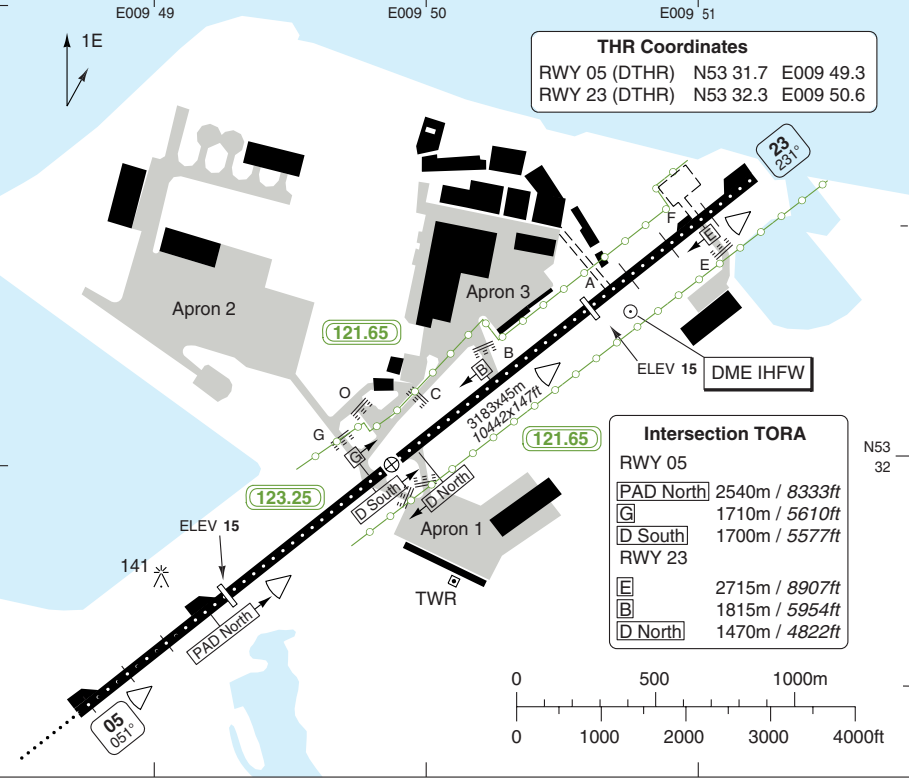
Runway 23

Takeoff length: 2935, Landing length: 2518

AERODROME

Finkenwerder APRON 121.65	TWR 123.25	Bremen RAD 134.25 136.675
-------------------------------------	----------------------	---

AD Elev 21	ARP: N53 32.0 E009 49.9	RFF: CAT 9	AD HR: PPR
------------	-------------------------	------------	------------



THR Coordinates

RWY 05 (DTHR)	N53 31.7	E009 49.3
RWY 23 (DTHR)	N53 32.3	E009 50.6

Intersection TORA

RWY 05	
PAD North	2540m / 8333ft
G	1710m / 5610ft
D South	1700m / 5577ft
RWY 23	
E	2715m / 8907ft
B	1815m / 5954ft
D North	1470m / 4822ft

RWY	Slope	TORA m/ft	LDA m/ft	ALS	REDL	RCLL	Additional
05	0	3183 / 10442 ②	2526 / 8287	H-E	H ①	15m	P 3°
23	0	2935 / 9629 ③	2518 / 8261	H-E	H ①	15m	P 3°

① White. ② 2973 / 9753 for ACFT type F. ③ 2725 / 8940 for ACFT type F.

STATE		TAKE OFF MINIMA	
RWY	Facilities	VIS A B C D	
23	RCL (day only) or RCL + REDL	400m	
	Nil (day only)	500m	
05	Nil (day only) or RCL (day only) or RCL + REDL	800m	

© Navitech - edhi01laorg0

Change: Minima

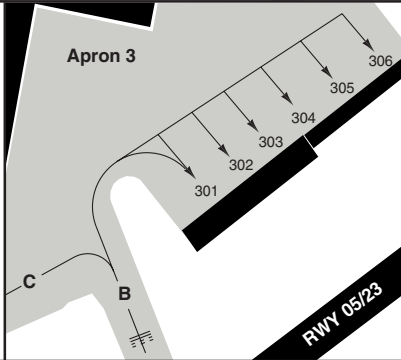
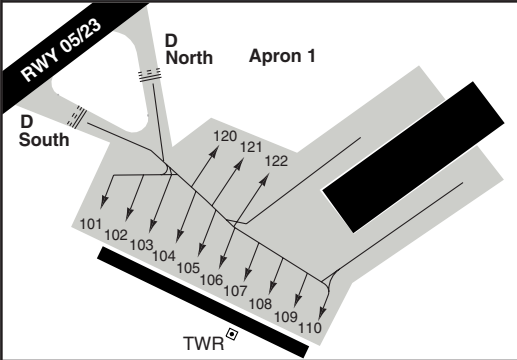
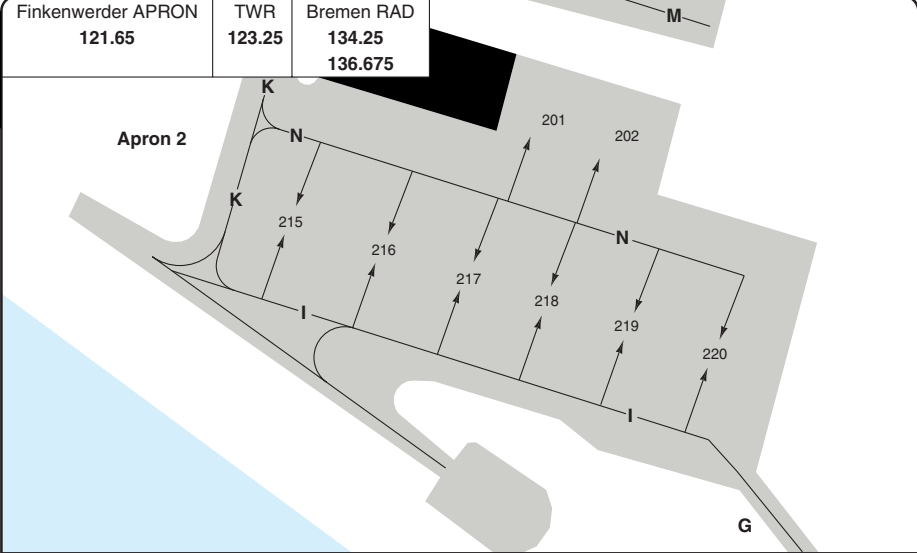
THIS CHART IS A PART OF NAVIGRAPH NDAC AND IS INTENDED FOR FLIGHT SIMULATION USE ONLY

AERODROME Parking

Finkenwerder HAMBURG

10 - 2

Finkenwerder APRON 121.65	TWR 123.25	Bremen RAD 134.25 136.675
------------------------------	---------------	---------------------------------



© Navitech - edhi02laorg0

Change: GENERAL

THIS CHART IS A PART OF NAVIGRAPH NDAC AND IS INTENDED FOR FLIGHT SIMULATION USE ONLY

GENERAL

Finkenwerder **HAMBURG**

GENERAL

1. **WARNING**

Danger from aquaplaning on the asphalt part of the RWY.

2. **SPEED**

MAX 250kt below FL100.

3. **TWY RESTRICIONS**

TWY B, C, D and O MAX wingspan 52m/170ft.

TWY E MAX wingspan 24m/78ft.

ARRIVAL

1. **NOISE ABATEMENT PROCEDURE**

- 1.1 Arrange flight to leave IAF at a speed which permits OPS in clean configuration. Maintain speed until 12nm from TDP. 210kt +/- 10kt. recommended.
- 1.2 Recommended 160kt +/- 10kt to OM with intermediate flap setting.
- 1.3 Landing configuration should be established shortly prior to or over the OM.

DEPARTURE

1. **NOISE ABATEMENT PROCEDURES**

- 1.1 Noise certified ACFT in accordance with ICAO Annex 16, Chapter 2:
 - a) TKOF to 1500ft GND
 - take-off power
 - take-off flaps
 - climb at V2+10kt
 - b) At 1500ft GND
 - reduce power to not less than climb power
 - c) From 1500ft GND to 3000ft GND
 - climb at V2+10kt
 - d) At 3000ft GND
 - acceleration during climb and retraction of flaps.
 - normal transition to enroute climb
- 1.2 Noise certified ACFT in accordance with ICAO Annex 16, Chapter 3:
 - a) TKOF to 1500ft GND
 - take-off power
 - take-off flaps
 - climb at V2+10kt
 - b) At 1500ft GND
 - reduce power to not less than climb power
 - acceleration during climb and retraction of flaps.
 - normal transition to enroute climb

10 - 3

Radar Procedures

Finkenwerder **HAMBURG**

Bremen RAD 134.25 136.675	Hamburg DIR 118.2	Finkenwerder TWR 123.25	APRON 121.65
---	-----------------------------	-----------------------------------	------------------------

SRA RWY 05

ACFT	SRA a	FAT 050°	DTHR Elev 15	AD Elev 21	TL ATC	TA 5000
------	--------------	-----------------	---------------------	-------------------	---------------	----------------

STATE	A	a Note: Circling NA Climb on 050° to 4000 .
	B	
	C	
	D	

SRA RWY 23

ACFT	SRA a	FAT 230°	DTHR Elev 15
------	--------------	-----------------	---------------------

STATE	A	a Note: Circling NA Climb on 230° to 4000 .
	B	
	C	
	D	

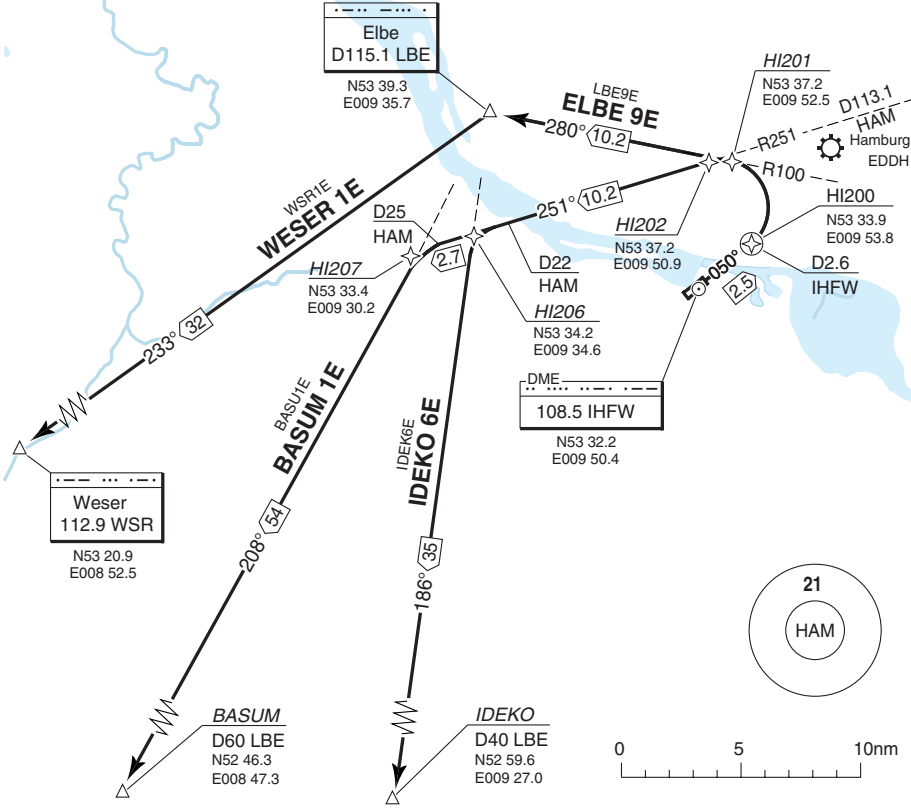
SID RWY 05 **RNAV** Overlay GPS/FMS 1

Finkenwerder **HAMBURG**

Finkenwerder TWR 123.25	Bremen RAD 134.25 136.675	ATIS 123.125
----------------------------	---------------------------------	-----------------

TA 5000 AD Elev 21

1 South, West



COM: Contact Bremen Radar 134.25 immediately after TKOF.

SPEED: MAX 250kt below FL100

MNM CLIMB GRADIENT: 5.1% to 300.

ALT RESTRICTION: Climb to **5000**.

SID	Routeing
BASUM 1E	Climb on 050° to D2.6 IHFW - turn left - R251 HAM - at D25 HAM turn left - R208 LBE - BASUM RNAV: Climb on 050° - HI200 - HI202 - HI207 - BASUM
ELBE 9E	Climb on 050° to D2.6 IHFW - turn left - R100 LBE - LBE. RNAV: Climb on 050° - HI200 - HI201 - LBE
IDEKO 6E	Climb on 050° to D2.6 IHFW - turn left - R251 HAM - at D22 HAM turn left - R186 LBE - IDEKO RNAV: Climb on 050° - HI200 - HI202 - HI206 - IDEKO
WESER 1E	Climb on 050° to D2.6 IHFW - turn left - R100 LBE - LBE - R233 LBE - WSR. RNAV: Climb on 050° - HI200 - HI201 - LBE - WSR

© Navitech - edhi01daorg0

Change: Speed restr, SID

THIS CHART IS A PART OF NAVIGRAPH NDAC AND IS INTENDED FOR FLIGHT SIMULATION USE ONLY

WEF 08 APR 10

30 - 2 19 MAR 10

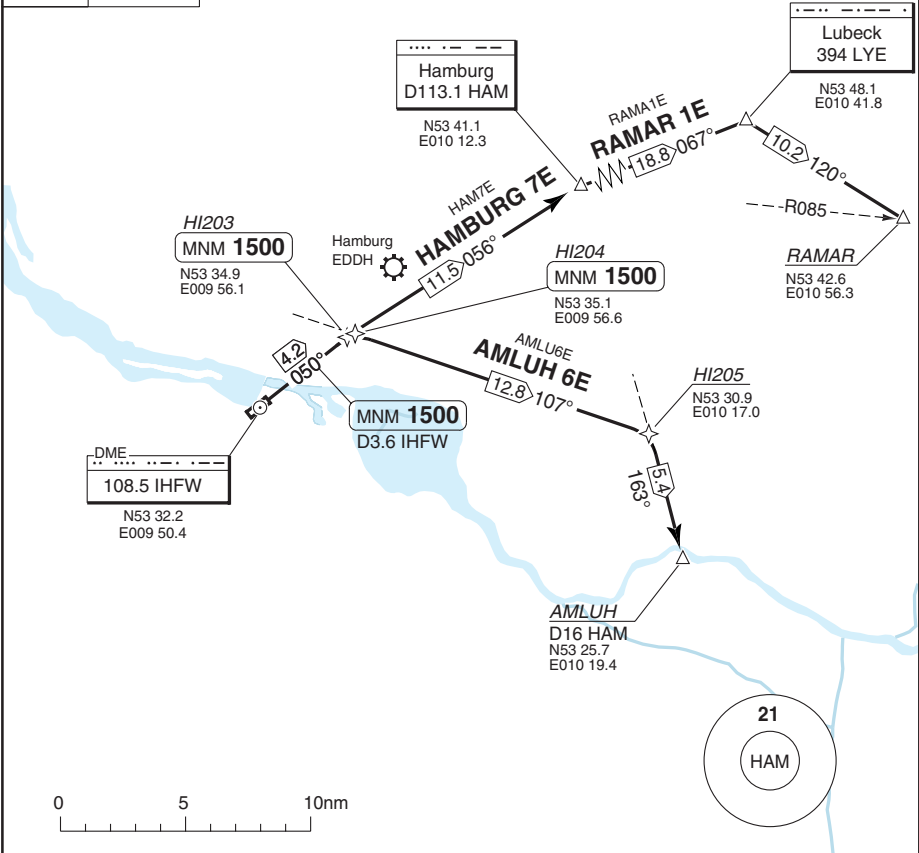
Germany - EDHI / XFW

SID RWY 05 **RNAV** Overlay GPS/FMS East

Finkenwerder **HAMBURG**

Finkenwerder TWR 123.25	Bremen RAD 134.25 136.675	ATIS 123.125
----------------------------	---------------------------------	-----------------

TA 5000 AD Elev 21



COM: Contact Bremen Radar 136.675 immediately after TKOF.

SPEED: MAX 250 kt below FL100

MNM CLIMB GRADIENT: 5.1% to 300.

ALT RESTRICTION: Climb to **5000**.

SID	Routing	Altitudes
AMLUH 6E	Climb on 050° - at D3.6 IHFWS or 1500, whichever is later - turn right - R107 LBE - at D24.5 LBE, turn right - R163 HAM - AMLUH RNAV: Climb on 050° - HI204 - HI205 - AMLUH	D3.6 IHFWS MNM 1500 HI204 MNM 1500
HAMBURG 7E	Climb on 050° - at D3.6 IHFWS or 1500, whichever is later - turn right - R236 HAM - HAM RNAV: Climb on 050° - HI203 - HAM	D3.6 IHFWS MNM 1500 HI204 MNM 1500
RAMAR 1E	Climb on 050° - at D3.6 IHFWS or 1500, whichever is later - turn right - R236 HAM - HAM - R067 HAM - LYE - 120° from LYE - RAMAR RNAV: Climb on 150° - HI203 - HAM - LYE - RAMAR	D3.6 IHFWS MNM 1500 HI203 MNM 1500

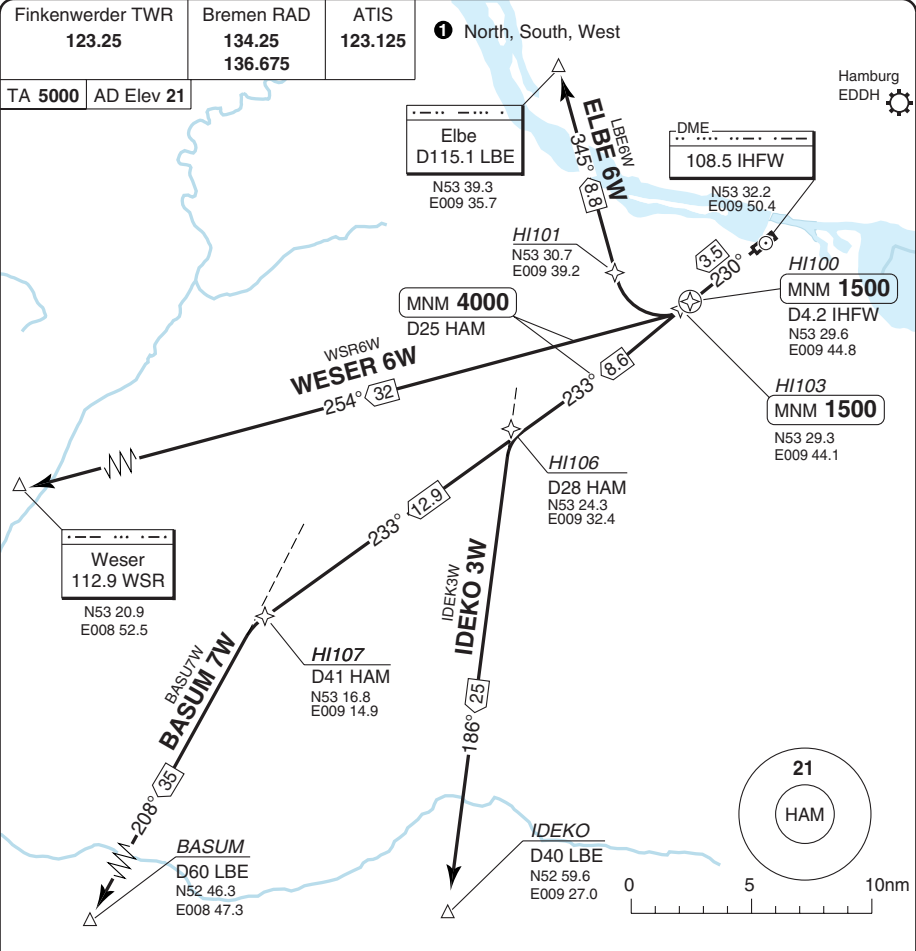
© Navitech - edhi02daorg0

Change: Speed restr, SID

THIS CHART IS A PART OF NAVIGRAPH NDAC AND IS INTENDED FOR FLIGHT SIMULATION USE ONLY

SID RWY 23 **RNAV** Overlay GPS/FMS 1

Finkenwerder **HAMBURG**



COM: Contact Bremen Radar 134.25 immediately after TKOF.

SPEED: MAX 250kt below FL100

MNM CLIMB GRADIENT: 5.1% to 300.

ALT RESTRICTION: Climb to **5000**.

SID	Routeing	Altitudes
(INITIAL CLIMB)	Climb on 230° - at D4.2 IHFW or 1500, whichever is later - turn right - follow SID.	D4.2 IHFW MNM 1500
BASUM 7W	R233 HAM - at D41 HAM, turn left - R208 LBE - BASUM RNAV: Climb on 230° - HI103 - HI107 - BASUM	HI103 MNM 1500
ELBE 6W	R165 LBE - LBE RNAV: Climb on 230° - HI100 - HI101 - LBE	HI100 MNM 1500
IDEKO 3W	R233 HAM - at D28 HAM, turn left - R086 LBE - IDEKO RNAV: Climb on 230° - HI103 - HI106 - IDEKO	HI103 MNM 1500
WESER 6W	R074 WSR - WSR RNAV: Climb on 230° - HI103 - WSR	HI103 MNM 1500

Change: SID, Speed restr

WEF 08 APR 10

30 - 4 19 MAR 10

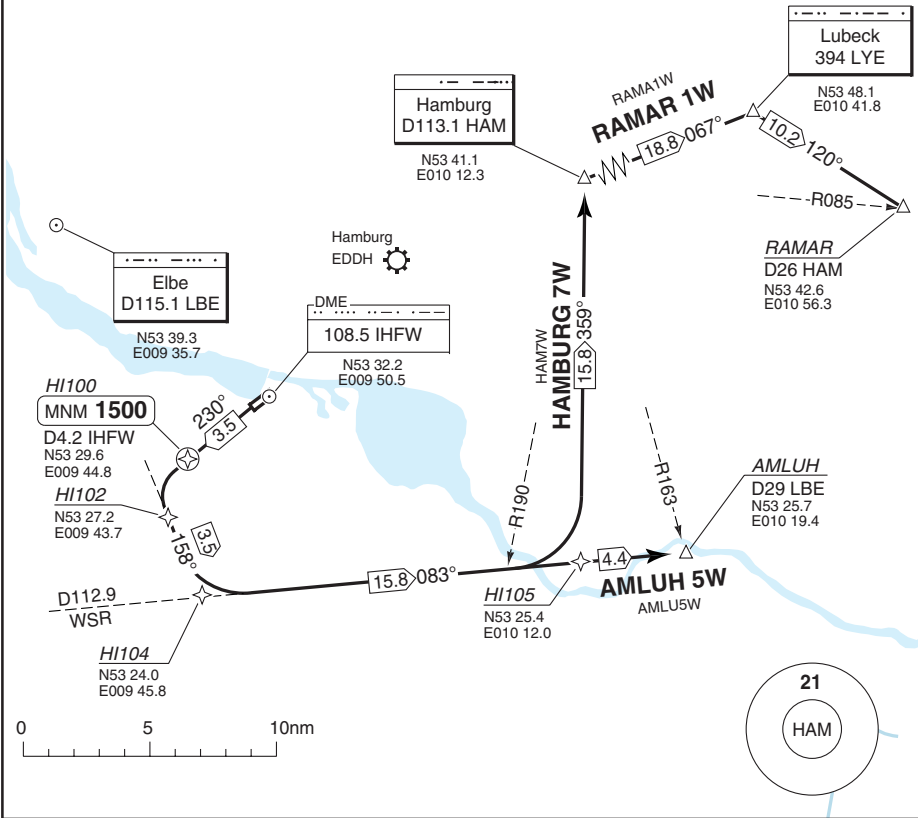
Germany - EDHI / XFW

SID RWY 23 **RNAV** Overlay GPS/FMS East

Finkenwerder **HAMBURG**

Finkenwerder TWR 123.25	Bremen RAD 134.25 136.675	ATIS 123.125
-----------------------------------	---	------------------------

TA **5000** AD Elev **21**



COM: Contact Bremen Radar 136.675 immediately after TKOF.
SPEED: MAX 250kt below FL100
MNM CLIMB GRADIENT: 5.1% to 300.
ALT RESTRICTION: Climb to **5000**.

SID	Routeing	Altitudes
(INITIAL CLIMB)	Climb on 230° - at D4.2 IHFW or 1500, whichever is later - turn left - R158 LBE - at D15 LBE turn left - R083 WSR - follow SID RNAV: Climb on 230° - HI100 - HI102 - HI104 - follow SID.	D4.2 IHFW MNM 1500 HI100 MNM 1500
AMLUH 5W	AMLUH	
HAMBURG 7W	At R190 HAM turn left - R179 HAM - HAM RNAV: HI105 - HAM	
RAMAR 1W	At R190 HAM, turn left - R179 HAM - HAM - turn right - R067 HAM - LYE - 120° from LYE - RAMAR RNAV: HI105 - HAM - LYE - RAMAR	

© Navitech - edhi04daorg0

Change: Speed restr. SID

THIS CHART IS A PART OF NAVIGRAPH NDAC AND IS INTENDED FOR FLIGHT SIMULATION USE ONLY

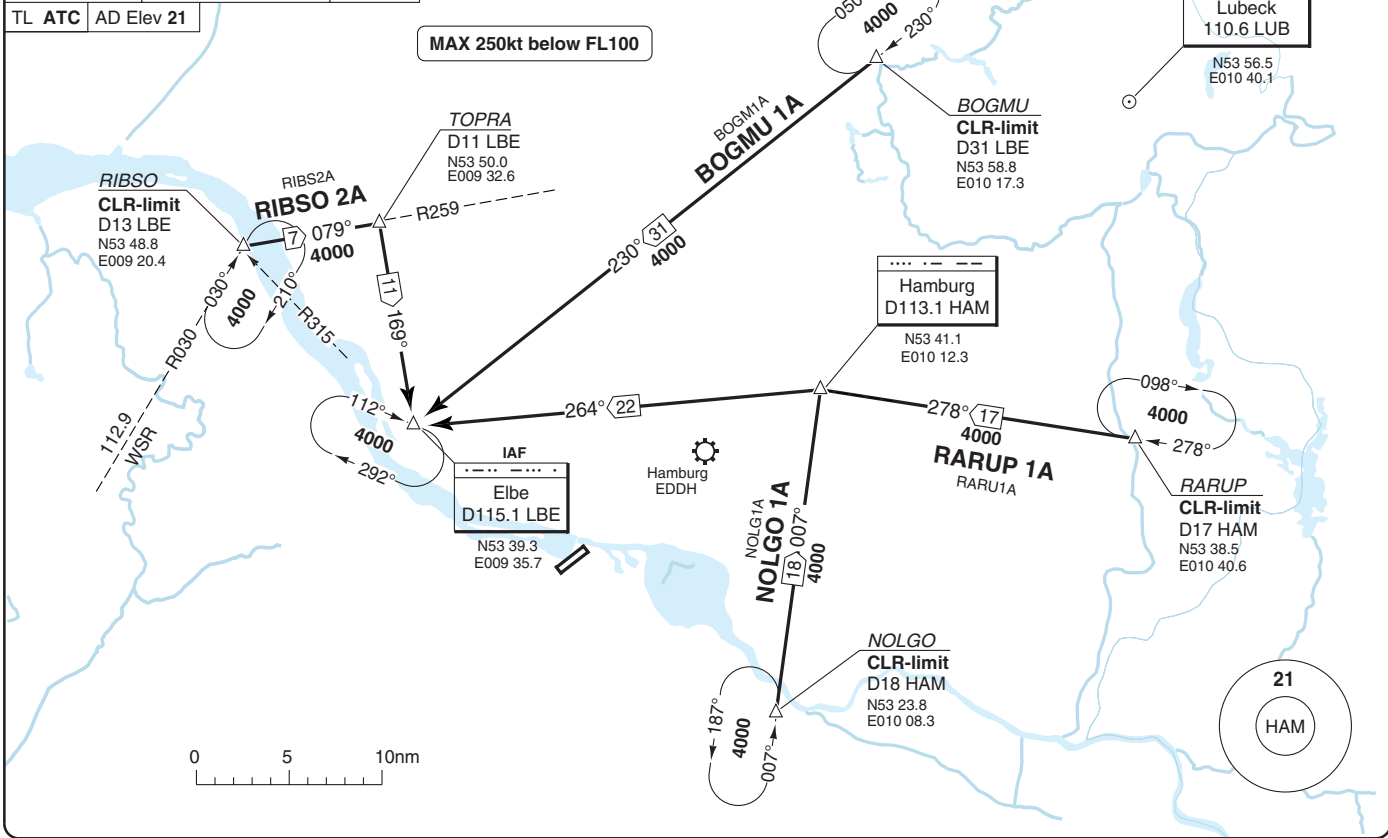
THIS CHART IS A PART OF NAVIGRAPH NDAC AND IS INTENDED FOR FLIGHT SIMULATION USE ONLY

Change: Speed rest

Bremen RAD 134.25 136.675	Finkenwerder TWR 123.25	ATIS 123.125
---------------------------------	----------------------------	-----------------

TL ATC AD Elev 21

MAX 250kt below FL100



Reverse side blank

STAR RWY 05/23

W/E 08 APR 10

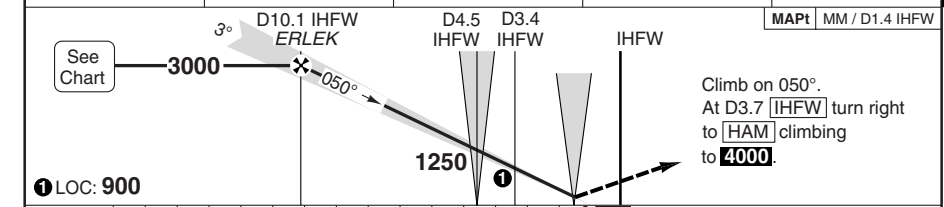
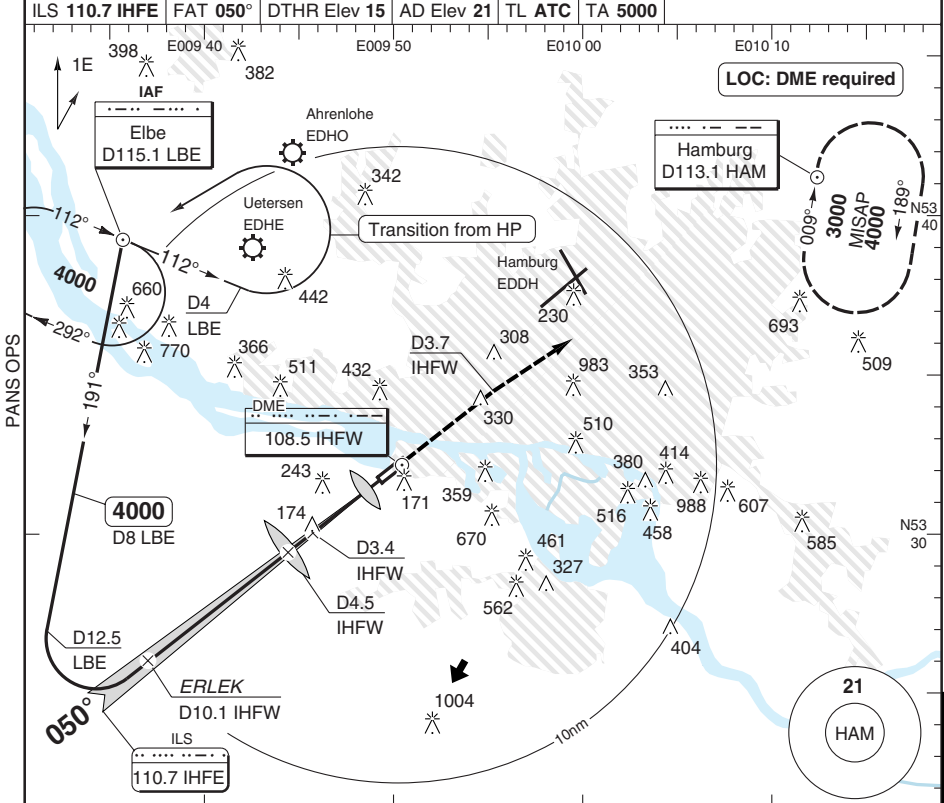
40 - 1 | 19 MAR 10

Finkenwerder **HAMBURG**
Germany - EDHI / XFW

ILS RWY 05

Finkenwerder **HAMBURG**

Bremen RAD 134.25 136.675	Hamburg DIR 118.2	Finkenwerder TWR 123.25	APRON 121.65
ILS 110.7 IHFE FAT 050° DTHR Elev 15 AD Elev 21 TL ATC TA 5000			



nm	15	14	13	12	11	10	9	8	7	6	5	4	3	2	1	0	TCH 56
----	----	----	----	----	----	----	---	---	---	---	---	---	---	---	---	---	--------

ACFT	ILS	LOC+DME	Circling ^a
A	220 (200) 1.0km	420 (410) 1200m	590 (569) 2.0km
B	220 (205) 1.0km		730 (709) 2.0km
C	230 (215) 1.0km		910 (889) 2.4km
D	240 (225) 1.0km		910 (889) 3.6km

^a Northwest of AD only.

DME IHFW	3.0° ALT	LDA 2526x45 8287x147ft P 3°
9.9	3000	
8	2380	
7	2060	
6	1740	
5	1420	
4	1100	
3	780	
1.9	420	

GS	80	100	120	140	160
ROD 3.0°	430	540	650	760	860

Change: MSA, Minima

© Navtech - edhi01iaip00

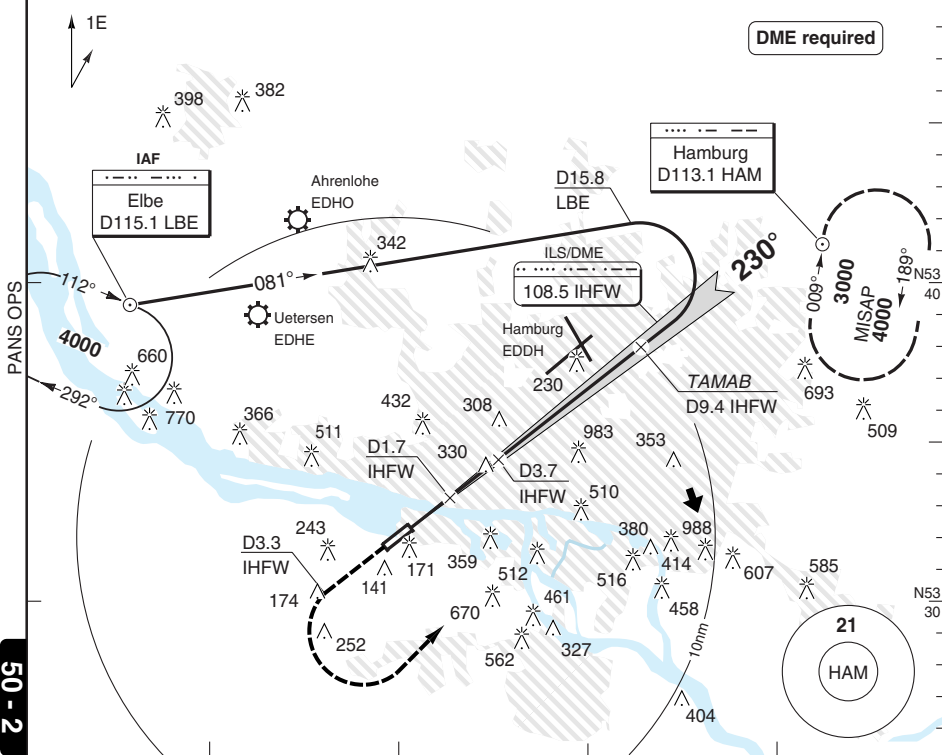
50 - 1

ILS RWY 23

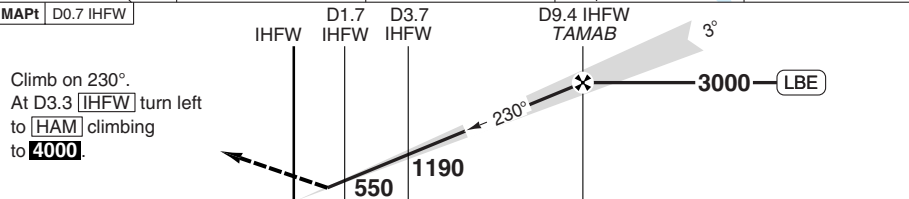
Finkenwerder HAMBURG

Bremen RAD 134.25 136.675	Hamburg DIR 118.2	Finkenwerder TWR 123.25	APRON 121.65
---------------------------------	----------------------	----------------------------	-----------------

ILS/DME 108.5 IHFW	FAT 230°	DTHR Elev 15	AD Elev 21	TL ATC	TA 5000
--------------------	----------	--------------	------------	--------	---------



50 - 2



TCH 52

	0	1	2	3	4	5	6	7	8	9	10	11	12	13	14	15	16	17	18	nm
--	---	---	---	---	---	---	---	---	---	---	----	----	----	----	----	----	----	----	----	----

ACFT	ILS+DME	LOC+DME	Circling ^a	DME IHFW	3.0° ALT	LDA 2518x45		
A	260 (236) 1.0km	450 (440) 1300m	590 (569) 1.5km	9.4	3000	8261x147ft P 3° FALS		
B	270 (246) 1.0km		730 (709) 1.6km	7	2270			
C	280 (256) 1.0km		910 (889) 2.4km	6	1940			
D	290 (266) 1.0km		910 (889) 3.6km	5	1620			
GS	80	100	120	140	160		4	1300
ROD 3.0°	440	540	650	760	870		3	970
							2	650
						1.4	450	

© Navtech - edhi02iaip00

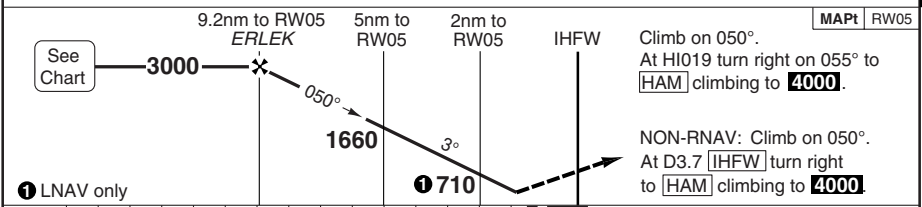
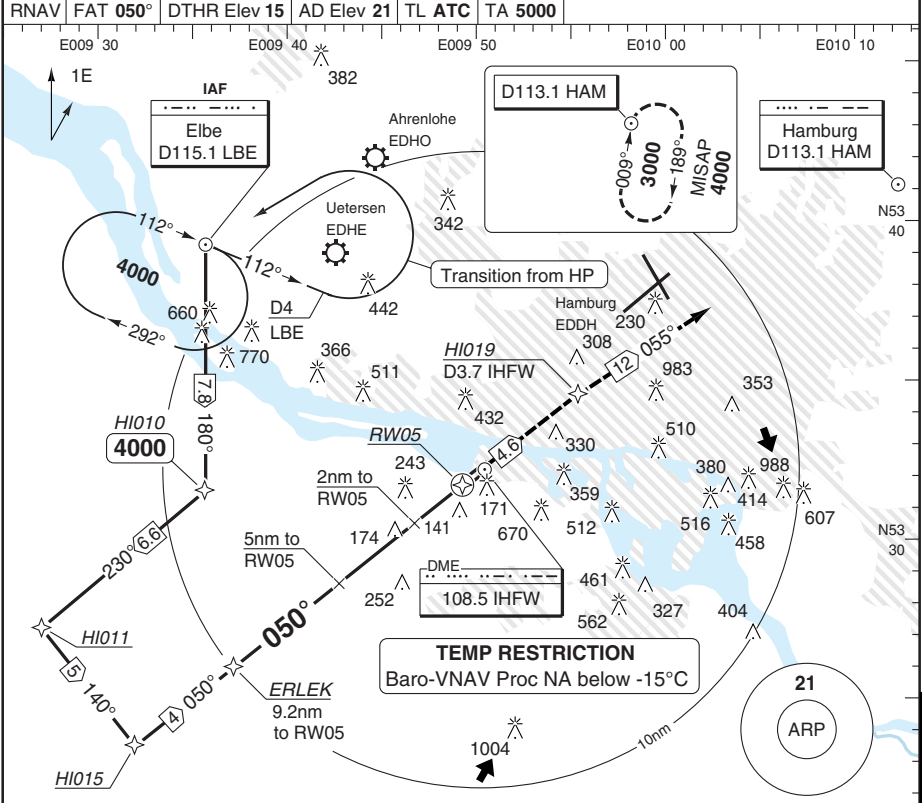
Change: MSA, Minima

THIS CHART IS A PART OF NAVIGRAPH NDAC AND IS INTENDED FOR FLIGHT SIMULATION USE ONLY

RNAV (GPS) RWY 05

Finkenwerder HAMBURG

Bremen RAD 134.25 136.675	Hamburg DIR 118.2	Finkenwerder TWR 123.25	APRON 121.65
RNAV	FAT 050°	DTHR Elev 15	AD Elev 21
TL ATC	TA 5000		



nm	15	14	13	12	11	10	9	8	7	6	5	4	3	2	1	0	TCH 50
ACFT	LNAV/VNAV		LNAV		Circling ^a												
A	340 (320) 700m				590 (569) 2.0km												
B			490 (460) 1400m		730 (709) 2.0km												
C	390 (380) 1000m				910 (889) 2.4km												
D					910 (889) 3.6km												
GS	80	100	120	140	160												
ROD 3.0°	440	540	650	760	870												
THR	05	3.0°															
	ALT																
	9.2	3000															
	7	2330															
	6	2010															
	5	1680															
	4	1360															
	3	1040															
	2	710															
	1.3	490															
		LDA 2526x45 8287x147ft															
		P 3°															
		FALS															

© Navtech - edhi03iaip00

Change: MSA, Minima

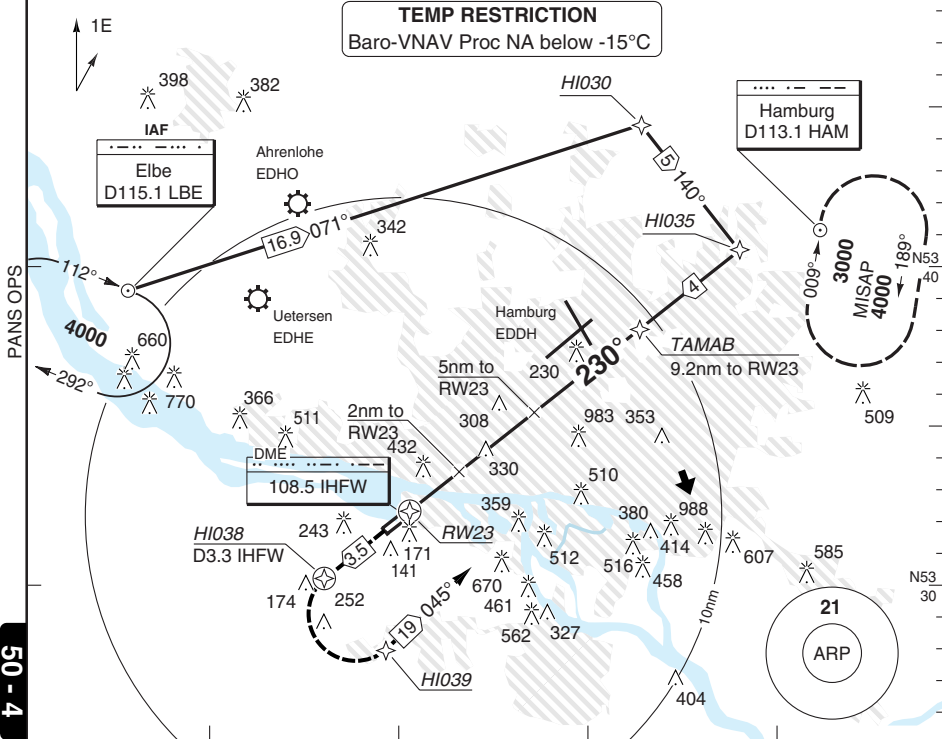
THIS CHART IS A PART OF NAVIGRAPH NDAC AND IS INTENDED FOR FLIGHT SIMULATION USE ONLY

RNAV (GPS) RWY 23

Finkenwerder HAMBURG

Bremen RAD 134.25 136.675	Hamburg DIR 118.2	Finkenwerder TWR 123.25	APRON 121.65
---------------------------------	----------------------	----------------------------	-----------------

RNAV	FAT 230°	DTHR Elev 15	AD Elev 21	TL ATC	TA 5000
------	----------	--------------	------------	--------	---------



MAPt RW23

Climb on 230° to HI038.
Turn left via HI039 on 045° to **HAM** climbing to **4000**.

NON-RNAV: Climb on 230°.
At D3.3 **IHFW** turn left to **HAM** climbing to **4000**.

IHFW 2nm to RW23 5nm to RW23 9.2nm to RW23 TAMAB

3000 See Chart

710 1660

① LNAV only

TCH 50

	0	1	2	3	4	5	6	7	8	9	10	11	12	13	14	15	nm
--	---	---	---	---	---	---	---	---	---	---	----	----	----	----	----	----	----

ACFT	LNAV/VNAV	LNAV	Circling ^a	THR	3.0° ALT	LDA 2518x45 8261x147ft P 3°
A			590 (569) 1.5km	23	3000	
B	450 (440) 1300m	450 (440) 1300m	730 (709) 1.6km	7	2330	
C			910 (889) 2.4km	6	2010	
D			910 (889) 3.6km	5	1680	
				4	1360	
				3	1040	
				2	710	
GS	80	100	120	140	160	
ROD 3.0°	440	540	650	760	870	
				1.2	450	

^a Northwest of AD only.

© Navtech - edhi04iaip00

EU OPS

FALS

Change: MSA, Minima

JAR-OPS Landing Minima

Finkenwerder **HAMBURG**

The following Minima is for Public Transport aircraft and conforms to JAR-OPS1 regulations.

STRAIGHT-IN APPROACH		C				D			
R/W	Procedure	DA/ MDA QNH ft	DH/ MDH QFE ft	RVR m	RVR No ALS m	DA/ MDA QNH ft	DH/ MDH QFE ft	RVR m	RVR No ALS m
05	ILS (2)(3)	230	220	1000	1000	240	230	1000	1000
05	LLZ/DME	430	410	1000	1800	430	410	1400	2000
05	SRA	500	480	1200	2000	500	480	1600	2000
05	RNAV (L/VNAV)	400	380	1000	1800	400	380	1400	2000
05	RNAV (LNAV)(1)	490	460	1200	2000	490	460	1600	2000
23	ILS/DME (2)(3)	280	260	1000	1200	290	270	1000	1200
23	LLZ/DME (3)	460	440	1000	1800	460	440	1400	2000
23	SRA	590	570	1200	2000	590	570	1600	2000
23	RNAV (L/VNAV) (3)	460	440	1000	1800	460	440	1400	2000
23	RNAV (LNAV) (3)	460	440	1000	1800	460	440	1400	2000

Notes:

- (1) Procedure based on aerodrome elevation.
- (2) Includes Cat DL aeroplanes.
- (3) Values shown are GND VIS.

CIRCLING		C			D		
R/W	Procedure	MDA QNH ft	MDH QFE ft	Vis m	MDA QNH ft	MDH QFE ft	Vis m
05	All Procs (1)	870	850	2400	1380	1360	3600
23	All Procs (1)	870	850	2400	1380	1360	3600

Notes:

- (1) SRA procedure N/A.

TAKE-OFF		C		D	
Runway	Facilities	RVR	Vis	RVR	Vis
05	REDL and/or RCL	800	-	800	-
23	REDL and/or RCL	400	-	400	-
23	Nil (Day only)	500	-	500	-

Notes:

JAR-OPS Landing Minima

Finkenwerder **HAMBURG**

The following Minima is for Public Transport aircraft and conforms to JAR-OPS1 regulations.

STRAIGHT-IN APPROACH		A				B			
R/W	Procedure	DA/ MDA QNH ft	DH/ MDH QFE ft	RVR m	RVR No ALS m	DA/ MDA QNH ft	DH/ MDH QFE ft	RVR m	RVR No ALS m
05	ILS (2)(3)	220	200	1000	1000	220	210	1000	1000
05	LLZ/DME	430	410	900	1500	430	410	1000	1500
05	SRA	500	480	1000	1500	500	480	1200	1500
05	RNAV (L/VNAV)	400	380	900	1500	400	380	1000	1500
05	RNAV (LNAV)(1)	490	460	1000	1500	490	460	1200	1500
23	ILS/DME (2)(3)	260	240	1000	1000	270	250	1000	1000
23	LLZ/DME (3)	460	440	1000	1500	460	440	1000	1500
23	SRA	590	570	1000	1500	590	570	1200	1500
23	RNAV (L/VNAV) (3)	460	440	1000	1500	460	440	1000	1500
23	RNAV (LNAV) (3)	460	440	1000	1500	460	440	1000	1500

Notes:

- (1) Procedure based on aerodrome elevation.
- (2) Includes Cat DL aeroplanes.
- (3) Values shown are GND VIS.

CIRCLING		A			B		
R/W	Procedure	MDA QNH ft	MDH QFE ft	Vis m	MDA QNH ft	MDH QFE ft	Vis m
05	All Procs (1)	540	520	2000	660	640	2000
23	All Procs (1)	540	520	1500	660	640	1600

Notes:

- (1) SRA procedure N/A.

TAKE-OFF		A		B	
Runway	Facilities	RVR	Vis	RVR	Vis
05	REDL and/or RCL	800	-	800	-
23	REDL and/or RCL	400	-	400	-
23	Nil (Day only)	500	-	500	-

Notes: