

## Airport information:

Country: Nigeria

City: SOKOTO

Coordinates: N 12° 55.0', E005 12.4

Elevation: 1010

Customs: Hajj: H24, O/R

Fuel: Jet A1

RFF: CAT7

hours: 06-18

## Runways:

Runway 08

Takeoff length: 3000, Landing length: 3000

Runway 26

Takeoff length: 3000, Landing length: 3000

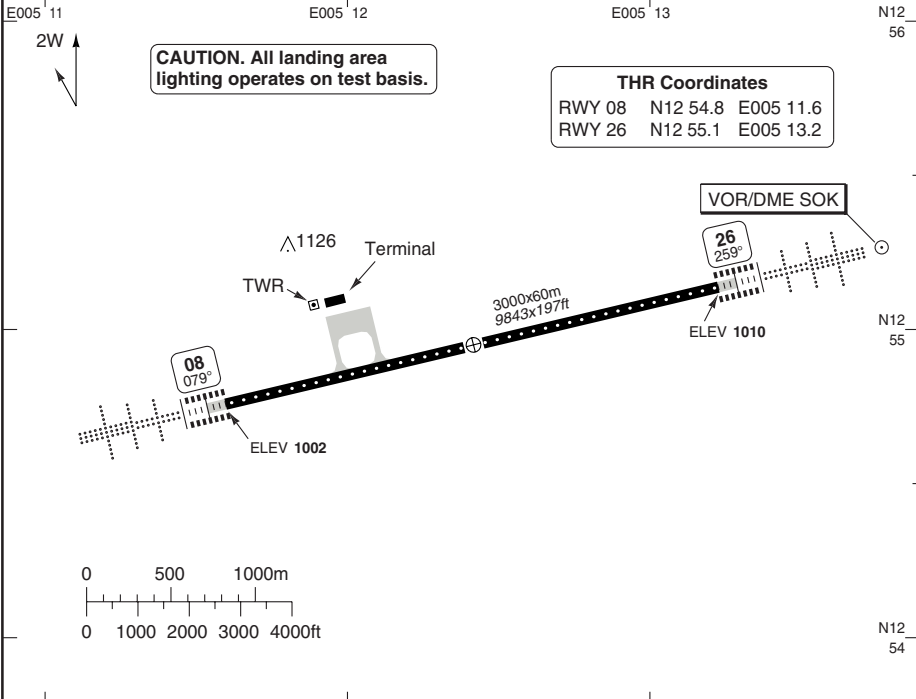
# AERODROME

## Saddiq Abubakar III INTL SOKOTO

10 - 1

Sokoto TWR  
 122.1  
 124.5

AD Elev **1010** | ARP: N12 55.0 E005 12.4 | RFF: CAT 7 | AD HR: 06 - 18



RWY	Slope	TORA m/ft	LDA m/ft	ALS	REDL	RCL	Additional
08	0	3000 / 9843	3000 / 9843	H-A	H	30m	V 3°
26	0	3000 / 9843	3000 / 9843	H-A	H	-	V 3°

**STATE TAKE OFF MINIMA**

RWY	Facilities	RVR			
		A	B	C	D
08/26 <b>a</b>	-	-	-	-	-

**a** TAKE-OFF minima must be equal to or greater than LANDING minima.

**GENERAL INFORMATION**

- WARNING**  
 Caution due to birds and animals, on and in the vicinity of airfield.

© Navtech - dns01laorg0

Reverse side blank

Change: New spec.

# Additional Landing Minima

Saddiq Abubakar III INTL **SOKOTO**

## VOR RWY 08 NON CDFA

ACFT	VOR 4.0%	VOR 2.5%	Circling 4.0%	Circling 2.5%
<b>EU OPS</b>	A	<b>1790</b> (788)	<b>2070</b> (1080)	<b>1800</b> (790)
	B	3.1km	4.3km	3.1km
	C	<b>1790</b> (788)	<b>2070</b> (1080)	<b>1800</b> (790)
	D	3.3km	4.5km	3.3km
			<b>1800</b> (790)	<b>2090</b> (1080)
			3.6km <b>a</b>	4.5km <b>a</b>

**a** No circling to the East of AD

51 - 1

Change: New spec.

**THIS CHART IS A PART OF NAVIGRAPH NDAC AND IS INTENDED FOR FLIGHT SIMULATION USE ONLY**

# JAR-OPS Landing Minima Saddiq Abubakar III INTL **SOKOTO**

The following Minima is for Public Transport aircraft and conforms to JAR-OPS1 regulations.

STRAIGHT-IN APPROACH		C				D			
R/W	Procedure	DA/ MDA QNH ft	DH/ MDH QFE ft	VIS m	VIS No ALS m	DA/ MDA QNH ft	DH/ MDH QFE ft	VIS m	VIS No ALS m
08	ILS (1)	<b>1230</b>	220	800	1200	<b>1240</b>	230	800	1200
08	LOC	<b>1260</b>	250	1200	2000	<b>1260</b>	250	1200	2000
08	VOR/DME	<b>1390</b>	380	1600	2200	<b>1390</b>	380	2000	2400
08	VOR (M/App 2.5%)	<b>2080</b>	1080	1600	2200	<b>2080</b>	1080	2000	2400
08	VOR (M/App 4.0%)	<b>1800</b>	790	1600	2200	<b>1800</b>	790	2000	2400

Notes:

(1) Cat A RVR = 550m, Cat B, C, D RVR = 600m.

CIRCLING		C			D		
R/W	Procedure	MDA QNH ft	MDH QFE ft	Vis m	MDA QNH ft	MDH QFE ft	Vis m
08	ILS, LOC, VOR/DME (1)	<b>1610</b>	600	2400	<b>2830</b>	1820	4400
08	VOR (2)	<b>1800</b>	790	2400	<b>1800</b>	790	4400

Notes:

(1) Prohibited NE of RCL.

(2) Prohibited East of SOK (R030 - R090) for Cat D aircraft.

TAKE-OFF		C		D	
Runway	Facilities	RVR	Vis	RVR	Vis
08/26 (1)	-	-	-	-	-

Notes:

(1) Take-off Minima must be equal to or greater than the Landing Minima.

# JAR-OPS Landing Minima Saddiq Abubakar III INTL **SOKOTO**

The following Minima is for Public Transport aircraft and conforms to JAR-OPS1 regulations.

STRAIGHT-IN APPROACH		A				B			
R/W	Procedure	DA/ MDA QNH ft	DH/ MDH QFE ft	VIS  m	VIS No ALS m	DA/ MDA QNH ft	DH/ MDH QFE ft	VIS  m	VIS No ALS m
08	ILS (1)	<b>1210</b>	200	800	1200	<b>1220</b>	210	800	1200
08	LOC	<b>1260</b>	250	1200	1600	<b>1260</b>	250	1200	2000
08	VOR/DME	<b>1390</b>	380	1600	2000	<b>1390</b>	380	1600	2200
08	VOR (M/App 2.5%)	<b>2080</b>	1080	1600	2000	<b>2080</b>	1080	1600	2200
08	VOR (M/App 4.0%)	<b>1800</b>	790	1600	2000	<b>1800</b>	790	1600	2200

Notes:

(1) Cat A RVR = 550m, Cat B, C, D RVR = 600m.

CIRCLING		A			B		
R/W	Procedure	MDA QNH ft	MDH QFE ft	Vis  m	MDA QNH ft	MDH QFE ft	Vis  m
08	ILS, LOC, VOR/DME (1)	<b>1430</b>	420	1600	<b>1510</b>	500	1600
08	VOR (2)	<b>1800</b>	790	1600	<b>1800</b>	790	1600

Notes:

(1) Prohibited NE of RCL.

(2) Prohibited East of SOK (R030 - R090) for Cat D aircraft.

TAKE-OFF		A		B	
Runway	Facilities	RVR	Vis	RVR	Vis
08/26 (1)	-	-	-	-	-

Notes:

(1) Take-off Minima must be equal to or greater than the Landing Minima.