

Airport information:

Country: Nigeria

City: MINNA

Coordinates: N 09° 39.1', E006 27.8

Elevation: 834

Customs: Nil

Fuel: Nil

RFF: CAT7

hours: 06-18

Runways:

Runway 05

Takeoff length: 3400, Landing length: 3400

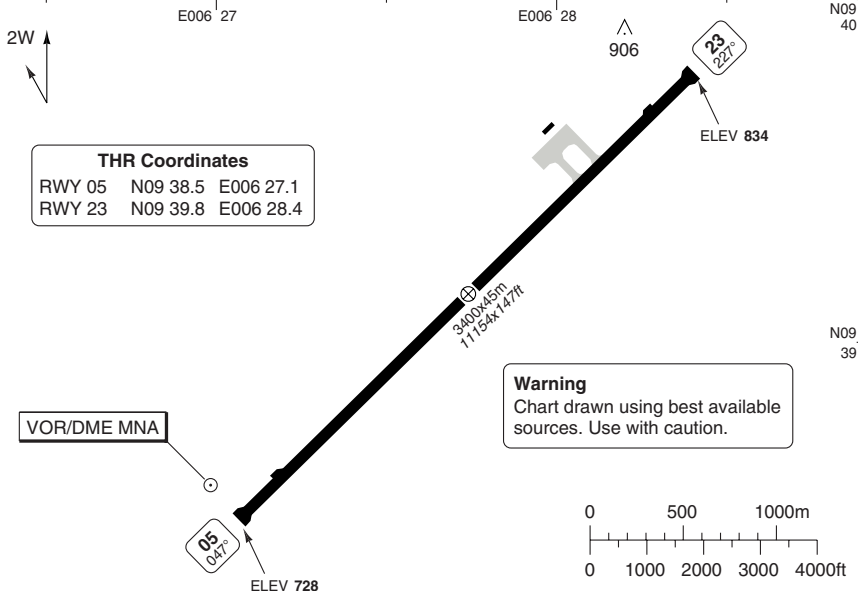
Runway 23

Takeoff length: 3400, Landing length: 3400

AERODROME

Minna TWR
118.3

AD Elev 834 ARP: N09 39.1 E006 27.8 RFF: CAT 7 AD HR: 06-18



THR Coordinates		
RWY 05	N09 38.5	E006 27.1
RWY 23	N09 39.8	E006 28.4

RWY	Slope	TORA m/ft	LDA m/ft	ALS	REDL	Additional
05	+1.0	3400 / 11154	3400 / 11154	-	-	P
23	-1.0	3400 / 11154	3400 / 11154	-	-	P

STATE TAKE OFF MINIMA

RWY	Facilities	RVR A B C D
05/23 ^a	-	-

^a Take off minima must be equal to or greater than the landing minima.

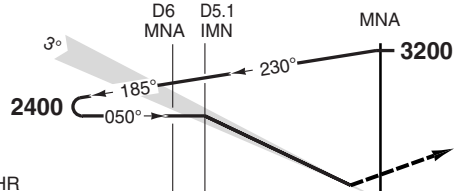
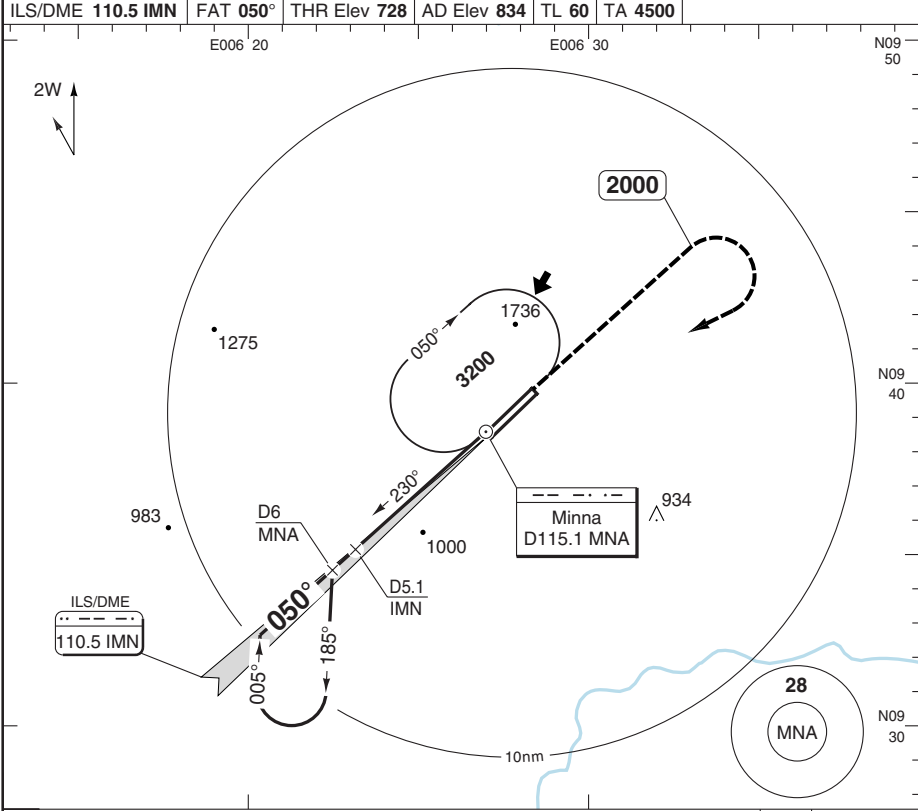
GENERAL INFORMATION

- WARNING**
Bird and dog hazard.
- RWY**
Blast pads 90m / 295ft at both ends of the runway.

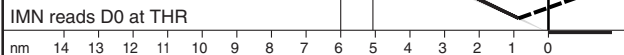
ILS RWY 05 VOR/DME

MINNA

Minna APP/TWR 118.3					
ILS/DME 110.5 IMN	FAT 050°	THR Elev 728	AD Elev 834	TL 60	TA 4500



Climb on 050° to **2000**.
Turn right to **MNA** and hold at **3200**.



ACFT	ILS	LOC+DME	Circling a	Circling b	a After ILS b After LOC+DME
A	930 (200) 1.2km	1170 (440) 2.4km	1300 (470) 1.6km	1300 (470) 2.4km	
B	940 (210) 1.2km		1340 (500) 1.6km	1340 (500) 2.4km	
C	950 (220) 1.2km	1170 (440) 2.8km	1440 (600) 2.4km	1440 (600) 2.8km	
D	960 (230) 1.2km		1540 (700) 3.6km	1540 (700) 3.6km	

DME IMN	3.0° ALT	LDA 3400x45 11154x147ft
5.1	2400	P
4	2050	
3	1740	
2	1420	
1.2	1170	

Note:
CAT B/C: No circling to the Northeast.
CAT D: No circling to the Northeast and Southeast.

Change: New spec.

© Navtech - dnmm01aip00

ILS RWY 05 NDB

MINNA

Minna APP/TWR
118.3

ILS/DME 110.5 IMN FAT 050° THR Elev 728 AD Elev 834 TL 60 TA 4500

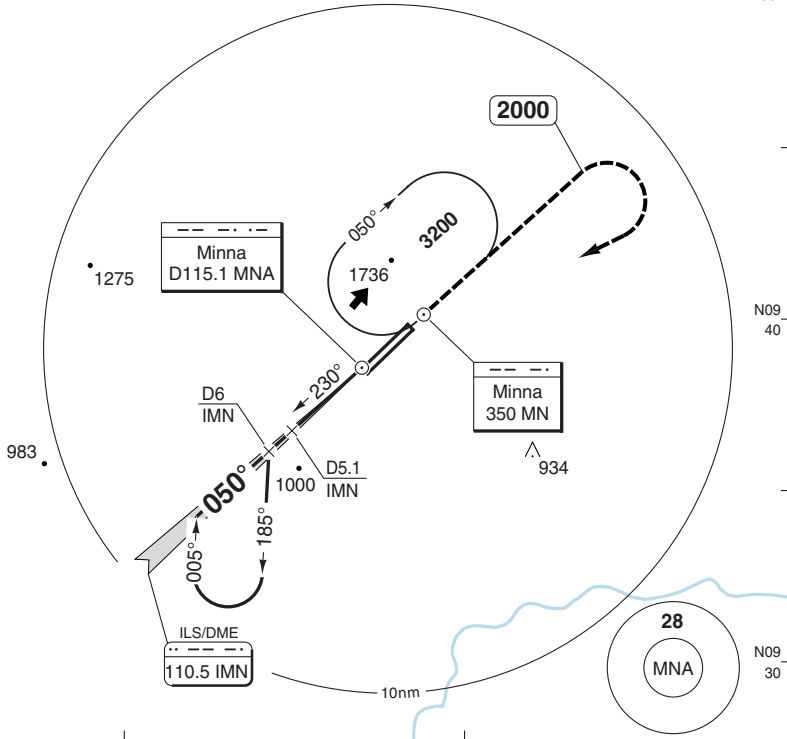
E006 20

E006 30

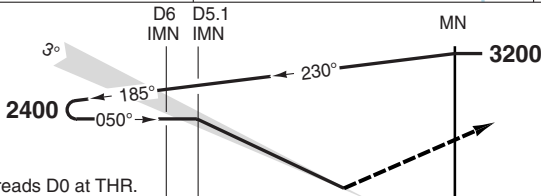
N09 50



PANS OPS



50 - 2



Climb on 050° to 2000.
Turn right to **MN** and hold at **3200**.

IMN reads D0 at THR.

nm 11 10 9 8 7 6 5 4 3 2 1 0

ACFT	ILS	LOC+DME	Circling
A	930 (200) 1.2km	1170 (440) 2.4km	1300 (470) 2.4km ^a
B			1340 (500) 2.8km
C		1170 (440) 2.8km	1440 (600) 3.7km
D		1170 (440) 3.2km	1540 (700) 4.6km

^a After ILS: VIS 1.9km

DME IMN	3.0° ALT
5.1	2400
4	2050
3	1740
2	1420
1.2	1170

LDA 3400x45
11154x147ft

P

GS	80	100	120	140	160
ROD 3.0°	430	540	640	750	850

Note:
CAT B/C: No circling to the Northeast.
CAT D: No circling to the Northeast and Southeast.

NALS

© Navtech - dnmm02iaip00

Change: New spec.

THIS CHART IS A PART OF NAVIGRAPH NDAC AND IS INTENDED FOR FLIGHT SIMULATION USE ONLY

VOR RWY 05

MINNA

Minna APP/TWR
118.3

VOR/DME MNA 115.1 FAT 050° THR Elev 728 AD Elev 834 TL 60 TA 4500

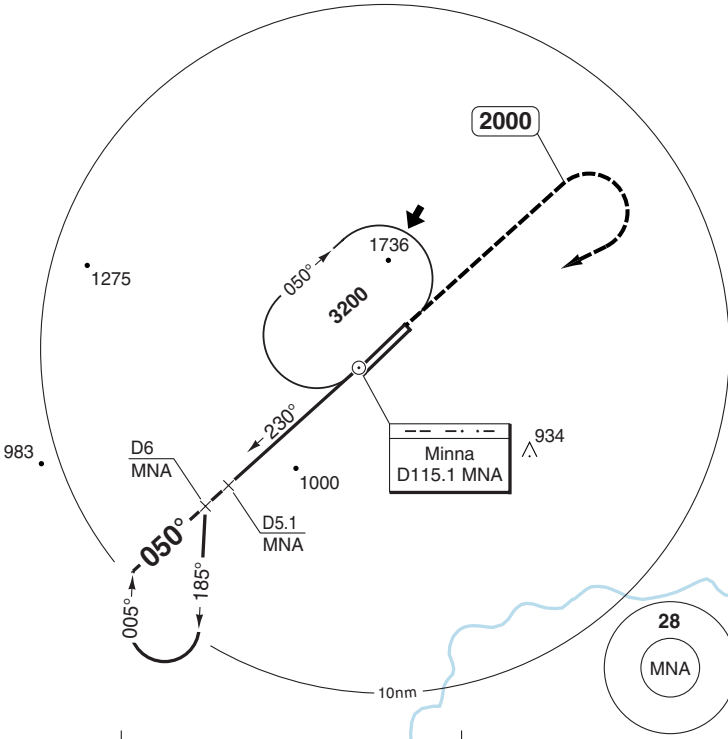
E006 20

E006 30

N09 50



PANS OPS



N09 40

N09 30

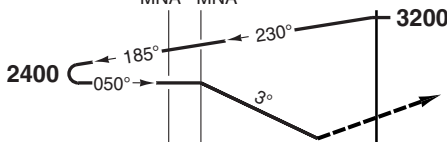
50 - 3

D6 MNA

D5.1 MNA

MNA

MAPt D0.5 MNA



Climb on 050° to 2000. Turn left to [MNA] and hold at **3200**.

MNA reads D0 at THR

nm 14 13 12 11 10 9 8 7 6 5 4 3 2 1 0

ACFT	VOR+DME	Circling
A	1250 (520) 2.4km	1300 (470) 2.4km
B	1250 (520) 2.8km	1340 (500) 2.4km
C	1250 (520) 3.6km	1440 (600) 2.8km
D	1250 (520) 3.6km	1540 (700) 3.6km

Note:
CAT B/C: No circling to the Northeast.
CAT D: No circling to the Northeast and Southeast.

DME MNA	3.0° ALT
5.1	2400
4	2050
3	1740
2	1420
1.5	1250

LDA 3400x45
11154x147ft

P

NALS

© Navtech - dnmm03iaip00

GS	80	100	120	140	160
ROD 3.0°	430	540	640	750	850

Change: New spec.

THIS CHART IS A PART OF NAVIGRAPH NDAC AND IS INTENDED FOR FLIGHT SIMULATION USE ONLY

VOR RWY 23

MINNA

Minna APP/TWR
118.3

VOR/DME MNA 115.1 | FAT 230° | THR Elev 834 | AD Elev 834 | TL 60 | TA 4500

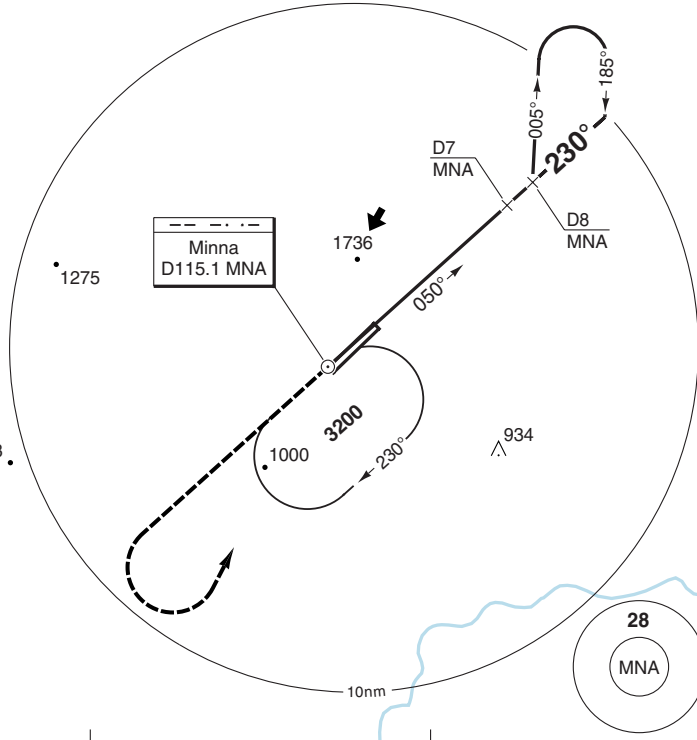
E006 20

E006 30

N09 50



PANS OPS



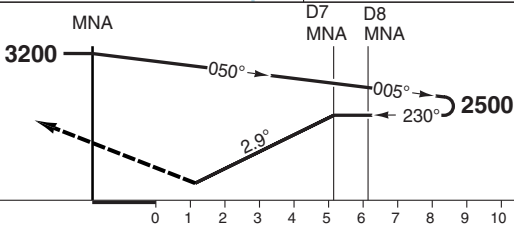
N09 40

N09 30

50 - 4

MAPt D1.8 MNA

Climb on 230° to **2000**.
Turn left to **MNA** and hold at **3200**.



MNA reads D1.6 at THR.

ACFT	VOR+DME	Circling
A	1110 (270) 2.4km	1300 (470) 2.4km
B	1110 (270) 2.8km	1340 (500) 2.4km
C	1110 (270) 3.6km	1440 (600) 2.8km
D	1110 (270) 3.6km	1540 (700) 3.6km

Note:
CAT B/C: No circling to the Northeast.
CAT D: No circling to the Northeast and Southeast.

DME MNA	3.0° ALT
7	2500
6	2190
5	1880
4	1560
3	1250
2.6	1110

LDA 3400x45
11154x147ft

P

NALS

© Navtech - dnmm04iaip00

GS	80	100	120	140	160
ROD 3.0°	420	530	630	740	840

Change: New spec.

THIS CHART IS A PART OF NAVIGRAPH NDAC AND IS INTENDED FOR FLIGHT SIMULATION USE ONLY