

Airport information:

Country: Nigeria

City: KATSINA

Coordinates: N 13° 00.0', E007 41.0

Elevation: 1660

Customs: Nil

Fuel: Nil

RFF: CAT6

hours: 06-18

Runways:

Runway 05

Takeoff length: 3045, Landing length: 3100

Runway 23

Takeoff length: 3045, Landing length: 3100

AERODROME

Katsina TWR
125.0
130.0

AD Elev 1660 | ARP: N13 00.4 E007 39.6 | RFF: CAT 6 | AD HR: 06-18

E007 39 | E007 40



WARNING
Chart drawn using best available sources.
Use with caution.

ELEV 1630

23
016°

N13 01

3045x40m
13271x131ft

TWR

Terminal

N13 00

05
016°

THR Coordinates
RWY 05 N12 59.8 E007 39.0
RWY 23 N13 01.1 E007 40.3

ELEV 1660

NDB KT



RWY	Slope	TORA m/ft	LDA m/ft	ALS	REDL	Additional
05	- 0.3	- ①	3100 / 10170	-	-	P
23	+0.3	- ①	3100 / 10170	-	-	P

① Details not published.

STATE		TAKE OFF MINIMA	
RWY	Facilities	RVR A B C D	
05/23 a			

a Take off Minima must be equal to or greater than the Landing Minima.

GENERAL INFORMATION

- CAUTION**
Bird hazard.

VOR RWY 05

Katsina TWR 125.0 130.0	VOR/DME 113.7 KAT	FAT 046°	THR Elev 1660	AD Elev 1660	TL 65	TA 5000
-------------------------------	-------------------	----------	---------------	--------------	-------	---------

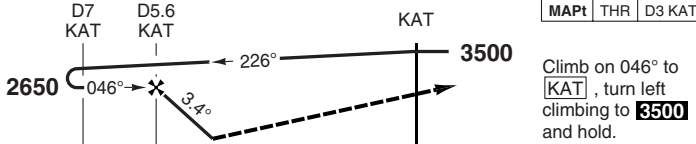
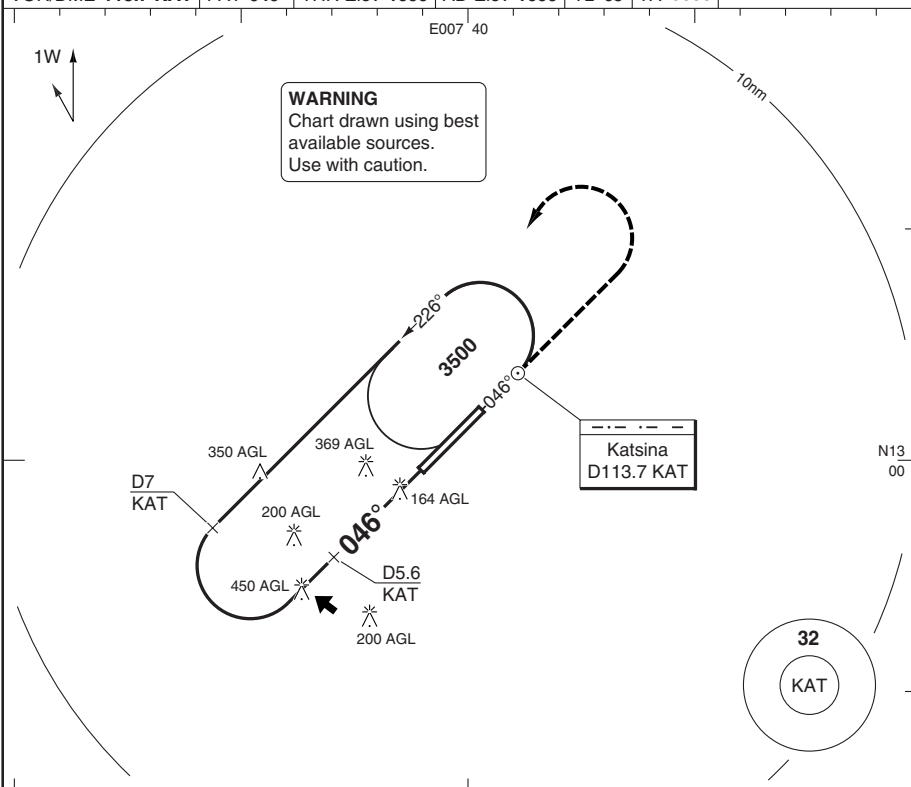
E007 40



WARNING
Chart drawn using best available sources.
Use with caution.

PANS OPS

50 - 1



ACFT	VOR+DME	Circling
A	2090 (430) 2400m	2200 (540) 2.4km
B	2090 (430) 2800m	2200 (540) 2.8km
C	2090 (430) 4400m	2550 (890) 4.4km
D	2090 (430) 4800m	2550 (890) 4.8km

DME KAT	3.4° ALT	LDA 3100x45 10170x147ft
5.6	2650	P
5	2440	
4.0	2090	

GS	80	100	120	140	160
ROD 3.4°	480	600	720	840	960

NALS

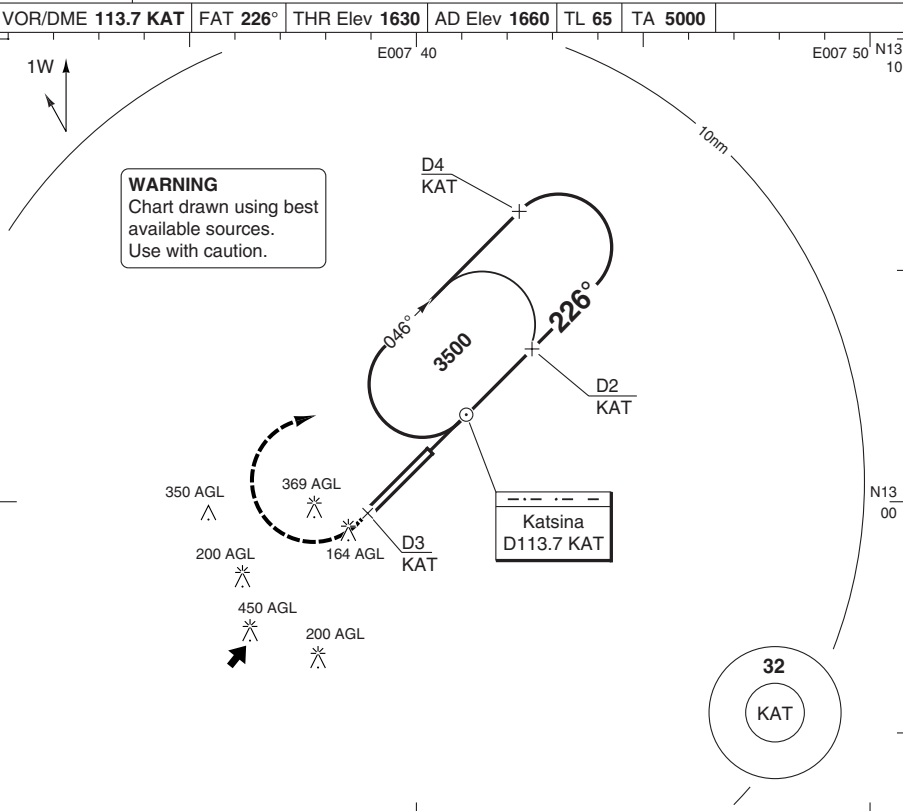
© Navtech - dnkt01iiaip00

Change: New spec.

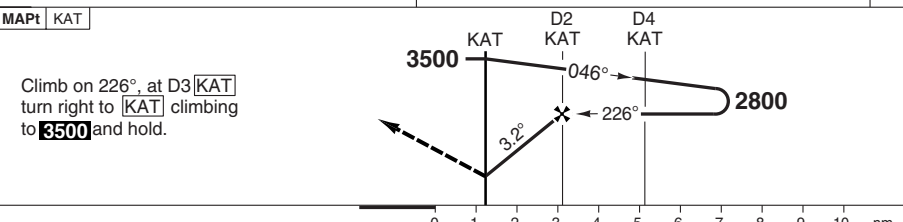
THIS CHART IS A PART OF NAVIGRAPH NDAC AND IS INTENDED FOR FLIGHT SIMULATION USE ONLY

VOR RWY 23

Katsina TWR 125.0 130.0	VOR/DME 113.7 KAT	FAT 226°	THR Elev 1630	AD Elev 1660	TL 65	TA 5000
-------------------------------	-------------------	----------	---------------	--------------	-------	---------



50 - 2



ACFT	VOR+DME	Circling	DME KAT	3.1° ALT	LDA 3100x45 10170x147ft
A	2090 (430) 2400m	2200 (540) 2.4km	2	2800	P
B	2090 (430) 2800m	2200 (540) 2.8km	1	2470	
C	2090 (430) 4400m	2550 (890) 4.4km	MAPt	2140	
D	2090 (430) 4800m	2550 (890) 4.8km	0.1	2090	

GS	80	100	120	140	160
ROD 3.1°	450	560	670	780	900

© Navtech - dnkt02iaip00

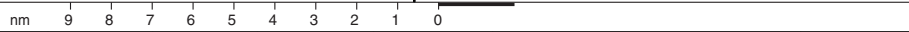
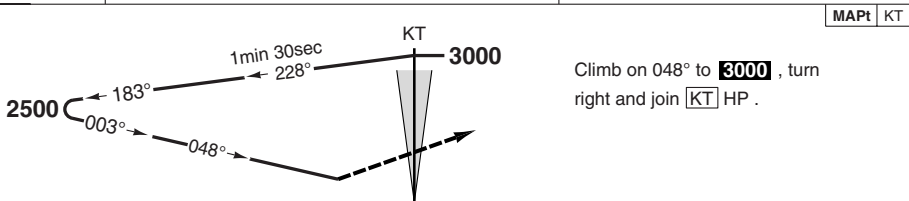
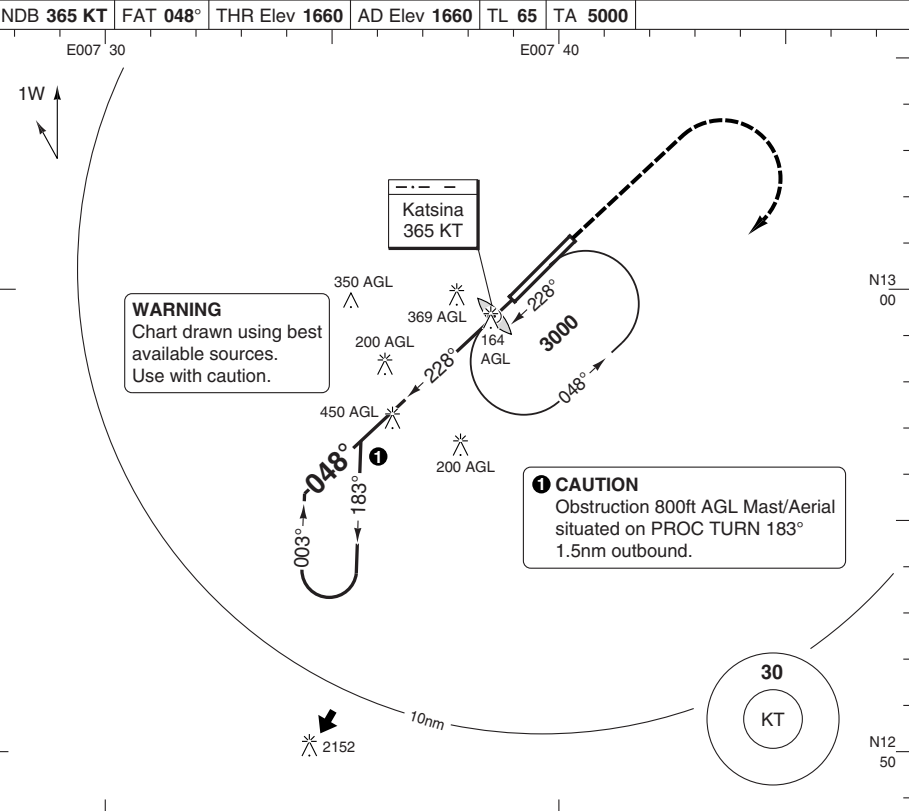
NALS

Change: New spec.

THIS CHART IS A PART OF NAVIGRAPH NDAC AND IS INTENDED FOR FLIGHT SIMULATION USE ONLY

NDB RWY 05

Katsina TWR 125.0 130.0	NDB 365 KT	FAT 048°	THR Elev 1660	AD Elev 1660	TL 65	TA 5000
-------------------------------	------------	----------	---------------	--------------	-------	---------



ACFT	NDB	NDB ^a	Circling	Circling ^a
A	2470 (800) 3600m	2470 (800) 3800m	2470 (800) 3.6km	2470 (800) 3.8km
B	2470 (800) 4400m	2470 (800) 4400m	2480 (810) 4.4km	2480 (810) 4.4km
C	2470 (800) 4800m	2470 (800) 4800m	2560 (900) 4.8km	2560 (900) 4.8km
D	2470 (800) 4800m	2470 (800) 4800m	2560 (900) 4.8km	2560 (900) 4.8km

^a Non CDFA.

LDA 3100x45
10170x147ft

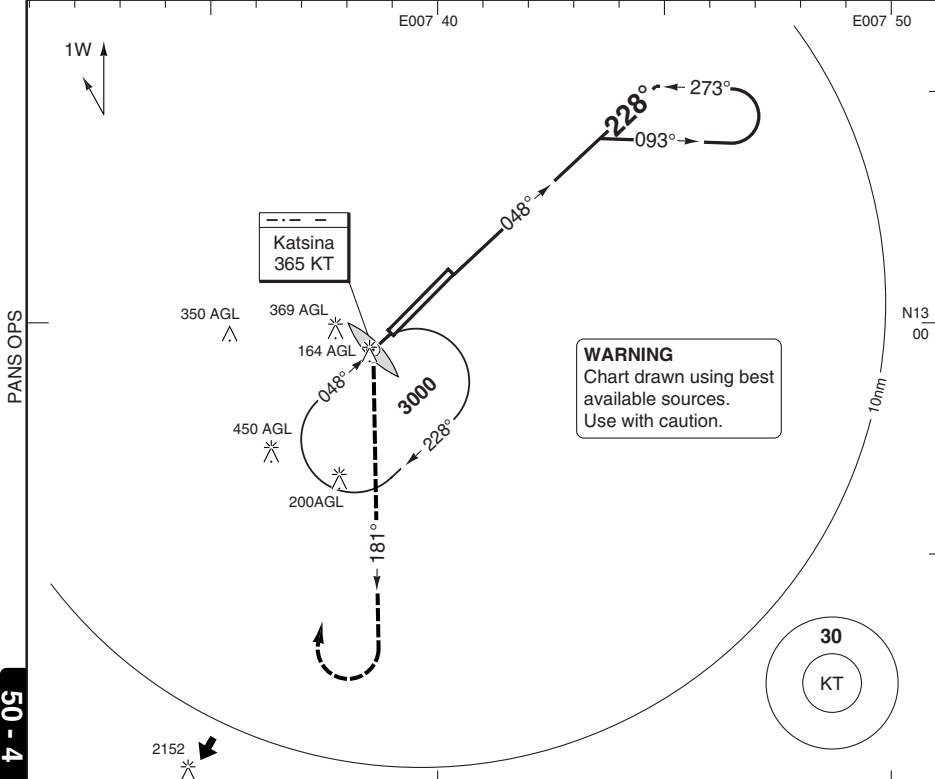


PALS

NDB RWY 23

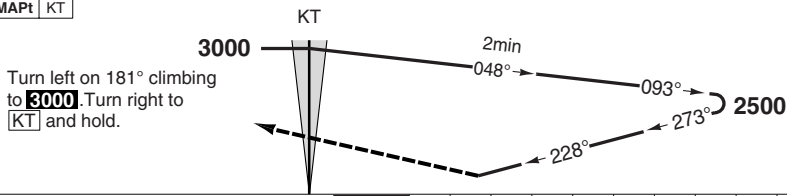
Katsina TWR
125.0
130.0

NDB 365 KT | FAT 228° | THR Elev 1630 | AD Elev 1660 | TL 65 | TA 5000



50 - 4

MAPt KT



0 1 2 3 4 5 6 7 8 9 10 11 nm

ACFT	NDB	NDB ^a	Circling	Circling ^a
A	2330 (670) 3100m	2330 (670) 3300m	2470 (800) 3.1km	2470 (800) 3.3km
B				
C		2330 (670) 3500m	2480 (810) 3.7km	2480 (810) 3.7km
D	2330 (670) 3200m		2560 (900) 4.6km	2560 (900) 4.6km

^a Non CDFA.

LDA 3100x45
10170x147ft

P



NALS