

DNCA

Airport information:

Country: Nigeria

City: CALABAR

Coordinates: N 04° 58.6', E008 20.8

Elevation: 211

Customs: Customs

Fuel: Jet

RFF: CAT 7

hours: 0600-2000

Runways:

Runway 03

Takeoff length: 2450, Landing length: 2450

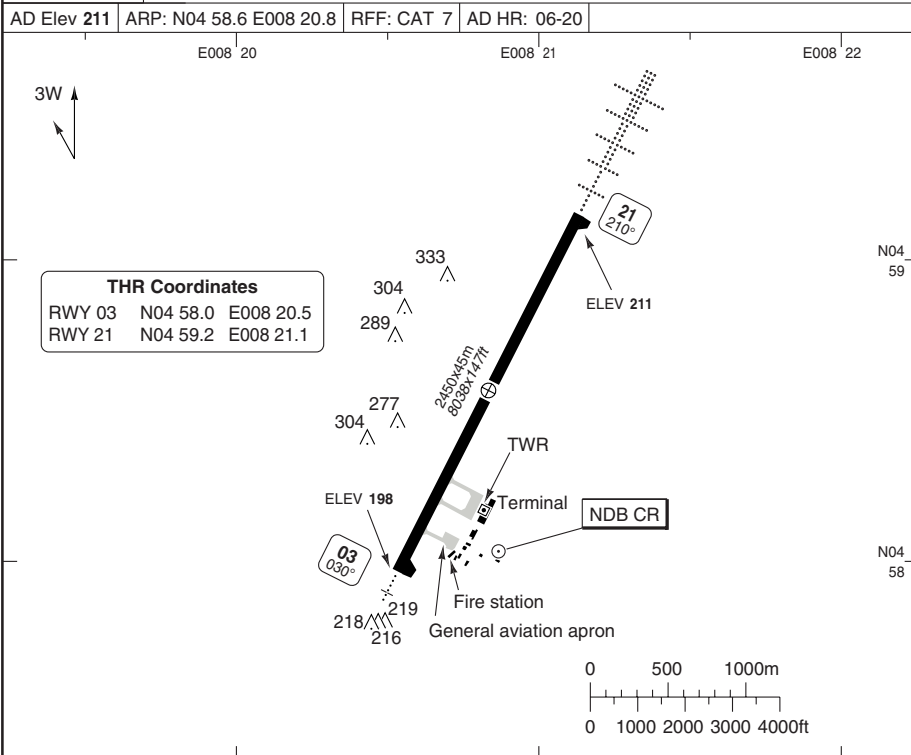
Runway 21

Takeoff length: 2450, Landing length: 2450

AERODROME

10 - 1

Calabar TWR 124.5			
AD Elev 211	ARP: N04 58.6 E008 20.8	RFF: CAT 7	AD HR: 06-20



RWY	Slope	TORA m/ft	LDA m/ft	ALS	REDL	Additional
03	+0.2	2450 / 8038	2450 / 8038	avbl-E	avbl	V 3°
21	-0.2	2450 / 8038	2450 / 8038	avbl-C	avbl	V 3°

STATE		TAKE OFF MINIMA	
RWY	Facilities	RVR A B C D	
03/21 a	-	-	

a Take off minima must be equal to or greater than the landing minima.

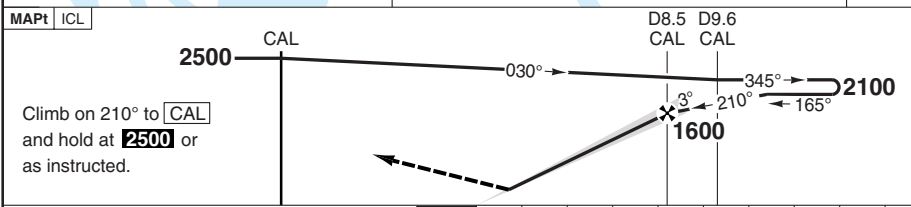
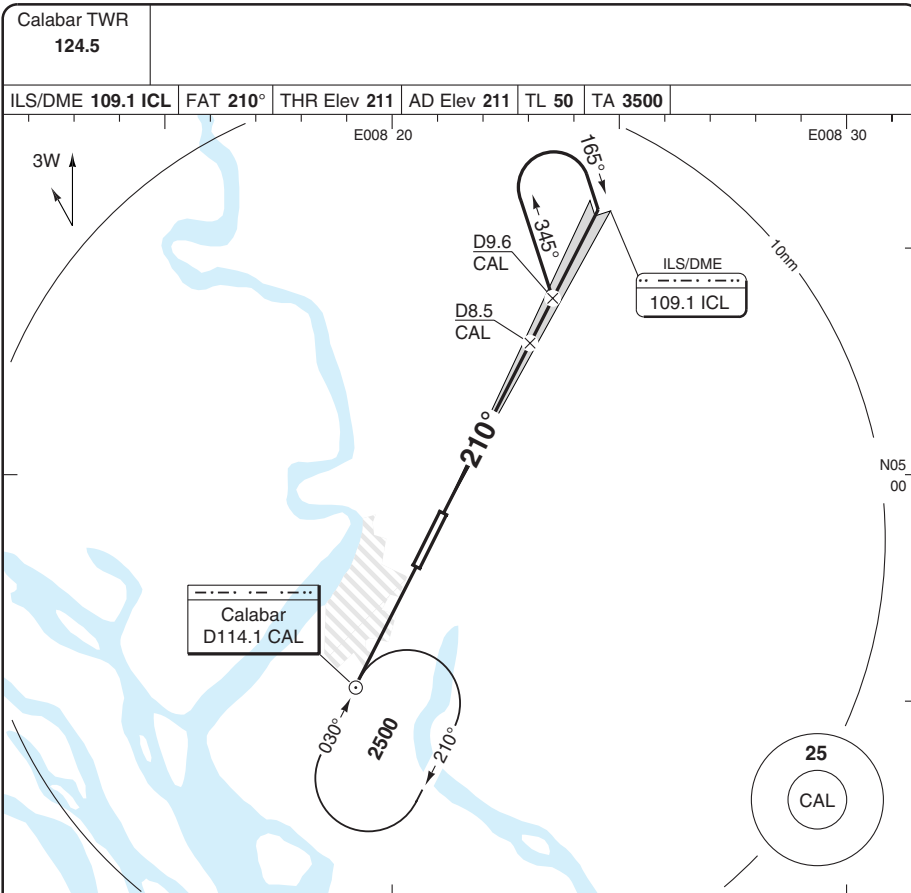
GENERAL INFORMATION

- 1. Warning**
Bird hazard in vicinity of AD.

© Navitech - dnca01laorg0

ILS RWY 21 VOR/DME

Margaret Ekpo CALABAR



ACFT	ILS+DME a	LOC+DME	Circling b	a RVR: 550m	DME CAL	3.0° ALT	DME ICL	3.0° ALT	LDA 2450x45 8038x147ft
A	420 (200) 0.8km	500 (290) 1400m	780 (570) 1.8km	b No circling to the Northeast.	10.1	2100	5.8	2100	V 3° FALS
B	430 (210) 0.8km		780 (570) 1.8km		9	1760	5	1860	
C	440 (220) 0.8km	500 (290) 1600m	990 (780) 4.4km		8	1450	4	1540	
D	450 (230) 0.8km	500 (290) 2400m	1490 (1280) 4.4km		7	1130	3	1220	
				6	810	2	900		
				5.0	500	0.8	500		
GS	80	100	120	140	160				
ROD 3.0°	430	540	640	750	860				

© Navtech - dnca01aiip00

50 - 1

Change: New spec.

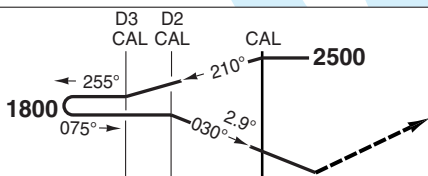
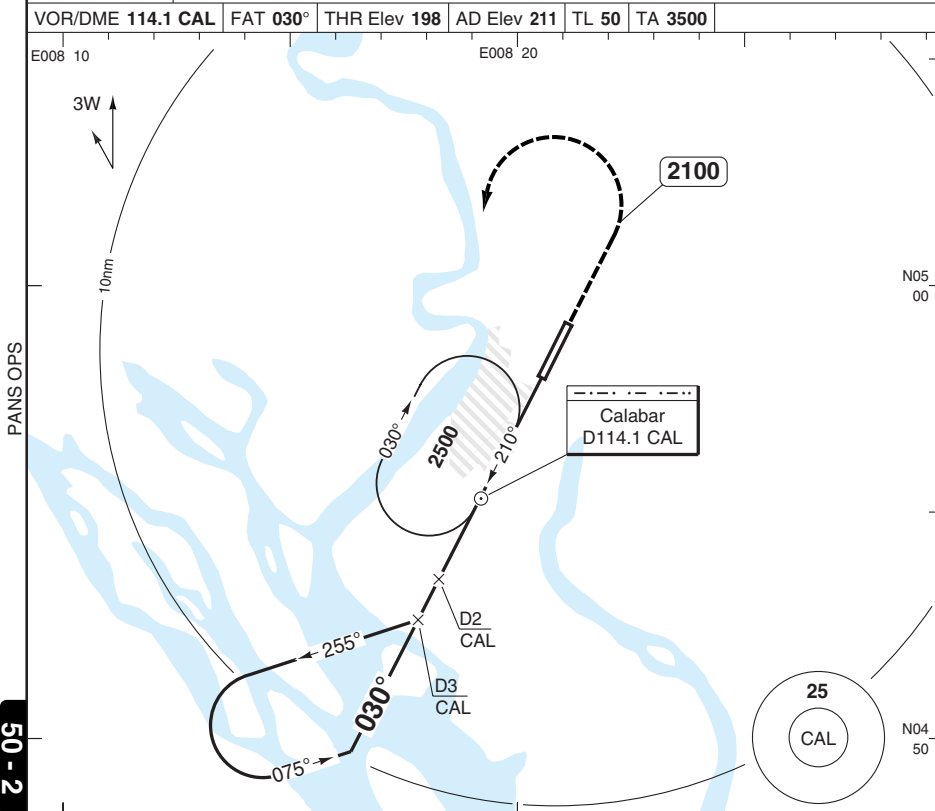
THIS CHART IS A PART OF NAVIGRAPH NDAC AND IS INTENDED FOR FLIGHT SIMULATION USE ONLY

VOR RWY 03 VOR/DME

Margaret Ekpo **CALABAR**

Calabar TWR
124.5

VOR/DME 114.1 CAL FAT 030° THR Elev 198 AD Elev 211 TL 50 TA 3500



Climb on 030° to 2100, turn left to CAL and hold at 2500 or as instructed.

MAPt THR

nm 9 8 7 6 5 4 3 2 1 0

ACFT **VOR+DME** **Circling** **a** **a** No Circling to the Northeast.

STATE	A	B	C	D
	710 (510)	780 (570)	780 (570)	990 (780)
	1.6km	1.8km	1.8km	4.4km
	710 (510)	780 (570)	990 (780)	1490 (1280)
	2.0km	1.8km	4.4km	4.4km
	710 (510)	780 (570)	990 (780)	1490 (1280)
	2.8km	1.8km	4.4km	4.4km

DME CAL	3.0° ALT	LDA 2450x45 8038x147ft
2	1800	V
1	1490	
0	1180	
1	860	
1.5	710	

GS	80	100	120	140	160
ROD 3.0°	420	530	630	740	840

BALS

© Navtech - dnca02lap00

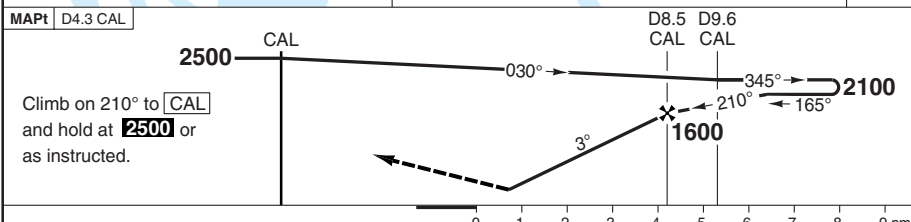
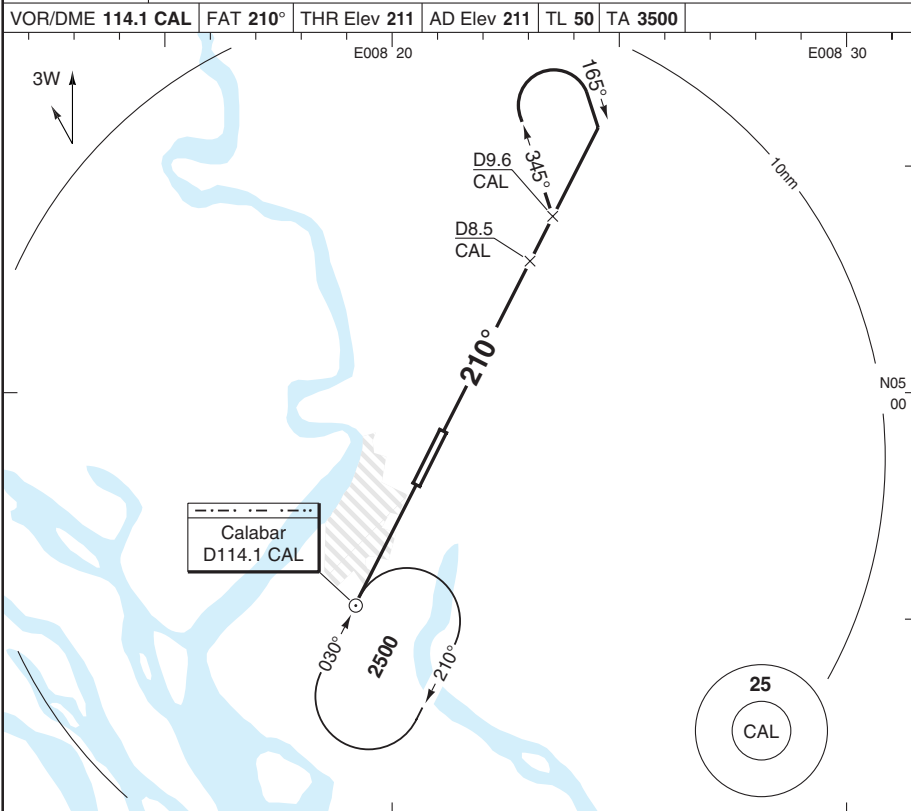
Change: New spec.

THIS CHART IS A PART OF NAVIGRAPH NDAC AND IS INTENDED FOR FLIGHT SIMULATION USE ONLY

VOR RWY 21 VOR/DME

Margaret Ekpo CALABAR

Calabar TWR 124.5
 VOR/DME 114.1 CAL FAT 210° THR Elev 211 AD Elev 211 TL 50 TA 3500



Climb on 210° to **CAL** and hold at **2500** or as instructed.

ACFT	VOR+DME	Circling a	a No circling to the Northeast.	DME CAL	3.0° ALT	LDA 2450x45 8038x147ft V 3°
A	640 (430)	780 (570) 1.8km		10.1	2100	
B	1.6km	780 (570) 1.8km		9	1760	
C	640 (430)	990 (780) 2.0km		8	1450	
D	640 (430)	1490 (1280) 2.4km		7	1130	
				6	810	
				5.5	640	

GS	80	100	120	140	160
ROD 3.0°	430	540	640	750	860

50 - 3

Reverse side blank

© Navtech - dnca03iap00

Change: New spec.

THIS CHART IS A PART OF NAVIGRAPH NDAC AND IS INTENDED FOR FLIGHT SIMULATION USE ONLY