

Airport information:

Country: Algeria

City: ORAN

Coordinates: N 35° 37.6', W 000° 36.7'

Elevation: 298

Customs: : H24

Fuel: Jet A1, 100LL

RFF: CAT 9

hours: H24.

Runways:

Runway 07L

Takeoff length: 3600, Landing length: 3600

Runway 07R

Takeoff length: 3000, Landing length: 3000

Runway 25L

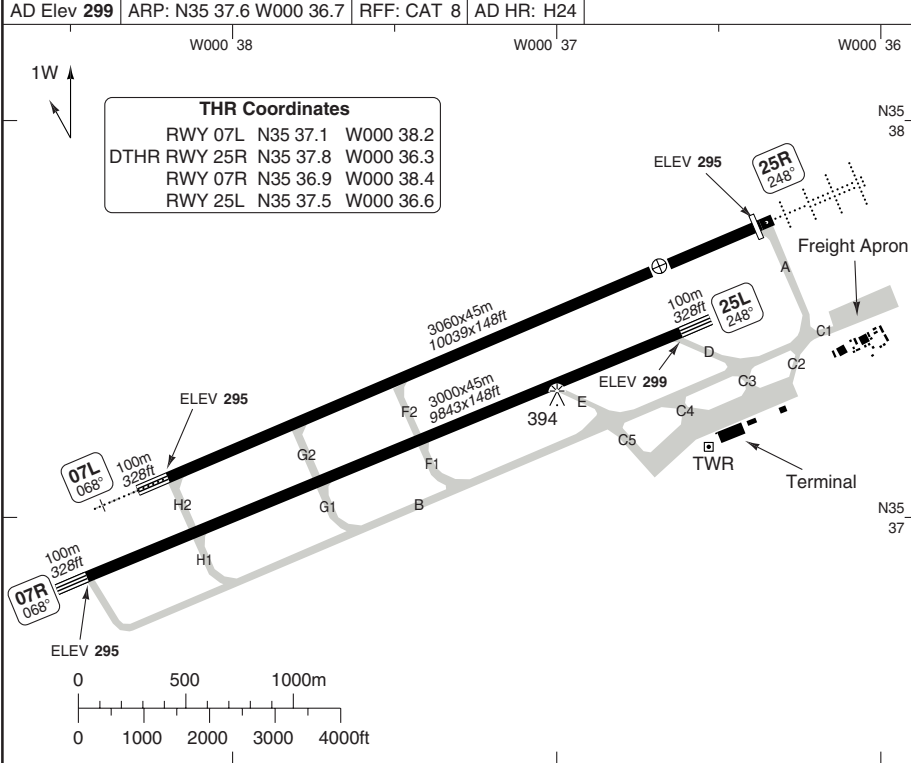
Takeoff length: 3000, Landing length: 3000

Runway 25R

Takeoff length: 3600, Landing length: 3540

AERODROME

Oran TWR 118.1 119.7	AD Elev 299			ARP: N35 37.6 W000 36.7	RFF: CAT 8	AD HR: H24
----------------------------	-------------	--	--	-------------------------	------------	------------



RWY	Slope	TORA m/ft	LDA m/ft	ALS	REDL	Additional
07L	0	3060 / 10039	3060 / 10039	H-E ①	H ②	-
25R	0	3060 / 10039	3000 / 9843	H-C ③	H ②	P 3°
07R	0	3000 / 9843	3000 / 9843	-	H ②	P 3.06°
25L	0	3000 / 9843	3000 / 9843	-	H ②	P 3°

① 360m ② White ③ 630m

STATE TAKE OFF MINIMA

RWY	Facilities	RVR A B C D
All	NIL (day only) or RCL (day only) or RCL + REDL	500m

GENERAL INFORMATION

- WARNING**
Presence of birds south of the maneuvering area.

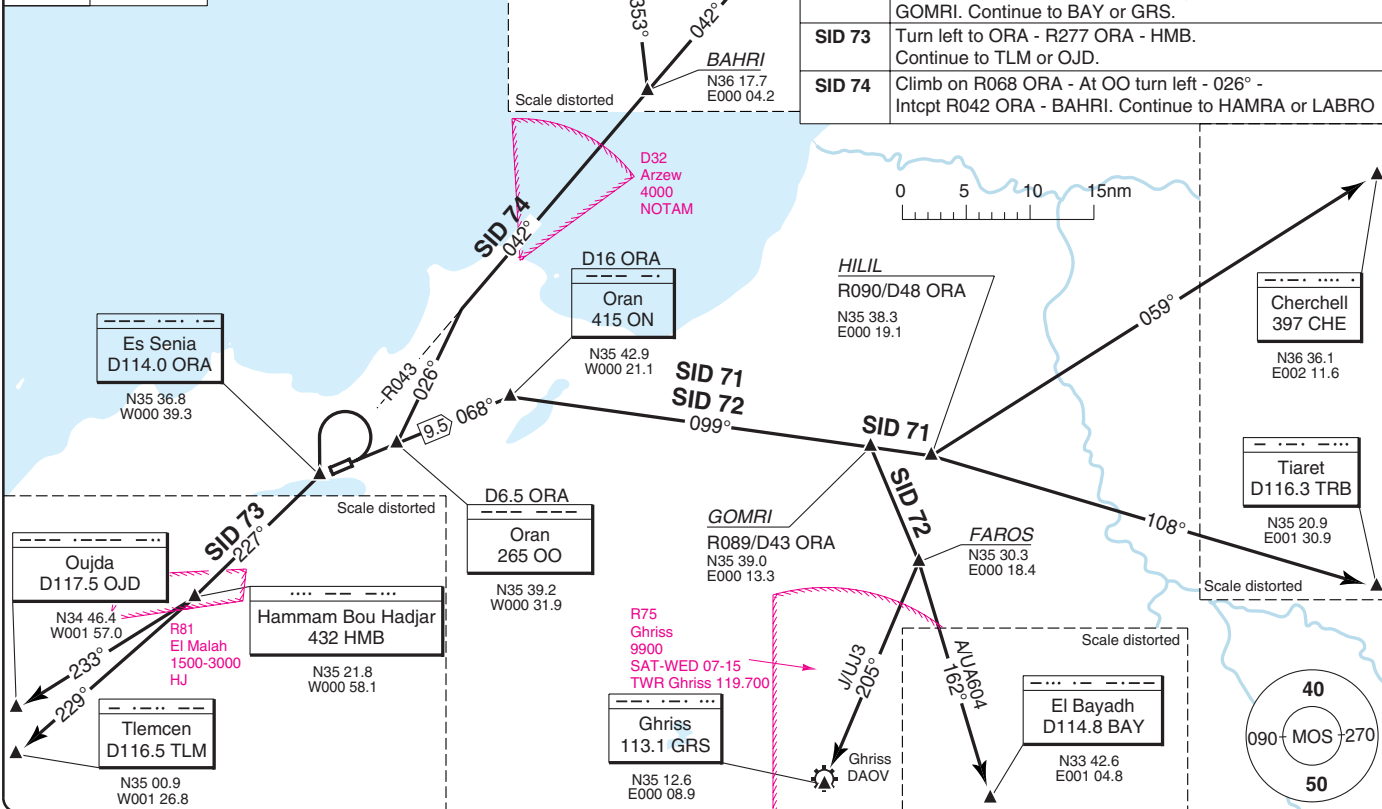
© Navtech - daoo01laorgo

Reverse side blank

Change: New spec.

THIS CHART IS A PART OF NAVIGRAPH NDAC AND IS INTENDED FOR FLIGHT SIMULATION USE ONLY

Oran TWR	APP
118.1	128.2
119.7	121.1
TA 3250	AD Elev 299



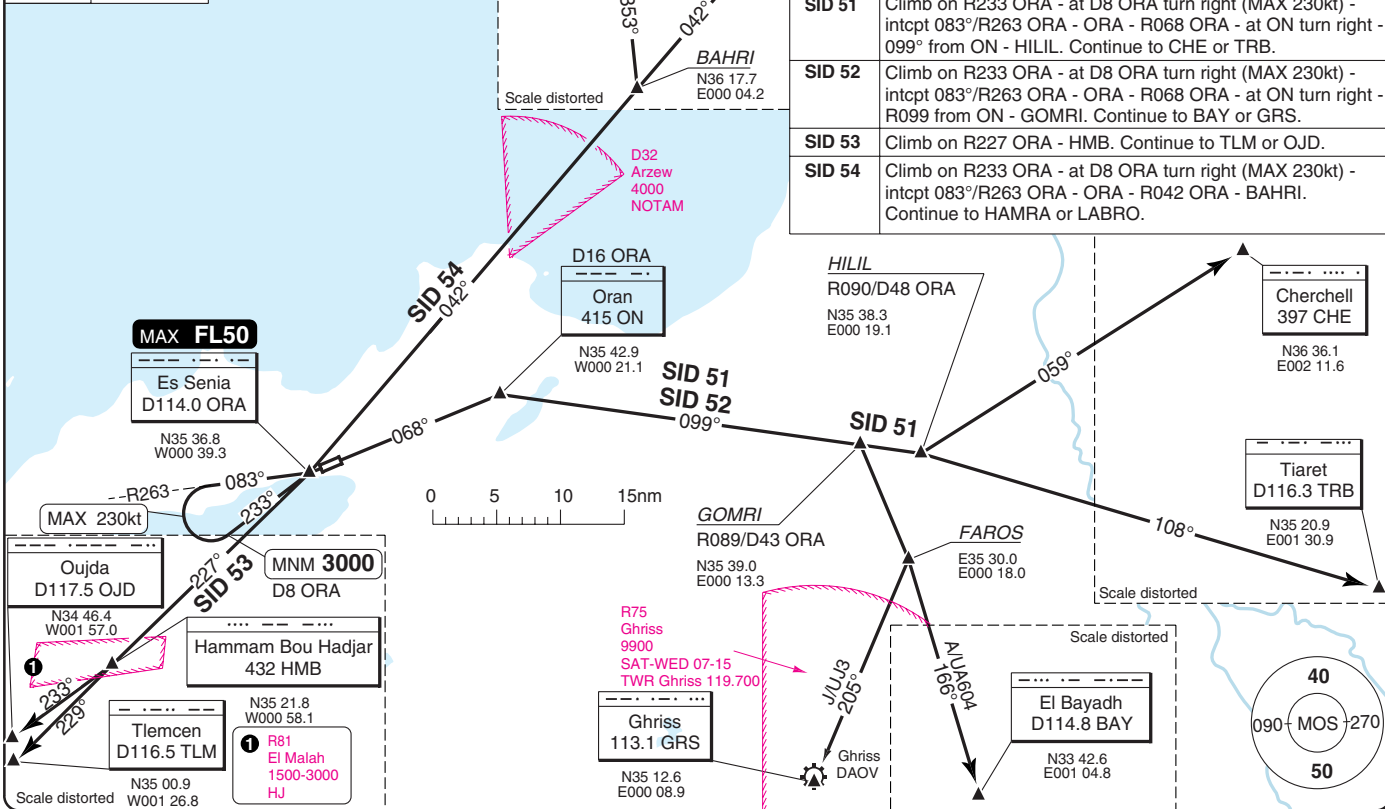
SID	Routing
SID 71	Climb on R068 ORA - At ON turn right - 099° from ON - HILIL. Continue to CHE or TRB.
SID 72	Climb on R068 ORA - At ON turn right - 099° from ON - GOMRI. Continue to BAY or GRS.
SID 73	Turn left to ORA - R277 ORA - HMB. Continue to TLM or OJD.
SID 74	Climb on R068 ORA - At OO turn left - 026° - Intcpt R042 ORA - BAHRI. Continue to HAMRA or LABRO

SID RWY 07L/R

30 - 1 | 01 DEC 10

Algieria - DAOO / ORN
Es Senia ORAN

Oran TWR	APP
118.1	128.2
119.7	121.1
TA 3250	AD Elev 299



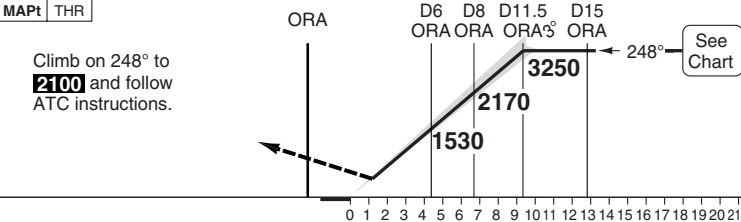
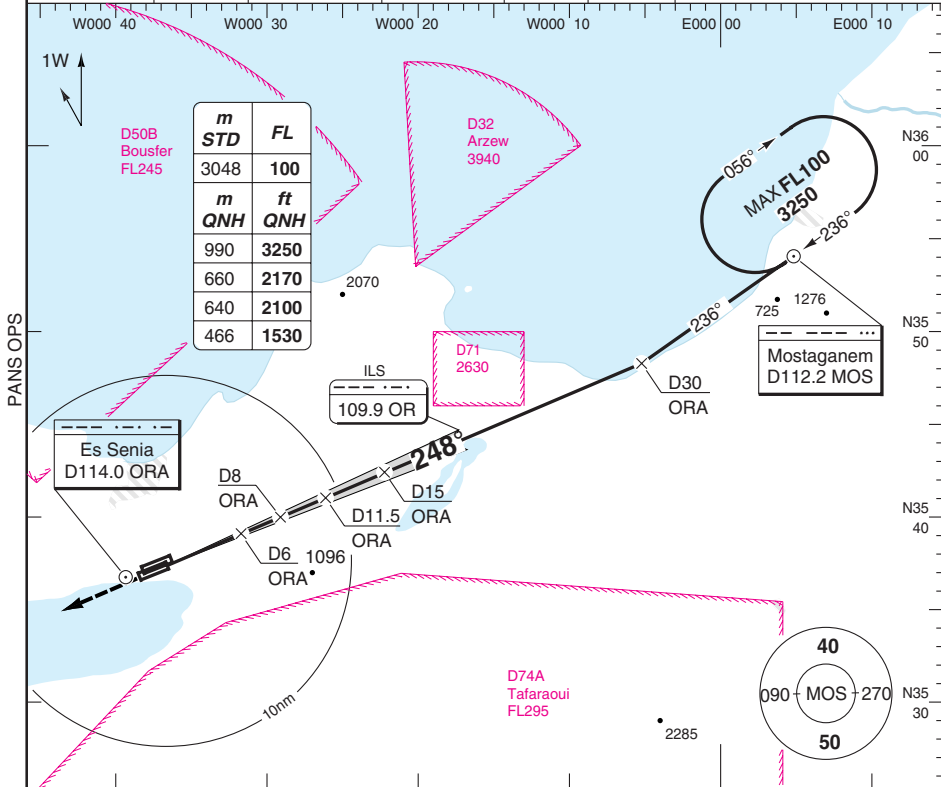
MNM CLIMB GRADIENT: 5% to D8 ORA. (Except SID 53)
ALTITUDE RESTRICTION: (Except SID 53) D8 MNM 3000, ORA MAX FL50.

SID	Routeing
SID 51	Climb on R233 ORA - at D8 ORA turn right (MAX 230kt) - intcpt 083°/R263 ORA - ORA - R068 ORA - at ON turn right - 099° from ON - HILIL. Continue to CHE or TRB.
SID 52	Climb on R233 ORA - at D8 ORA turn right (MAX 230kt) - intcpt 083°/R263 ORA - ORA - R068 ORA - at ON turn right - R099 from ON - GOMRI. Continue to BAY or GRS.
SID 53	Climb on R227 ORA - HMB. Continue to TLM or OJD.
SID 54	Climb on R233 ORA - at D8 ORA turn right (MAX 230kt) - intcpt 083°/R263 ORA - ORA - R042 ORA - BAHRI. Continue to HAMRA or LABRO.

ILS RWY 25L VOR/DME

Oran APP	TWR
128.2	118.1
121.1	119.7

ILS 109.9 OR FAT 248° THR Elev 299 AD Elev 299 TL ATC TA 3250



ACFT	ILS+DME	LOC+DME	Circling
A	500 (200) 1200m	680 (380) 2.4km	960 (660) 2.4km
B			
C	520 (220) 1200m		1720 (1420) 5.0km
D		680 (380) 2.8km	

DME	3.0°	LDA 3000x45
ORA	ALT	9843x148ft
11.4	3250	P 3°
10	2810	
9	2490	
8	2180	
7	1860	
6	1540	
5	1220	
3.3	680	

GS	80	100	120	140	160
ROD 3.0°	430	540	640	750	860

© Navtech - daoo01iaip00

50 - 1

NALS

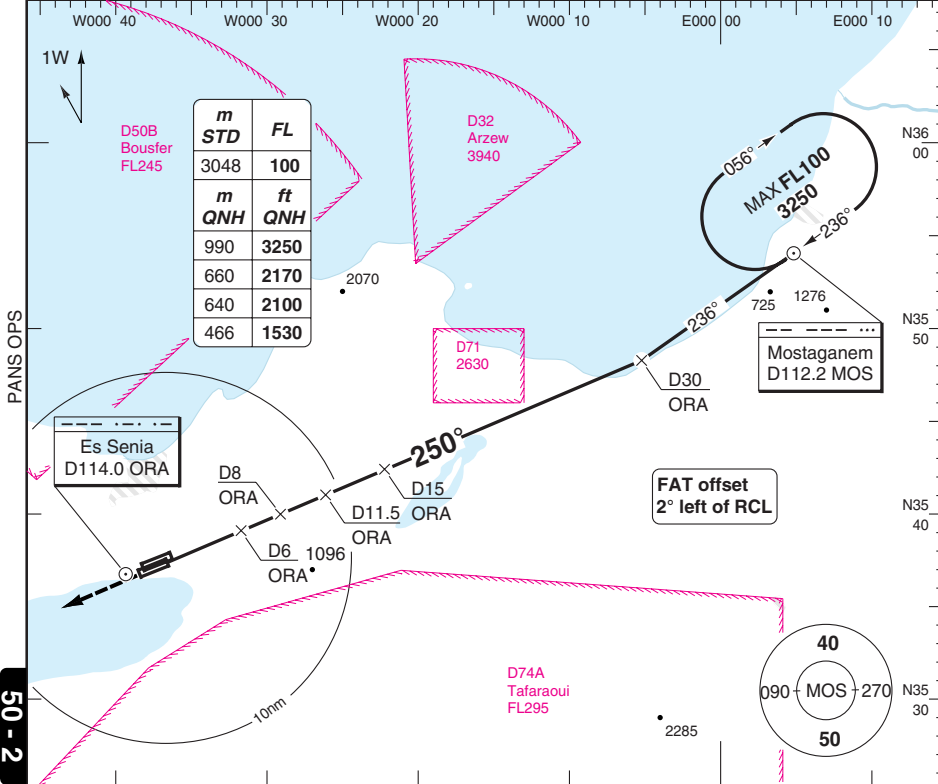
Change: New spec.

THIS CHART IS A PART OF NAVIGRAPH NDAC AND IS INTENDED FOR FLIGHT SIMULATION USE ONLY

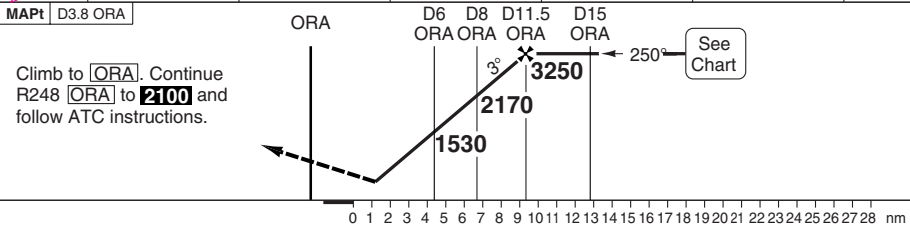
VOR RWY 25L VOR/DME ORA

Oran APP	TWR					
128.2	118.1					
121.1	119.7					

VOR/DME	114.0 ORA	FAT 250°	THR Elev 299	AD Elev 299	TL ATC	TA 3250
---------	-----------	----------	--------------	-------------	--------	---------



50 - 2



ACFT	VOR+DME	Circling						DME	3.0°	LDA 3000x45
A	800 (500)	960 (660)						ORA	ALT	9843x148ft
B	2.4km	2.4km						11.4	3250	P 3°
C	800 (500)	1720 (1420)						10	2810	NALS
D	800 (500)	5.0km						9	2490	
								8	2180	
								7	1860	
								6	1540	
								5	1220	
GS	80	100	120	140	160					
ROD 3.0°	430	540	640	750	860					
							3.7	800		

© Navtech - daoo02laip00

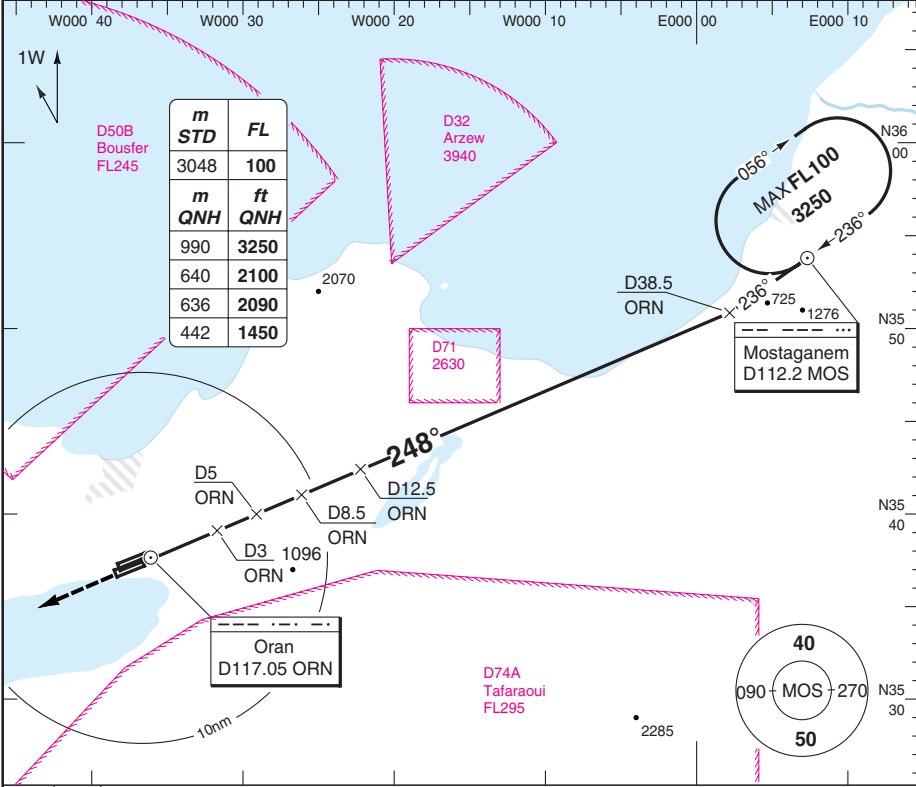
Change: New spec.

THIS CHART IS A PART OF NAVIGRAPH NDAC AND IS INTENDED FOR FLIGHT SIMULATION USE ONLY

VOR RWY 25L VOR/DME ORN

Oran APP	TWR					
128.2	118.1					
121.1	119.7					

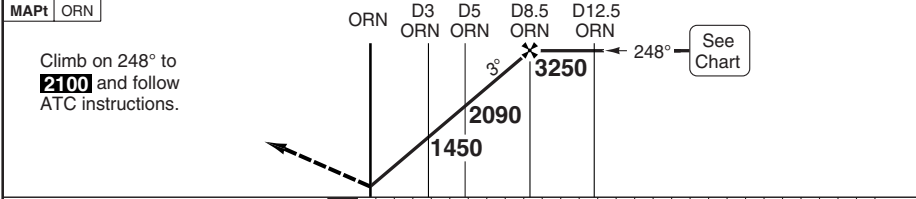
VOR/DME 117.05 ORN	FAT 248°	THR Elev 299	AD Elev 299	TL ATC	TA 3250
--------------------	----------	--------------	-------------	--------	---------



m	STD	FL
3048		100
m	QNH	ft
990		3250
640		2100
636		2090
442		1450

PANS OPS

50 - 3



Climb on 248° to **2100** and follow ATC instructions.

MAPt	ORN	ORN	D3 ORN	D5 ORN	D8.5 ORN	D12.5 ORN	See Chart
------	-----	-----	--------	--------	----------	-----------	-----------

ACFT	VOR+DME	Circling	DME ORN	3.1° ALT	LDA 3000x45 9843x148ft P 3°	
A	800 (500) 2.4km	960 (660) 2.4km	8.5	3250		
B			7	2770		
C	800 (500) 2.8km	1720 (1420) 5.0km	6	2450		
D	800 (500) 3.6km		5	2120		
			4	1800		
			3	1470		
			2	1150		
			0.9	800		
GS	80	100	120	140		160
ROD 3.1°	440	550	650	760		870

© Navtech - daoo03iaip00

NALS

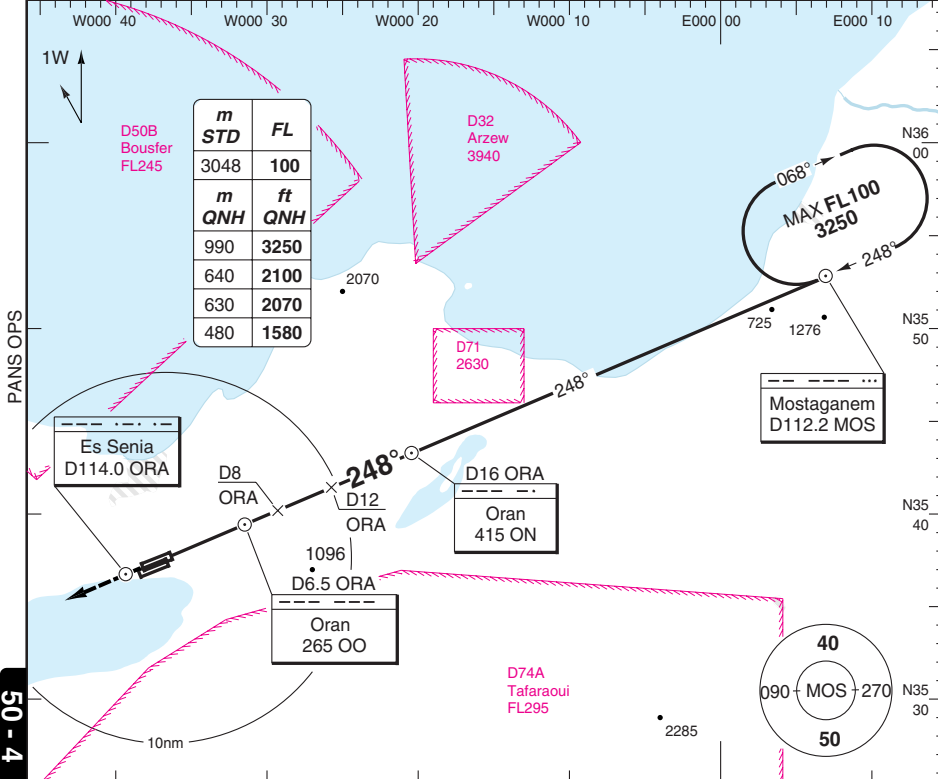
Change: New spec.

THIS CHART IS A PART OF NAVIGRAPH NDAC AND IS INTENDED FOR FLIGHT SIMULATION USE ONLY

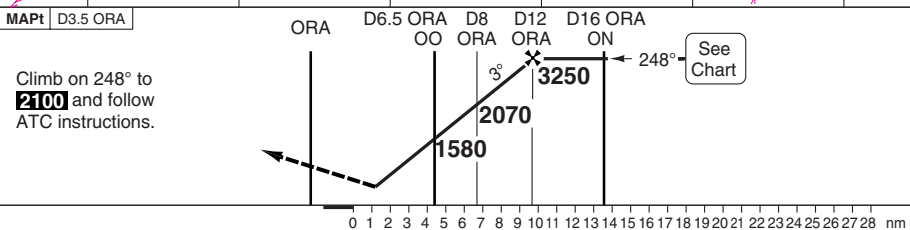
VOR RWY 25R VOR/DME

Oran APP	TWR					
128.2	118.1					
121.1	119.7					

VOR/DME	114.0 ORA	FAT 248°	THR Elev 295	AD Elev 299	TL ATC	TA 3250
---------	-----------	----------	--------------	-------------	--------	---------



50 - 4



ACFT	VOR+DME	Circling	DME ORA	3.0° ALT	LDA 3000x45 9843x148ft	
A	800 (500) 2.0km	960 (660) 2.0km	11.7	3250		
B			10	2710		
C	800 (500) 2.4km	1720 (1420) 5.0km	9	2390		
D	800 (500) 3.2km		8	2080		
			7	1760		
			6	1440		
			5	1120		
			4.0	800		
GS	80	100	120	140		160
ROD 3.0°	430	540	640	750		860

© Navtech - daoo04aip00

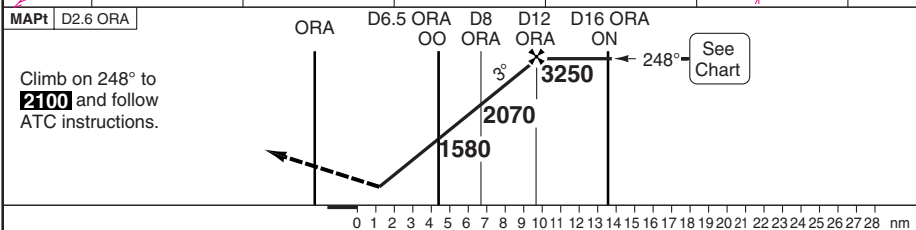
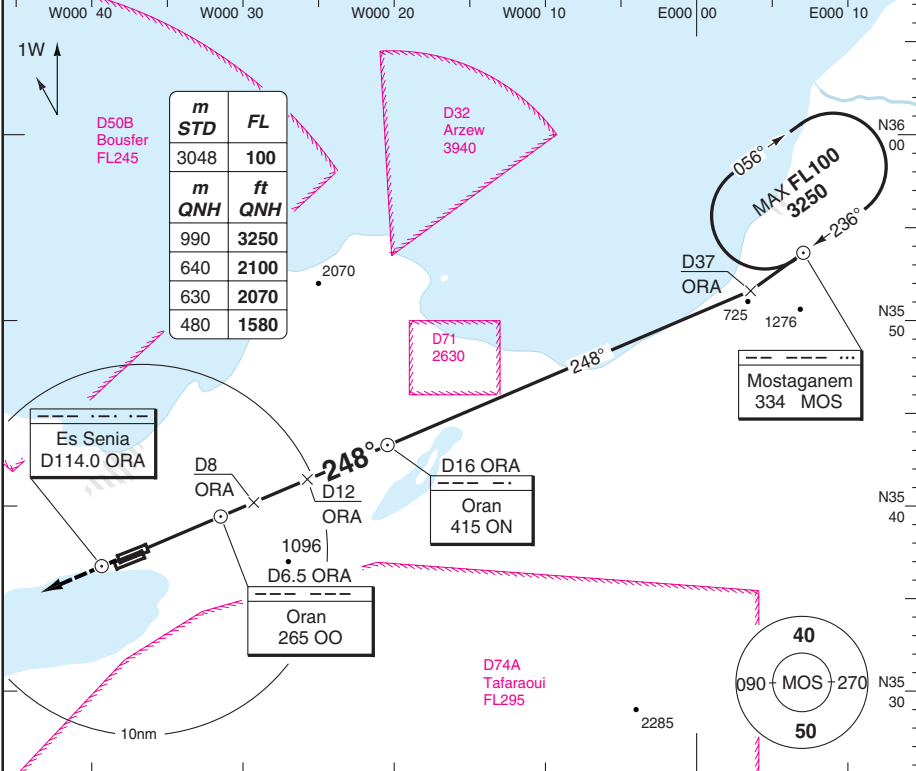
Change: New spec.

THIS CHART IS A PART OF NAVIGRAPH NDAC AND IS INTENDED FOR FLIGHT SIMULATION USE ONLY

VOR RWY 25R VOR/DME and NDB

Oran APP	TWR					
128.2	118.1					
121.1	119.7					

VOR/DME	114.0 ORA	FAT 248°	THR Elev 295	AD Elev 299	TL ATC	TA 3250
---------	-----------	----------	--------------	-------------	--------	---------



ACFT	VOR+DME	Circling	DME ORA	3.0° ALT	LDA 3000x45	
A	800 (500) 2.0km	960 (660) 2.0km	11.7	3250	9843x148ft	
B			10	2710	P 3° FALS Reverse side blank	
C	800 (500) 2.4km	1720 (1420) 5.0km	9	2390		
D	800 (500) 3.2km		8	2080		
			7	1760		
			6	1440		
GS	80	100	120	140	160	
ROD 3.0°	430	540	640	750	860	
			5	1120		
			4.0	800		

© Navtech - daoo05aip00

50 - 5

JAR-OPS Landing Minima

Es Senia **ORAN**

The following Minima is for Public Transport aircraft and conforms to JAR-OPS1 regulations.

STRAIGHT-IN APPROACH		C				D			
R/W	Procedure	DA/ MDA QNH ft	DH/ MDH QFE ft	VIS m	VIS No ALS m	DA/ MDA QNH ft	DH/ MDH QFE ft	VIS m	VIS No ALS m
25L	ILS/DME (2)	520	220	1200	N/A	520	220	1200	N/A
25L	LOC/DME (1)	680	380	2400	N/A	680	380	2800	N/A
25L	VOR/DME (ORA)(ORN)(1)	800	500	2800	N/A	800	500	3600	N/A
25R	VOR/DME (ORA)(1)	800	500	2400	2400	800	500	3200	3200
25R	NDB-VOR/DME (ORA)(1)	800	500	2400	2400	800	500	3200	3200

Notes:

- (1) Procedure based on aerodrome elevation.
(2) Values shown are RVR/VIS.

CIRCLING		C			D		
R/W	Procedure	MDA QNH ft	MDH QFE ft	Vis m	MDA QNH ft	MDH QFE ft	Vis m
25L/R	All procs	1720	1420	5000	1720	1420	5000

Notes:

TAKE-OFF		C		D	
Runway	Facilities	RVR	Vis	RVR	Vis
All	REDL and/or RCL	-	500	-	500

Notes:

JAR-OPS Landing Minima

Es Senia **ORAN**

The following Minima is for Public Transport aircraft and conforms to JAR-OPS1 regulations.

STRAIGHT-IN APPROACH		A				B			
R/W	Procedure	DA/ MDA QNH ft	DH/ MDH QFE ft	VIS m	VIS No ALS m	DA/ MDA QNH ft	DH/ MDH QFE ft	VIS m	VIS No ALS m
25L	ILS/DME (2)	500	200	1200	N/A	500	200	1200	N/A
25L	LOC/DME (1)	680	380	2400	N/A	680	380	2400	N/A
25L	VOR/DME (ORA)(ORN)(1)	800	500	2400	N/A	800	500	2400	N/A
25R	VOR/DME (ORA)(1)	800	500	2000	2000	800	500	2000	2000
25R	NDB-VOR/DME (ORA)(1)	800	500	2000	2000	800	500	2000	2000

Notes:

- (1) Procedure based on aerodrome elevation.
(2) Values shown are RVR/VIS.

CIRCLING		A			B		
R/W	Procedure	MDA QNH ft	MDH QFE ft	Vis m	MDA QNH ft	MDH QFE ft	Vis m
25L/R	All procs	960	660	1600	960	660	1600

Notes:

TAKE-OFF		A		B	
Runway	Facilities	RVR	Vis	RVR	Vis
All	REDL and/or RCL	-	500	-	500

Notes: