

Airport information:

Country: Canada

City: SASKATOON

Coordinates: N 52° 10.3', W 106° 42.0'

Elevation: 1653

Customs: Customs: Limited

Fuel: 100LL, F40, JB, Jet A1, Jet A1+

RFF: CAT 7, 1200-0530.

hours: H24

Runways:

Runway 09

Takeoff length: 2529, Landing length: 2529

Runway 15

Takeoff length: 1889, Landing length: 1889

Runway 27

Takeoff length: 2529, Landing length: 2529

Runway 33

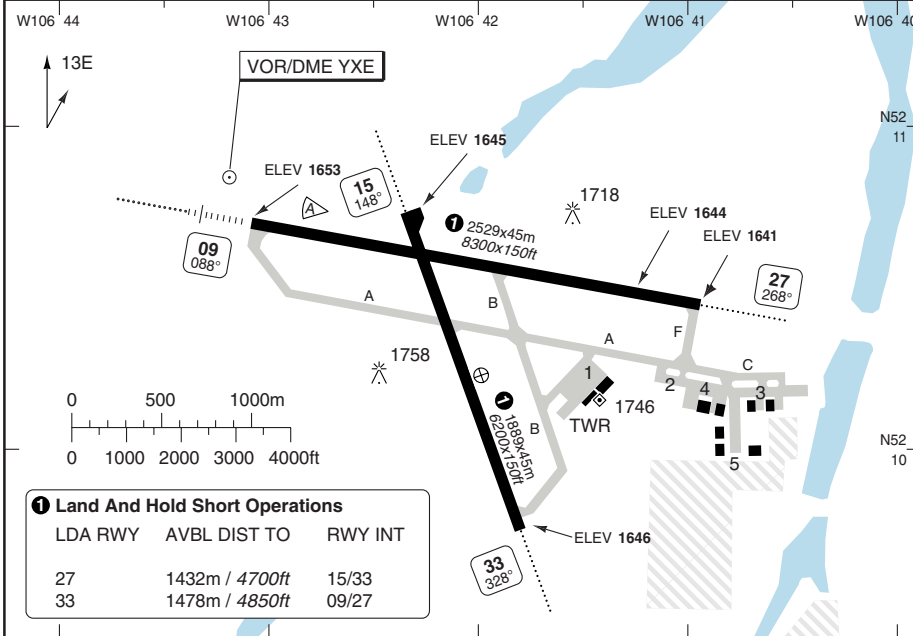
Takeoff length: 1889, Landing length: 1889

AERODROME

John G Diefenbaker INTL **SASKATOON**

Saskatoon GND (D) 121.9	TWR 118.3	DEP 119.9	ATIS (D) 128.4
-----------------------------------	---------------------	---------------------	--------------------------

AD Elev 1654	ARP: N52 10.3 W106 42.0	RFF: CAT 7, Limited HR, Contact Operator	AD HR: H24
---------------------	-------------------------	--	------------



1 Land And Hold Short Operations

LDA RWY	AVBL DIST TO	RWY INT
27	1432m / 4700ft	15/33
33	1478m / 4850ft	09/27

RWY	Slope	TORA m/ft	LDA m/ft	ALS	REDL	Additional
09	-0.1	2529 / 8300	2529 / 8300	H-I	H	-
27	+0.1	2529 / 8300	2529 / 8300	H-L ②	H	P 3°
15	0	1889 / 6200	1889 / 6200	M-L ②	M	P 3°
33	0	1889 / 6200	1889 / 6200	M-L ②	M	P 3°

② 450m

STATE TAKE OFF MINIMA

RWY	Facilities	RVR/VIS
All ①	REDL+RCL	1/2sm

① Authorized operators: **0 / 1200** or 1/4
 For conditions, see Canada RAR.
 For filling as ALTN, see Canada RAR.

GENERAL INFORMATION

- 1. **SPEED**
MAX 250kt below 10000ft.
- 2. **CIRCUITS**
Right hand RWY 15 and 27.
- 3. **TWY RESTRICTION**
TWY C uncontrolled.

© Navitech - cyxe01laorg0

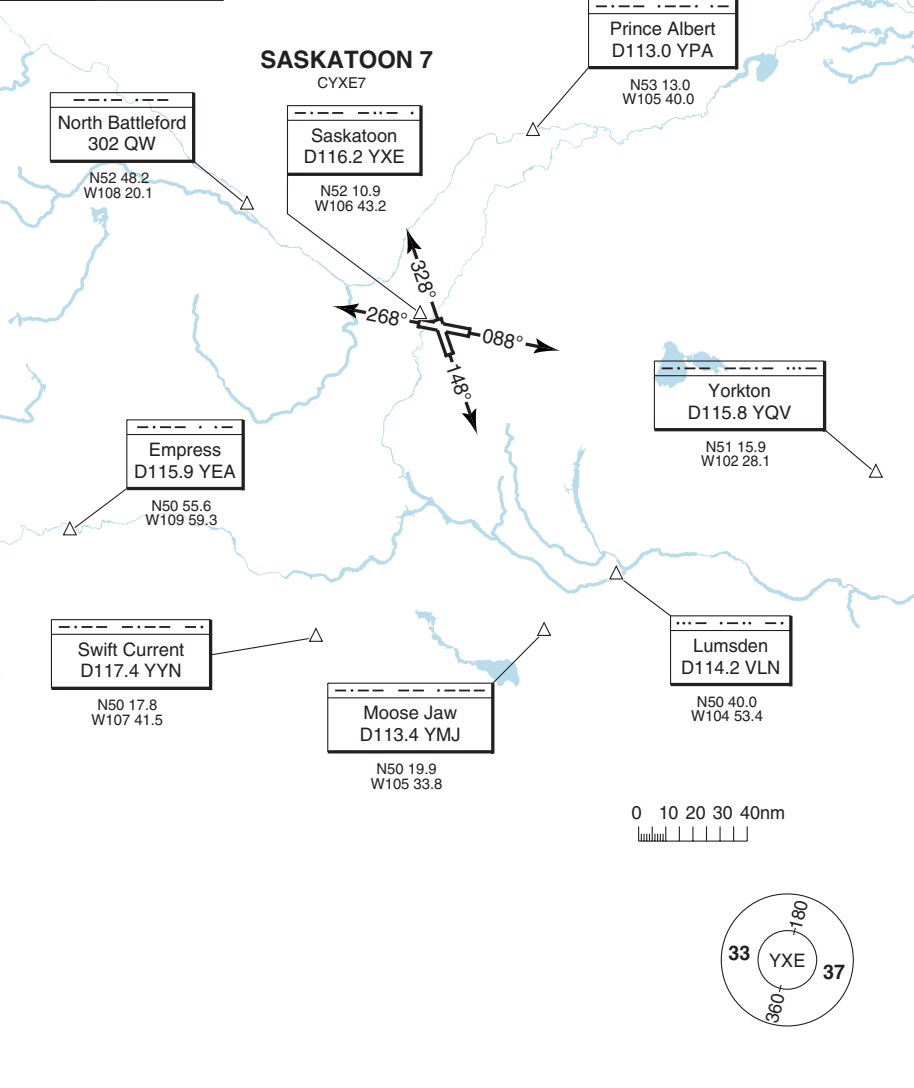
Reverse side blank

SID SASKATOON 7

John G Diefenbaker INTL **SASKATOON**

Saskatoon GND (D) 121.9	TWR 118.3	DEP 119.9	ATIS (D) 128.4
-----------------------------------	---------------------	---------------------	--------------------------

TA **18000** | AD Elev **1654**



NOTE: Expect CLR to flight planned ALT/FL within 10min after DEP.
SPEED: MAX 250kt below 10000ft.
ALT RESTRICTION: Maintain 5000 or flight planned ALT, whichever is lower.

SID	Routeing
SASKATOON 7	Climb on RWY HDG or as assigned by ATC. Anticipate RAD vectors to filed/assigned route.

Change: New spec.

© Navitech - cyxe01daorg0

Reverse side blank

© Navtech - cyxe01aorg0

Saskatoon ARR 119.9	TWR 118.3	GND (D) 121.9	ATIS (D) 128.4
-------------------------------	---------------------	-------------------------	--------------------------

TL ATC AD Elev 1654

SPEED
MAX 250kt below 10000ft.

FACF KESGA
MNM 3300
N52 18.6
W106 46.7

DTW VERLI
MAX 200kt
MNM 4300
N52 20.2
W106 39.0

FACF TABAK
MNM 3300
N52 12.3
W106 56.3

Yellowhead
397 ZSS
N52 14.3
W106 44.3

FACF ATURU
MNM 3700
N52 08.9
W106 27.7

Saskatoon
D116.2 YXE
N52 10.9
W106 43.2

DTW SATIL
MAX 200kt
MNM 4300
N52 07.4
W106 57.9

ROVMU
N52 05.5
W106 42.0

PIBNU
N52 04.0
W106 29.2

DUNEM
N52 02.0
W105 56.7

DUNEM 2

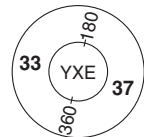
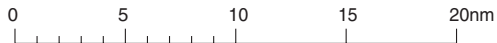
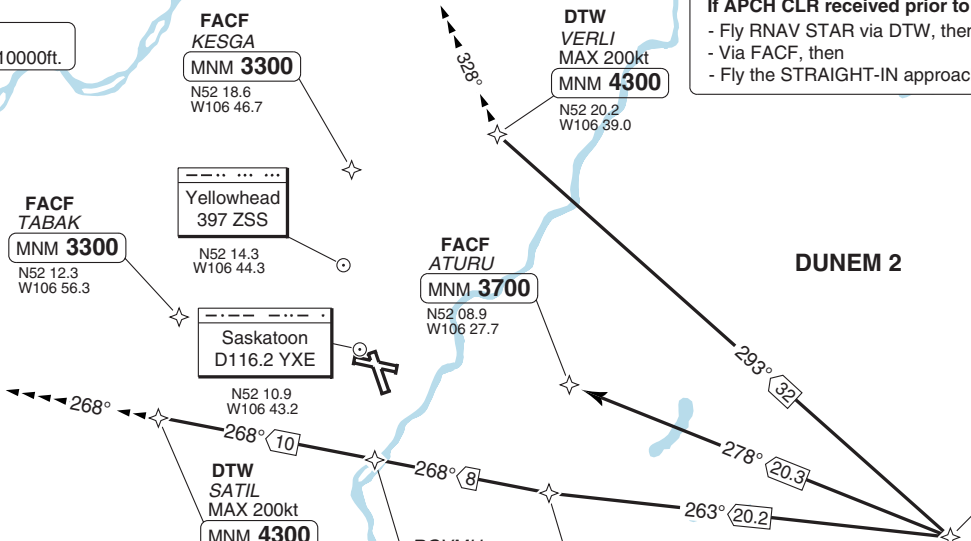
If RNAV STAR incl a DTW, following proc apply.

If APCH CLR is NOT received prior to DTW

- Fly depicted heading
- Expect radar vectors to final

If APCH CLR received prior to DTW

- Fly RNAV STAR via DTW, then
- Via FACF, then
- Fly the STRAIGHT-IN approach



STAR RNAV DUNEM 2

40 - 1 | 15 OCT 09

John G. Diefenbaker INTL SASKATOON

Canada - CYXE / YXE

THIS CHART IS A PART OF NAVIGRAPH NDAC AND IS INTENDED FOR FLIGHT SIMULATION USE ONLY.

Change: New spec.

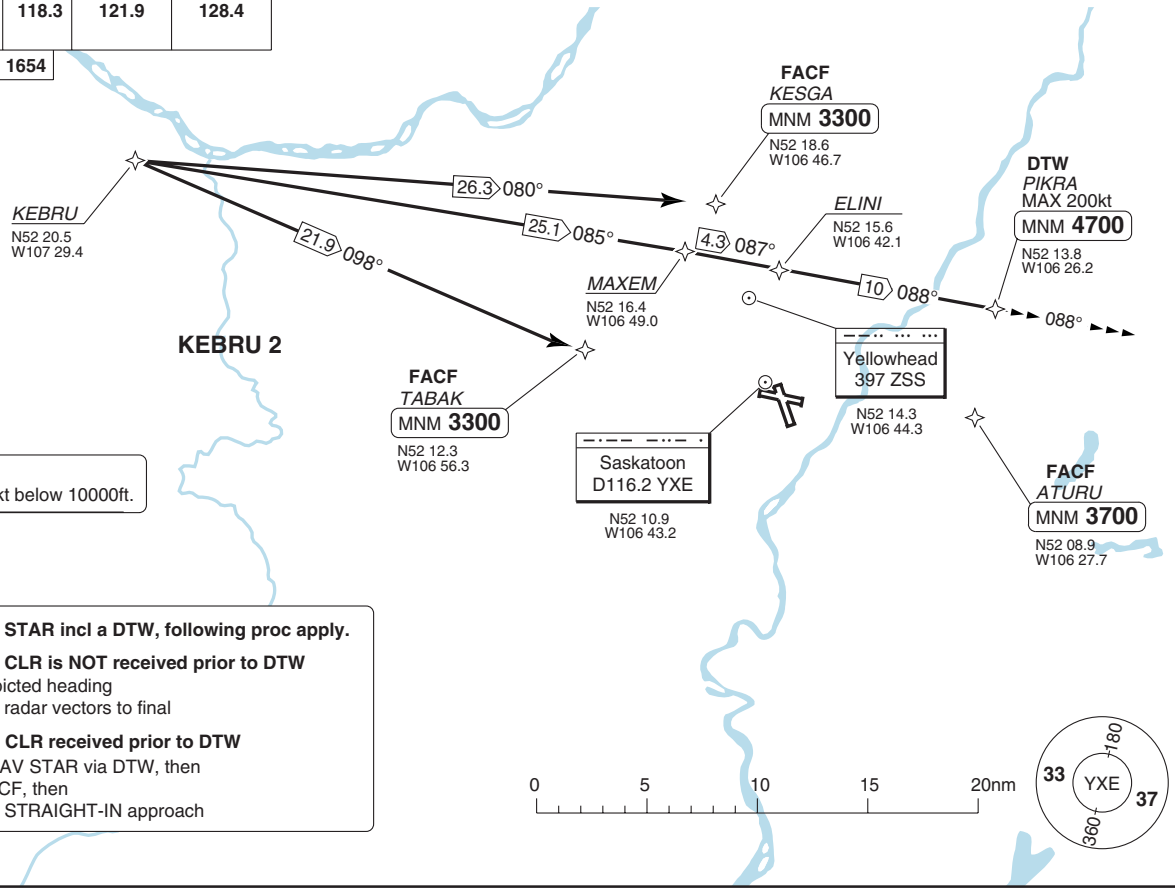
SASKATOON

John G Diefenbaker INTL

STAR RNAV KEBRU 2

Saskatoon ARR 119.9	TWR 118.3	GND (D) 121.9	ATIS (D) 128.4
-------------------------------	---------------------	-------------------------	--------------------------

TL ATC | AD Elev **1654**



© Navtech - cyxe03aaorg0

Saskatoon ARR	TWR	GND (D)	ATIS (D)
119.9	118.3	121.9	128.4

TL ATC AD Elev 1654

SPEED
MAX 250kt below 10000ft.

DTW
APDIM
MAX 200kt
MNM 4300
N52 17.0
W106 54.4

FACF
KESGA
MNM 3300
N52 18.6
W106 46.7

MAVOB 2

MAVOB
N52 05.2
W107 30.0

24.8 048°
21.9 057°

FACF
TABAK
MNM 3300
N52 12.3
W106 56.3

Saskatoon
D116.2 YXE

FACF
ATURU
MNM 3700
N52 08.9
W106 27.7

27.5 079°

EBNAG
N52 04.4
W106 45.4

DTW
PIBNU
MAX 200kt
MNM 4700
N52 04.0
W106 29.2

10 079°
088°

If RNAV STAR incl a DTW, following proc apply.

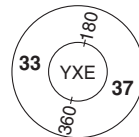
If APCH CLR is NOT received prior to DTW

- Fly depicted heading
- Expect radar vectors to final

If APCH CLR received prior to DTW

- Fly RNAV STAR via DTW, then
- Via FACF, then
- Fly the STRAIGHT-IN approach

0 5 10 15 20nm



STAR RNAV MAVOB 2

40 - 3 | 15 OCT 09

John G. Diefenbaker INTL

Canada - CYXE / YXE
SASKATOON

THIS CHART IS A PART OF NAVIGRAPH NDAC AND IS INTENDED FOR FLIGHT SIMULATION USE ONLY

Change: New spec.

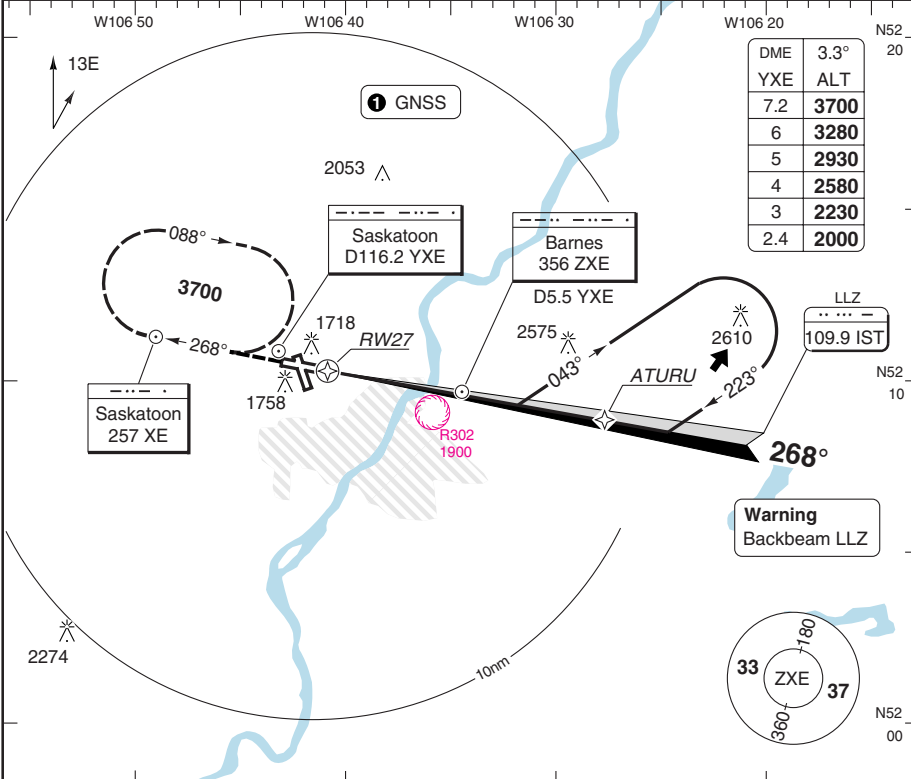
Reverse side blank

BACKBEAM LLZ OR NDB RWY 27 **1** John G Diefenbaker INTL SASKATOON

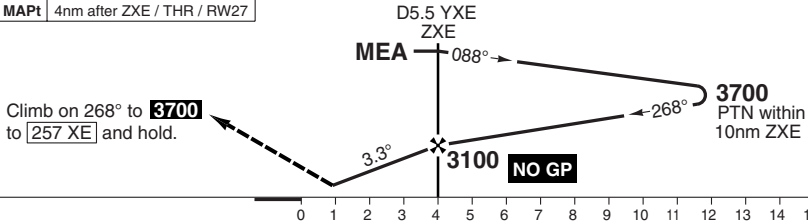
Saskatoon ARR 119.9	TWR 118.3	GND (D) 121.9	ATIS (D) 128.4
-------------------------------	---------------------	-------------------------	--------------------------

LLZ 109.9 IST	FAT 268°	TDZ Elev 1644	AD Elev 1654	TL ATC	TA 18000
----------------------	-----------------	----------------------	---------------------	--------	-----------------

DME	3.3°
YXE	ALT
7.2	3700
6	3280
5	2930
4	2580
3	2230
2.4	2000



MAPt 4nm after ZXE / THR / RW27



ACFT	Backb.LLZ	NDB	Circling
A/B	2000 (356) 1 1/4 sm	2100 (456) 1 1/2 sm	2160 (506) 1 1/2 sm
C			2260 (606) 2 sm
D			2360 (706) 2 1/4 sm

GS	100	120	140	160	LDA 2529x45 8300x150ft P 3°
ROD 3.3°	590	710	830	940	450
FAF +20s	2910	2870	2830	2790	
+40s	2710	2640	2560	2480	
+60s	2520	2400	2280	2170	
FAF-2100	1:43	1:25	1:13	1:04	IALS
FAF-2000	1:52	1:34	1:20	1:10	
FAF-MAPt	2:24	2:00	1:43	1:30	

© Navtech - cyxe02aip00

Change: New spec.

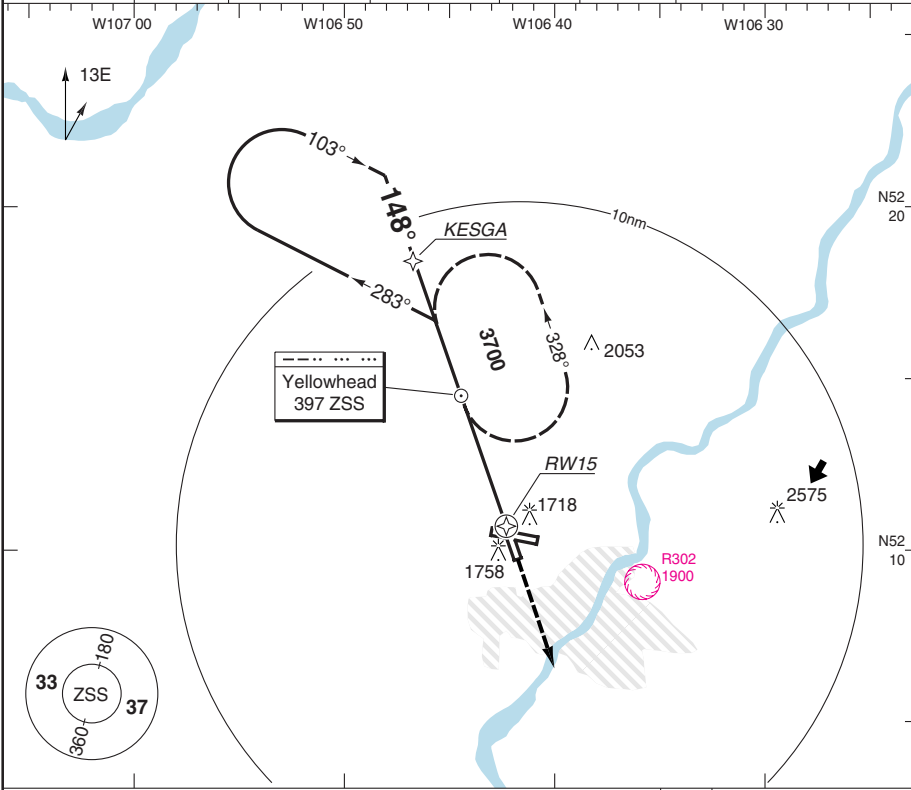
THIS CHART IS A PART OF NAVIGRAPH NDAC AND IS INTENDED FOR FLIGHT SIMULATION USE ONLY

NDB RWY 15 GNSS

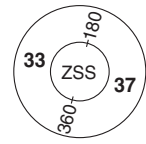
John G Diefenbaker INTL **SASKATOON**

Saskatoon ARR 119.9	TWR 118.3	GND (D) 121.9	ATIS (D) 128.4
-------------------------------	---------------------	-------------------------	--------------------------

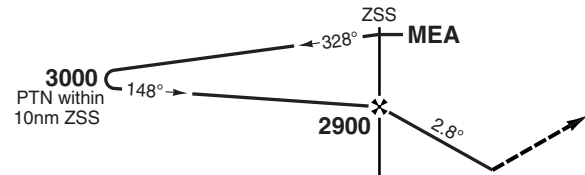
NDB 397 ZSS	FAT 148°	THR Elev 1645	AD Elev 1654	TL ATC	TA 18000
--------------------	-----------------	----------------------	---------------------	--------	-----------------



PANS OPS



MAPt 4nm after ZSS / THR / RW15



Climb on 148° to **3700**, return to **397 ZSS** and hold.

nm 16 15 14 13 12 11 10 9 8 7 6 5 4 3 2 1 0

ACFT	NDB	Circling
A/B	2000 (355) 1 1/4 sm	2160 (506) 1 1/2 sm
C		2260 (606) 2 sm
D		2360 (706) 2 1/4 sm

GS	100	120	140	160
ROD 2.8°	510	610	710	810
FAF +20s	2740	2700	2670	2640
+40s	2570	2500	2440	2370
+60s	2400	2300	2200	2100
FAF-2000	1:47	1:29	1:17	1:07
FAF-MAPt	2:24	2:00	1:43	1:30

LDA 1889x45
6200x150ft
P 3°



© Navtech - cyxe04iaip00

Change: New spec.

JAR-OPS Landing Minima (John G. Diefenbaker INTL) **SASKATOON**

Aerodrome Operating Minima is based on Transport Canada criteria and conforms to JAR OPS1 Regulations.

STRAIGHT-IN Procedure	A			B			C			D		
	DH/	HAT/	RVR	DH/	HAT/	RVR	DH/	HAT/	RVR	DH/	HAT/	RVR
	MDA	HAA	VIS	MDA	HAA	VIS	MDA	HAA	VIS	MDA	HAA	VIS
	QNH	QFE		QNH	QFE		QNH	QFE		QNH	QFE	
	ft	ft	ft/sm	ft	ft	ft/sm	ft	ft	ft/sm	ft	ft	ft/sm
09 ILS(1)	1860	200	2600	1860	200	2600	1860	200	2600	1860	200	2600
09 LLZ(2)	1980	330	5000	1980	330	5000	1980	330	5000	1980	330	5000
09 NDB(2)	2020	370	5000	2020	370	5000	2020	370	5000	2020	370	5000
15 NDB	2000	360	1¼	2000	360	1¼	2000	360	1¼	2000	360	1¼
27 LLZ BC	2000	360	1¼	2000	360	1¼	2000	360	1¼	2000	360	1¼
27 NDB	2100	460	1½	2100	460	1½	2100	460	1½	2100	460	1½
33 VOR/DME	2000	360	1¼	2000	360	1¼	2000	360	1¼	2000	360	1¼

Notes:

- (1) RVR increased to 4000ft when ALS inop.
- (2) RVR increased to 1¼ sm for Cat C,D when ALS inop.

ALTERNATE

For Aerad customers refer to Flight Information Supplement AER Section under Canada. For eRM (Electronic Route Manual) customers refer to Canada RAR (Rules and Regulations).

CIRCLING	A			B			C			D		
	MDA	HAA	RVR	MDA	HAA	RVR	MDA	HAA	RVR	MDA	HAA	RVR
	QNH	QFE	VIS	QNH	QFE	VIS	QNH	QFE	VIS	QNH	QFE	VIS
	ft	ft	ft/sm	ft	ft	ft/sm	ft	ft	ft/sm	ft	ft	ft/sm
All procs	2160	510	1½	2160	510	1½	2260	600	2	2360	700	2¼

Notes:

TAKE-OFF

All runways Vis ½sm (2600ft)

Low Vis Ops: Rwy 09/27 RVR 1200ft (¼sm).