

Airport information:

Country: Canada

City: SYDNEY

Coordinates: N 46° 09.7', W 060° 02.9'

Elevation: 203

Customs: Customs: Limited

Fuel: 100LL, Jet A1

RFF: CAT 6

hours: H24.

Runways:

Runway 01

Takeoff length: 1828, Landing length: 1828

Runway 07

Takeoff length: 2154, Landing length: 2154

Runway 19

Takeoff length: 1828, Landing length: 1828

Runway 25

Takeoff length: 2154, Landing length: 2154

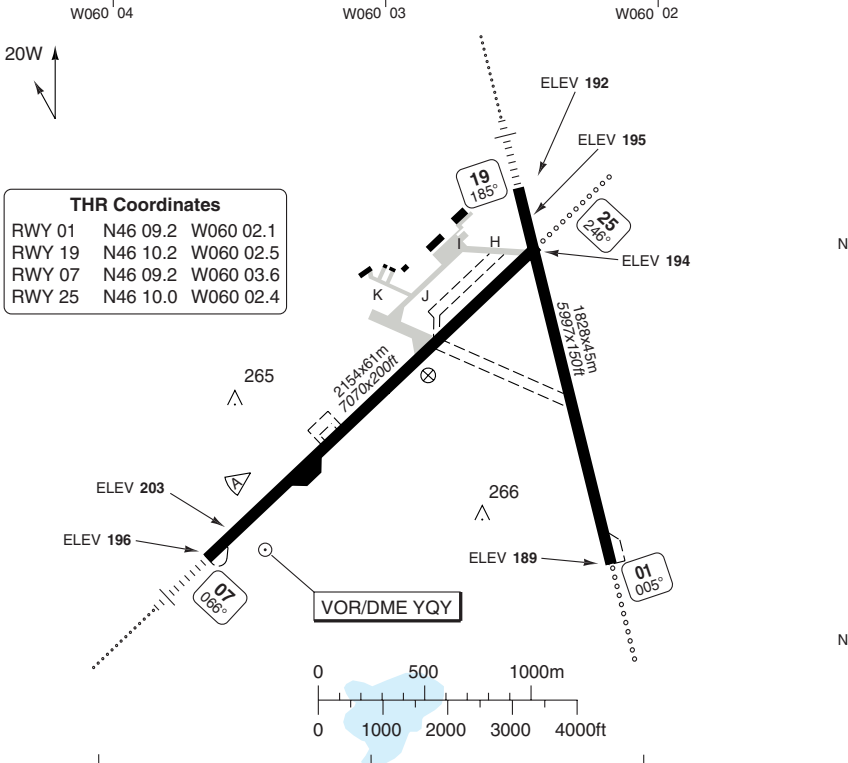
AERODROME

J.A. Douglas McCurdy **SYDNEY**

10 - 1

Charlottetown RADIO 122.0	Halifax RADIO 123.475 126.7	Moncton DEP 118.6	
-------------------------------------	---	-----------------------------	--

AD Elev 203	ARP: N46 09.7 W060 02.9	AD HR: H24	
--------------------	-------------------------	------------	--



THR Coordinates			
RWY 01	N46 09.2	W060 02.1	
RWY 19	N46 10.2	W060 02.5	
RWY 07	N46 09.2	W060 03.6	
RWY 25	N46 10.0	W060 02.4	

RWY	Slope	TORA m/ft	LDA m/ft	ALS	REDL	Additional
01	+0.1	1828 / 5997	1828 / 5997	H-L ①	H	P 3°
19	-0.1	1828 / 5997	1828 / 5997	H-I	H	-
07	0	2154 / 7070	2154 / 7070	H-I	H	-
25	0	2154 / 7070	2154 / 7070	H-L ①	H	P 3°

① 460m.
ARCAL: 123.2 Type K (RWY 01/19 7 clicks within 5 sec).
ARCAL: 122.0 Type K (RWY 07/25 7 clicks within 5 sec).

STATE TAKE OFF MINIMA

RWY	Facilities	RVR/VIS
All	REDL and/or RCL	RVO 1200ft / 1/4sm
	Standard	2600ft / 1/2sm

For take-off and alternate conditions see FIS AER section under Canada, or Canada RAR.

© Navitech - cyqy01la.org

Reverse side blank

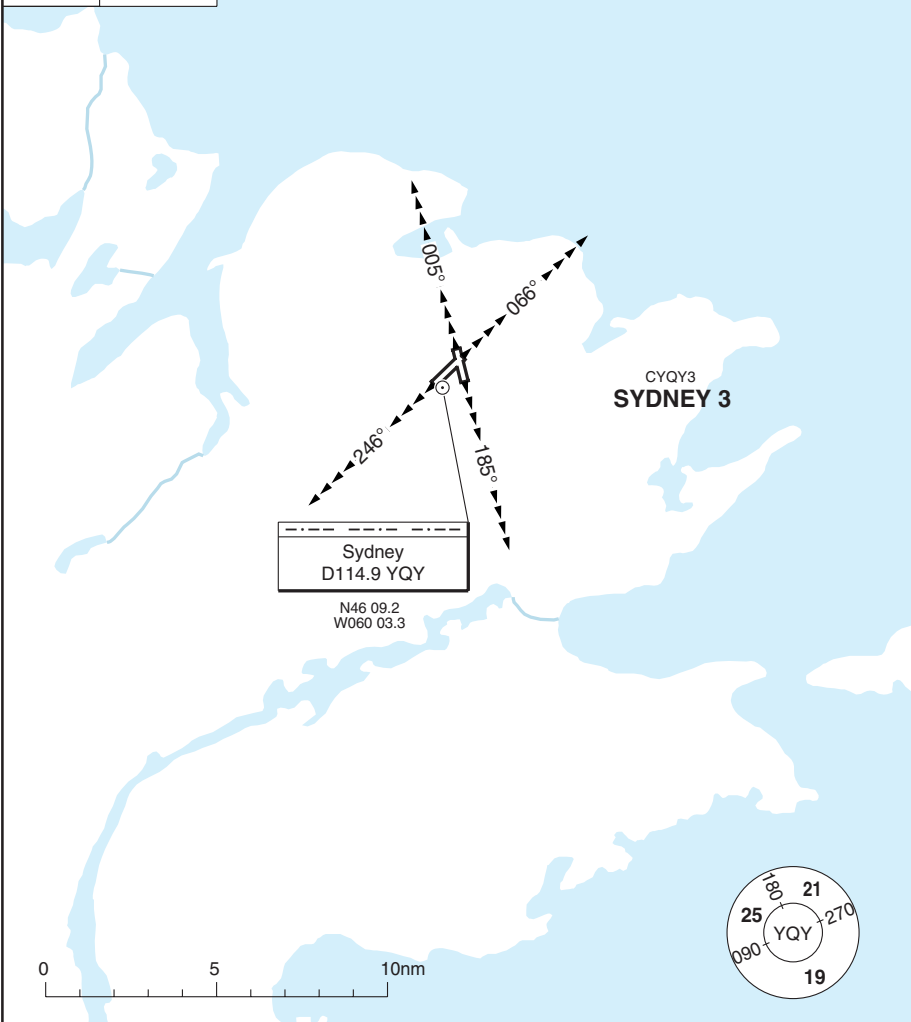
Change: Minima.

SID SYDNEY 3

J.A. Douglas McCurdy **SYDNEY**

Charlottetown RADIO 122.0	Halifax RADIO 123.475 126.7	Moncton DEP 118.6
-------------------------------------	---	-----------------------------

TA **18000** AD Elev **203**



30 - 1

© Navitech - cyqy01daorg0

SPEED: MAX 250kt or MNM safe speed if greater below 10000ft.

ALT RESTRICTION: Maintain **5000** or as assigned.

INITIAL CLIMB (All RWYs): Climb on RWY HDG for RAD vectors.

COM FAIL: On recognition of COM FAIL 10min or less after TKOF and in IFR weather conditions proceed as follows:

1. Upon reaching assigned ALT proceed directly on course.
2. Maintain last assigned ALT for 10min after TKOF, then
3. Climb to flight planned ALT.

NOTE: If COM FAIL occurs more than 10min after TKOF, comply with the appropriate procedure for COM FAIL enroute.

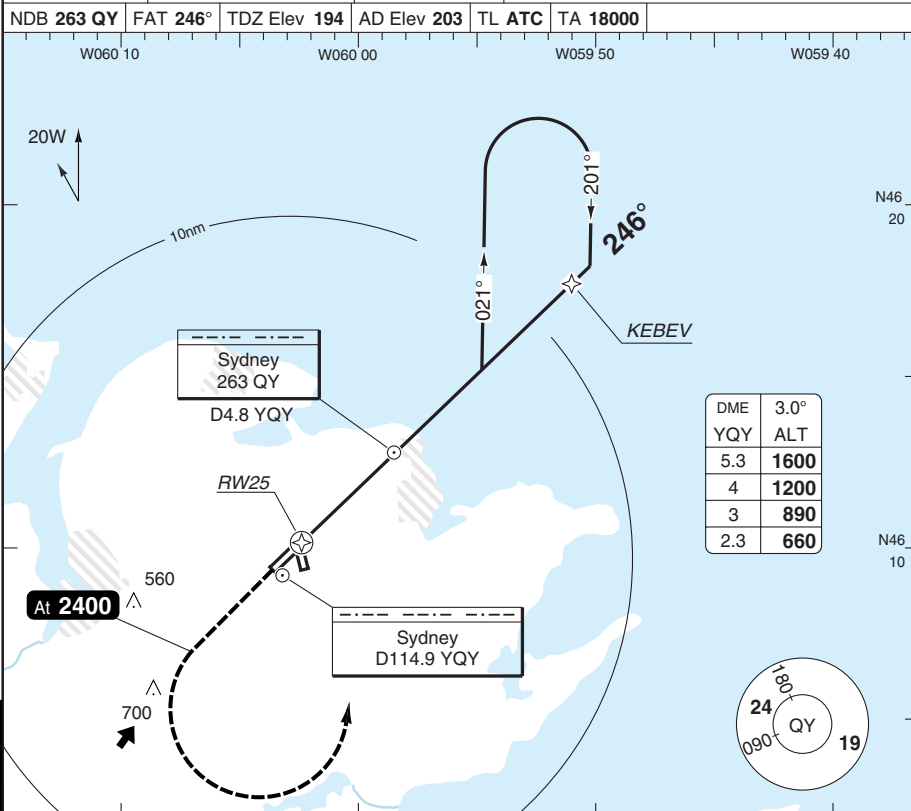
Reverse side blank

Change: Spec update.

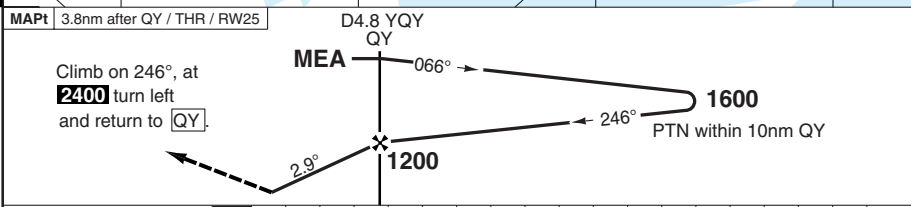
NDB (GNSS) RWY 25

J.A. Douglas McCurdy **SYDNEY**

Moncton ARR 118.6	Charlottetown RADIO 122.0	Halifax RADIO 123.475 126.7
NDB 263 QY	FAT 246°	TDZ Elev 194
AD Elev 203	TL ATC	TA 18000



50 - 2



ACFT	NDB	Circling	GS	100	120	140	160	LDA 2154x61 7070x200ft P 3°
A	660 (466) 1½sm	720 (517) 1½sm	ROD 3.0°	540	640	750	860	BALS 460
B		810 (600) 2sm	FAF +20s	1280	1250	1210	1180	
C		910 (700) 2½sm	+40s	1110	1040	960	890	
D			+60s	930	820	720	-	
			FAF- 660	1:30	1:15	1:04	0:56	
			FAF-MAPT	2:17	1:54	1:38	1:26	

Note: Time table based on passing FAF at 1460 ft

© Navtech - cyqy02aip00

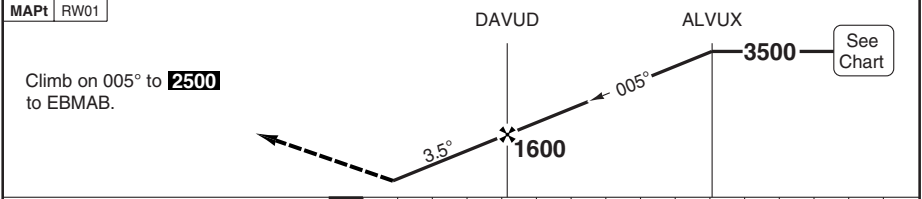
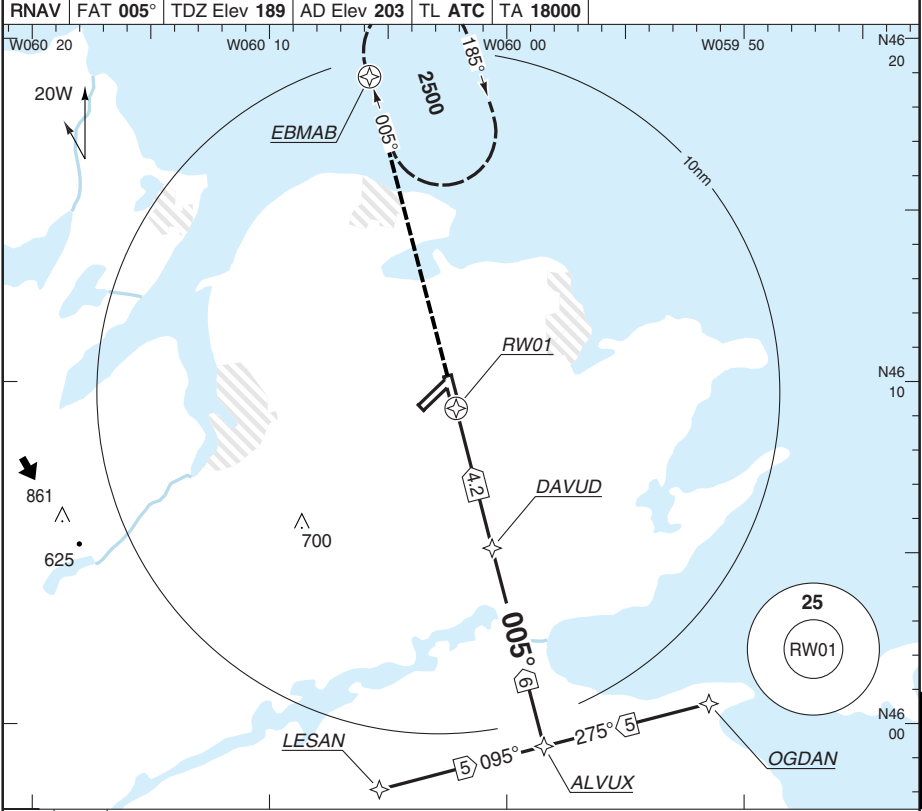
Change: Hold removed, MISAP, minima.

THIS CHART IS A PART OF NAVIGRAPH NDAC AND IS INTENDED FOR FLIGHT SIMULATION USE ONLY

RNAV (GNSS) RWY 01

J.A. Douglas McCurdy **SYDNEY**

Moncton ARR 118.6	Charlottetown RADIO 122.0	Halifax RADIO 123.475 126.7	
RNAV	FAT 005°	TDZ Elev 189	AD Elev 203
		TL ATC	TA 18000



ACFT	LNAV	Circling	THR	3.1°	LDA 1828x45		
A	560 (371) 1 1/4sm	720 (517) 1 1/2sm	01	ALT	5997x150ft		
B		810 (600) 2sm	10.1	3500	P 3°		
C		910 (700) 2 1/2sm	8	2830	BALS		
D			6	2190			
		5	1860				
		4	1540				
		3	1210				
		2	890				
GS	100	120	140	160	1.0	560	460
ROD 3.1°	550	650	760	870			

Change: Minima.

© Navitech - cyqy03aip00

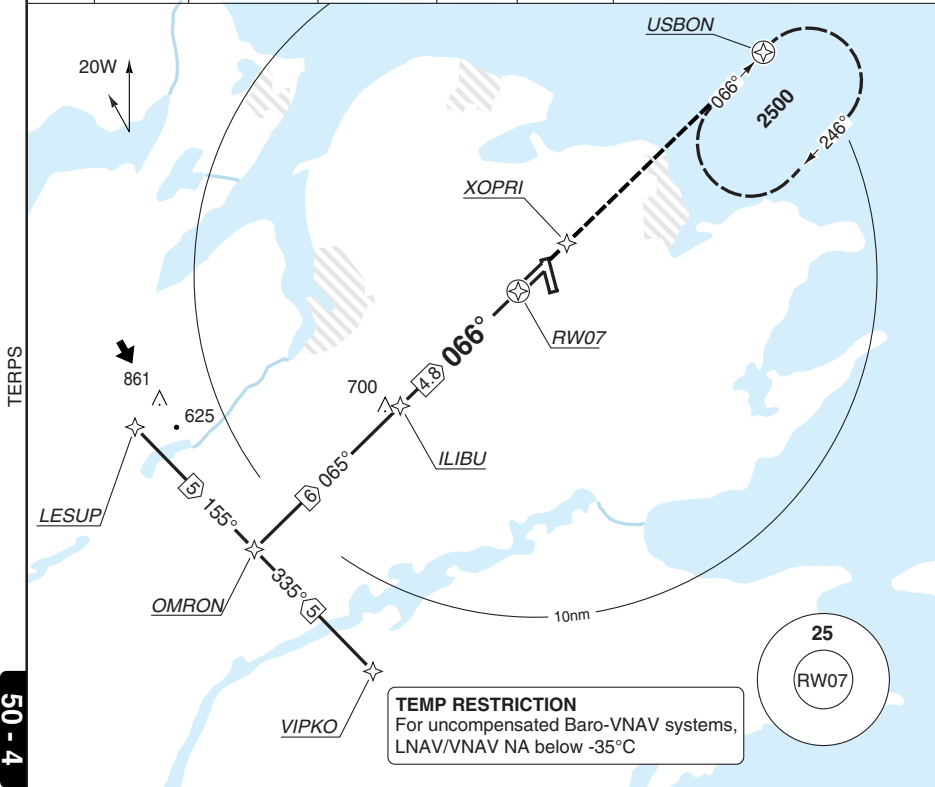
50 - 3

RNAV (GNSS) RWY 07

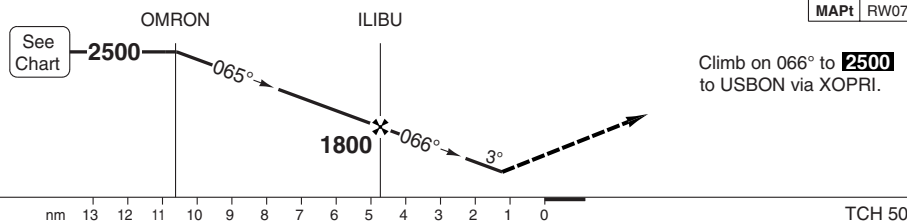
J.A. Douglas McCurdy **SYDNEY**

Moncton ARR 118.6	Charlottetown RADIO 122.0	Halifax RADIO 123.475 126.7	
-----------------------------	-------------------------------------	---	--

RNAV	FAT 066°	TDZ Elev 203	AD Elev 203	TL ATC	TA 18000
------	-----------------	---------------------	--------------------	--------	-----------------



50 - 4



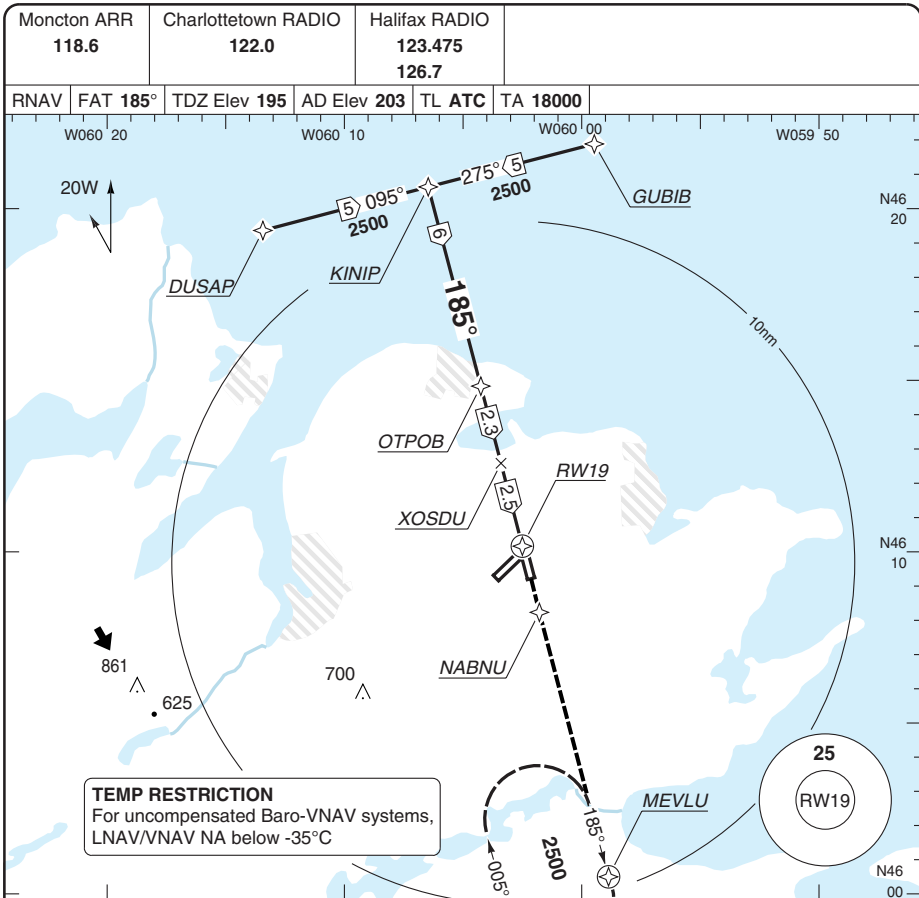
ACFT	LNAV/VNAV	LNAV	Circling	THR	3.0° ALT	LDA 2154x61 7070x200ft	
A			720 (517) 1½sm	07	2500		
B	600 (397) 1sm	660 (457) 1sm	810 (600) 2sm	6	2190		
C			910 (700) 2½sm	5	1870		
D				4	1550		
				3	1220		
				2	900		
				1.3	660		
GS	100	120	140	160			
ROD 3.0°	540	650	760	860			

© Navtech - cyqy04iaip00

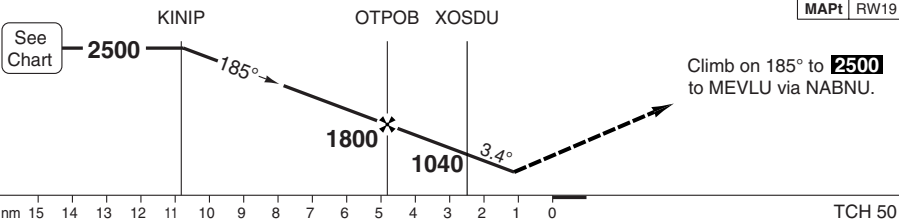
Change: Minima.

RNAV (GNSS) RWY 19

J.A. Douglas McCurdy **SYDNEY**



50 - 5



ACFT	LNAV/VNAV	LNAV	Circling
A			720 (517) 1½sm
B	620 (425) 1sm	560 (365) 1sm	810 (600) 2sm
C			910 (700) 2½sm
D			

GS	100	120	140	160
ROD 3.1°	550	650	760	870

THR	3.1° ALT	LDA 1828x45 5997x150ft
19		
7	2500	
6	2190	
5	1870	
4	1540	
3	1220	
2	900	
1.0	560	

FALS

© Navtech - cyqv05iaip00

Change: Minima.

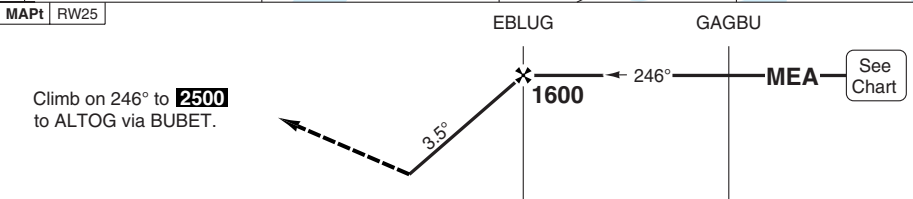
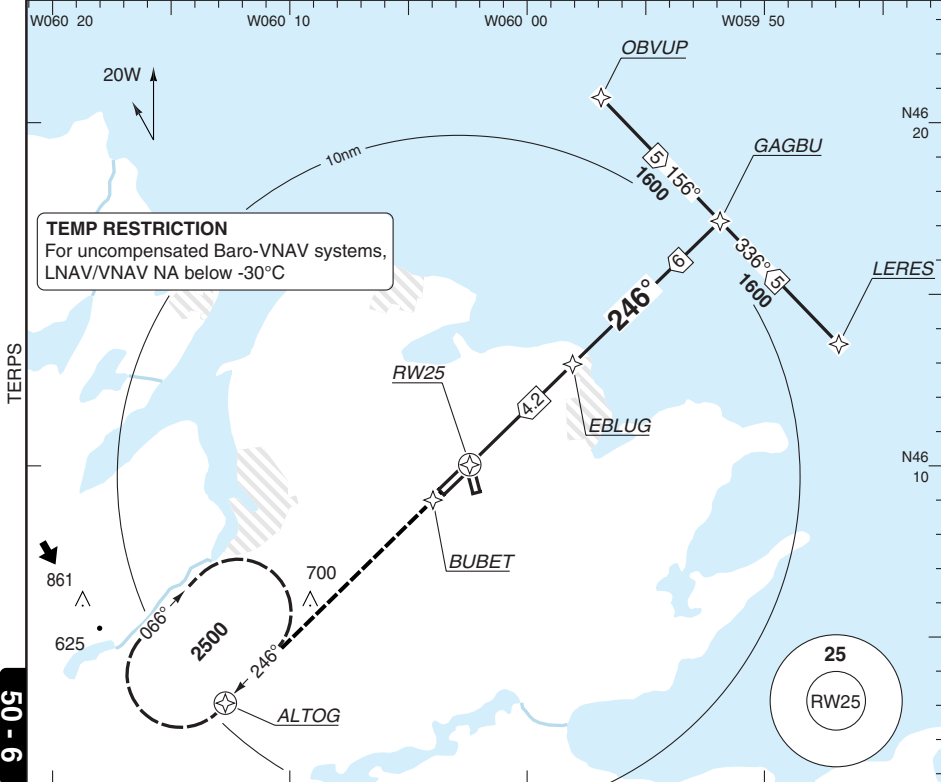
THIS CHART IS A PART OF NAVIGRAPH NDAC AND IS INTENDED FOR FLIGHT SIMULATION USE ONLY

RNAV (GNSS) RWY 25

J.A. Douglas McCurdy SYDNEY

Moncton ARR 118.6	Charlottetown RADIO 122.0	Halifax RADIO 123.475 126.7
-----------------------------	-------------------------------------	---

RNAV	FAT 246°	TDZ Elev 194	AD Elev 203	TL ATC	TA 18000
------	-----------------	---------------------	--------------------	--------	-----------------



TCH 50

0 1 2 3 4 5 6 7 8 9 10 11 12 13 14 nm

ACFT	LNAV/VNAV	LNAV	Circling	THR	3.0° ALT	LDA 2154X61 7070x200ft P 3°
A			720 (517) 1½sm	25	1600	
B	620 (426) 1¼sm	600 (406) 1¼sm	810 (600) 2sm	4.2	1220	
C			910 (700) 2½sm	3	890	
D				2	600	

GS	100	120	140	160
ROD 3.0°	540	650	760	870

460

BALS

© Navtech - cyqv08aip00

Change: Minima.

JAR-OPS Landing Minima

J.A. Douglas McCurdy NS **SYDNEY**

Aerodrome Operating Minima is based on Transport Canada criteria and conforms to JAR OPS1 Regulations.

STRAIGHT-IN Procedure	A			B			C			D		
	DH/	HAT/	RVR	DH/	HAT/	RVR	DH/	HAT/	RVR	DH/	HAT/	RVR
	MDA	HAA	VIS	MDA	HAA	VIS	MDA	HAA	VIS	MDA	HAA	VIS
	QNH	QFE		QNH	QFE		QNH	QFE		QNH	QFE	
	ft	ft	ft/sm	ft	ft	ft/sm	ft	ft	ft/sm	ft	ft	ft/sm
01 RNAV (LNAV)	560	380	1¼	560	380	1¼	560	380	1¼	560	380	1¼
07 ILS/DME(1)	410	200	2600	410	200	2600	410	200	2600	410	200	2600
07 LLZ/DME(2)	640	440	5000	640	440	5000	640	440	5000	640	440	5000
07 RNAV (LNAV/VNAV)	600	400	1	600	400	1	600	400	1	600	400	1
07 RNAV (LNAV)(2)	660	460	1	660	460	1	660	460	1	660	460	1
19 RNAV (LNAV/VNAV)	620	430	1	620	430	1	620	430	1	620	430	1
19 RNAV (LNAV)(2)	560	370	1	560	370	1	560	370	1	560	370	1
25 NDB (GNSS)	660	470	1½	660	470	1½	660	470	1½	660	470	1½
25 RNAV (LNAV/VNAV)	620	430	1¼	620	430	1¼	620	430	1¼	620	430	1¼
25 RNAV (LNAV)	600	410	1¼	600	410	1¼	600	410	1¼	600	410	1¼

Notes:

- (1) RVR increased to 4000ft when ALS inop.
- (2) RVR increased for Cat C, D to 1¼sm when ALS inop.

ALTERNATE

For Aerad customers refer to Flight Information Supplement AER Section under Canada. For eRM (Electronic Route Manual) customers refer to Canada RAR (Rules and Regulations).

CIRCLING	A			B			C			D		
	MDA	HAA	RVR	MDA	HAA	RVR	MDA	HAA	RVR	MDA	HAA	RVR
	QNH	QFE	VIS	QNH	QFE	VIS	QNH	QFE	VIS	QNH	QFE	VIS
		ft	ft	ft/sm	ft	ft	ft/sm	ft	ft	ft/sm	ft	ft
All Procs	720	520	1½	720	520	1½	810	600	2	910	700	2¼

Notes:

TAKE-OFF

All Runways Vis ½sm (2600ft)
Trees to 279ft ASL approx. 0.3nm past DER.

Low Vis Ops: Rwy 01, 07, 19, 25 RVR 1200ft (¼sm)