

Airport information:

Country: Greenland

City: UUMMANNAQ

Coordinates: N 70° 44.1', W 052° 41.8'

Elevation: 289

Customs: Customs: By arrangement

Fuel: Jet A1

RFF: CAT 5

hours: AD: (S) Mon - Fri: 11-1830 (W) +1hr. Sat - Sun AD closed.

Runways:

Runway 16

Takeoff length: 900, Landing length: 900

Runway 34

Takeoff length: 900, Landing length: 900

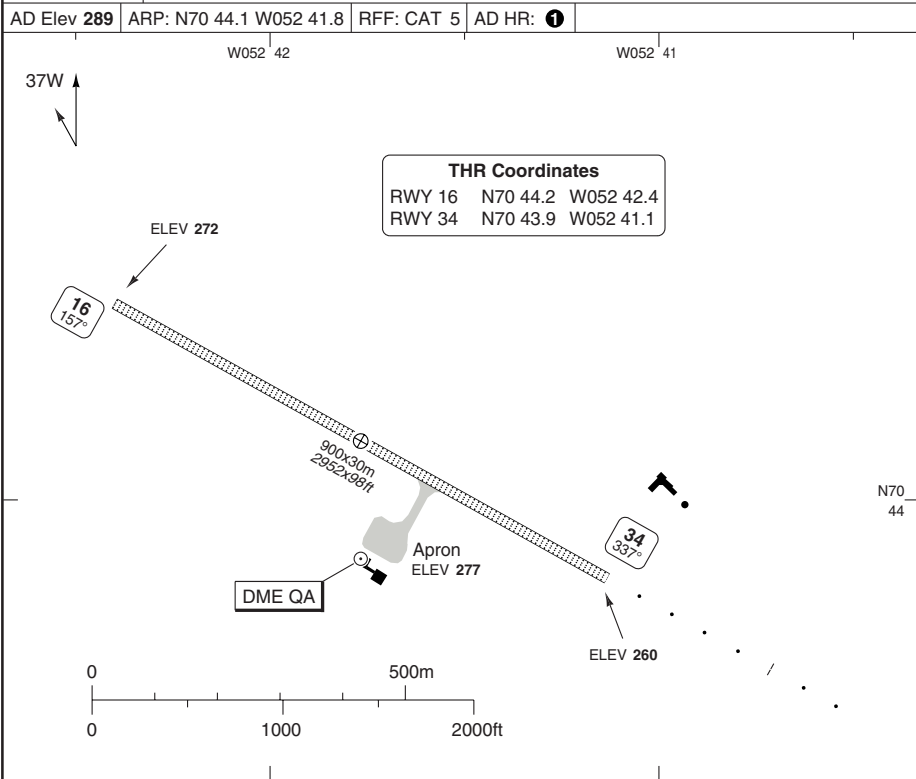
AERODROME

UUMANNAQ/QAARSUT

10 - 1

Qaarsut AFIS
119.5

AD Elev 289 | ARP: N70 44.1 W052 41.8 | RFF: CAT 5 | AD HR: ①



RWY	Slope	TORA m/ft	LDA m/ft	ALS	REDL	Additional
16	-0.4	900 / 2952	900 / 2952	-	H ③	P 7.5°L/R (32)
34	+0.4	900 / 2952	900 / 2952	H-E ②	H ③	P 7.5°L/R (32), REIL

① MON-FRI 1200-1930; SAT,SUN CLSD. PPR before end of published AD HR. ② 420m. ③ White.

EU OPS TAKE OFF MINIMA

RWY	Facilities	RVR	
		A	B
16/34	RCL (day only) or RCL + REDL NIL (day only)	400m	500m

© Navitech - bguq01aorg0

Change: New spec.

THIS CHART IS A PART OF NAVIGRAPH NDAC AND IS INTENDED FOR FLIGHT SIMULATION USE ONLY

AERODROME

UUMMANNAQ/QAARSUT

10 - 2

GENERAL INFORMATION

1. SPEED

MAX 250kt below FL100.

2. TWY RESTRICTION

TWY width 15m/49ft.
TWY/APN gravel.

3. NAV RESTRICTION

DME for use only in connection with the published procedures.

4. OMNIDIRECTIONAL DEP PROCEDURE

- MNM CLIMB GRADIENT:

RWY 16: 8.8% to 1000.

RWY 16 and 34: 5% above 1000 upto minimum sector altitude.

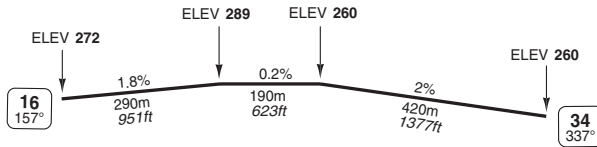
- RWY 16:

Climb on 143° to **1400**, turn left to intcp 038° from UU, climb to minimum sector altitude.

- RWY 34:

Climb VMC to **1900** in a right turn to intcp 038° from UU, climb to minimum sector altitude.

RWY SLOPE

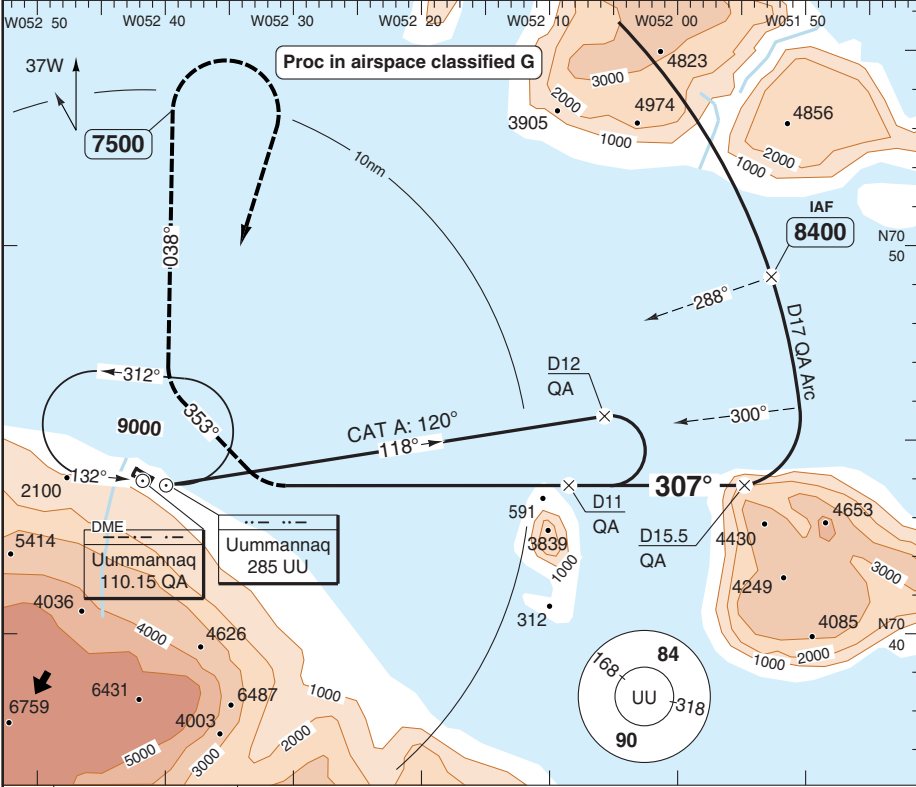


NDB 1,2 CIRCLING

UUMMANNAQ/QAARSUT

Qaarsut AFIS
119.5

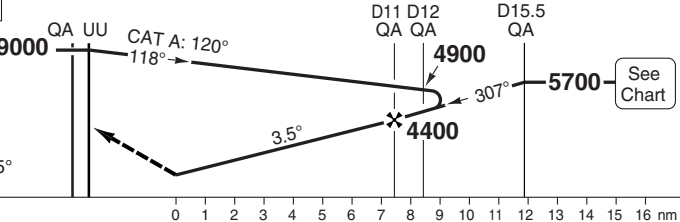
NDB 285 UU FAT 307° AD Elev 289 TL ATC TA 10000



50-1

MAPt D3.5 QA (CAT A: D3 QA)

Turn right to 353° climbing to **9000**, intop 038° from **UU**. At **7500** turn right to **UU** and hold. MAX 130kt (CAT A: 100kt) during turns. CAT A: MNM bank angle 25° during turns.



See Chart

ACFT	NDB+DME Circling
A	1150 (860) 1.5km
B	1280 (1000) 1.6km

Note: Northeast of AD only.

© Navtech - bguq01iaip00
EU OPS

Change: New spec.

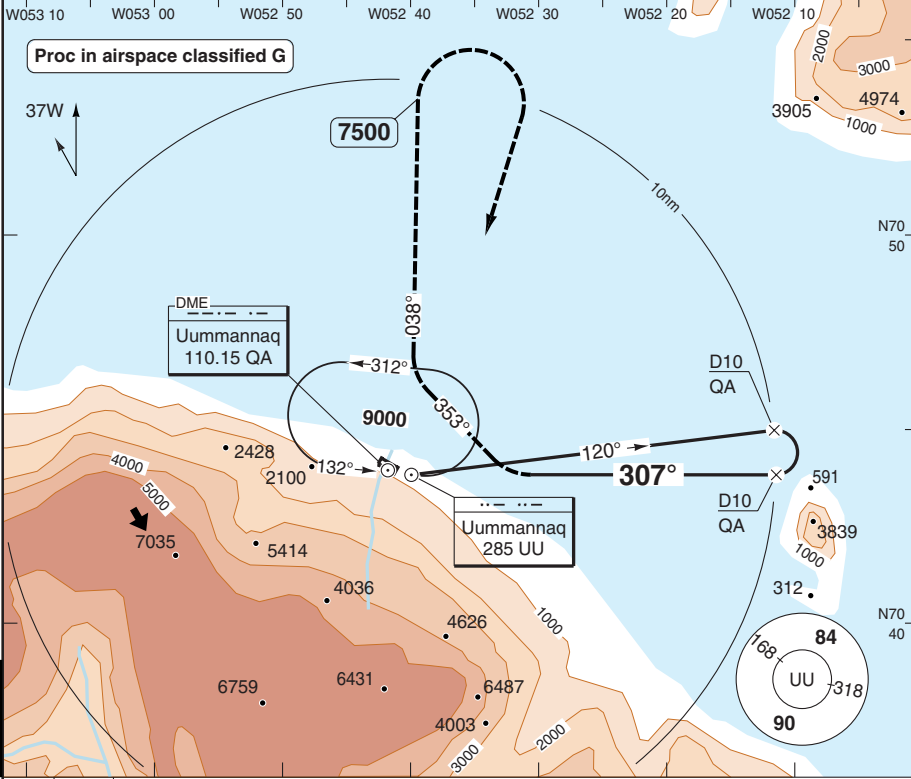
THIS CHART IS A PART OF NAVGRAPH NDAC AND IS INTENDED FOR FLIGHT SIMULATION USE ONLY

NDB 3 CIRCLING

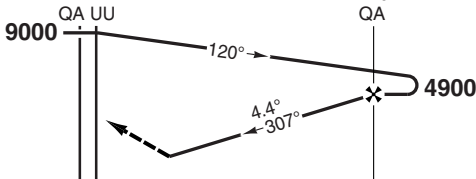
UUMANNAQ/QAARSUT

Qaarsut AFIS
119.5

NDB 285 UU FAT 307° AD Elev 289 TL ATC TA 10000



Turn right 353° climbing to **9000**, intcp 038° from **UU**. At **7500** turn right to **UU** and hold. MAX 100kt and MNM bank angle 25° during turns.



ACFT **NDB+DME Circling**

Note: Northeast of AD only.

A	1150 (860) 1.5km
---	----------------------------

50 - 2

© Navtech - bguq02aip00
EU OPS

Change: New spec.

THIS CHART IS A PART OF NAVIGRAPH NDAC AND IS INTENDED FOR FLIGHT SIMULATION USE ONLY